

IN THE CITY OF RIVERSIDE

RECORD OF SURVEY

OF LOTS 20, 21, 22, AND A PORTION OF LOT 19 OF E.N. SMITH SUBDIVISION PER MAP BOOK 5
PAGE 179, RECORDS RIVERSIDE COUNTY, CALIFORNIA, IN SECTION 13, T.2 S., R.5 W., S.B.B.&M.

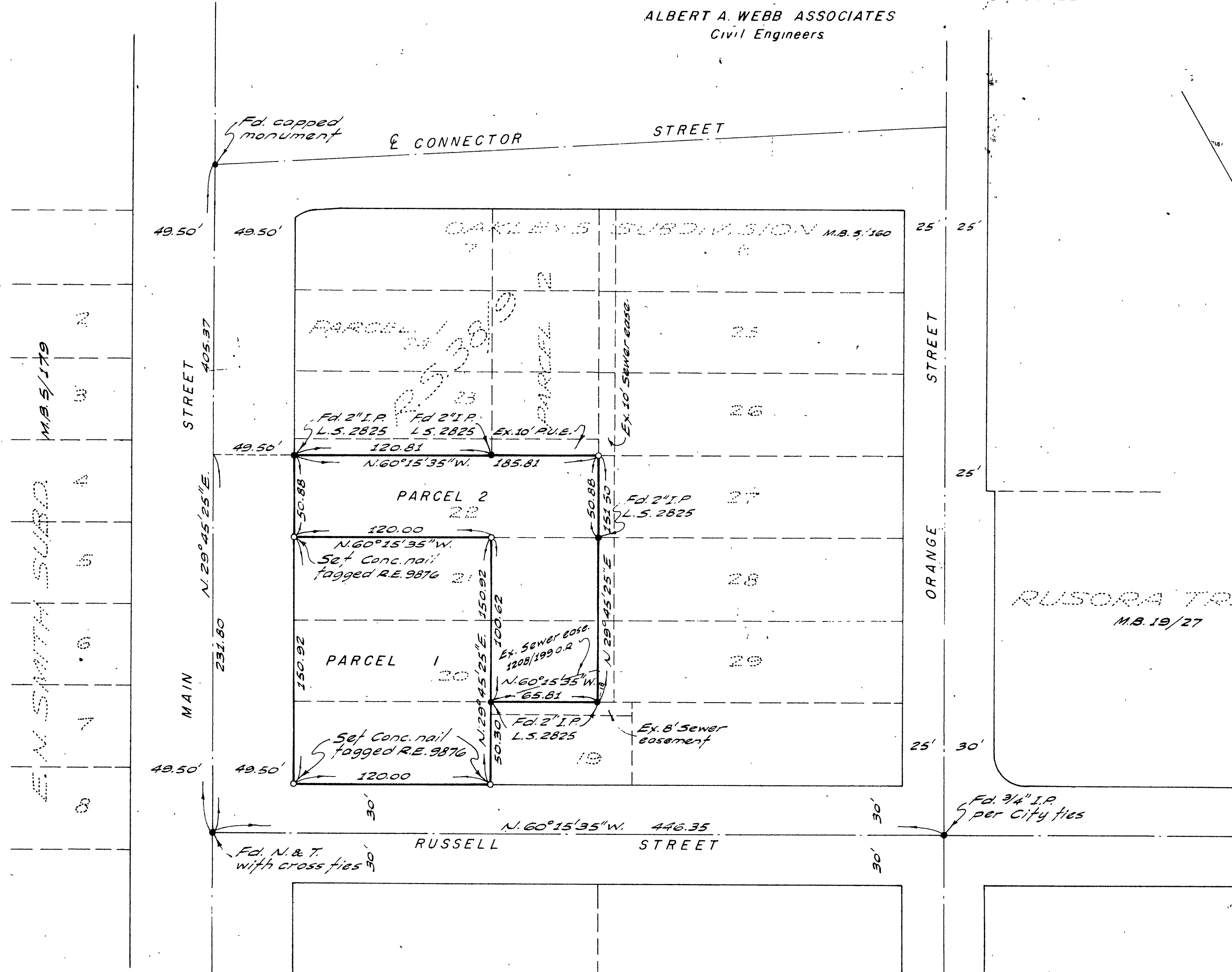
AUGUST 1964

ALBERT A. WEBB ASSOCIATES
Civil Engineers

SCALE 1" = 50'

RECORDER'S CERTIFICATE

Filed for record this 27 day of OCTOBER 1964 at 2:25 P.M.
in Book 43 of Record of Surveys at page 92 at the
request of the County Surveyor
Fee \$ 5.00 W.D. B. ALOUGH County Recorder
No. 1133 By Edward B. Arough Deputy



SURVEYOR'S CERTIFICATE

This map correctly represents a survey made by me or under my direction in conformance with the requirements of the Land Surveyors' Act at the request of THE UNION OIL COMPANY in AUGUST, 1964

Emil N. Webb

R. C. E. No. 9876

SURVEYOR'S NOTES

Basis of Bearings is the centerline of Main St. taken as N. 29° 45' 25" E. as shown by map on file in Book 38 of Records of Survey, page 9, Riverside County Records.

Found monuments as noted at all points shown thus •

Set 3/4" Iron Pipe tagged R.E. 9876 at all points shown thus o unless otherwise noted.

COUNTY SURVEYOR'S CERTIFICATE

This map has been examined for conformance with the requirements of the Land Surveyors' Act this 27 day of OCTOBER 1964

A.C. KEITH, County Surveyor

By John R. Keith Deputy