

IN THE CITY OF RIVERSIDE

# RECORD OF SURVEY

OF A PORTION OF THE WEST HALF OF THE SW 1/4 OF THE NW 1/4 OF THE SW 1/4 OF SECTION 33, T.2 S., R.5 W., S.B.B. & M.

AUGUST, 1964

SCALE: 1" = 50'

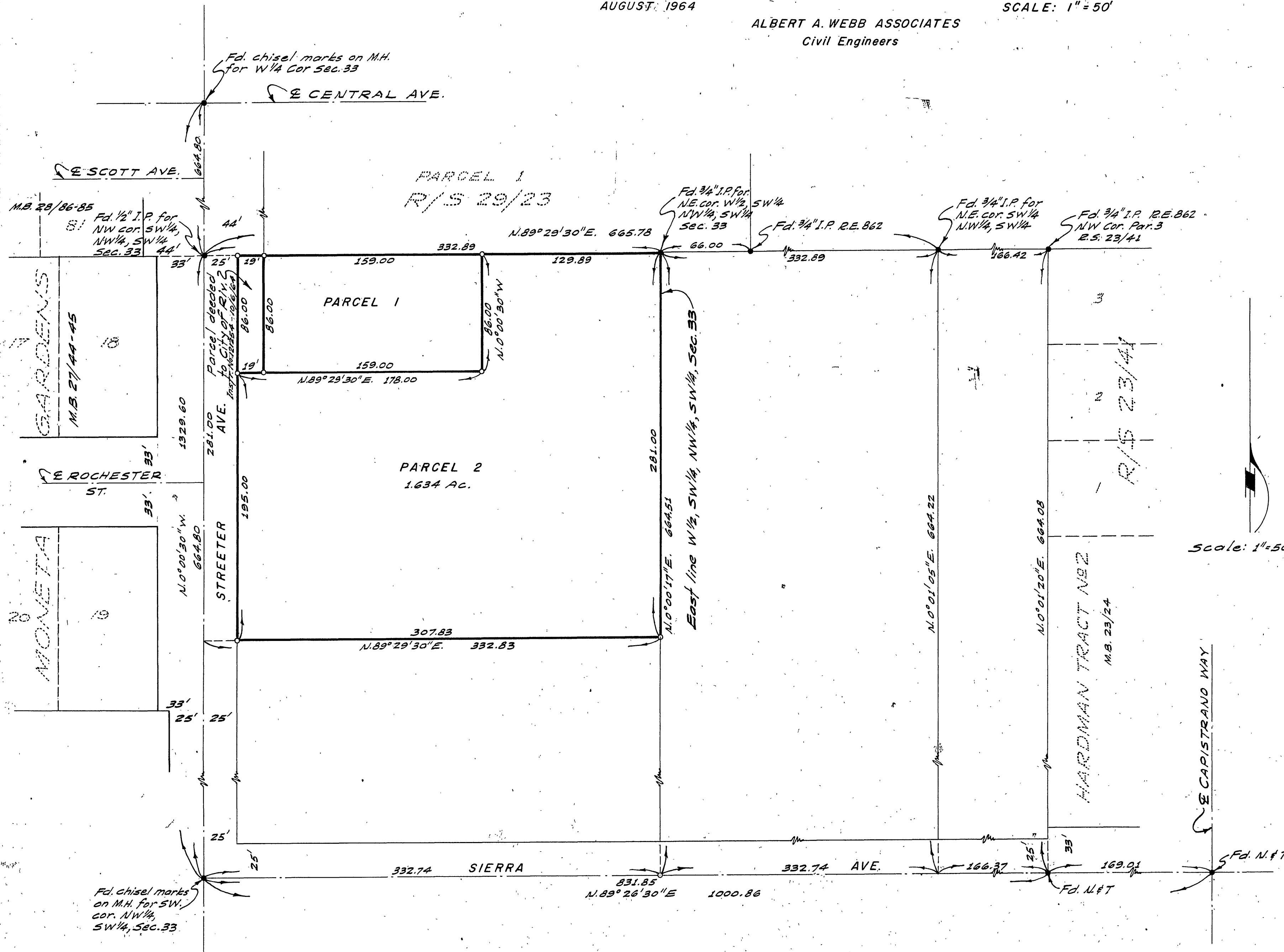
ALBERT A. WEBB ASSOCIATES  
Civil Engineers

### RECORDER'S CERTIFICATE

Filed for record this 29 day of October, 1964 at 3:50 P.M. in Book 43 of Record of Surveys at page 99 at the request of the County Surveyor.

W.D. BALOGH, County Recorder

Fee \$5.00  
No. 131104 By Alvin B. Vaughn Deputy



### SURVEYOR'S CERTIFICATE

This map correctly represents a survey made by me or under my direction in conformance with the requirements of the Land Surveyors' Act of the request of Don B. Lee in August, 1964.

Don B. Lee  
Registered Civil Engineer No 9876

### SURVEYOR'S NOTE:

Basis of Bearings is the centerline of Sierra Ave. taken as N89°26'30"E as same is shown by map of Hardman Tract No 2 on file in book 23 of Maps at pages 24 thereof, Records of Riverside County, California.

Found monuments as noted at all points shown thus: •

Set 3/4" I.P. tagged R.E. 9876 at all points shown thus: o

### COUNTY SURVEYOR'S CERTIFICATE

This map has been examined for conformance with the requirements of the Land Surveyors' Act this 28 day of October 1964.

A.C. KEITH, County Surveyor  
By J. Mills Deputy