

# RECORD OF SURVEY

IN THE COUNTY OF RIVERSIDE

## DESCRIPTION OF PROPERTY SURVEYED

BEING A PORTION OF TRACT NO. 12 MAP BOOK 10 PAGES 7 & 8 AND A PORTION OF EDGEMONT TRACT AS SHOWN IN MAP BOOK 11 PAGE 30 AND A PORTION OF EDGEMONT TRACT NO. 2 AS SHOWN IN MAP BOOK 12 PAGE 19, LOCATED IN SECTIONS 3 AND 10, T.3S., R.4 W., SAN BERNARDINO BASE AND MERIDIAN.

BY  
RIVERSIDE COUNTY FLOOD CONTROL AND WATER CONSERVATION DISTRICT  
SEPTEMBER 1964

### RECORDER'S CERTIFICATE

Filed for record this 3<sup>RD</sup> day of DECEMBER, 1964.  
at 1:30 P.M. in Book 44 of Record of Survey at pages 20-21-22-23-24  
at the request of the County Surveyor.

Fee NONE  
No 3,384.00

W. D. BALOGH  
COUNTY RECORDER

By Dean Blough  
DEPUTY

### SURVEYOR'S CERTIFICATE

This map correctly represents a survey made by me or under my direction in conformance with the requirements of the Land Surveyors Act at the request of Riverside County Flood Control & Water Conservation District in October, 1963.

John W. Bryant  
CHIEF ENGINEER R.C.E. NO. 8822

### NOTE

THE PURPOSE OF THIS MAP IS TO DELINEATE CERTAIN PARCELS OF LAND INCLUDED WITHIN THE PROPOSED RIGHT OF WAY OF A PORTION OF THE EDGEMONT CHANNEL

### SURVEYOR'S NOTE

1. BASIS OF BEARINGS for this Survey is the centerline of EDGEMONT ST. (N00°10'00"W) as shown on M.B. 21 Page 27.
2. Iron Pipe or monuments found; shown thus --- ⊙ ---
3. Nothing set; position determined by calculation unless otherwise noted; shown thus --- ○ ---
4. 4" Round concrete monuments with Brass Tag marked R.C.F.C. & W.C.D. shown thus --- ● ---

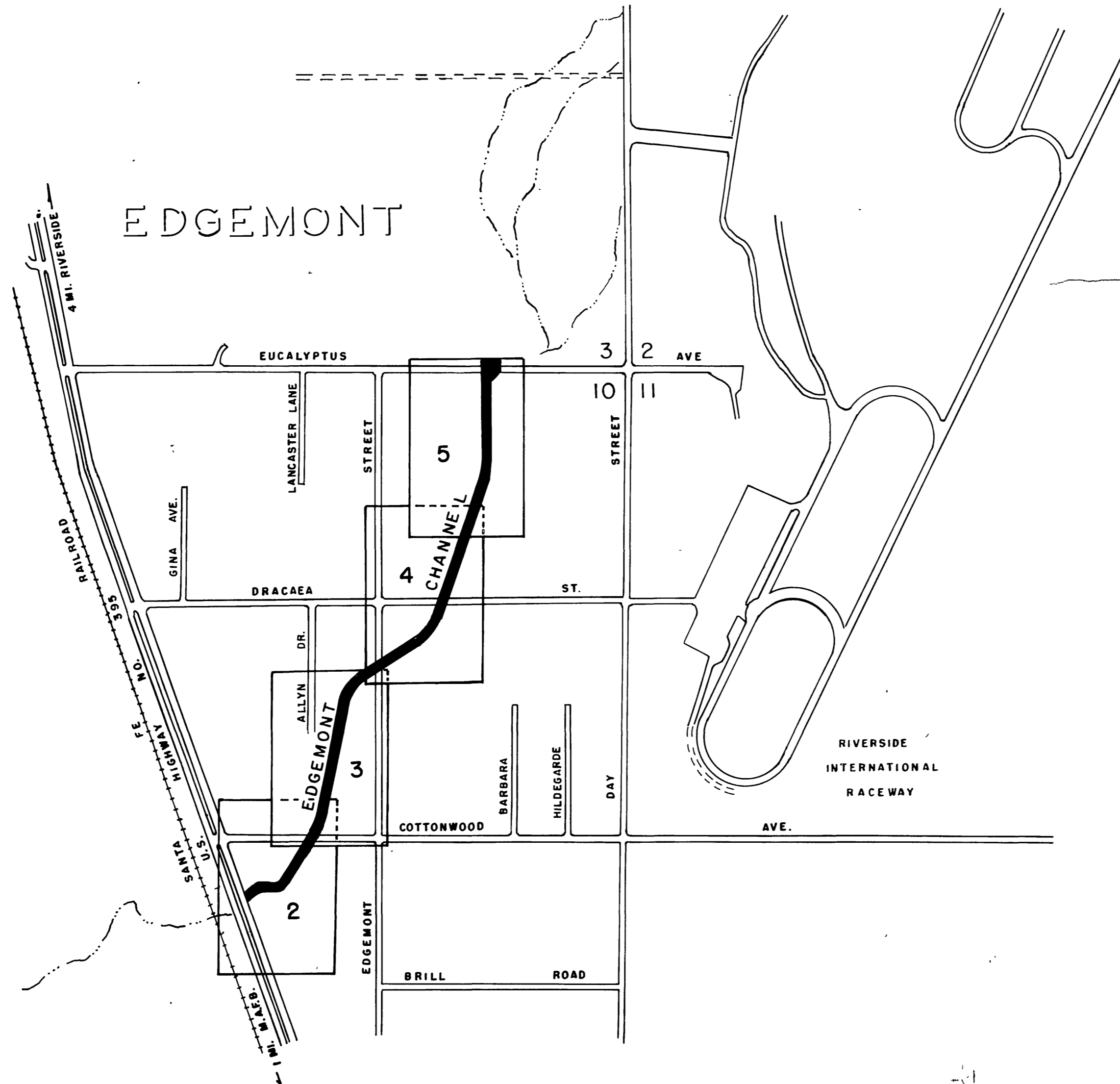
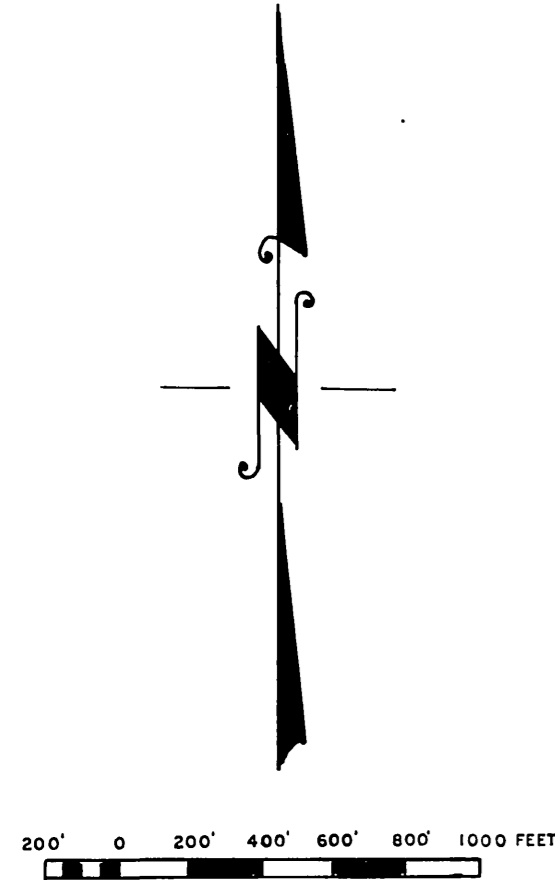
### COUNTY SURVEYOR'S CERTIFICATE

This map has been examined for conformance with the requirements of the Land Surveyor's Act.

this 2nd day of December 1964.

A. C. Keith  
COUNTY SURVEYOR

By J. W. Keith  
DEPUTY



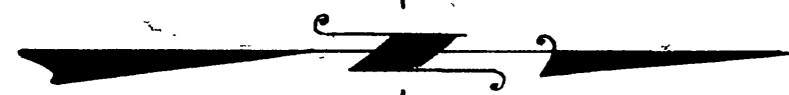
R/S 44/20

R/S 44/20

RS 44/20

# RECORD OF SURVEY

IN THE COUNTY OF RIVERSIDE



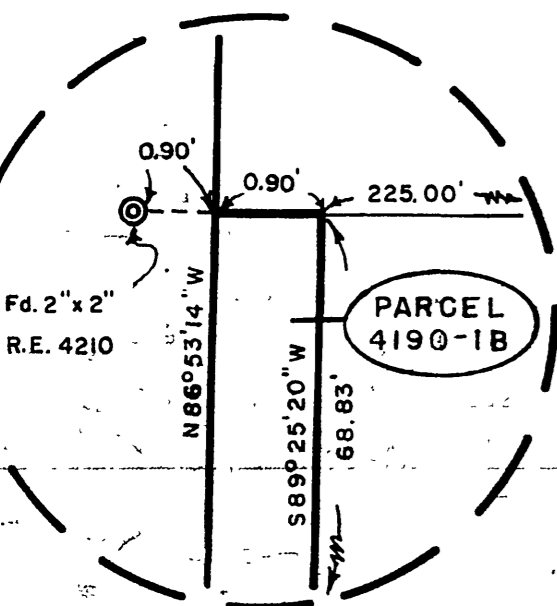
SCALE: 1" = 40'

U.S. HIGHWAY NO. 395

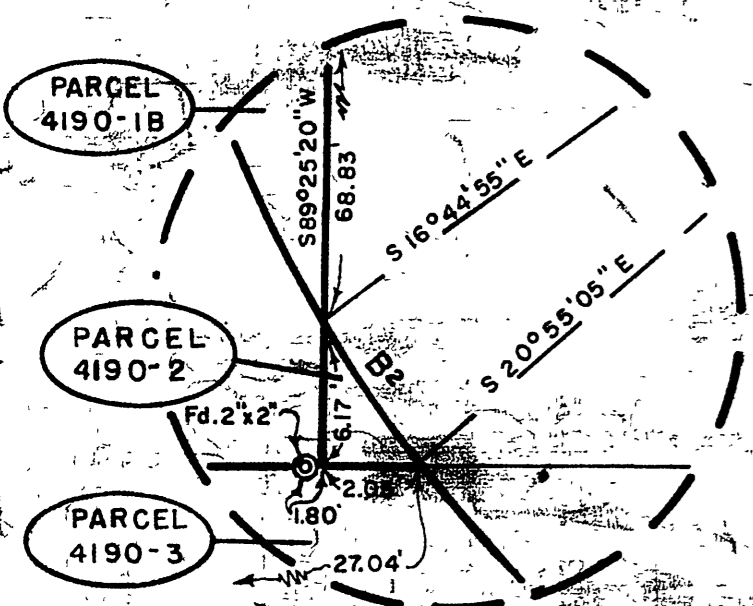
Fd. 3/4" I.P. in 4"  
Title Center of  
Section 10

Fd CP Flush  
Top Missing

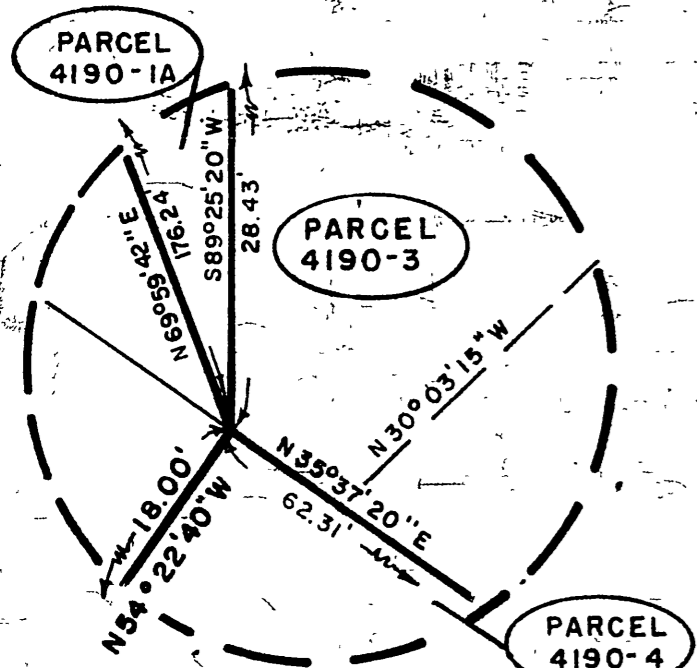
Fd 6" Square  
Conc. Mon  
Wire Ctr. Pt



DETAIL "A"  
NOT TO SCALE



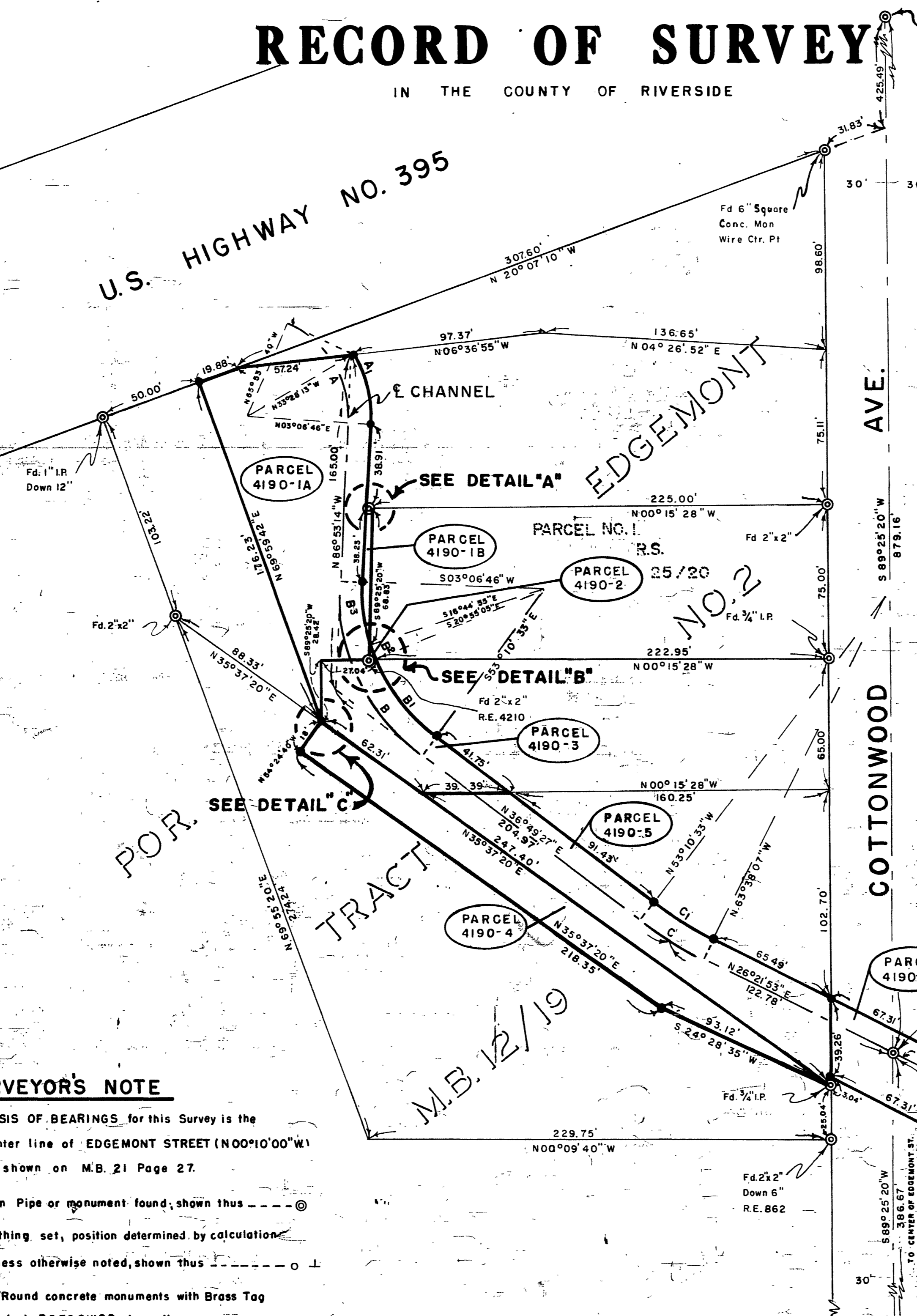
DETAIL "B"  
NOT TO SCALE



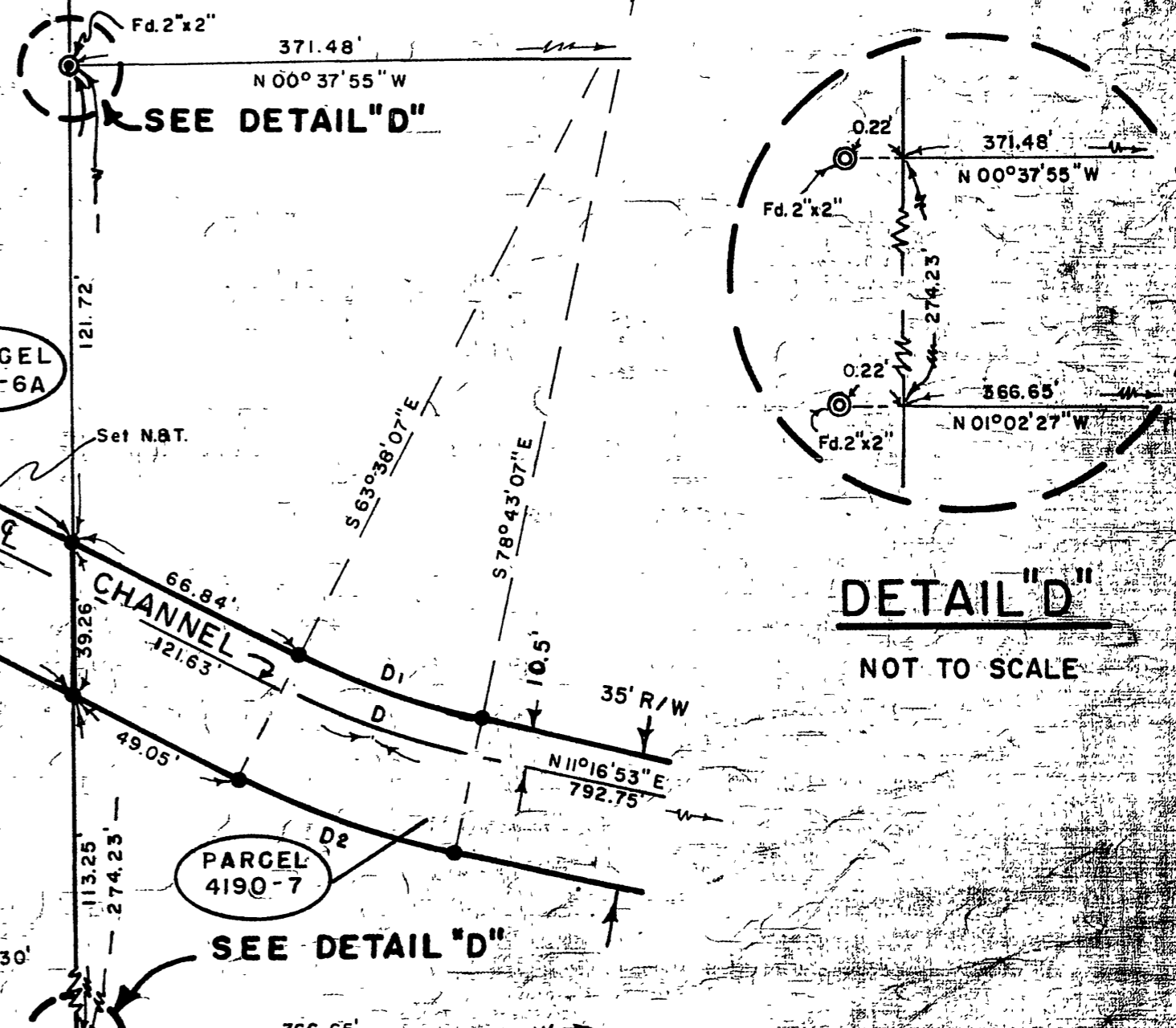
DETAIL "C"  
NOT TO SCALE

### SURVEYOR'S NOTE

1. BASIS OF BEARINGS for this Survey is the Center line of EDGEMONT STREET (N00°10'00"W) As shown on M.B. 21 Page 27.
2. Iron Pipe or monument found, shown thus  $\odot$
3. Nothing set, position determined by calculation unless otherwise noted, shown thus  $\circ$
4. 4" Round concrete monuments with Brass Tag marked R.C.F.C.&W.C.D. shown thus  $\bullet$



A	A1	B	B1	B2	B3	C	C1	D	D1	D2
<b>Δ CURVE DATA</b>	<b>Δ CURVE DATA</b>	<b>Δ CURVE DATA</b>	<b>Δ CURVE DATA</b>	<b>Δ CURVE DATA</b>	<b>Δ CURVE DATA</b>	<b>Δ CURVE DATA</b>	<b>Δ CURVE DATA</b>	<b>Δ CURVE DATA</b>	<b>Δ CURVE DATA</b>	<b>Δ CURVE DATA</b>
Δ = 69°00'26"	Δ = 36°34'59"	Δ = 56°17'19"	Δ = 32°15'28"	Δ = 04°10'10"	Δ = 19°51'41"	Δ = 10°27'34"	Δ = 10°27'34"	Δ = 15°05'00"	Δ = 15°05'00"	Δ = 15°05'00"
R = 50.00'	R = 60.50'	R = 100'	R = 89.50'	R = 89.50'	R = 89.50'	R = 20.0'	R = 189.50'	R = 20.0'	R = 189.50'	R = 224.50'
T = 34.37'	T = 20.00'	T = 53.49'	T = 25.88'	T = 3.26'	T = 15.67'	T = 18.31'	T = 17.34'	T = 26.48'	T = 25.09'	T = 29.72'
L = 60.22'	L = 39.63'	L = 98.24'	L = 50.39'	L = 6.51'	L = 31.02'	L = 36.51'	L = 34.59'	L = 52.65'	L = 49.89'	L = 59.10'



DETAIL "D"  
NOT TO SCALE

R/S 44/21

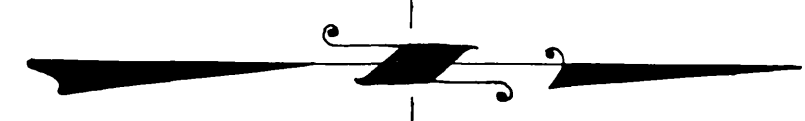
R/S 44/21

RECORD SHEET 3

# RECORD OF SURVEY

IN THE COUNTY OF RIVERSIDE

RIS 44/22



SCALE: 1" = 40'  
371.48'  
N00°37'55"W

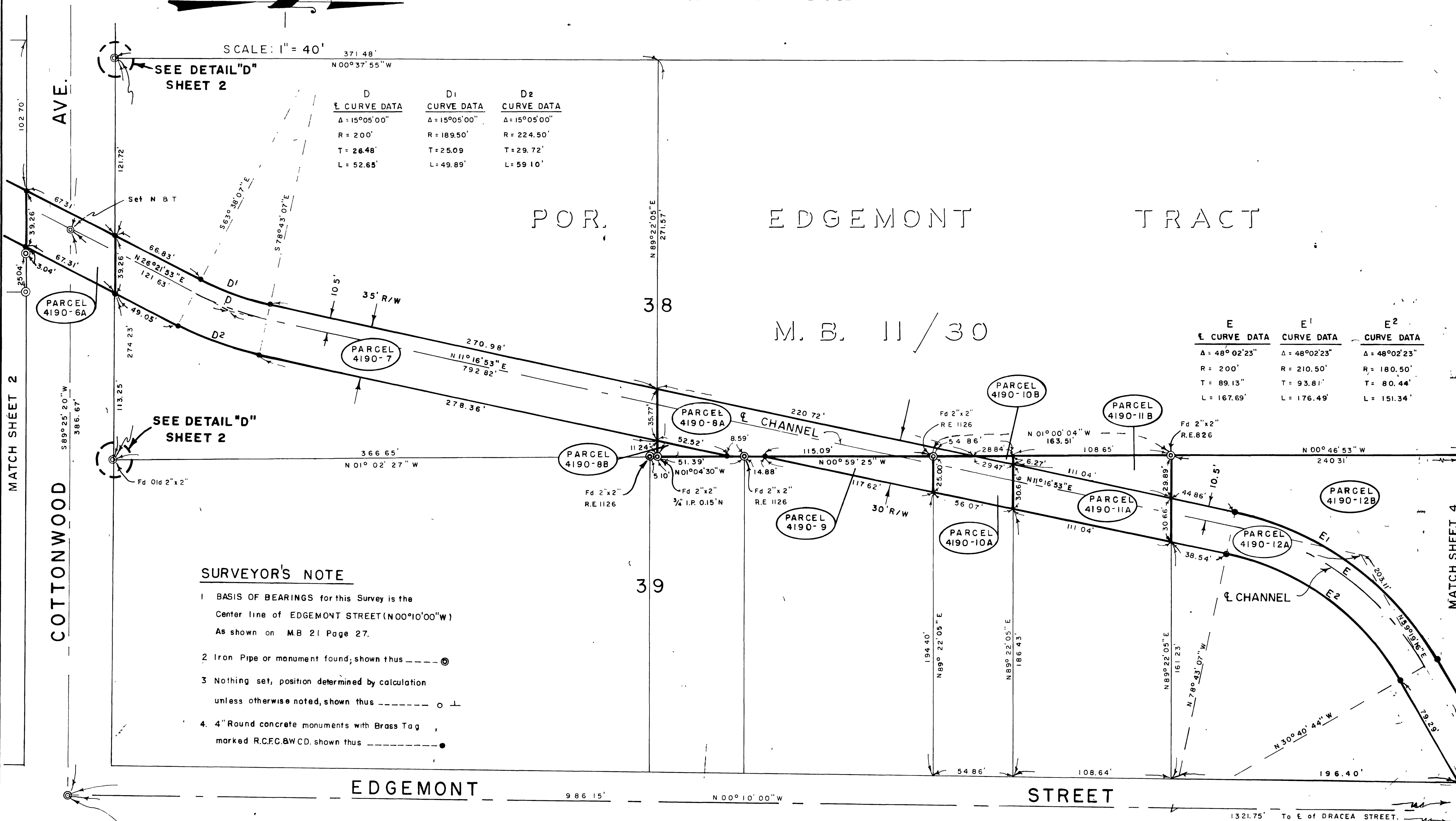
SEE DETAIL "D"  
SHEET 2

D	D1	D2
ℓ CURVE DATA	CURVE DATA	CURVE DATA
Δ = 15°05'00"	Δ = 15°05'00"	Δ = 15°05'00"
R = 200'	R = 189.50'	R = 224.50'
T = 26.48'	T = 25.09'	T = 29.72'
L = 52.65'	L = 49.89'	L = 59.10'

POR. EDGEMONT TRACT

M. B. 11 / 30

E	E1	E2
ℓ CURVE DATA	CURVE DATA	CURVE DATA
Δ = 48°02'23"	Δ = 48°02'23"	Δ = 48°02'23"
R = 200'	R = 210.50'	R = 180.50'
T = 89.13'	T = 93.81'	T = 80.44'
L = 167.69'	L = 176.49'	L = 151.34'



### SURVEYOR'S NOTE

- 1 BASIS OF BEARINGS for this Survey is the Center line of EDGEMONT STREET (N00°10'00"W) As shown on M.B. 21 Page 27.
- 2 Iron Pipe or monument found, shown thus
- 3 Nothing set, position determined by calculation unless otherwise noted, shown thus
- 4 4" Round concrete monuments with Brass Tag marked R.C.F.C. & W.C.D. shown thus

Fd. 1 1/2" I.P.  
Co Sur Tag

MATCH SHEET 2

COTTONWOOD

MATCH SHEET 4

RIS 44/22

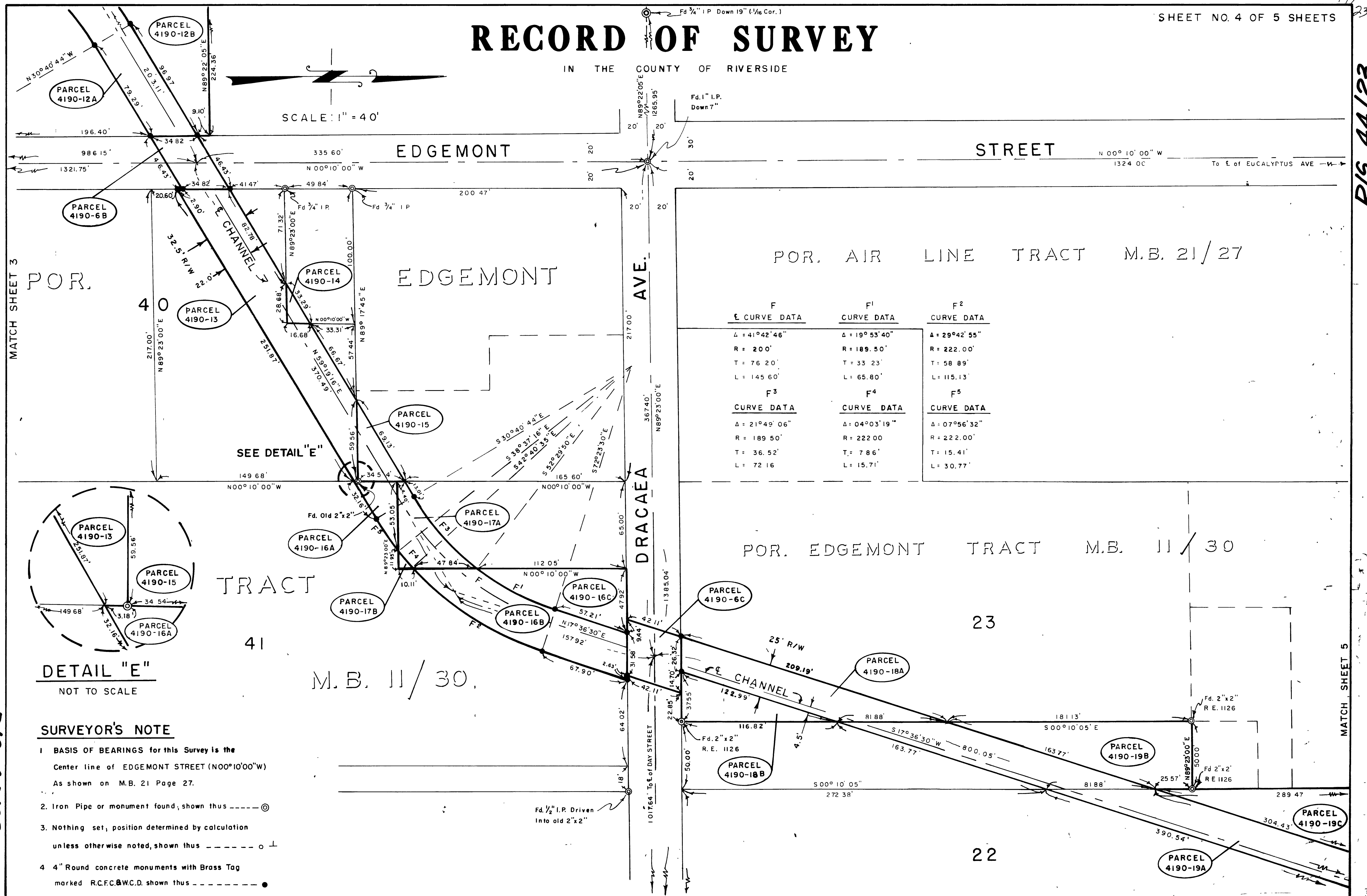
RS 44/22

441  
23  
R/S 44/23

# RECORD OF SURVEY

IN THE COUNTY OF RIVERSIDE

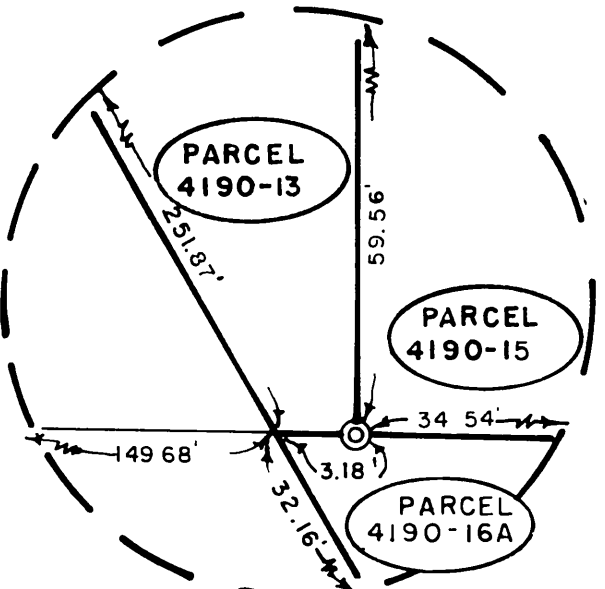
SCALE: 1" = 40'



MATCH SHEET 3

MATCH SHEET 5

F	F <sup>1</sup>	F <sup>2</sup>
<u>Δ CURVE DATA</u>	<u>Δ CURVE DATA</u>	<u>Δ CURVE DATA</u>
Δ = 41°42'46"	Δ = 19°53'40"	Δ = 29°42'55"
R = 200'	R = 189.50'	R = 222.00'
T = 76.20'	T = 33.23'	T = 58.89'
L = 145.60'	L = 65.80'	L = 115.13'
F <sup>3</sup>	F <sup>4</sup>	F <sup>5</sup>
<u>Δ CURVE DATA</u>	<u>Δ CURVE DATA</u>	<u>Δ CURVE DATA</u>
Δ = 21°49'06"	Δ = 04°03'19"	Δ = 07°56'32"
R = 189.50'	R = 222.00'	R = 222.00'
T = 36.52'	T = 7.86'	T = 15.41'
L = 72.16'	L = 15.71'	L = 30.77'



DETAIL "E"  
NOT TO SCALE

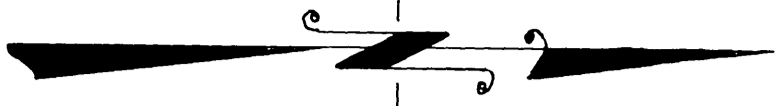
### SURVEYOR'S NOTE

- 1 BASIS OF BEARINGS for this Survey is the Center line of EDGEMONT STREET (N00°10'00"W) As shown on M.B. 21 Page 27.
- 2 Iron Pipe or monument found, shown thus  $\odot$
- 3 Nothing set, position determined by calculation unless otherwise noted, shown thus  $\circ$
- 4 4" Round concrete monuments with Brass Tag marked R.C.F.C. & W.C.D. shown thus  $\bullet$

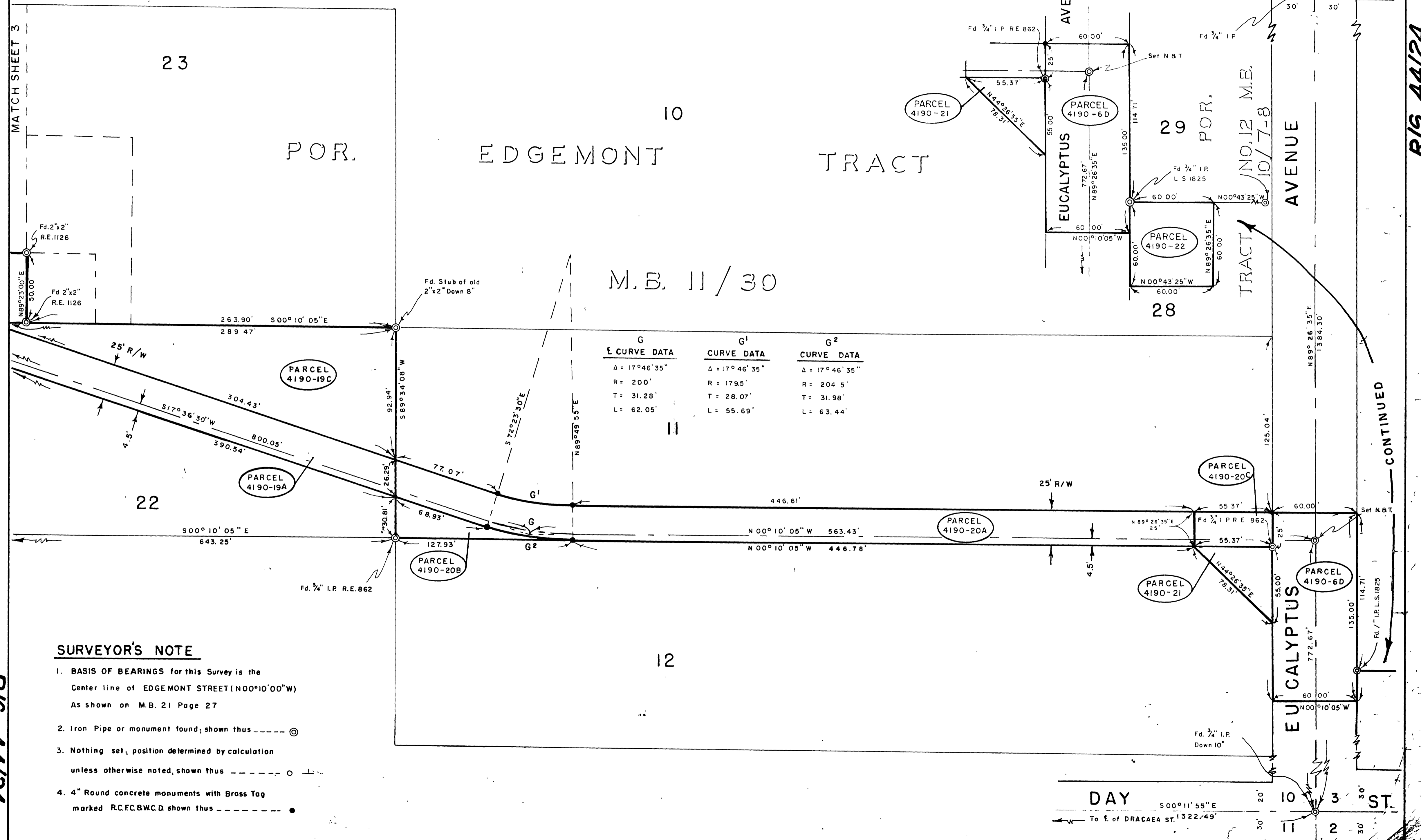
RS 44/23

# RECORD OF SURVEY

IN THE COUNTY OF RIVERSIDE



SCALE 1" = 40'



### SURVEYOR'S NOTE

1. BASIS OF BEARINGS for this Survey is the Center line of EDGEMONT STREET (N00°10'00"W) As shown on M.B. 21 Page 27
2. Iron Pipe or monument found; shown thus
3. Nothing set, position determined by calculation unless otherwise noted, shown thus
4. 4" Round concrete monuments with Brass Tag marked R.C.F.C. & W.C.D. shown thus

DAY 10 3 30 ST.

To E. of DRACAEA ST. 1322.49'

CONTINUED

RIS 44/24

RIS 44/24