

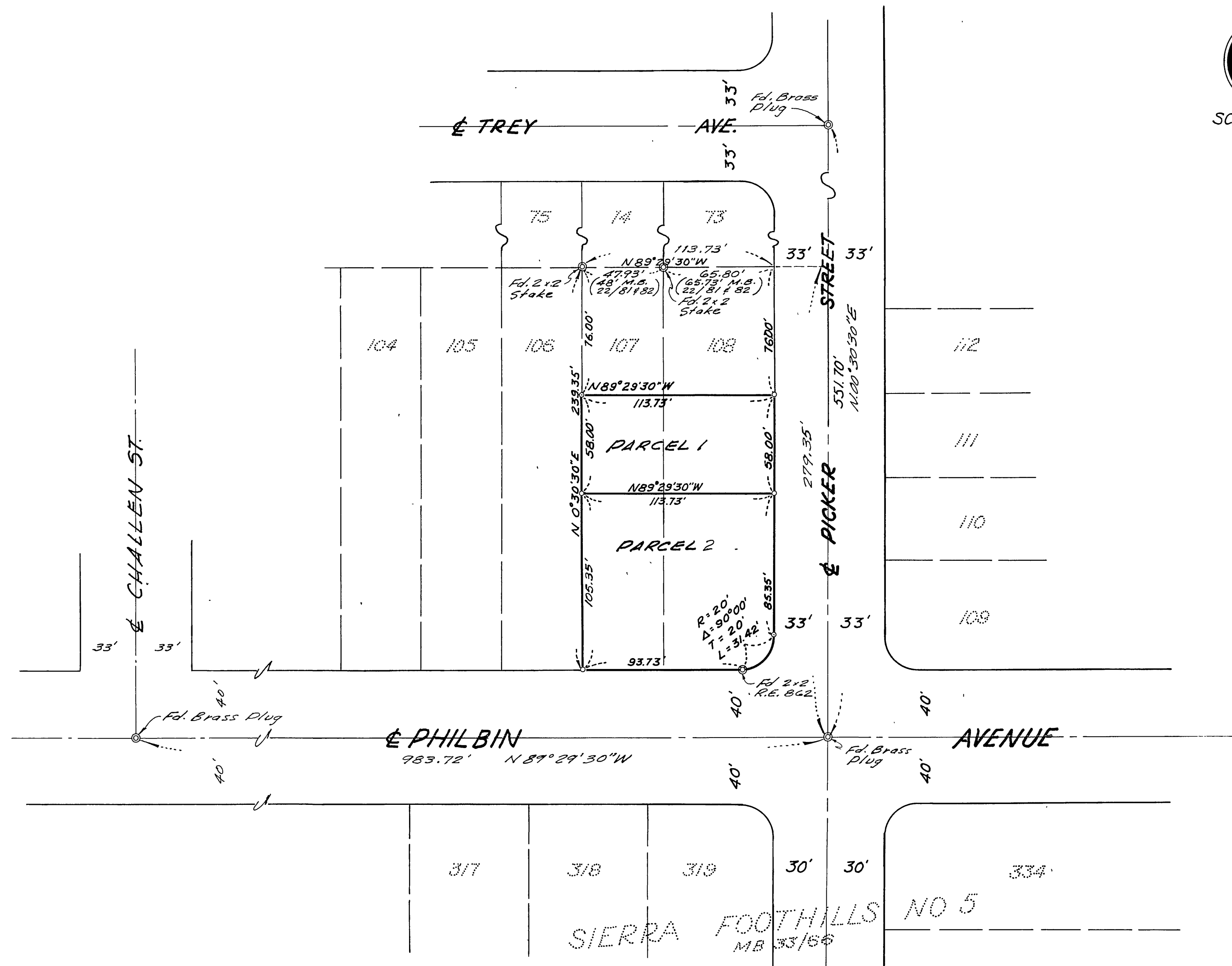
IN THE CITY OF RIVERSIDE  
**RECORD OF SURVEY**

OF A PORTION OF LOTS 107 & 108 CAMP ANZA SUBDIVISION No 1  
 AS SHOWN BY MAP RECORDED IN BOOK 22 PAGES 81 & 82  
 RECORDS OF RIVERSIDE COUNTY, CALIFORNIA. - IN RANCHO LA SIERRA SEPULVEDA  
 CRAWLEY & HAWKINS Engineers & Surveyors DECEMBER 1964

RECORDER'S CERTIFICATE

Filed for record this 18 day of DECEMBER 1964 at 11:40 AM.  
 in Book 44 of Record of Surveys at page 41 at the request  
 of the County Surveyor.

W. D. BALOGH County Recorder  
 Fee \$ 5.00  
 No. 15702 By Devin B. Vaughn DEPUTY



SURVEYOR'S CERTIFICATE

This map correctly represents a survey made by me or under my direction in conformance with the requirements of the Land Surveyors' Act at the request of HARVELL SMITH in May, 1964.

George O. Crawley  
 R.E. No 94551

SURVEYOR'S NOTE

Bearings are based on the center line of PHILBIN AVE. being N. 89° 29' 30" W. as shown on map of CAMP ANZA SUBDIVISION, M.B. 22, page 82, Records of Riverside County, California.

o indicates 3/4" Iron Pipe, tagged R.E. 9455, set.

COUNTY SURVEYOR'S CERTIFICATE

This map has been examined for conformance with the requirements of the Land Surveyors' Act this 17th day of December, 1964.

A.C. KEITH County Surveyor

By J. M. Smith DEPUTY  
 F.B. 54/56