

IN THE CITY OF RIVERSIDE  
**RECORD OF SURVEY**

OF A PORTION OF THE SOUTH 1/2 OF SECTION 36, T.2S., R.5W.,  
 S.B.B. and M.

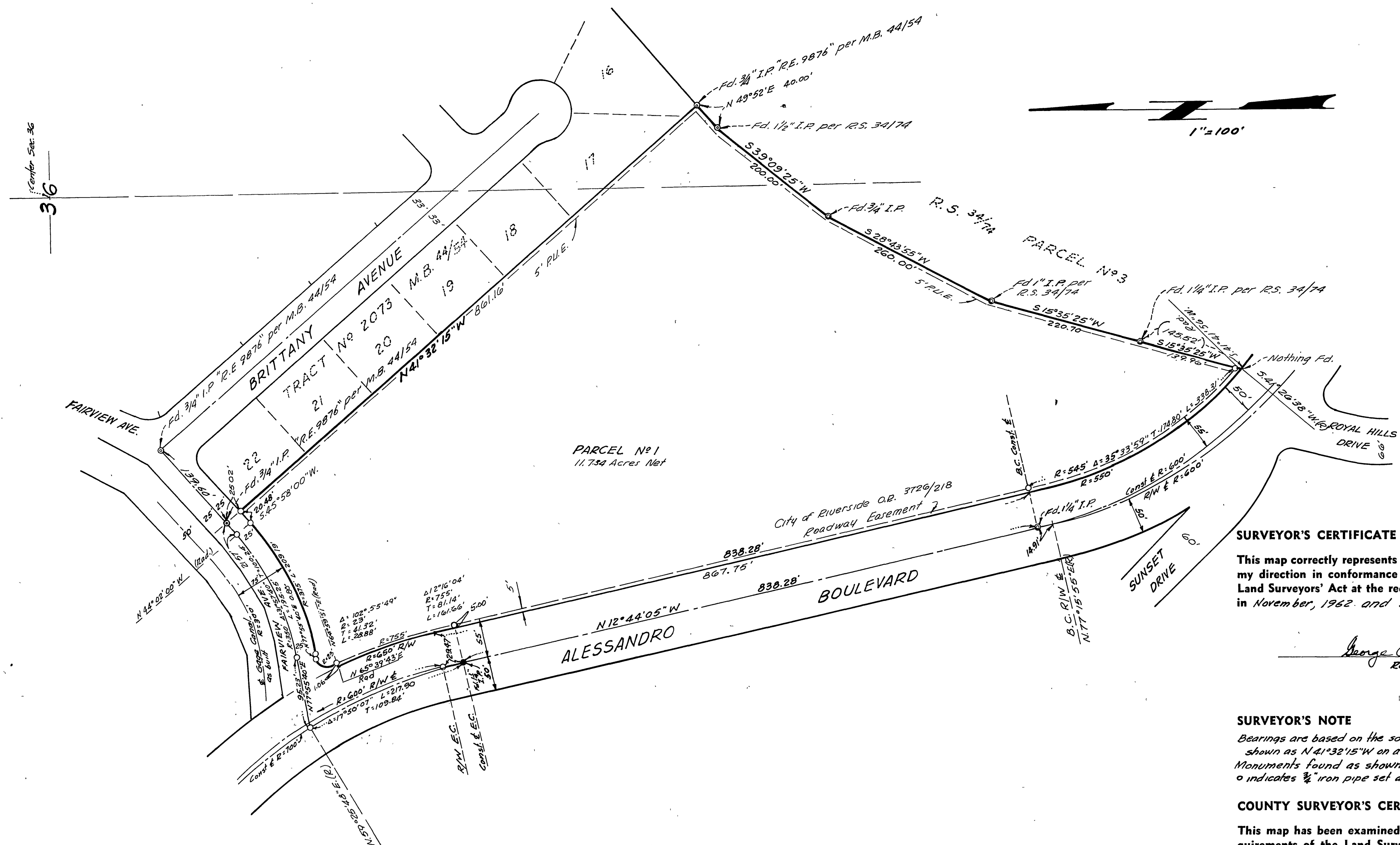
CRAWLEY & HAWKINS  
 Engineers and Surveyors

JANUARY, 1965  
 RIVERSIDE, CALIFORNIA

RECORDER'S CERTIFICATE

Filed for record this 13 day of APRIL, 1965 at 1:55 P.  
 in Book 45 of Record of Surveys at page 52 at the request  
 of the County Recorder.

W.D. BALOGH County Recorder  
 Fee \$ 5.00  
 No. 40088 By *Clayton B. Vaughn* Deputy



SURVEYOR'S CERTIFICATE

This map correctly represents a survey made by me or under  
 my direction in conformance with the requirements of the  
 Land Surveyors' Act at the request of First Baptist Church  
 in November, 1962 and January, 1965.

*George O. Crawley*  
 Reg. Civil Engineer No. 9455

SURVEYOR'S NOTE

Bearings are based on the southwesterly line of Tract No. 2073  
 shown as N 41° 32' 15\"/>

COUNTY SURVEYOR'S CERTIFICATE

This map has been examined for conformance with the re-  
 quirements of the Land Surveyors' Act this 12th day of  
 April, 1965.

A.C. KEITH County Surveyor  
 By *J. M. Smith* Deputy  
 S.R.