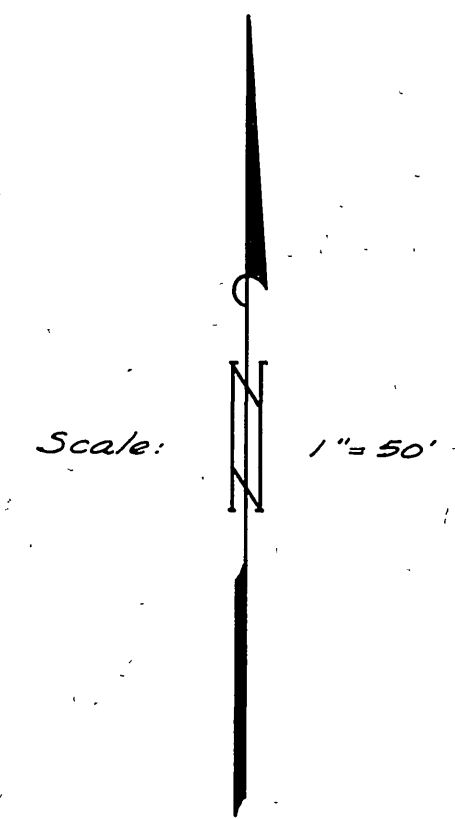
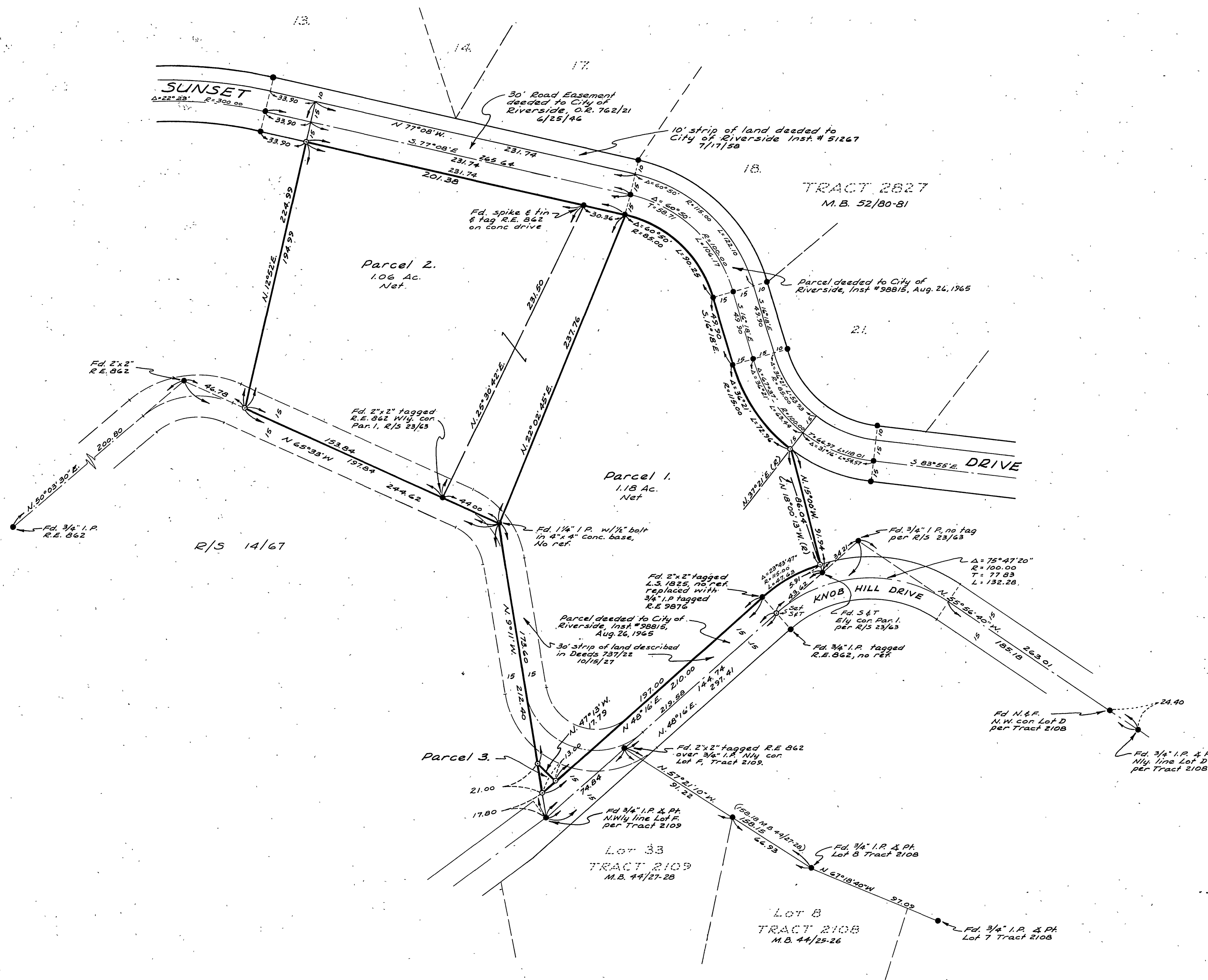


IN THE CITY OF RIVERSIDE RECORD OF SURVEY

of a portion of the S.W. 1/4 of Section 36, T.25, R.5W, S.B.B. & M.

RECORDER'S CERTIFICATE

Filed for record this 14 day of September 1965 at 12:30 P.M.
in Book 46 of Record of Surveys at page 98 at the
request of the County Surveyor
Fee \$ 5.00 W.D. BALOGH, County Recorder
No. 115,377 By Dean B. Vander
Deputy



ALBERT A. WEBB ASSOCIATES
CIVIL ENGINEERS
RIVERSIDE CALIFORNIA
JULY 1965

SURVEYOR'S CERTIFICATE

This map correctly represents a survey made by me or under my direction in conformance with the requirements of the Land Surveyors' Act at the request of Mathea A. McKinley in July, 1965

Albert A. Webb
R.C.E. No. 9876

SURVEYOR'S NOTES

Basis of Bearings is the centerline of Sunset Drive taken as N. 77° 08' W. as same is shown on map of Tract 2827 in file in Book 52 of Maps, Pages 80-81, Riverside County Records.

Found 3/4" I.P. tagged R.E. 9876 at all points shown thus: ●, unless otherwise noted.

Set 3/4" I.P. tagged R.E. 9876 at all points shown thus: ○, unless otherwise noted.

COUNTY SURVEYOR'S CERTIFICATE

This map has been examined for conformance with the requirements of the Land Surveyors' Act this 13 day of September, 1965

A.C. KEITH, County Surveyor
By J. M. Keith
Deputy