

IN THE CITY OF NORCO  
AND  
THE COUNTY OF RIVERSIDE

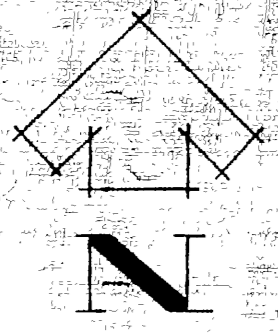
# RECORD OF SURVEY

OF LOT 19 AND A PORTION OF LOT 20 AND PORTIONS OF SECTION 17 AND FRACTIONAL SECTIONS 19 & 20, T39, R6W, AS SHOWN ON MAP OF RANCHO LA SIERRA SEPULVEDA, M.B. 6/70, REC. OF RIV. CO., CALIF. AND A PORTION OF FRACTIONAL SECTION 21, T39, R6W, AS SHOWN OF PLAT OF RANCHO EL SOBRIANTE DE SAN JACINTO, M.B. 1/8, REC. OF S.B. CO., CALIFORNIA.  
AUGUST 1965  
J.F. DAVIDSON ASSOCIATES

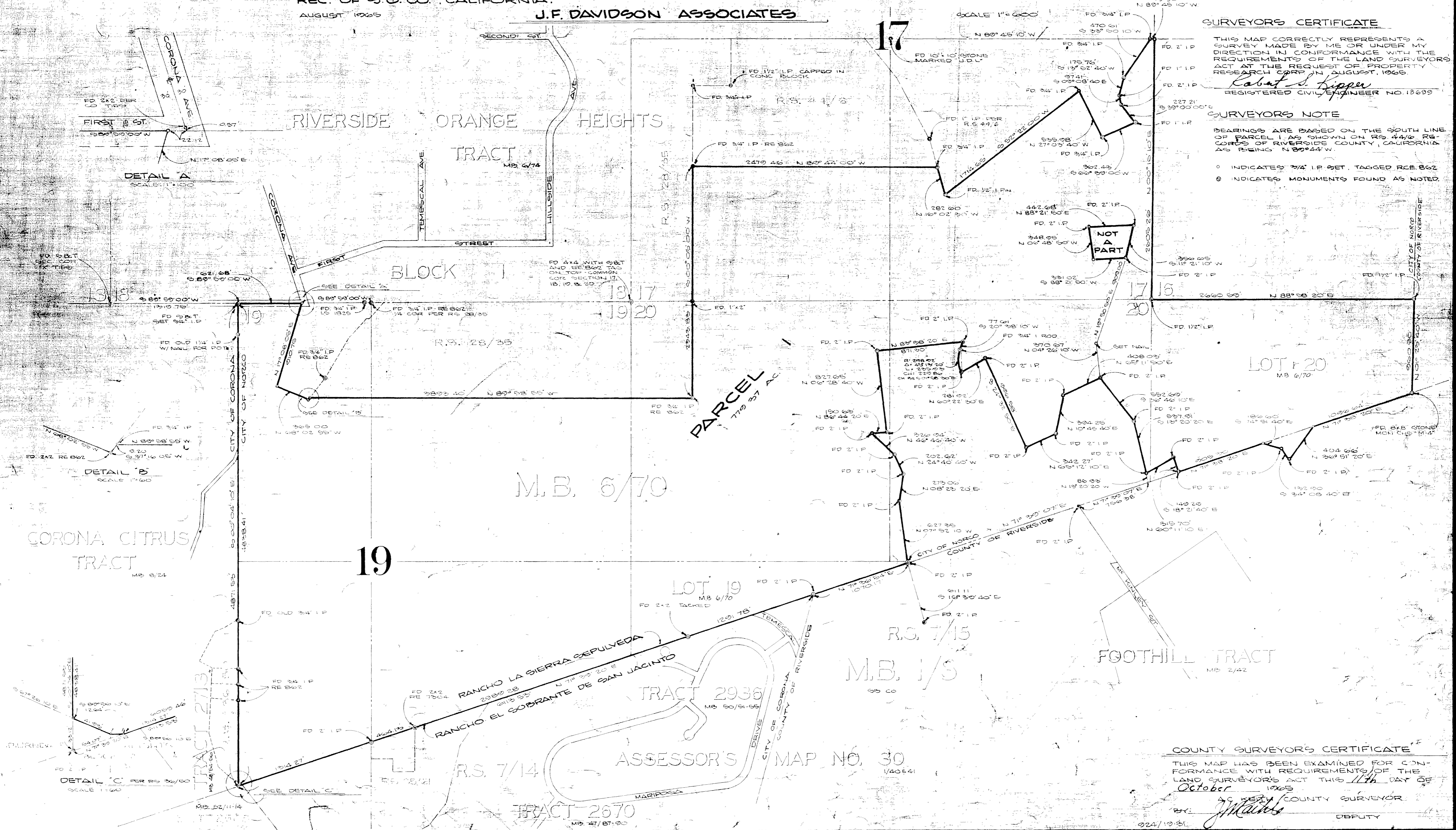
RECORDER'S CERTIFICATE  
FILED FOR RECORD THIS 11 DAY OF OCTOBER 1965 AT 4:40 P.M. IN BOOK 47 OF RECORD OF SURVEYS AT PAGE 17 AT THE REQUEST OF THE COUNTY SURVEYOR.  
FEE \$5.00 W.D. BALOGH COUNTY RECORDER  
NO 1111 BY *Raimo P. Vaughn* DEPUTY

SURVEYORS CERTIFICATE  
THIS MAP CORRECTLY REPRESENTS A SURVEY MADE BY ME OR UNDER MY DIRECTION IN CONFORMANCE WITH THE REQUIREMENTS OF THE LAND SURVEYORS ACT AT THE REQUEST OF PROPERTY RESEARCH CORP. IN AUGUST, 1965.  
*Robert S. Lipper*  
REGISTERED CIVIL ENGINEER NO. 13699

SURVEYORS NOTE  
BEARINGS ARE BASED ON THE SOUTH LINE OF PARCEL 1 AS SHOWN ON RS 44/6 RECORDS OF RIVERSIDE COUNTY, CALIFORNIA AS BEING N 89° 44' W.  
O INDICATES 3/4" I.P. SET, TAGGED RCE 862  
@ INDICATES MONUMENTS FOUND AS NOTED.



SCALE 1" = 600'



DETAIL 'A'  
SCALE 1" = 100'

DETAIL 'B'  
SCALE 1" = 600'

DETAIL 'C'  
SCALE 1" = 600'

COUNTY SURVEYOR'S CERTIFICATE  
THIS MAP HAS BEEN EXAMINED FOR CONFORMANCE WITH REQUIREMENTS OF THE LAND SURVEYORS ACT THIS 11th DAY OF October 1965  
BY: *J. MacIsaac* COUNTY SURVEYOR  
DEPUTY

RS. 47/17

RS 47/17

RS 47/17