

IN THE CITY OF RIVERSIDE

# RECORD OF SURVEY

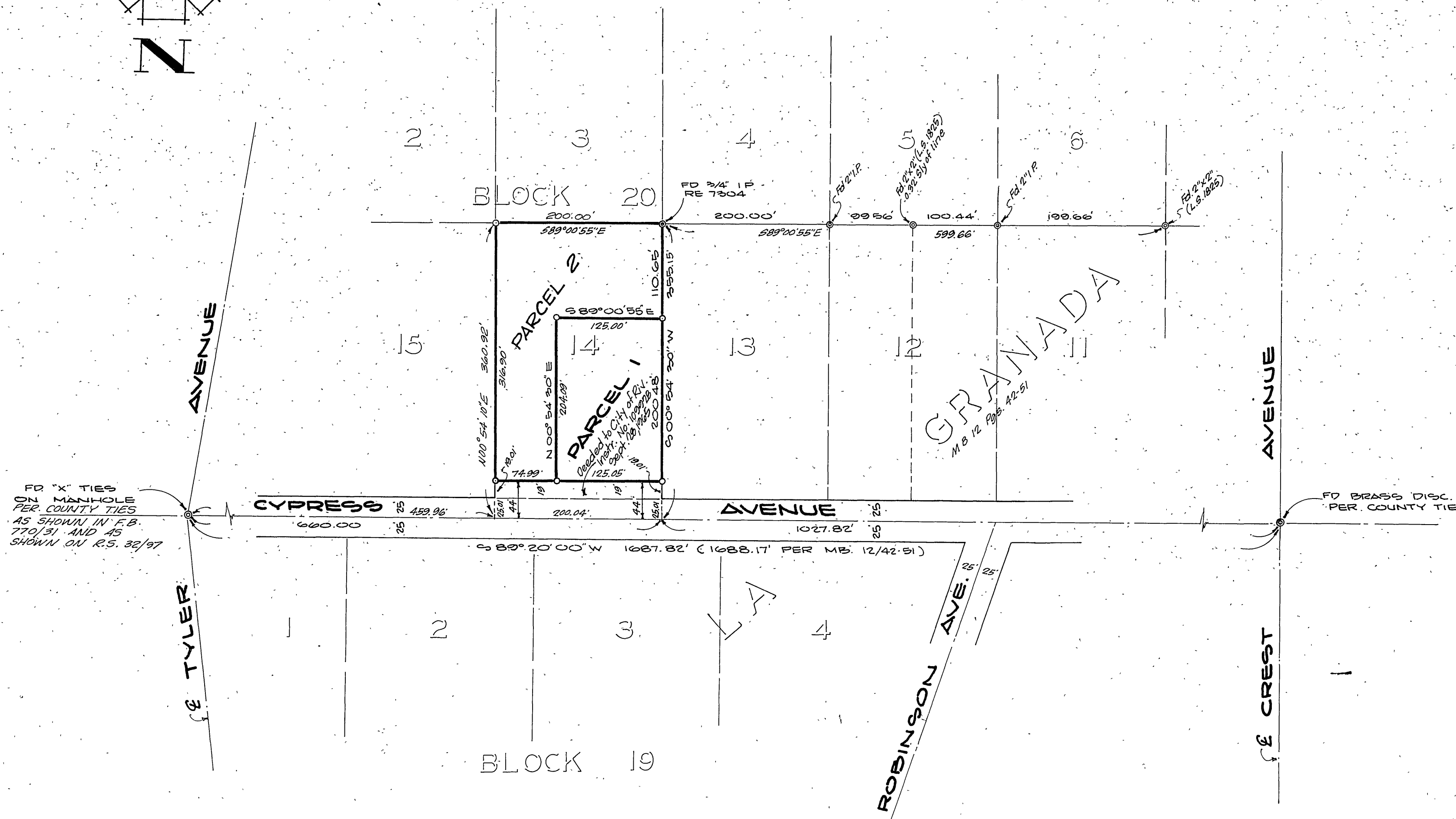
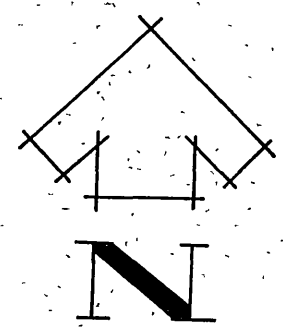
OF A PORTION OF LOT 14, BLOCK 20, OF LA GRANADA,  
RECORDED IN MAP BOOK 12, PAGES 42-51, RECORDS OF  
RIVERSIDE COUNTY, CALIFORNIA, LOCATED IN RANCHO LA  
SIERRA SEPULVEDA.  
AUGUST, 1965

SCALE: 1"=100'

J.F. DAVIDSON ASSOCIATES

### RECORDER'S CERTIFICATE

Filed for record this 3 day of December, 1965 at 2:45 P.M.  
in Book 47 of Record of Surveys at page 62 at the request  
of the County Surveyor.  
Fee \$ 5.00 W.D. BALOGH County Recorder  
No. 175379 By Dean B. Vaughn DEPUTY



### SURVEYOR'S CERTIFICATE

This map correctly represents a survey made by me or under  
my direction in conformance with the requirements of the  
Land Surveyors' Act at the request of EVERETTE MASON  
in AUGUST, 1965

J.F. Davidson  
REGISTERED CIVIL ENGINEER NO. 862

### SURVEYOR'S NOTE

BEARINGS ARE BASED ON CENTERLINE OF  
CYPRESS AVE. BEING S 89° 20' 00" W PER  
MB 12/42-51 RECORDS OF RIVERSIDE COUNTY,  
CALIFORNIA.

- INDICATES 3/4" I.P. SET TAGGED R.C.E. 862.
- ⊙ INDICATES MONUMENTS FOUND AS NOTED.

### COUNTY SURVEYOR'S CERTIFICATE

This map has been examined for conformance with the  
requirements of the Land Surveyors' Act this 2nd day of  
December, 1965

A.C. KEITH County Surveyor  
By J. M. Mills DEPUTY