

IN THE CITY OF RIVERSIDE RECORD OF SURVEY

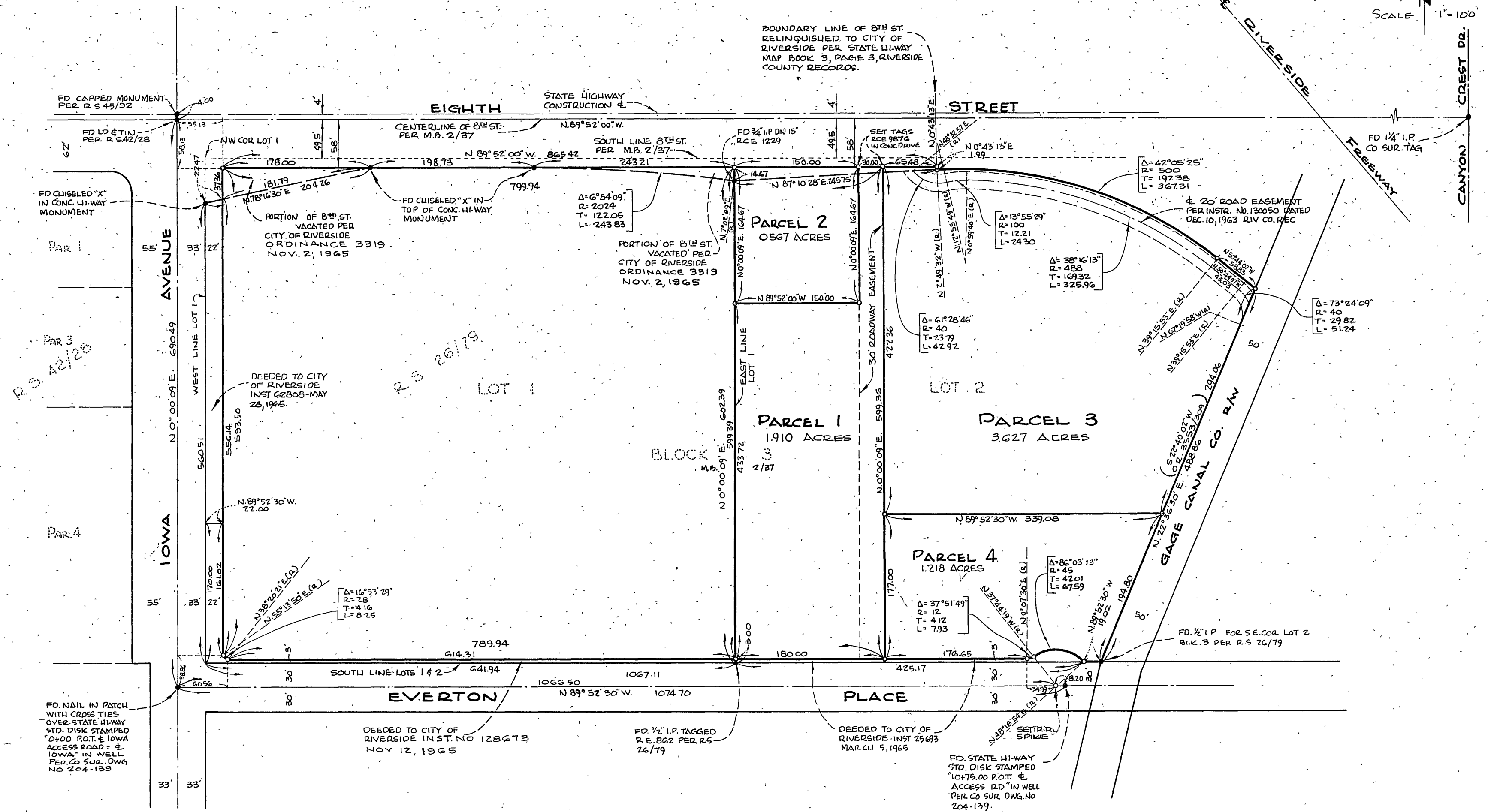
OF A PORTION OF LOTS 1 AND 2 IN BLOCK 3 OF THE SUBDIVISION OF SECTION 30, T.2 S., R.4 W., SAN BERNARDINO BASE AND MERIDIAN AS SHOWN BY MAP ON FILE IN BOOK 2 OF MAPS AT PAGE 37 THEREOF, RECORDS OF RIVERSIDE COUNTY, CALIFORNIA.

APRIL 1965 SCALE 1"=100'

BY
ALBERT A. WEBB ASSOCIATES
CIVIL ENGINEERS
RIVERSIDE CALIFORNIA

RECORDER'S CERTIFICATE

Filed for record this 13 day of DECEMBER 1965 at 3:40 PM
in Book 471 of Record of Surveys at page 82 at the
request of the County Surveyor
Fee \$ 5.00 W.D. BALOGH County Recorder
No. 6175872 By Alan B. Vaughn
DEPUTY



SURVEYOR'S CERTIFICATE

This map correctly represents a survey made by me or under my direction in conformance with the requirements of the Land Surveyors' Act at the request of W.L. McCUBBIN in APRIL, 1965.

Ernest N. Wulb
R.C.E. No. 9876

SURVEYOR'S NOTES

BASIS OF BEARINGS IS THE CENTERLINE OF EIGHTH ST. TAKEN AS N. 89° 52' 00" W. AS SAME IS SHOWN BY MAP ON FILE IN BOOK 26, PAGE 19 OF RECORDS OF SURVEY OF RIVERSIDE COUNTY, CALIFORNIA.
FOUND MONUMENTS AS NOTED AT ALL POINTS SHOWN THUS •
SET 1" IRON PIPE TAGGED R.E. 9876 AT ALL POINTS SHOWN THUS ○ UNLESS OTHERWISE NOTED.
BEARINGS AND DISTANCES SHOWN THUS () INDICATE RECORDING REFERENCE IN RIVERSIDE COUNTY RECORDS.

COUNTY SURVEYOR'S CERTIFICATE

This map has been examined for conformance with the requirements of the Land Surveyors' Act this 10 day of December 1965

A.C. KEITH County Surveyor
By J. W. Keith
DEPUTY