

471
89
R/S 47189

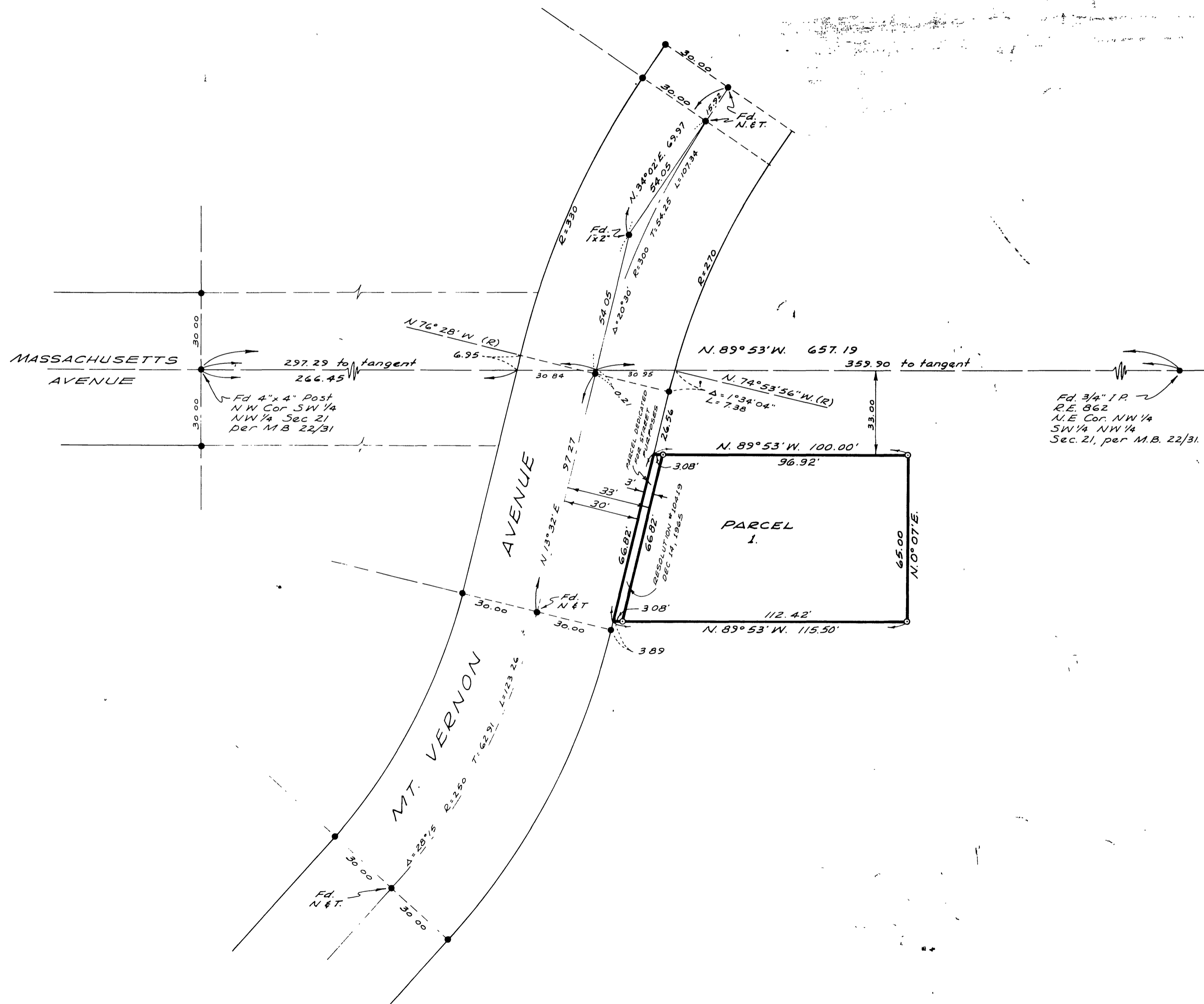
IN THE CITY OF RIVERSIDE RECORD OF SURVEY

OF A PORTION OF THE SW 1/4 OF THE
NW 1/4 OF SECTION 21, T.2S., R.4W.,
S.B.B.&M.

RECORDER'S CERTIFICATE

Filed for record this 3 day of JANUARY 1966 at 2:30 P.M.
in Book 47 of Record of Surveys at page 89 at the
request of the County Surveyor
Fee \$5.00 W.D. BALOGH, County Recorder
No. _____ By Lawson B. Langley
Deputy

Scale: 1"=30'



ALBERT A. WEBB ASSOCIATES
CIVIL ENGINEERS
RIVERSIDE CALIFORNIA
JULY 1965

SURVEYOR'S CERTIFICATE

This map correctly represents a survey made by
me or under my direction in conformance with the
requirements of the Land Surveyors' Act at the
request of CITY OF RIVERSIDE
in July, 1965

Emil N. Webb
R.C.E No 9876

SURVEYOR'S NOTES

1. Basis of Bearings is the north line of the SW 1/4 of the NW 1/4 of Section 21 T.2S., R.4W., S.B.B.&M as shown by map on file in the Office of the County Surveyor of Riverside County as Map No 623 P, shown as S 89°53'E
2. Set 1" IP tagged RE 9876 at all points shown thus: ○
3. Fd. 1/4" IP tagged County Surveyor at all points shown thus: ●, unless otherwise noted.

COUNTY SURVEYOR'S CERTIFICATE

This map has been examined for conformance
with the requirements of the Land Surveyors'
Act this 30 day of December 1965

A.C. KEITH, County Surveyor

By W. Keith
Deputy

R/S 47189