

IN THE CITY OF RIVERSIDE

# RECORD OF SURVEY

OF A PORTION OF LOT 2 OF CASTLEMANS ADDITION, MAP BOOK 3, PAGE 19, RECORDS OF SAN BERNARDINO COUNTY, CALIFORNIA. LOCATED IN SECTION 25, T.2S. R.5W., S.B.M.

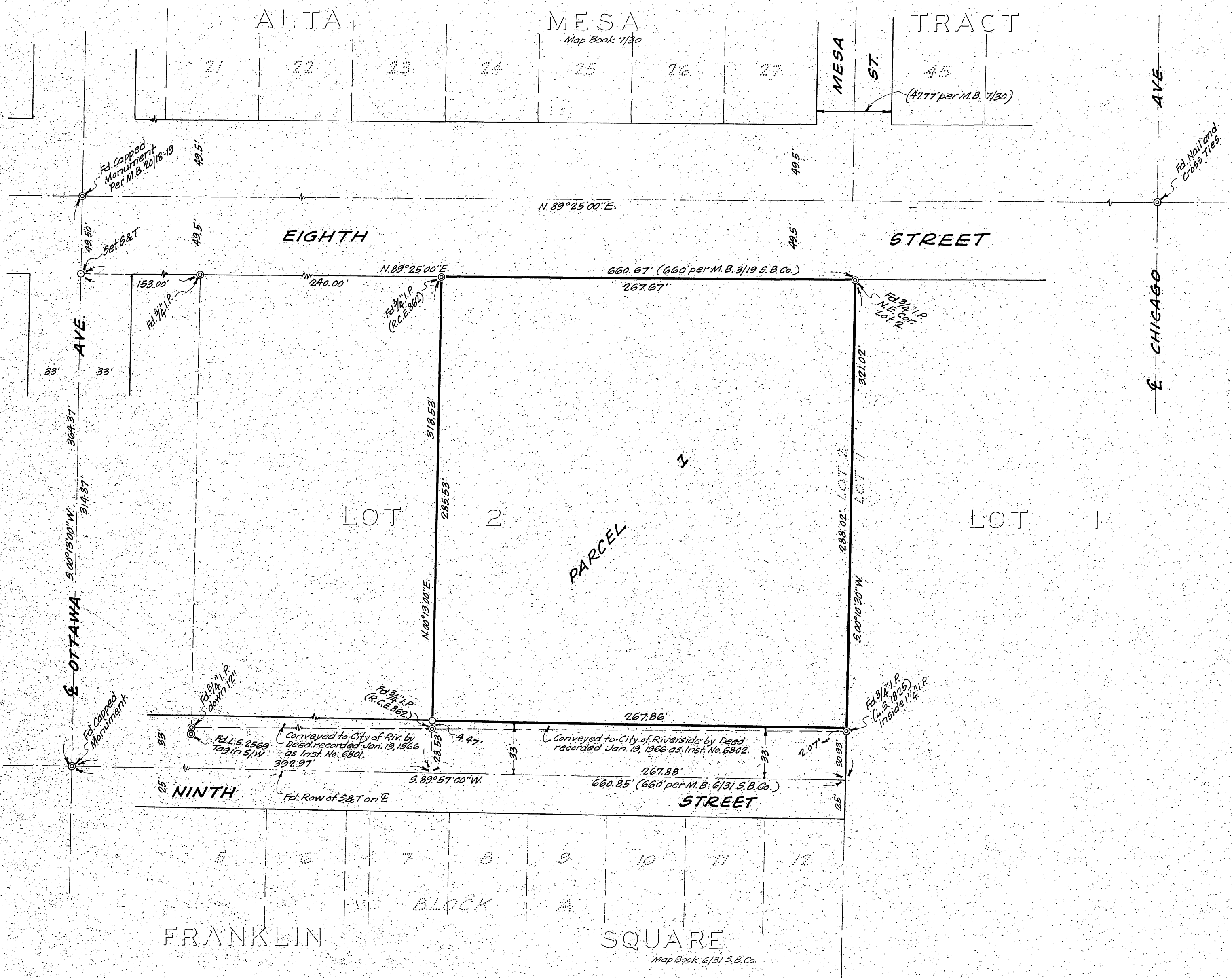
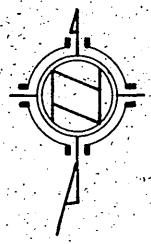
JAN. 1966

J. F. DAVIDSON ASSOCIATES

SCALE 1"=50'

### RECORDER'S CERTIFICATE

Filed for record this 19 day of JANUARY, 1966, at 4:00 P.M. in Book 48 of Record of Surveys at page 3 at the request of the County Surveyor.  
Fee \$ 5.00 W.D. BALOGH County Recorder  
No. 15411 By Ann B. Vaughn Deputy



### SURVEYOR'S CERTIFICATE

This map correctly represents a survey made by me or under my direction in conformance with the requirements of the Land Surveyors' Act at the request of TERRACE HOTELS, INC. in November, 1965.

J. F. Davidson  
Registered Engineer No. 862.

### SURVEYOR'S NOTE

Bearings are based on the center line of Ottawa Avenue, being S. 00° 13' 00\"/>

- indicate 3/4\"/>
- ⊙ indicates monument found as noted.

### COUNTY SURVEYOR'S CERTIFICATE

This map has been examined for conformance with the requirements of the Land Surveyors' Act this 18 day of January, 1966.  
A.G. KEITH County Surveyor

By J. Mackle Deputy