

IN THE CITY OF RIVERSIDE RECORD OF SURVEY

BEING A SUBDIVISION OF A PORTION OF LOT
28, BLOCK 26 OF VILLAGE OF ARLINGTON,
AS SHOWN IN MAP BOOK I PAGE 62, OF MAPS,
RECORDS OF SAN BERNARDINO COUNTY,
STATE OF CALIFORNIA.
SEC. 18 , T.3.S , R.5.W. , S. B.M.

JANUARY 1966

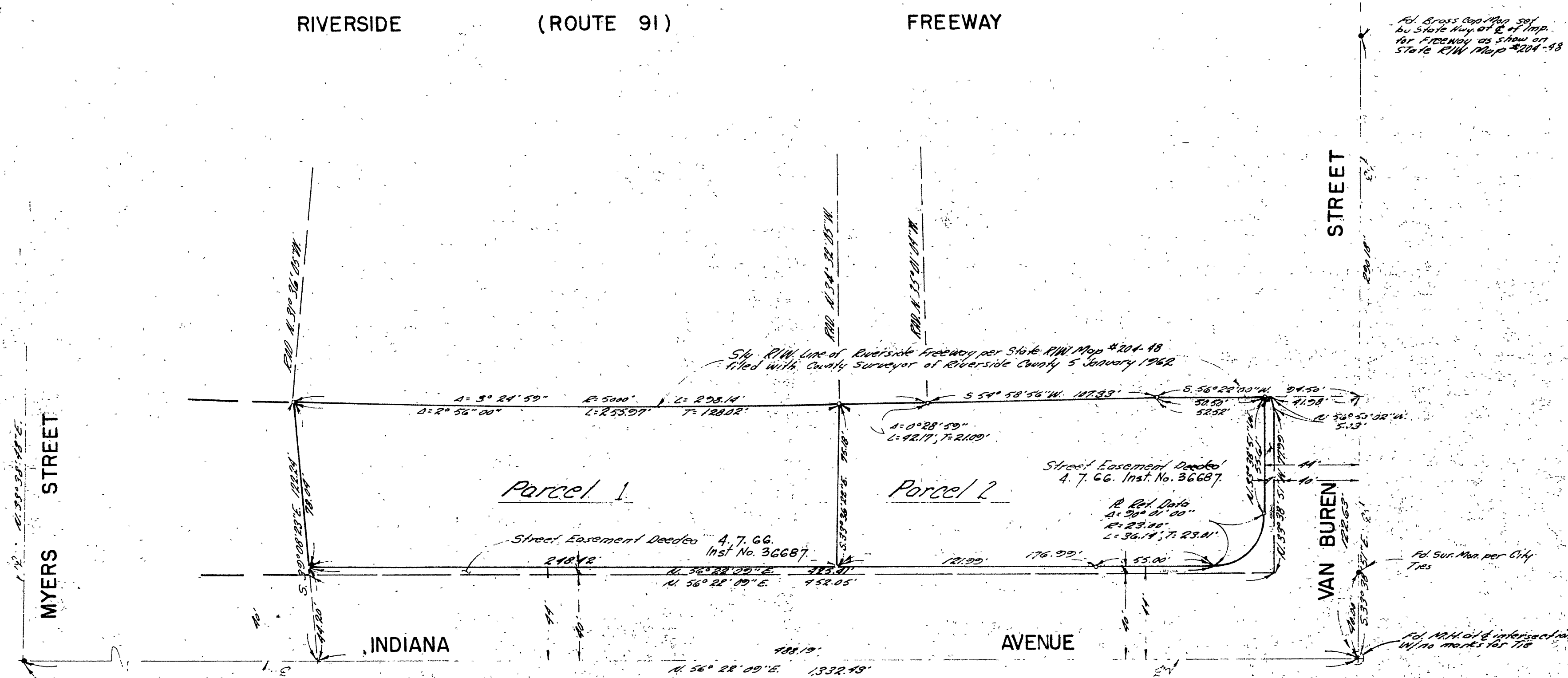
HOLM, TAIT AND ASSOCIATES

SCALE 1" = 40'

RECORDER'S CERTIFICATE

Filed for record this 19 day of May, 1966 at 2:15 P.M.
in Book 48 of Record of Surveys at page 83 at the request
of the County Surveyor.

W.D. BLOGH
County Recorder
Fee \$5.00
No. 52700 By *Caron B. Jaffe* DEPUTY



SURVEYOR'S CERTIFICATE

This map correctly represents a survey made by me or under my direction in conformance with the requirements of the Land Surveyors' Act at the request of Union Oil Corp. of Calif. in 4 January, 1966

John J. Holm
John J. Holm Dec. 1965
1-18-66

SURVEYOR'S NOTE

The basis of bearing shown on this map is the Centerline of Van Buren Street shown as S 38° 38' 51" E on State R/W Map #204-48 filed with the County of Riverside's County Surveyor on 5 January, 1962.

Indicates Found Monuments as shown in 2-12-1965 RLE 14705

COUNTY SURVEYOR'S CERTIFICATE

This map has been examined for conformance with the requirements of the Land Surveyors' Act this 19 day of May, 1966

A. Keith
County Surveyor
By *J. M. Kaito* DEPUTY

R.S. 48/83