

IN THE CITY OF RIVERSIDE

RECORD OF SURVEY

OF A PORTION OF LOT 13, BLOCK 9 OF THE LANDS OF THE RIVERSIDE LAND AND IRRIGATING CO., MB 1/70 RECORDS OF SAN BERNARDINO COUNTY CALIFORNIA, LOCATED IN SECTION 7, T.3S., R.5W. S.B.B. & M.

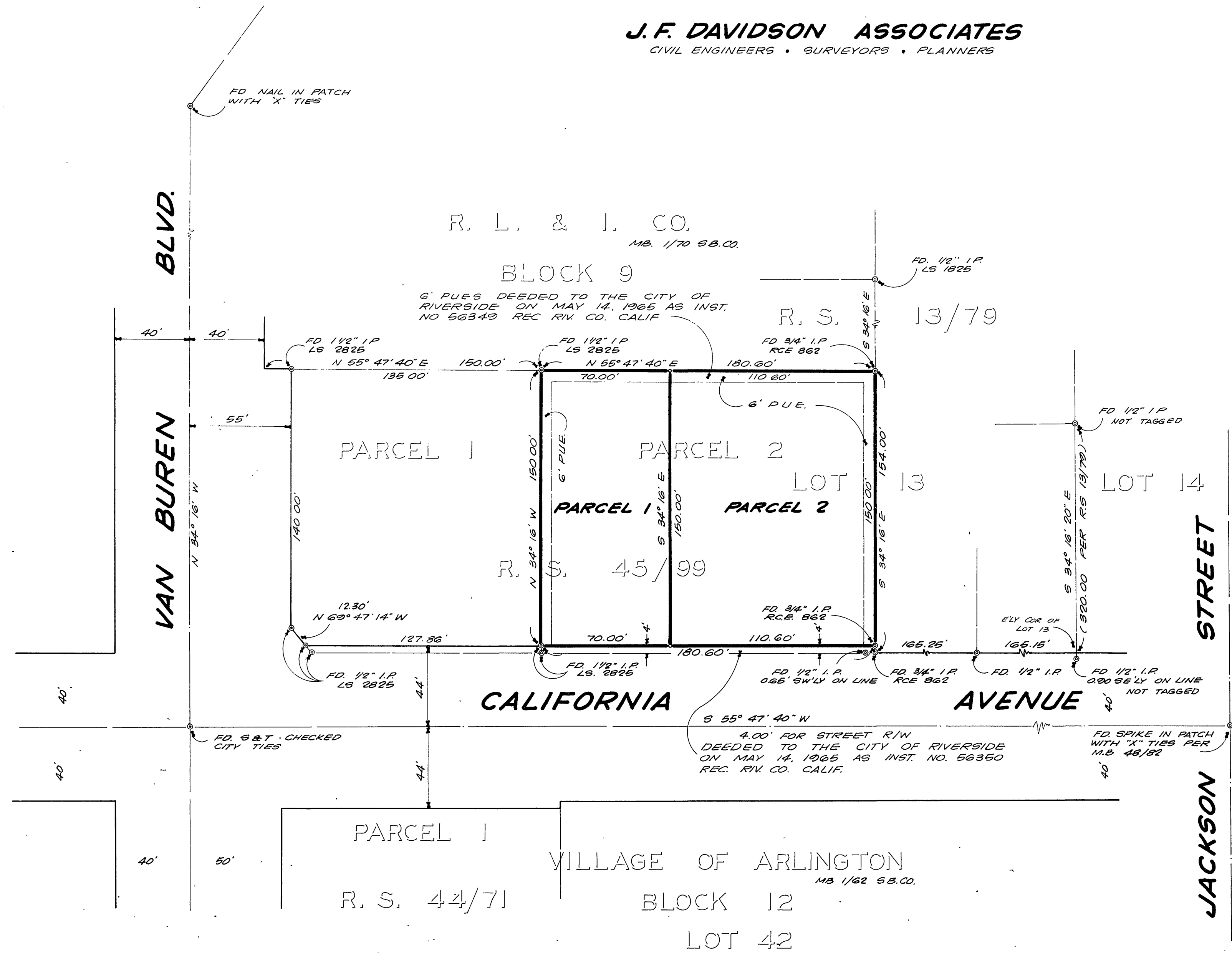
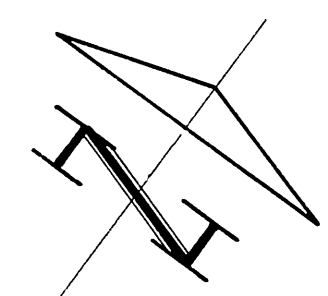
JULY 1966

SCALE: 1" = 40'

J.F. DAVIDSON ASSOCIATES
CIVIL ENGINEERS • SURVEYORS • PLANNERS

RECORDER'S CERTIFICATE

Filed for record this 20th day of Aug. 1966 at 3:45 P.M. in Book 49 of Record of Surveys at page 40 at the request of the County Surveyor.
Fee \$ 5⁰⁰ W.D. BALOGH County Recorder
No. _____ By Olene Halderon DEPUTY



SURVEYOR'S CERTIFICATE

This map correctly represents a survey made by me or under my direction in conformance with the requirements of the Land Surveyors' Act at the request of Bohr & Mumper in JULY 1966

Robert S. Kipper
REGISTERED CIVIL ENGINEER NO. 13699

SURVEYOR'S NOTE

BEARINGS ARE BASED ON THE CENTERLINE OF CALIFORNIA AVENUE AS BEING S 55° 47' 40" W, AS SHOWN ON R.S. 45/99 REC. OF RIV. CO. CALIF.

- o INDICATES 3/4" I.P. SET, TAGGED R.C.E. 862
- o INDICATES MONUMENTS FOUND AS NOTED, PER R.S. 45/99.

COUNTY SURVEYOR'S CERTIFICATE

This map has been examined for conformance with the requirements of the Land Surveyors' Act this 26 day of August 1966
A.C. KEITH County Surveyor

By J. Maibach DEPUTY