

IN THE CITY OF RIVERSIDE RECORD OF SURVEY

OF A PORTION OF THE S.W. 1/4 OF THE S.E. 1/4 OF THE S.E. 1/4 OF SECTION 32, T. 2 S., R. 5 W., S. B. B. & M. IN THE COUNTY OF RIVERSIDE - NOVEMBER 1966

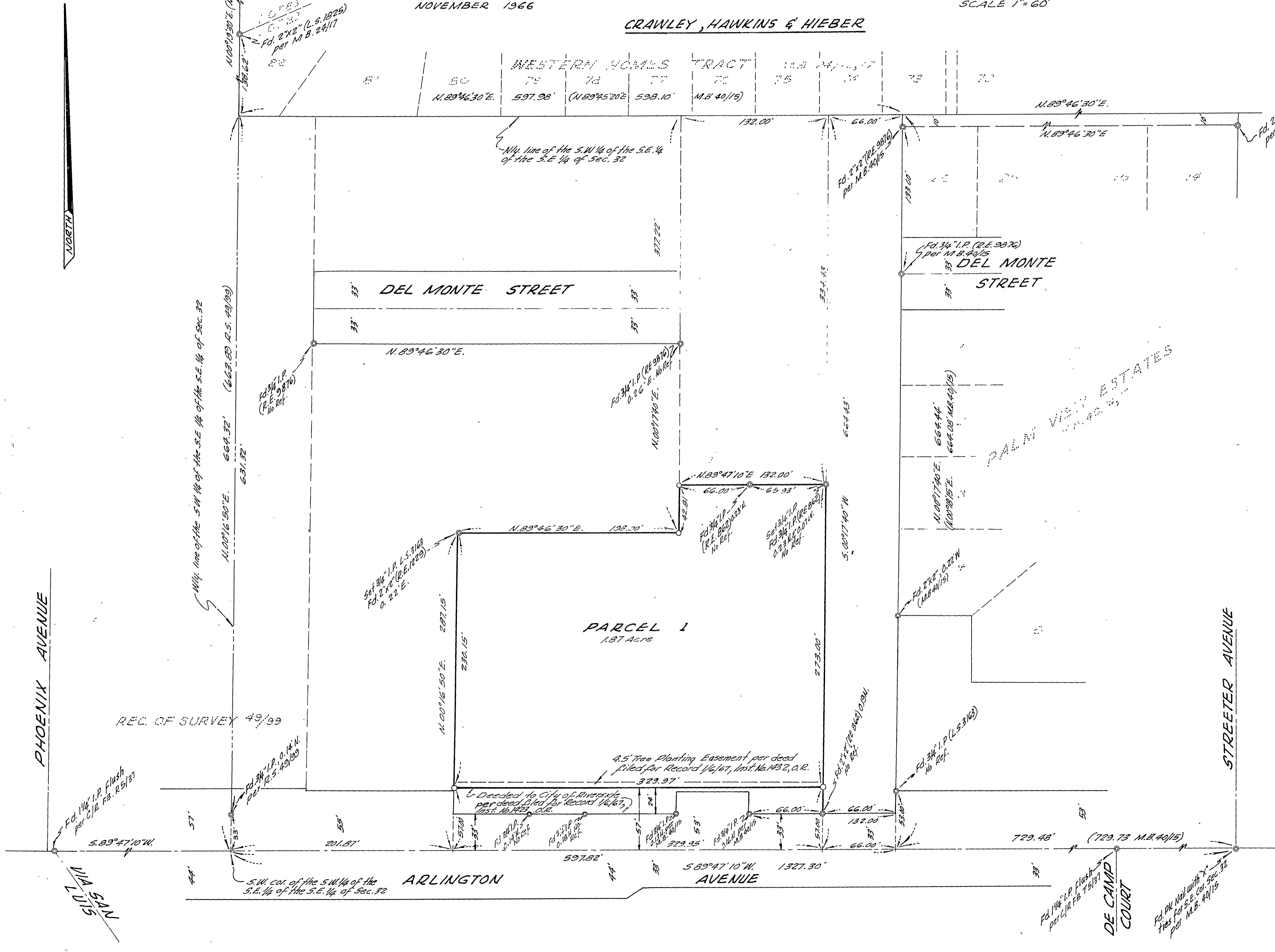
CRAWLEY, HAWKINS & HIEBER

SCALE 1" = 60'

RECORDER'S CERTIFICATE

Filed for record this 11 day of JANUARY, 1967 at 10:30 A.M. in Book 50 of Record of Surveys at page 6 at the request of the County Surveyor.

W. D. BALOGH County Recorder
Fee \$ 5.00
No. _____ By Devin P. Vaughn DEPUTY



SURVEYOR'S CERTIFICATE

This map correctly represents a survey made by me or under my direction in conformance with the requirements of the Land Surveyors' Act at the request of FLORY DEVEL. CO. in November, 1965

Clinton Hawkins
L.S. 3163

SURVEYOR'S NOTE

Bearings are based on the center line of ARLINGTON AVE. being S. 89° 47' 10" W., as shown on map of "PALM VIEW ESTATES", M.B. 40/14 & 15, Records of Riverside County, California.

o Indicates 3/4" I.P., tagged L.S. 3163, set, unless otherwise noted.

COUNTY SURVEYOR'S CERTIFICATE

This map has been examined for conformance with the requirements of the Land Surveyors' Act this 11 day of January, 1967

A. C. REITH County Surveyor
By J. M. Raible DEPUTY
F.B. 57152 E.P.