

IN THE CITY OF RIVERSIDE RECORD OF SURVEY

OF A PORTION OF THE WEST 1/2 OF THE N.W. 1/4.
OF SECTION 7, T35, R4W, S.B.B.&M., IN THE COUNTY
OF RIVERSIDE, STATE OF CALIFORNIA.
OCTOBER 1966

SCALE: 1" = 200'

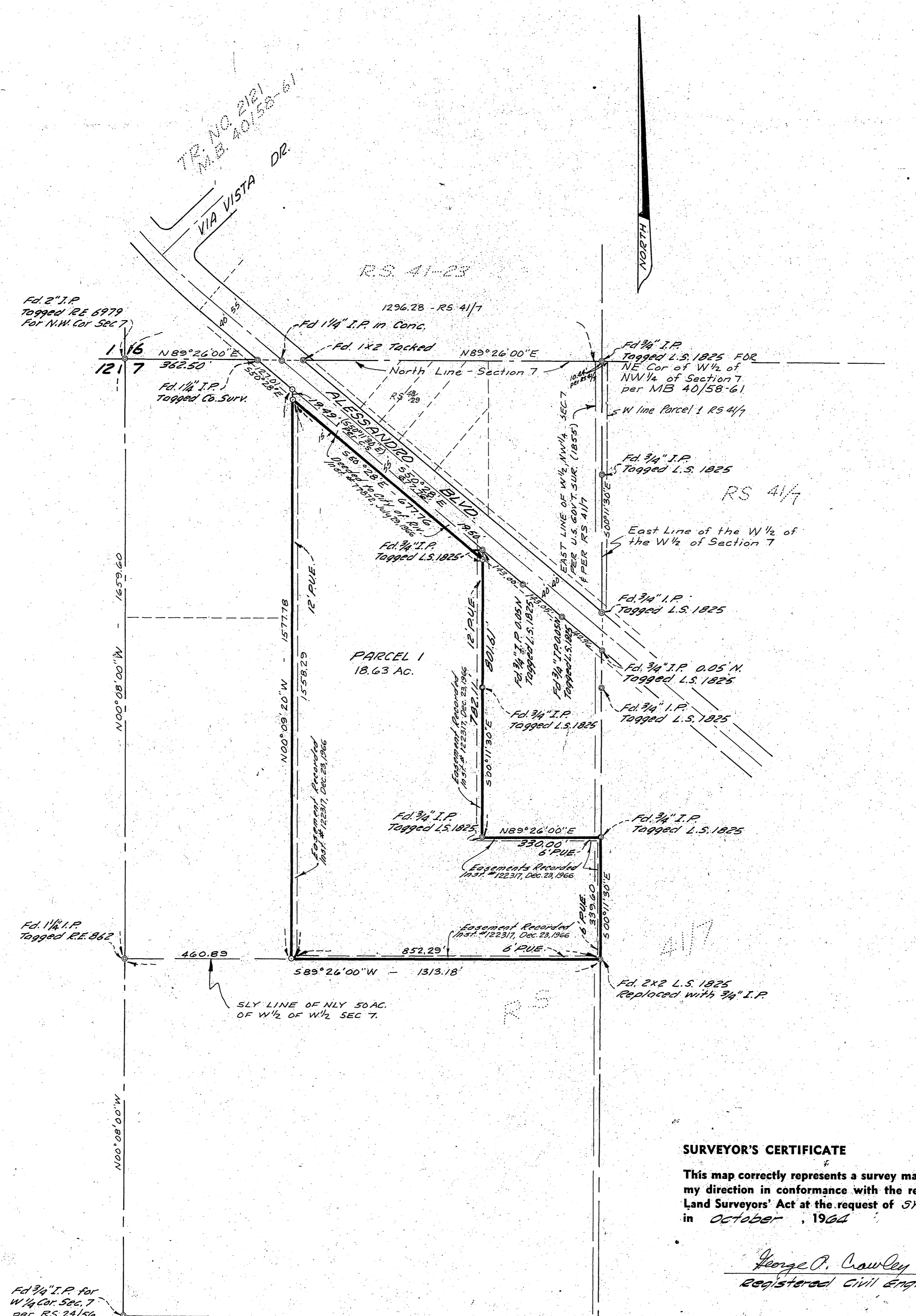
RECORDER'S CERTIFICATE

Filed for record this 26 day of JANUARY, 1967 at 10:06 A.M.
in Book 50 of Record of Surveys at page 12 at the request
of the County Surveyor.

W. D. BALOGH County Recorder

Fee \$ 5.00
No. 7212

By Carson B. Vaughn Deputy



SURVEYOR'S CERTIFICATE

This map correctly represents a survey made by me or under
my direction in conformance with the requirements of the
Land Surveyors' Act at the request of SYDNEY J. HAYTER
in October, 1966

George O. Crowley
Registered Civil Engineer No. 9455

SURVEYOR'S NOTE

Bearings are based on the north line of
Section 7 which bears N89°26'E per MIB
40/58-61 records of Riverside Co., Calif.
○ indicates 3/4" I.P. set tagged R.E. 9455
● indicates monuments found (as noted)

COUNTY SURVEYOR'S CERTIFICATE

This map has been examined for conformance with the re-
quirements of the Land Surveyors' Act this 25 day of
January, 1967

A.C. SMITH County Surveyor

By J.M. Riebel Deputy
69-8-67