

IN THE CITY OF RIVERSIDE, COUNTY OF RIVERSIDE

RECORD OF SURVEY

OF LOTS 3, 4, 5 AND 6 IN BLOCK 39 OF LA GRANADA, AS SHOWN BY MAP ON FILE IN BOOK 12 AT PAGES 42 TO 51 INCLUSIVE, RECORDS OF RIVERSIDE COUNTY, CALIFORNIA

OCT. 1967

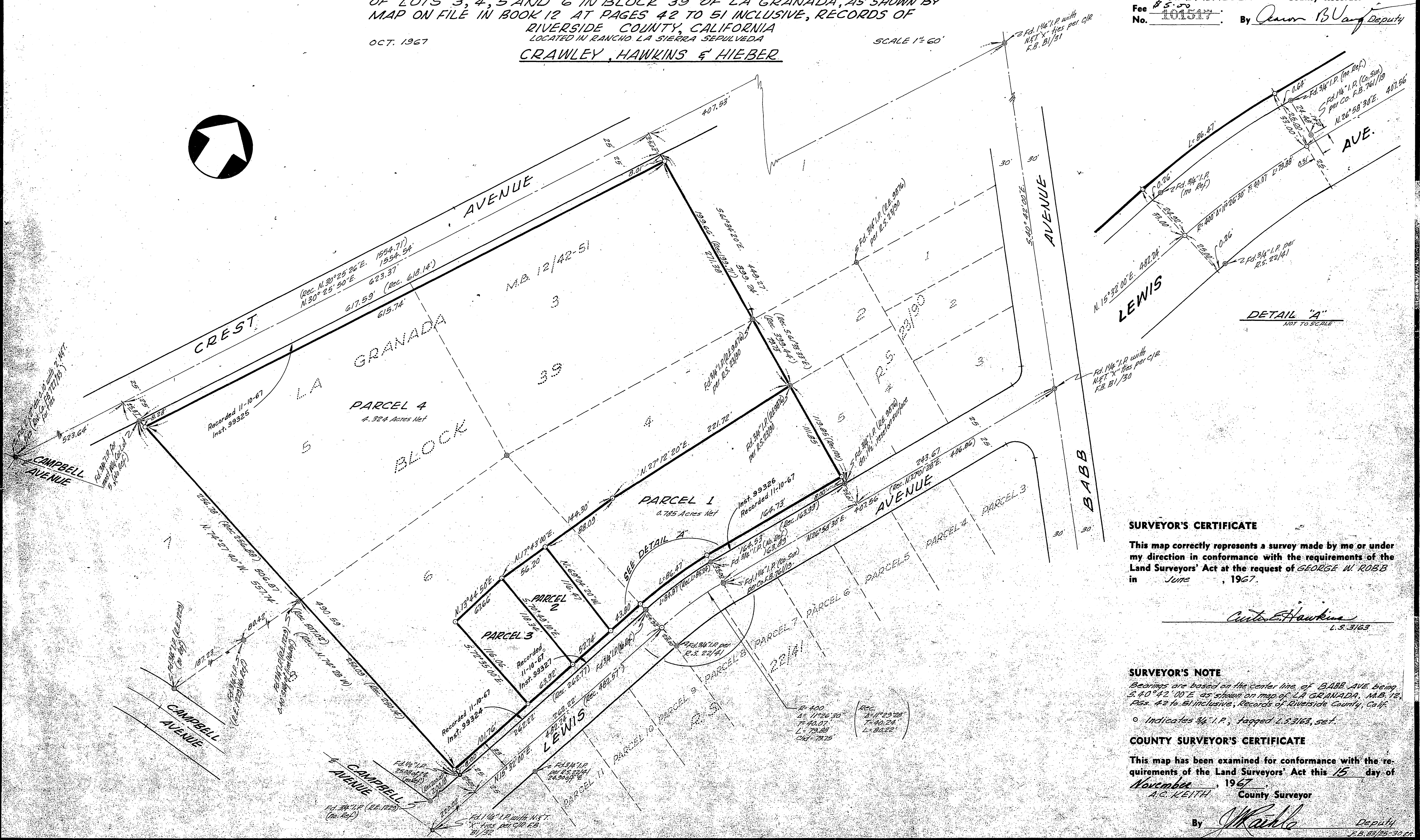
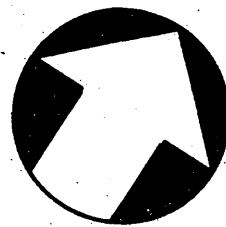
LOCATED IN RANCHO LA SIERRA SEPULVEDA
CRAWLEY, HAWKINS & HIEBER

SCALE 1" = 60'

RECORDER'S CERTIFICATE

Filed for record this 17 day of November 1967 at 1:30 P.M. in Book 51 of Record of Surveys at page 100 at the request of the County Surveyor.

Fee \$ 5.00 By M. D. BALOGH County Recorder
No. 101517 By Ann B. Van Dyke Deputy



DETAIL "A"
NOT TO SCALE

SURVEYOR'S CERTIFICATE

This map correctly represents a survey made by me or under my direction in conformance with the requirements of the Land Surveyors' Act at the request of **GEORGE W. ROBB** in June, 1967.

Arthur E. Hawkins
L.S. 3163

SURVEYOR'S NOTE

Bearings are based on the center line of BABB AVE. being S. 40° 42' 00" E. as shown on map of LA GRANADA, M.B. 12, Pgs. 42 to 51 inclusive, Records of Riverside County, Calif.

o Indicates 3/4" I.P., tagged L.S. 3163, set.

COUNTY SURVEYOR'S CERTIFICATE

This map has been examined for conformance with the requirements of the Land Surveyors' Act this 15 day of November, 1967.

A.C. KEITH County Surveyor
By W. K. ... Deputy