

IN THE COUNTY OF RIVERSIDE
RECORD OF SURVEY

OF PORTIONS OF SECTIONS 28,32 AND 33 TOWNSHIP 2 SOUTH, RANGE 6 WEST AS SAID SECTIONS ARE PRODUCED SOUTHERLY FROM THE SECTION SURVEY OF THE JURUPA RANCHO RECORDED IN MAP BOOK 9 PAGE 33, SAN BERNARDINO COUNTY RECORDS.

OCTOBER, 1967

SCALE: 1" = 300'

RECORDER'S CERTIFICATE

Filed for record this 30 day of November 1967 at 10:55 A.M. in Book 52 of Record of Surveys at page 9 at the request of the County Surveyor.

Fee \$ 5.00 W.D. Balogh County Recorder

No. _____ By Aaron B. Vaughn Deputy

RS 52/19

SURVEYORS NOTES:

Bearings are based on the line between Stations 2 and 3 of Santa Ana River Development Co. Shown as N 89°35'00"W on Record of Survey map, book 16, pages 52 thru 55, Riverside County Records.

Courses shown thus (N 0°00'00"E 100.00') are of record on R.S. 16/52-55 Riverside County Records.

⊙ Indicates monuments found as noted.

○ Indicates 3/4" I.P. set and tagged R.C.E. 7304

SURVEYOR'S CERTIFICATE

This map correctly represents a survey made by me or under my direction in conformance with the requirements of the Land Surveyors' Act at the request of SANTA ANA RIVER DEVELOPMENT CO. in OCTOBER 1967

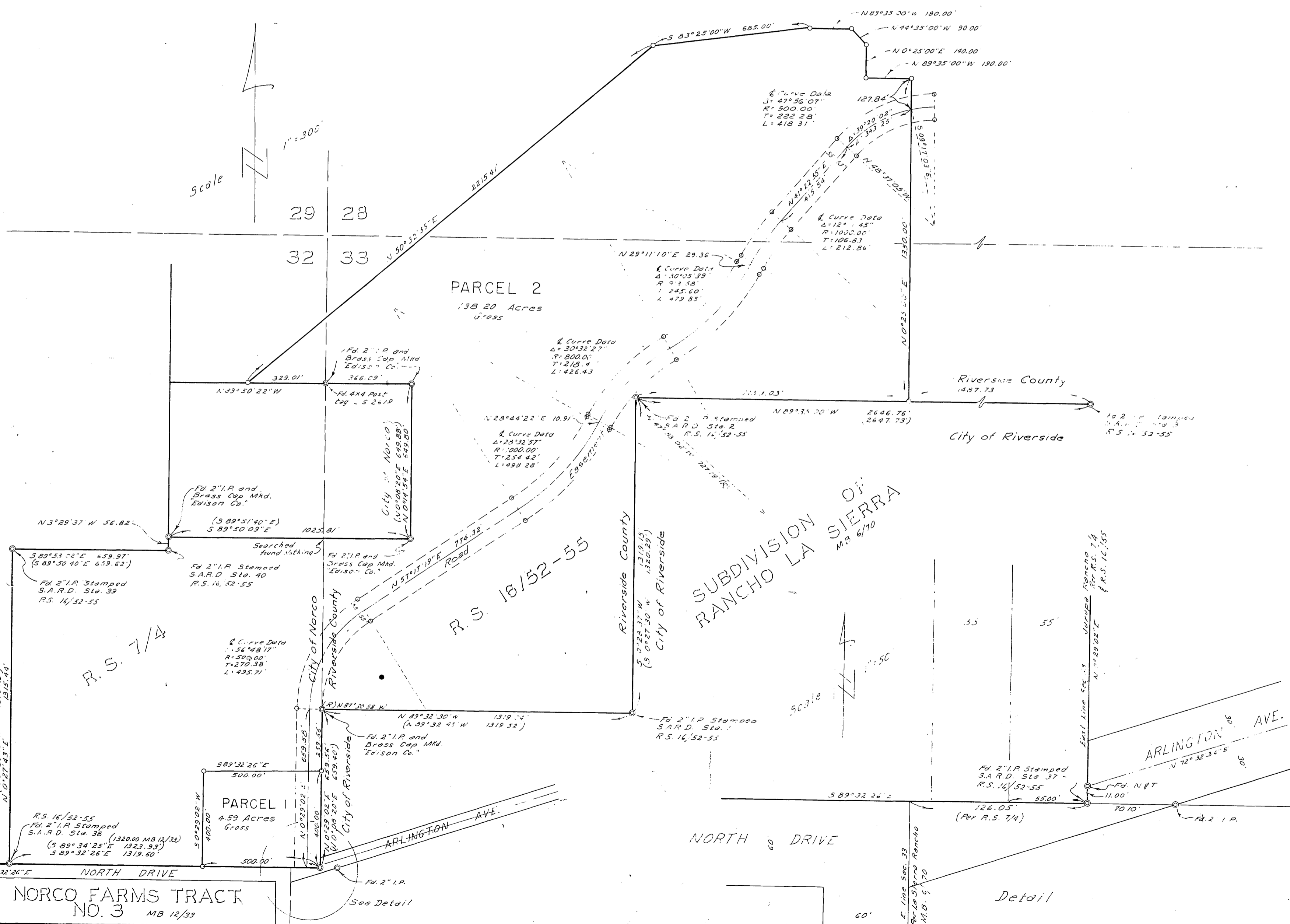
Hugh M. Gallacher
 R.C.E. 7304

COUNTY SURVEYOR'S CERTIFICATE

This map has been examined for conformance with the requirements of the Land Surveyors' Act this 30 day of November 1967

A.C. Keith County Surveyor

By Mark Deputy



RS 52/19