

5370
R/S 5370

IN THE CITY OF RIVERSIDE

RECORD OF SURVEY

OF A PORTION OF LOT 1, BLOCK 71, ARLINGTON HEIGHTS, AS SHOWN BY MAP ON FILE IN M. B. 11, PAGE 20-21, RECORDS OF SAN BERNARDINO COUNTY, IN SECTION 3, T.3 S., R.5 W. S.B.B. & M.

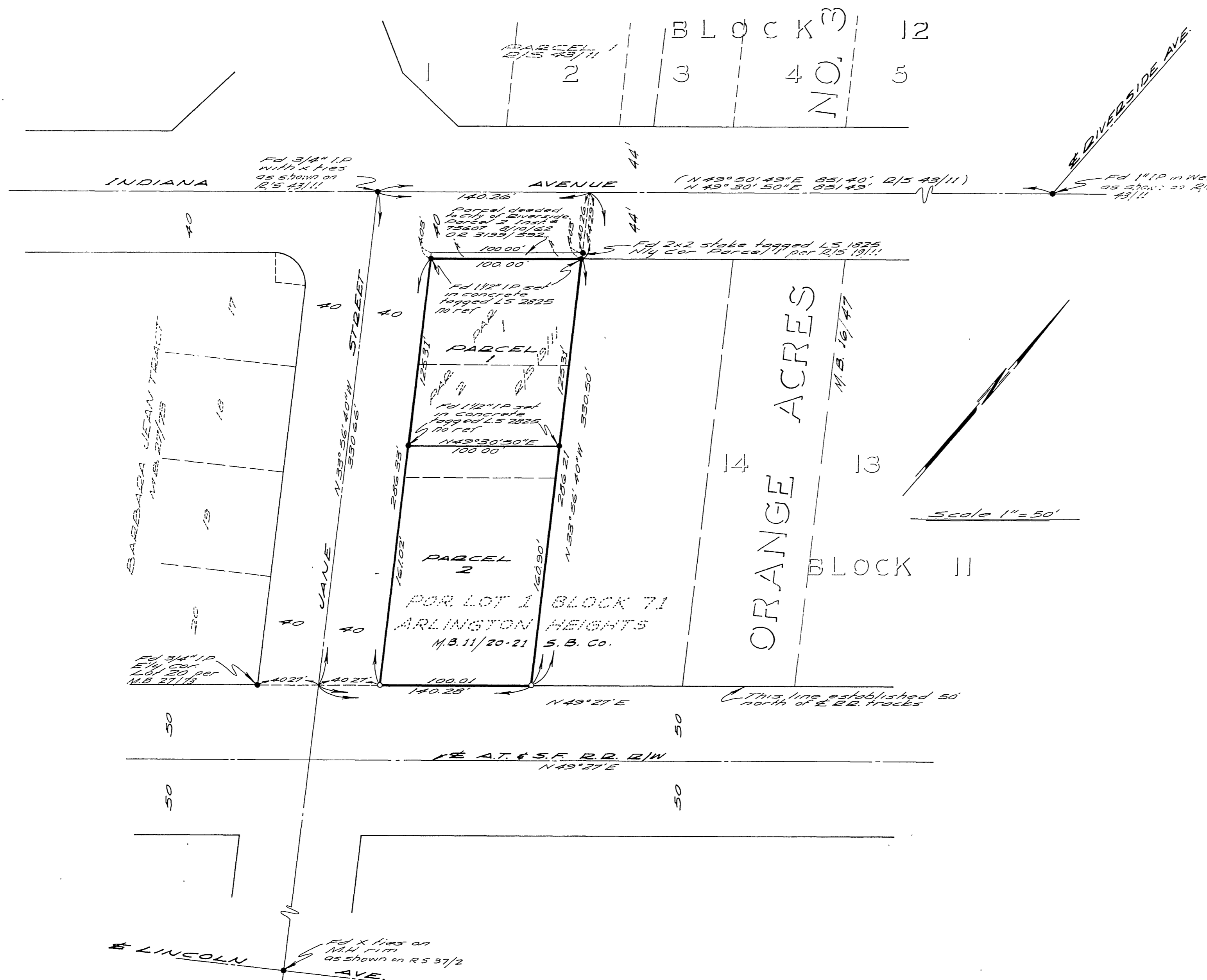
SCALE: 1" = 50'

AUGUST, 1968

RECORDER'S CERTIFICATE

Filed this 11 day of September 1968 at 10:30 A.M.
in Book 53 of Record of Surveys at page 10 at the
request of the County Surveyor
Fee \$ 5.00 W.D. BALOGH, County Recorder
No. 111 By Ernest A. Webb
Deputy

— BY —
ALBERT A. WEBB ASSOCIATES
CIVIL ENGINEERS
RIVERSIDE — CALIFORNIA



SURVEYOR'S CERTIFICATE

This map correctly represents a survey made by me or under my direction in conformance with the requirements of the Land Surveyors' Act at the request of Albert A. Webb in August, 1968.

Ernest A. Webb
R.C.E. No. 9876

SURVEYOR'S NOTES

1. Basis of Bearings is the centerline of Jane St. taken as N 53° 56' 40" W as shown on Barbara Jean Tract recorded in M.B. 27/73, Riverside Co. Records.
2. Found monuments as noted at all points shown thus •
3. Set 3/4" I.P. tagged D.E. 9876 at all points shown thus o unless otherwise noted.

COUNTY SURVEYOR'S CERTIFICATE

This map has been examined for conformance with the requirements of the Land Surveyors' Act this 10 day of September 1968.

A.C. KEITH, County Surveyor
By W. Keith
Deputy

R/S 5370