

16
R/S 53/16

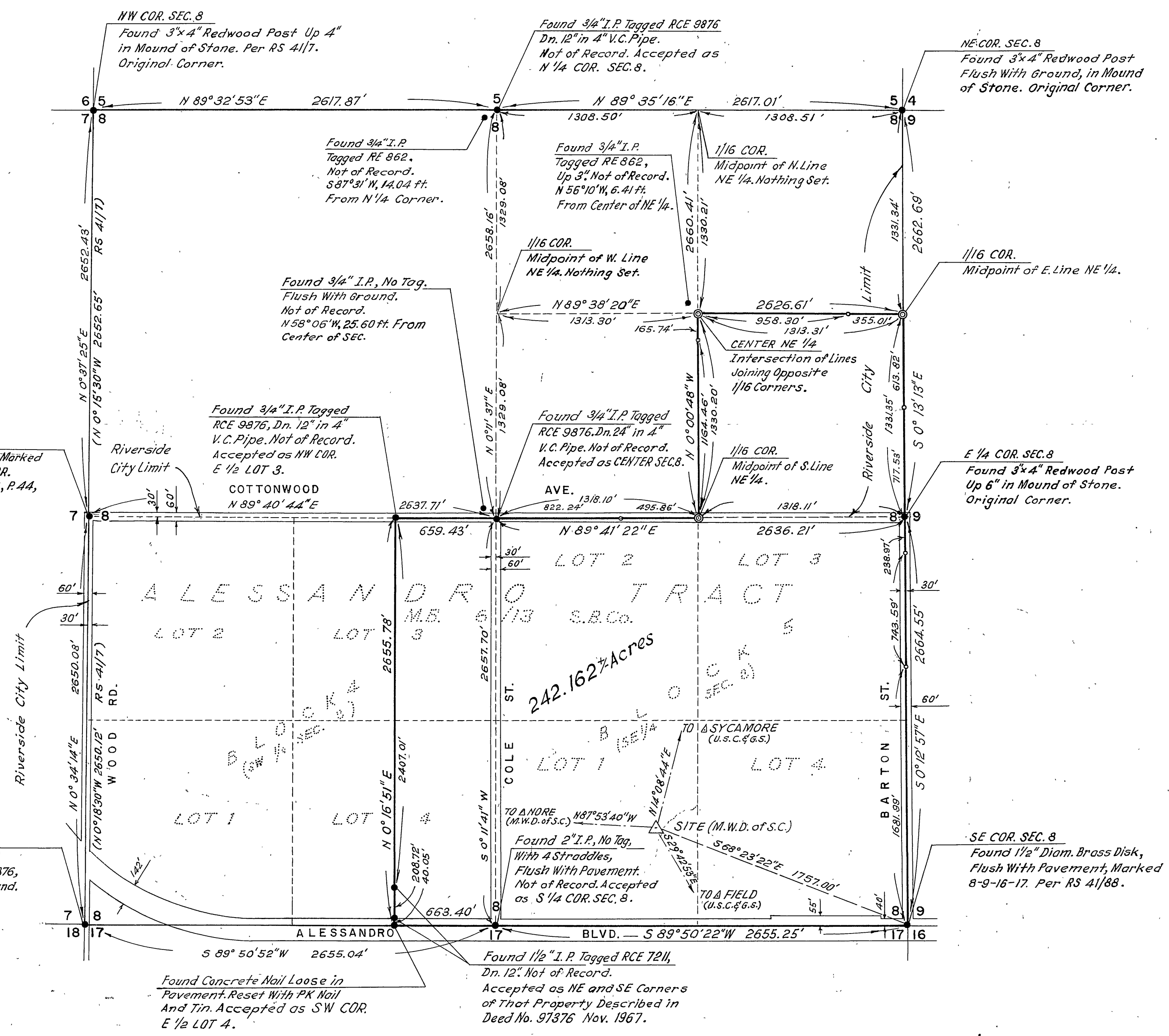
IN THE CITY AND COUNTY OF RIVERSIDE RECORD OF SURVEY

OF A PORTION OF SECTION 8, T.3S., R.4W. S.B.M.

September 1968 BRUCE JAY THOMPSON, Surveyor

RECORDER'S CERTIFICATE
Filed This 16 Day of October,
1968, At 10:00 A.M. in Book 53 of Record
of Surveys At Page 16, At The
Request of The County Surveyor
Fee NONE No. 00617
W.D. BALOGH County Recorder
By Bruce Jay Thompson Deputy

Scale: 1"=500'



SURVEYOR'S CERTIFICATE
This Map Correctly Represents a Survey Made by Me or Under My Direction in Conformance With The Requirements of The Land Surveyors Act at The Request of Metropolitan Water District of Southern Calif. in September, 1968.
Bruce Jay Thompson
L.S. No. 3483

- SURVEYOR'S NOTES**
- Bearings Shown Hereon Are Referred to California Coordinate System, Zone 6. Distances Are Ground Distances. Connections to U.S.C. & G.S. Triangulation Stations "FIELD" and "SYCAMORE" Are by Second-Order Trilateration to Station "SITE" (M.W.D. of S.C.) Shown Hereon, Thence by Traverse to The Several Corners of This Survey. Distances Were Measured With Electrotape, Model DM-20; Angles by Wild T-2 Theodolite.
 - Found Existing Monuments as Described at All Points Shown Thus: ●
 - Set 1" I.P. With Brass Disk, Flush, Stamped "1/16 M.W.D. PROP. COR. - L.S. 3483" at All Points Shown Thus: ⊙
 - Set 1" I.P. With Brass Disk, Flush, Stamped "M.W.D. PL." at All Points-on-Line Shown Thus: ○

COUNTY SURVEYOR'S CERTIFICATE
This Map Has Been Examined For Conformance With The Requirements of The Land Surveyors Act This 16 Day of October, 1968.
A.C. KEITH, County Surveyor
By J. M. White Deputy

R/S 53/16