

53/ 22
R/S 53/22

IN THE COUNTY OF RIVERSIDE

RECORD OF SURVEY

OF A PORTION OF THE NW 1/4 OF SECTION 10, T35, R4W
S.B.B. & M.

SCALE: 1" = 400'

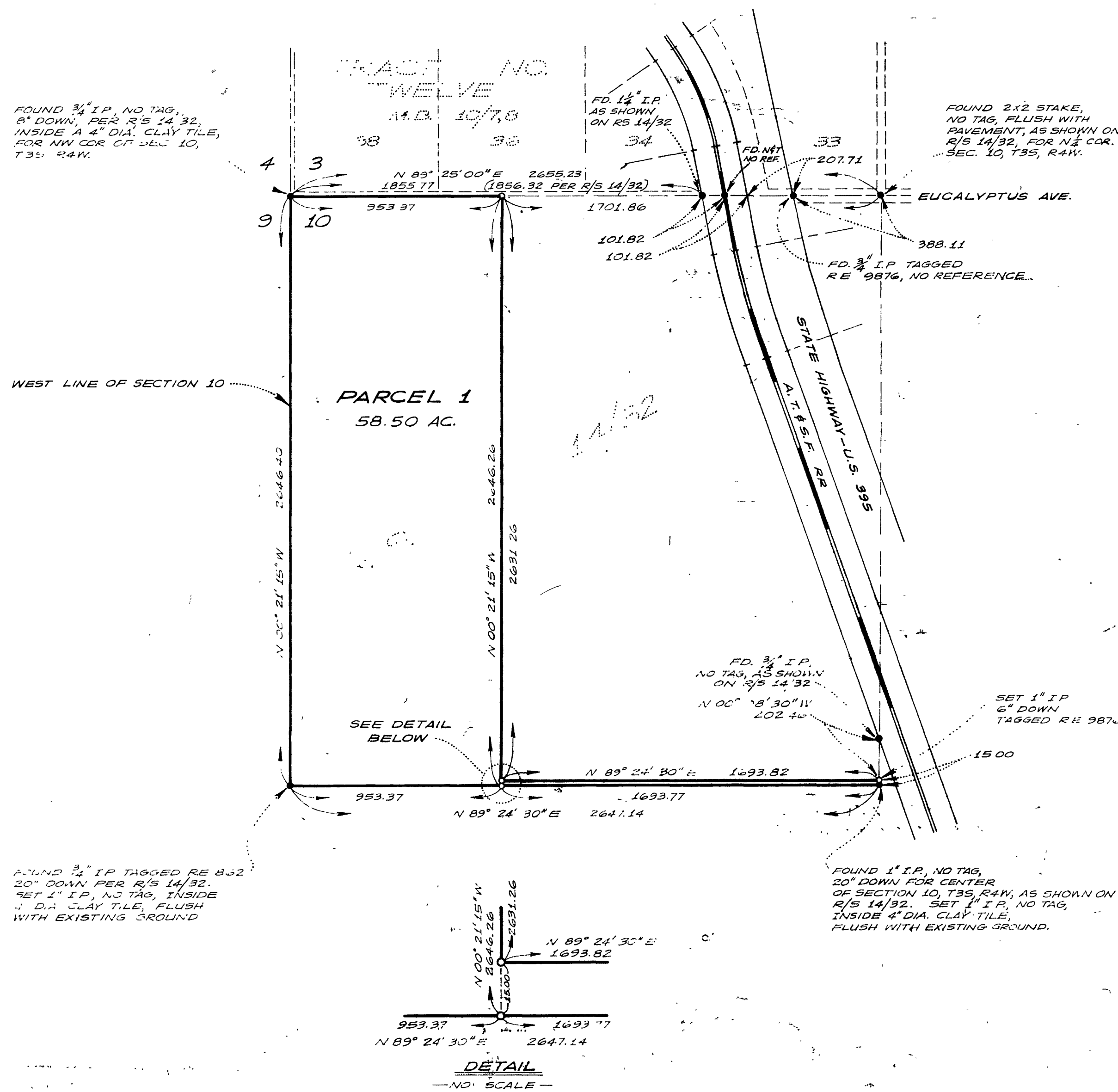
SEPTEMBER 1968

RECORDER'S CERTIFICATE

Filed this 22 day of October 1968 at 2:40 P.M.
in Book 53 of Record of Surveys at page 22 at the
request of the County Surveyor
Fee None W.D. Balogh County Recorder
No. 103-06 By Lawrence B. Vanflin
Deputy

— BY —

ALBERT A WEBB ASSOCIATES
CIVIL ENGINEERS
RIVERSIDE — CALIFORNIA



SURVEYOR'S CERTIFICATE

This map correctly represents a survey made by me or under my direction in conformance with the requirements of the Land Surveyors' Act at the request of Edgemont Community Services District in September, 1968

Albert N. Webb
R.C.E. No. 9876

SURVEYOR'S NOTES

1. Basis of bearings is the north line of the Northwest one-quarter of Section 10, T35, R4W, S.B.B. & M. taken as N 89° 25' 00" E as shown on R/S 14/32, Riverside Co. Records.
2. Found monuments as noted at all points shown thus ●
3. Set 1" I.P. tagged RE 9876 at all points shown thus ○ unless otherwise noted.

COUNTY SURVEYOR'S CERTIFICATE

This map has been examined for conformance with the requirements of the Land Surveyors' Act this 22 day of October 1968

A.C. Keith County Surveyor
By J. M. ... Deputy

R/S 53/22

53-53/22