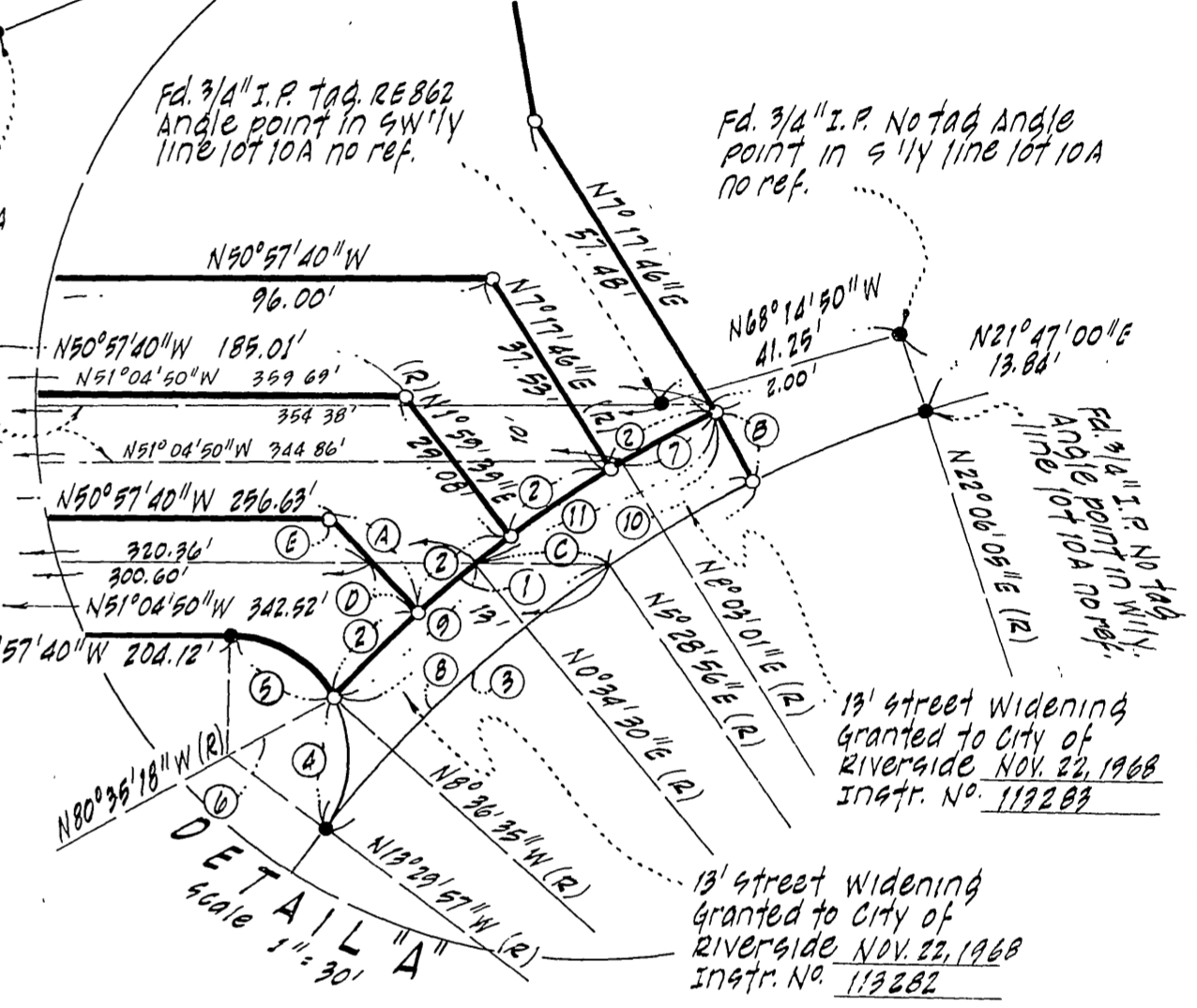
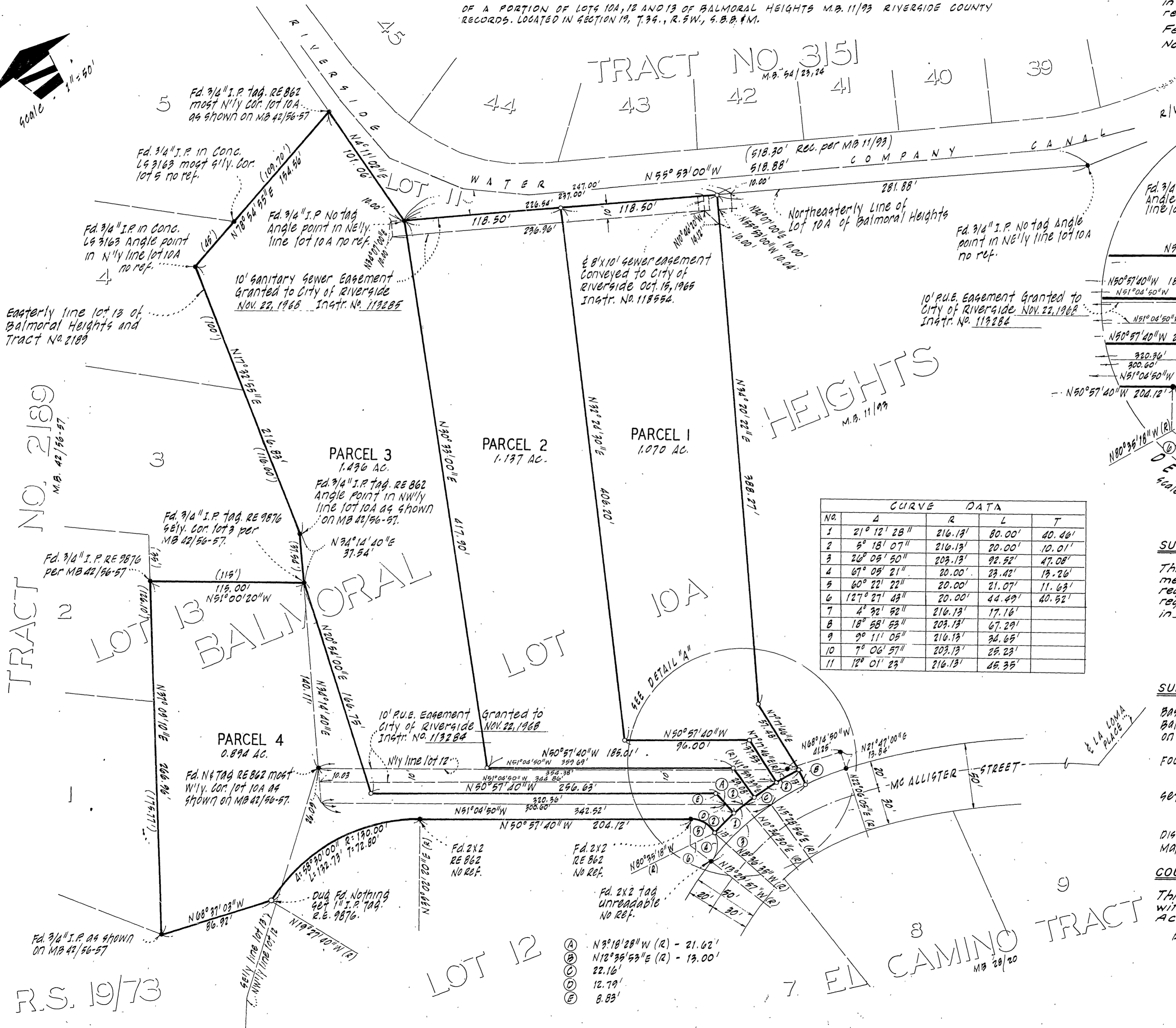


IN THE CITY OF RIVERSIDE RECORD OF SURVEY

OF A PORTION OF LOTS 10A, 12 AND 13 OF BALMORAL HEIGHTS M.B. 11/99 RIVERSIDE COUNTY RECORDS. LOCATED IN SECTION 19, T.34., R. 5W., S. 20. N.M.

RECORDER'S CERTIFICATE
 Filed this 2 day of December 1968 at 10:25 A.M.
 in Book 53 of Record of Surveys at page 35 at the request of the County Surveyor
 Fee \$ 5.00 W.D. Balogh County Recorder
 No. 116698 By Leon B. Vaughn Deputy

ALBERT A. WEBB ASSOCIATES
 Civil Engineers
 Riverside California
 June 1968



CURVE DATA				
NO.	Δ	R	L	T
1	21° 12' 28"	216.13'	80.00'	40.46'
2	5° 18' 07"	216.13'	20.00'	10.01'
3	20° 05' 50"	203.13'	92.52'	47.08'
4	67° 05' 21"	20.00'	23.42'	13.26'
5	60° 22' 22"	20.00'	21.07'	11.63'
6	127° 27' 43"	20.00'	44.49'	40.52'
7	4° 32' 52"	216.13'	17.16'	
8	18° 58' 53"	203.13'	67.29'	
9	9° 11' 05"	216.13'	34.65'	
10	7° 06' 57"	203.13'	25.23'	
11	12° 01' 23"	216.13'	45.35'	

SURVEYOR'S CERTIFICATE
 This map correctly represents a survey made by me or under my direction in conformance with the requirements of the Land Surveyors' Act at the request of R.A. Yeager
 in May, 1968
Emmet H. Webb
 R.C.E. No. 9876

SURVEYOR'S NOTES
 Basis of Bearing is the Northeastly line of Lot 10-A of Balmoral Heights, taken as N55°53'00"W as shown by Map on file in Map Book 11, Page 93 Riverside County Records.
 Found Monuments as noted at all points shown thus ●
 Set 1" I.P. tagged R.E. 9876 at all points shown thus ○
 Distances shown thus (100') are record distances per Map Book 42 Page 56-57 Riv. Co. Records.

COUNTY SURVEYOR'S CERTIFICATE
 This map has been examined for conformance with the requirements of the Land Surveyors' Act this 2 day of December 1968
 A.C. Keith - County Surveyor
 By J. Mable Deputy

TRACT NO. 2189
 M.B. 42/56-57

TRACT 2
 LOT 13

R.S. 19/73