

IN THE CITY OF RIVERSIDE

RECORD OF SURVEY

OF A PORTION OF LOTS 4, 5 AND 12, BLOCK 39, OF THE R. L. & I. CO. PER MAP BOOK I PAGE 70, RECORDS OF SAN BERNARDINO COUNTY, CALIFORNIA. LOCATED IN T.3S., R.6W., RANCHO EL SOBRANTE DE SAN JACINTO.

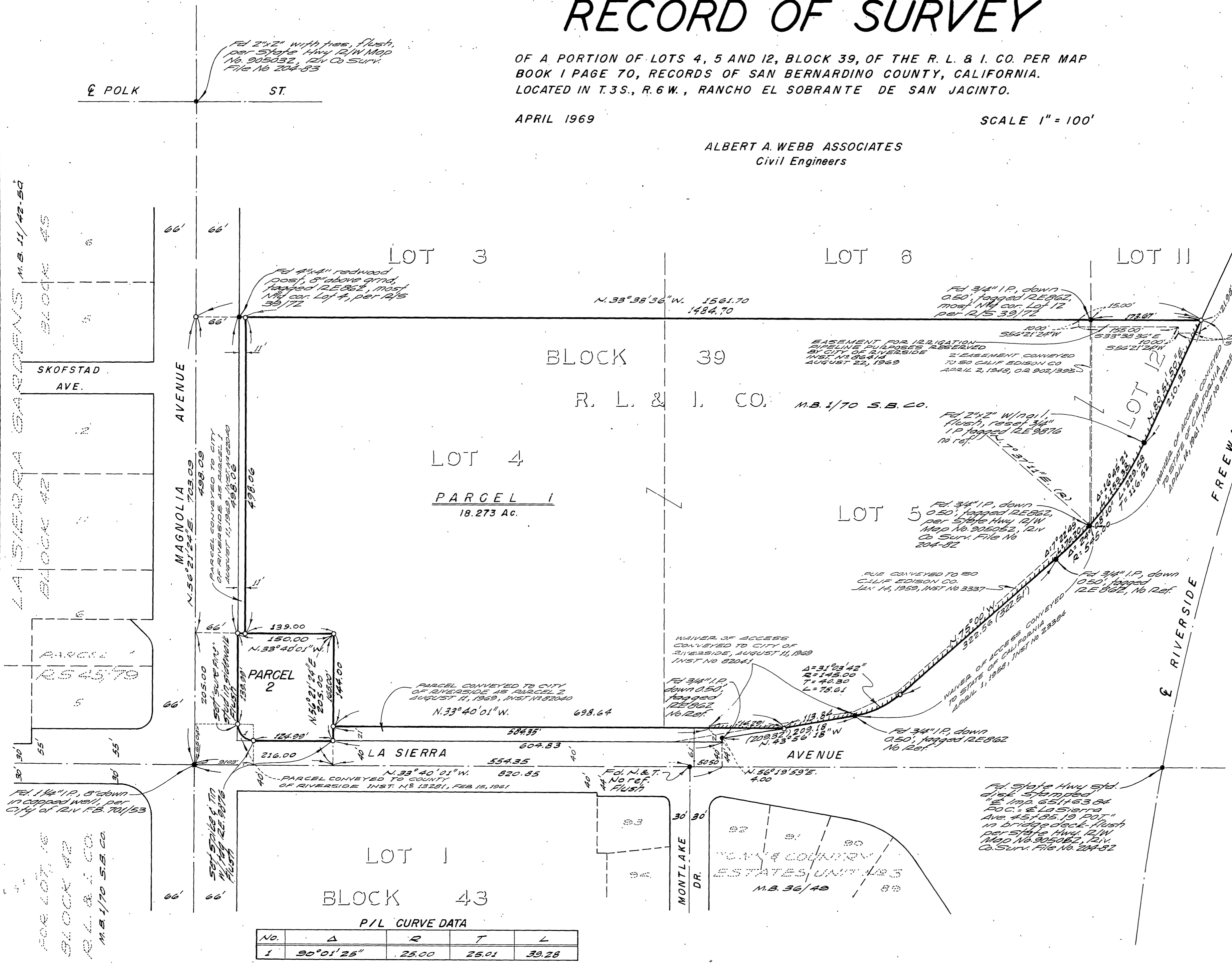
APRIL 1969

SCALE 1" = 100'

ALBERT A. WEBB ASSOCIATES
Civil Engineers

RECORDER'S CERTIFICATE

Filed this 16 day of Oct 1969 at 2:00 P.M.
in Book 54 of Record of Surveys at page 62 at the
request of the County Surveyor
Fee \$ 5.00 W. D. BALOGH, County Recorder
No. 305431 By Ernest H. Webb
DEPUTY



SURVEYOR'S CERTIFICATE

This map correctly represents a survey made by me or under my direction in conformance with the requirements of the Land Surveyors' Act at the request of LENRICH ASSOCIATES in April, 1969.

Ernest H. Webb
R. C. E. No. 9876

SURVEYOR'S NOTES

Basis of Bearings is the centerline of La Sierra Ave. taken as N.33°40'01"W. as shown on State Highway R/W Map No. 905052, Riverside County Surveyor File No. 204-82.

Found monuments as noted at all points shown thus ●

Set 1" I.P. tagged R.E. 9876 at all points shown thus ○, flush with ground surface unless otherwise noted.

Distances shown thus () are record per State Hwy. R/W Map No. 905052, Riv. Co. Surv. File No. 204-82.

COUNTY SURVEYOR'S CERTIFICATE

This map has been examined for conformance with the requirements of the Land Surveyors' Act this 16 day of October 1969.

A. G. KEITH, County Surveyor

By A. C. Keith