

IN THE CITY OF RIVERSIDE

# RECORD OF SURVEY

OF A PORTION OF THE WEST 1/2 OF THE N.W. 1/4 OF SECTION 21, T. 2 S., R. 4 W., S.B.B. & M.

MAY 1970

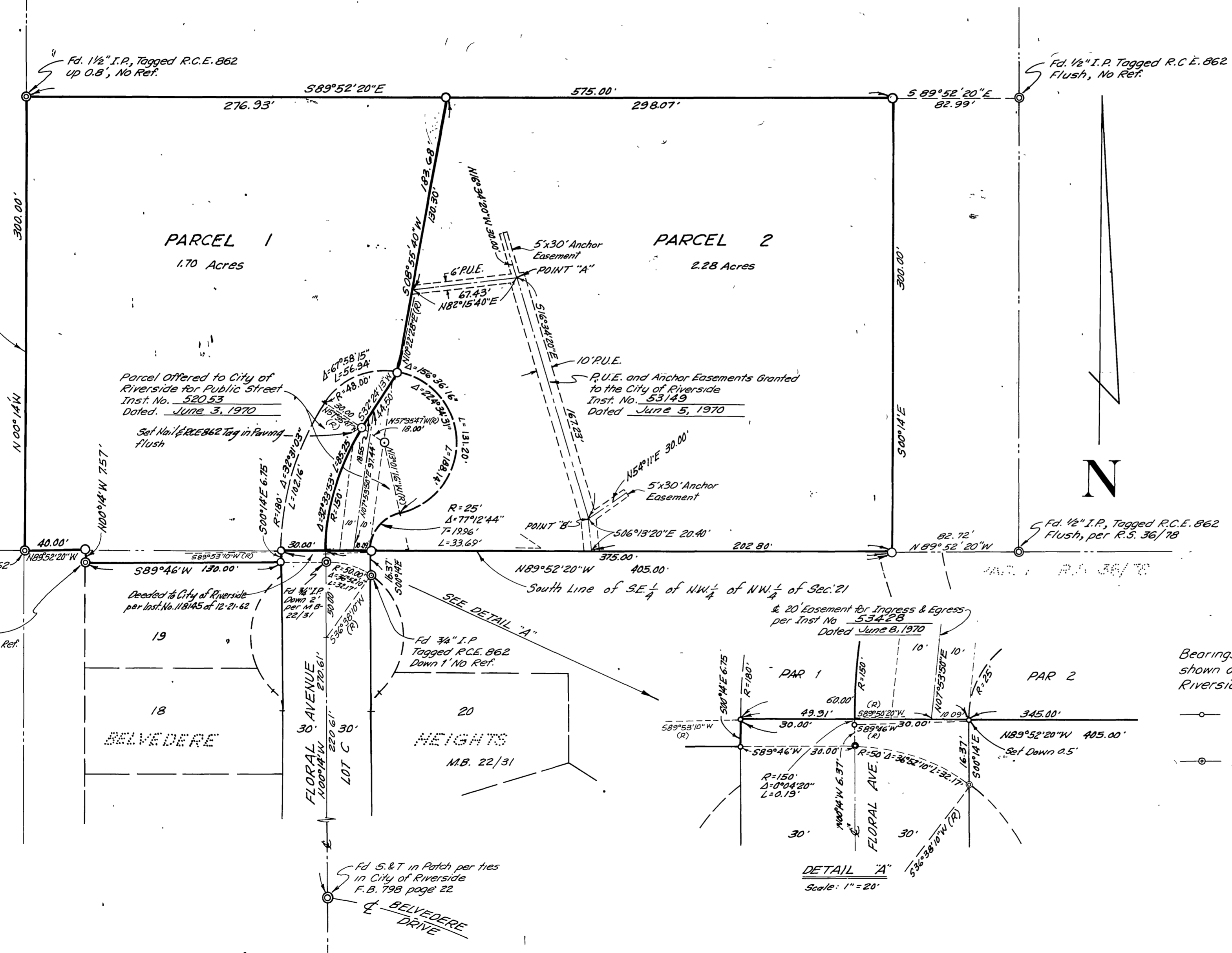
SCALE 1"=50'

J.F. DAVIDSON ASSOCIATES

### RECORDER'S CERTIFICATE

Filed this 17 day of June, 1970 at 4:00 P.M. in Book 55 of Record of Surveys at page 81 at the request of the County Surveyor.

Fee \$5.00 W.D. BALOGH County Recorder  
No. 57706 By Dean B. Vaughn Deputy



### SURVEYOR'S CERTIFICATE

This map correctly represents a survey made by me or under my direction in conformance with the requirements of the Land Surveyors' Act at the request of CLARE TABER in May, 1970

Robert S. Kipper  
R.C.E. 13699

### SURVEYOR'S NOTE

Bearings are based on centerline of Floral Avenue as being N00°14'W as shown on map of BELVEDERE HEIGHTS, M.B. 22/31, Records of Riverside County, California.

- Indicates set 3/4" I.P., tagged R.C.E. 862, flush, unless otherwise noted.
- Indicates found monuments as noted.

### COUNTY SURVEYOR'S CERTIFICATE

This map has been examined for conformance with the requirements of the Land Surveyors' Act this 16 day of June, 1970

A.C. KEITH County Surveyor  
By J. Maith Deputy