

IN THE CITY OF RIVERSIDE  
RIVERSIDE COUNTY, CALIFORNIA

# RECORD OF SURVEY

OF LOT 14 OF RIO VERDE TERRACE AS SHOWN BY MAP BOOK 31, PAGES 16-17,  
RIVERSIDE COUNTY RECORDS

BEELER, KRIEGER, & STEWART

JUNE 1974

### RECORDER'S CERTIFICATE

FILED THIS 9 DAY OF July 1974  
AT 3:00 PM IN BOOK 60 OF RECORDS OF THE COUNTY SURVEYOR  
IN THE COUNTY SURVEYOR'S OFFICE  
BY Richard C. Beale  
DEPUTY

### SURVEYOR'S CERTIFICATE

THIS MAP CORRECTLY REPRESENTS A SURVEY MADE BY ME OR UNDER MY DIRECTION IN CONFORMANCE WITH THE REQUIREMENTS OF THE LAND SURVEYOR'S ACT AT THE REQUEST OF ROBERT A. KRIEGER, IN MAY 1974.

Joseph N. Beeler  
JOSEPH N. BEELER LS 4055

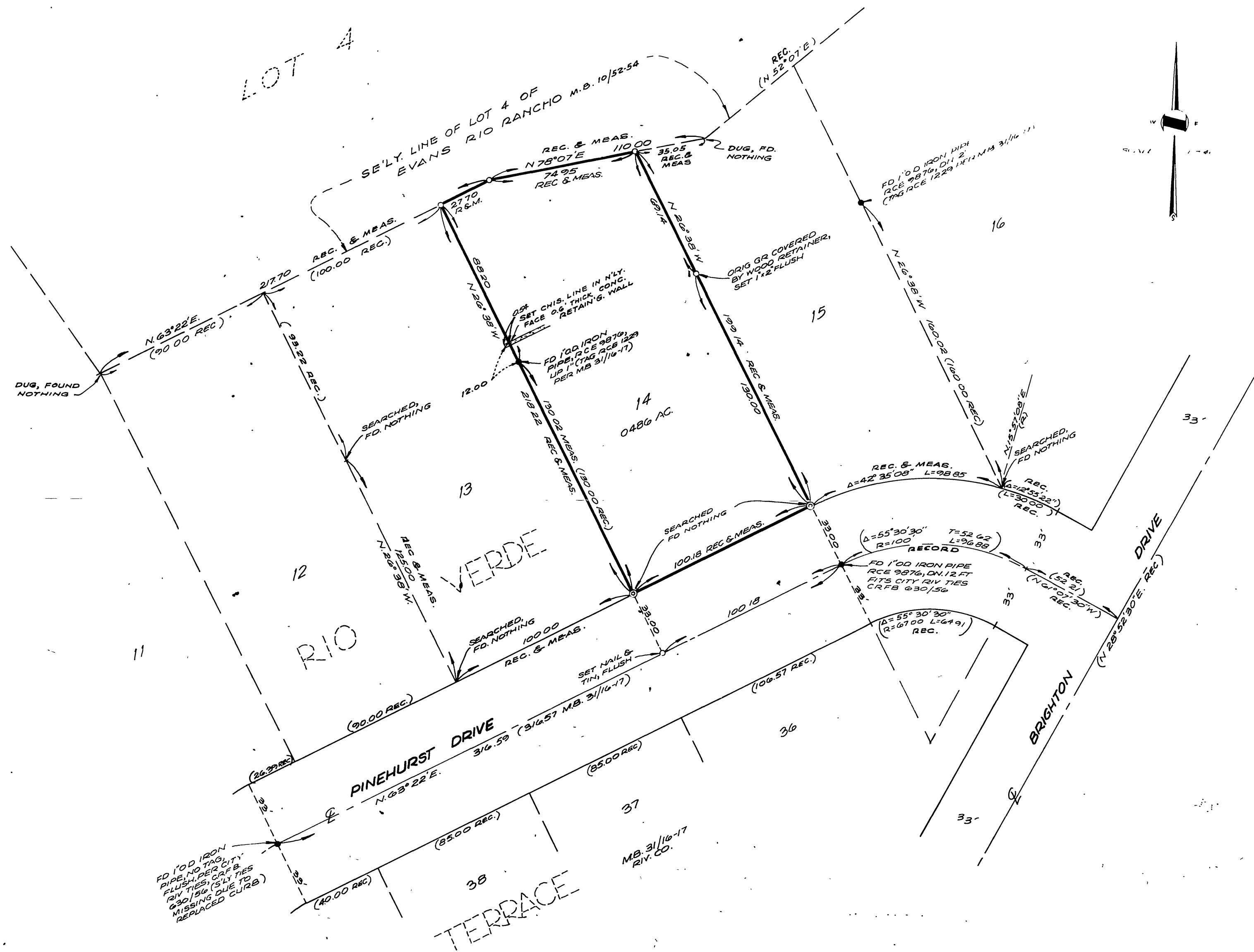
### SURVEYOR'S NOTES

- 1 BASIS OF BEARINGS IS THE E OF PINEHURST DRIVE TAKEN AS N 63° 22' E PER M.B. 31/16-17, RIVERSIDE COUNTY RECORDS.
- 2 FOUND MONUMENTS AS NOTED AT ALL POINTS SHOWN THUS ●.
- 3 SET 1" O.D. IRON PIPE TAGGED LS 4055, FLUSH, AT ALL POINTS SHOWN THUS ○, UNLESS OTHERWISE NOTED.
- 4 SET 1 1/2" O.D. IRON PIPE TAGGED LS 4055, FLUSH, AT ALL POINTS SHOWN THUS ⊙.

### COUNTY SURVEYOR'S CERTIFICATE

THIS MAP HAS BEEN EXAMINED FOR CONFORMANCE WITH THE REQUIREMENTS OF THE LAND SURVEYOR'S ACT THIS 9 DAY OF July, 1974.

B. DOUGLAS POWELL  
COUNTY SURVEYOR  
BY Shelli  
DEPUTY



RS 60/19

RS 60/19

RS 60/19