

RECORD OF SURVEY

IN THE CITY OF RIVERSIDE
OF A PORTION OF LOTS 11-13 AND ALL OF LOTS 14-16 OF AN UN-NUMBERED
BLOCK OF RUBIDOUX HEIGHTS AS SHOWN BY MAP ON FILE IN BOOK 7 PAGE
30 OF MAPS, SAN BERNARDINO COUNTY RECORDS, IN THE RUBIDOUX RANCHO.

JULY, 1974

ERNEST PINTOR LAND SURVEYOR

SCALE: 1"=40'

RECORDER'S CERTIFICATE

FILED THIS 11 DAY OF February, 1975 AT 2:20 PM.
IN BOOK 60 OF RECORD OF SURVEYS AT PAGE 73
AT THE REQUEST OF THE COUNTY SURVEYOR
FEE \$5.00
NO 17110
W D BALOGH
COUNTY RECORDER
BY Harold C. Bode
DEPUTY

SURVEYOR'S CERTIFICATE

THIS MAP CORRECTLY REPRESENTS A SURVEY MADE
BY ME OR UNDER MY DIRECTION IN CONFORMANCE
WITH THE REQUIREMENTS OF THE LAND SURVEYORS
ACT AT THE REQUEST OF BILL DEANE IN JULY, 1974

Ernest Pintor
ERNEST PINTOR L.S. 3259

COUNTY SURVEYOR'S CERTIFICATE

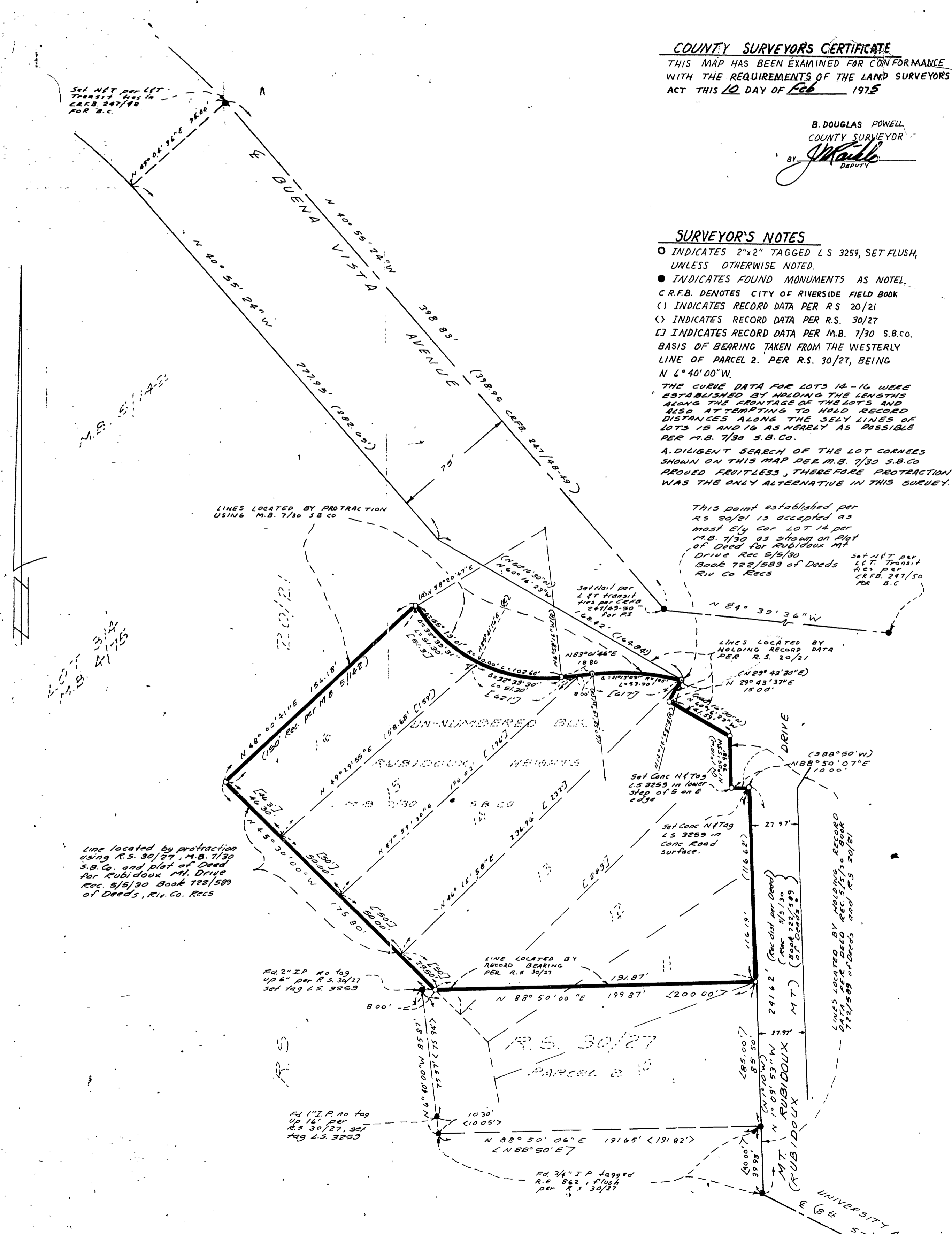
THIS MAP HAS BEEN EXAMINED FOR CONFORMANCE
WITH THE REQUIREMENTS OF THE LAND SURVEYORS
ACT THIS 10 DAY OF Feb 1975

B. DOUGLAS POWELL
COUNTY SURVEYOR

BY Shaul
DEPUTY

SURVEYOR'S NOTES

- INDICATES 2"x2" TAGGED L.S. 3259, SET FLUSH, UNLESS OTHERWISE NOTED.
 - INDICATES FOUND MONUMENTS AS NOTED.
 - C.R.F.B. DENOTES CITY OF RIVERSIDE FIELD BOOK
 - () INDICATES RECORD DATA PER R.S. 20/21
 - < > INDICATES RECORD DATA PER R.S. 30/27
 - [] INDICATES RECORD DATA PER M.B. 7/30 S.B.CO.
- BASIS OF BEARING TAKEN FROM THE WESTERLY LINE OF PARCEL 2. PER R.S. 30/27, BEING N 6° 40' 00" W.
- THE CURVE DATA FOR LOTS 14-16 WERE ESTABLISHED BY HOLDING THE LENGTHS ALONG THE FRONTAGE OF THE LOTS AND ALSO ATTEMPTING TO HOLD RECORD DISTANCES ALONG THE SELLY LINES OF LOTS 15 AND 16 AS NEARLY AS POSSIBLE PER M.B. 7/30 S.B.CO.
- A DILIGENT SEARCH OF THE LOT CORNEES SHOWN ON THIS MAP PER M.B. 7/30 S.B.CO. PROVED FRUITLESS, THEREFORE PROTECTION WAS THE ONLY ALTERNATIVE IN THIS SURVEY.



FS 60/73