

# IN THE CITY OF RIVERSIDE RECORD OF SURVEY

OF A PORTION OF THE N.W. 1/4 OF THE S.E. 1/4 OF  
THE S.E. 1/4 OF SEC. 14, T. 35, R. 5 W., S. B. M.  
JANUARY, 1975 SCALE: 1"=60'  
ERNEST PINTOR LAND SURVEYOR

### RECORDER'S CERTIFICATE

FILED THIS 24 DAY OF MARCH 1975 AT 3:40 P.M.  
IN BOOK 60 OF RECORD OF SURVEYS AT PAGE 88  
AT THE REQUEST OF THE COUNTY SURVEYOR  
FEE \$ 5.50  
NO. 33581

W. D. BALOGH  
COUNTY RECORDER  
BY Caron B. Vaughn  
DEPUTY

### SURVEYOR'S CERTIFICATE

THIS MAP CORRECTLY REPRESENTS A SURVEY  
MADE BY ME OR UNDER MY DIRECTION IN  
CONFORMANCE WITH THE REQUIREMENTS OF  
THE LAND SURVEYOR'S ACT AT THE REQUEST OF  
GLADYS H. COOK IN JANUARY, 1975.

Ernest Pintor  
ERNEST PINTOR L.S. 3259

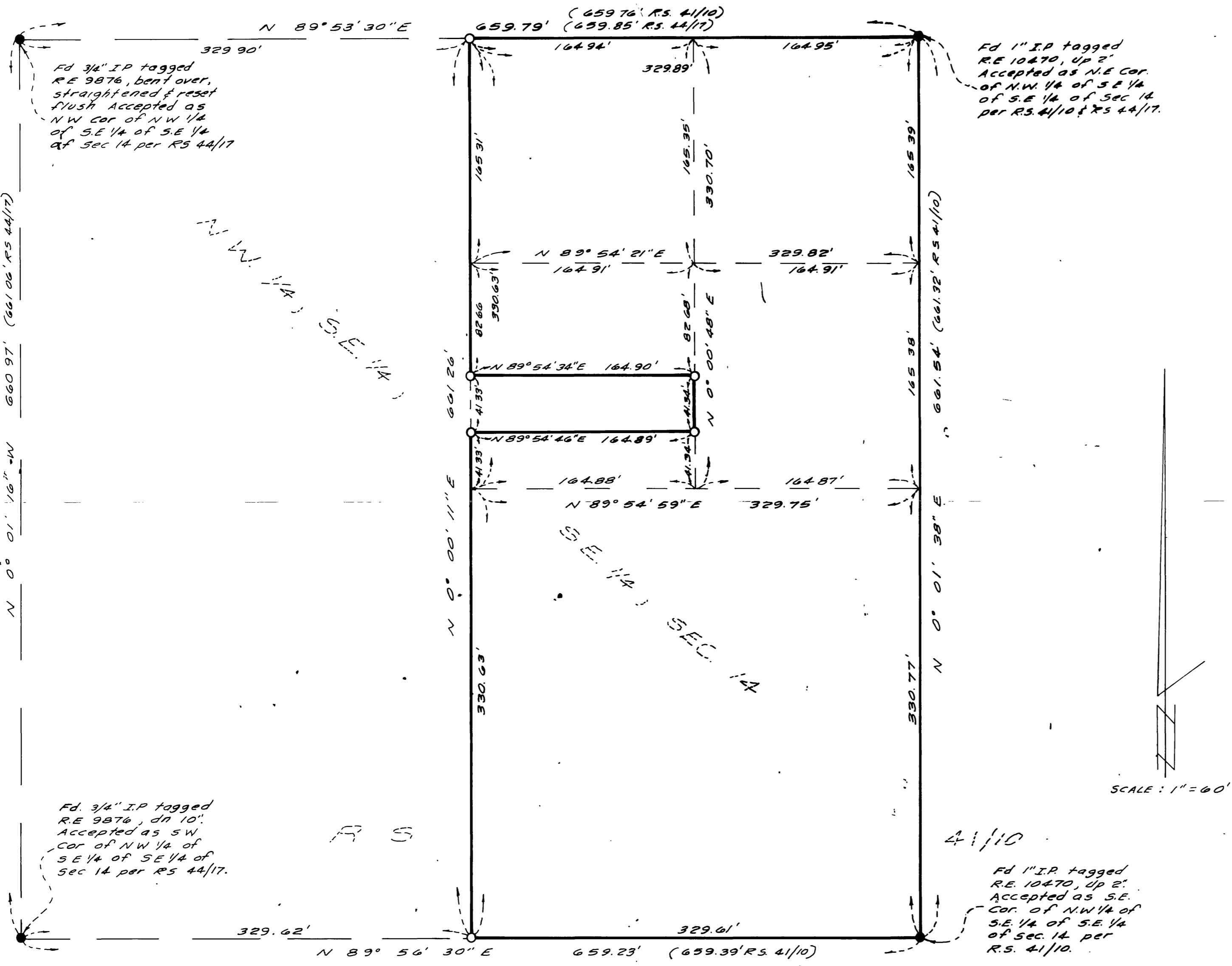
### COUNTY SURVEYOR'S CERTIFICATE

THIS MAP HAS BEEN EXAMINED FOR CONFORMANCE  
WITH THE REQUIREMENTS OF THE LAND SURVEYOR'S  
ACT THIS 24 DAY OF MARCH 1975.

B. DOUGLAS POWELL  
COUNTY SURVEYOR  
BY W. M. Smith  
DEPUTY

### SURVEYOR'S NOTES

○ INDICATES 1" I.P. TAGGED L.S. 3259, SET UP 2".  
● INDICATES FOUND MONUMENTS AS NOTED.  
BASIS OF BEARING TAKEN FROM THE NORTH  
LINE OF N.W. 1/4, S.E. 1/4, S.E. 1/4 OF SECTION 14,  
BEING N 89° 53' 30" E PER R.S. 44/17.



Fd 3/4" I.P. tagged  
R.E. 9876, bent over,  
straightened & reset  
flush. Accepted as  
NW cor. of NW 1/4  
of S.E. 1/4 of S.E. 1/4  
of Sec 14 per R.S. 44/17

Fd 1" I.P. tagged  
R.E. 10470, up 2"  
Accepted as N.E. cor.  
of NW 1/4 of S.E. 1/4  
of S.E. 1/4 of Sec 14  
per R.S. 44/10 & R.S. 44/17.

Fd 3/4" I.P. tagged  
R.E. 9876, dn 10".  
Accepted as SW  
cor. of NW 1/4 of  
S.E. 1/4 of S.E. 1/4 of  
Sec 14 per R.S. 44/17.

Fd 1" I.P. tagged  
R.E. 10470, up 2".  
Accepted as S.E.  
cor. of NW 1/4 of  
S.E. 1/4 of S.E. 1/4  
of Sec 14 per  
R.S. 41/10.

SCALE: 1"=60'

RS 60/88

RS 60/88

RS 60/88