

CITY AND COUNTY OF RIVERSIDE, CALIFORNIA  
**RECORD OF SURVEY**  
OF PORTIONS OF SECTIONS 3, 4 AND 9, T3S, R4W, S.B.M.

APRIL 1976 BRUCE E. WILT, L. S. 3708

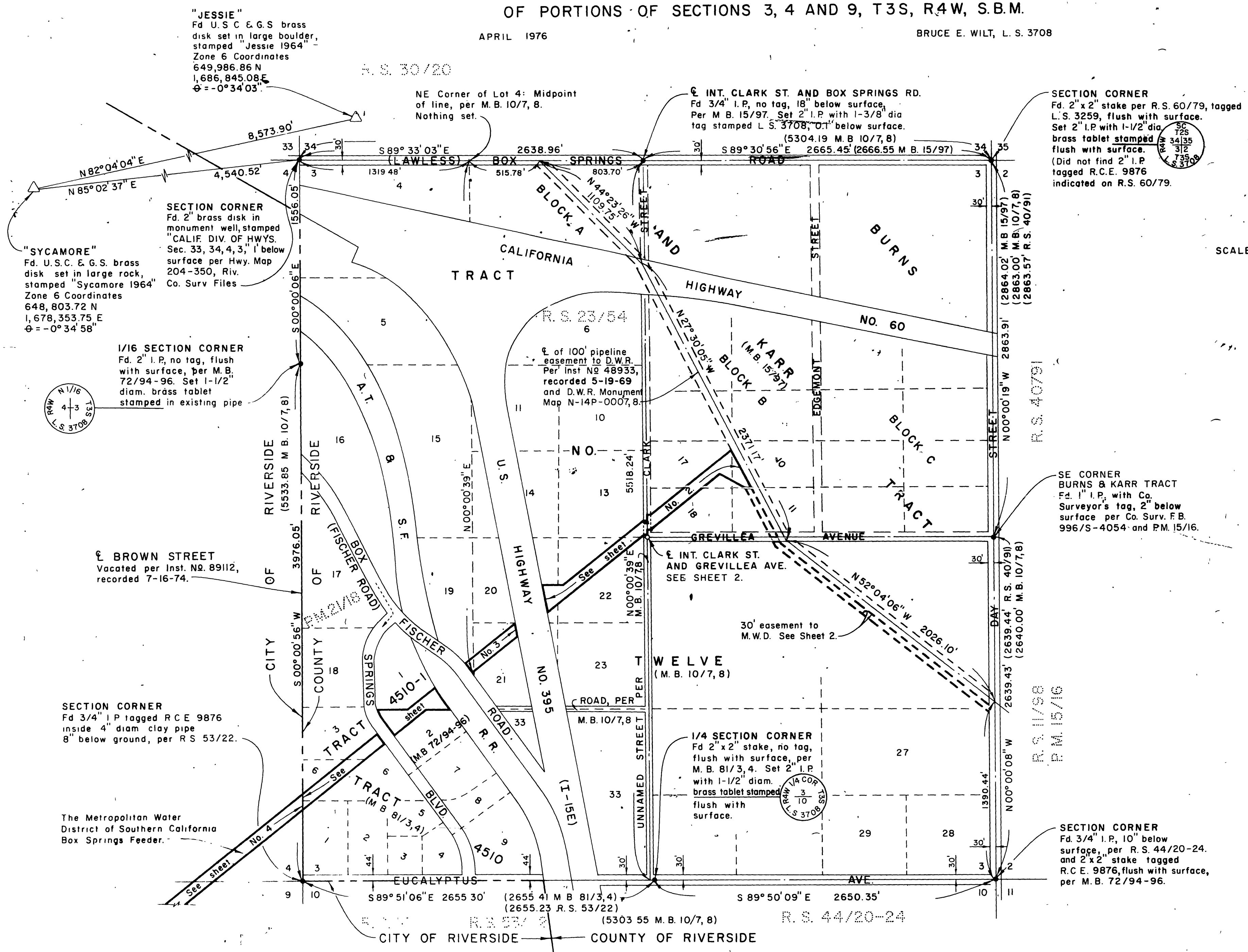
**RECORDER'S CERTIFICATE**  
Filed this 19 day of January, 1977, at 1:00 P.M. in book 62 of Record of Surveys at pages 53-56 At the request of the County Surveyor Fee None No. 9830 W.D. BALOGH, COUNTY RECORDER  
BY: *Harold C. Bada*, DEPUTY

**SURVEYOR'S CERTIFICATE**  
This map correctly represents a survey made by me or under my direction in conformance with the requirements of The Land Surveyor's Act at the request of The Metropolitan Water District of Southern California, owner of the land shown hereon, on April 19, 1976.  
BRUCE E. WILT, L. S. 3708  
SCALE: 1" = 500'

**COUNTY SURVEYOR'S CERTIFICATE**  
This map has been examined for conformance with the requirements of The Land Surveyor's Act this 17 day of January, 1977.  
B. DOUGLAS BOWELL, COUNTY SURVEYOR  
BY: *J. M. Raulo*, DEPUTY

**SURVEYOR'S NOTES**

- The basis of bearings for this survey is the California Coordinate System, Zone 6, determined locally by the line between U.S.C. & G.S. stations "JESSIE" and "SYCAMORE" as shown hereon.
- Distances shown hereon are ground distances. Grid distances may be obtained by multiplying ground distance by 0.9999368, (Elev. = 1380; Lat. = 33°54').
- Found points, as described, are indicated by closed circles: ●
- Points set during this survey are 2" I.P. with brass disk stamped "L.S. 3708 M.W.D." set flush with surface, unless otherwise noted, and are shown hereon by open circles: ○
- Abbreviations used are as follows:  
M.W.D. = The Metropolitan Water District of Southern California.  
D.W.R. = California Department of Water Resources.



R.S. 62/53

R.S. 62/53

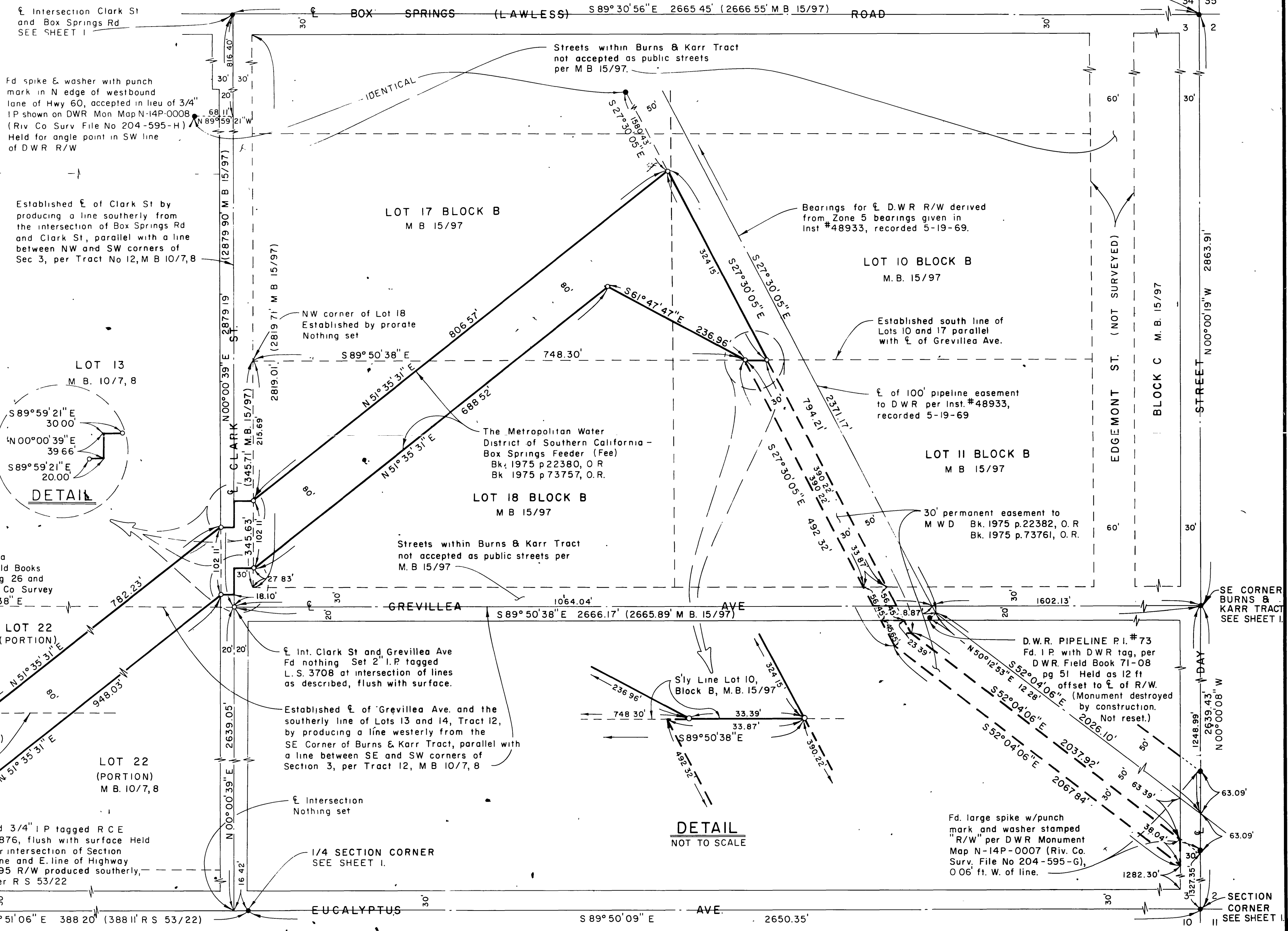
CITY AND COUNTY OF RIVERSIDE, CALIFORNIA

# RECORD OF SURVEY

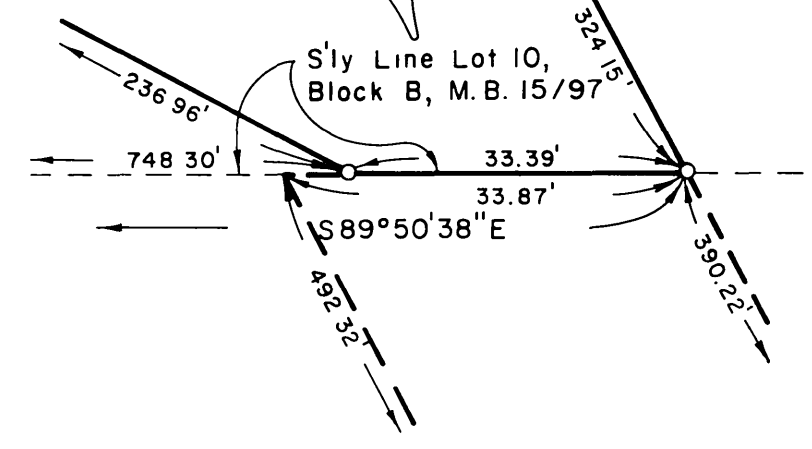
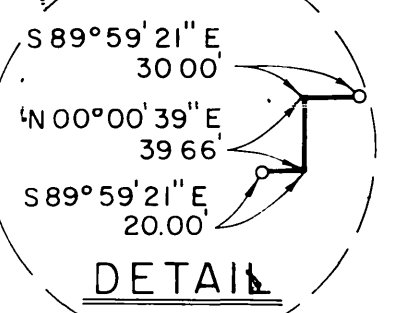
APRIL 1976

BRUCE E WILT, L S. 3708

SECTION CORNER  
SEE SHEET 1



SCALE 1" = 100'



R.S. 62/54

2 RS 62/54

# CITY AND COUNTY OF RIVERSIDE, CALIFORNIA RECORD OF SURVEY

APRIL 1976

BRUCE E. WILT, L. S. 3708

R. S. 62/55

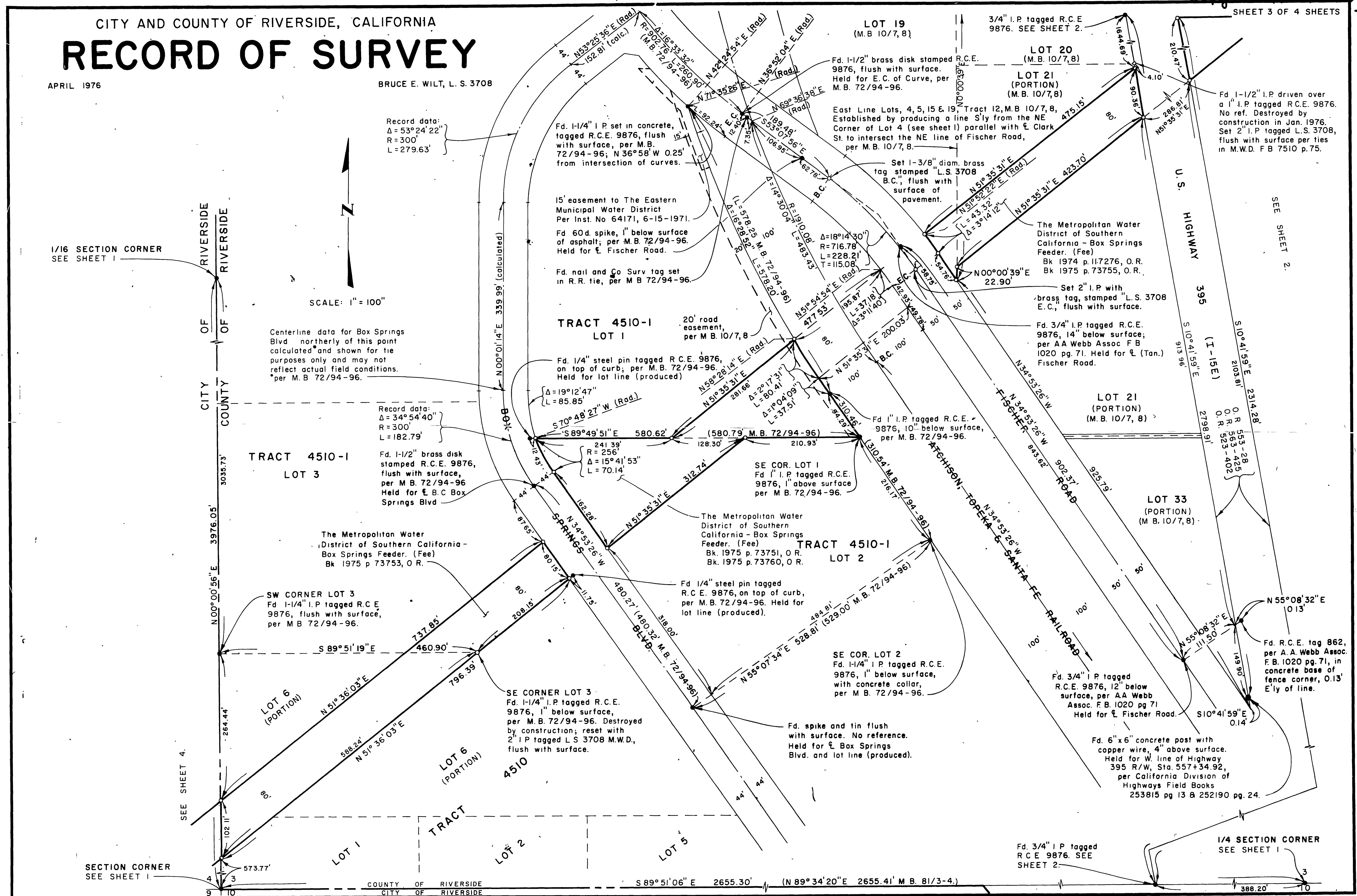
Record data:  
 $\Delta = 53^\circ 24' 22''$   
 $R = 300'$   
 $L = 279.63'$

SCALE: 1" = 100'

Centerline data for Box Springs Blvd northerly of this point calculated and shown for tie purposes only and may not reflect actual field conditions.  
\*per M.B. 72/94-96.

Record data:  
 $\Delta = 34^\circ 54' 40''$   
 $R = 300'$   
 $L = 182.79'$

R. S. 62/55



1/16 SECTION CORNER  
SEE SHEET 1

RIVERSIDE  
OF  
CITY  
COUNTY  
RIVERSIDE

SEE SHEET 4.

SECTION CORNER  
SEE SHEET 1

CITY OF RIVERSIDE  
COUNTY OF RIVERSIDE

S 89° 51' 06" E 2655.30' (N 89° 34' 20" E 2655.41' M.B. 81/3-4.)

1/4 SECTION CORNER  
SEE SHEET 1

2 RS 62/55

CITY AND COUNTY OF RIVERSIDE, CALIFORNIA  
**RECORD OF SURVEY**

APRIL, 1976

BRUCE E. WILT, L S 3708

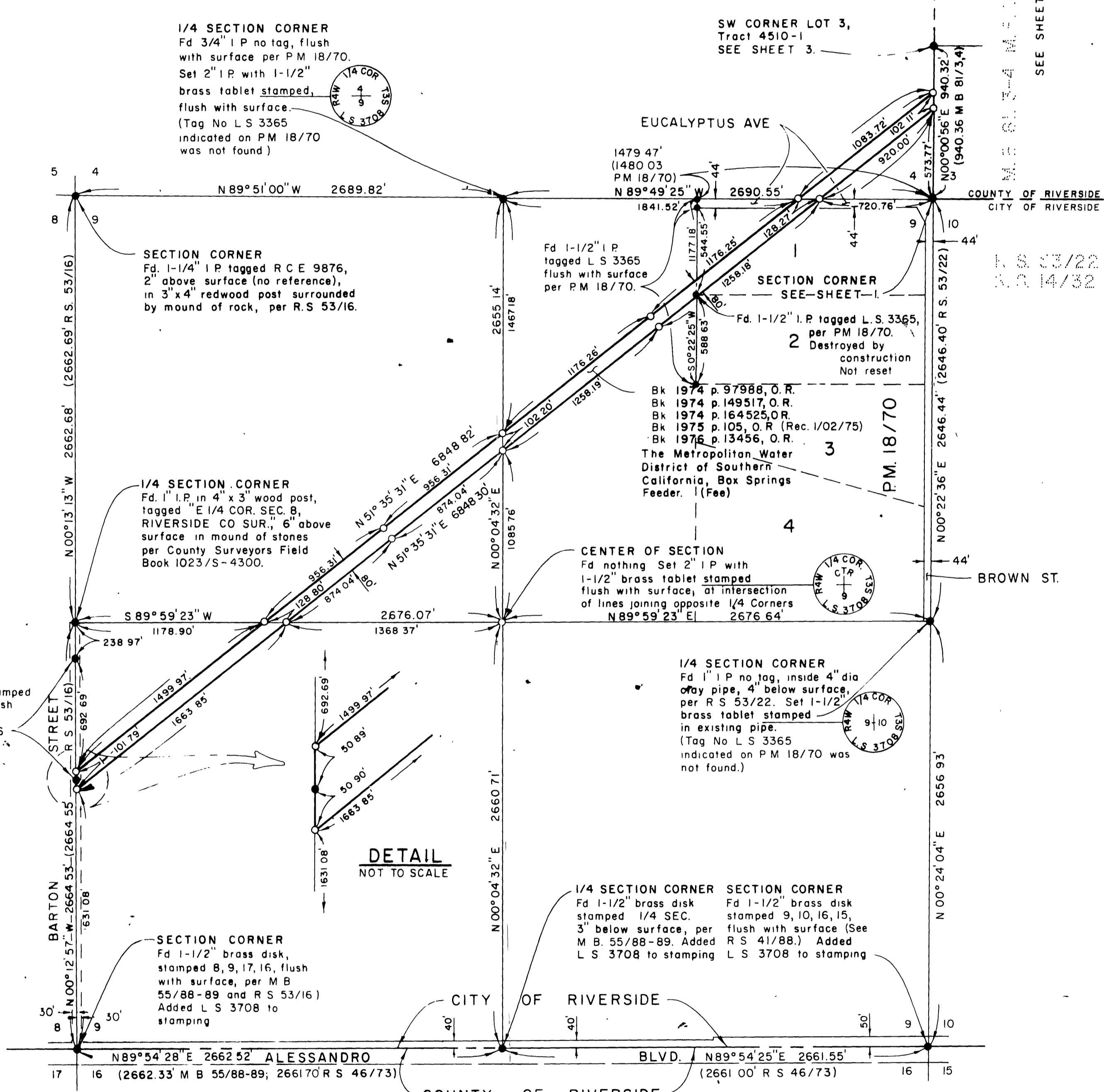
SHEET 4 OF 4 SHEETS

R.S. 62/56

Rs 62/56

Copy R/S 62/56

SCALE 1" = 500'



**1/4 SECTION CORNER**  
 Fd 3/4" I.P. no tag, flush with surface per P.M. 18/70.  
 Set 2" I.P. with 1-1/2" brass tablet stamped, flush with surface.  
 (Tag No L.S. 3365 indicated on P.M. 18/70 was not found)

**SW CORNER LOT 3, Tract 4510-1**  
 SEE SHEET 3.

**SECTION CORNER**  
 Fd. 1-1/4" I.P. tagged R.C.E. 9876, 2" above surface (no reference), in 3"x4" redwood post surrounded by mound of rock, per R.S. 53/16.

Fd. 1-1/2" I.P. tagged L.S. 3365 flush with surface per P.M. 18/70.

**SECTION CORNER**  
 SEE SHEET 1.  
 Fd. 1-1/2" I.P. tagged L.S. 3365, 2 per P.M. 18/70.  
 Destroyed by construction. Not reset.

Bk 1974 p. 97988, O.R.  
 Bk 1974 p. 149517, O.R.  
 Bk 1974 p. 164525, O.R.  
 Bk 1975 p. 105, O.R. (Rec. 1/02/75)  
 Bk 1976 p. 13456, O.R.  
 The Metropolitan Water District of Southern California, Box Springs Feeder. 1 (Fee)

**1/4 SECTION CORNER**  
 Fd. 1" I.P. in 4" x 3" wood post, tagged "E 1/4 COR. SEC. 8, RIVERSIDE CO SUR.", 6" above surface in mound of stones per County Surveyors Field Book 1023/S-4300.

**CENTER OF SECTION**  
 Fd. nothing Set 2" I.P. with 1-1/2" brass tablet stamped flush with surface, at intersection of lines joining opposite 1/4 Corners  
 N 89° 59' 23" E 2676.64'

Fd. 1" I.P. with brass disk stamped M.W.D. PL., flush with surface, per R.S. 53/16

**1/4 SECTION CORNER**  
 Fd. 1" I.P. no tag, inside 4" dia. clay pipe, 4" below surface, per R.S. 53/22. Set 1-1/2" brass tablet stamped in existing pipe.  
 (Tag No L.S. 3365 indicated on P.M. 18/70 was not found.)

**DETAIL**  
 NOT TO SCALE

**SECTION CORNER**  
 Fd. 1-1/2" brass disk, stamped 8, 9, 17, 16, flush with surface, per M.B. 55/88-89 and R.S. 53/16. Added L.S. 3708 to stamping

**1/4 SECTION CORNER** SECTION CORNER  
 Fd. 1-1/2" brass disk stamped 1/4 SEC. 3" below surface, per M.B. 55/88-89. Added R.S. 41/88. Added L.S. 3708 to stamping  
 Fd. 1-1/2" brass disk stamped 9, 10, 16, 15, flush with surface (See M.B. 55/88-89. Added R.S. 41/88.) Added L.S. 3708 to stamping

**BARTON STREET** N 00° 13' 13" W 2662.68' (2662.69' R.S. 53/16)  
**BROWN ST.** N 00° 24' 04" E 2656.93'  
**ALESSANDRO BLVD.** N 89° 54' 28" E 2662.52' (2662.33' M.B. 55/88-89; 2661.70' R.S. 46/73)  
**EUCALYPTUS AVE** N 89° 51' 00" W 2689.82'  
**SECTION CORNER** N 00° 04' 32" E 1085.76'  
**SECTION CORNER** N 00° 04' 32" E 2660.71'  
**SECTION CORNER** N 00° 22' 36" E 2646.44' (2646.40' R.S. 53/22)  
**SECTION CORNER** N 00° 00' 56" E 940.32' (940.36' M.B. 81/3,4)  
**SECTION CORNER** N 89° 59' 23" W 2676.64'  
**SECTION CORNER** N 89° 54' 25" E 2661.55' (2661.00' R.S. 46/73)

M.B. 55/88-89  
 M.B. 55/88-89

R.S. 41/88  
 R.S. 41/88

SEE SHEET 3.

R.S. 53/22  
 S.O. 14/32

R.S. 62/56