

IN THE COUNTY OF RIVERSIDE, CALIFORNIA

SHEET 1 OF 1

RECORD OF SURVEY

OF A PORTION OF BLOCK 6 OF MAP OF WEST RIVERSIDE,
MAP BOOK 9, PAGE 34, RECORDS OF SAN BERNARDINO
COUNTY, CA. LOCATED IN THE RUBIDOUX RANCHO IN THE
COUNTY OF RIVERSIDE, CA.

JULY 1982

RECORDERS CERTIFICATE

FILED THIS 12 DAY OF OCT, 1982
AT 11:00 AM IN BOOK 69 OF RECORD OF
SURVEYS AT PAGE 29 AT THE REQUEST OF
THE COUNTY SURVEYOR.

NO. 175846

FEE \$6.00

WILLIAM E CONERLY, COUNTY RECORDER

BY: Daniel M. Stager, DEPUTY

CONSULTING ENGINEERS
W.R. SHOWALTER & ASSOCIATES, INC.

SURVEYOR'S CERTIFICATE

THIS MAP CORRECTLY REPRESENTS A SURVEY MADE BY ME OR
UNDER MY DIRECTION IN CONFORMANCE WITH THE REQUIREMENTS
OF THE LAND SURVEYORS ACT AT THE REQUEST OF LAWRENCE
DENDY IN JULY, 1982.

William R Showalter
WILLIAM R SHOWALTER, LS 4242

COUNTY SURVEYOR'S CERTIFICATE

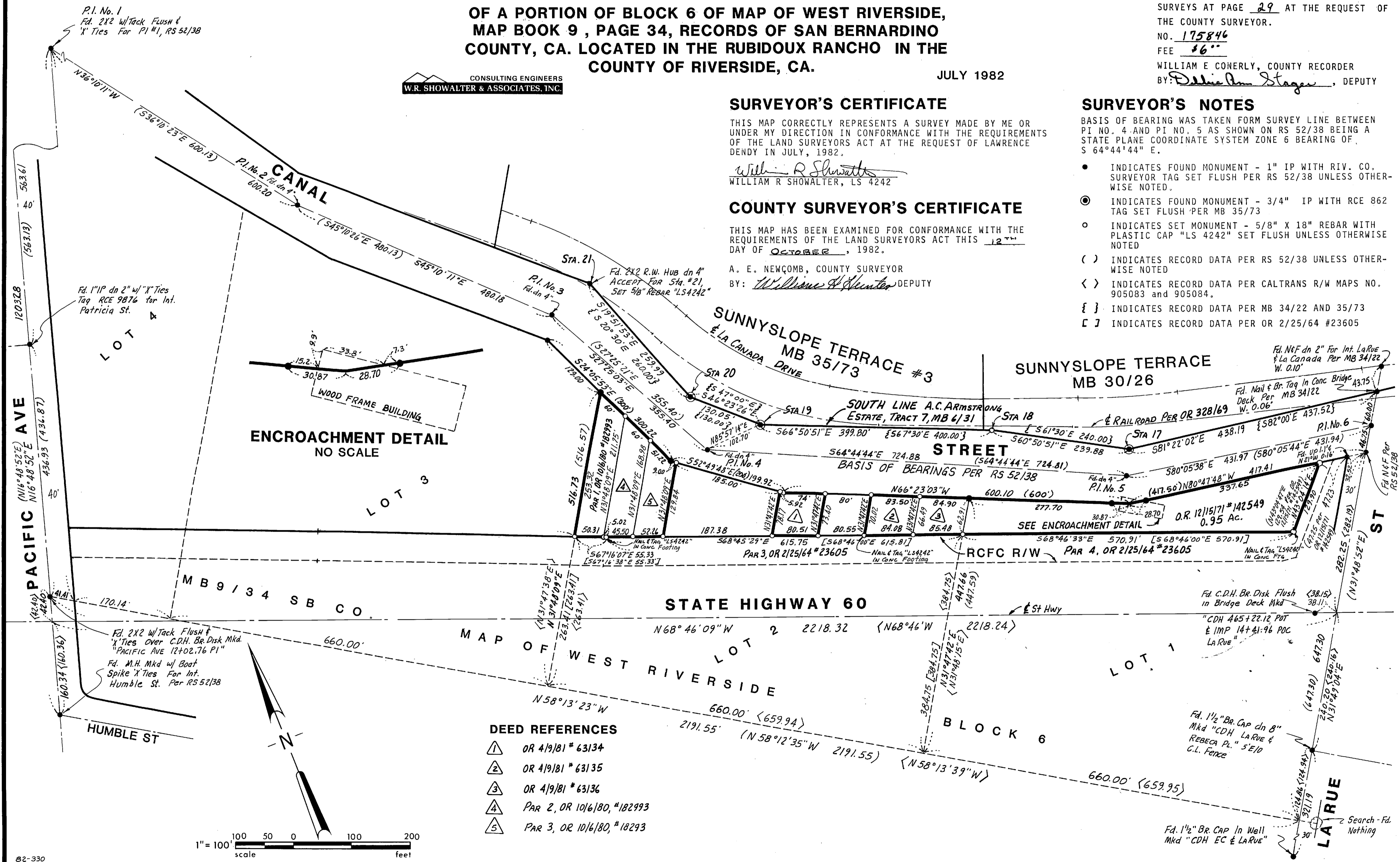
THIS MAP HAS BEEN EXAMINED FOR CONFORMANCE WITH THE
REQUIREMENTS OF THE LAND SURVEYORS ACT THIS 12TH
DAY OF OCTOBER, 1982.

A. E. NEWCOMB, COUNTY SURVEYOR
BY: William H. Hunter DEPUTY

SURVEYOR'S NOTES

BASIS OF BEARING WAS TAKEN FROM SURVEY LINE BETWEEN
PI NO. 4 AND PI NO. 5 AS SHOWN ON RS 52/38 BEING A
STATE PLANE COORDINATE SYSTEM ZONE 6 BEARING OF
S 64°44'44" E.

- INDICATES FOUND MONUMENT - 1" IP WITH RIV. CO. SURVEYOR TAG SET FLUSH PER RS 52/38 UNLESS OTHERWISE NOTED.
- ⊙ INDICATES FOUND MONUMENT - 3/4" IP WITH RCE 862 TAG SET FLUSH PER MB 35/73
- INDICATES SET MONUMENT - 5/8" X 18" REBAR WITH PLASTIC CAP "LS 4242" SET FLUSH UNLESS OTHERWISE NOTED
- () INDICATES RECORD DATA PER RS 52/38 UNLESS OTHERWISE NOTED
- < > INDICATES RECORD DATA PER CALTRANS R/W MAPS NO. 905083 AND 905084.
- { } INDICATES RECORD DATA PER MB 34/22 AND 35/73
- [] INDICATES RECORD DATA PER OR 2/25/64 #23605



- DEED REFERENCES**
- ① OR 4/9/81 # 63134
 - ② OR 4/9/81 # 63135
 - ③ OR 4/9/81 # 63136
 - ④ PAR 2, OR 10/6/80, #182993
 - ⑤ PAR 3, OR 10/6/80, #18293

RS 69/29