

IN THE CITY OF RIVERSIDE AND THE UNINCORPORATED LAND OF THE COUNTY OF RIVERSIDE, STATE OF CALIFORNIA.

# RECORD OF SURVEY

BEING A SURVEY OF LOTS 25, 26, 27 AND 28 IN BLOCK 11 OF J.F. MOULTON AND H.B. PRAED SUBDIVISION, AS SHOWN BY MAPS ON FILE IN BOOK 2, PAGE 3 AND BOOK 3, PAGES 13-14 OF MAPS, RECORDS OF RIVERSIDE COUNTY, CALIF. IN SECTION 19, T.33, R.5W, S.18.N.; AND SECTION 30, T.35, R.5W AND SECTIONS 24 AND 25, T.35, R.5W. OF RANCHO EL SOBRIANTE DE SAN JACINTO PER M.B. 1, PAGE 8 OF RECORDS OF SAN BERNARDINO COUNTY, CALIFORNIA.

AUGUST 1983

SCALE: 1"=200'

**HAWKINS, ROBERTSON & ASSOCIATES**

## RECORDER'S CERTIFICATE

FILED THIS 20 DAY OF SEPT 1983 AT 2:45 PM IN BOOK 70 OF RECORDS OF SURVEY AT PAGES 46+47 AT THE REQUEST OF THE COUNTY SURVEYOR FEE: \$8.00 NO.: 192448

WILLIAM E. CONERLY, COUNTY RECORDER  
BY *William E. Conerly* DEPUTY

COPY

RS 70/46

### SURVEYOR'S NOTES

- DENOTES SET 3/4" I.P. FLUSH WITH PLASTIC PLUG STAMPED L.S. 3163
- DENOTES FOUND MONUMENT AS NOTED
- ( ) DENOTES DATA PER M.B. 103/89-91, UNLESS OTHERWISE NOTED.
- [ ] DENOTES DATA PER R.S. 19/91
- < > DENOTES DATA PER R.S. 33/79
- } [ DENOTES DATA PER M.B. 2/3
- [ ] DENOTES DATA PER M.B. 3/13-14
- R&M DENOTES RECORD AND MEASURED PER M.B. 2/3, UNLESS OTHERWISE NOTED.
- (R&M) DENOTES RECORD AND MEASURED PER M.B. 3/13-14

### BASIS OF BEARINGS

BEARINGS ARE BASED ON THE CENTERLINE OF VICTORIA AVE. AS BEING N. 55° 35' 00" E. PER TRACT NO. 4915, M.B. 85/12-14, RECORDS OF RIVERSIDE COUNTY, CALIFORNIA.

### SURVEYOR'S CERTIFICATE

THIS MAP CORRECTLY REPRESENTS A SURVEY MADE BY ME OR UNDER MY DIRECTION IN CONFORMANCE WITH THE REQUIREMENTS OF THE LAND SURVEYORS ACT AT THE REQUEST OF JOSEPHINE CHARLEBOIS IN JULY, 1983

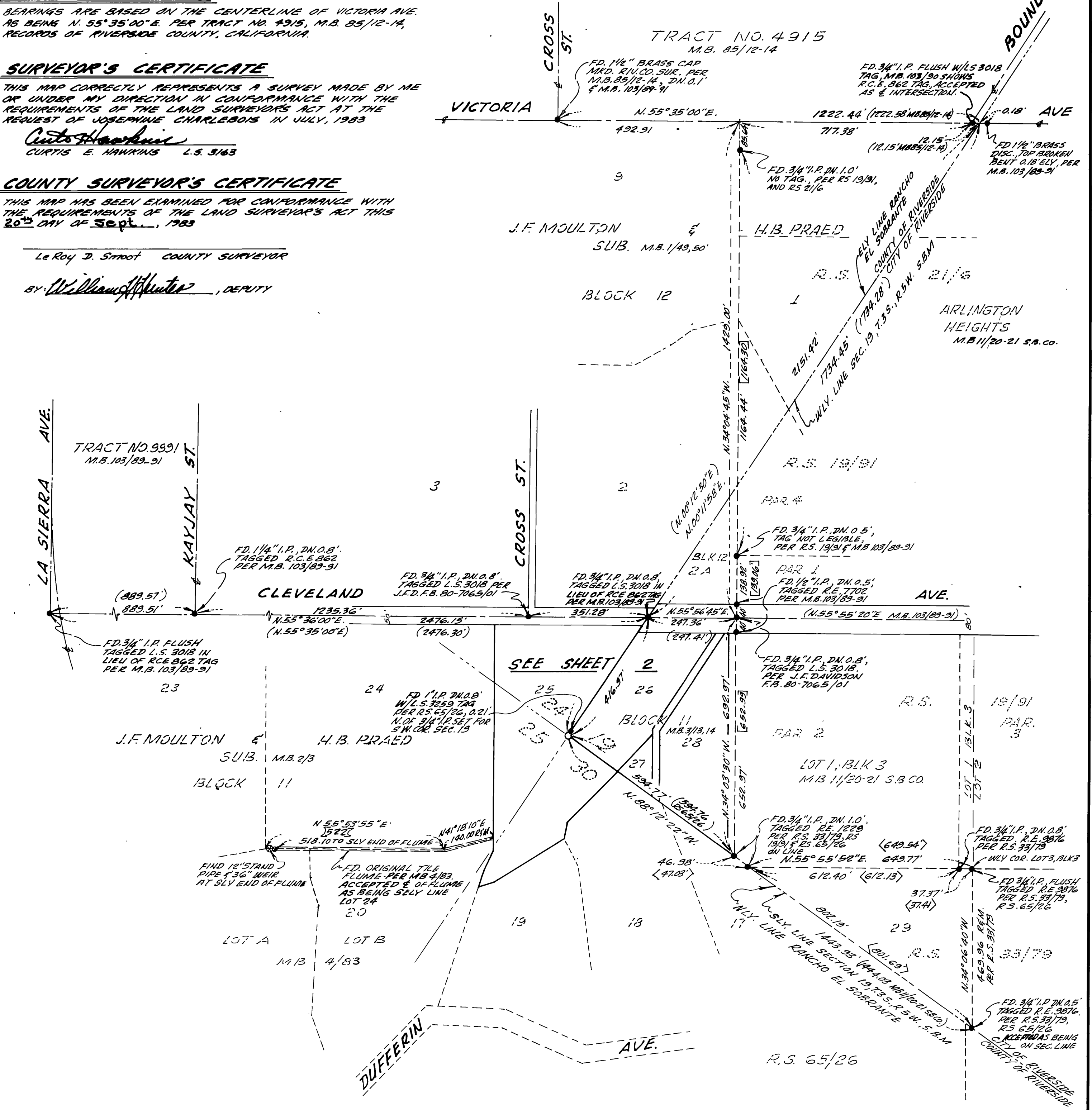
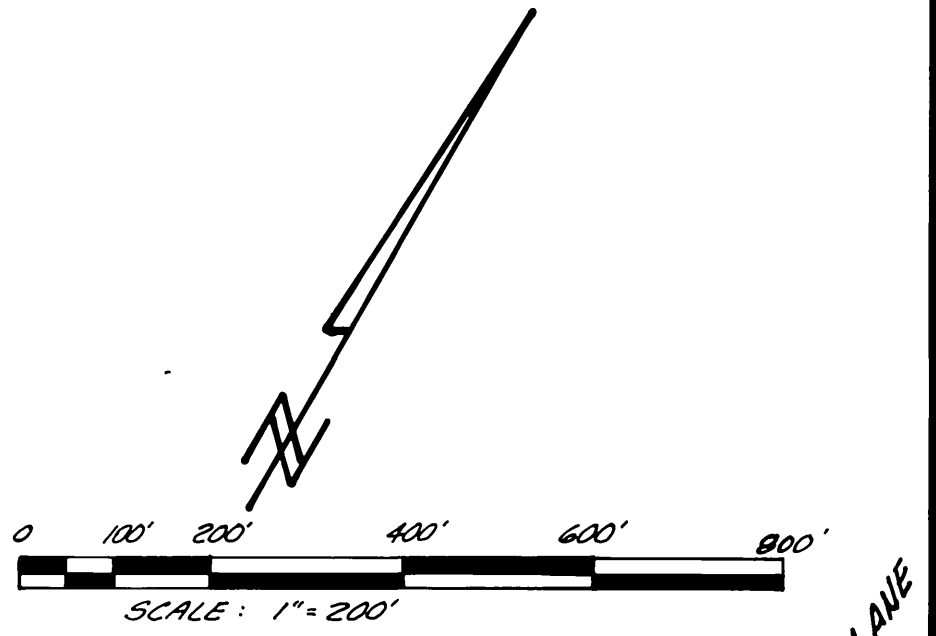
*Curtis E. Hawkins*  
CURTIS E. HAWKINS L.S. 3163

### COUNTY SURVEYOR'S CERTIFICATE

THIS MAP HAS BEEN EXAMINED FOR CONFORMANCE WITH THE REQUIREMENTS OF THE LAND SURVEYORS ACT THIS 20<sup>th</sup> DAY OF SEPT., 1983

Le Roy D. Stroop COUNTY SURVEYOR

BY *William E. Conerly*, DEPUTY



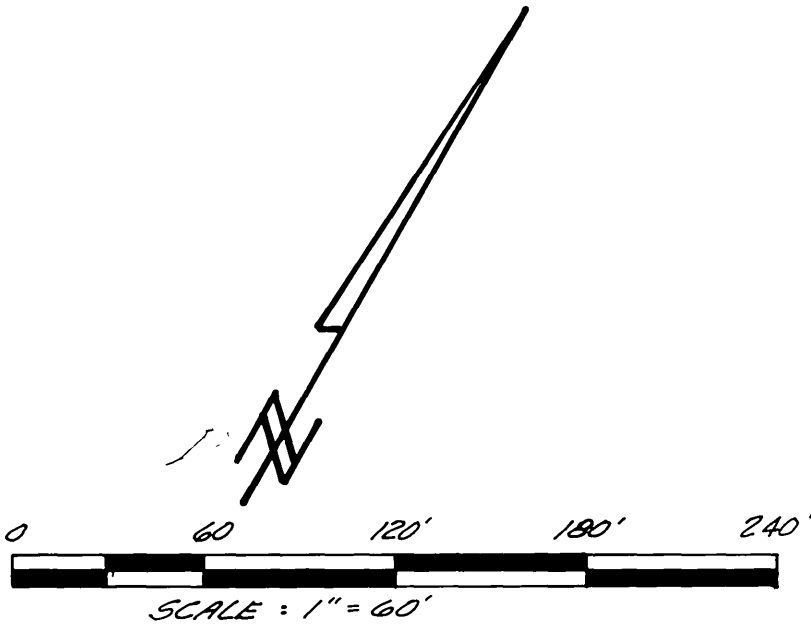
IN THE CITY OF RIVERSIDE AND THE UNINCORPORATED LAND OF THE COUNTY OF RIVERSIDE, STATE OF CALIFORNIA

# RECORD OF SURVEY

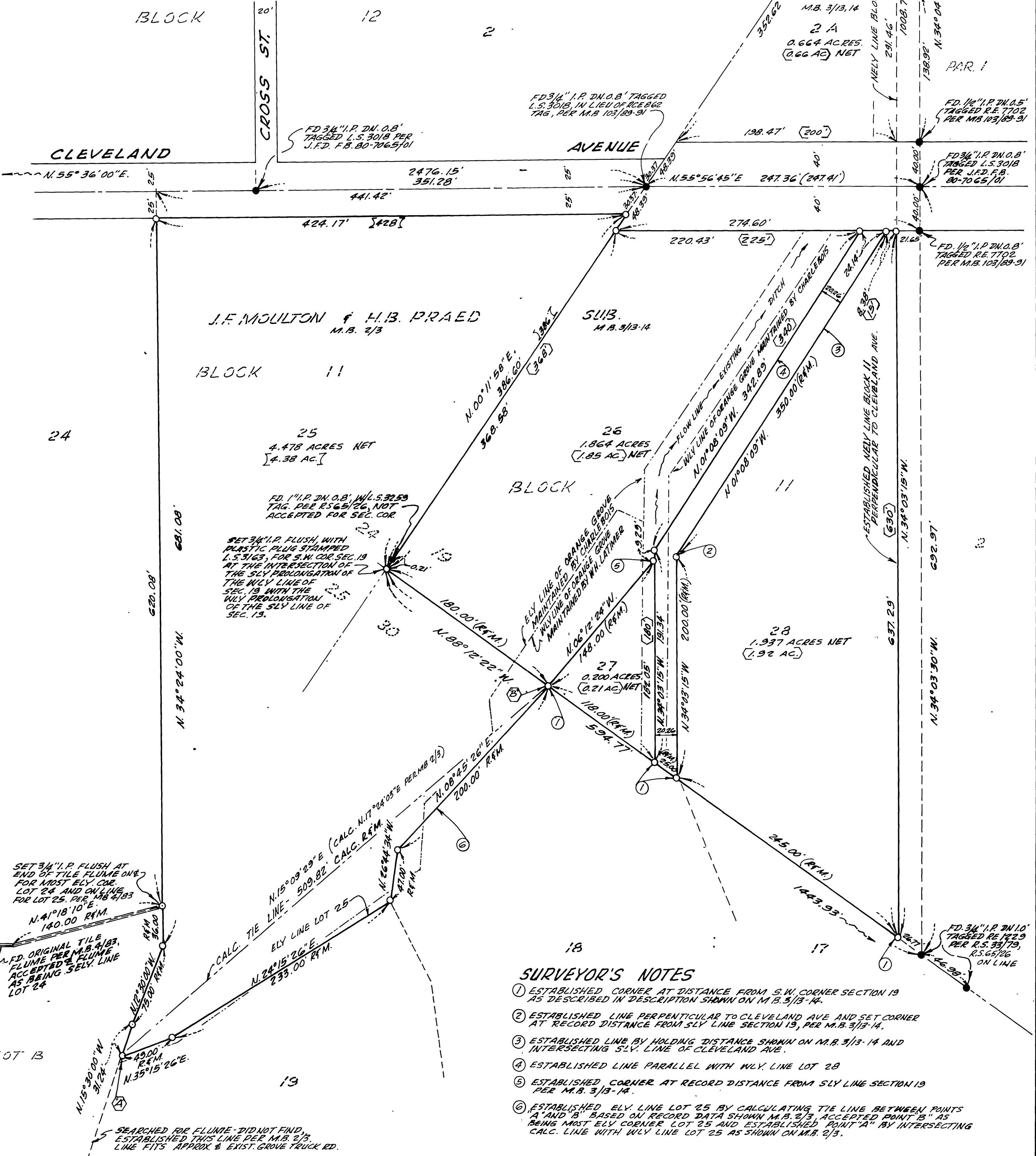
AUGUST 1983

SCALE: 1"=60'

HAWKINS, ROBERTSON & ASSOCIATES



J.F. MOUTON & H.B. PRAED SLIB.  
M.B. 1/49,50



### SURVEYOR'S NOTES

- ① ESTABLISHED CORNER AT DISTANCE FROM S.W. CORNER SECTION 19 AS DESCRIBED IN DESCRIPTION SHOWN ON M.B. 3/13-14.
- ② ESTABLISHED LINE PERPENDICULAR TO CLEVELAND AVE AND SET CORNER AT RECORD DISTANCE FROM SLY LINE SECTION 19, PER M.B. 3/13-14.
- ③ ESTABLISHED LINE BY HOLDING DISTANCE SHOWN ON M.B. 3/13-14 AND INTERSECTING SLY LINE OF CLEVELAND AVE.
- ④ ESTABLISHED LINE PARALLEL WITH WLY LINE LOT 28
- ⑤ ESTABLISHED CORNER AT RECORD DISTANCE FROM SLY LINE SECTION 19 PER M.B. 3/13-14.
- ⑥ ESTABLISHED ELY LINE LOT 25 BY CALCULATING TIE LINE BETWEEN POINTS "A" AND "B" BASED ON RECORD DATA SHOWN M.B. 2/3, ACCEPTED POINT "B" AS BEING MOST ELY CORNER LOT 25 AND ESTABLISHED POINT "A" BY INTERSECTING CALC. LINE WITH WLY LINE LOT 25 AS SHOWN ON M.B. 2/3.

RS 70/47

10/47