

Copy

RS 72/1

IN THE CITY OF CORONA, COUNTY OF RIVERSIDE, STATE OF CALIFORNIA

SHEET 1 OF 15 SHEETS

# RECORD OF SURVEY

OF A PORTION OF THE LANDS OF THE RIVERSIDE LAND AND IRRIGATING COMPANY, M.B. 1/70, RECORDS OF SAN BERNARDINO COUNTY, CALIFORNIA AND M.B. 1/44, RECORDS OF RIVERSIDE COUNTY, CALIFORNIA, A PORTION OF RIVERSIDE LAND COMPANY'S FOOTHILL TRACT, M.B. 2/42, RECORDS OF RIVERSIDE COUNTY, CALIFORNIA, AND A PORTION OF ASSESSOR'S MAP NO. 30, A.M.B. 1/40-41, RECORDS OF RIVERSIDE COUNTY, CALIFORNIA, LYING WITHIN SECTIONS 19, 20, 21, 22, 28, 29 AND 30, T. 3 S., R. 6 W., AS SHOWN BY SECTIONIZED SURVEY OF RANCHO EL SOBRANTE DE SAN JACINTO, M.B. 1/8 AND 7/10, RECORDS OF SAN BERNARDINO COUNTY, CALIFORNIA.

NESTE, BRUDIN & STONE, INCORPORATED.....CIVIL ENGINEERS

AUGUST, 1982

### RECORDER'S CERTIFICATE

FILED THIS 18th DAY OF OCTOBER, 1982, AT 4:05 P.M. IN BOOK 72 OF RECORD OF SURVEYS AT PAGE 1-15 AT THE REQUEST OF THE COUNTY SURVEYOR.  
NO. 226080  
FEE \$2400  
WILLIAM E. CONERLY  
COUNTY RECORDER

BY: Sarita Ragan, DEPUTY

### SURVEYOR'S NOTES:

1. BASIS OF BEARINGS FOR THIS MAP IS A LINE BETWEEN U.S.G.S. TRI-STATIONS "GRAPE" AND "LINN" WITHIN CALIFORNIA PLANE CO-ORDINATE SYSTEM ZONE 6 TAKEN AS N43°24'47"E.
2. O INDICATES 1-1/2" I.D. IRON PIPE TAGGED R.C.E. 8613 SET FLUSH IN CONCRETE.
3. ● INDICATES FOUND MONUMENT. SEE 'FOUND MONUMENT DESCRIPTIONS' ON SHEET 14 AND 15.
4. < > INDICATES RECORD DATA PER M.B. 47/87-90 AND M.B. 50/51-55.
5. ( ) INDICATES RECORD DATA PER STATE OF CALIFORNIA DIVISION OF HIGHWAYS MONUMENTATION MAPS 440054, 440055, 440056, 440061 THROUGH 440066, INCLUSIVE, & 440071 (RIV. CO. SURV. FILE NO'S 204/799-808), UNLESS OTHERWISE NOTED.
6. [ ] INDICATES RECORD DATA PER R.S. 47/17.
7. << >> INDICATES RECORD DATA PER R.S. 44/97.
8. ○ INDICATES CITY OF CORONA RIGHT OF WAY PARCEL NUMBERS.
9. DISTANCES SHOWN ON THIS MAP ARE GROUND DISTANCES, UNLESS OTHERWISE NOTED. TO OBTAIN GRID DISTANCES, MULTIPLY BY 0.99996167.
10. ⊞ ⊞ INDICATES RECORD DATA PER R.S. 35/61.
11. << >> INDICATES RECORD DATA PER PM. 108/21-23.

### SURVEYOR'S CERTIFICATE

THIS MAP CORRECTLY REPRESENTS A SURVEY MADE BY ME OR UNDER MY DIRECTION IN CONFORMANCE WITH THE REQUIREMENTS OF THE LAND SURVEYORS ACT AT THE REQUEST OF THE CITY OF CORONA IN JANUARY, 1982.

Norman A. Neste  
NORMAN A. NESTE, R.C.E. 8613

### CITY ENGINEER'S CERTIFICATE OF COMPLIANCE

THIS MAP HAS BEEN EXAMINED THIS 18th DAY OF OCTOBER, 1982, FOR COMPLIANCE WITH THE PROVISIONS OF THE SUB-DIVISION MAP ACT AND ANY APPLICABLE LOCAL ORDINANCE ENACTED PURSUANT THERETO.

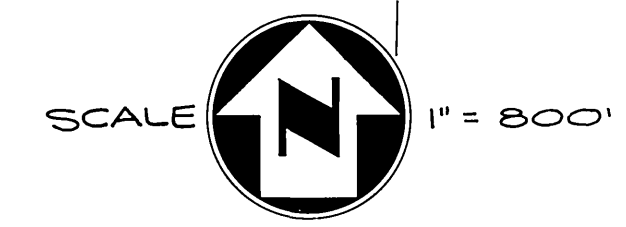
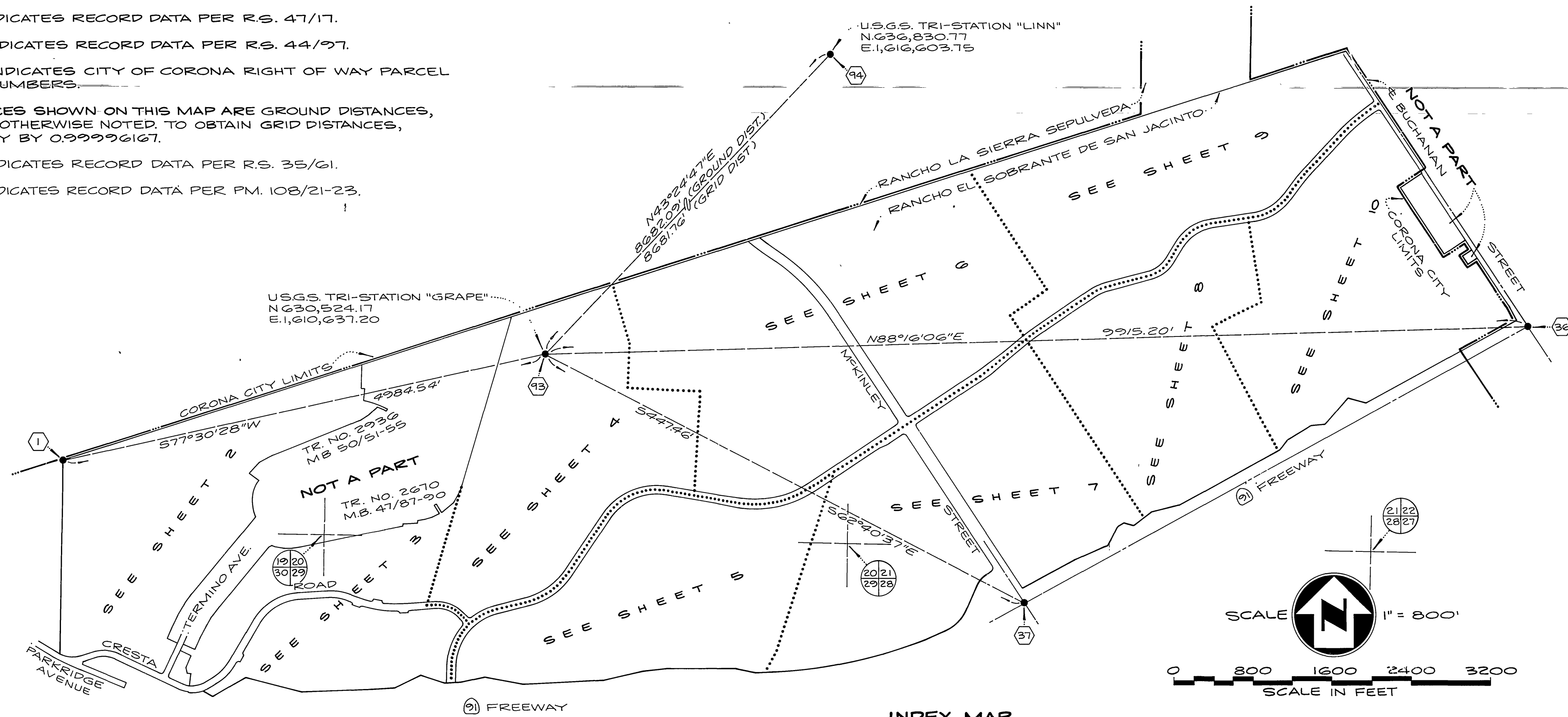
Joseph R. Palencia  
JOSEPH R. PALENCIA, CITY ENGINEER, R.C.E. 25267

### COUNTY SURVEYOR'S CERTIFICATE

THIS MAP HAS BEEN EXAMINED FOR CONFORMANCE WITH THE REQUIREMENTS OF THE LAND SURVEYORS ACT THIS 18th DAY OF OCT, 1982.

LeRoy D. Smoot, COUNTY SURVEYOR

BY: Gerald A. Adams  
DEPUTY



INDEX MAP

E79020-025-16-14133

RS 72/1

RS 72/1

Copy

IN THE CITY OF CORONA, COUNTY OF RIVERSIDE, STATE OF CALIFORNIA

SHEET 2 OF 15 SHEETS

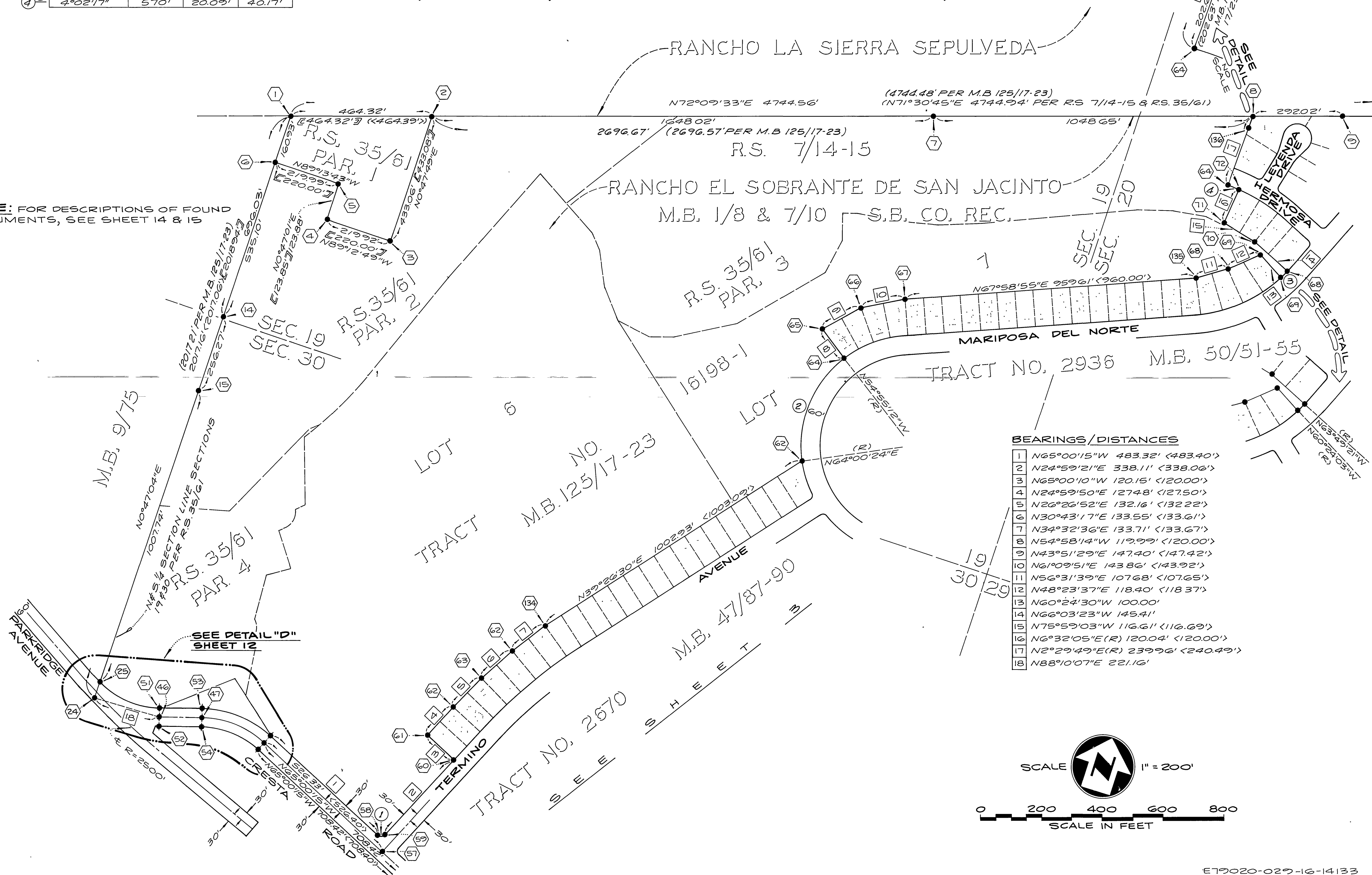
# RECORD OF SURVEY

NESTE, BRUDIN & STONE, INCORPORATED.....CIVIL ENGINEERS

AUGUST, 1982

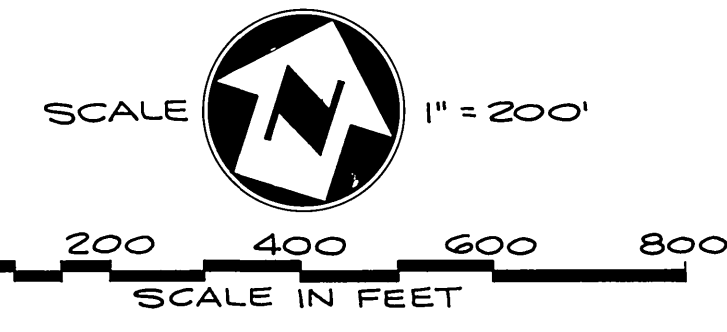
	Δ	R	T	L
1	90°00'24"	13'	13.00'	20.42'
2	61°04'24"	360'	212.37'	383.74'
3	3°25'18"	475'	14.19'	28.37'
4	4°02'17"	570'	20.09'	40.17'

NOTE: FOR DESCRIPTIONS OF FOUND MONUMENTS, SEE SHEET 14 & 15



BEARINGS/DISTANCES

1	N65°00'15"W	483.32'	<483.40'>
2	N24°59'21"E	338.11'	<338.06'>
3	N65°00'10"W	120.15'	<120.00'>
4	N24°59'50"E	1274.8'	<127.50'>
5	N26°26'52"E	132.16'	<132.22'>
6	N30°43'17"E	133.55'	<133.61'>
7	N34°32'36"E	133.71'	<133.67'>
8	N54°58'14"W	119.99'	<120.00'>
9	N43°51'29"E	147.40'	<147.42'>
10	N61°09'51"E	143.86'	<143.92'>
11	N56°31'39"E	107.68'	<107.65'>
12	N48°23'37"E	118.40'	<118.37'>
13	N60°24'30"W	100.00'	
14	N66°03'23"W	145.41'	
15	N75°59'03"W	116.61'	<116.69'>
16	N6°32'05"E(R)	120.04'	<120.00'>
17	N2°29'49"E(R)	239.96'	<240.49'>
18	N88°10'07"E	221.16'	



E79020-029-16-14133

RS 72/2

RS 72/2

RS 72/2

IN THE CITY OF CORONA, COUNTY OF RIVERSIDE, STATE OF CALIFORNIA

# RECORD OF SURVEY

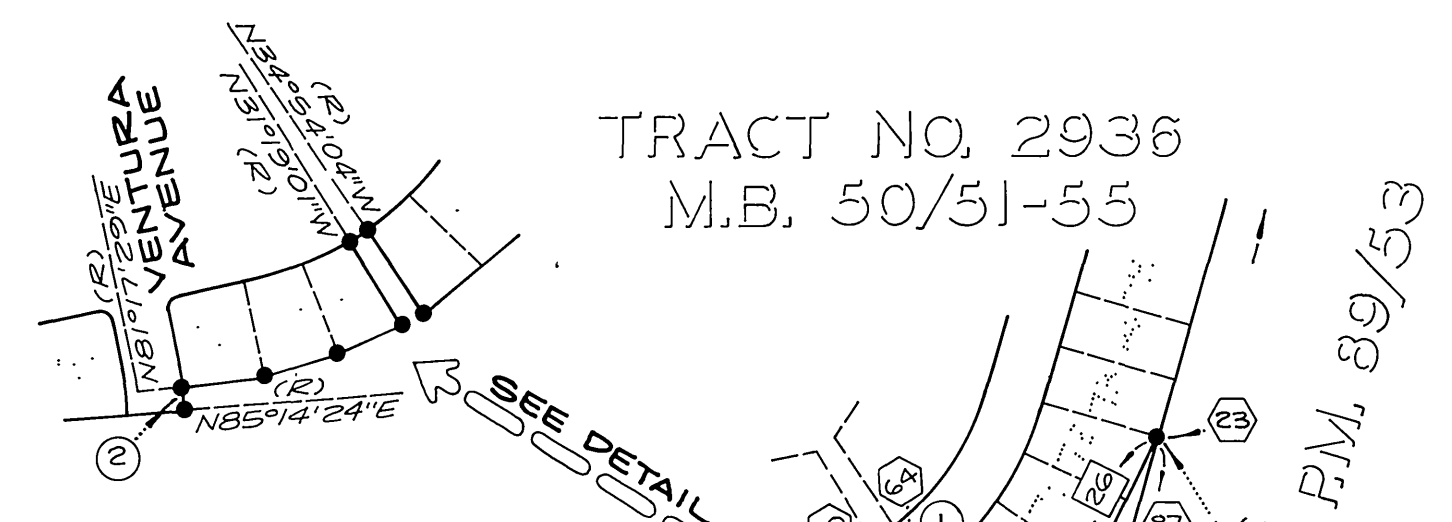
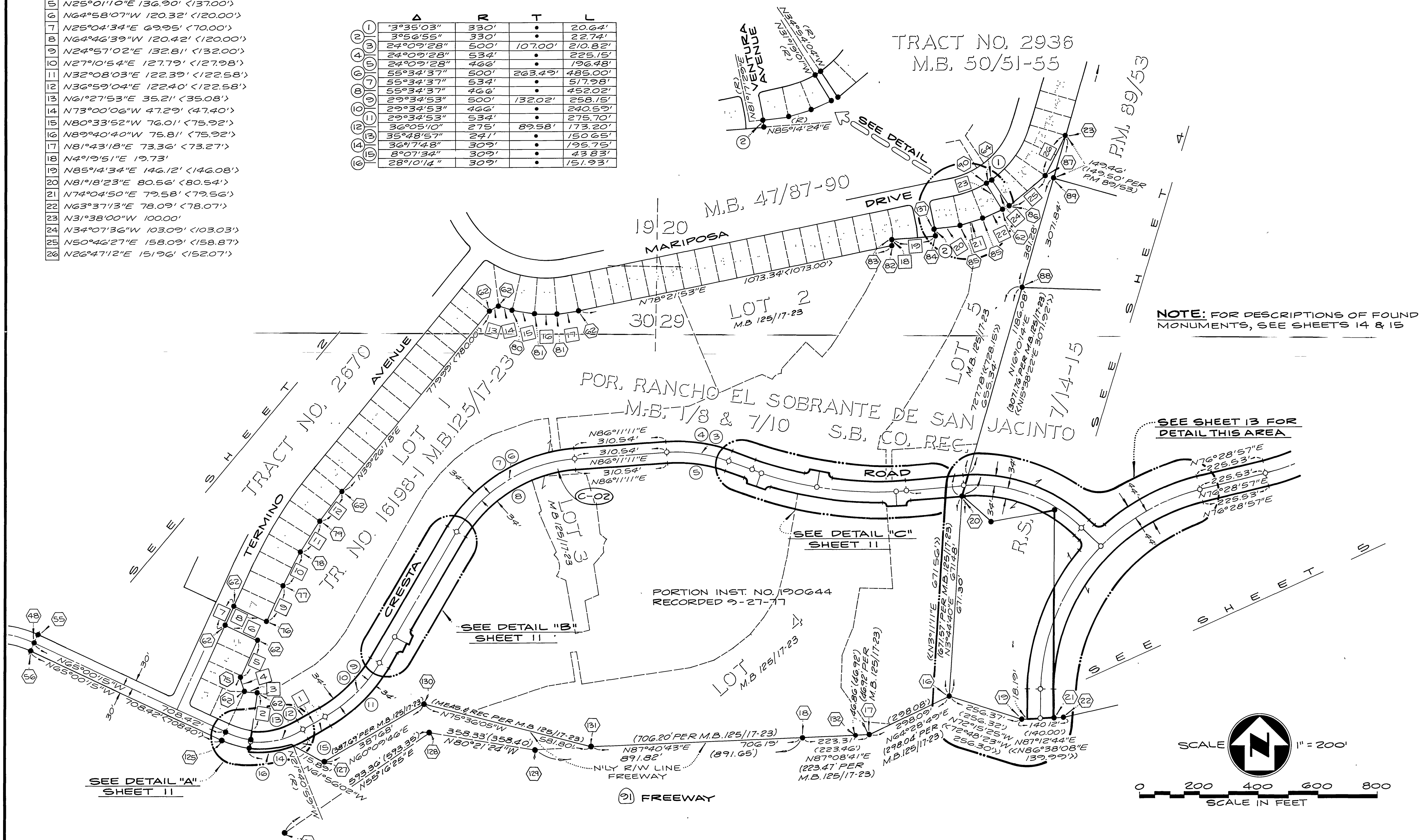
NESTE, BRUDIN & STONE, INCORPORATED.....CIVIL ENGINEERS

AUGUST, 1982

### BEARINGS/DISTANCES

- 1 N60°11'27"E 97.27'
- 2 N8°22'01"E 128.15' <128.00'>
- 3 N84°04'27"W 43.58' <43.41'>
- 4 N15°50'22"W 48.92'
- 5 N25°01'10"E 136.90' <137.00'>
- 6 N64°58'07"W 120.32' <120.00'>
- 7 N25°04'34"E 69.95' <70.00'>
- 8 N64°46'39"W 120.42' <120.00'>
- 9 N24°57'02"E 132.81' <132.00'>
- 10 N27°10'54"E 127.79' <127.98'>
- 11 N32°08'03"E 122.39' <122.58'>
- 12 N36°59'04"E 122.40' <122.58'>
- 13 N61°27'53"E 35.21' <35.08'>
- 14 N73°00'06"W 47.29' <47.40'>
- 15 N80°33'52"W 76.01' <75.92'>
- 16 N89°40'40"W 75.81' <75.92'>
- 17 N81°43'18"E 73.36' <73.27'>
- 18 N4°19'51"E 19.73'
- 19 N85°14'34"E 146.12' <146.08'>
- 20 N81°18'23"E 80.56' <80.54'>
- 21 N74°04'50"E 79.58' <79.56'>
- 22 N63°37'13"E 78.09' <78.07'>
- 23 N31°38'00"W 100.00'
- 24 N34°07'36"W 103.09' <103.03'>
- 25 N50°46'27"E 158.09' <158.87'>
- 26 N26°47'12"E 151.96' <152.07'>

	Δ	R	T	L
1	3°35'03"	330'	•	20.64'
2	3°56'55"	330'	•	22.74'
3	24°09'28"	500'	107.00'	210.82'
4	24°09'28"	534'	•	225.15'
5	55°34'37"	500'	263.49'	485.00'
6	55°34'37"	534'	•	517.98'
7	55°34'37"	466'	•	452.02'
8	29°34'53"	500'	132.02'	258.15'
9	29°34'53"	466'	•	240.59'
10	29°34'53"	534'	•	275.70'
11	36°05'10"	275'	89.58'	173.20'
12	35°48'57"	241'	•	150.65'
13	36°17'48"	309'	•	196.75'
14	8°07'34"	309'	•	43.83'
15	28°10'14"	309'	•	151.93'



NOTE: FOR DESCRIPTIONS OF FOUND MONUMENTS, SEE SHEETS 14 & 15

SEE SHEET 13 FOR DETAIL THIS AREA

SEE DETAIL "C" SHEET 11

SEE DETAIL "B" SHEET 11

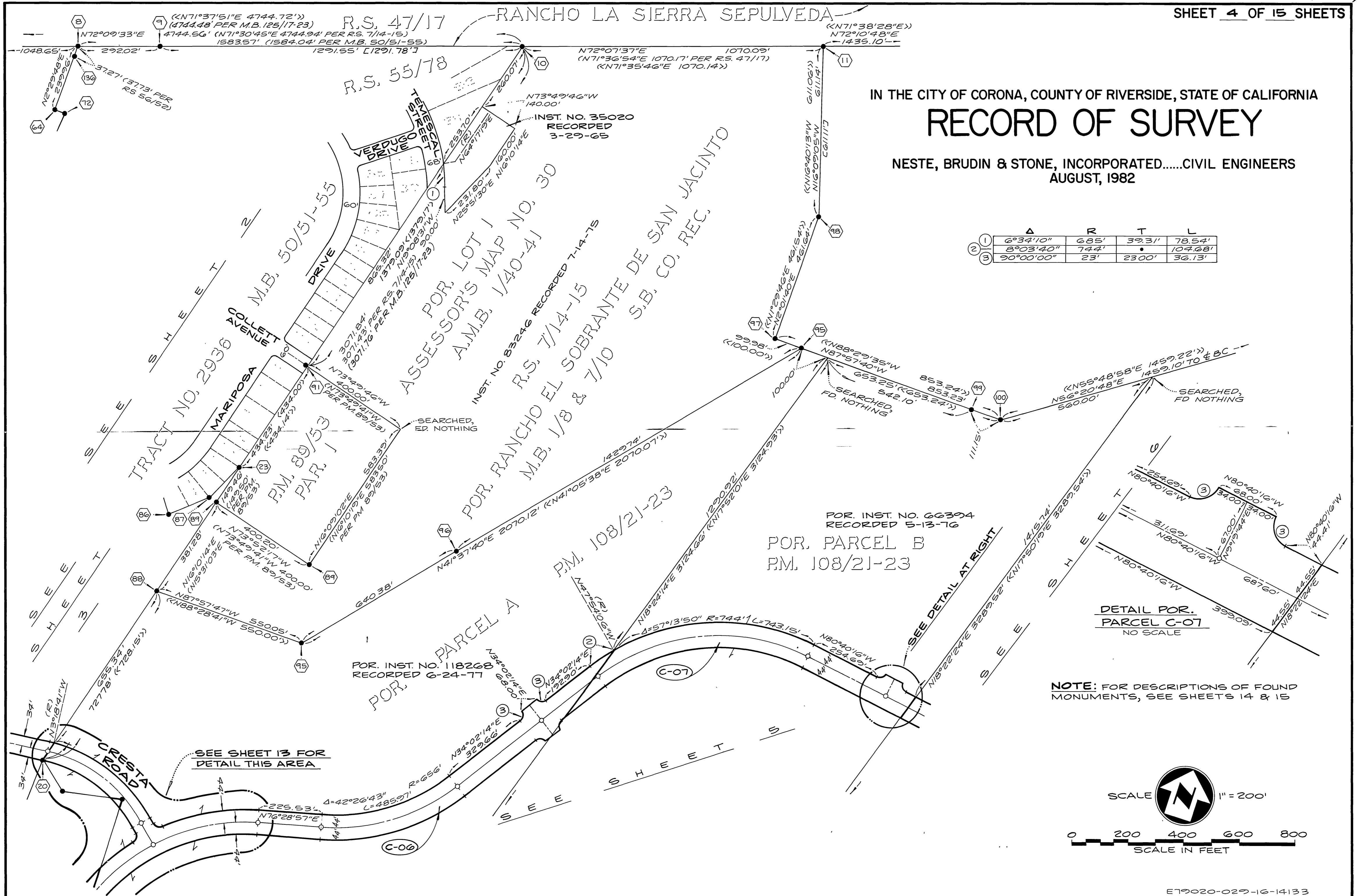
SEE DETAIL "A" SHEET 11



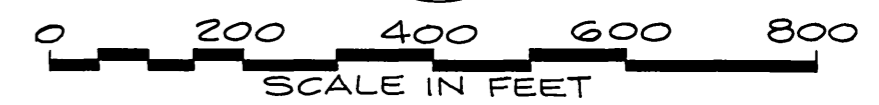
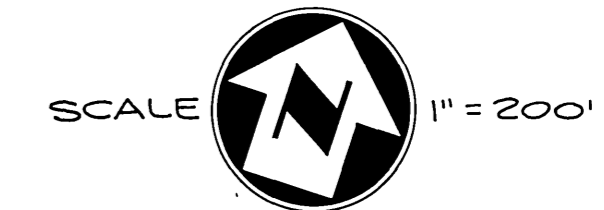
copy 72/4  
RS 72/4

IN THE CITY OF CORONA, COUNTY OF RIVERSIDE, STATE OF CALIFORNIA  
**RECORD OF SURVEY**  
 NESTE, BRUDIN & STONE, INCORPORATED.....CIVIL ENGINEERS  
 AUGUST, 1982

	Δ	R	T	L
(1)	6°34'10"	685'	39.31'	78.54'
(2)	8°03'40"	744'	•	104.68'
(3)	90°00'00"	23'	2300'	36.13'



NOTE: FOR DESCRIPTIONS OF FOUND MONUMENTS, SEE SHEETS 14 & 15



E79020-029-16-14133

RS 72/4

RS 72/4



IN THE CITY OF CORONA, COUNTY OF RIVERSIDE, STATE OF CALIFORNIA

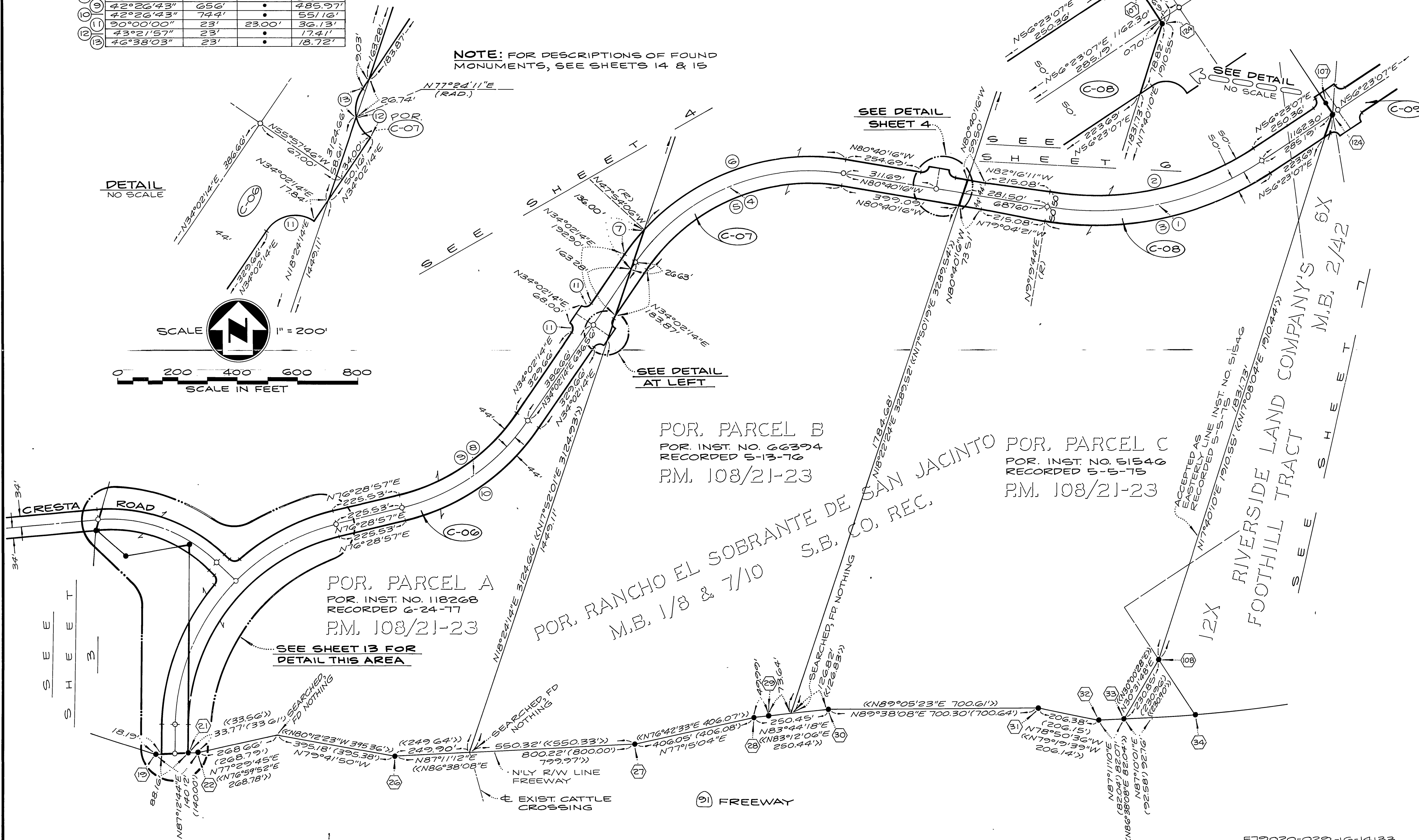
# RECORD OF SURVEY

NESTE, BRUDIN & STONE, INCORPORATED.....CIVIL ENGINEERS

AUGUST, 1982

	Δ	R	T	L
(1)	42°56'37"	1000'	393.34'	749.51'
(2)	42°56'37"	950'	•	712.03'
(3)	42°56'37"	1050'	•	786.98'
(4)	65°17'30"	700'	448.46'	797.69'
(5)	65°17'30"	656'	•	747.55'
(6)	57°13'50"	744'	•	743.15'
(7)	8°03'40"	744'	•	104.68'
(8)	42°26'43"	700'	271.83'	518.57'
(9)	42°26'43"	656'	•	485.97'
(10)	42°26'43"	744'	•	551.16'
(11)	90°00'00"	23'	23.00'	36.13'
(12)	43°21'57"	23'	•	17.41'
(13)	46°38'03"	23'	•	18.72'

NOTE: FOR DESCRIPTIONS OF FOUND MONUMENTS, SEE SHEETS 14 & 15



DETAIL NO SCALE

SCALE 1" = 200'



POR. PARCEL A  
POR. INST. NO. 118268  
RECORDED 6-24-77  
P.M. 108/21-23

POR. PARCEL B  
POR. INST. NO. 66394  
RECORDED 5-13-76  
P.M. 108/21-23

POR. PARCEL C  
POR. INST. NO. 51546  
RECORDED 5-5-75  
P.M. 108/21-23

POR. RANCHO EL SOBRANTE DE SAN JACINTO  
S.B. CO. REC.  
M.B. 1/8 & 7/10

RIVERSIDE LAND COMPANY'S  
FOOTHILL TRACT  
M.B. 2/42  
SHEET 7

IN THE CITY OF CORONA,  
COUNTY OF RIVERSIDE, STATE OF CALIFORNIA  
**RECORD OF SURVEY**

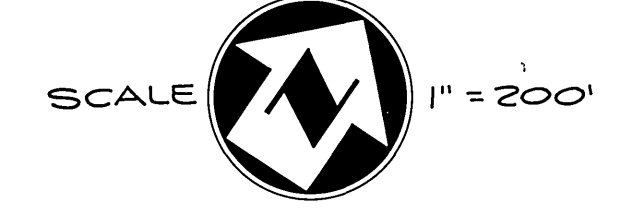
NESTE, BRUDIN & STONE, INCORPORATED.....CIVIL ENGINEERS

AUGUST, 1982

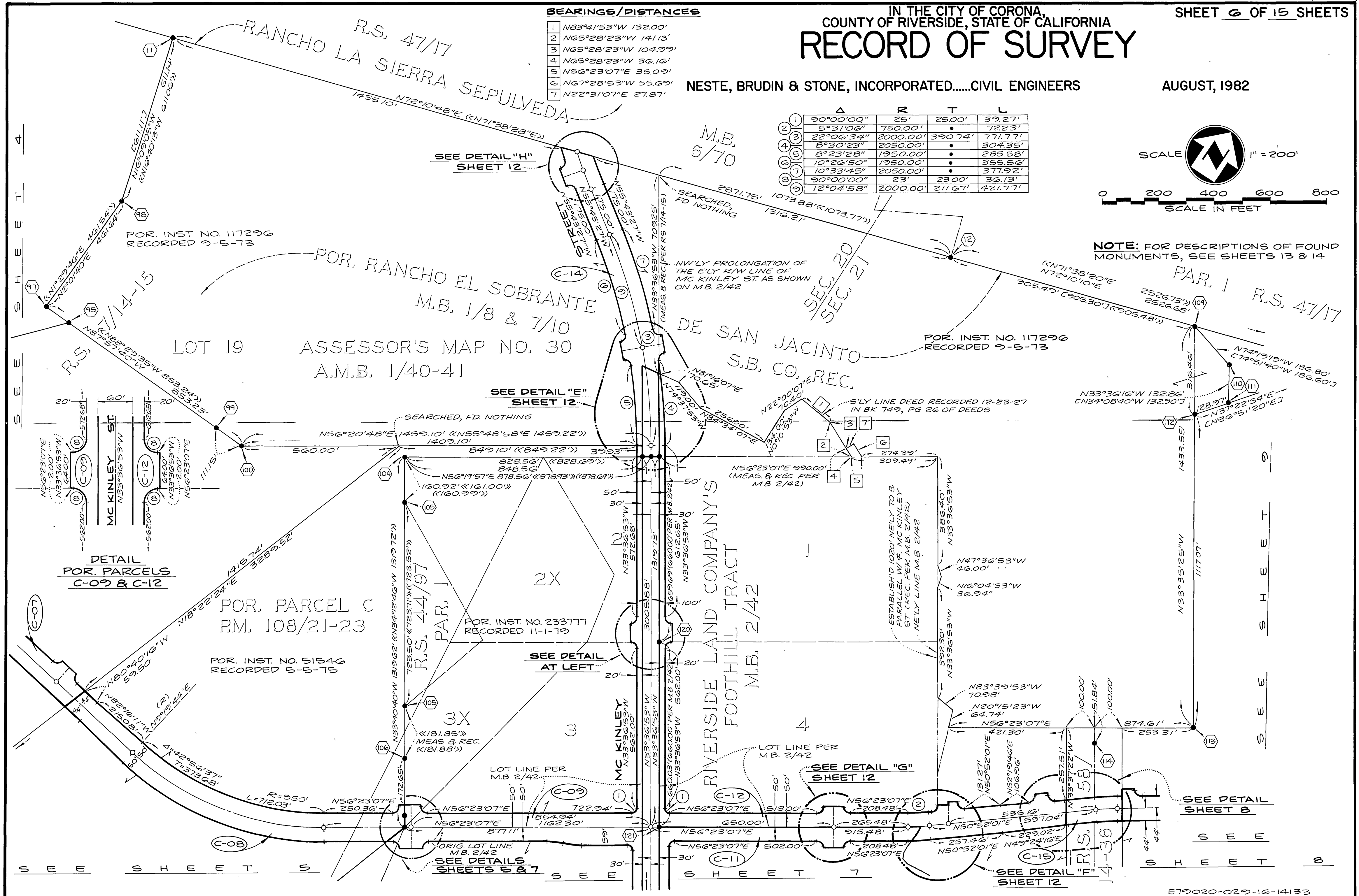
**BEARINGS/DISTANCES**

1	N83°41'53"W	132.00'
2	N65°28'23"W	141.13'
3	N65°28'23"W	104.99'
4	N65°28'23"W	32.16'
5	N56°23'07"E	35.09'
6	N67°28'53"W	55.69'
7	N22°31'07"E	27.87'

	Δ	R	T	L
1	90°00'00"	25'	25.00'	39.27'
2	5°31'06"	750.00'	•	72.23'
3	22°06'34"	2000.00'	390.74'	771.77'
4	8°30'23"	2050.00'	•	304.35'
5	8°23'28"	1950.00'	•	285.58'
6	10°26'50"	1950.00'	•	355.56'
7	10°33'45"	2050.00'	•	377.92'
8	90°00'00"	23'	23.00'	36.13'
9	12°04'58"	2000.00'	211.67'	421.77'



NOTE: FOR DESCRIPTIONS OF FOUND MONUMENTS, SEE SHEETS 13 & 14



RS 72/6

RS 72/6

IN THE CITY OF CORONA, COUNTY OF RIVERSIDE, STATE OF CALIFORNIA

SHEET 7 OF 15 SHEETS

# RECORD OF SURVEY

NESTE, BRUDIN & STONE, INCORPORATED.....CIVIL ENGINEERS

AUGUST, 1982

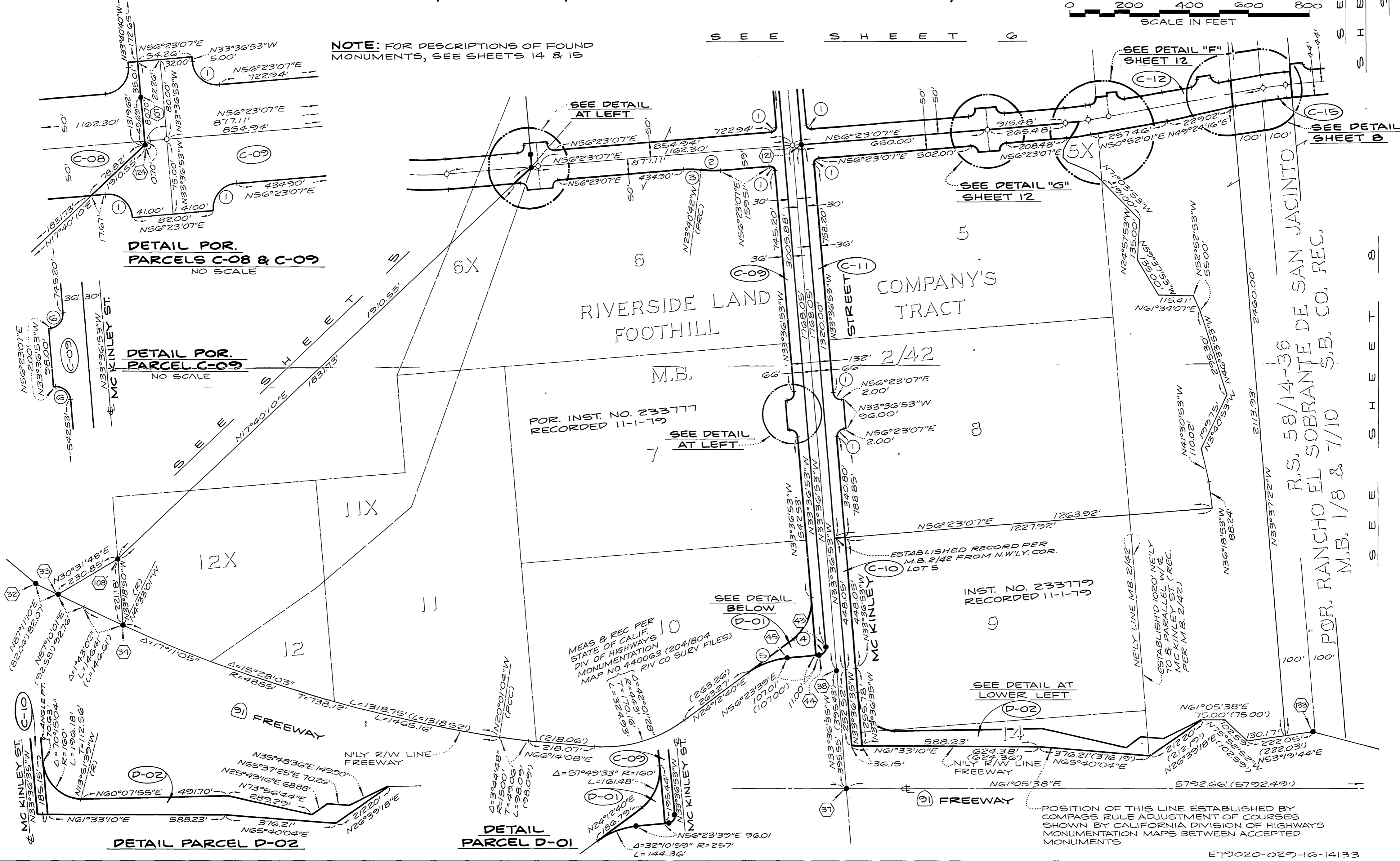


	Δ	R	T	L
(1)	90°00'00"	25'	25.00'	39.27'
(2)	9°56'11"	310'	.	53.76'
(3)	9°56'11"	290'	.	50.29'
(4)	90°00'32"	25'	25.00'	39.27'
(5)	32°10'59"	257'	74.14'	144.36'
(6)	90°00'00"	23'	23.00'	36.13'

(MEAS. & REC)

NOTE: FOR DESCRIPTIONS OF FOUND MONUMENTS, SEE SHEETS 14 & 15

SEE SHEET 6



RS 72/7

SEE SHEET 8

E79020-029-16-14133

RS 72/7



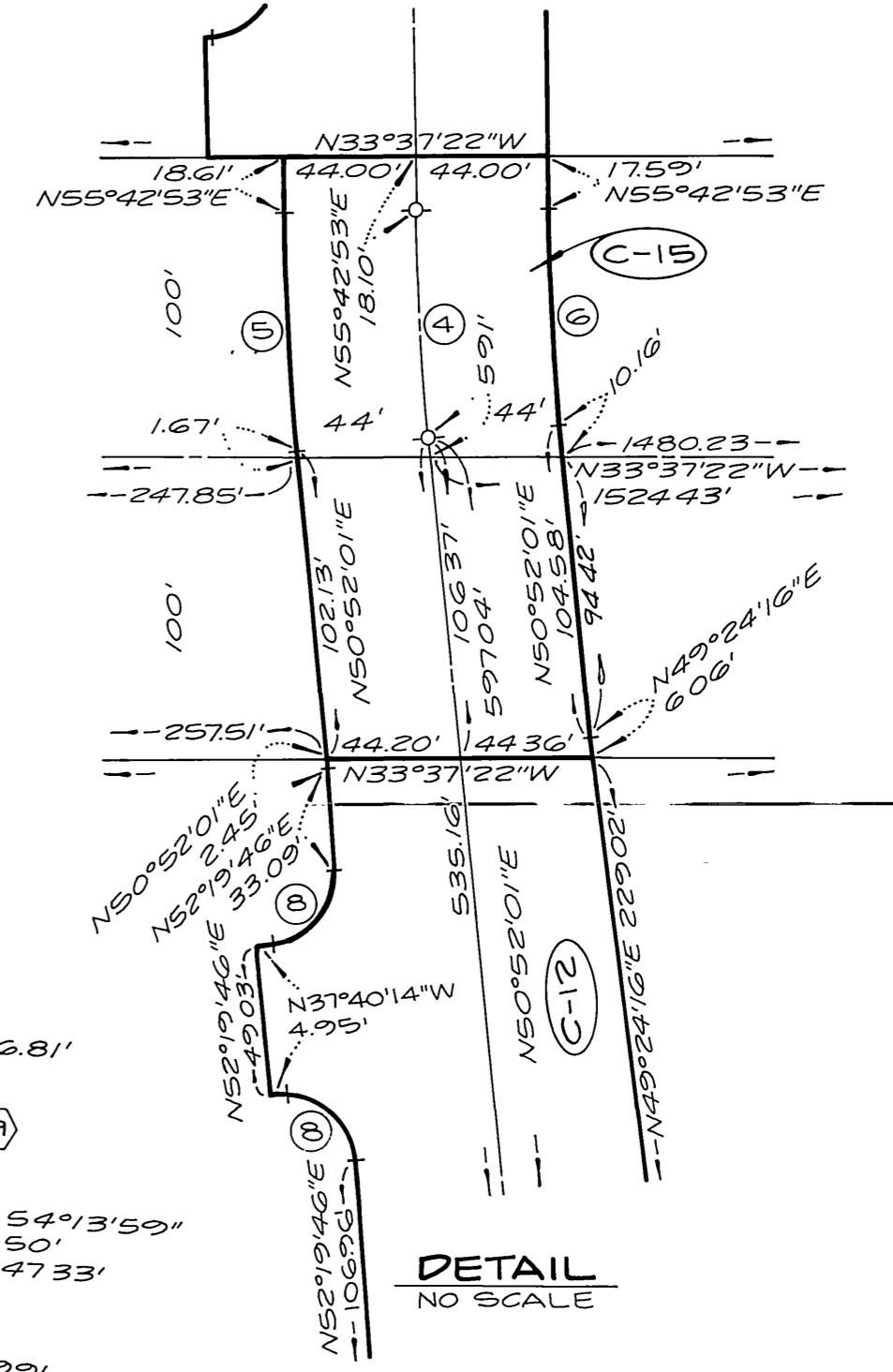
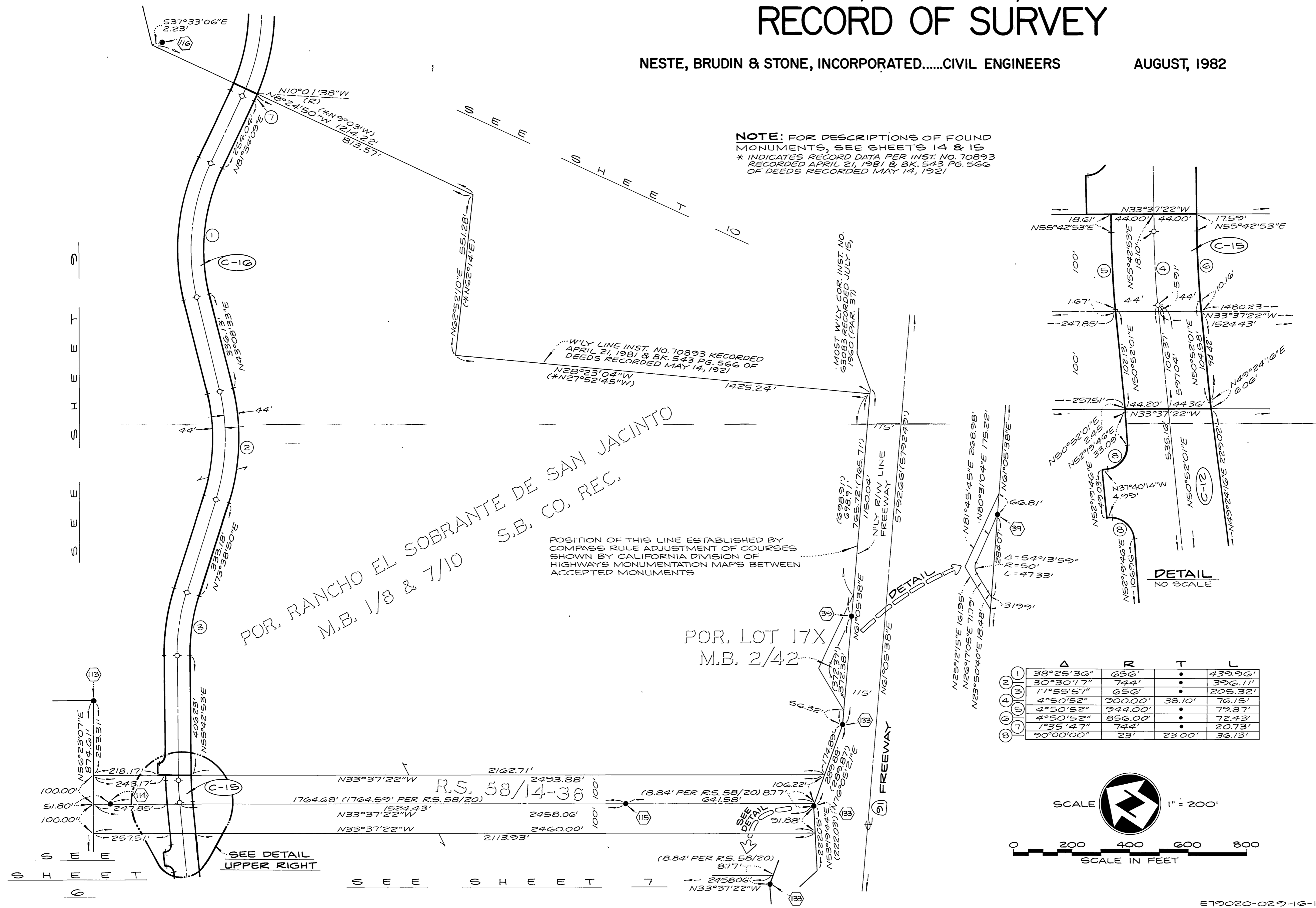
# RECORD OF SURVEY

NESTE, BRUDIN & STONE, INCORPORATED.....CIVIL ENGINEERS

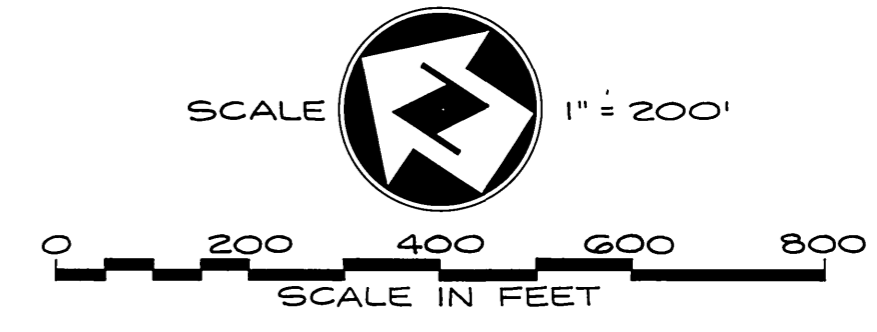
AUGUST, 1982

RS 72/8

**NOTE:** FOR DESCRIPTIONS OF FOUND MONUMENTS, SEE SHEETS 14 & 15  
\* INDICATES RECORD DATA PER INST. NO. 70893 RECORDED APRIL 21, 1981 & BK. 543 PG. 566 OF DEEDS RECORDED MAY 14, 1921



	Δ	R	T	L
(1)	38°25'30"	656'	•	439.90'
(2)	30°30'17"	744'	•	396.11'
(3)	17°55'57"	656'	•	205.32'
(4)	4°50'52"	900.00'	38.10'	76.15'
(5)	4°50'52"	944.00'	•	79.87'
(6)	4°50'52"	856.00'	•	72.43'
(7)	1°35'47"	744'	•	20.73'
(8)	90°00'00"	23'	23.00'	36.13'



RS 72/8

RS 72/8







TRACT NO. 2670  
M.B. 47/87-90

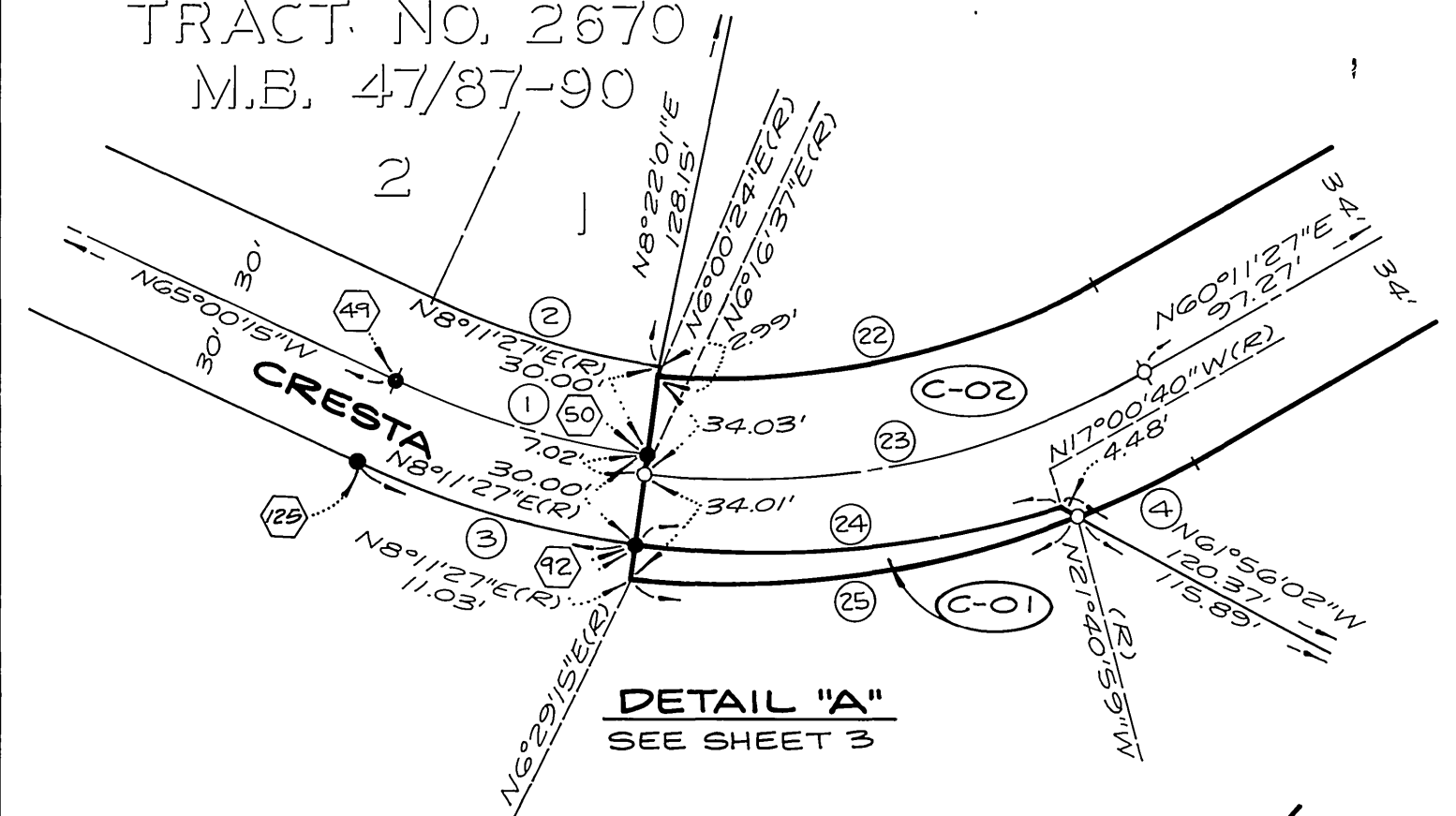
IN THE CITY OF CORONA, COUNTY OF RIVERSIDE, STATE OF CALIFORNIA

# RECORD OF SURVEY

NESTE, BRUDIN & STONE, INCORPORATED.....CIVIL ENGINEERS

AUGUST, 1982

RS 72/11



DETAIL "A"  
SEE SHEET 3



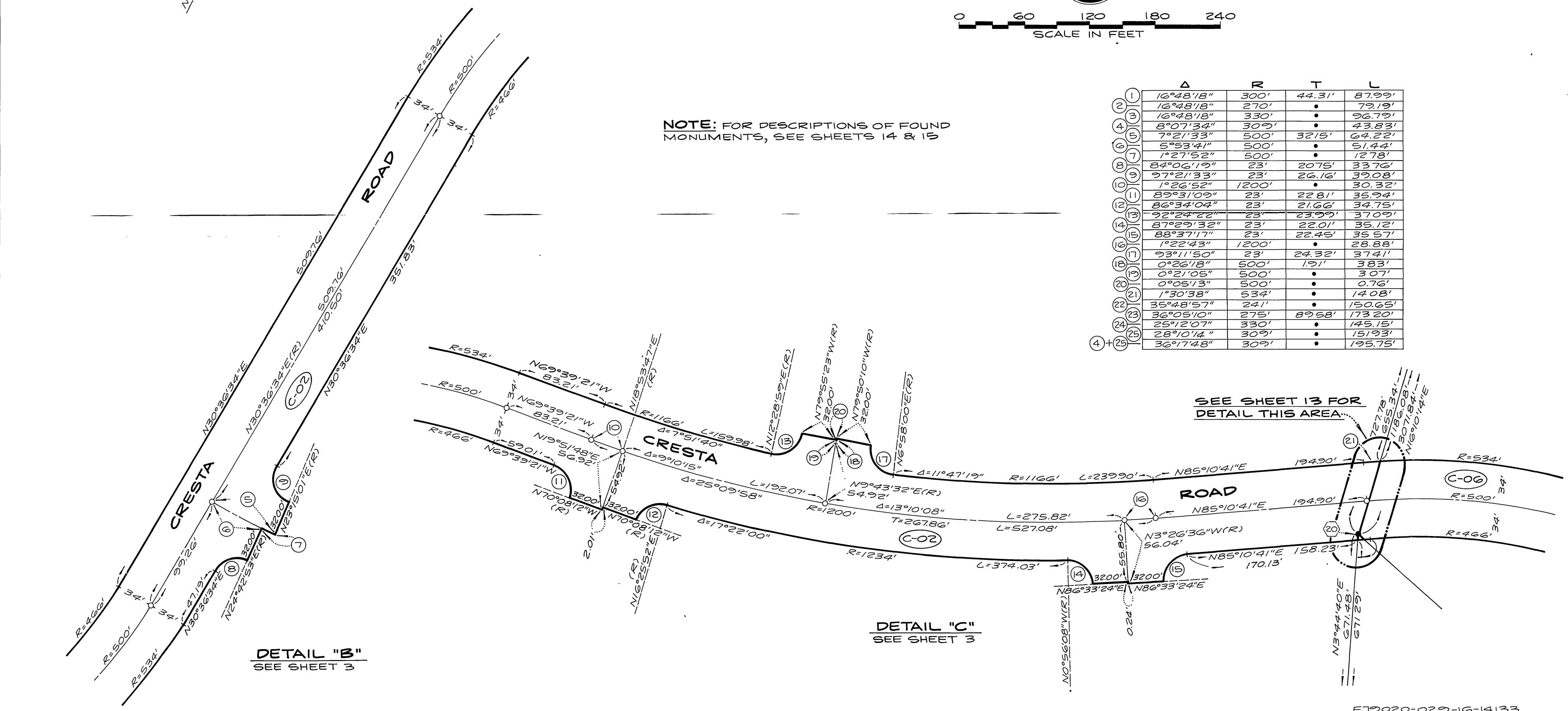
SCALE 1" = 60'

SCALE IN FEET

NOTE: FOR DESCRIPTIONS OF FOUND MONUMENTS, SEE SHEETS 14 & 15

	Δ	R	T	L
(1)	16°48'18"	300'	44.31'	87.99'
(2)	16°48'18"	270'	•	79.19'
(3)	16°48'18"	330'	•	96.79'
(4)	8°07'34"	309'	•	43.83'
(5)	7°21'33"	500'	3215'	64.22'
(6)	5°53'41"	500'	•	51.44'
(7)	1°27'52"	500'	•	12.78'
(8)	84°06'19"	23'	2075'	33.76'
(9)	97°21'33"	23'	26.16'	39.08'
(10)	1°26'52"	1200'	•	30.32'
(11)	89°31'09"	23'	22.81'	35.94'
(12)	86°34'04"	23'	21.66'	34.75'
(13)	92°24'22"	23'	23.99'	37.09'
(14)	87°29'32"	23'	22.01'	35.12'
(15)	88°37'17"	23'	22.45'	35.57'
(16)	1°22'43"	1200'	•	28.88'
(17)	93°11'50"	23'	24.32'	37.41'
(18)	0°26'18"	500'	1.91'	3.83'
(19)	0°21'05"	500'	•	3.07'
(20)	0°05'13"	500'	•	0.76'
(21)	1°30'38"	534'	•	14.08'
(22)	35°48'57"	241'	•	150.65'
(23)	36°05'10"	275'	89.58'	173.20'
(24)	25°12'07"	330'	•	145.15'
(25)	28°10'14"	309'	•	151.93'
(4+25)	36°17'48"	309'	•	195.75'

SEE SHEET 13 FOR  
DETAIL THIS AREA



DETAIL "B"  
SEE SHEET 3

DETAIL "C"  
SEE SHEET 3

E79020-029-16-14133

RS 72/11

RS 72/11

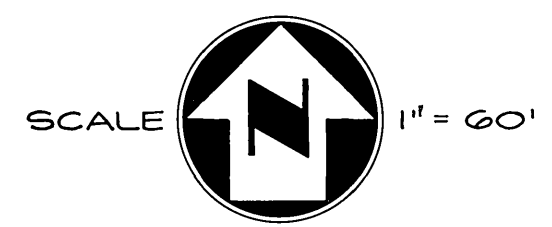
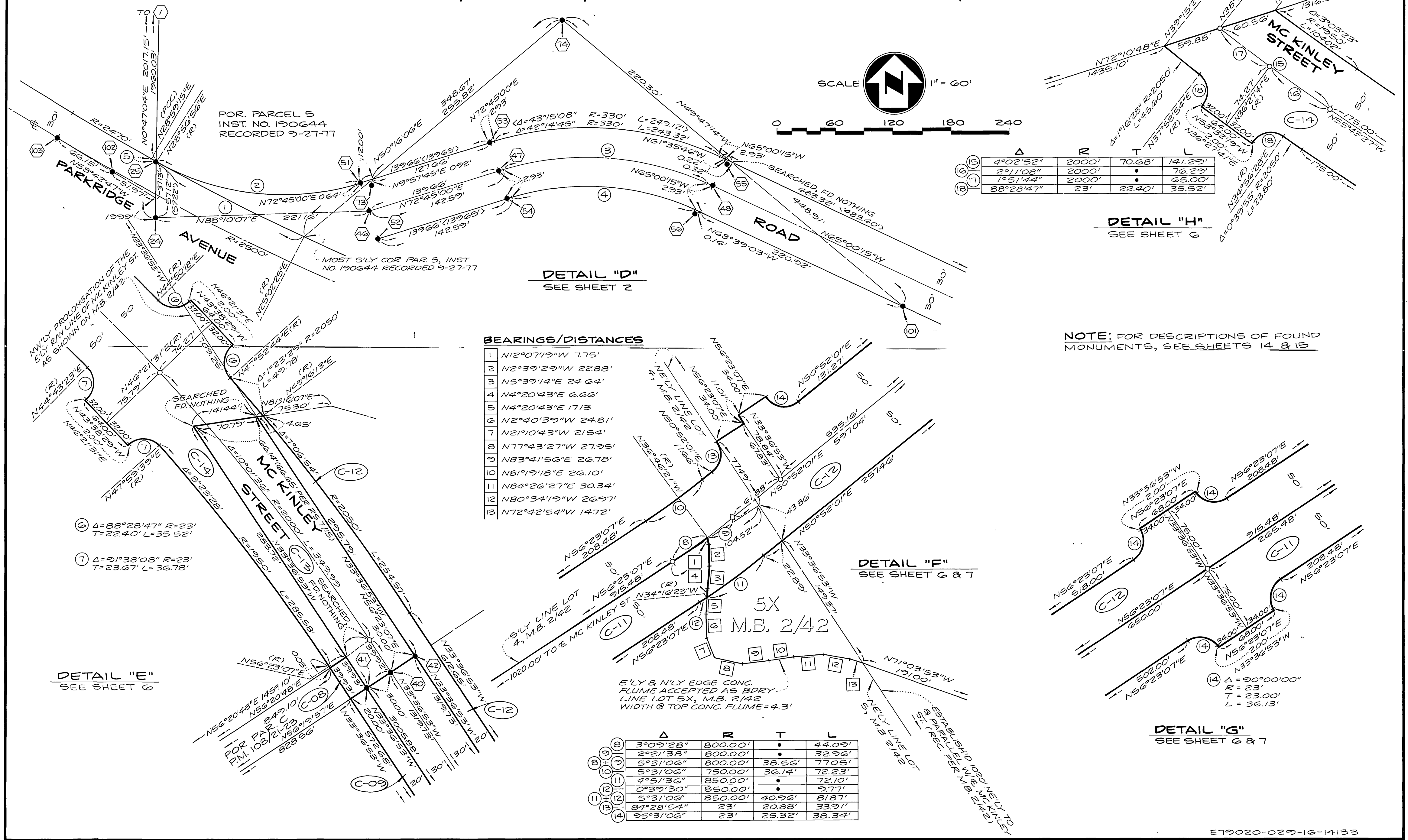
IN THE CITY OF CORONA, COUNTY OF RIVERSIDE, STATE OF CALIFORNIA

# RECORD OF SURVEY

NESTE, BRUDIN & STONE, INCORPORATED.....CIVIL ENGINEERS

AUGUST, 1982

	Δ	R	T	L
1	3°56'36"	2470'	•	170.00'
2	46°11'56"	270'	•	217.71'
3	42°14'45"	300'	115.90'	221.20'
4	42°14'45"	270'	•	199.08'
5	43°15'08"	270'	•	203.82'
6	0°02'19"	270'	•	0.18'



	Δ	R	T	L
5	4°02'52"	2000'	70.68'	141.29'
6	2°11'08"	2000'	•	76.29'
7	1°51'44"	2000'	•	65.00'
8	88°28'47"	23'	22.40'	35.52'

DETAIL "D"  
SEE SHEET 2

DETAIL "H"  
SEE SHEET 6

NOTE: FOR DESCRIPTIONS OF FOUND MONUMENTS, SEE SHEETS 14 & 15

BEARINGS/DISTANCES

- 1 N12°07'19"W 7.75'
- 2 N2°39'29"W 22.88'
- 3 N5°39'14"E 24.64'
- 4 N4°20'43"E 6.66'
- 5 N4°20'43"E 17.13'
- 6 N2°40'39"W 24.81'
- 7 N2°10'43"W 21.54'
- 8 N77°43'27"W 27.95'
- 9 N83°41'56"E 26.78'
- 10 N81°19'18"E 26.10'
- 11 N84°26'27"E 30.34'
- 12 N80°34'19"W 26.97'
- 13 N72°42'54"W 14.72'

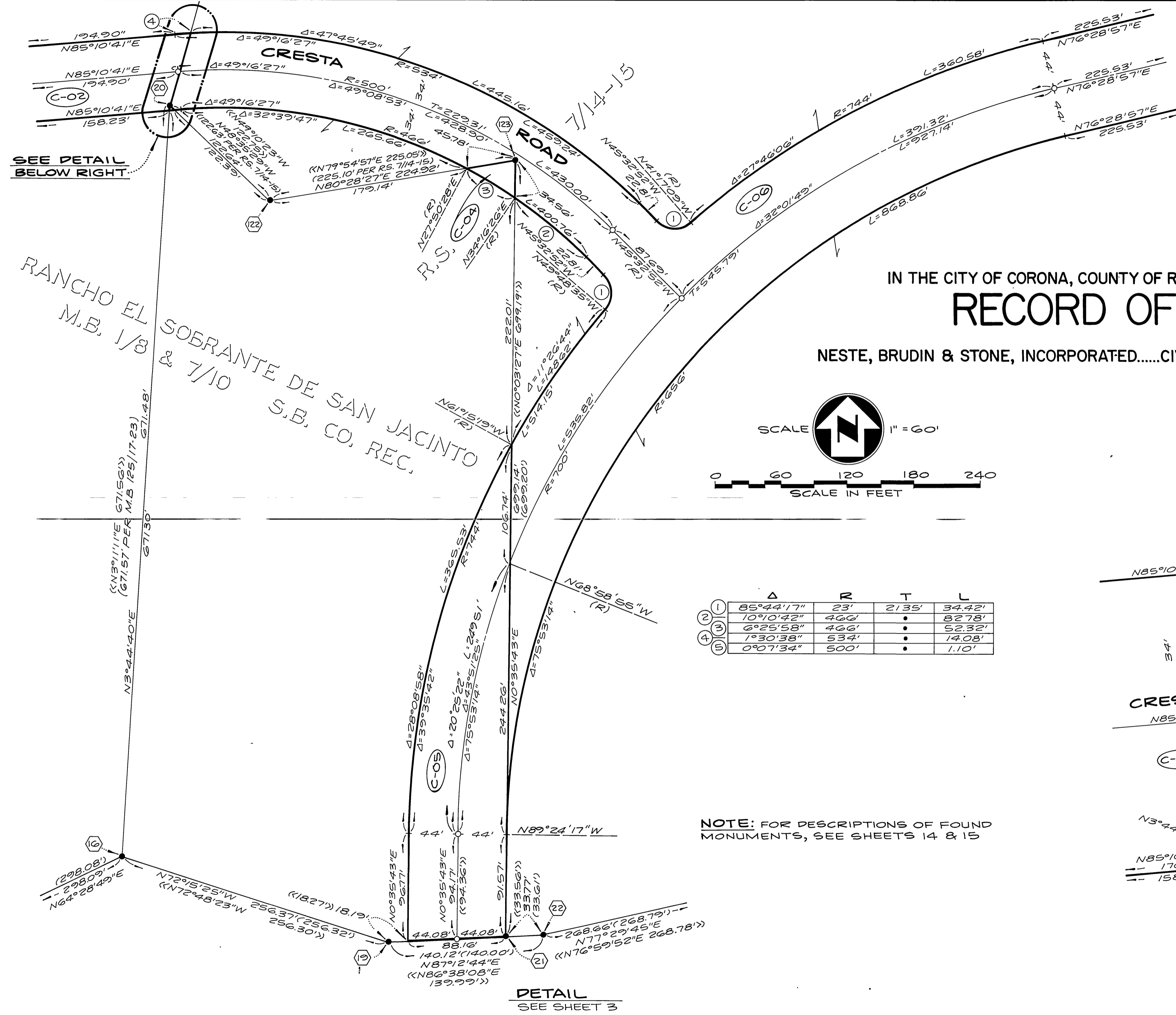
DETAIL "F"  
SEE SHEET 6 & 7

DETAIL "E"  
SEE SHEET 6

DETAIL "G"  
SEE SHEET 6 & 7

	Δ	R	T	L
9	3°09'28"	800.00'	•	44.09'
10	2°21'38"	800.00'	•	32.96'
11	5°31'06"	800.00'	38.56'	77.05'
12	5°31'06"	750.00'	36.14'	72.23'
13	4°51'36"	850.00'	•	72.10'
14	0°39'30"	850.00'	•	9.77'
15	5°31'06"	850.00'	40.96'	81.87'
16	84°28'54"	23'	20.88'	33.91'
17	95°31'06"	23'	25.32'	38.34'





SEE DETAIL BELOW RIGHT

RANCHO EL SOBRANTE DE SAN JACINTO  
 M.B. 1/8 & 7/10  
 S.B. CO. REC.

IN THE CITY OF CORONA, COUNTY OF RIVERSIDE, STATE OF CALIFORNIA

# RECORD OF SURVEY

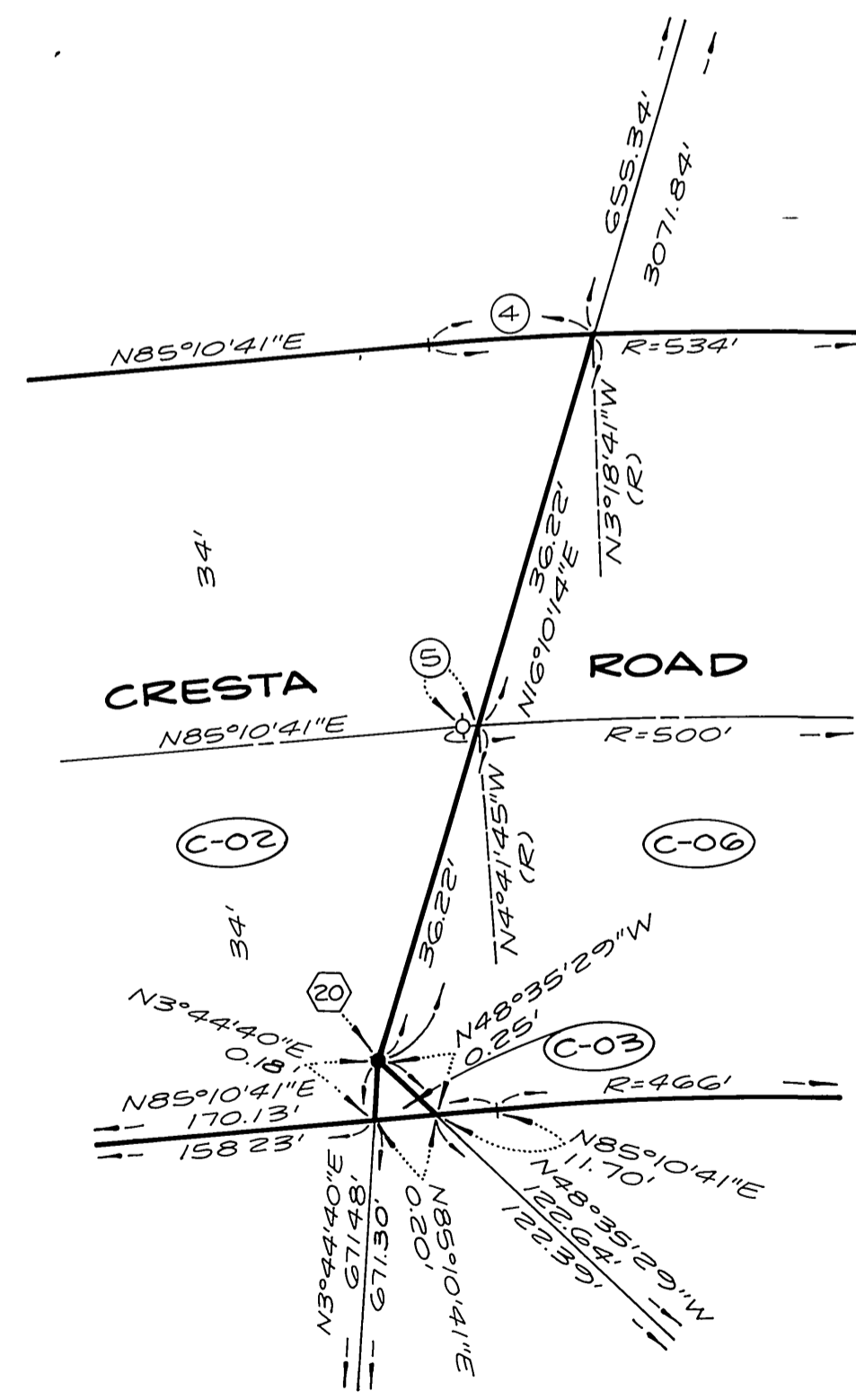
NESTE, BRUDIN & STONE, INCORPORATED.....CIVIL ENGINEERS

AUGUST, 1982



	Δ	R	T	L
(1)	85°44'17"	23'	2135'	34.42'
(2)	10°10'42"	406'	•	8278'
(3)	6°25'58"	406'	•	52.32'
(4)	1°30'38"	534'	•	14.08'
(5)	0°07'34"	500'	•	1.10'

NOTE: FOR DESCRIPTIONS OF FOUND MONUMENTS, SEE SHEETS 14 & 15



DETAIL NO SCALE

DETAIL SEE SHEET 3

COPY

72/14

IN THE CITY OF CORONA, COUNTY OF RIVERSIDE, STATE OF CALIFORNIA

RECORD OF SURVEY

NESTE, BRUDIN & STONE, INCORPORATED.....CIVIL ENGINEERS

AUGUST, 1982

NOTE: (\*) INDICATES NUMBER OF FOUND MONUMENT ON MAP SHEET.

FOUND MONUMENT DESCRIPTIONS:

- 1 2" I.D. I.P. UP 5-1/2" W/TAG L.S. 3118 PER M.B. 125/17-23 -- ACCEPTED AS N.W. CORNER. PAR. 1, R.S. 35/61 AND FOUND PER P.M. 108/21-23.
- 2 2" I.D. I.P. DN. 0.1' W/TAG L.S. 3069 PER M.B. 125/17-23 -- ACCEPTED AS N.E. CORNER PAR. 1, R.S. 35/61 AND FOUND PER P.M. 108/21-23.
- 3 2" I.D. I.P. UP 0.1' W/TAG L.S. 3069 PER M.B. 125/17-23 -- ACCEPTED AS S.E. CORNER PAR. 1, R.S. 35/61.
- 4 2" I.D. I.P. UP 0.1' W/TAG L.S. 3069 PER M.B. 125/17-23 -- ACCEPTED AS ANGLE PT. IN PAR. 1, R.S. 35/61.
- 5 2" I.D. I.P. UP 0.1' W/TAG L.S. 3069 PER M.B. 125/17-23 -- ACCEPTED AS ANGLE PT. IN PAR. 1, R.S. 35/61.
- 6 2" I.D. I.P. UP 0.2' W/TAG L.S. 3069 PER M.B. 125/17-23 -- ACCEPTED AS S.W. CORNER PAR. 1, R.S. 35/61.
- 7 3/4" I.D. I.P. UP 0.3' W/TAG R.C.E. 862 NO REF. -- ACCEPTED AS PT. ON RANCHO LINE.
- 8 3/4" I.D. I.P. FLUSH W/TAG L.S. 3118 PER M.B. 125/17-23.
- 9 2" x 2" AND TACK FLUSH PER R.S. 47/17 -- ACCEPTED AS PT. ON RANCHO LINE.
- 10 2" I.D. I.P. FLUSH W/TAG L.S. 3118 PER M.B. 125/17-23 -- ACCEPTED AS MOST N'LY CORNER TR. NO. 2936, M.B. 50/51-55 AND FOUND PER P.M. 108/21-23.
- 11 2" I.D. I.P. FLUSH NO TAG PER R.S. 47/17 AND P.M. 108/21-23 FOR CORNER PAR. 1, R.S. 47/17 & PT. ON RANCHO LINE -- SET TAG R.C.E. 8613.
- 12 2" I.D. I.P. FLUSH NO TAG PER R.S. 47/17 FOR CORNER PAR. 1, R.S. 47/17 & PT. ON RANCHO LINE -- SET TAG R.C.E. 8613 AND FOUND PER P.M. 108/21-23.
- 13 8" x 8" STONE MONUMENT SCRIBED M4 FLUSH PER R.S. 47/17 AND R.S. 58/14-36 FOR COR. PAR. 1, R.S. 47/17 & S.E. CORNER LOT 20, M.B. 6/70 AND FOUND PER P.M. 108/21-23.
- 14 LEAD, TACK AND TAG R.C.E. 9954 FLUSH IN LARGE BOULDER ON LINE NO REF.
- 15 2" I.D. I.P. UP 0.5' W/TAG R.C.E. 11188 ON LINE NO REF.
- 16 2" I.D. I.P. UP 0.1' W/TAG L.S. 3069 PER M.B. 125/17-23 -- ACCEPTED AS ANGLE POINT IN N'LY R/W LINE HWY. 91 AND FOUND PER P.M. 108/21-23.
- 17 2" I.D. I.P. UP 0.1' W/TAG L.S. 3069 PER M.B. 125/17-23 -- ACCEPTED AS ANGLE POINT IN N'LY R/W LINE HWY. 91.
- 18 2" I.D. I.P. UP 0.1' W/TAG L.S. 3069 PER M.B. 125/17-23 -- ACCEPTED AS ANGLE POINT IN N'LY R/W LINE HWY. 91.
- 19 2" x 2" AND CUP TACK DN. 1.3' PER P.M. 108/21-23 -- ACCEPTED AS ANGLE POINT IN N'LY R/W LINE HWY. 91 -- SET TAG R.C.E. 8613. (DID NOT FIND I.P. PER P.M. 108/21-23)
- 20 2" I.D. I.P. FLUSH W/TAG L.S. 3118 PER R.S. 7/14-15 & M.B. 125/17-23 AND FOUND PER P.M. 108/21-23.
- 21 BATHEY STAKE AND CAP DN. 0.1' PER STATE OF CALIFORNIA DIVISION OF HIGHWAYS MONUMENTATION MAP NO. 440055 AND FOUND PER P.M. 108/21-23.
- 22 NAIL IN CONC. BASE 2" PIPE FENCE POST FLUSH PER P.M. 108/21-23 -- ACCEPTED AS ANGLE POINT IN N'LY R/W LINE HWY. 91. (DID NOT FIND SPIKE, WASHER AND TAG L.S. 3419 PER P.M. 108/21-23)
- 23 2-3/8" O.D. I.P. DN. 5" W/TAG L.S. 3069 PER P.M. 89/53 & M.B. 125/17-23 -- ACCEPTED AS S.E. CORNER LOT 73, TR. NO. 2936, M.B. 50/51-55 AND FOUND PER P.M. 108/21-23.

- 24 1-1/4" I.D. I.P. DN. 30" NO TAG PER R.S. 35/61, M.B. 47/87-90 & M.B. 125/17-23 -- SET TAG R.C.E. 8613.
- 25 2" I.D. I.P. DN. 0.3' W/TAG L.S. 3069 PER M.B. 125/17-23 -- ACCEPTED AS S.W. CORNER PAR. 5, INST. NO. 190644 RECORDED SEPT. 27, 1977 & PT. ON NE'LY R/W LINE PARKRIDGE AVE.
- 26 1" x 2" AND CUP TACK DN. 0.4' NO REF -- ACCEPTED AS ANGLE POINT IN N'LY R/W LINE HWY. 91. (DID NOT FIND 2" I.P. W/TAG L.S. 3419 PER P.M. 108/21-23)
- 27 2" I.D. I.P. FLUSH W/TAG L.S. 3419 PER P.M. 108/21-23 -- ACCEPTED AS ANGLE POINT IN N'LY R/W LINE HWY. 91.
- 28 2" I.D. I.P. DN. 0.3' W/TAG L.S. 3419 PER P.M. 108/21-23 -- ACCEPTED AS ANGLE POINT IN N'LY R/W LINE HWY. 91.
- 29 2" I.D. I.P. FLUSH W/TAG L.S. 3419 NO REF -- ACCEPTED AS POINT ON N'LY R/W LINE HWY. 91.
- 30 2" I.D. I.P. DN. 0.3' W/TAG L.S. 3419 PER P.M. 108/21-23 -- ACCEPTED AS ANGLE POINT IN N'LY R/W LINE HWY. 91.
- 31 2" I.D. I.P. DN. 0.2' W/TAG L.S. 3419 PER P.M. 108/21-23 -- ACCEPTED AS ANGLE POINT IN N'LY R/W LINE HWY. 91.
- 32 2" I.D. I.P. DN. 0.3' W/TAG L.S. 3419 PER P.M. 108/21-23 -- ACCEPTED AS ANGLE POINT IN N'LY R/W LINE HWY. 91.
- 33 BATHEY STAKE AND CAP UP 0.1' PER STATE OF CALIFORNIA DIVISION OF HIGHWAYS MONUMENTATION MAP 440061 AND PER P.M. 108/21-23.
- 34 BATHEY STAKE AND CAP UP 0.3' PER STATE OF CALIFORNIA DIVISION OF HIGHWAYS MONUMENTATION MAP NO. 440062.
- 35 3/4" I.D. I.P. DN. 5" NO TAG PER R.S. 15/21, R.S. 15/22, R.S. 36/75, M.B. 109/95-96 AND P.M. 83/10-12.
- 36 2" O.D. BRASS MONUMENT STAMPED CENTERLINE BUCH 544+50.00 P.O.T. CENTERLINE IMP. 544+49.95 P.O.T. PER CALIFORNIA DIVISION OF HIGHWAYS MONUMENTATION MAP NO. 440071, M.B. 109/95-96 AND P.M. 83/10-12 (FD. IN BRIDGE DECK)
- 37 2" O.D. BRASS MONUMENT IN WELL STAMPED 486+57.51 CENTERLINE IMP. P.O.T. = 486+57.51 CENTERLINE MC KINLEY PER CALIFORNIA DIVISION OF HIGHWAYS MONUMENTATION MAP NO. 440063 & R.S. 42/59.
- 38 2" O.D. BRASS MONUMENT IN WELL STAMPED 482+62.08 P.O.T. CENTERLINE MC KINLEY PER CALIFORNIA DIVISION OF HIGHWAYS MONUMENTATION MAP NO. 440063, PER R.S. 44/97 AND PER P.M. 108/21-23.
- 39 BATHEY STAKE AND CAP DN. 0.2' PER CALIFORNIA DIVISION OF HIGHWAYS MONUMENTATION MAP NO. 440065.
- 40 2" I.D. I.P. DN. 0.1' W/TAG L.S. 3419 PER P.M. 108/21-23 -- ACCEPTED AS PT. ON MC KINLEY ST.
- 41 2" I.D. I.P. FLUSH W/TAG L.S. 3419 PER P.M. 108/21-23 -- ACCEPTED AS MOST N'LY CORNER LOT 2, M.B. 2/42.
- 42 1" x 2" DN. 0.2' NO TAG NO REF -- ACCEPTED AS MOST W'LY CORNER LOT 1, M.B. 2/42.
- 43 3/4" I.D. I.P. DN. 1.0' W/TAG L.S. 3163 NO REF -- ACCEPTED AS B.C.
- 44 3/4" I.D. I.P. DN. 0.3' W/TAG L.S. 3163 NO REF -- ACCEPTED AS E.C.
- 45 3/4" I.D. I.P. DN. 0.1' W/TAG L.S. 3163 NO REF -- ACCEPTED AS B.C. N'LY R/W LINE HWY. 91.
- 46 1-1/4" O.D. I.P. FLUSH W/PLASTIC PLUG STAMPED L.S. 3163 NO REF -- ACCEPTED AS PT. ON CENTERLINE CRESTA ROAD.

- 47 1-1/4" O.D. I.P. DN. 2" W/NAIL NO TAG NO REF -- SET TAG R.C.E. 8613 -- ACCEPTED AS B.C. CENTERLINE CRESTA ROAD.
- 48 1-1/4" O.D. I.P. DN. 2" W/TAG L.S. 3118 PER M.B. 125/17-23 -- ACCEPTED AS E.C. CENTERLINE CRESTA ROAD.
- 49 1-1/4" O.D. I.P. DN. 2" W/TAG L.S. 3118 PER M.B. 125/17-23 -- ACCEPTED AS B.C. CENTERLINE CRESTA ROAD.
- 50 NAIL AND TAG L.S. 3069 FLUSH PER M.B. 125/17-23 FOR E.C. CENTERLINE CRESTA ROAD.
- 51 1-1/4" O.D. I.P. FLUSH W/TAG L.S. 3163 PER M.B. 125/17-23 -- ACCEPTED AS E.C. N'LY R/W LINE CRESTA ROAD.
- 52 1-1/4" O.D. I.P. DN. 1" NO TAG NO REF -- SET TAG R.C.E. 8613 -- ACCEPTED AS PT. ON S'LY R/W LINE CRESTA ROAD.
- 53 1-1/4" O.D. I.P. FLUSH W/TAG L.S. 3163 NO REF -- ACCEPTED AS B.C. N'LY R/W LINE CRESTA ROAD.
- 54 1-1/4" O.D. I.P. FLUSH W/TAG L.S. 3163 NO REF -- ACCEPTED AS B.C. S'LY R/W LINE CRESTA ROAD.
- 55 2-3/8" O.D. I.P. DN. 3" W/TAG L.S. 3069 PER M.B. 125/17-23.
- 56 1-1/4" O.D. I.P. FLUSH W/TAG L.S. 3069 NO REF.
- 57 1-1/4" O.D. I.P. DN. 2" W/TAG (UNREADABLE) PER M.B. 125/17-23 -- ACCEPTED AS CENTERLINE INT. CRESTA ROAD AND TERMINO AVENUE.
- 58 NAIL AND TAG L.S. 3069 FLUSH IN SIDEWALK NO REF -- ACCEPTED AS B.C.
- 59 NAIL AND TAG L.S. 3069 FLUSH IN SIDEWALK NO REF -- ACCEPTED AS E.C.
- 60 NAIL AND TAG L.S. 2933 FLUSH IN SIDEWALK NO REF -- ACCEPTED AS S.E. CORNER LOT 104, TRACT NO. 2670, M.B. 47/87-90.
- 61 2-3/8" O.D. I.P. FLUSH W/TAG L.S. 3069 NO REF -- ACCEPTED AS S.W. CORNER LOT 104, TR. NO. 2670, M.B. 47/87-90.
- 62 1" O.D. I.P. FLUSH W/TAG L.S. 2933 PER M.B. 47/87-90 AND M.B. 125/17-23
- 63 1" O.D. I.P. FLUSH W/TAG L.S. 3069 PER M.B. 125/17-23 -- ACCEPTED AS MOST N'LY CORNER LOT 101, TR. NO. 2670, M.B. 47/87-90.
- 64 1" O.D. I.P. FLUSH W/TAG L.S. 2933 PER TR. NO. 2936, M.B. 50/51-55 AND M.B. 125/17-23.
- 65 1" O.D. I.P. DN. 0.8' W/TAG L.S. 2933 PER TR. NO. 2936, M.B. 50/51-55 AND M.B. 125/17-23.
- 66 1" O.D. I.P. DN. 0.1' NO TAG -- SET TAG RCE 8613 -- ACCEPTED AS MOST N'LY CORNER LOT 147, TR. NO. 2936, M.B. 50/51-55.
- 67 2-3/8" O.D. I.P. DN. 14" W/TAG L.S. 3069 PER M.B. 125/17-23 -- ACCEPTED AS MOST N'LY CORNER LOT 145, TR. NO. 2926, M.B. 50/51-55.
- 68 3/4" I.D. I.P. FLUSH W/TAG L.S. 3118 PER M.B. 125/17-23 -- ACCEPTED AS LOT CORNERS TR. NO. 2936, M.B. 50/51-55.
- 69 2-3/8" O.D. I.P. FLUSH W/TAG L.S. 3069 PER M.B. 125/17-23 -- ACCEPTED AS LOT CORNERS TR. NO. 2936, M.B. 50/51-55.

CONTINUED ON SHEET 15

RS 72/14

RS 72/14

RS 72/14

IN THE CITY OF CORONA, COUNTY OF RIVERSIDE, STATE OF CALIFORNIA

RECORD OF SURVEY

NESTE, BRUDIN & STONE, INCORPORATED.....CIVIL ENGINEERS

AUGUST, 1982

FOUND MONUMENT DESCRIPTIONS: (CONTINUED)

- 70 1"O.D. I.P. DN. 0.3' W/TAG L.S. 2933 PER TR. NO. 2936, M.B. 50/51-55 AND M.B. 125/17-23.
- 71 R.R. SPIKE FLUSH PER M.B. 125/17-23 -- ACCEPTED AS S.W. CORNER LOT 121, TR. NO. 2936, M.B. 50/51-55.
- 72 1-1/4"O.D. I.P. DN. 6" W/TAG L.S. 3118 PER M.B. 125/17-23 -- ACCEPTED AS N.W. CORNER LOT 121, TR. NO. 2936, M.B. 50/51-55.
- 73 2-1/4"O.D. I.P. FLUSH W/TAG L.S. 3069 PER M.B. 125/17-23
- 74 2-1/4"O.D. I.P. FLUSH W/TAG L.S. 3069 PER M.B. 125/17-23 -- ACCEPTED AS ANGLE POINT IN E'LY LINE PAR. 5, INST. NO. 190644 RECORDED SEPT. 27, 1977.
- 75 1"O.D. I.P. DN. 6" W/TAG L.S. 2933 PER TR. NO. 2670, M.B. 47/87-90 AND M.B. 125/17-23.
- 76 1"O.D. I.P. UP 11" W/TAG L.S. 2933 PER TR. NO. 2670, M.B. 47/87-90 AND M.B. 125-17-23.
- 77 1"O.D. I.P. FLUSH W/TAG L.S. 3118 PER M.B. 125/17-23 -- ACCEPTED AS N.E. CORNER LOT 8, TR. NO. 2670, M.B. 47/87-90.
- 78 2-3/8"O.D. I.P. FLUSH W/TAG L.S. 3069 PER M.B. 125/17-23 -- ACCEPTED AS N.E. CORNER LOT 10, TR. NO. 2670, M.B. 47/87-90.
- 79 LEAD & TAG L.S. 3069 IN CONC. BLOCK WALL FOOTING PER M.B. 125/17-23 -- ACCEPTED AS N.E. CORNER LOT 12, TR. NO. 2670, M.B. 47/87-90.
- 80 1"O.D. I.P. DN. 6" W/TAG L.S. 2933 PER TR. NO. 2670, M.B. 47/87-90 & M.B. 125/17-23.
- 81 1"O.D. I.P. DN. 12" W/TAG L.S. 2933 PER TR. NO. 2670, M.B. 47/87-90 & M.B. 125/17-23.
- 82 2-2/8"O.D. I.P. DN. 6" W/TAG L.S. 3069 NO REF -- ACCEPTED AS S.E. CORNER LOT 50, TR. NO. 2670, M.B. 47/87-90.
- 83 2-3/8"O.D. I.P. FLUSH W/TAG L.S. 3069 PER M.B. 125/17-23--ACCEPTED AS S.W. CORNER LOT 51, TR. NO. 2670, M.B. 47/87-90.
- 84 2-3/8"O.D. I.P. DN. 8" W/TAG L.S. 3069 PER M.B. 125/17-23 -- ACCEPTED AS ANGLE PT. IN BDRY. LINE TR. NO. 2670, M.B. 47/87-90.
- 85 3/4" I.D. I.P. FLUSH W/TAG L.S. 3118 PER M.B. 125/17-23 -- ACCEPTED AS LOT CORNER TR. NO. 2670, M.B. 47/87-90.
- 86 2-3/8"O.D. I.P. FLUSH W/TAG L.S. 3069 PER M.B. 125/17-23 -- ACCEPTED AS S.W. CORNER LOT 69, TR. NO. 2936, M.B. 50/51-55.
- 87 1"O.D. I.P. 6" DN. W/TAG L.S. 2933 PER TR. NO. 2936, M.B. 50/51-55, P.M. 89/53 & M.B. 125/17-23.
- 88 2-3/8"O.D. I.P. FLUSH W/TAG L.S. 3419 PER P.M. 108/21-23 -- ACCEPTED AS MOST W'LY CORNER INST. NO. 83246 RECORDED JULY 14, 1975.
- 89 1"O.D. I.P. FLUSH W/TAG R.C.E. 19640 PER P.M. 89/53.
- 90 1"O.D. I.P. FLUSH W/TAG L.S. 2933 PER M.B. 125/17-23 -- ACCEPTED AS MOST N'LY CORNER LOT 54, TR. NO. 2670, M.B. 47/87-90.
- 91 1"O.D. I.P. DN. 3" W/TAG R.C.E. 19640 PER P.M. 89/53 (N73°49'41"W 0.11') (SHOWN AS 2" I.P. ON P.M. 108/21-23).
- 92 1"O.D. I.P. FLUSH W/TAG L.S. 3118 PER M.B. 125/17-23 FOR E.C. S'LY R/W LINE CRESTA ROAD.
- 93 U.S.C. & G.S. BRASS DISK STAMPED "GRAPE 1928" IN CONCRETE -- USED FOR HORIZONTAL CONTROL.
- 94 U.S.C. & G.S. BRASS DISK STAMPED "LINN 1928" IN CONCRETE -- USED FOR HORIZONTAL CONTROL.
- 95 2-3/8"O.D. I.P. FLUSH W/TAG L.S. 3419 PER P.M. 108/21-23 -- ACCEPTED AS ANGLE POINT IN BDRY. LINE INST. NO. 83246 RECORDED JULY 14, 1975 AND ANGLE PT. IN PAR. A, P.M. 108/21-23.
- 96 2-3/8"O.D. I.P. UP 1" W/TAG L.S. 3419 NO REF -- ACCEPTED AS PT. ON BDRY. LINE INST. NO. 83246 RECORDED JULY 14, 1975.
- 97 2"O.D. I.P. UP 4" NO TAG PER P.M. 108/21-23 -- SET TAG R.C.E. 8613 -- ACCEPTED AS ANGLE POINT ON BDRY. LINE INST. NO. 83246 RECORDED JULY 14, 1975.
- 98 2"O.D. I.P. UP 1" NO TAG PER R.S. 47/17 AND P.M. 108/21-23 -- SET TAG R.C.E. 8613 -- ACCEPTED AS ANGLE POINT ON BDRY. LINE INST. NO. 83246 RECORDED JULY 14, 1975.
- 99 2-3/8"O.D. I.P. FLUSH W/TAG L.S. 3419 NO REF -- ACCEPTED AS POINT ON BDRY. LINE INST. NO. 117296 RECORDED SEPT. 5, 1973.
- 100 2-3/8"O.D. I.P. FLUSH W/TAG L.S. 3419 PER P.M. 108/21-23 -- ACCEPTED AS ANGLE POINT ON BDRY. LINE INST. NO. 117296 RECORDED SEPT. 5, 1973.
- 101 2-3/8"O.D. I.P. FLUSH W/TAG L.S. 3069 PER M.B. 125/17-23 -- ACCEPTED AS ANGLE POINT IN BOUNDARY LINE INST. NO. '99016 RECORDED OCT. 6, 1966.
- 102 1-1/8"O.D. (HEAD DIA.) SPIKE DN. 8" PER RIV. CO. SURV. F.B. 793/48.
- 103 N & F FLUSH RIV. CO. SURV. F.B. 793/48 -- ACCEPTED AS B.C. CENTERLINE PARKRIDGE AVENUE.
- 104 1"O.D. I.P. UP 3" NO TAG PER R.S. 44/97 -- SET TAG R.C.E. 8613 AND FOUND PER P.M. 108/21-23.
- 105 1"O.D. I.P. FLUSH W/TAG R.C.E. 862 PER R.S. 44/97 AND P.M. 108/21-23.
- 106 1"O.D. I.P. UP 1" NO TAG PER R.S. 44/97 AND P.M. 108/21-23.
- 107 2-3/8"O.D. I.P. FLUSH W/TAG L.S. 3419 NO REF -- ACCEPTED AS PT. ON W'LY LINE INST. NO. 233777 RECORDED 11/1/79.
- 108 2" I.D. I.P. DN. 12" NO TAG PER STATE OF CALIFORNIA DIVISION OF HIGHWAYS MONUMENTATION MAP NO. 440062 FOR ANGLE PT. IN EASTERLY LINE INST. NO. 51546 RECORDED 5/5/75 AND FOUND PER P.M. 108/21-23.
- 109 3/4" I.D. I.P. FLUSH NO TAG -- ACCEPTED AS ANGLE POINT IN S'LY LINE PAR. 1, R.S. 47/17 -- SET TAG R.C.E. 8613 (FD. PER R.S. 58/14-38 AND PER P.M. 108/21-23).
- 110 2"O.D. I.P. DN. 3" NO TAG PER R.S. 47/17 -- SET TAG R.C.E. 8613.
- 111 2"O.D. I.P. FLUSH W/WOOD PLUG AND TACK NO TAG PER R.S. 47/17 -- SET TAG R.C.E. 8613.
- 112 2"O.D. I.P. W/WOOD PLUG AND TACK NO TAG PER R.S. 58/14-38 -- SET TAG R.C.E. 8613 -- ACCEPTED AS MOST SOUTHERLY CORNER DEED RECORDED FEB. 13, 1935 IN BOOK 218 OF OFFICIAL RECORDS, PAGE 12.
- 113 2"O.D. I.P. DN. 3" NO TAG NO REF -- SET TAG R.C.E. 8613 -- ACCEPTED AS ANGLE POINT IN BDRY. LINE PER DEED RECORDED DEC. 23, 1927 IN BOOK 749 OF DEEDS, PAGE 26.
- 114 2"O.D. I.P. WITH 3" BRASS CAP MARKED "S.C.E. M.L.V. 46B R.C.E. 7211" DOWN 9" PER R.S. 58/14-36.
- 115 2"O.D. I.P. WITH 3" BRASS CAP MARKED "S.C.E. M.L.V. 41" R.C.E. 7211" FLUSH PER R.S. 58/14-36.
- 116 4" X 4" WOOD POST W/NAIL IN TOP UP 20" NO REF.
- 117 1"O.D. I.P. DN. 10" NO TAG NO REF -- SET TAG R.C.E. 8613 -- ACCEPTED AS SW'LY CORNER INST. NO. 45670 RECORDED MARCH 7, 1979.
- 118 1"O.D. I.P. DN. 12" NO TAG NO REF -- SET TAG R.C.E. 8613 -- ACCEPTED AS NW'LY CORNER INST. NO. 45670 RECORDED MARCH 7, 1979.
- 119 1-1/2"O.D. BRASS CAP FLUSH MARKED R.C.E. 8793 PER P.M. 83/10-12.
- 120 2" I.D. I.P. DN. 1.2' NO TAG NO REF -- SET TAG R.C.E. 8613 -- ACCEPTED AS MOST SOUTHERLY CORNER CORNER LOT 1, M.B. 2/42.
- 121 2" I.D. I.P. DN. 0.7' NO TAG PER STATE OF CALIFORNIA DIVISION OF HIGHWAYS MONUMENTATION MAP NO. 440064 -- SET TAG R.C.E. 8613 -- ACCEPTED AS MOST S'LY CORNER LOT 4, M.B. 2/42.
- 122 2" I.D. I.P. FLUSH NO TAG PER R.S. 7/14-15 -- SET TAG R.C.E. 8613 AND FOUND PER P.M. 108/21-23.
- 123 2" I.D. I.P. UP 0.02' NO TAG PER R.S. 7/14-15 & CALIFORNIA DIVISION OF HIGHWAYS MONUMENTATION MAP NO. 440055 -- SET TAG R.C.E. 8613 AND FOUND PER P.M. 108/21-23.
- 124 2-3/8"O.D. I.P. FLUSH W/TAG L.S. 3419 PER P.M. 108/21-23 -- ACCEPTED AS ANGLE PT. IN EASTERLY LINE INST. NO. 51546 RECORDED 5/5/75.
- 125 2"O.D. I.P. DN. 0.1' W/TAG L.S. 3069 PER M.B. 125/17-23.
- 126 2" X 2" & TACK DN. 0.1' NO REF. -- ACCEPTED AS ANGLE POINT IN ORIGINAL N. R/W LINE STATE HWY. PER MONUMENTATION MAP NO. 440054 (204/799 RIV. CO. SURV. FILES)
- 127 2"O.D. I.P. UP 0.1' NO TAG PER M.B. 125/17-23 -- SET TAG R.C.E. 8613 -- ACCEPTED AS ANGLE POINT PER M.B. 125/17-23.
- 128 2" X 2" & TACK DN. 0.1' NO REF. -- ACCEPTED AS ANGLE PT. IN ORIG. N. R/W LINE STATE HWY. PER MONUMENTATION MAP NO. 44054 (204/799 RIV. CO. SURV. FILES)
- 129 REMAINS OF 2" X 2" NO REF. -- ACCEPTED AS ANGLE PT. IN ORIG. N. R/W LINE STATE HWY. PER MONUMENTATION MAP NO. 44054 (204/799 RIV. CO. SURV. FILES)
- 130 2" X 2" TACK FLUSH NO REF -- ACCEPTED AS ANGLE POINT PER M.B. 125/17-23.
- 131 2"O.D. I.P. FLUSH W/TAG L.S. 3069 PER M.B. 125/17-23.
- 132 BATHEY STAKE (CAP MISSING) DN. 0.3' PER M.B. 125/17-23.
- 133 2" X 2" DN. 0.1' PER R.S. 58/14-36.
- 134 1"O.D. I.P. DN. 6" W/TAG L.S. 3069 NO REF -- ACCEPTED AS MOST N'LY CORNER LOT 97, TR. NO. 2670, M.B. 47/87-90.
- 135 1"O.D. I.P. FLUSH W/TAG L.S. 2933 PER M.B. 50/51-55 & M.B. 125/17-23.
- 136 1"O.D. I.P. DN. 6" W/TAG L.S. 2921 PER R.S. 56/52 & M.B. 125/17-23.
- 137 1"O.D. I.P. FLUSH W/TAG L.S. 2933 PER M.B. 47/87-90.

RS 72/15

RS 72/15