

RECORD OF SURVEY

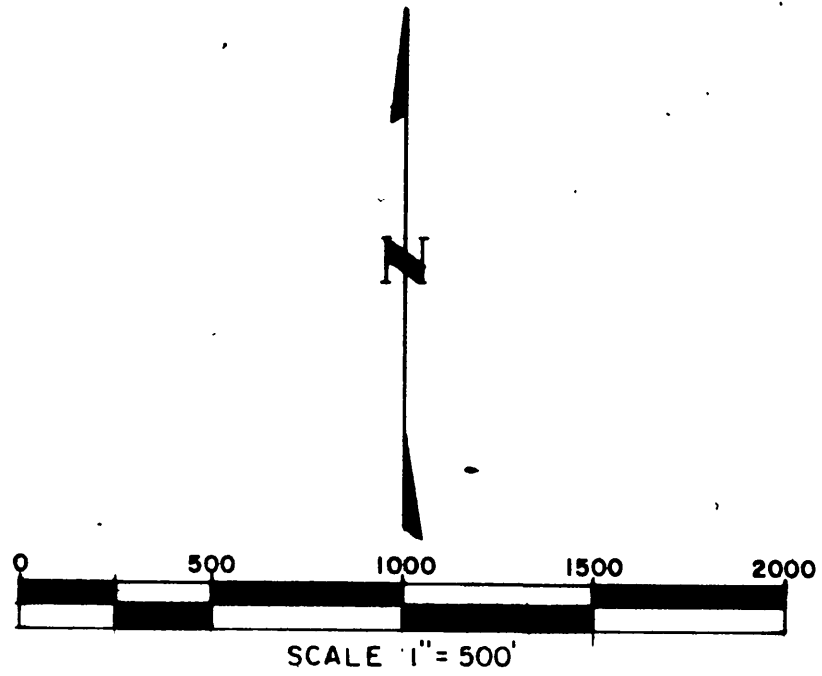
OF A PORTION OF THE METROPOLITAN WATER DISTRICT OF SOUTHERN CALIFORNIA'S RIGHT OF WAY LYING WITHIN BLOCK 16,17,24 AND 25 OF ARLINGTON HEIGHTS AS RECORDED IN MAP BOOK 11, PAGES 20 AND 21, RECORDS OF SAN BERNARDINO COUNTY AND WITHIN SECTIONS 17 AND 20, T.3S., R.5W., S.B.M.

AUGUST 1984

UPPER FEEDER

RONNIE M. WATKINS, L.S. 4339

COPY



M.B. 70/1-2

R.S. 24/13

RECORDERS CERTIFICATE

Filed this 16 day of April, 1985, at 3:00 P.M. in book 72 of Records of Survey at pages 85-90, at the request of the County Surveyor.

Fee 16.00 No. 79427

WILLIAM E. CONERLY, COUNTY RECORDER
BY: *Coris S. Jones*, DEPUTY



SURVEYOR'S STATEMENT

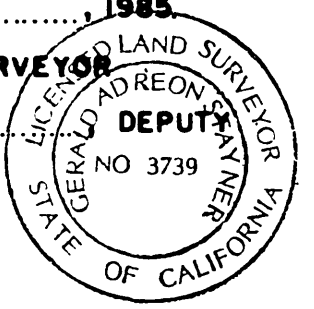
This map correctly represents a survey made by me or under my direction in conformance with the requirements of The Land Surveyor's Act of the request of The Metropolitan Water District of Southern California, owner, in August 1984.

Ronnie M. Watkins
RONNIE M. WATKINS L.S. 4339

COUNTY SURVEYOR'S STATEMENT

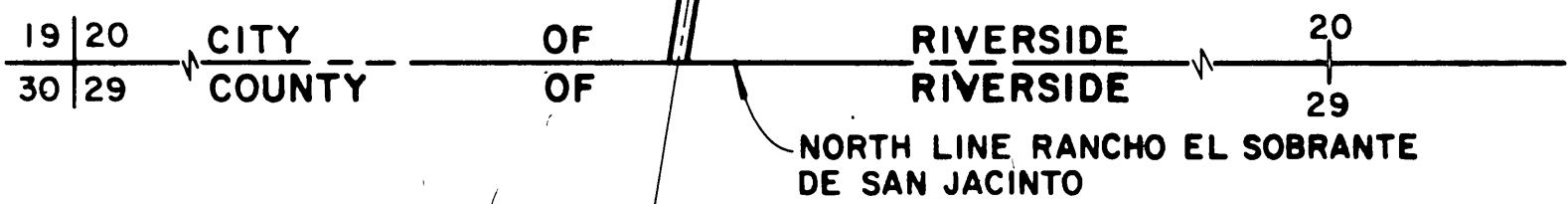
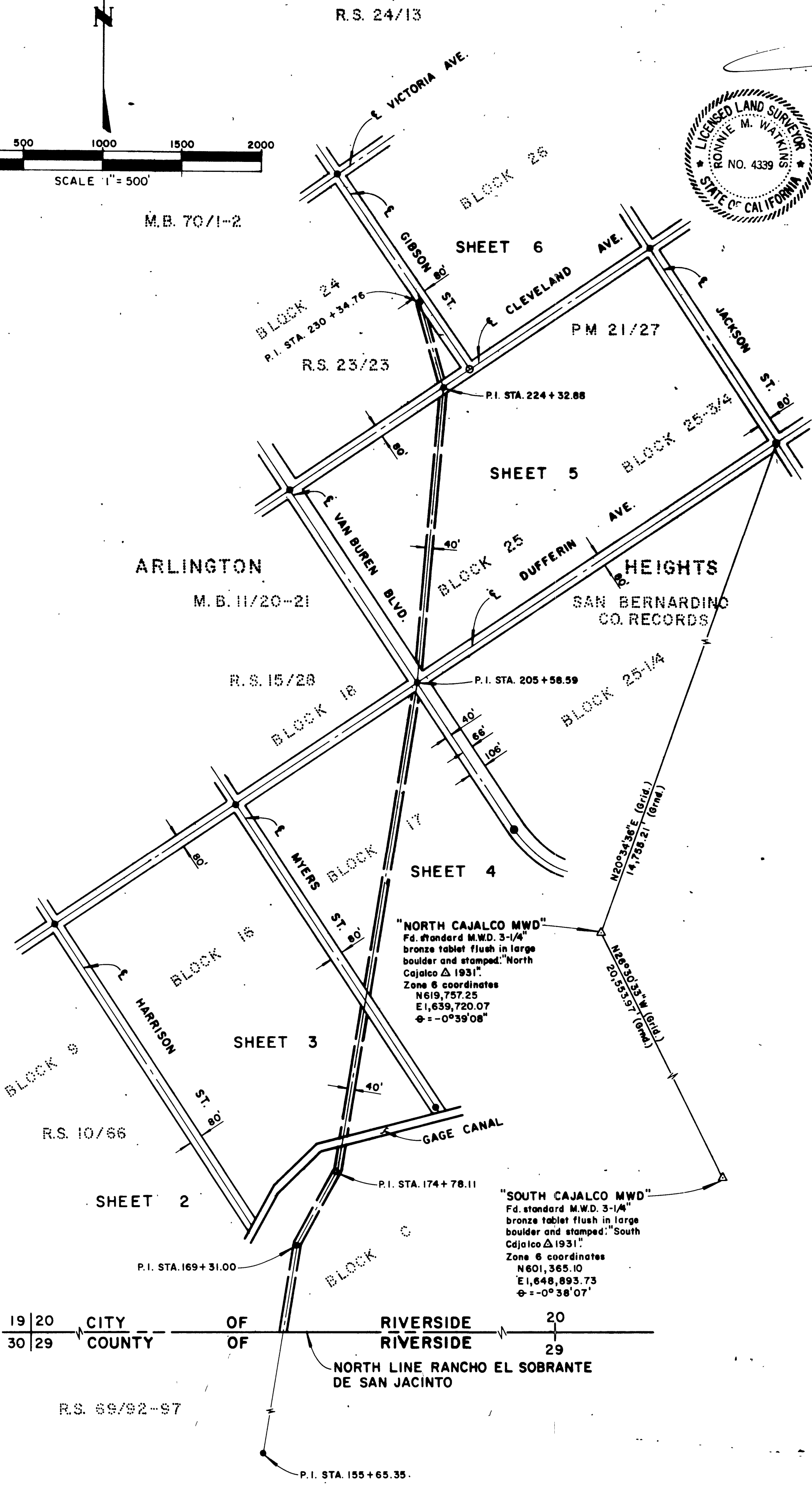
This map has been examined in accordance with section 8766 of The Land Surveyor's Act this 15th day of APRIL, 1985

LeRoy D. Smoot, COUNTY SURVEYOR
BY: *Donald A. Higgins*, DEPUTY
L.S. No. 3739



SURVEYOR'S NOTES

- The basis of bearings for this record of survey is the California Coordinate system, Zone 6, as determined locally by the line between stations "South Cajalco (M.W.D. 1931)" and "North Cajalco (M.W.D. 1931)".
- All bearings shown are grid.
- Distances shown hereon are ground distances. Grid distances may be obtained by multiplying ground distances by 0.99995456 (Average Elev. 950; Average Lat. 33°53').
- Found points, as described, are indicated by closed circles: ●
- Monuments set during the survey unless otherwise noted, are 2" iron pipe with concrete plug and 1-1/4" diameter brass tag stamped "L.S. 4339 M.W.D." set flush with surface and are indicated by open circles: ○
- M.W.D. = The Metropolitan Water District of Southern California.
- Stations shown are for identification only and are not to be used to derive distances between points.
- C.R.F.B. = City of Riverside field book on file with the City Engineer's Office.
- () Indicates record data per Riverside County Map 830A/256-261.
- [] Indicates record data per R.S. 69/92-97.
- (()) Indicates record data per M.B. 11/20-21 S.B. Co.



R.S. 69/92-97

P.I. STA. 155+65.35

AS 72/85

RECORD OF SURVEY

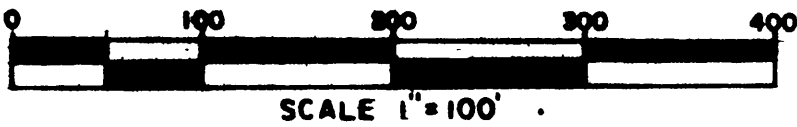
OF A PORTION OF THE METROPOLITAN WATER DISTRICT OF SOUTHERN CALIFORNIA'S RIGHT OF WAY LYING WITHIN BLOCK 16, 17, 24 AND 25 OF ARLINGTON HEIGHTS AS RECORDED IN MAP BOOK 11, PAGES 20 AND 21, RECORDS OF SAN BERNARDINO COUNTY AND WITHIN SECTIONS 17 AND 20, T.3S, R.5W, S.B.M.

AUGUST 1984

UPPER FEEDER

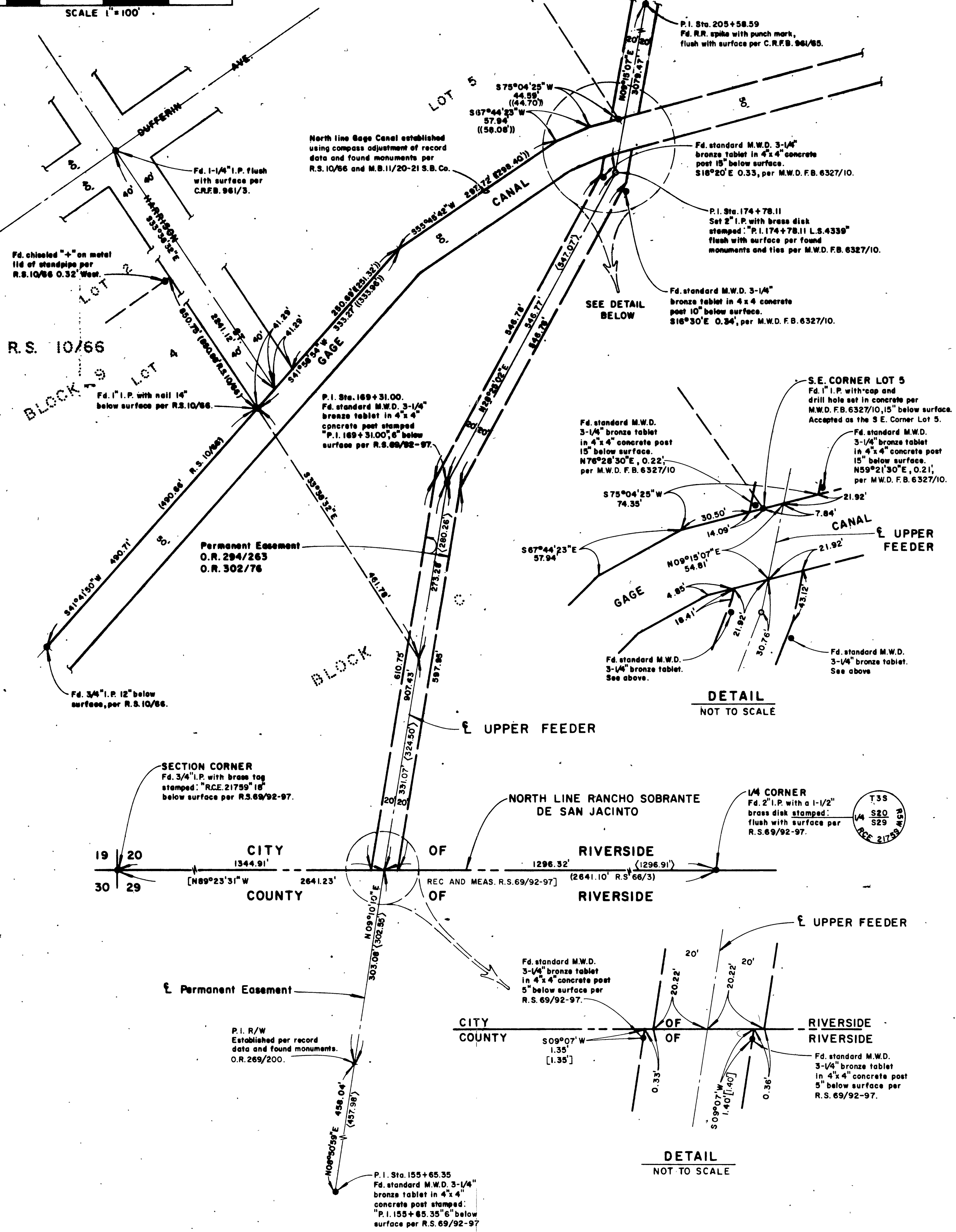
RONNIE M. WATKINS, L.S. 4339

SEE SHEET 3



COPY

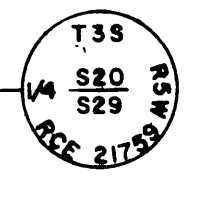
RS 72/86



SEE DETAIL BELOW

DETAIL
NOT TO SCALE

DETAIL
NOT TO SCALE



RECORD OF SURVEY

OF A PORTION OF THE METROPOLITAN WATER DISTRICT OF SOUTHERN CALIFORNIA'S RIGHT OF WAY LYING WITHIN BLOCK 16, 17, 24 AND 25 OF ARLINGTON HEIGHTS AS RECORDED IN MAP BOOK 11, PAGES 20 AND 21, RECORDS OF SAN BERNARDINO COUNTY AND WITHIN SECTIONS 17 AND 20, T.3S., R.5W., S.B.M.

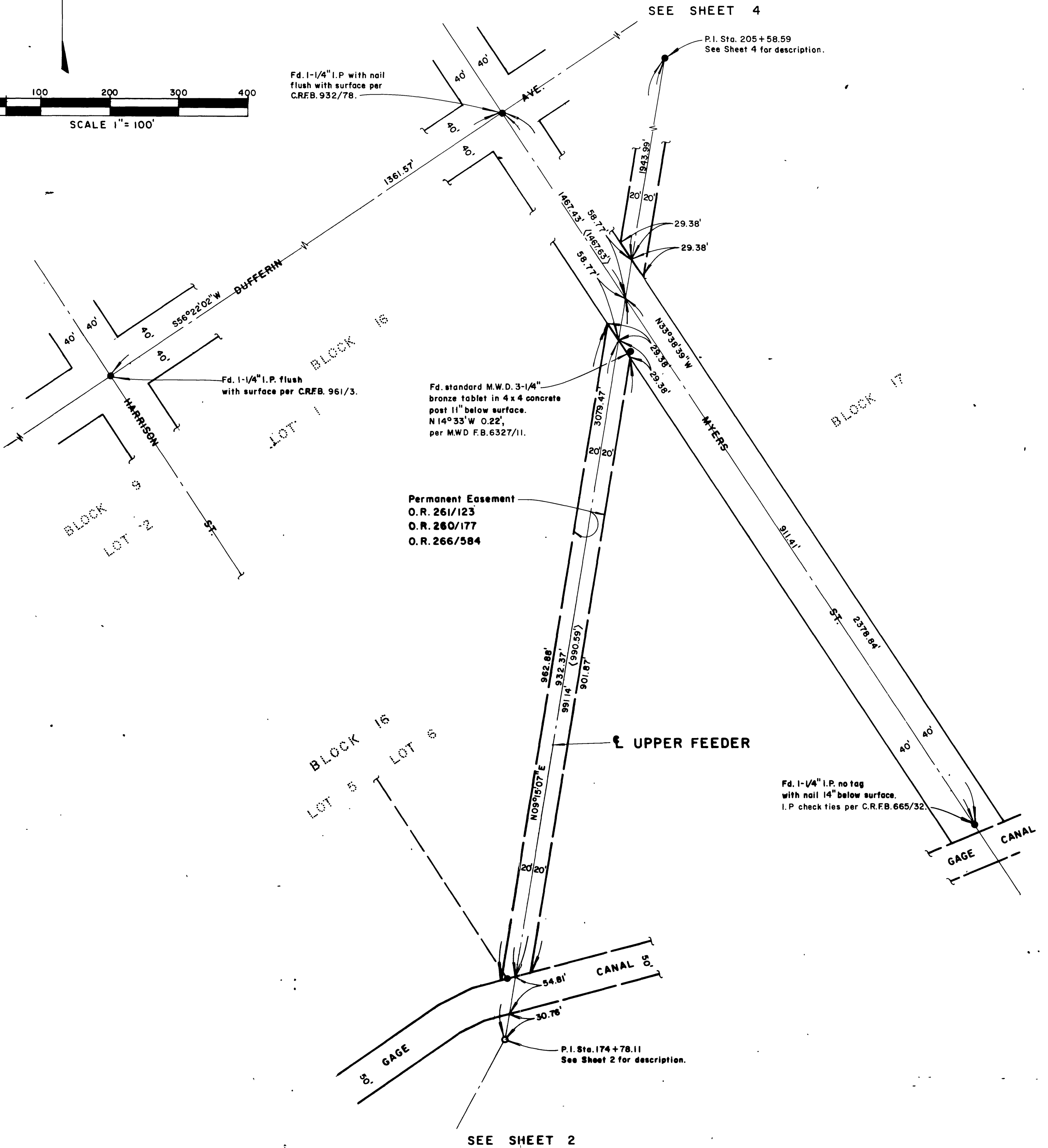
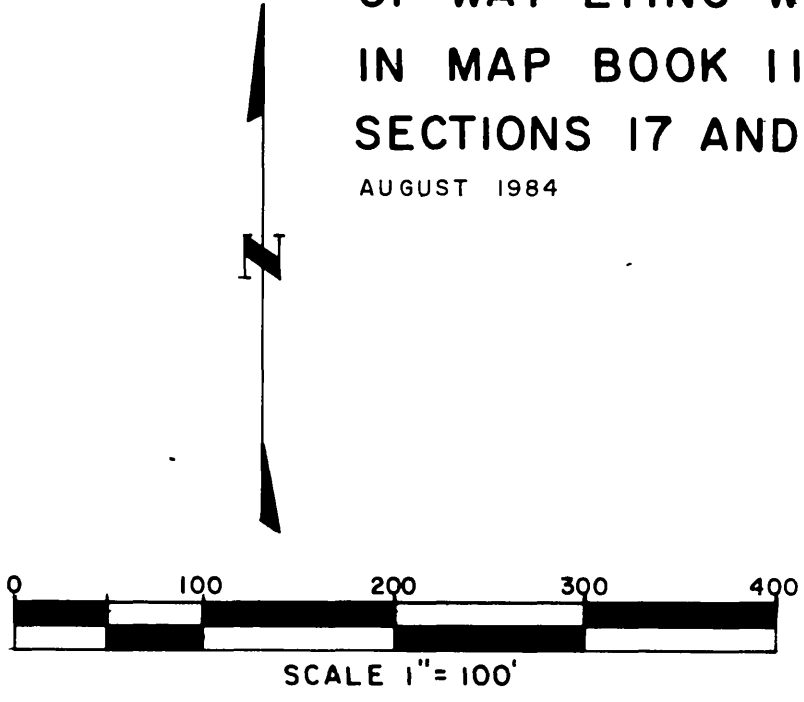
AUGUST 1984

UPPER FEEDER

RONNIE M. WATKINS, L.S. 4339

COPY

RS 72/87



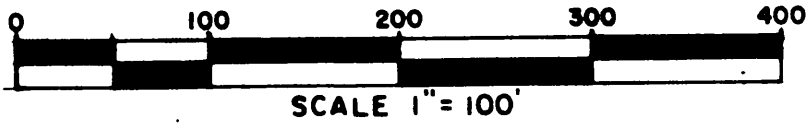
IN THE CITY OF RIVERSIDE, COUNTY OF RIVERSIDE
STATE OF CALIFORNIA

RECORD OF SURVEY

AUGUST 1984

RONNIE M. WATKINS, L.S. 4339

SEE SHEET 5



DETAIL
NOT TO SCALE

P.I. Sta. 174 + 78.11
See Sheet 2
for description.

SEE SHEET 3

Fd. 1-1/4" I.P.
See Sheet 3
for description.

Permanent Easement
 O.R. 260/434
 O.R. 267/170
 O.R. 270/348
 O.R. 259/367
 O.R. 267/511
 O.R. 270/76

Fd. nothing established
from ties per C.R.F.B. 961/66.

Fd. 3/4" I.P. with plastic
plug stamped "City Eng."
8" below surface, per
C.R.F.B. 961/66.

Fd. 2-1/2" bronze tablet
stamped "City of Riverside"
set in concrete in survey
monument well 15" below
surface per P.M. 21/27
and C.R.F.B. 918/41.

P.I. Sta. 224 + 32.88
See Sheet 6
for description.

Fd. spike and tin
flush with surface
per C.R.F.B. 1027/10.

Fd. 3/4" I.P. with plastic
plug not readable flush
with surface per C.R.F.B. 961/65.

P.I. Sta. 205 + 58.59
Fd. R.R. spike with punch
mark flush with surface
per C.R.F.B. 961/65.

P.I. Sta. 205 + 58.59
Fd. R.R. spike with punch mark
flush with surface per C.R.F.B. 961/65.

Fd. 1-1/4" I.P. with
nail flush with surface
per C.R.F.B. 932/78.

CONSTRUCTION
Per C.R.F.B. 961/65-66.

UPPER FEEDER

COPY

RS 72/88

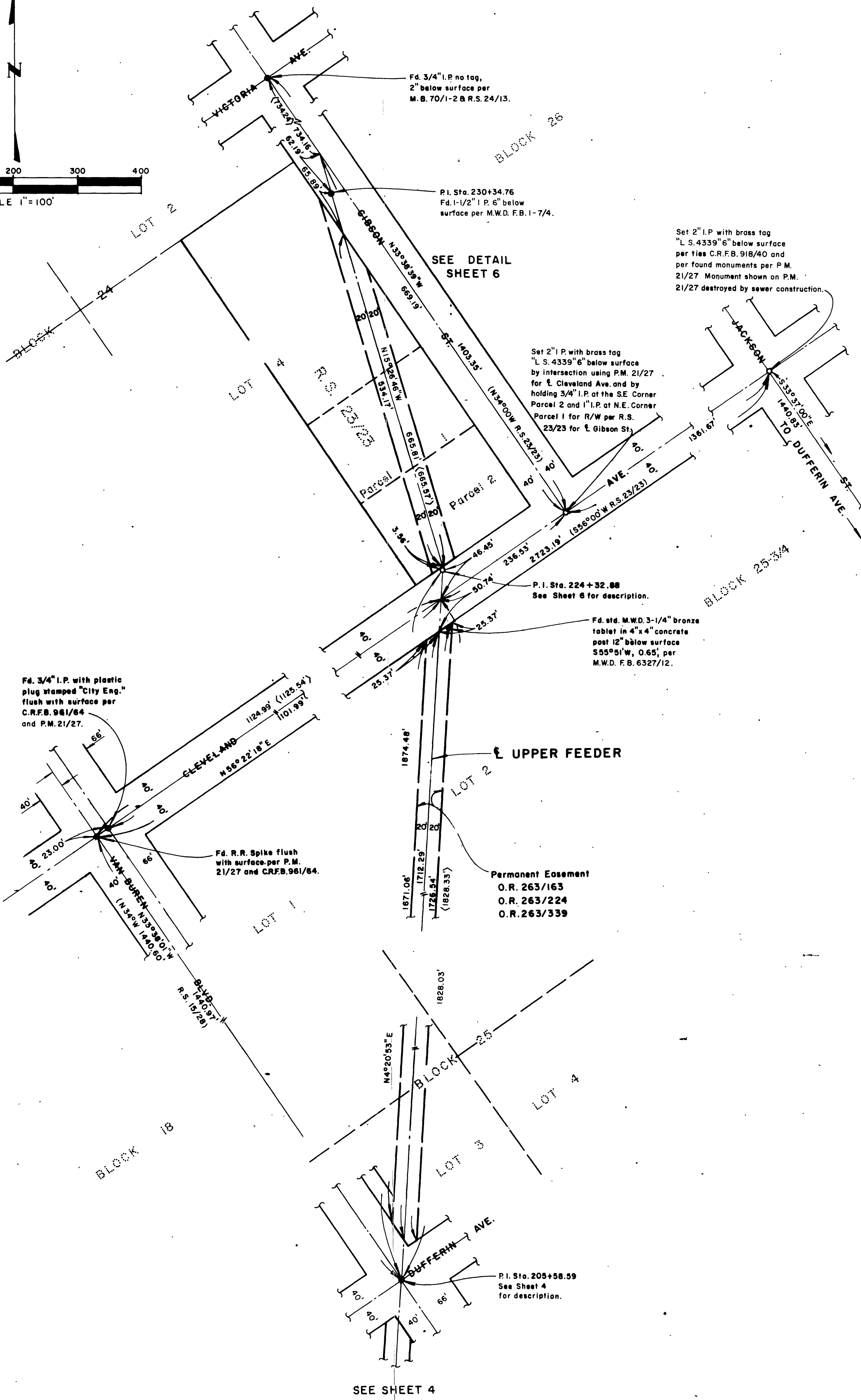
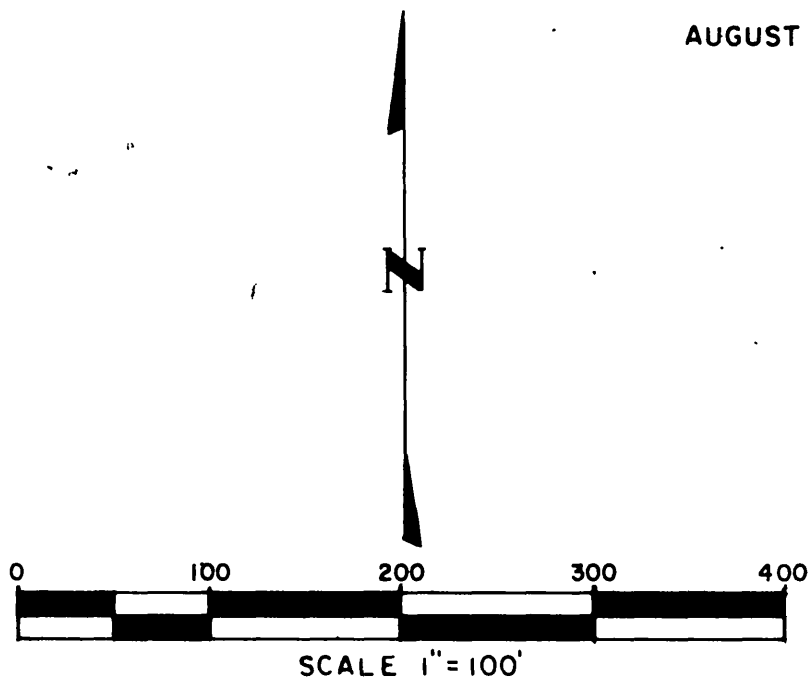
RECORD OF SURVEY

AUGUST 1984

RONNIE M. WATKINS, L.S. 4339

COPY

RS 72/89



Fd. 3/4" I.P. with plastic plug stamped "City Eng." flush with surface per C.R.F.B. 961/64 and P.M. 21/27.

Fd. R.R. Spike flush with surface per P.M. 21/27 and C.R.F.B. 961/64.

Fd. 3/4" I.P. no tag, 2" below surface per M.B. 70/1-2 & R.S. 24/13.

P.I. Sta. 230+34.76
Fd. 1-1/2" I.P. 6" below surface per M.W.D. F.B. 1-7/4.

Set 2" I.P. with brass tag "L.S. 4339" 6" below surface per ties C.R.F.B. 918/40 and per found monuments per P.M. 21/27 Monument shown on P.M. 21/27 destroyed by sewer construction.

Set 2" I.P. with brass tag "L.S. 4339" 6" below surface by intersection using P.M. 21/27 for Cleveland Ave. and by holding 3/4" I.P. at the S.E. Corner Parcel 2 and 1" I.P. at N.E. Corner Parcel 1 for R/W per R.S. 23/23 for Gibson St.

P.I. Sta. 224+32.88
See Sheet 6 for description.

Fd. std. M.W.D. 3-1/4" bronze tablet in 4" x 4" concrete post 12" below surface S55°51'W, 0.65', per M.W.D. F.B. 6327/12.

Permanent Easement
O.R. 263/163
O.R. 263/224
O.R. 263/339

P.I. Sta. 205+58.59
See Sheet 4 for description.

SEE SHEET 4

SEE DETAIL SHEET 6

RECORD OF SURVEY

OF A PORTION OF THE METROPOLITAN WATER DISTRICT OF SOUTHERN CALIFORNIA'S RIGHT OF WAY LYING WITHIN BLOCK 16,17,24 AND 25 OF ARLINGTON HEIGHTS AS RECORDED IN MAP BOOK 11, PAGES 20 AND 21, RECORDS OF SAN BERNARDINO COUNTY AND WITHIN SECTIONS 17 AND 20, T.3S., R.5W., S.B.M.

AUGUST 1984

UPPER FEEDER

RONNIE M. WATKINS, L.S. 4339

COPY

RS 72/90

