

# RECORD OF SURVEY

IN THE CITY OF RIVERSIDE, COUNTY OF RIVERSIDE, CALIFORNIA  
BEING A PORTION OF LOTS 13 AND 14 BLOCK 34 OF LANDS OF RIVERSIDE LAND AND IRRIGATING COMPANY, MAP BOOK I PAGE 70 RECORDS OF SAN BERNARDINO COUNTY, CALIFORNIA. BEING IN RANCHO EL SOBRANTE DE SAN JACINTO.

ADKAN ENGINEERS,

AUGUST 1985

SHEET 1 OF 1 SHEET

**RECORD'S CERTIFICATE**  
Filed this 25th day of FEB., 1986 at 2:00 P.M. in book 75 of Records Survey, of page 58, at the request of the County Surveyor: William E. Conery, County Recorder No. 43374  
Fee \$16.00  
By Santa Regan, Deputy

### SURVEYOR'S STATEMENT

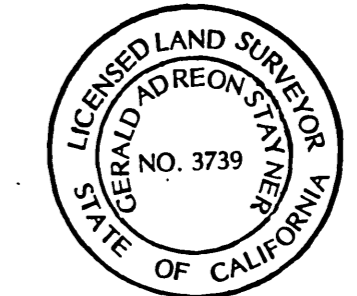
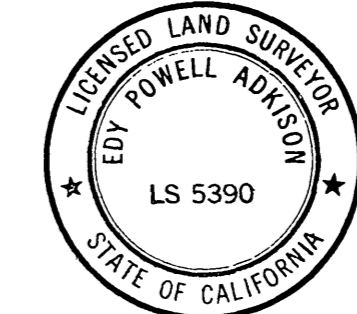
This map correctly represents a survey made by me or under my direction in conformance with the requirements of the Land Surveyor's Act, at the request of Pacific Scene Inc. in August, 1985.

*Edy P. Adkison*  
Edy P. Adkison  
L.S. No. 5390

### COUNTY SURVEYOR'S STATEMENT

This map has been examined in accordance with Section 8766 of the Land Surveyor's Act this 25th day of FEB., 1986.

*Le Roy D. Smart*  
Le Roy D. Smart,  
County Surveyor  
By *LeRoy D. Smart*, Deputy  
L.S. 3739



### BASIS OF BEARINGS

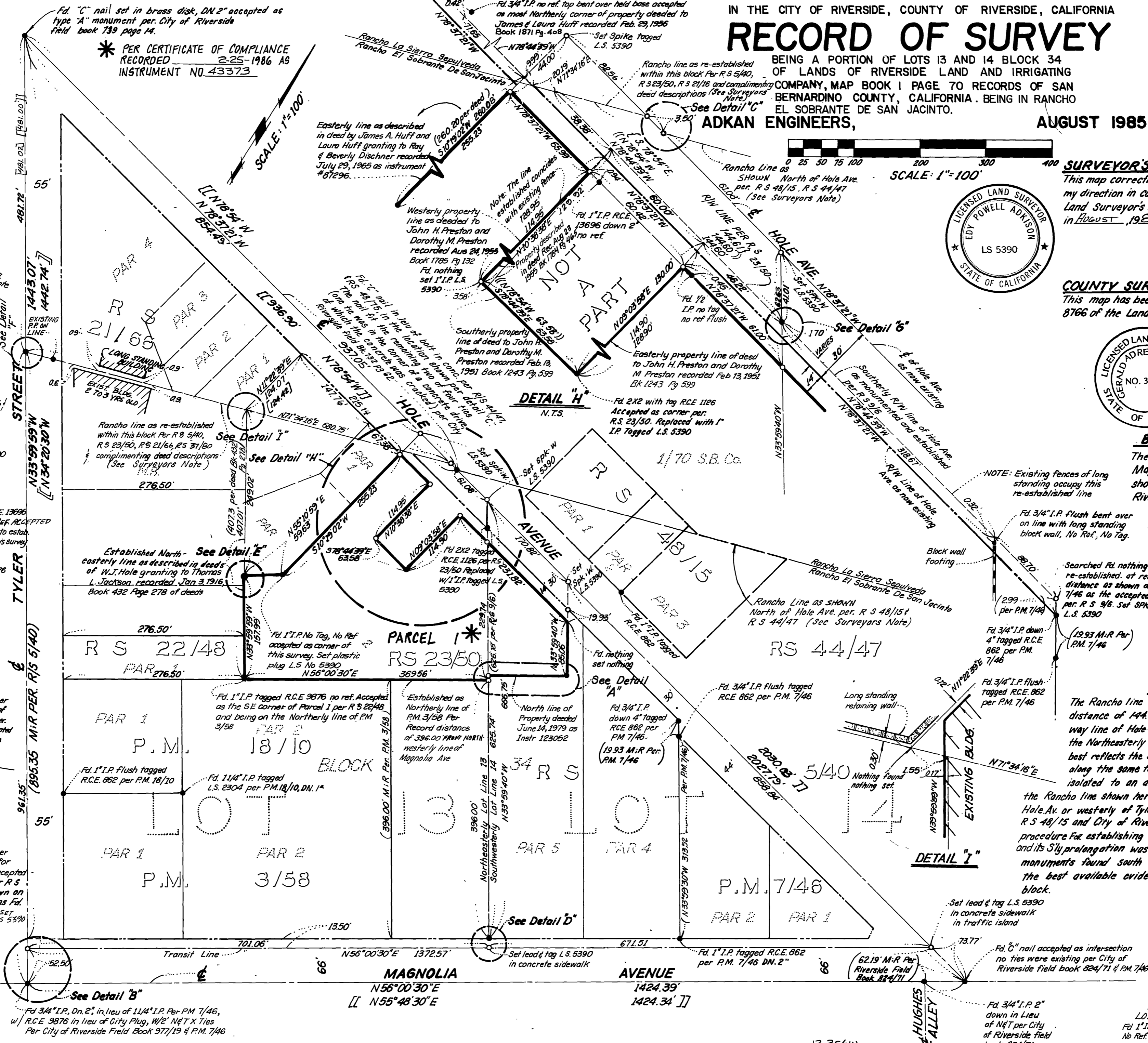
The bearing are based on the centerline of Magnolia Avenue as being N56°00'30"E. as shown by P.M. 3/58, & P.M. 7/46, records of Riverside County, California.

### SURVEYOR'S NOTES

- "C" Nail = Concrete nail
- Indicates found monument as noted unless otherwise noted.
- Indicates set 1" I.P. tagged L.S. 5390 flush re-established, at record distance as shown on P.M. 7/46 as the accepted corner.
- ( ) Record as indicated.
- [ ] Per. R.S. 23/50
- [ ] Per. R.S. 21/66
- [ ] Indicates record bearings and Record or calculated distances per Tr. #3 of La Sierra Hts. M.B. 8/27.

### SURVEYOR'S NOTE

The Rancho line within this block was re-established holding a distance of 144.60' along the monumented southerly right of way line of Hole Av. From the intersection of that R/W line with the Northeastly line of Lot 13. The location as shown on this map best reflects the deed descriptions and record maps that follow along the same footsteps. Because the deed descriptions are isolated to an area southerly of Hole Av. the prolongation of the Rancho line shown hereon should not be produced northerly of Hole Av. or westerly of Tyler Av. the Rancho line as shown on R.S. 44/47 R.S. 48/15 and City of Riverside field book 732, pg. 62 did not show a procedure for establishing the Rancho line at its intersection with Hole Av. and its S.W. prolongation was in conflict with deed descriptions and monuments found south of Hole Av. therefore it was not used as the best available evidence to retrace that line within this block.



DETAIL "B"

DETAIL "C"

DETAIL "D"

DETAIL "E"

DETAIL "F"

DETAIL "G"

DETAIL "H"

DETAIL "I"