

IN THE CITIES OF RIVERSIDE, MORENO VALLEY AND IN THE UNINCORPORATED TERRITORY OF THE COUNTY OF RIVERSIDE, STATE OF CALIFORNIA.

SHEET 1 OF 12 SHEETS

RECORD OF SURVEY

THOSE PORTIONS OF SECTION 26 OF TOWNSHIP 2 SOUTH, RANGE 3 WEST, SECTION 34 OF TOWNSHIP 2 SOUTH, RANGE 4 WEST, SECTIONS 8, 9, 10, 11, 14, 15, 16, 26, 34 AND 35 OF TOWNSHIP 2 SOUTH, RANGE 5 WEST, SECTION 6, OF TOWNSHIP 3 SOUTH, RANGE 2 WEST, SECTIONS 1, 2, 3, 4, 5 AND 6 OF TOWNSHIP 3 SOUTH, RANGE 3 WEST, SECTIONS 1, 2, 3, 4, 10 AND 11 OF TOWNSHIP 3 SOUTH, RANGE 4 WEST, SECTIONS 3, 4, 7, 8, 9, 18, 31 AND 33 OF TOWNSHIP 3 SOUTH, RANGE 5 WEST, AND SECTION 2, 12, 13, 22, 23, 24 AND 33 OF TOWNSHIP 3 SOUTH, RANGE 6 WEST, ALL OF SAN BERNARDINO BASE AND MERIDIAN.

RECORDER'S STATEMENT:
FILED THIS 14th DAY OF JANUARY, 1992
AT 11:00 A.M. IN BOOK 32 OF RECORDS OF
SURVEY AT PAGES 28-66, AT THE
REQUEST OF THE COUNTY SURVEYOR.
NO. 13406
FEE \$28.00

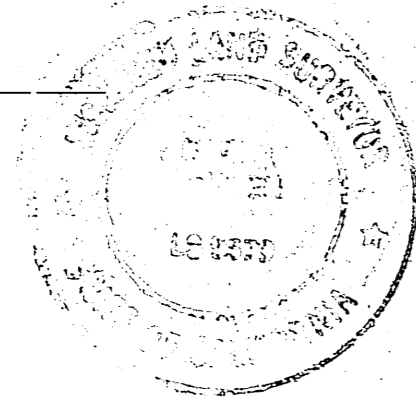
WILLIAM E. CONERLY
COUNTY RECORDER
BY *Gina Huntley* DEPUTY

STATE OF CALIFORNIA, DEPARTMENT OF TRANSPORTATION, MONUMENTATION MAP.
DATE OF SURVEY: AUGUST, 1990 PSOMAS AND ASSOCIATES

SURVEYOR'S STATEMENT:

THIS MAP CORRECTLY REPRESENTS A SURVEY MADE BY ME OR UNDER MY DIRECTION IN CONFORMANCE WITH THE REQUIREMENTS OF THE LAND SURVEYORS ACT AT THE REQUEST OF RIVERSIDE COUNTY TRANSPORTATION COMMISSION IN MAY 1990.

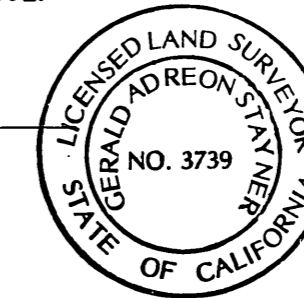
Kari J. LaJunen
KARI J. LAJUNEN LS 5679
LICENSE EXPIRES: 9-31-1995



COUNTY SURVEYOR'S STATEMENT:

THIS MAP HAS BEEN EXAMINED IN ACCORDANCE WITH SECTION 8766 OF THE LAND SURVEYOR'S ACT THIS 07th DAY OF JAN, 1992.

Gerald A. Stagner
GERALD A. STAGNER COUNTY SURVEYOR
L.S. 3739
LICENSE EXPIRES: 6-30-92



MONUMENT NOTES:

- HORIZONTALLY CONSTRAINED EXISTING POINT.
- ▲ UNCONSTRAINED EXISTING POINT.
- △ NEWLY ESTABLISHED PRIMARY POINT.
- NEWLY ESTABLISHED SECONDARY POINT.

NOTE: SEE SHEET 12 OF 12 FOR COORDINATES.

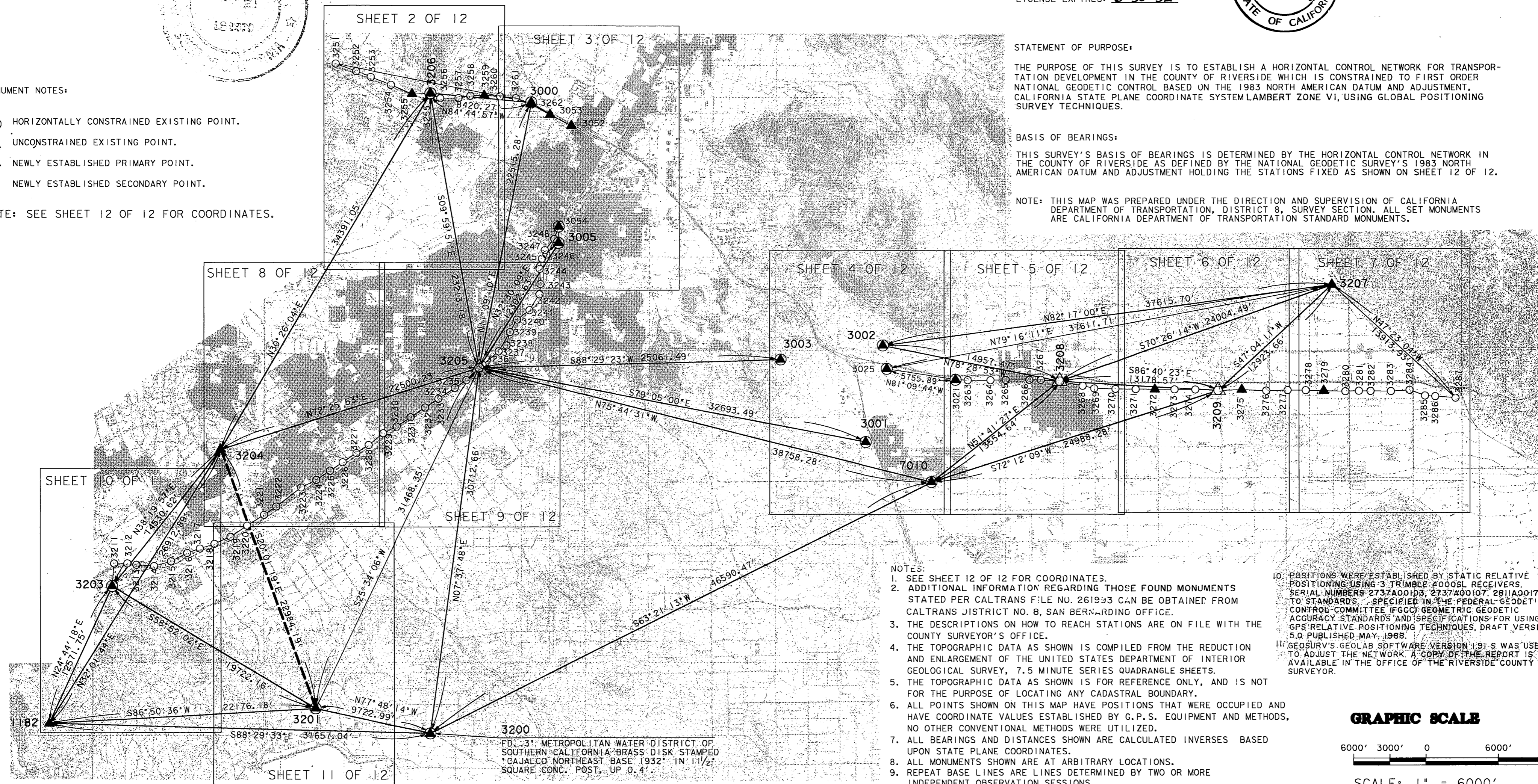
STATEMENT OF PURPOSE:

THE PURPOSE OF THIS SURVEY IS TO ESTABLISH A HORIZONTAL CONTROL NETWORK FOR TRANSPORTATION DEVELOPMENT IN THE COUNTY OF RIVERSIDE WHICH IS CONSTRAINED TO FIRST ORDER NATIONAL GEODETIC CONTROL BASED ON THE 1983 NORTH AMERICAN DATUM AND ADJUSTMENT, CALIFORNIA STATE PLANE COORDINATE SYSTEM LAMBERT ZONE VI, USING GLOBAL POSITIONING SURVEY TECHNIQUES.

BASIS OF BEARINGS:

THIS SURVEY'S BASIS OF BEARINGS IS DETERMINED BY THE HORIZONTAL CONTROL NETWORK IN THE COUNTY OF RIVERSIDE AS DEFINED BY THE NATIONAL GEODETIC SURVEY'S 1983 NORTH AMERICAN DATUM AND ADJUSTMENT HOLDING THE STATIONS FIXED AS SHOWN ON SHEET 12 OF 12.

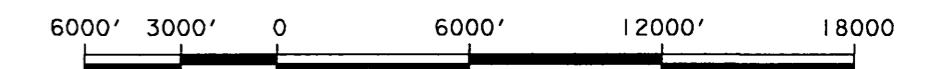
NOTE: THIS MAP WAS PREPARED UNDER THE DIRECTION AND SUPERVISION OF CALIFORNIA DEPARTMENT OF TRANSPORTATION, DISTRICT 8, SURVEY SECTION. ALL SET MONUMENTS ARE CALIFORNIA DEPARTMENT OF TRANSPORTATION STANDARD MONUMENTS.



- NOTES:
1. SEE SHEET 12 OF 12 FOR COORDINATES.
 2. ADDITIONAL INFORMATION REGARDING THOSE FOUND MONUMENTS STATED PER CALTRANS FILE NO. 261933 CAN BE OBTAINED FROM CALTRANS DISTRICT NO. 8, SAN BERNARDINO OFFICE.
 3. THE DESCRIPTIONS ON HOW TO REACH STATIONS ARE ON FILE WITH THE COUNTY SURVEYOR'S OFFICE.
 4. THE TOPOGRAPHIC DATA AS SHOWN IS COMPILED FROM THE REDUCTION AND ENLARGEMENT OF THE UNITED STATES DEPARTMENT OF INTERIOR GEOLOGICAL SURVEY, 7.5 MINUTE SERIES QUADRANGLE SHEETS.
 5. THE TOPOGRAPHIC DATA AS SHOWN IS FOR REFERENCE ONLY, AND IS NOT FOR THE PURPOSE OF LOCATING ANY CADASTRAL BOUNDARY.
 6. ALL POINTS SHOWN ON THIS MAP HAVE POSITIONS THAT WERE OCCUPIED AND HAVE COORDINATE VALUES ESTABLISHED BY G.P.S. EQUIPMENT AND METHODS, NO OTHER CONVENTIONAL METHODS WERE UTILIZED.
 7. ALL BEARINGS AND DISTANCES SHOWN ARE CALCULATED INVERSES BASED UPON STATE PLANE COORDINATES.
 8. ALL MONUMENTS SHOWN ARE AT ARBITRARY LOCATIONS.
 9. REPEAT BASE LINES ARE LINES DETERMINED BY TWO OR MORE INDEPENDENT OBSERVATION SESSIONS.

10. POSITIONS WERE ESTABLISHED BY STATIC RELATIVE POSITIONING USING 3 TRIMBLE 4000SL RECEIVERS, SERIAL NUMBERS 2737A00103, 2737A00107, 2811A00170, TO STANDARDS SPECIFIED IN THE FEDERAL GEODETIC CONTROL COMMITTEE (FGCC) GEOMETRIC GEODETIC ACCURACY STANDARDS AND SPECIFICATIONS FOR USING GPS RELATIVE POSITIONING TECHNIQUES, DRAFT VERSION 5.0 PUBLISHED MAY, 1988.
11. GEOSURV'S GEOLAB SOFTWARE VERSION 1.91-S WAS USED TO ADJUST THE NETWORK. A COPY OF THE REPORT IS AVAILABLE IN THE OFFICE OF THE RIVERSIDE COUNTY SURVEYOR.

GRAPHIC SCALE



SCALE: 1" = 6000'

RECORD OF SURVEY

THOSE PORTIONS OF SECTION 26 OF TOWNSHIP 2 SOUTH, RANGE 3 WEST, SECTION 34 OF TOWNSHIP 2 SOUTH, RANGE 4 WEST, SECTIONS 8, 9, 10, 11, 14, 15, 16, 26, 34 AND 35 OF TOWNSHIP 2 SOUTH, RANGE 5 WEST, SECTION 6, OF TOWNSHIP 3 SOUTH, RANGE 2 WEST, SECTIONS 1, 2, 3, 4, 5 AND 6 OF TOWNSHIP 3 SOUTH, RANGE 3 WEST, SECTIONS 1, 2, 3, 4, 10 AND 11 OF TOWNSHIP 3 SOUTH, RANGE 4 WEST, SECTIONS 3, 4, 7, 8, 9, 18, 31 AND 33 OF TOWNSHIP 3 SOUTH, RANGE 5 WEST, AND SECTION 2, 12, 13, 22, 23, 24 AND 33 OF TOWNSHIP 3 SOUTH, RANGE 6 WEST, ALL OF SAN BERNARDINO BASE AND MERIDIAN.

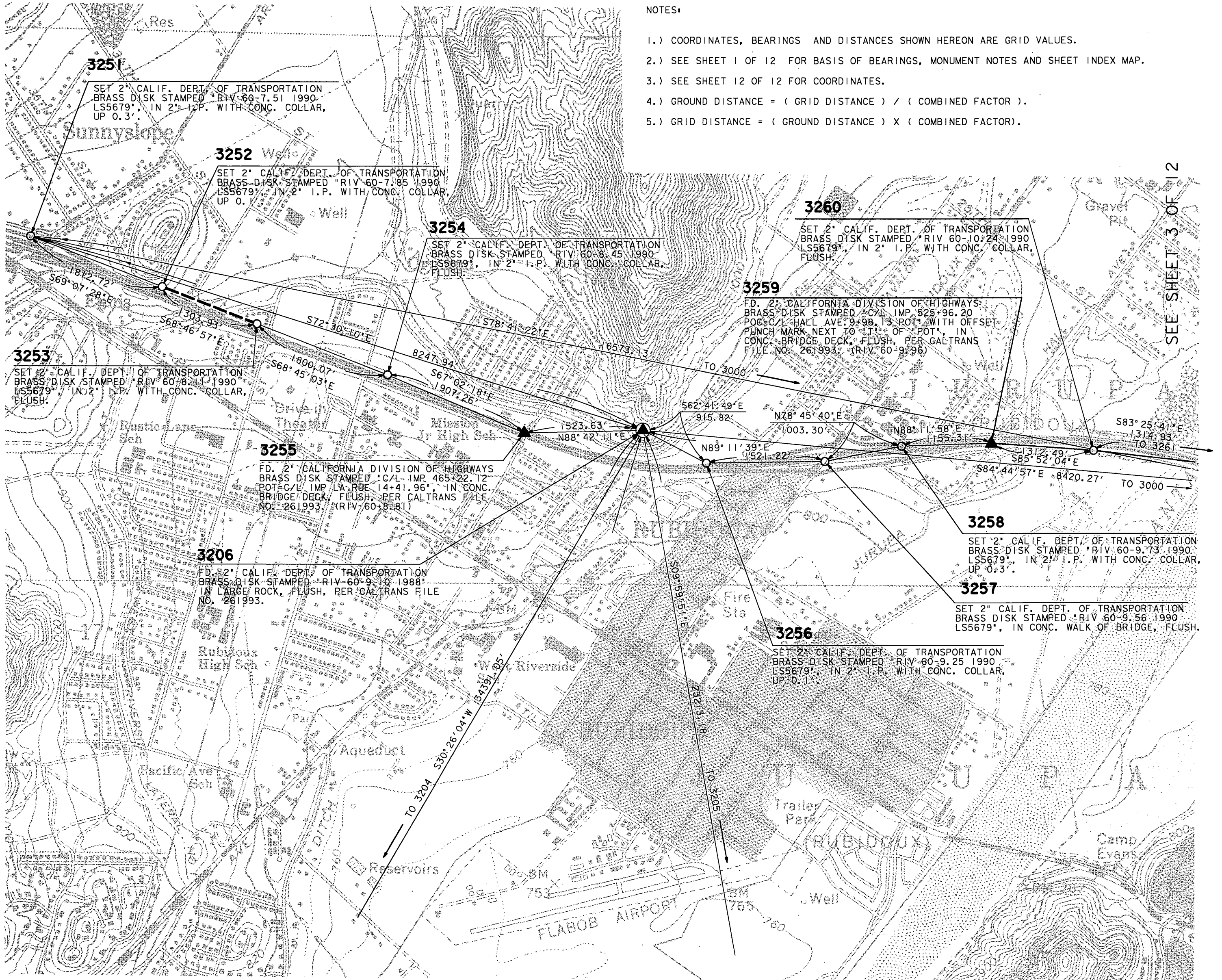
DATE OF SURVEY: AUGUST, 1990

PSOMAS AND ASSOCIATES

Copy 90/25

NOTES:

- 1.) COORDINATES, BEARINGS AND DISTANCES SHOWN HEREON ARE GRID VALUES.
- 2.) SEE SHEET 1 OF 12 FOR BASIS OF BEARINGS, MONUMENT NOTES AND SHEET INDEX MAP.
- 3.) SEE SHEET 12 OF 12 FOR COORDINATES.
- 4.) GROUND DISTANCE = (GRID DISTANCE) / (COMBINED FACTOR).
- 5.) GRID DISTANCE = (GROUND DISTANCE) X (COMBINED FACTOR).



SEE SHEET 8 OF 12

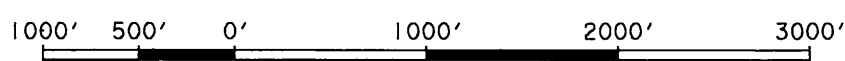
SEE SHEET 9 OF 12



LEGEND:

- GPS OBSERVED BASE LINE.
- - - - REPEAT BASELINE

GRAPHIC SCALE



SCALE : 1" = 1000'

RECORD OF SURVEY

THOSE PORTIONS OF SECTION 26 OF TOWNSHIP 2 SOUTH, RANGE 3 WEST, SECTION 34 OF TOWNSHIP 2 SOUTH, RANGE 4 WEST, SECTIONS 8, 9, 10, 11, 14, 15, 16, 26, 34 AND 35 OF TOWNSHIP 2 SOUTH, RANGE 5 WEST, SECTION 6, OF TOWNSHIP 3 SOUTH, RANGE 2 WEST, SECTIONS 1, 2, 3, 4, 5 AND 6 OF TOWNSHIP 3 SOUTH, RANGE 3 WEST, SECTIONS 1, 2, 3, 4, 10 AND 11 OF TOWNSHIP 3 SOUTH, RANGE 4 WEST, SECTIONS 3, 4, 7, 8, 9, 18, 31 AND 33 OF TOWNSHIP 3 SOUTH, RANGE 5 WEST, AND SECTION 2, 12, 13, 22, 23, 24 AND 33 OF TOWNSHIP 3 SOUTH, RANGE 6 WEST, ALL OF SAN BERNARDINO BASE AND MERIDIAN.

DATE OF SURVEY: AUGUST, 1990 PSOMAS AND ASSOCIATES

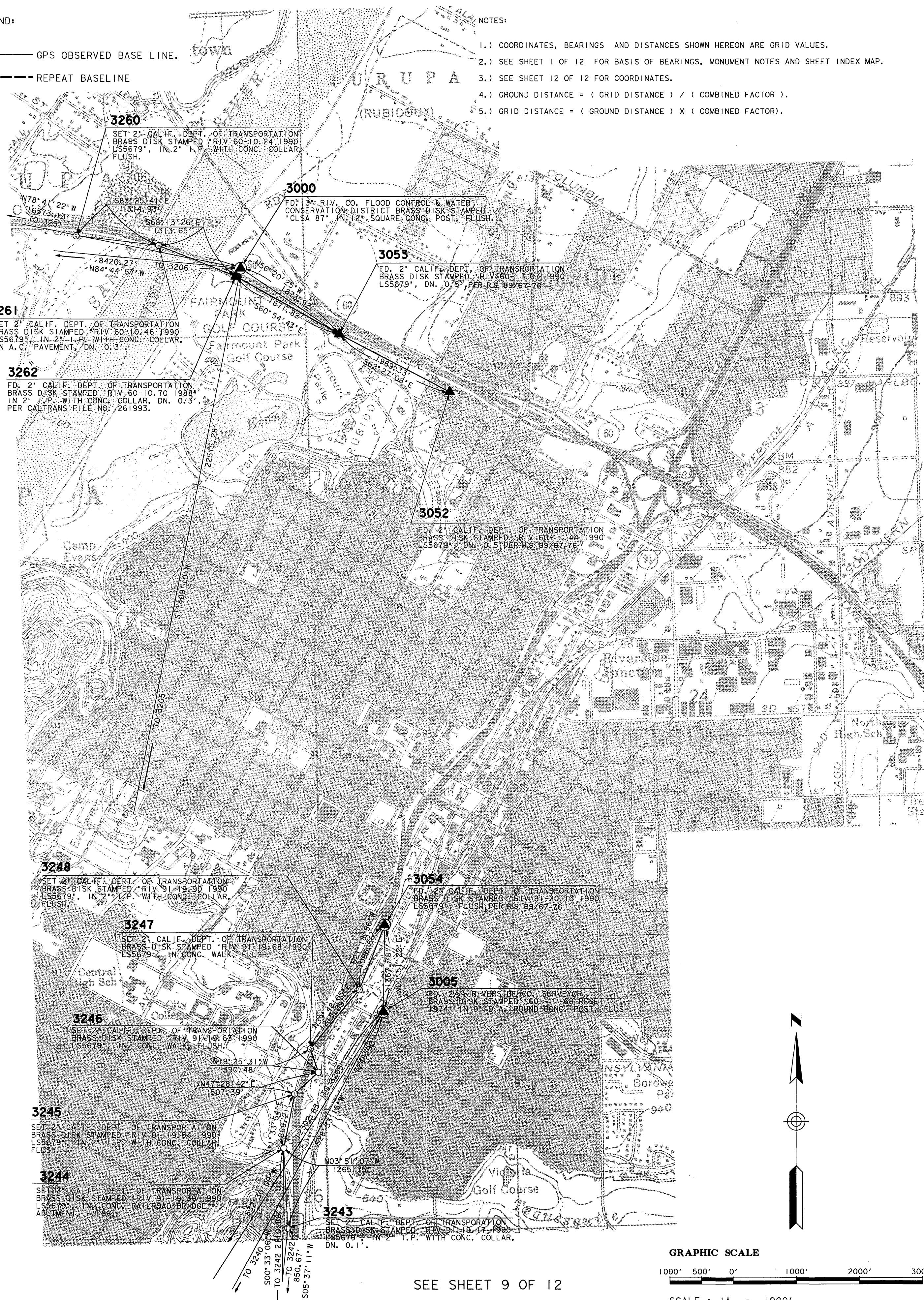
LEGEND:

- GPS OBSERVED BASE LINE.
- - - REPEAT BASELINE

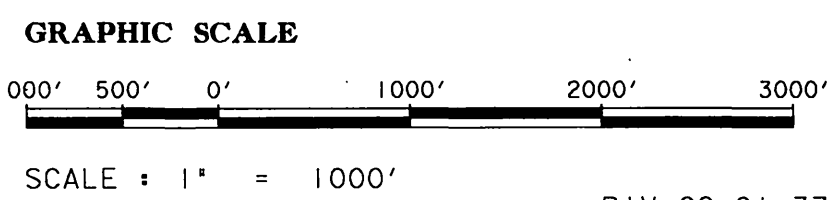
NOTES:

- 1.) COORDINATES, BEARINGS AND DISTANCES SHOWN HEREON ARE GRID VALUES.
- 2.) SEE SHEET 1 OF 12 FOR BASIS OF BEARINGS, MONUMENT NOTES AND SHEET INDEX MAP.
- 3.) SEE SHEET 12 OF 12 FOR COORDINATES.
- 4.) GROUND DISTANCE = (GRID DISTANCE) / (COMBINED FACTOR).
- 5.) GRID DISTANCE = (GROUND DISTANCE) X (COMBINED FACTOR).

SEE SHEET 2 OF 12



SEE SHEET 9 OF 12



RECORD OF SURVEY

THOSE PORTIONS OF SECTION 26 OF TOWNSHIP 2 SOUTH, RANGE 3 WEST, SECTION 34 OF TOWNSHIP 2 SOUTH, RANGE 4 WEST, SECTIONS 8, 9, 10, 11, 14, 15, 16, 26, 34 AND 35 OF TOWNSHIP 2 SOUTH, RANGE 5 WEST, SECTION 6, OF TOWNSHIP 3 SOUTH, RANGE 2 WEST, SECTIONS 1, 2, 3, 4, 5 AND 6 OF TOWNSHIP 3 SOUTH, RANGE 3 WEST, SECTIONS 1, 2, 3, 4, 10 AND 11 OF TOWNSHIP 3 SOUTH, RANGE 4 WEST, SECTIONS 3, 4, 7, 8, 9, 18, 31 AND 33 OF TOWNSHIP 3 SOUTH, RANGE 5 WEST, AND SECTION 2, 12, 13, 22, 23, 24 AND 33 OF TOWNSHIP 3 SOUTH, RANGE 6 WEST, ALL OF SAN BERNARDINO BASE AND MERIDIAN.

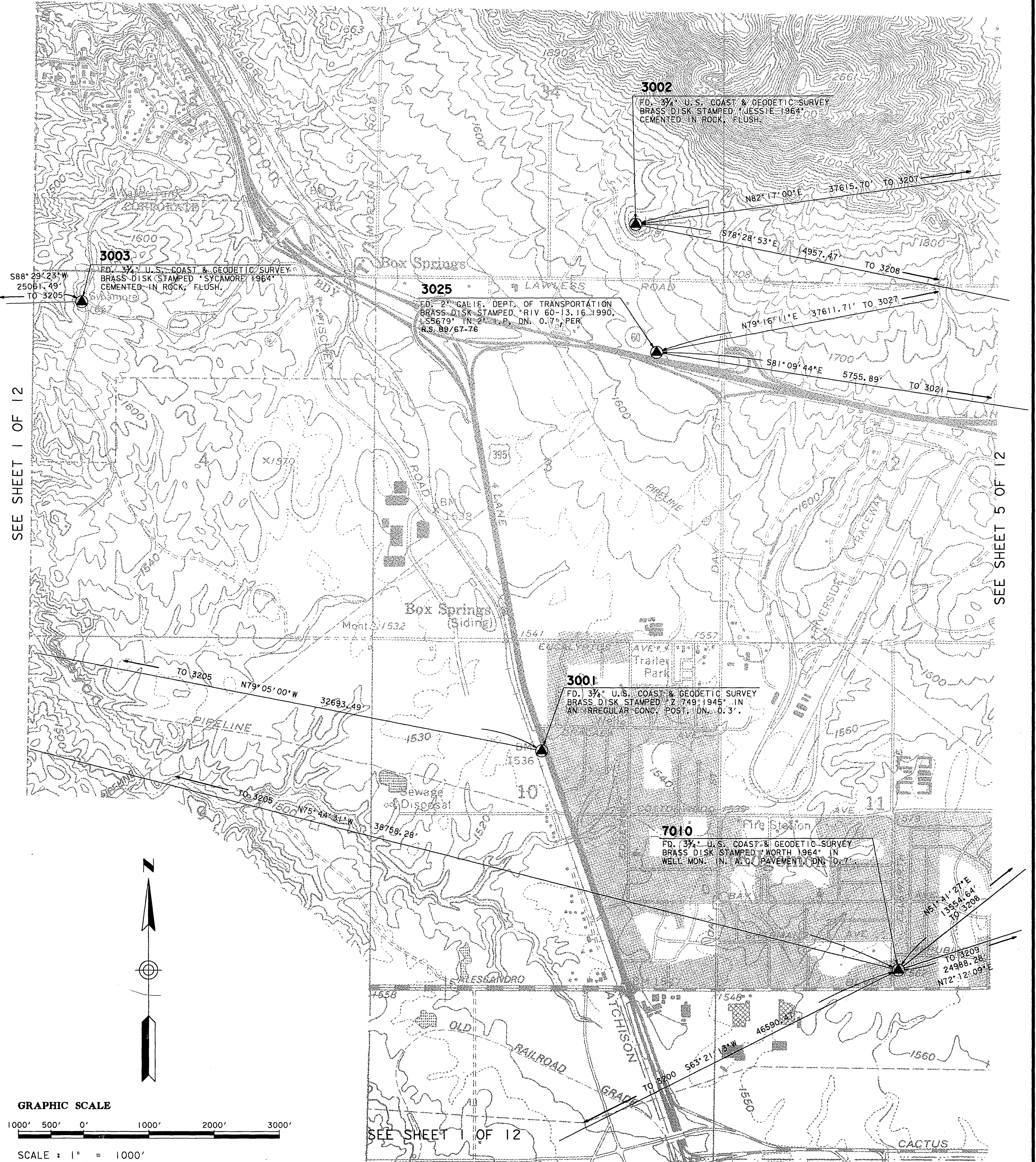
DATE OF SURVEY: AUGUST, 1990 PSOMAS AND ASSOCIATES

LEGEND:

- GPS OBSERVED BASE LINE.
- - - REPEAT BASELINE

NOTES:

- 1.) COORDINATES, BEARINGS AND DISTANCES SHOWN HEREON ARE GRID VALUES.
- 2.) SEE SHEET 1 OF 12 FOR BASIS OF BEARINGS, MONUMENT NOTES AND SHEET INDEX MAP.
- 3.) SEE SHEET 12 OF 12 FOR COORDINATES.
- 4.) GROUND DISTANCE = (GRID DISTANCE) / (COMBINED FACTOR).
- 5.) GRID DISTANCE = (GROUND DISTANCE) X (COMBINED FACTOR).



Copy 90 58

RECORD OF SURVEY

THOSE PORTIONS OF SECTION 26 OF TOWNSHIP 2 SOUTH, RANGE 3 WEST, SECTION 34 OF TOWNSHIP 2 SOUTH, RANGE 4 WEST, SECTIONS 8, 9, 10, 11, 14, 15, 16, 26, 34 AND 35 OF TOWNSHIP 2 SOUTH, RANGE 5 WEST, SECTION 6, OF TOWNSHIP 3 SOUTH, RANGE 2 WEST, SECTIONS 1, 2, 3, 4, 5 AND 6 OF TOWNSHIP 3 SOUTH, RANGE 3 WEST, SECTIONS 1, 2, 3, 4, 10 AND 11 OF TOWNSHIP 3 SOUTH, RANGE 4 WEST, SECTIONS 3, 4, 7, 8, 9, 18, 31 AND 33 OF TOWNSHIP 3 SOUTH, RANGE 5 WEST, AND SECTION 2, 12, 13, 22, 23, 24 AND 33 OF TOWNSHIP 3 SOUTH, RANGE 6 WEST, ALL OF SAN BERNARDINO BASE AND MERIDIAN.

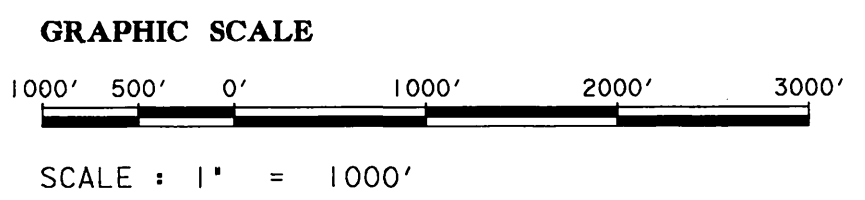
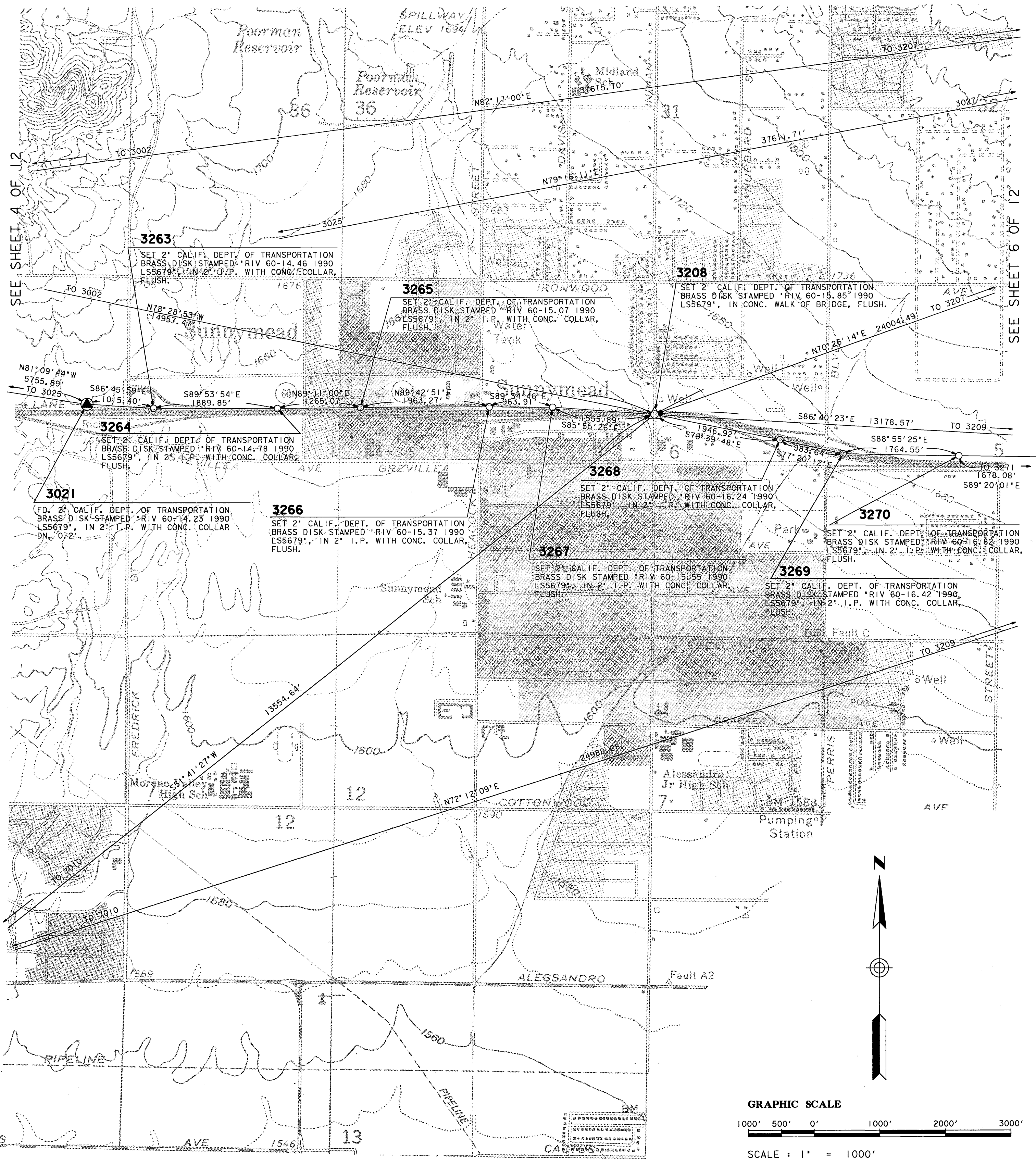
DATE OF SURVEY: AUGUST, 1990 PSOMAS AND ASSOCIATES

LEGEND:

- GPS OBSERVED BASE LINE.
- REPEAT BASELINE

NOTES:

- 1.) COORDINATES, BEARINGS AND DISTANCES SHOWN HEREON ARE GRID VALUES.
- 2.) SEE SHEET 1 OF 12 FOR BASIS OF BEARINGS, MONUMENT NOTES AND SHEET INDEX MAP.
- 3.) SEE SHEET 12 OF 12 FOR COORDINATES.
- 4.) GROUND DISTANCE = (GRID DISTANCE) / (COMBINED FACTOR).
- 5.) GRID DISTANCE = (GROUND DISTANCE) X (COMBINED FACTOR).

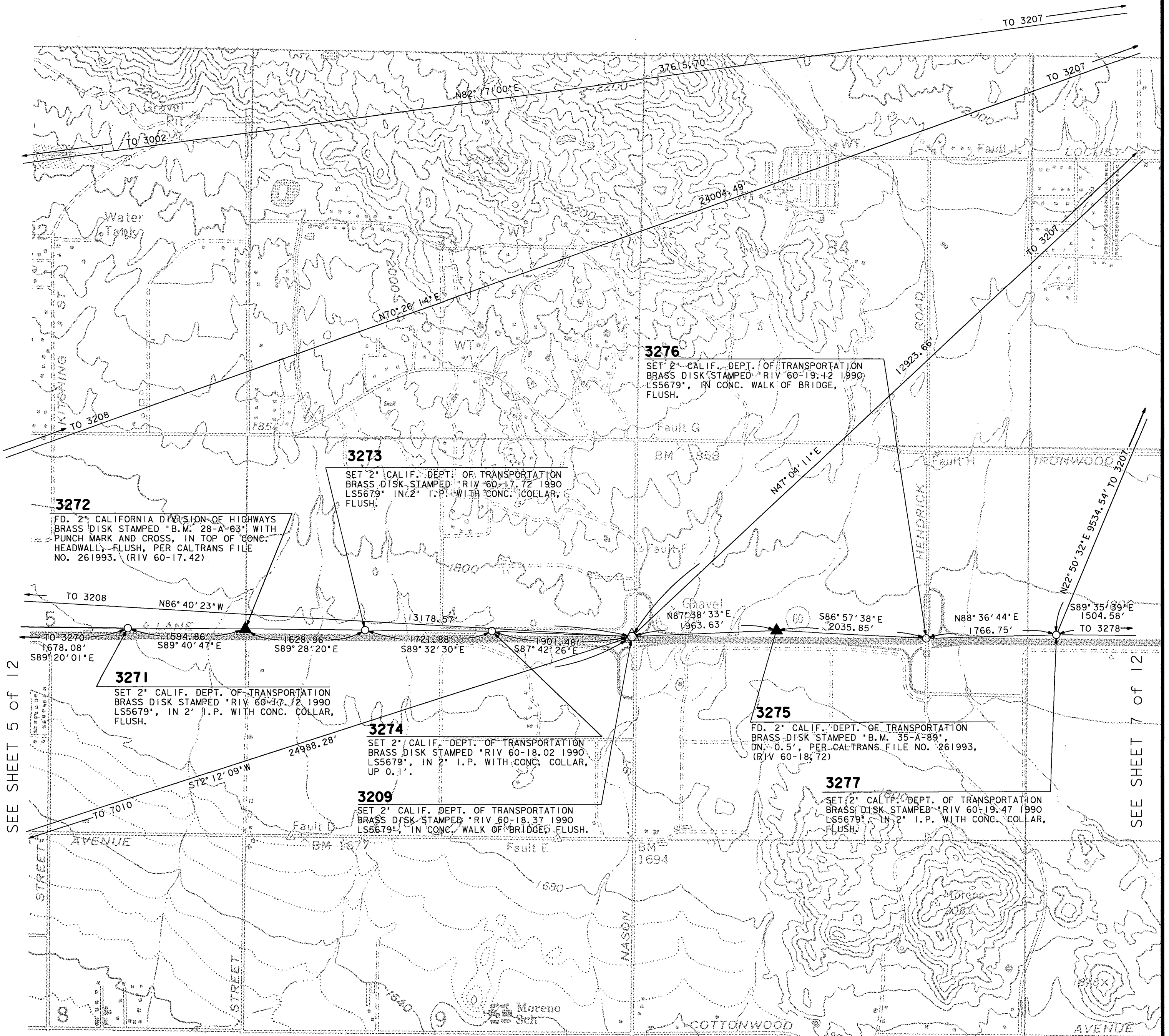


Copy 90/59

RECORD OF SURVEY

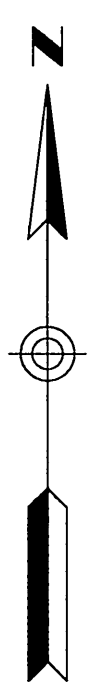
THOSE PORTIONS OF SECTION 26 OF TOWNSHIP 2 SOUTH, RANGE 3 WEST, SECTION 34 OF TOWNSHIP 2 SOUTH, RANGE 4 WEST, SECTIONS 8, 9, 10, 11, 14, 15, 16, 26, 34 AND 35 OF TOWNSHIP 2 SOUTH, RANGE 5 WEST, SECTION 6, OF TOWNSHIP 3 SOUTH, RANGE 2 WEST, SECTIONS 1, 2, 3, 4, 5 AND 6 OF TOWNSHIP 3 SOUTH, RANGE 3 WEST, SECTIONS 1, 2, 3, 4, 10 AND 11 OF TOWNSHIP 3 SOUTH, RANGE 4 WEST, SECTIONS 3, 4, 7, 8, 9, 18, 31 AND 33 OF TOWNSHIP 3 SOUTH, RANGE 5 WEST, AND SECTION 2, 12, 13, 22, 23, 24 AND 33 OF TOWNSHIP 3 SOUTH, RANGE 6 WEST, ALL OF SAN BERNARDINO BASE AND MERIDIAN.

DATE OF SURVEY: AUGUST, 1990 PSOMAS AND ASSOCIATES



SEE SHEET 5 OF 12

SEE SHEET 7 OF 12

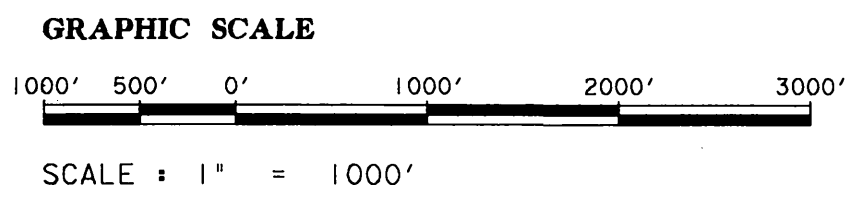


NOTES:

- 1.) COORDINATES, BEARINGS AND DISTANCES SHOWN HEREON ARE GRID VALUES.
- 2.) SEE SHEET 1 OF 12 FOR BASIS OF BEARINGS, MONUMENT NOTES AND SHEET INDEX MAP.
- 3.) SEE SHEET 12 OF 12 FOR COORDINATES.
- 4.) GROUND DISTANCE = (GRID DISTANCE) / (COMBINED FACTOR).
- 5.) GRID DISTANCE = (GROUND DISTANCE) X (COMBINED FACTOR).

LEGEND:

- GPS OBSERVED BASE LINE.
- REPEAT BASELINE



Copy 90/60

RECORD OF SURVEY

THOSE PORTIONS OF SECTION 26 OF TOWNSHIP 2 SOUTH, RANGE 3 WEST, SECTION 34 OF TOWNSHIP 2 SOUTH, RANGE 4 WEST, SECTIONS 8, 9, 10, 11, 14, 15, 16, 26, 34 AND 35 OF TOWNSHIP 2 SOUTH, RANGE 5 WEST, SECTION 6, OF TOWNSHIP 3 SOUTH, RANGE 2 WEST, SECTIONS 1, 2, 3, 4, 5 AND 6 OF TOWNSHIP 3 SOUTH, RANGE 3 WEST, SECTIONS 1, 2, 3, 4, 10 AND 11 OF TOWNSHIP 3 SOUTH, RANGE 4 WEST, SECTIONS 3, 4, 7, 8, 9, 18, 31 AND 33 OF TOWNSHIP 3 SOUTH, RANGE 5 WEST, AND SECTION 2, 12, 13, 22, 23, 24 AND 33 OF TOWNSHIP 3 SOUTH, RANGE 6 WEST, ALL OF SAN BERNARDINO BASE AND MERIDIAN.

DATE OF SURVEY: AUGUST, 1990 PSOMAS AND ASSOCIATES

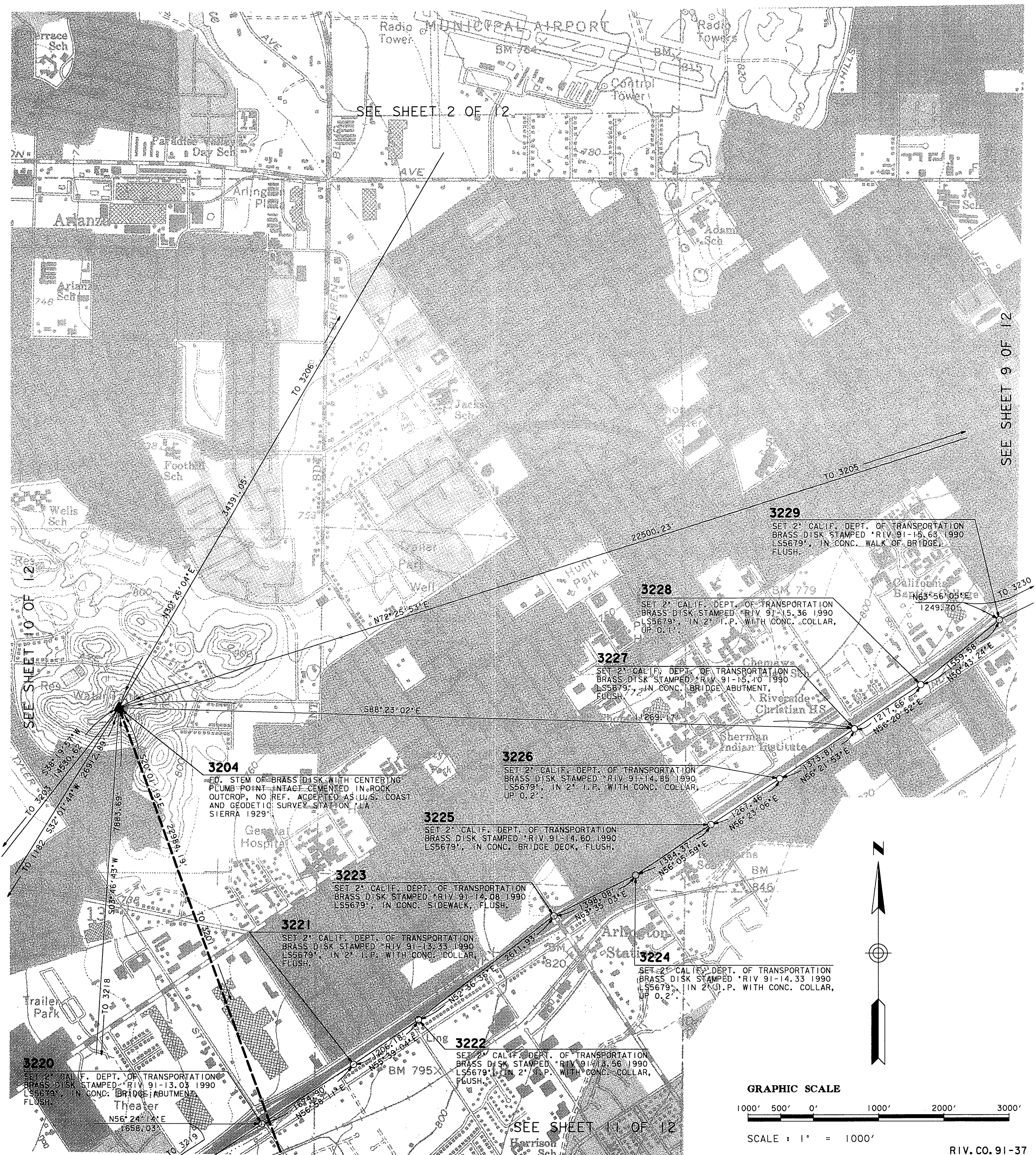
LEGEND:

———— GPS OBSERVED BASE LINE.

----- REPEAT BASELINE

NOTES:

- 1.) COORDINATES, BEARINGS AND DISTANCES SHOWN HEREON ARE GRID VALUES.
- 2.) SEE SHEET 1 OF 12 FOR BASIS OF BEARINGS, MONUMENT NOTES AND SHEET INDEX MAP.
- 3.) SEE SHEET 12 OF 12 FOR COORDINATES.
- 4.) GROUND DISTANCE = (GRID DISTANCE) / (COMBINED FACTOR).
- 5.) GRID DISTANCE = (GROUND DISTANCE) X (COMBINED FACTOR).



SEE SHEET 10 OF 12

SEE SHEET 2 OF 12

SEE SHEET 9 OF 12

SEE SHEET 11 OF 12

3220
 SET 2" CALIF. DEPT. OF TRANSPORTATION
 BRASS DISK STAMPED "RIV 91-13.03 1990
 LS5679", IN CONC. BRIDGE ABUTMENT,
 FLUSH.

3204
 1/2" STEM OF BRASS DISK WITH CENTERING
 PLUMB POINT INTACT CEMENTED IN ROCK
 OUTCROP, NO REF. ACCEPTED AS U.S. COAST
 AND GEODETIC SURVEY STATION, IGA
 SIERRA 1929"

3221
 SET 2" CALIF. DEPT. OF TRANSPORTATION
 BRASS DISK STAMPED "RIV 91-13.33 1990
 LS5679", IN 2" I.P. WITH CONC. COLLAR,
 FLUSH.

3222
 SET 2" CALIF. DEPT. OF TRANSPORTATION
 BRASS DISK STAMPED "RIV 91-13.56 1990
 LS5679", IN 2" I.P. WITH CONC. COLLAR,
 FLUSH.

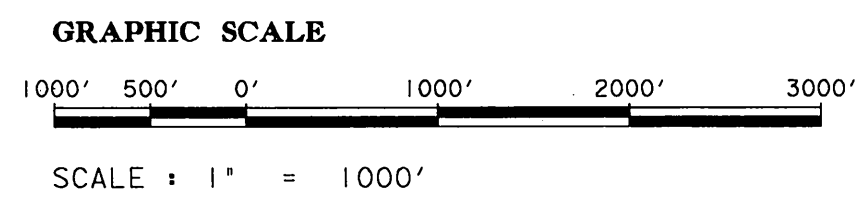
3225
 SET 2" CALIF. DEPT. OF TRANSPORTATION
 BRASS DISK STAMPED "RIV 91-14.60 1990
 LS5679", IN CONC. BRIDGE DECK, FLUSH.

3226
 SET 2" CALIF. DEPT. OF TRANSPORTATION
 BRASS DISK STAMPED "RIV 91-14.85 1990
 LS5679", IN 2" I.P. WITH CONC. COLLAR,
 UP 0.2"

3227
 SET 2" CALIF. DEPT. OF TRANSPORTATION
 BRASS DISK STAMPED "RIV 91-15.10 1990
 LS5679", IN CONC. BRIDGE ABUTMENT,
 FLUSH.

3228
 SET 2" CALIF. DEPT. OF TRANSPORTATION
 BRASS DISK STAMPED "RIV 91-15.36 1990
 LS5679", IN 2" I.P. WITH CONC. COLLAR,
 UP 0.1"

3229
 SET 2" CALIF. DEPT. OF TRANSPORTATION
 BRASS DISK STAMPED "RIV 91-15.63 1990
 LS5679", IN CONC. WALK OF BRIDGE,
 FLUSH.



Copy 90/63

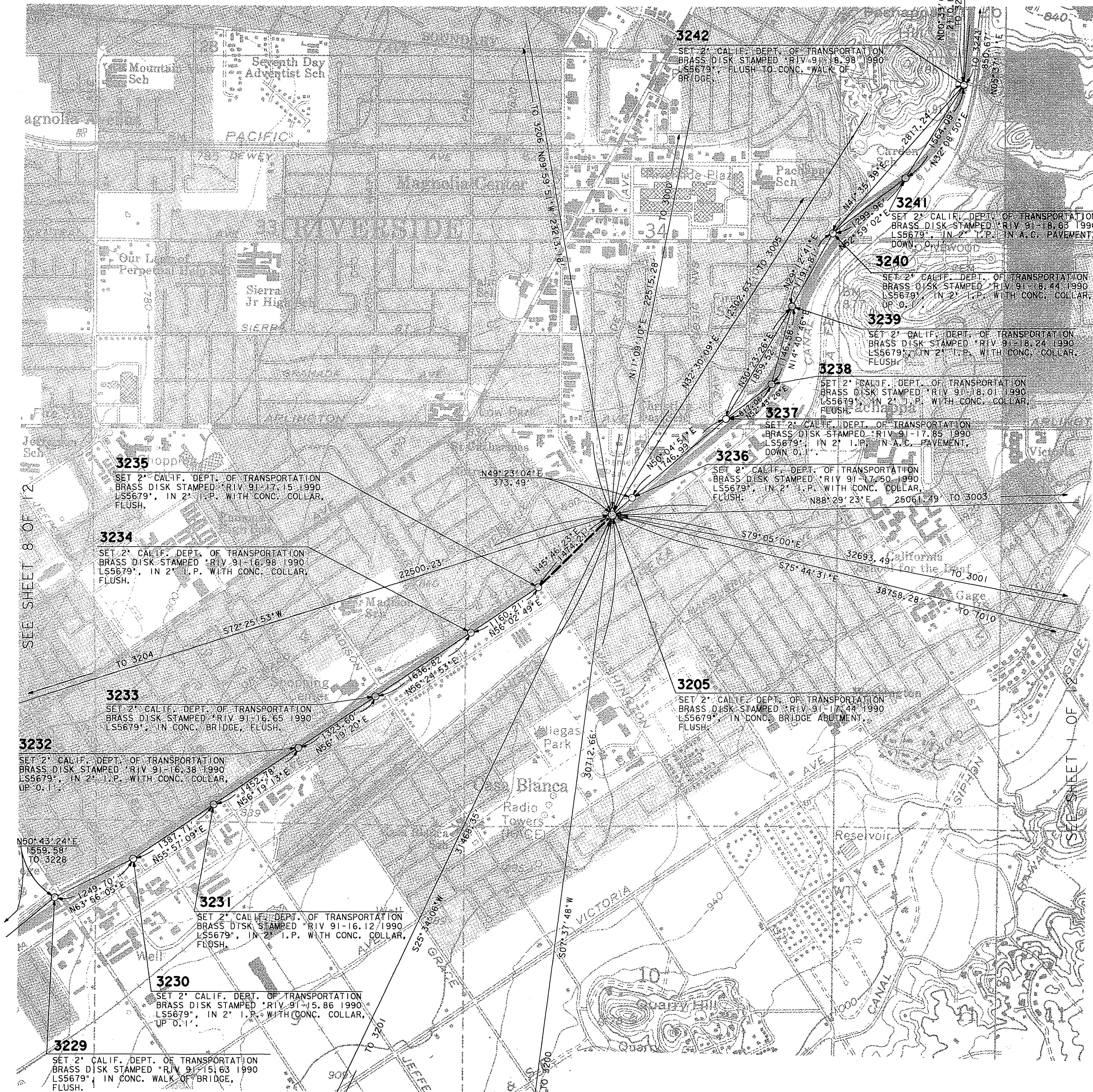
RECORD OF SURVEY

THOSE PORTIONS OF SECTION 26 OF TOWNSHIP 2 SOUTH, RANGE 3 WEST, SECTION 34 OF TOWNSHIP 2 SOUTH, RANGE 4 WEST, SECTIONS 8, 9, 10, 11, 14, 15, 16, 26, 34 AND 35 OF TOWNSHIP 2 SOUTH, RANGE 5 WEST, SECTION 6, OF TOWNSHIP 3 SOUTH, RANGE 2 WEST, SECTIONS 1, 2, 3, 4, 5 AND 6 OF TOWNSHIP 3 SOUTH, RANGE 3 WEST, SECTIONS 1, 2, 3, 4, 10 AND 11 OF TOWNSHIP 3 SOUTH, RANGE 4 WEST, SECTIONS 3, 4, 7, 8, 9, 18, 31 AND 33 OF TOWNSHIP 3 SOUTH, RANGE 5 WEST, AND SECTION 2, 12, 13, 22, 23, 24 AND 33 OF TOWNSHIP 3 SOUTH, RANGE 6 WEST, ALL OF SAN BERNARDINO BASE AND MERIDIAN.

DATE OF SURVEY: AUGUST, 1990 PSOMAS AND ASSOCIATES

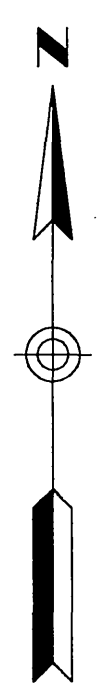
SEE SHEET 2 OF 12

SEE SHEET 3 OF 12



SEE SHEET 8 OF 12

SEE SHEET 11 OF 12



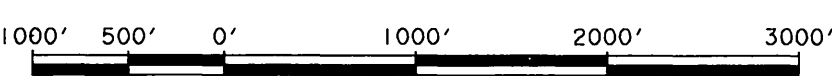
NOTES:

- 1.) COORDINATES, BEARINGS AND DISTANCES SHOWN HEREON ARE GRID VALUES.
- 2.) SEE SHEET 1 OF 12 FOR BASIS OF BEARINGS, MONUMENT NOTES AND SHEET INDEX MAP.
- 3.) SEE SHEET 12 OF 12 FOR COORDINATES.
- 4.) GROUND DISTANCE = (GRID DISTANCE) / (COMBINED FACTOR).
- 5.) GRID DISTANCE = (GROUND DISTANCE) X (COMBINED FACTOR).

LEGEND:

- GPS OBSERVED BASE LINE.
- REPEAT BASELINE

GRAPHIC SCALE



SCALE : 1" = 1000'

SEE SHEET 11 OF 12

Copy 90/64

RECORD OF SURVEY

THOSE PORTIONS OF SECTION 26 OF TOWNSHIP 2 SOUTH, RANGE 3 WEST, SECTION 34 OF TOWNSHIP 2 SOUTH, RANGE 4 WEST, SECTIONS 8, 9, 10, 11, 14, 15, 16, 26, 34 AND 35 OF TOWNSHIP 2 SOUTH, RANGE 5 WEST, SECTION 6, OF TOWNSHIP 3 SOUTH, RANGE 2 WEST, SECTIONS 1, 2, 3, 4, 5 AND 6 OF TOWNSHIP 3 SOUTH, RANGE 3 WEST, SECTIONS 1, 2, 3, 4, 10 AND 11 OF TOWNSHIP 3 SOUTH, RANGE 4 WEST, SECTIONS 3, 4, 7, 8, 9, 18, 31 AND 33 OF TOWNSHIP 3 SOUTH, RANGE 5 WEST, AND SECTION 2, 12, 13, 22, 23, 24 AND 33 OF TOWNSHIP 3 SOUTH, RANGE 6 WEST, ALL OF SAN BERNARDINO BASE AND MERIDIAN.

DATE OF SURVEY: AUGUST, 1990 PSOMAS AND ASSOCIATES

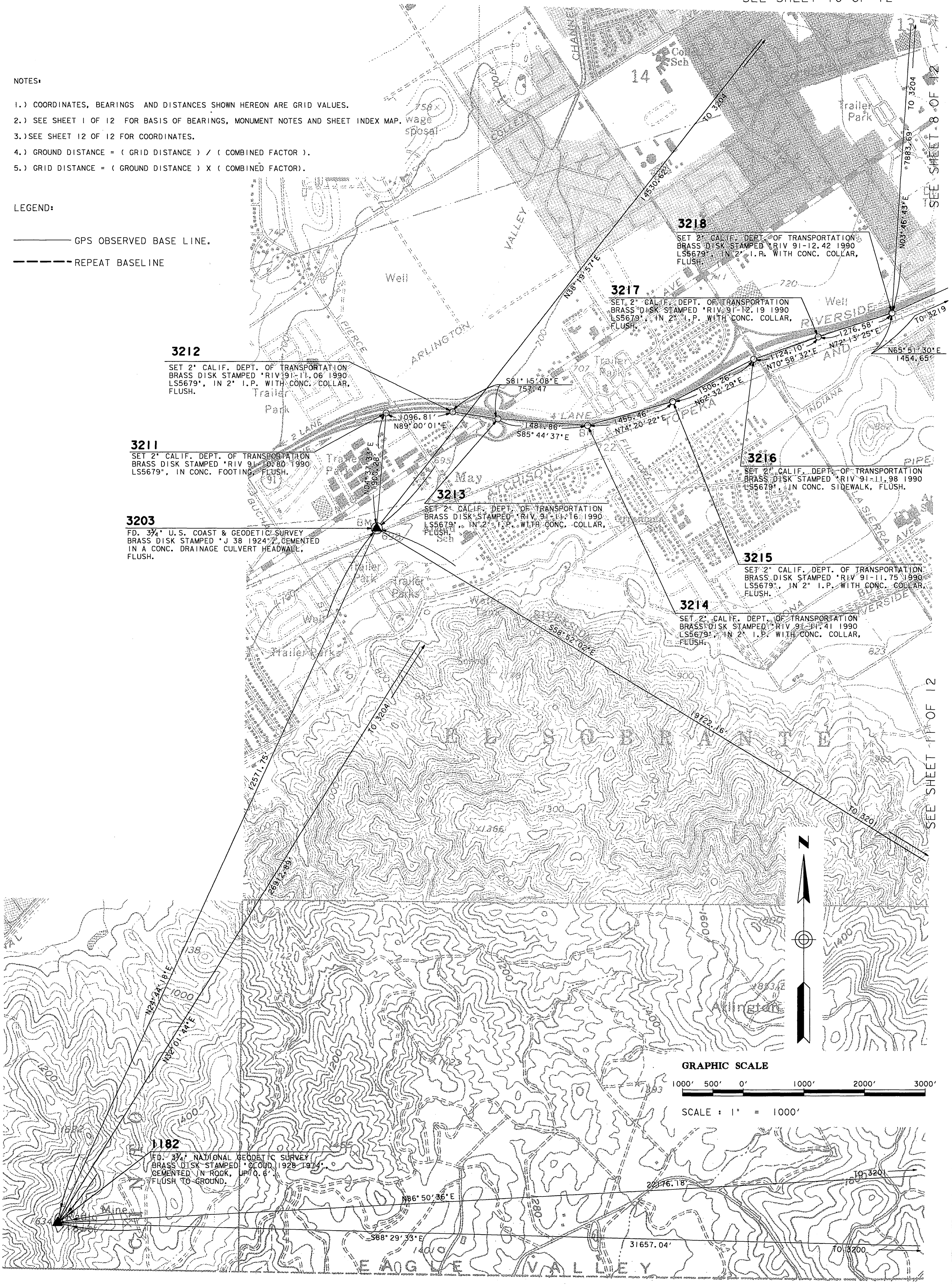
SEE SHEET 10 OF 12

NOTES:

- 1.) COORDINATES, BEARINGS AND DISTANCES SHOWN HEREON ARE GRID VALUES.
- 2.) SEE SHEET 1 OF 12 FOR BASIS OF BEARINGS, MONUMENT NOTES AND SHEET INDEX MAP.
- 3.) SEE SHEET 12 OF 12 FOR COORDINATES.
- 4.) GROUND DISTANCE = (GRID DISTANCE) / (COMBINED FACTOR).
- 5.) GRID DISTANCE = (GROUND DISTANCE) X (COMBINED FACTOR).

LEGEND:

- GPS OBSERVED BASE LINE.
- REPEAT BASELINE



3212
 SET 2" CALIF. DEPT. OF TRANSPORTATION
 BRASS DISK STAMPED "RIV 91-11-06 1990
 LS5679", IN 2" I.P. WITH CONC. COLLAR,
 FLUSH.

3211
 SET 2" CALIF. DEPT. OF TRANSPORTATION
 BRASS DISK STAMPED "RIV 91-10-80 1990
 LS5679", IN CONC. FOOTING,
 FLUSH.

3203
 FD. 3 3/4" U.S. COAST & GEODETIC SURVEY
 BRASS DISK STAMPED "J 38 1924", CEMENTED
 IN A CONC. DRAINAGE CULVERT HEADWALL,
 FLUSH.

3213
 SET 2" CALIF. DEPT. OF TRANSPORTATION
 BRASS DISK STAMPED "RIV 91-11-16 1990
 LS5679", IN 2" I.P. WITH CONC. COLLAR,
 FLUSH.

3214
 SET 2" CALIF. DEPT. OF TRANSPORTATION
 BRASS DISK STAMPED "RIV 91-11-41 1990
 LS5679", IN 2" I.P. WITH CONC. COLLAR,
 FLUSH.

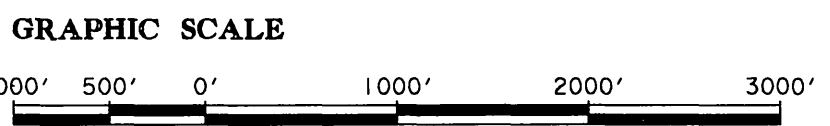
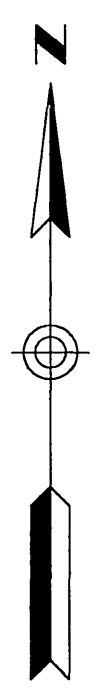
3215
 SET 2" CALIF. DEPT. OF TRANSPORTATION
 BRASS DISK STAMPED "RIV 91-11-75 1990
 LS5679", IN 2" I.P. WITH CONC. COLLAR,
 FLUSH.

3216
 SET 2" CALIF. DEPT. OF TRANSPORTATION
 BRASS DISK STAMPED "RIV 91-11-98 1990
 LS5679", IN CONC. SIDEWALK, FLUSH.

3217
 SET 2" CALIF. DEPT. OF TRANSPORTATION
 BRASS DISK STAMPED "RIV 91-12-19 1990
 LS5679", IN 2" I.P. WITH CONC. COLLAR,
 FLUSH.

3218
 SET 2" CALIF. DEPT. OF TRANSPORTATION
 BRASS DISK STAMPED "RIV 91-12-42 1990
 LS5679", IN 2" I.P. WITH CONC. COLLAR,
 FLUSH.

1182
 FD. 3 3/4" NATIONAL GEODETIC SURVEY
 BRASS DISK STAMPED "CLOUD 1928 1974",
 CEMENTED IN ROCK, UP 0.6'
 FLUSH TO GROUND.



SCALE: 1" = 1000'

SEE SHEET 8 OF 12

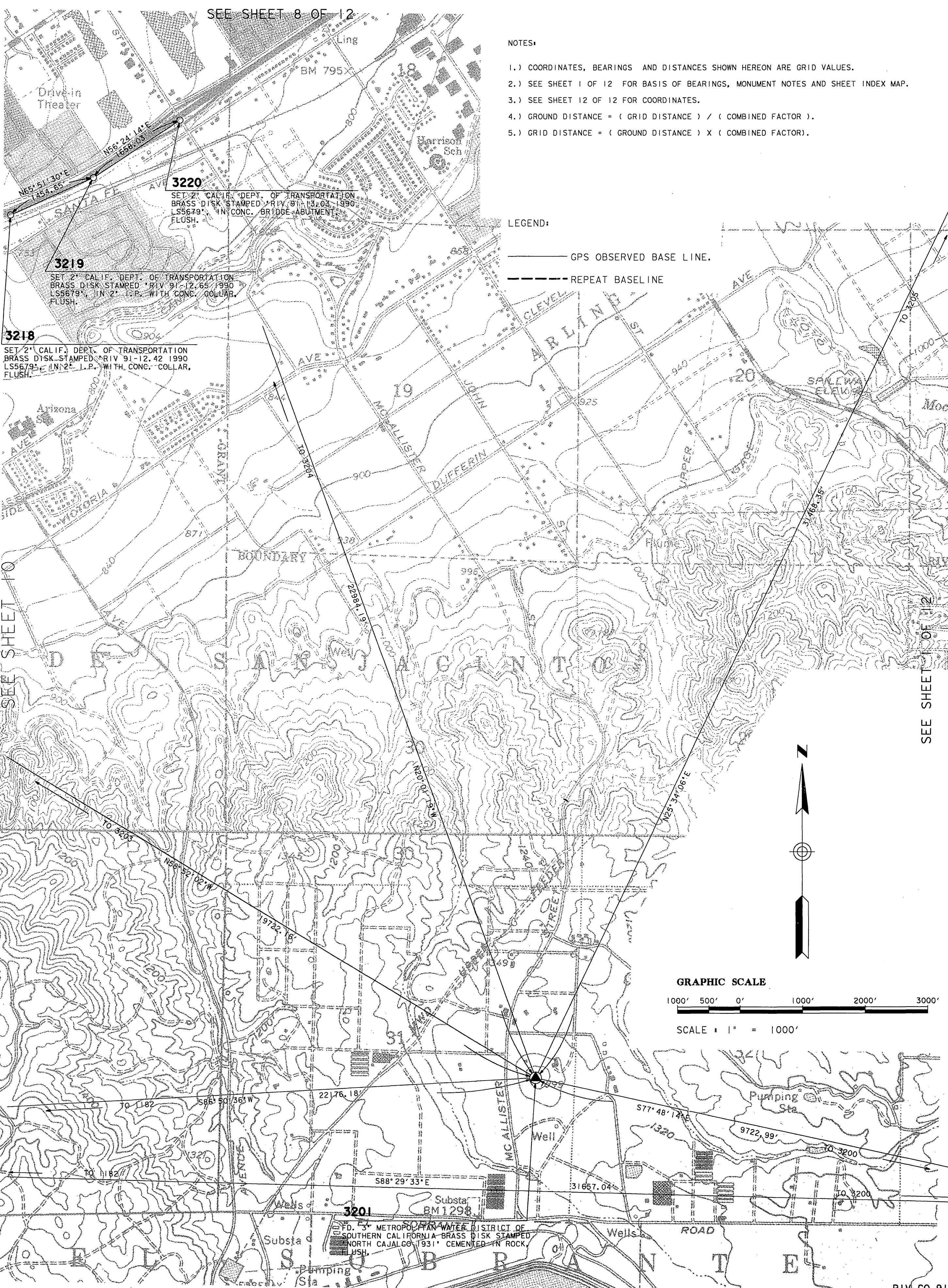
SEE SHEET 11 OF 12

Copy 90/65

RECORD OF SURVEY

THOSE PORTIONS OF SECTION 26 OF TOWNSHIP 2 SOUTH, RANGE 3 WEST, SECTION 34 OF TOWNSHIP 2 SOUTH, RANGE 4 WEST, SECTIONS 8, 9, 10, 11, 14, 15, 16, 26, 34 AND 35 OF TOWNSHIP 2 SOUTH, RANGE 5 WEST, SECTION 6, OF TOWNSHIP 3 SOUTH, RANGE 2 WEST, SECTIONS 1, 2, 3, 4, 5 AND 6 OF TOWNSHIP 3 SOUTH, RANGE 3 WEST, SECTIONS 1, 2, 3, 4, 10 AND 11 OF TOWNSHIP 3 SOUTH, RANGE 4 WEST, SECTIONS 3, 4, 7, 8, 9, 18, 31 AND 33 OF TOWNSHIP 3 SOUTH, RANGE 5 WEST, AND SECTION 2, 12, 13, 22, 23, 24 AND 33 OF TOWNSHIP 3 SOUTH, RANGE 6 WEST, ALL OF SAN BERNARDINO BASE AND MERIDIAN.

DATE OF SURVEY: AUGUST, 1990 PSOMAS AND ASSOCIATES



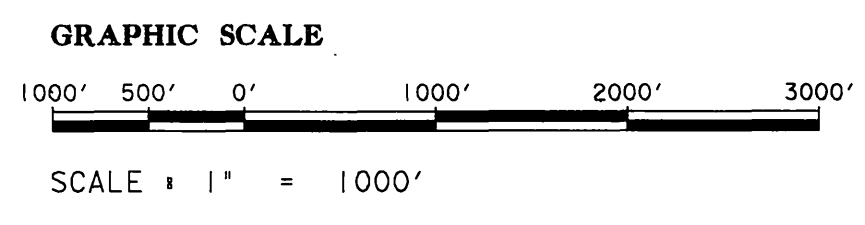
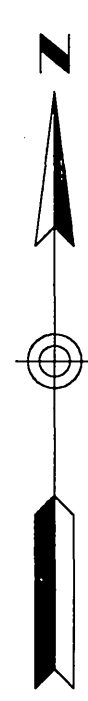
SEE SHEET 8 OF 12

- NOTES:
- 1.) COORDINATES, BEARINGS AND DISTANCES SHOWN HEREON ARE GRID VALUES.
 - 2.) SEE SHEET 1 OF 12 FOR BASIS OF BEARINGS, MONUMENT NOTES AND SHEET INDEX MAP.
 - 3.) SEE SHEET 12 OF 12 FOR COORDINATES.
 - 4.) GROUND DISTANCE = (GRID DISTANCE) / (COMBINED FACTOR).
 - 5.) GRID DISTANCE = (GROUND DISTANCE) X (COMBINED FACTOR).

- LEGEND:
- GPS OBSERVED BASE LINE.
 - - - REPEAT BASELINE

SEE SHEET 10

SEE SHEET 12



3201
 S.D. 3" METROPOLITAN WATER DISTRICT OF SOUTHERN CALIFORNIA-BRASS DISK STAMPED NORTH CAJAL CO. 1931' CEMENTED IN ROCK FLUSH.

Copy

RECORD OF SURVEY

THOSE PORTIONS OF SECTION 26 OF TOWNSHIP 2 SOUTH, RANGE 3 WEST, SECTION 34 OF TOWNSHIP 2 SOUTH, RANGE 4 WEST, SECTIONS 8, 9, 10, 11, 14, 15, 16, 26, 34 AND 35 OF TOWNSHIP 2 SOUTH, RANGE 5 WEST, SECTION 6, OF TOWNSHIP 3 SOUTH, RANGE 2 WEST, SECTIONS 1, 2, 3, 4, 5 AND 6 OF TOWNSHIP 3 SOUTH, RANGE 3 WEST, SECTIONS 1, 2, 3, 4, 10 AND 11 OF TOWNSHIP 3 SOUTH, RANGE 4 WEST, SECTIONS 3, 4, 7, 8, 9, 18, 31 AND 33 OF TOWNSHIP 3 SOUTH, RANGE 5 WEST, AND SECTION 2, 12, 13, 22, 23, 24 AND 33 OF TOWNSHIP 3 SOUTH, RANGE 6 WEST, ALL OF SAN BERNARDINO BASE AND MERIDIAN.

DATE OF SURVEY: AUGUST, 1990 PSOMAS AND ASSOCIATES

PRIMARY STATIONS (FIXED):

Table with columns: PT. NO., STATION NAME, NORTH AMERICAN DATUM 1983 (LATITUDE, LONGITUDE), CALIFORNIA COORDINATE SYSTEM 1983: ZONE 6 (NORTH (Y), EAST (X), U.S. SURVEY FEET, CONVERGENCE, COMBINED FACTOR). Rows include stations like CLSA 87, Z 749 1945, JESSIE 1964, SYCAMORE 1964, 601-11-68 RESET 1974, CAJALCO NORTHEAST BASE MWD 1932, NORTH CAJALCO MWD 1931, J 38 1924, RIV 91-17.44 1990 LS 5679, RIV 60-15.85 1990 LS 5679, RIV 60-18.37 1990 LS 5679, WORTH 1964.

SECONDARY STATIONS:

Table with columns: PT. NO., STATION NAME, NORTH AMERICAN DATUM 1983 (LATITUDE, LONGITUDE), CALIFORNIA COORDINATE SYSTEM 1983: ZONE 6 (NORTH (Y), EAST (X), U.S. SURVEY FEET, CONVERGENCE, COMBINED FACTOR). Rows include stations like RIV 91-20.13 1990 LS 5679, RIV 91-10.80 1990 LS 5679, RIV 91-11.06 1990 LS 5679, RIV 91-11.16 1990 LS 5679, RIV 91-11.41 1990 LS 5679, RIV 91-11.75 1990 LS 5679, RIV 91-11.98 1990 LS 5679, RIV 91-12.19 1990 LS 5679, RIV 91-12.42 1990 LS 5679, RIV 91-12.65 1990 LS 5679, RIV 91-13.03 1990 LS 5679, RIV 91-13.33 1990 LS 5679, RIV 91-13.56 1990 LS 5679, RIV 91-14.08 1990 LS 5679, RIV 91-14.33 1990 LS 5679, RIV 91-14.60 1990 LS 5679, RIV 91-14.85 1990 LS 5679, RIV 91-15.10 1990 LS 5679, RIV 91-15.36 1990 LS 5679, RIV 91-15.63 1990 LS 5679, RIV 91-15.86 1990 LS 5679, RIV 91-16.12 1990 LS 5679, RIV 91-16.38 1990 LS 5679, RIV 91-16.65 1990 LS 5679, RIV 91-16.98 1990 LS 5679, RIV 91-17.15 1990 LS 5679, RIV 91-17.50 1990 LS 5679, RIV 91-17.85 1990 LS 5679, RIV 91-18.01 1990 LS 5679, RIV 91-18.24 1990 LS 5679, RIV 91-18.44 1990 LS 5679, RIV 91-18.63 1990 LS 5679, RIV 91-18.98 1990 LS 5679, RIV 91-19.17 1990 LS 5679, RIV 91-19.39 1990 LS 5679, RIV 91-19.54 1990 LS 5679, RIV 91-19.63 1990 LS 5679, RIV 91-19.68 1990 LS 5679, RIV 91-19.90 1990 LS 5679, RIV 60-14.23 1990 LS 5679, RIV 60-13.16 1990 LS 5679, RIV 60-11.44 1990 LS 5679, RIV 60-11.07 1990 LS 5679, RIV 60-7.51 1990 LS 5679, RIV 60-7.85 1990 LS 5679, RIV 60-8.11 1990 LS 5679, RIV 60-8.45 1990 LS 5679, CL IMP 465+22.12 POT=CL, RIV 60-9.25 1990 LS 5679, RIV 60-9.56 1990 LS 5679, RIV 60-9.73 1990 LS 5679, CL IMP 525+96.70 POC=CL, RIV 60-10.24 1990 LS 5679, RIV 60-10.46 1990 LS 5679, RIV 60-10.70 1990 LS 5679, RIV 60-14.46 1990 LS 5679, RIV 60-14.78 1990 LS 5679, RIV 60-15.07 1990 LS 5679, RIV 60-15.37 1990 LS 5679, RIV 60-15.55 1990 LS 5679, RIV 60-16.24 1990 LS 5679, RIV 60-16.42 1990 LS 5679, RIV 60-16.82 1990 LS 5679, RIV 60-17.12 1990 LS 5679, BM 28-A-63, RIV 60-17.72 1990 LS 5679, RIV 60-18.02 1990 LS 5679, BM 35-A-89, RIV 60-19.12 1990 LS 5679, RIV 60-19.47 1990 LS 5679, RIV 60-19.74 1990 LS 5679, BM 42-A-63, RIV 60-20.37 1990 LS 5679, RIV 60-20.60 1990 LS 5679, RIV 60-20.80 1990 LS 5679, RIV 60-21.10 1990 LS 5679, RIV 60-21.37 1990 LS 5679, RIV 60-21.61 1990 LS 5679, RIV 60-21.79 1990 LS 5679, RIV 60-22.10 1990 LS 5679, LA CLOUD 1928 1974, LA SIERRA 1929, LA SIERRA 1929, LA SIERRA 1929, FAULT L 1950, FAULT L 1950.

NOTES:

- 1.) COORDINATES, BEARINGS AND DISTANCES SHOWN HEREON ARE GRID VALUES.
2.) SEE SHEET 1 OF 12 FOR BASIS OF BEARINGS, MONUMENT NOTES AND SHEET INDEX MAP.
3.) GROUND DISTANCE = (GRID DISTANCE) / (COMBINED FACTOR).
4.) GRID DISTANCE = (GROUND DISTANCE) X (COMBINED FACTOR).
5.) STATIONS 3203, 3204, 3205, 3206, 3208 AND 3209 ARE UNCONSTRAINED STATIONS IN PRIMARY NET, AND ARE CONSTRAINED STATION IN SECONDARY NET.
6.) STATIONS "CLOUD 1928 1974", "(1182)", "LA SIERRA 1929", (3204) AND "FAULT L 1950" (3207), TO PUBLISHED NAD 83 COORDINATES INTRODUCED AN UNACCEPTABLE AMOUNT OF SYSTEMATIC ERROR INTO THE NET WORK ADJUSTMENT AND WERE THEREFORE UNCONSTRAINED IN THE ADJUSTMENT.