

IN THE CITIES OF CORONA, NORCO, AND RIVERSIDE, AND THE UNINCORPORATED TERRITORY OF RIVERSIDE COUNTY, AND THE UNINCORPORATED TERRITORY OF ORANGE COUNTY, ALL IN THE STATE OF CALIFORNIA.

RECORD OF SURVEY

THOSE PORTIONS OF SECTION 36 OF TOWNSHIP 3 SOUTH, RANGE 8 WEST, SECTIONS 17 AND 31 OF TOWNSHIP 3 SOUTH, RANGE 7 WEST, SECTION 7 AND 18 OF TOWNSHIP 3 SOUTH, RANGE 5 WEST, ALL OF SAN BERNARDINO MERIDIAN, AND PORTIONS OF LA SIERRA YORBA RANCHO AND EL SOBRANTE DE SAN JACINTO RANCHO.

DATE OF SURVEY: MAY, 1991 PSOMAS AND ASSOCIATES

RECORDER'S STATEMENT:
FILED THIS 28TH DAY OF APRIL, 1992
AT 2:00 P.M. IN BOOK 71 OF RECORDS OF SURVEY, AT PAGES 69-70 AT THE REQUEST OF THE COUNTY SURVEYOR.
NO. 20828
FEE \$14.00
WILLIAM E. CONERLY
COUNTY RECORDER
By: *Sarita Lagan*, DEPUTY

COUNTY SURVEYOR'S STATEMENT:

THIS MAP HAS BEEN EXAMINED IN ACCORDANCE WITH SECTION 8766 OF THE LAND SURVEYORS' ACT THIS 7TH DAY OF April, 1992.

Mark S. Bernas Deputy
GERALD A. STAYNER, COUNTY SURVEYOR
L.S. 4568
LICENSE EXPIRES: 9-30-95



SURVEYOR'S STATEMENT:

THIS MAP CORRECTLY REPRESENTS A SURVEY MADE BY ME OR UNDER MY DIRECTION IN CONFORMANCE WITH THE REQUIREMENTS OF THE LAND SURVEYORS' ACT, AT THE REQUEST OF THE RIVERSIDE COUNTY TRANSPORTATION COMMISSION IN MAY 1990.

Kari J. Launen
KARI J. LAUNEN LS 5679
LICENSE EXPIRES: 9-30-1995

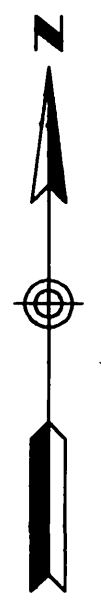


STATEMENT OF PURPOSE:

THE PURPOSE OF THIS SURVEY IS TO ESTABLISH A HORIZONTAL CONTROL NETWORK FOR TRANSPORTATION DEVELOPMENT IN THE COUNTY OF RIVERSIDE AND THE COUNTY OF ORANGE WHICH IS CONSTRAINED TO FIRST ORDER NATIONAL GEODETIC CONTROL BASED ON THE 1983 NORTH AMERICAN DATUM AND ADJUSTMENT, CALIFORNIA STATE PLANE COORDINATE SYSTEM LAMBERT ZONE VI, USING GLOBAL POSITIONING SURVEY TECHNIQUES.

NOTES:

- SEE SHEET 5 OF 5 FOR COORDINATES.
- ADDITIONAL INFORMATION REGARDING FOUND MONUMENTS STATED PER CALTRANS FILE NO. 261993 CAN BE OBTAINED FROM CALTRANS DISTRICT NO. 8, SAN BERNARDINO OFFICE.
- THE "TO REACH DESCRIPTIONS" TO THE MONUMENT AND THE REDUCTION SOFTWARE AND VERSION REPORT CAN BE OBTAINED FROM THE RIVERSIDE COUNTY SURVEYOR'S OFFICE.
- THE TOPOGRAPHIC DATA AS SHOWN IS COMPILED FROM THE REDUCTION AND ENLARGEMENT OF THE UNITED STATES DEPARTMENT OF INTERIOR GEOLOGICAL SURVEY, 7.5 MINUTE SERIES QUADRANGLE SHEETS.
- THE TOPOGRAPHIC DATA AS SHOWN IS FOR REFERENCE ONLY, AND IS NOT FOR THE PURPOSE OF LOCATING ANY CADASTRAL BOUNDARY.
- ALL POINTS SHOWN ON THIS MAP HAVE POSITIONS THAT WERE OCCUPIED AND HAVE COORDINATE VALUES ESTABLISHED BY G.P.S. EQUIPMENT AND METHODS, NO OTHER CONVENTIONAL METHODS WERE UTILIZED.
- ALL BEARINGS AND DISTANCES SHOWN ARE CALCULATED INVERSES BASED UPON STATE PLANE COORDINATES.
- ALL MONUMENTS SHOWN ARE AT ARBITRARY LOCATIONS.
- REPEAT BASE LINES ARE LINES DETERMINED BY TWO OR MORE INDEPENDENT OBSERVATION SESSIONS.
- POSITIONS WERE ESTABLISHED BY STATIC RELATIVE POSITIONING USING 3 TRIMBLE 4000SL RECEIVERS, SERIAL NUMBERS 2737A00103, 2737A00107, 2811A00170, TO STANDARDS SPECIFIED IN THE FEDERAL GEODETIC CONTROL COMMITTEE (FGCC) GEOMETRIC GEODETIC ACCURACY STANDARDS AND SPECIFICATIONS FOR USING GPS RELATIVE POSITIONING TECHNIQUES, DRAFT VERSION 5.0 PUBLISHED MAY 1988.



GRAPHIC SCALE

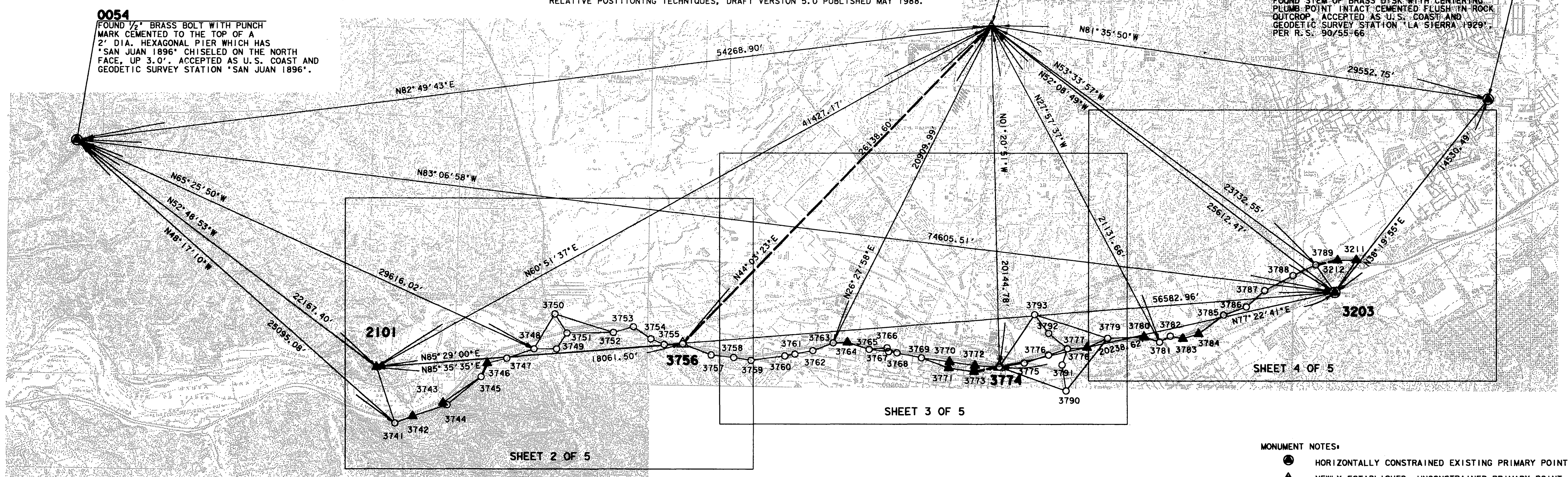


SCALE: 1" = 4000'

0054
FOUND 1/2" BRASS BOLT WITH PUNCH MARK CEMENTED TO THE TOP OF A 2' DIA. HEXAGONAL PIER WHICH HAS "SAN JUAN 1896" CHISELED ON THE NORTH FACE, UP 3.0". ACCEPTED AS U.S. COAST AND GEODETIC SURVEY STATION "SAN JUAN 1896".

1002
FOUND BRASS SHANK CEMENTED FLUSH IN ROCK OUT CROPPING, NO REFERENCE. ACCEPTED AS U.S. COAST AND GEODETIC SURVEY STATION "NORCO".

3204
FOUND STEM OF BRASS DISK WITH CENTERING PLUMB POINT INTACT CEMENTED FLUSH IN ROCK OUTCROP, ACCEPTED AS U.S. COAST AND GEODETIC SURVEY STATION "LA SIERRA 1929". PER R.S. 90/55-66



SHEET 4 OF 5

SHEET 3 OF 5

SHEET 2 OF 5

- MONUMENT NOTES:
- HORIZONTALLY CONSTRAINED EXISTING PRIMARY POINT.
 - ▲ NEWLY ESTABLISHED UNCONSTRAINED PRIMARY POINT AND CONSTRAINED SECONDARY POINT.
 - ▲ FOUND MONUMENT AS NOTED FOR SECONDARY POINT.
 - NEWLY ESTABLISHED SECONDARY POINT.

BASIS OF BEARINGS:

THIS SURVEY'S BASIS OF BEARINGS IS DETERMINED BY THE HORIZONTAL CONTROL NETWORK OF THE COUNTY OF RIVERSIDE AS DEFINED BY THE NATIONAL GEODETIC SURVEY'S 1983 NORTH AMERICAN DATUM AND ADJUSTMENT HOLDING THE STATIONS FIXED AS SHOWN ON SHEET 5 OF 5.

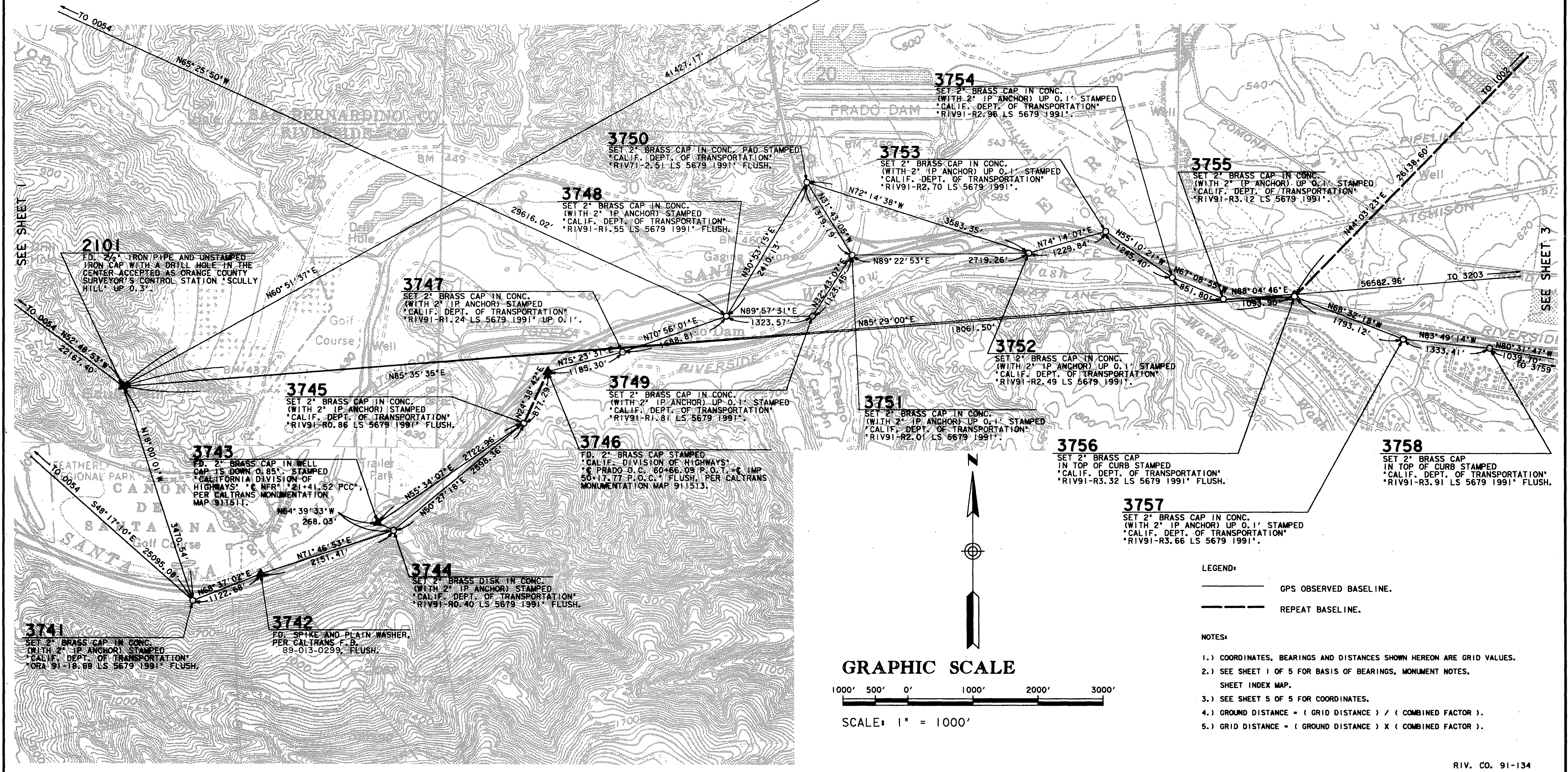
NOTE: THIS MAP WAS PREPARED UNDER THE DIRECTION AND SUPERVISION OF CALIFORNIA DEPARTMENT OF TRANSPORTATION, DISTRICT 8, SURVEY SECTION. ALL SET MONUMENTS ARE CALIFORNIA DEPARTMENT OF TRANSPORTATION STANDARD MONUMENTS.

IN THE CITIES OF CORONA, NORCO, AND RIVERSIDE, AND THE UNINCORPORATED TERRITORY OF RIVERSIDE COUNTY, AND THE UNINCORPORATED TERRITORY OF ORANGE COUNTY, ALL IN THE STATE OF CALIFORNIA.

RECORD OF SURVEY

THOSE PORTIONS OF SECTION 36 OF TOWNSHIP 3 SOUTH, RANGE 8 WEST, SECTIONS 17 AND 31 OF TOWNSHIP 3 SOUTH, RANGE 7 WEST, SECTION 7 AND 18 OF TOWNSHIP 3 SOUTH, RANGE 5 WEST, ALL OF SAN BERNARDINO MERIDIAN, AND PORTIONS OF LA SIERRA YORBA RANCHO AND EL SOBRANTE DE SAN JACINTO RANCHO.

DATE OF SURVEY: MAY, 1991 PSOMAS AND ASSOCIATES



R/S 9/1/67

R/S 9/1/67

R/S 91/68

IN THE CITIES OF CORONA, NORCO, AND RIVERSIDE, AND THE UNINCORPORATED TERRITORY OF RIVERSIDE COUNTY,
AND THE UNINCORPORATED TERRITORY OF ORANGE COUNTY, ALL IN THE STATE OF CALIFORNIA.

RECORD OF SURVEY

THOSE PORTIONS OF SECTION 36 OF TOWNSHIP 3 SOUTH, RANGE 8 WEST, SECTIONS 17
AND 31 OF TOWNSHIP 3 SOUTH, RANGE 7 WEST, SECTION 7 AND 18 OF TOWNSHIP 3
SOUTH, RANGE 5 WEST, ALL OF SAN BERNARDINO MERIDIAN, AND PORTIONS OF LA
SIERRA YORBA RANCHO AND EL SOBRANTE DE SAN JACINTO RANCHO.

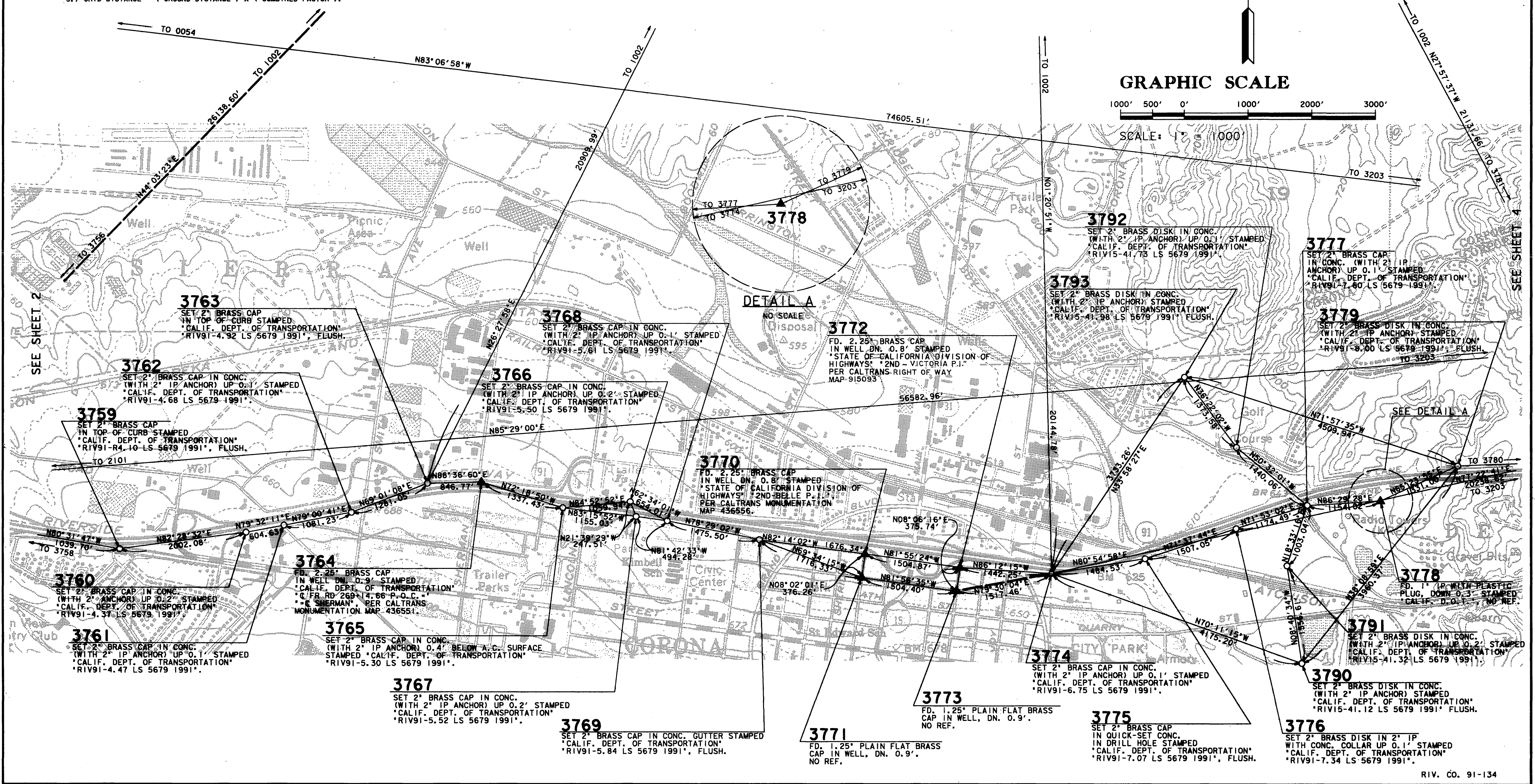
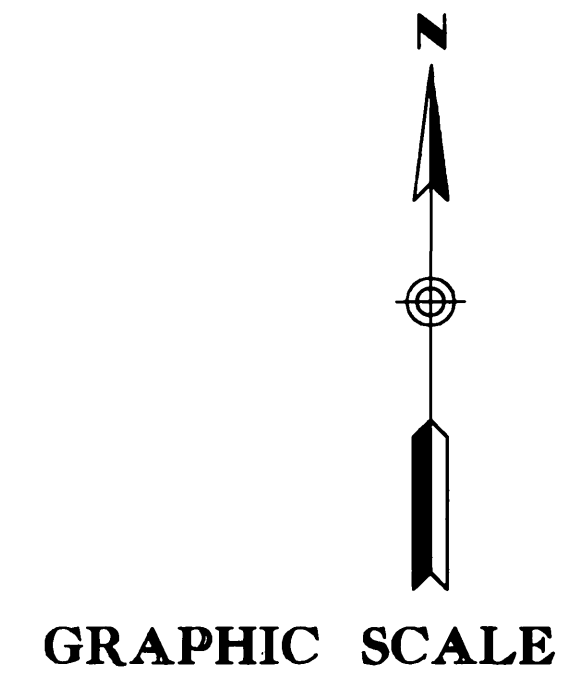
DATE OF SURVEY: MAY, 1991 PSOMAS AND ASSOCIATES

LEGEND:

- GPS OBSERVED BASELINE.
- REPEAT BASELINE.

NOTES:

- COORDINATES, BEARINGS AND DISTANCES SHOWN HEREON ARE GRID VALUES.
- SEE SHEET 1 OF 5 FOR BASIS OF BEARINGS, MONUMENT NOTES, SHEET INDEX MAP.
- SEE SHEET 5 OF 5 FOR COORDINATES.
- GROUND DISTANCE = (GRID DISTANCE) / (COMBINED FACTOR).
- GRID DISTANCE = (GROUND DISTANCE) X (COMBINED FACTOR).



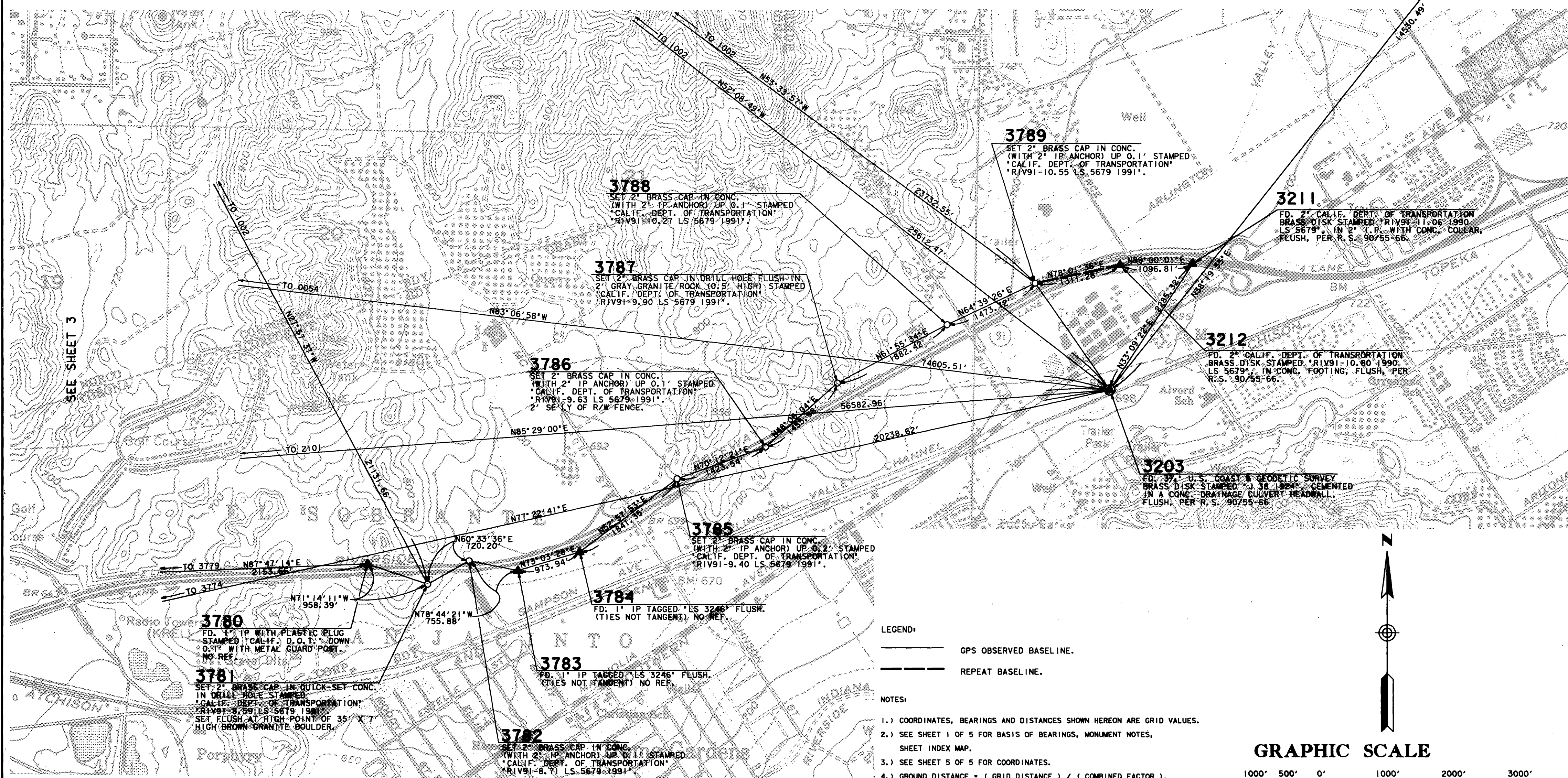
R/S 91/68

IN THE CITIES OF CORONA, NORCO, AND RIVERSIDE, AND THE UNINCORPORATED TERRITORY OF RIVERSIDE COUNTY, AND THE UNINCORPORATED TERRITORY OF ORANGE COUNTY, ALL IN THE STATE OF CALIFORNIA.

RECORD OF SURVEY

THOSE PORTIONS OF SECTION 36 OF TOWNSHIP 3 SOUTH, RANGE 8 WEST, SECTIONS 17 AND 31 OF TOWNSHIP 3 SOUTH, RANGE 7 WEST, SECTION 7 AND 18 OF TOWNSHIP 3 SOUTH, RANGE 5 WEST, ALL OF SAN BERNARDINO MERIDIAN, AND PORTIONS OF LA SIERRA YORBA RANCHO AND EL SOBRANTE DE SAN JACINTO RANCHO.

DATE OF SURVEY: MAY, 1991 PSOMAS AND ASSOCIATES



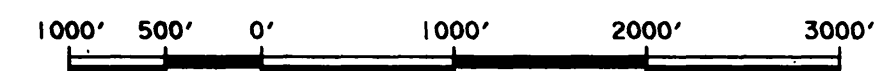
LEGEND:

- GPS OBSERVED BASELINE.
- - - REPEAT BASELINE.

NOTES:

- 1.) COORDINATES, BEARINGS AND DISTANCES SHOWN HEREON ARE GRID VALUES.
- 2.) SEE SHEET 1 OF 5 FOR BASIS OF BEARINGS, MONUMENT NOTES, SHEET INDEX MAP.
- 3.) SEE SHEET 5 OF 5 FOR COORDINATES.
- 4.) GROUND DISTANCE = (GRID DISTANCE) / (COMBINED FACTOR).
- 5.) GRID DISTANCE = (GROUND DISTANCE) X (COMBINED FACTOR).

GRAPHIC SCALE



SCALE: 1" = 1000'

R/S 91/69

91/69

R/S 91/69

SEE SHEET 3

IN THE CITIES OF CORONA, NORCO, AND RIVERSIDE, AND THE UNINCORPORATED TERRITORY OF RIVERSIDE COUNTY, AND THE UNINCORPORATED TERRITORY OF ORANGE COUNTY, ALL IN THE STATE OF CALIFORNIA.

RECORD OF SURVEY

THOSE PORTIONS OF SECTION 36 OF TOWNSHIP 3 SOUTH, RANGE 8 WEST, SECTIONS 17 AND 31 OF TOWNSHIP 3 SOUTH, RANGE 7 WEST, SECTION 7 AND 18 OF TOWNSHIP 3 SOUTH, RANGE 5 WEST, ALL OF SAN BERNARDINO MERIDIAN, AND PORTIONS OF LA SIERRA YORBA RANCHO AND EL SOBRANTE DE SAN JACINTO RANCHO.

DATE OF SURVEY: MAY, 1991 PSOMAS AND ASSOCIATES

NOTES:

- 1.) COORDINATES, BEARINGS AND DISTANCES SHOWN HEREON ARE GRID VALUES.
- 2.) SEE SHEET 1 OF 5 FOR BASIS OF BEARINGS, MONUMENT NOTES, SHEET INDEX MAP.
- 3.) SEE SHEET 5 OF 5 FOR COORDINATES.
- 4.) GROUND DISTANCE = (GRID DISTANCE) / (COMBINED FACTOR).
- 5.) GRID DISTANCE = (GROUND DISTANCE) X (COMBINED FACTOR).

PRIMARY STATIONS (FIXED):

POINT NUMBER	NAME	NORTH AMERICAN DATUM 1983		CALIFORNIA COORDINATE SYSTEM 1983: ZONE 6		
		LATITUDE	LONGITUDE	NORTH (Y) U. S. SURVEY FEET	EAST (X) CONVERGENCE	COMBINED FACTOR
0054	SAN JUAN 1886	33°54'49.52138"N	117°44'17.20438"W	2279340.723	6110178.827	-0°49'03.875" 0.99992011
3203	J 38 1924	33°53'30.66807"N	117°29'37.16795"W	2270398.652	6184246.510	-0°41'00.282" 0.99996807 FIXED PER R.S. 90/55-66
3204	LA SIERRA 1929	33°55'24.46662"N	117°27'51.84626"W	2281796.791	6193258.584	-0°40'02.405" 0.99995768 FIXED PER R.S. 90/55-66

SECONDARY STATIONS:

POINT NUMBER	NAME	NORTH AMERICAN DATUM 1983		CALIFORNIA COORDINATE SYSTEM 1983: ZONE 6		
		LATITUDE	LONGITUDE	NORTH (Y) U. S. SURVEY FEET	EAST (X) CONVERGENCE	COMBINED FACTOR
▲ 1002	NORCO 1958	33°56'03.68190"N	117°33'39.38916"W	2286115.339	6164023.058	-0°43'13.385" 0.99996027 NAD 83 PUBLISHED VALUE
▲ 1002	NORCO 1958	33°56'03.68266"N	117°33'39.38738"W	2286115.413	6164023.210	-0°43'13.385" 0.99996027 PRIMARY NETWORK ADJUSTED VALUE
▲ 2101	SCULLY HILL OCS 1965	33°52'39.44168"N	117°40'45.50102"W	2265943.007	6127839.109	-0°47'07.540" 0.99995430 NAD 83 PUBLISHED VALUE
▲ 2101	SCULLY HILL OCS 1965	33°52'39.44022"N	117°40'45.49921"W	2265942.859	6127839.261	-0°47'07.540" 0.99995430 PRIMARY NETWORK ADJUSTED VALUE
▲ 3211	RIV91-10.80 1990 LS5679	33°53'49.42210"N	117°29'35.61805"W	2272292.743	6184399.763	-0°40'59.430" 0.99996829
▲ 3212	RIV91-11.06 1990 LS5679	33°53'49.74055"N	117°29'22.61225"W	2272311.879	6185496.402	-0°40'52.283" 0.99996800
○ 3741	ORA91-18.69 1991 LS5679	33°52'06.93641"N	117°40'32.24522"W	2262642.186	6128911.738	-0°47'00.258" 0.99997710
▲ 3742	ORA91-18.90	33°52'11.12654"N	117°40'19.91504"W	2263051.511	6129957.141	-0°46'53.483" 0.99997688
▲ 3743	Q NFR 21+41.52 PCC	33°52'19.15726"N	117°39'58.68154"W	2263838.858	6131758.459	-0°46'41.815" 0.99997544
○ 3744	RIV91-R0.40 1991 LS5679	33°52'18.05504"N	117°39'55.79044"W	2263724.139	6132000.702	-0°46'40.226" 0.99997412
○ 3745	RIV91-R0.86 1991 LS5679	33°52'34.68761"N	117°39'32.29529"W	2265378.474	6134004.361	-0°46'27.315" 0.99996853
▲ 3746	Q PRADO O.C. 60+66.09 P.O.T. = Q IMP 50+17.77 P.O.C.	33°52'42.62385"N	117°39'28.08465"W	2266175.850	6134370.184	-0°46'25.001" 0.99997225
○ 3747	RIV91-R1.24 1991 LS5679	33°52'45.73382"N	117°39'14.52992"W	2266474.786	6135517.164	-0°46'17.553" 0.99997521
○ 3748	RIV91-R1.55 1991 LS5679	33°52'51.40297"N	117°38'55.68799"W	2267026.456	6137113.328	-0°46'07.199" 0.99997663
○ 3749	RIV91-R1.81 1991 LS5679	33°52'51.58780"N	117°38'39.99101"W	2267027.412	6138436.894	-0°45'58.573" 0.99997605
○ 3750	RIV71-2.51 1991 LS5679	33°53'12.02600"N	117°38'41.34268"W	2269094.775	6138350.580	-0°45'59.316" 0.99997575
○ 3751	RIV91-R2.01 1991 LS5679	33°53'01.01765"N	117°38'32.93901"W	2267972.610	6139044.134	-0°45'54.698" 0.99997687
○ 3752	RIV91-R2.49 1991 LS5679	33°53'01.66612"N	117°38'00.69484"W	2268001.968	6141763.232	-0°45'36.979" 0.99997390
○ 3753	RIV91-R2.70 1991 LS5679	33°53'05.12637"N	117°37'46.70991"W	2268336.099	6142946.808	-0°45'29.294" 0.99997182
○ 3754	RIV91-R2.96 1991 LS5679	33°52'58.22451"N	117°37'34.47353"W	2267624.842	6143969.130	-0°45'22.570" 0.99997191
○ 3755	RIV91-R3.12 1991 LS5679	33°52'55.05484"N	117°37'25.11237"W	2267294.053	6144754.076	-0°45'17.426" 0.99997130
▲ 3756	RIV91-R3.32 1991 LS5679	33°52'55.55979"N	117°37'12.15186"W	2267330.715	6145847.359	-0°45'10.304" 0.99997157
○ 3757	RIV91-R3.66 1991 LS5679	33°52'49.28672"N	117°36'52.25834"W	2266674.654	6147516.145	-0°44'59.372" 0.99996968
○ 3758	RIV91-R3.91 1991 LS5679	33°52'48.03830"N	117°36'36.51412"W	2266531.123	6148841.812	-0°44'50.720" 0.99996830
○ 3759	RIV91-R4.10 1991 LS5679	33°52'46.47832"N	117°36'24.32533"W	2266360.055	6149867.339	-0°44'44.022" 0.99996734
○ 3760	RIV91-4.37 1991 LS5679	33°52'49.32655"N	117°36'00.82619"W	2266622.230	6151852.177	-0°44'31.109" 0.99996694
○ 3761	RIV91-4.47 1991 LS5679	33°52'50.48887"N	117°35'53.79151"W	2266732.039	6152446.755	-0°44'27.243" 0.99996722
○ 3762	RIV91-4.68 1991 LS5679	33°52'52.66313"N	117°35'41.23499"W	2266938.137	6153508.163	-0°44'20.343" 0.99996759
○ 3763	RIV91-4.92 1991 LS5679	33°52'57.35276"N	117°35'27.11919"W	2267396.829	6154704.279	-0°44'12.586" 0.99996835
▲ 3764	Q FR RD 269+14.66 POC = = Q SHERMAN	33°52'57.66256"N	117°35'17.08255"W	2267417.272	6155550.798	-0°44'07.071" 0.99996847
○ 3765	RIV91-5.30 1991 LS5679	33°52'53.80490"N	117°35'01.90861"W	2267010.956	6156825.016	-0°43'58.733" 0.99996841
○ 3766	RIV91-5.50 1991 LS5679	33°52'54.87378"N	117°34'49.40225"W	2267105.525	6157880.729	-0°43'51.860" 0.99996915
○ 3767	RIV91-5.52 1991 LS5679	33°52'52.60985"N	117°34'48.28407"W	2266875.488	6157972.077	-0°43'51.246" 0.99996882
○ 3768	RIV91-5.61 1991 LS5679	33°52'51.96652"N	117°34'42.47242"W	2266804.215	6158461.195	-0°43'48.052" 0.99996923
○ 3769	RIV91-5.84 1991 LS5679	33°52'49.23459"N	117°34'25.28115"W	2266509.643	6159906.990	-0°43'38.605" 0.99996945
▲ 3770	2ND-BELLE P. I.	33°52'47.20204"N	117°34'05.54851"W	2266283.120	6161567.957	-0°43'27.762" 0.99996950
▲ 3771		33°52'43.51015"N	117°34'06.11627"W	2265910.556	6161515.373	-0°43'28.074" 0.99996886
▲ 3772	2ND - VICTORIA P.I.	33°52'45.29662"N	117°33'47.84669"W	2266071.690	6163057.898	-0°43'18.034" 0.99996916
▲ 3773		33°52'41.61040"N	117°33'48.41935"W	2265699.702	6163004.926	-0°43'18.349" 0.99996849
▲ 3774	RIV91-6.75 1991 LS5679	33°52'44.53112"N	117°33'30.76548"W	2265976.208	6164496.983	-0°43'08.648" 0.99996796
○ 3775	RIV91-7.07 1991 LS5679	33°52'47.03121"N	117°33'13.41512"W	2266210.588	6165962.894	-0°42'59.114" 0.99996840
○ 3776	RIV91-7.34 1991 LS5679	33°52'51.90618"N	117°32'56.52308"W	2266685.567	6167393.134	-0°42'49.831" 0.99997014
○ 3777	RIV91-7.60 1991 LS5679	33°52'55.65602"N	117°32'43.33811"W	2267050.765	6168509.400	-0°42'42.586" 0.99997010
▲ 3778	CALIF D.O.T.	33°52'56.49604"N	117°32'29.68742"W	2267121.396	6169661.256	-0°42'35.084" 0.99996864
○ 3779	RIV91-8.00 1991 LS5679	33°53'02.12511"N	117°32'15.41580"W	2267675.493	6170871.433	-0°42'27.242" 0.99996536
▲ 3780	CALIF D.O.T.	33°53'03.20985"N	117°31'49.90385"W	2267758.649	6173023.491	-0°42'13.223" 0.99996377
○ 3781	RIV91-8.59 1991 LS5679	33°53'00.27053"N	117°31'39.09637"W	2267450.369	6173930.942	-0°42'07.284" 0.99996520
○ 3782	RIV91-8.71 1991 LS5679	33°53'03.84803"N	117°31'31.70898"W	2267804.354	6174558.143	-0°42'03.224" 0.99996740
▲ 3783	LS 3246	33°53'02.47759"N	117°31'22.89516"W	2267656.750	6175299.473	-0°41'58.381" 0.99996793
▲ 3784	LS 3246	33°53'05.39738"N	117°31'11.88628"W	2267940.561	6176231.140	-0°41'52.331" 0.99996813
○ 3785	RIV91-9.40 1991 LS5679	33°53'16.54474"N	117°30'54.61236"W	2269049.621	6177701.029	-0°41'42.839" 0.99996552
○ 3786	RIV91-9.63 1991 LS5679	33°53'21.47380"N	117°30'38.79471"W	2269531.694	6179040.458	-0°41'34.147" 0.99996572
○ 3787	RIV91-9.90 1991 LS5679	33°53'31.22133"N	117°30'26.07972"W	2270504.024	6180124.177	-0°41'27.160" 0.99996390
○ 3788	RIV91-10.27 1991 LS5679	33°53'40.18200"N	117°30'06.50474"W	2271389.909	6181785.117	-0°41'16.403" 0.99996683
○ 3789	RIV91-10.55 1991 LS5679	33°53'46.57964"N	117°29'50.79564"W	2272020.709	6183117.009	-0°41'07.771" 0.99996902
○ 3790	RIV15-41.12 1991 LS5679	33°52'31.01804"N	117°32'43.97169"W	2264561.061	6168425.041	-0°42'42.934" 0.99996727
○ 3791	RIV15-41.32 1991 LS5679	33°52'46.21063"N	117°32'46.98327"W	2266099.859	6168190.228	-0°42'44.589" 0.99996798
○ 3792	RIV15-41.73 1991 LS5679	33°53'04.57351"N	117°32'56.65841"W	2267966.104	6167397.679	-0°42'49.905" 0.99996970
○ 3793	RIV15-41.98 1991 LS5679	33°53'15.41380"N	117°33'06.48217"W	2269072.154	6166583.204	-0°42'55.304" 0.99996956