

IN THE CITY AND UNINCORPORATED TERRITORY OF RIVERSIDE COUNTY, STATE OF CALIFORNIA

# RECORD OF SURVEY

OF PORTIONS OF SECTIONS 13 AND 24, T. 3 S., R. 5 W., SAN BERNARDINO MERIDIAN  
 THE METROPOLITAN WATER DISTRICT OF SOUTHERN CALIFORNIA  
 BOX SPRINGS FEEDER (PROPOSED)

JULY 2000 MANUEL M. CORTEZ LS 6599

SEE DETAIL "C" SHEET 2

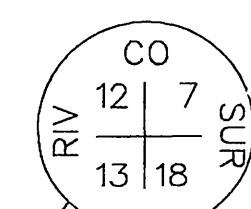
RECORDER'S STATEMENT:  
 FILED THIS 3<sup>rd</sup> DAY OF OCT., 2000,  
 AT 8:00 A.M. IN BOOK 109 OF RECORDS OF SURVEY,  
 AT PAGES 18-19, AT THE REQUEST OF THE COUNTY SURVEYOR.

FEE \$ NO. 2000-389789

GARY L. ORSO, COUNTY ASSESSOR-CLERK-RECORDER  
 BY *Stegan*, DEPUTY

EXEMPT RECORDING REQUEST  
 PER GOVERNMENT CODE 6103

SECTION CORNER  
 FOUND 2" I.P. WITH A 2" BCM STAMPED;  
 1" ABOVE SURFACE. ACCEPTED AS SW  
 CORNER SECTION 7, PER RIVERSIDE COUNTY  
 SURVEYOR TIE BOOK 44, PAGE 42.



N70° 35'56.32"E 9644.69'

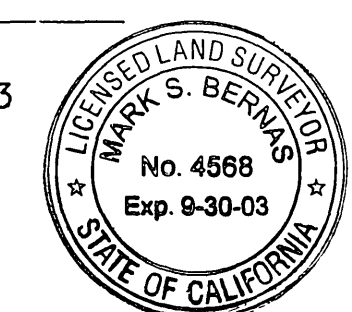
"MFP1"  
 FOUND 3 1/4" MWD BRASS DISK ON A  
 LARGE GRANITE ROCK, 1" ABOVE SURFACE,  
 PER RSB 101/21-23. ZONE 6, NAD 1983  
 (1991.35) COORDINATES  
 N = 2279378.65'  
 E = 6237399.48'  
 CONVERGENCE ANGLE = 0° 35'14"

### COUNTY SURVEYOR'S STATEMENT

THIS MAP HAS BEEN EXAMINED IN ACCORDANCE  
 WITH SECTION 8766 OF THE LAND SURVEYORS'  
 ACT THIS 26<sup>TH</sup> DAY OF Sept., 2000.

*Mark S. Bernas*

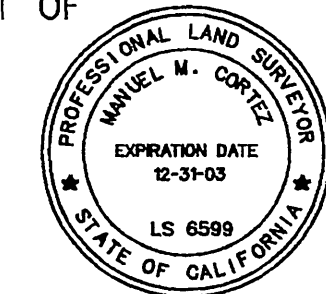
MARK S. BERNAS, COUNTY SURVEYOR  
 PLS 4568 EXPIRES 9-30-03



### SURVEYOR'S STATEMENT

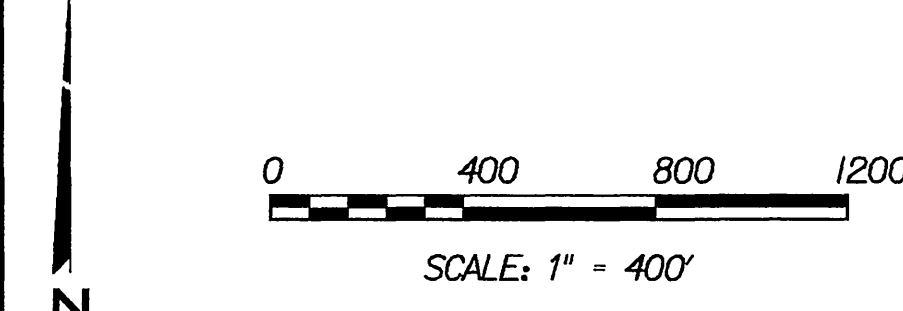
THIS MAP CORRECTLY REPRESENTS A SURVEY MADE BY  
 ME OR UNDER MY DIRECTION IN CONFORMANCE WITH THE  
 REQUIREMENTS OF THE LAND SURVEYORS' ACT, AT THE  
 REQUEST OF THE METROPOLITAN WATER DISTRICT OF  
 SOUTHERN CALIFORNIA, IN AUGUST 2000.

*Manuel M. Cortez*  
 MANUEL M. CORTEZ LS 6599  
 REGISTRATION EXPIRES DECEMBER 31, 2003



CURVE TABLE

|    |                |              |             |                  |              |             |
|----|----------------|--------------|-------------|------------------|--------------|-------------|
| 18 | Δ = 25° 02'57' | R = 970.00'  | L = 429.15' | (Δ = 25° 02'57') | R = 970.00'  | L = 429.15' |
| 19 | Δ = 25° 02'57' | R = 1000.00' | L = 437.15' | (Δ = 25° 02'57') | R = 1000.00' | L = 437.19' |
| 20 | Δ = 25° 02'57' | R = 1030.00' | L = 450.31' | (Δ = 25° 02'57') | R = 1030.00' | L = 450.31' |
| 21 | Δ = 49° 28'54' | R = 970.00'  | L = 834.39' | (Δ = 49° 28'54') | R = 970.00'  | L = 834.39' |
| 22 | Δ = 49° 28'54' | R = 1000.00' | L = 863.62' | (Δ = 49° 28'54') | R = 1000.00' | L = 863.62' |
| 23 | Δ = 49° 28'54' | R = 1030.00' | L = 889.53' | (Δ = 49° 28'54') | R = 1030.00' | L = 889.53' |
| 24 | Δ = 8° 44'15'  | R = 970.00'  | L = 147.92' | (Δ = 8° 44'15')  | R = 970.00'  | L = 147.92' |
| 25 | Δ = 8° 44'15'  | R = 1000.00' | L = 152.50' | (Δ = 8° 44'15')  | R = 1000.00' | L = 152.50' |
| 26 | Δ = 8° 44'15'  | R = 1030.00' | L = 157.07' | (Δ = 8° 44'15')  | R = 1030.00' | L = 157.07' |
| 27 | Δ = 19° 00'23' | R = 970.00'  | L = 321.77' | (Δ = 19° 00'23') | R = 970.00'  | L = 321.77' |
| 28 | Δ = 19° 00'23' | R = 1000.00' | L = 331.72' | (Δ = 19° 00'23') | R = 1000.00' | L = 331.72' |
| 29 | Δ = 19° 00'23' | R = 1030.00' | L = 341.68' | (Δ = 19° 00'23') | R = 1030.00' | L = 341.68' |



COURSE TABLE

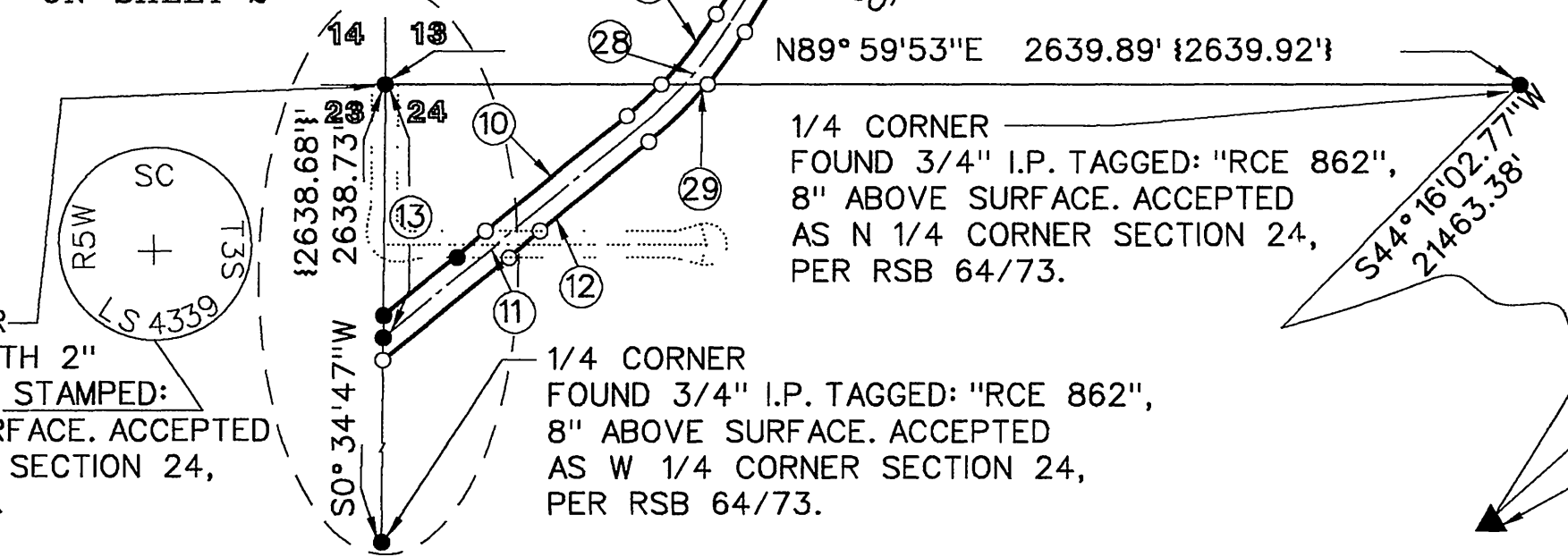
|    |              |                     |
|----|--------------|---------------------|
| 1  | S64° 45'06"W | 458.68'             |
| 2  | S64° 45'06"W | 444.18' (444.18')   |
| 3  | S64° 45'06"W | 429.68'             |
| 4  | S89° 48'03"W | 712.35'             |
| 5  | S89° 48'03"W | 712.35' (712.35')   |
| 6  | S40° 19'09"W | 512.79' (512.79')   |
| 7  | S40° 19'09"W | 512.79'             |
| 8  | S31° 34'54"W | 3484.03' (3484.03') |
| 9  | S31° 34'54"W | 3484.03'            |
| 10 | S50° 35'17"W | 741.95'             |
| 11 | S50° 35'17"W | 767.11' (766.76')   |
| 12 | S50° 35'17"W | 792.28'             |
| 13 | S0° 34'47"W  | 592.82' (593.12')   |
| 14 | S0° 32'31"W  | 1043.11' (1043.11') |

Centerline MWD Parcels per  
 Instr. No. 1974/164529 Dec. 31, 1974  
 No. 1975/16705 Feb. 11, 1975  
 No. 1975/26750 Mar. 7, 1975  
 No. 1975/108617 Sept. 5, 1975  
 No. 1978/149329 Jul. 19, 1978  
 No. 1978/149328 Jul. 19, 1978  
 No. 1977/220136 Nov. 4, 1977  
 No. 1977/218159 Nov. 2, 1977  
 No. 1977/220137 Nov. 4, 1977

### SURVEYOR'S NOTES

- The basis of bearings for this record of survey is California Coordinate System, NAD 83, Zone 6, as determined locally by a line between Stations "Cajalco North East Base" and "MFP1", being S51° 34'50"W, per Record of Survey Book 101, Pages 21 through 23, Riverside County Records.
- Distances shown hereon are ground distances. Grid distances may be obtained by multiplying ground distance by 0.99994857, Average elevation above mean sea level = 1248 feet, average longitude = 117° 21'58", average latitude = 33° 54'06", average convergence angle = 0° 36'48".
- "●" indicates found monument as noted.
- "▲" indicates found brass disk in concrete post, unless otherwise noted.
- "o" indicates set 1 1/2" iron pipe with tag stamped "MWD LS 6599" flush with surface, unless otherwise noted.
- ( ) indicates record data per Instr. 1974/164529, recorded December 31, 1974, Riverside County Records.
- { } indicates record data per Record of Survey Book 64, Page 73, Riverside County Records.
- The purpose of this Record of Survey is to delineate and monument MWD Parcels. Also to show the centerline alignment of the proposed Box Springs Feeder. (See Sheet 2)

DETAIL "B" ON SHEET 2



SECTION CORNER  
 FOUND 2" I.P. WITH 2"  
 BRONZE TABLET STAMPED:  
 FLUSH WITH SURFACE. ACCEPTED  
 AS NW CORNER SECTION 24,  
 PER RSB 64/73.

1/4 CORNER  
 FOUND 3/4" I.P. TAGGED: "RCE 862",  
 8" ABOVE SURFACE. ACCEPTED  
 AS N 1/4 CORNER SECTION 24,  
 PER RSB 64/73.

1/4 CORNER  
 FOUND 3/4" I.P. TAGGED: "RCE 862",  
 8" ABOVE SURFACE. ACCEPTED  
 AS W 1/4 CORNER SECTION 24,  
 PER RSB 64/73.

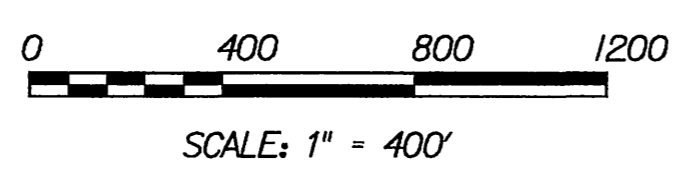
"CAJALCO NORTHEAST BASE"  
 FOUND 3 1/2" MWD BRASS DISK IN  
 12" x 12" CONCRETE BASE, 5" ABOVE SURFACE,  
 PER RSB 101/21-23.  
 ZONE 6, NAD 1983 (1991.35') COORDINATES.  
 N = 2258147.95'  
 E = 6210631.62'  
 CONVERGENCE ANGLE = 0° 36'48"

IN THE CITY AND UNINCORPORATED TERRITORY OF RIVERSIDE COUNTY, STATE OF CALIFORNIA

# RECORD OF SURVEY

OF PORTIONS OF SECTIONS 13 AND 24, T. 3 S., R. 5 W., SAN BERNARDINO MERIDIAN  
 THE METROPOLITAN WATER DISTRICT OF SOUTHERN CALIFORNIA  
 BOX SPRINGS FEEDER (PROPOSED ALIGNMENT)  
 JULY 2000 MANUEL M. CORTEZ LS 6599

- ① FOUND 1" I.P. WITH TAG  
STAMPED: "M.W.D. B.S.F.D.R. 220+77.81",  
18" BELOW SURFACE, PER MWDFB  
4040-01/088.
- ② FOUND 1" I.P. WITH TAG  
STAMPED: "C B.S.F. 252+25.36 P.I.",  
24" BELOW SURFACE PER MWDFB  
4040-01/072.
- ③ FOUND 1" I.P. WITH TAG  
STAMPED: "B.S.F. P.I.",  
9" BELOW SURFACE PER MWDFB  
4040-01/087.
- ④ FOUND 1" I.P. WITH TAG  
STAMPED: "C B.S.F. 276+70.67 P.I.",  
2" BELOW SURFACE PER MWDFB  
4040-01/086.
- ⑤ FOUND 1" I.P. WITH TAG  
STAMPED: "C B.S.F. 313+98.50 P.I.",  
FLUSH WITH SURFACE PER MWDFB  
4040-01/085.
- ⑥ FOUND 1" I.P. WITH TAG  
STAMPED: "C B.S.F. 327+11.24 P.I.",  
FLUSH WITH SURFACE PER MWDFB  
7585-22.



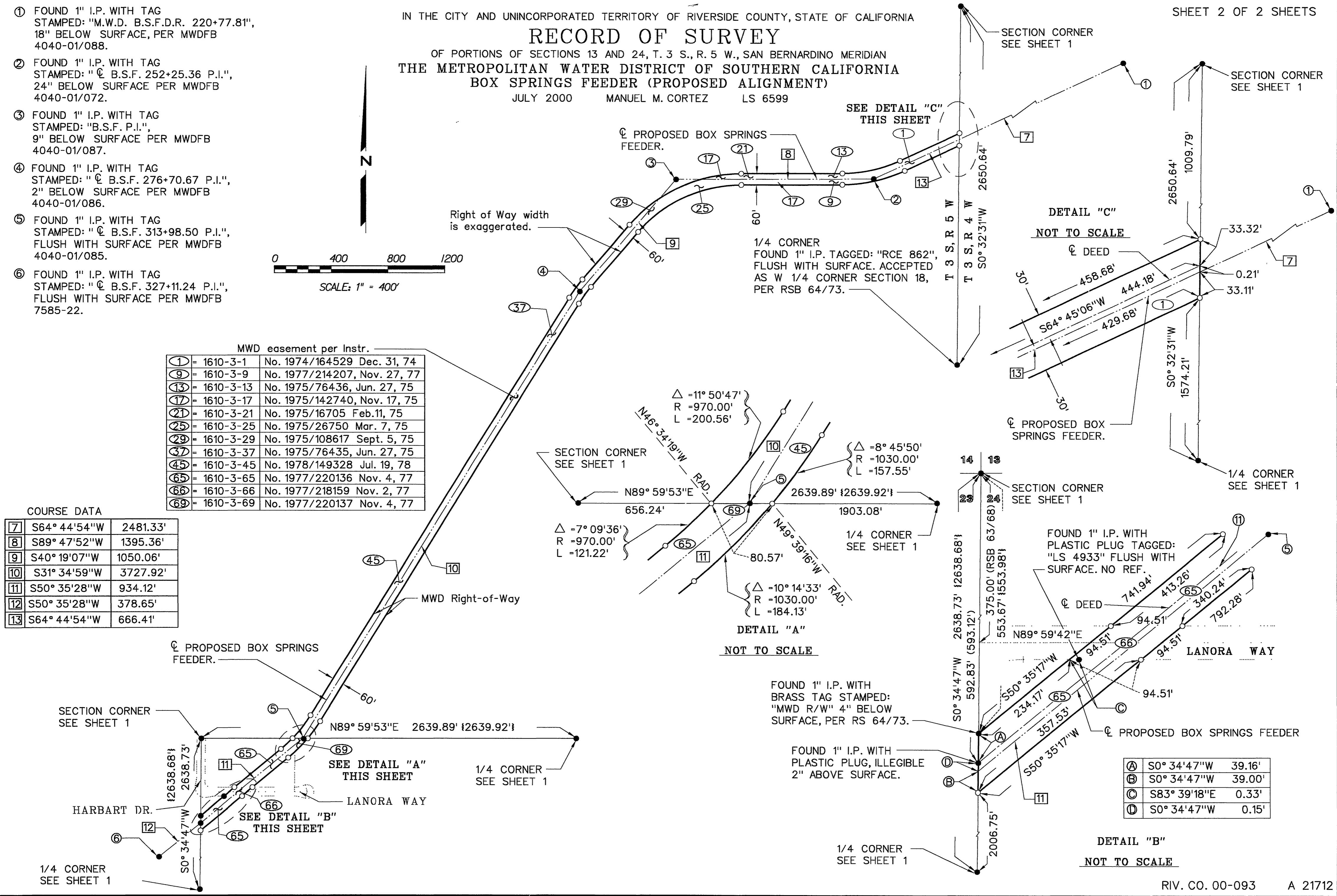
MWD easement per Instr.

|    |             |                  |             |
|----|-------------|------------------|-------------|
| ①  | = 1610-3-1  | No. 1974/164529  | Dec. 31, 74 |
| ⑨  | = 1610-3-9  | No. 1977/214207, | Nov. 27, 77 |
| ⑬  | = 1610-3-13 | No. 1975/76436,  | Jun. 27, 75 |
| ⑰  | = 1610-3-17 | No. 1975/142740, | Nov. 17, 75 |
| ⑳  | = 1610-3-21 | No. 1975/16705   | Feb. 11, 75 |
| ㉔  | = 1610-3-25 | No. 1975/26750   | Mar. 7, 75  |
| ㉘  | = 1610-3-29 | No. 1975/108617  | Sept. 5, 75 |
| ㉚  | = 1610-3-37 | No. 1975/76435,  | Jun. 27, 75 |
| ㉜  | = 1610-3-45 | No. 1978/149328  | Jul. 19, 78 |
| ⑥⑤ | = 1610-3-65 | No. 1977/220136  | Nov. 4, 77  |
| ⑥⑥ | = 1610-3-66 | No. 1977/218159  | Nov. 2, 77  |
| ⑥⑨ | = 1610-3-69 | No. 1977/220137  | Nov. 4, 77  |

COURSE DATA

|   |              |          |
|---|--------------|----------|
| ⑦ | S64° 44'54"W | 2481.33' |
| ⑧ | S89° 47'52"W | 1395.36' |
| ⑨ | S40° 19'07"W | 1050.06' |
| ⑩ | S31° 34'59"W | 3727.92' |
| ⑪ | S50° 35'28"W | 934.12'  |
| ⑫ | S50° 35'28"W | 378.65'  |
| ⑬ | S64° 44'54"W | 666.41'  |

Right of Way width is exaggerated.



SECTION CORNER  
SEE SHEET 1

SECTION CORNER  
SEE SHEET 1

SEE DETAIL "C"  
THIS SHEET

DETAIL "C"  
NOT TO SCALE

1/4 CORNER  
FOUND 1" I.P. TAGGED: "RCE 862",  
FLUSH WITH SURFACE. ACCEPTED  
AS W 1/4 CORNER SECTION 18,  
PER RSB 64/73.

PROPOSED BOX SPRINGS FEEDER.

1/4 CORNER  
SEE SHEET 1

SECTION CORNER  
SEE SHEET 1

SECTION CORNER  
SEE SHEET 1

FOUND 1" I.P. WITH  
PLASTIC PLUG TAGGED:  
"LS 4933" FLUSH WITH  
SURFACE. NO REF.

DETAIL "A"  
NOT TO SCALE

FOUND 1" I.P. WITH  
BRASS TAG STAMPED:  
"MWD R/W" 4" BELOW  
SURFACE, PER RS 64/73.

FOUND 1" I.P. WITH  
PLASTIC PLUG, ILLEGIBLE  
2" ABOVE SURFACE.

|   |              |        |
|---|--------------|--------|
| Ⓐ | S0° 34'47"W  | 39.16' |
| Ⓑ | S0° 34'47"W  | 39.00' |
| Ⓒ | S83° 39'18"E | 0.33'  |
| Ⓓ | S0° 34'47"W  | 0.15'  |

DETAIL "B"  
NOT TO SCALE

1/4 CORNER  
SEE SHEET 1

R/S 109/19

R/S 109/19