

IN THE CITY OF RIVERSIDE, COUNTY OF RIVERSIDE, AND IN THE UNINCORPORATED TERRITORY OF THE COUNTY OF RIVERSIDE, STATE OF CALIFORNIA

RECORD OF SURVEY

BEING A PORTION OF SECTIONS 13, 14, 15, 16, 17, 21, 22, 23, 24, 25, 26, 27, 28, 31, 33, 34, 35 AND 36 TOWNSHIP 3 SOUTH, RANGE 4 WEST, SAN BERNARDINO BASE AND MERIDIAN PSOMAS WALTER A. SHEEK PLS 4838

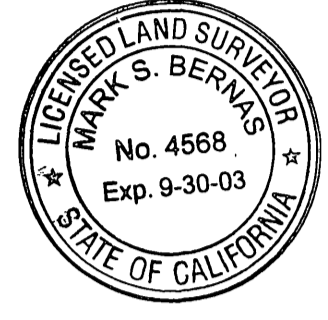
DATE OF SURVEY: SEPTEMBER-OCTOBER 2000

COUNTY SURVEYOR'S STATEMENT

THIS MAP HAS BEEN EXAMINED IN ACCORDANCE WITH SECTION 8766 OF THE LAND SURVEYORS' ACT THIS 14th DAY OF Feb, 2001

Mark S. Bernas
MARK S. BERNAS, COUNTY SURVEYOR

L.S. NO. 4568
EXPIRATION DATE 9-30-2003



PURPOSE OF THIS SURVEY
THE PURPOSE OF THIS SURVEY IS TO ESTABLISH THE BOUNDARY OF A PORTION OF MARCH AIR RESERVE BASE FOR THE DISPOSITION OF PROPERTY TO THE JOINT POWERS AUTHORITY FROM THE UNITED STATES AIR FORCE.

RECORDER'S STATEMENT

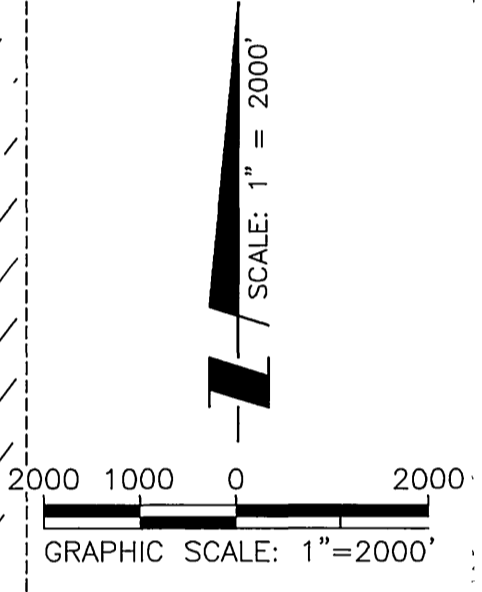
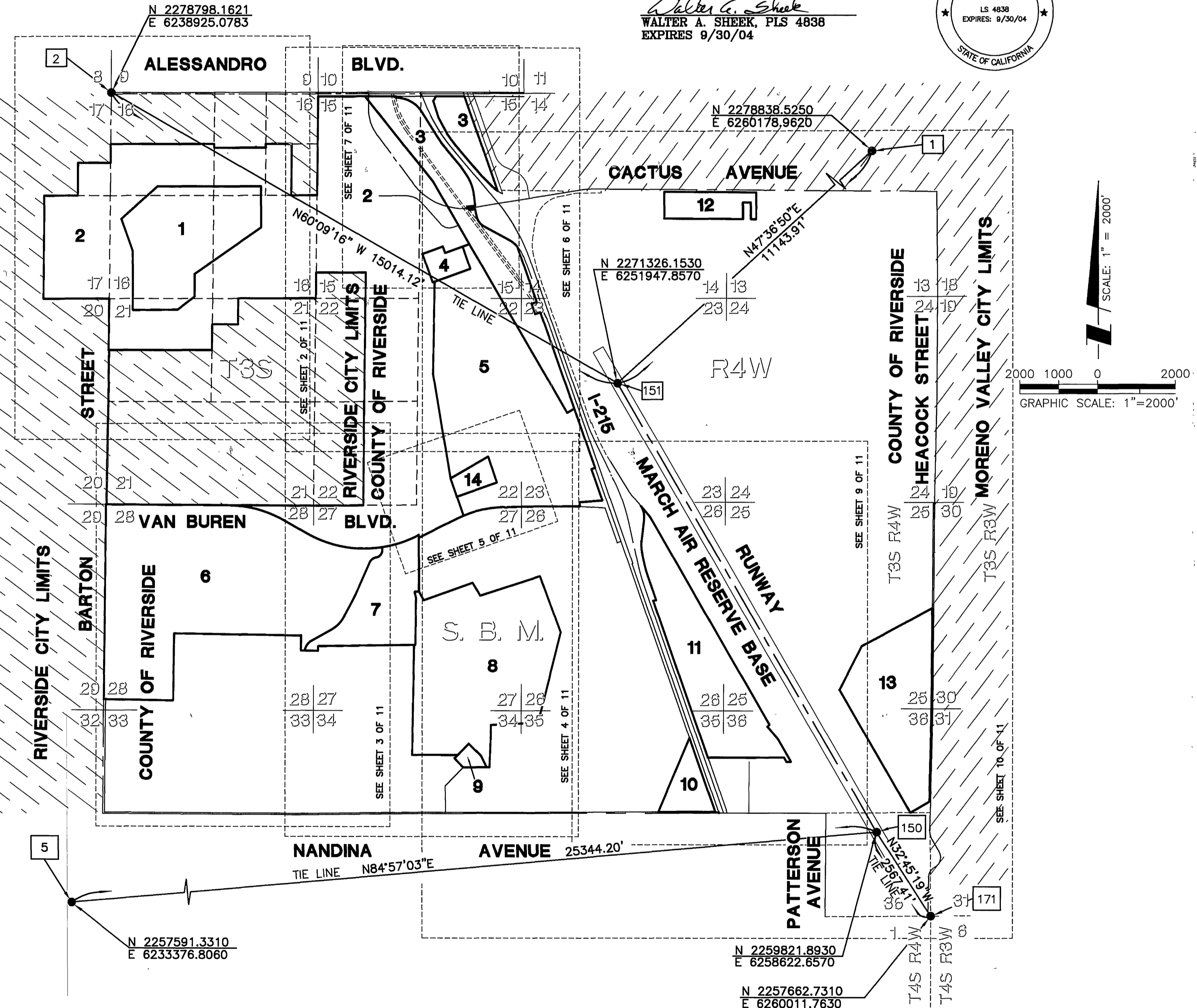
FILED THIS 15th DAY OF Feb, 2001, AT 8:00 AM.
IN BOOK 110 OF RECORDS OF SURVEY, AT PAGES 30-40, AT THE REQUEST OF THE COUNTY SURVEYOR.
FEE \$26.00 No: 2001-062514

GARY L. ORSO, COUNTY ASSESSOR - CLERK - RECORDER
BY: [Signature]

SURVEYOR'S STATEMENT

THIS MAP CORRECTLY REPRESENTS A SURVEY MADE BY ME OR UNDER MY DIRECTION IN CONFORMANCE WITH THE REQUIREMENTS OF THE LAND SURVEYORS' ACT, AT THE REQUEST OF THE JOINT POWERS AUTHORITY IN MAY, 2000.

Walter A. Sheek
WALTER A. SHEEK, PLS 4838
EXPIRES 9/30/04



DATUM STATEMENT

THE NORTH AMERICAN DATUM OF 1983 NAD83 (EPOCH 1992.9) WAS USED TO ESTABLISH THE HORIZONTAL VALUES FOR THIS MAP. THIS DATUM IS TAKEN FROM THE RIVERSIDE COUNTY FLOOD CONTROL DISTRICT'S (RCFCD) 1996 ADJUSTMENT.

CONTROL STATIONS:
RCFCD Z1430
RCFCD Z7953
RCFCD Z7956
RCFCD Z7986
RCFCD Z7971
RCFCD Z7981
RCFCD Z7984
ALL DISTANCES SHOWN HEREON ARE GRID DISTANCES. GROUND DISTANCES MAY BE OBTAINED BY MULTIPLYING GRID DISTANCES BY A COMBINATION FACTOR OF 1.00007058. ALL RECORD DISTANCES HAVE BEEN ADJUSTED TO GRID DISTANCES USING THE ABOVE COMBINATION FACTOR. DISTANCES SHOWN IN BRACKETS [562.35] HAVE BEEN ADJUSTED TO GROUND DISTANCES USING THE ABOVE COMBINATION FACTOR.

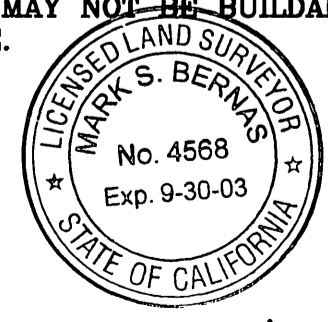
BASIS OF BEARINGS

THE BASIS OF BEARINGS SHOWN HEREON FOR THIS SURVEY IS THE CALIFORNIA STATE PLANE COORDINATE SYSTEM, C.C.S. 83, ZONE 6. BASED LOCALLY ON GPS CONTROL STATIONS LISTED ABOVE.

COUNTY SURVEYOR'S NOTE

THE COUNTY SURVEYOR HAS NOT ESTABLISHED AS OF THE DATE OF RECORDING OF THIS RECORD OF SURVEY THAT THE LAND SHOWN IN THE RECORD OF SURVEY IS IN COMPLIANCE WITH THE PROVISIONS OF THE SUBDIVISION MAP ACT, DIVISION 2 (COMMENCING WITH SECTION 66410) OF TITLE 7, OF THE GOVERNMENT CODE. THE PARCELS SHOWN ON THIS SURVEY MAY NOT HAVE BEEN LEGALLY CREATED AND THEREFORE MAY NOT BE BUILDABLE PARCELS FOR NON-GOVERNMENT OR NON-PUBLIC UTILITY USE.

Mark S. Bernas 2-14-01
MARK S. BERNAS, COUNTY SURVEYOR
L.S. NO. 4568
EXPIRATION DATE 9-30-2003



SEE SHEETS 2 THROUGH 10 FOR SURVEYOR'S NOTES.

COPY

R/S 110/31

IN THE CITY OF RIVERSIDE, COUNTY OF RIVERSIDE, AND IN THE UNINCORPORATED TERRITORY OF THE COUNTY OF RIVERSIDE, STATE OF CALIFORNIA

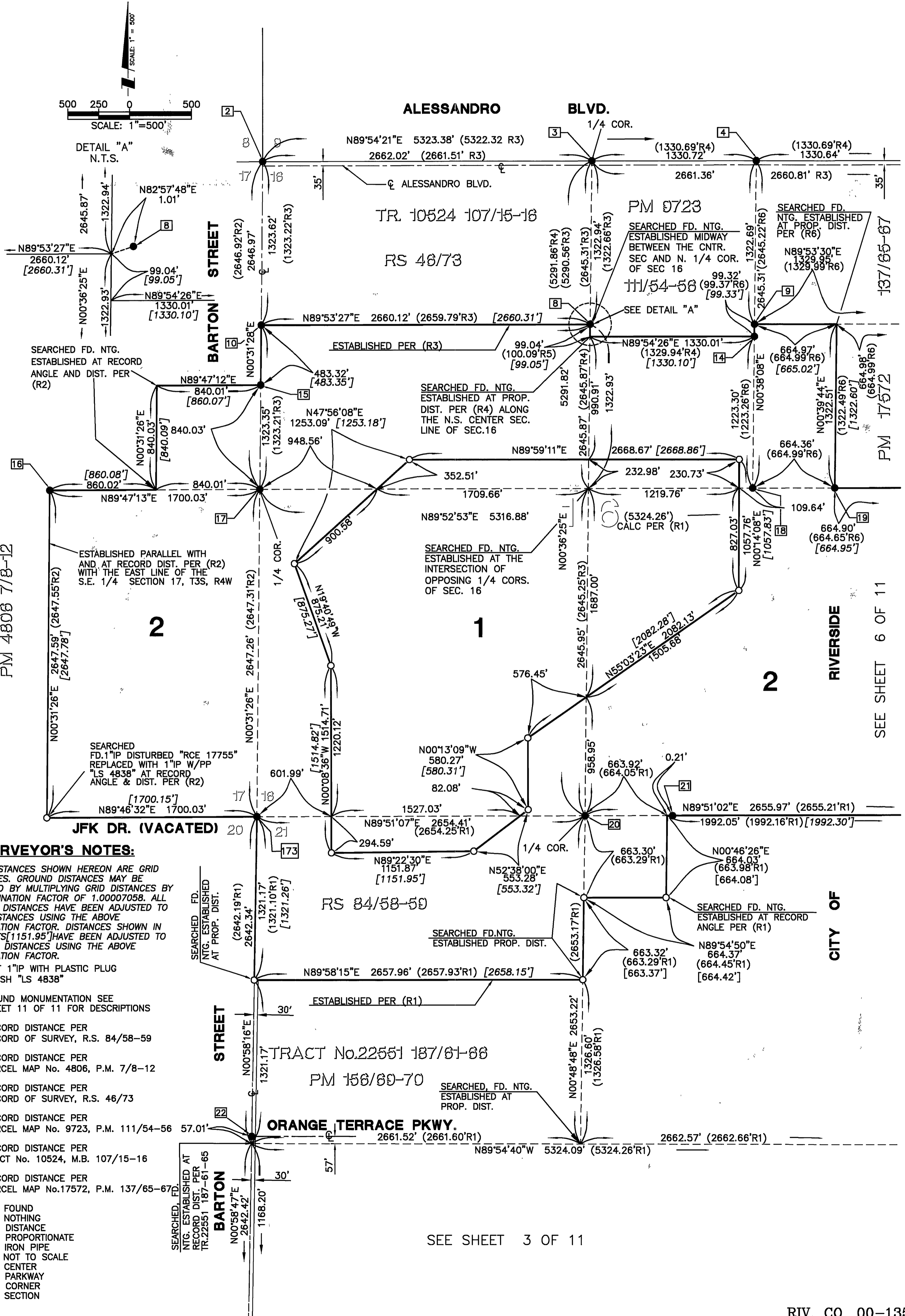
SHEET 2 OF 11 SHEETS

RECORD OF SURVEY

BEING A PORTION OF SECTIONS 13, 14, 15, 16, 17, 21, 22, 23, 24, 25, 26, 27, 28, 31, 33, 34, 35 AND 36 TOWNSHIP 3 SOUTH, RANGE 4 WEST, SAN BERNARDINO BASE AND MERIDIAN

PSOMAS WALTER A. SHEEK PLS 4838

DATE OF SURVEY: SEPTEMBER-OCTOBER 2000



SURVEYOR'S NOTES:

ALL DISTANCES SHOWN HEREON ARE GRID DISTANCES. GROUND DISTANCES MAY BE OBTAINED BY MULTIPLYING GRID DISTANCES BY A COMBINATION FACTOR OF 1.00007058. ALL RECORD DISTANCES HAVE BEEN ADJUSTED TO GRID DISTANCES USING THE ABOVE COMBINATION FACTOR. DISTANCES SHOWN IN BRACKETS [1151.95'] HAVE BEEN ADJUSTED TO GROUND DISTANCES USING THE ABOVE COMBINATION FACTOR.

- = SET 1" IP WITH PLASTIC PLUG FLUSH "LS 4838"
- = FOUND MONUMENTATION SEE SHEET 11 OF 11 FOR DESCRIPTIONS
- R1 = RECORD DISTANCE PER RECORD OF SURVEY, R.S. 84/58-59
- R2 = RECORD DISTANCE PER PARCEL MAP No. 4806, P.M. 7/8-12
- R3 = RECORD DISTANCE PER RECORD OF SURVEY, R.S. 46/73
- R4 = RECORD DISTANCE PER PARCEL MAP No. 9723, P.M. 111/54-56 57.01'
- R5 = RECORD DISTANCE PER TRACT No. 10524, M.B. 107/15-16
- R6 = RECORD DISTANCE PER PARCEL MAP No. 17572, P.M. 137/65-67
- FD. = FOUND
- NTG. = NOTHING
- DIST. = DISTANCE
- PROP. = PROPORTIONATE
- IP = IRON PIPE
- N.T.S. = NOT TO SCALE
- CNTR. = CENTER
- PKWY. = PARKWAY
- COR. = CORNER
- SEC. = SECTION

SEE SHEET 3 OF 11

SEE SHEET 6 OF 11

R/S 110/31

11/10/32
COPY

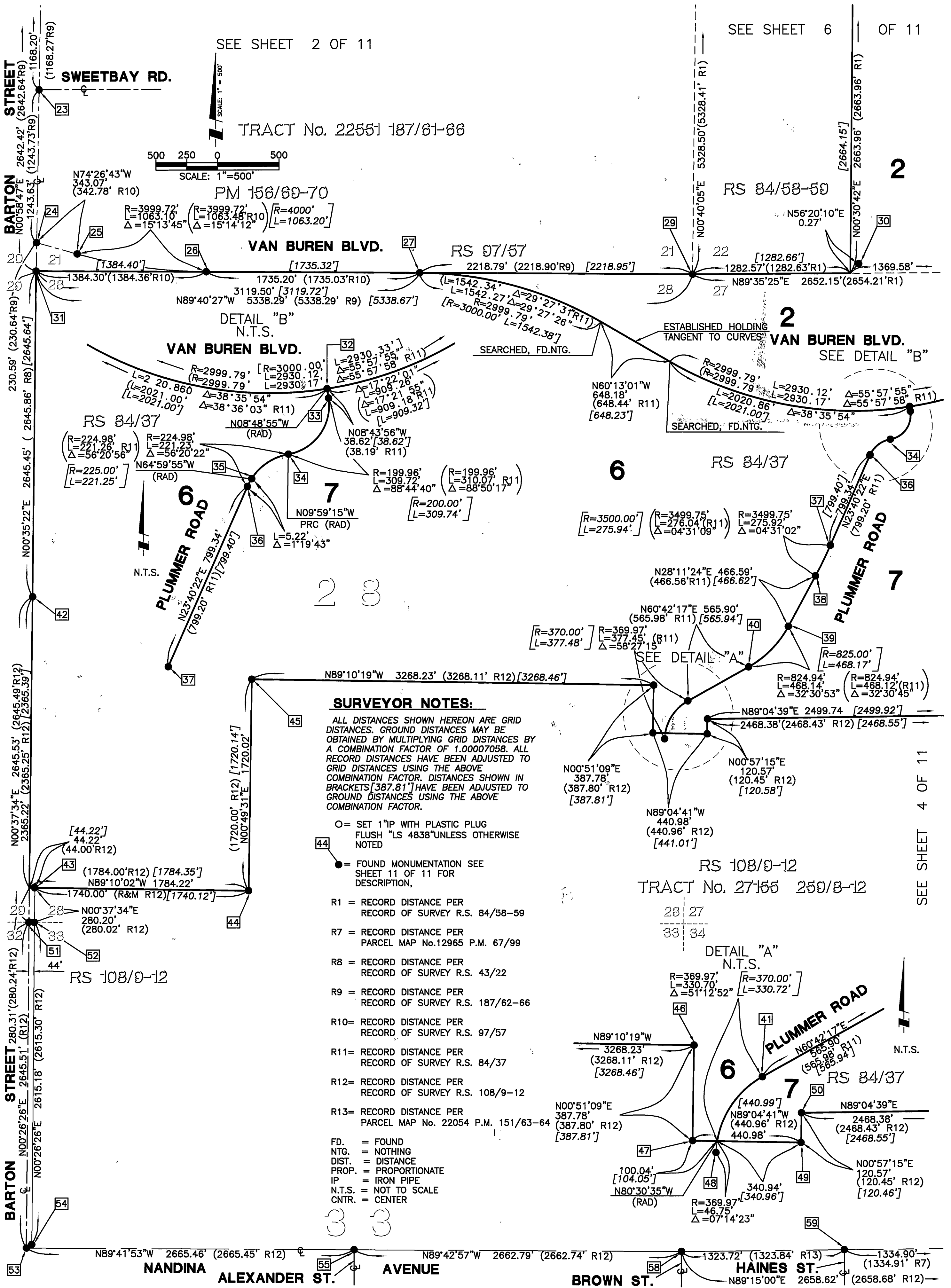
R/S 110/32

RECORD OF SURVEY

BEING A PORTION OF SECTIONS 13, 14, 15, 16, 17, 21, 22, 23, 24, 25, 26, 27, 28, 31, 33, 34, 35 AND 36 TOWNSHIP 3 SOUTH, RANGE 4 WEST, SAN BERNARDINO BASE AND MERIDIAN

PSOMAS WALTER A. SHEEK PLS 4838

DATE OF SURVEY: SEPTEMBER-OCTOBER 2000



R/S 110/32

copy 10/13

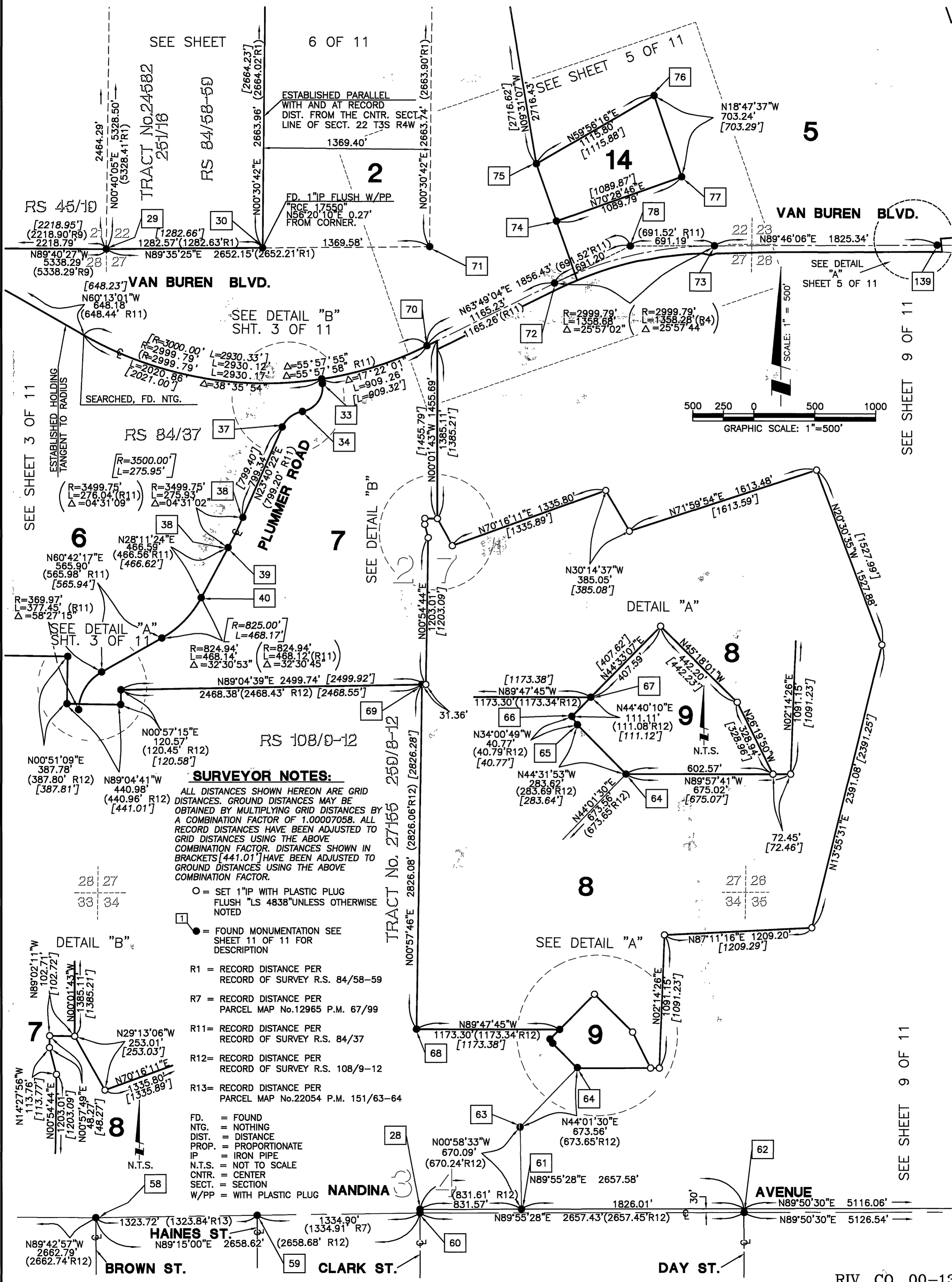
IN THE CITY OF RIVERSIDE, COUNTY OF RIVERSIDE, AND IN THE UNINCORPORATED TERRITORY OF THE COUNTY OF RIVERSIDE, STATE OF CALIFORNIA

RECORD OF SURVEY

BEING A PORTION OF SECTIONS 13, 14, 15, 16, 17, 21, 22, 23, 24, 25, 26, 27, 28, 31, 33, 34, 35 AND 36 TOWNSHIP 3 SOUTH, RANGE 4 WEST, SAN BERNARDINO BASE AND MERIDIAN

PSOMAS WALTER A. SHEEK PLS 4838

DATE OF SURVEY: SEPTEMBER-OCTOBER 2000



SEE DETAIL "B" SHT. 3 OF 11

SEE DETAIL "A" SHEET 5 OF 11

SEE SHEET 3 OF 11

SEE SHEET 9 OF 11

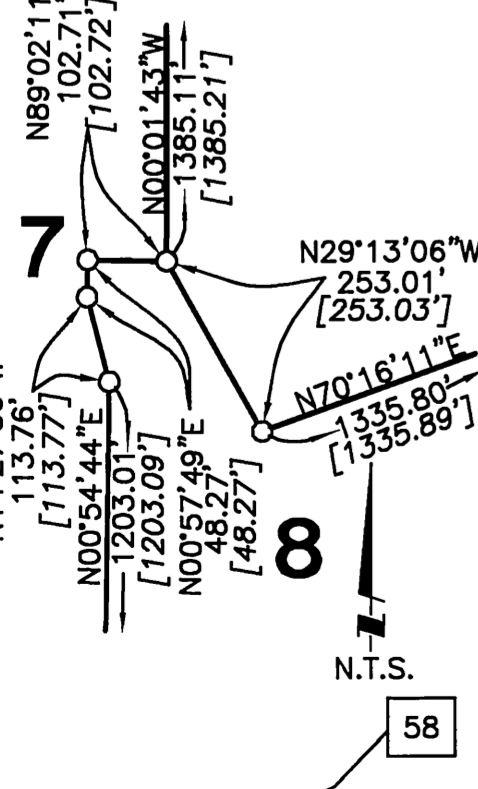
SURVEYOR NOTES:

ALL DISTANCES SHOWN HEREON ARE GRID DISTANCES. GROUND DISTANCES MAY BE OBTAINED BY MULTIPLYING GRID DISTANCES BY A COMBINATION FACTOR OF 1.00007058. ALL RECORD DISTANCES HAVE BEEN ADJUSTED TO GRID DISTANCES USING THE ABOVE COMBINATION FACTOR. DISTANCES SHOWN IN BRACKETS [441.01'] HAVE BEEN ADJUSTED TO GROUND DISTANCES USING THE ABOVE COMBINATION FACTOR.

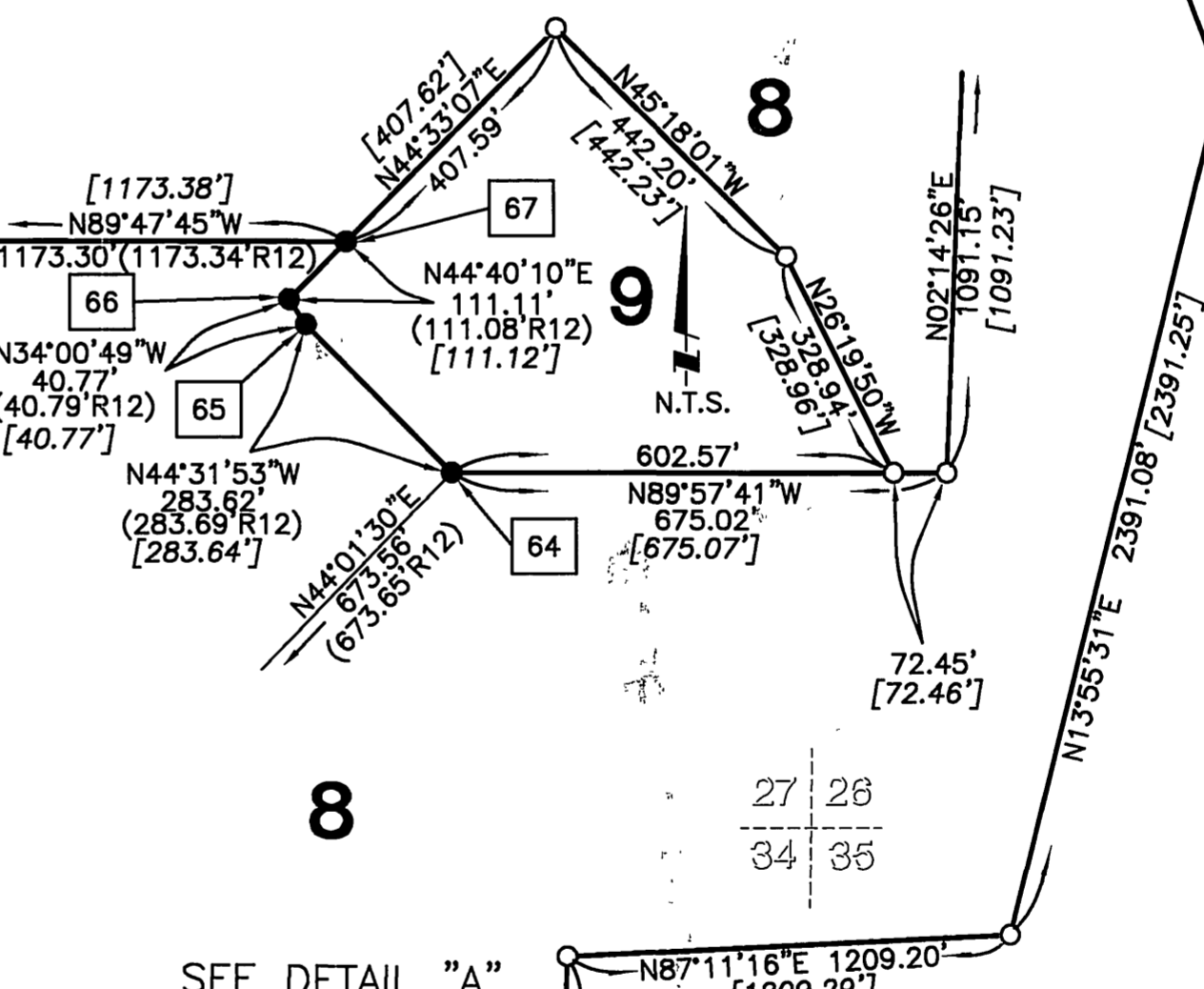
- = SET 1"IP WITH PLASTIC PLUG FLUSH "LS 4838" UNLESS OTHERWISE NOTED
- = FOUND MONUMENTATION SEE SHEET 11 OF 11 FOR DESCRIPTION
- R1 = RECORD DISTANCE PER RECORD OF SURVEY R.S. 84/58-59
- R7 = RECORD DISTANCE PER PARCEL MAP No.12965 P.M. 67/99
- R11 = RECORD DISTANCE PER RECORD OF SURVEY R.S. 84/37
- R12 = RECORD DISTANCE PER RECORD OF SURVEY R.S. 108/9-12
- R13 = RECORD DISTANCE PER PARCEL MAP No.22054 P.M. 151/63-64

- FD. = FOUND
- NTG. = NOTHING
- DIST. = DISTANCE
- PROP. = PROPORTIONATE
- IP = IRON PIPE
- N.T.S. = NOT TO SCALE
- CNTR. = CENTER
- SECT. = SECTION
- W/PP = WITH PLASTIC PLUG

DETAIL "B"



DETAIL "A"



IN THE CITY OF RIVERSIDE, COUNTY OF RIVERSIDE, AND IN THE UNINCORPORATED TERRITORY OF THE COUNTY OF RIVERSIDE, STATE OF CALIFORNIA

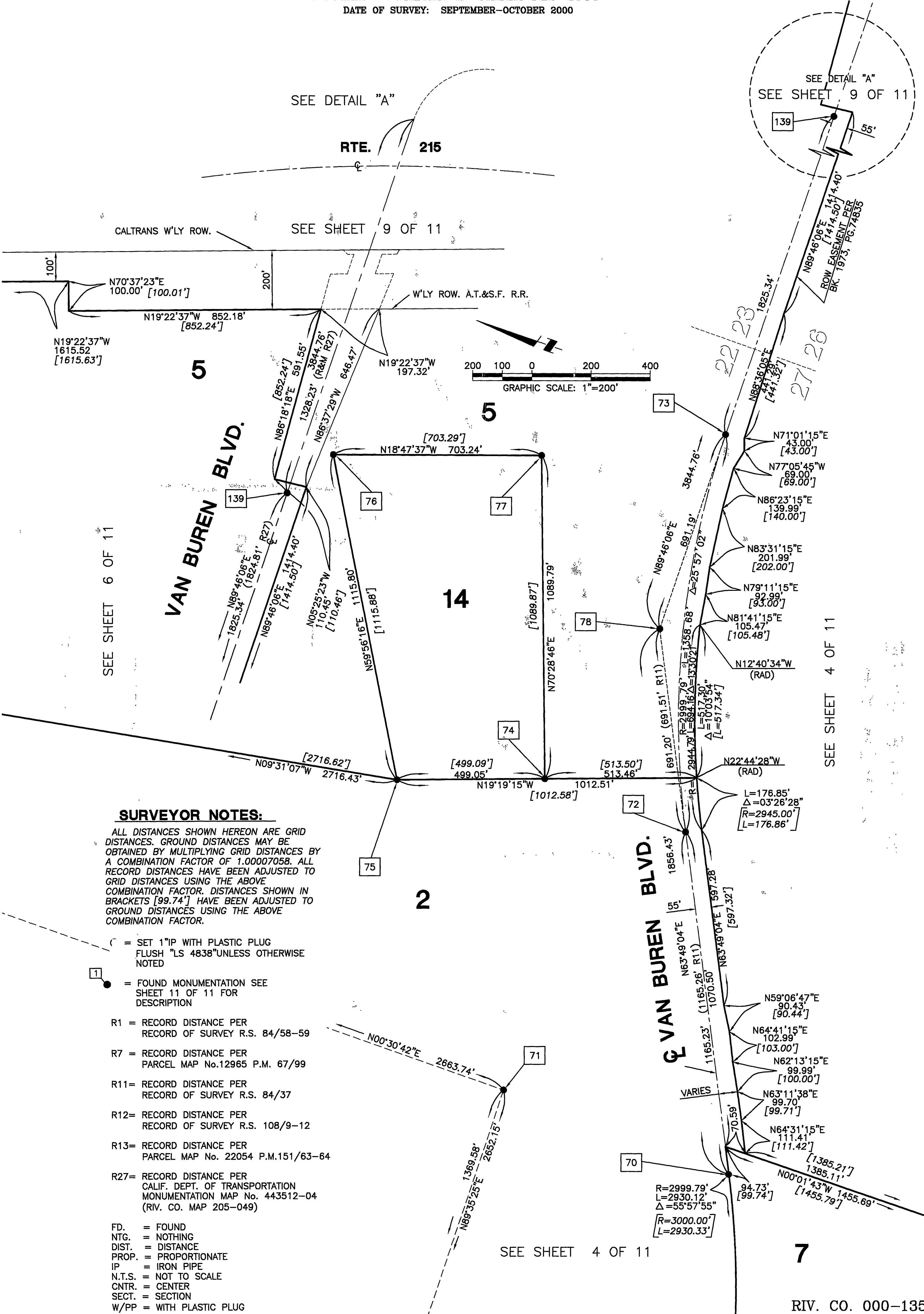
RECORD OF SURVEY

BEING A PORTION OF SECTIONS 13, 14, 15, 16, 17, 21, 22, 23, 24, 25, 26, 27, 28, 31, 33, 34, 35 AND 36 TOWNSHIP 3 SOUTH, RANGE 4 WEST, SAN BERNARDINO BASE AND MERIDIAN

PSOMAS WALTER A. SHEEK PLS 4838

DATE OF SURVEY: SEPTEMBER-OCTOBER 2000

copy



SURVEYOR NOTES:

ALL DISTANCES SHOWN HEREON ARE GRID DISTANCES. GROUND DISTANCES MAY BE OBTAINED BY MULTIPLYING GRID DISTANCES BY A COMBINATION FACTOR OF 1.00007058. ALL RECORD DISTANCES HAVE BEEN ADJUSTED TO GRID DISTANCES USING THE ABOVE COMBINATION FACTOR. DISTANCES SHOWN IN BRACKETS [99.74'] HAVE BEEN ADJUSTED TO GROUND DISTANCES USING THE ABOVE COMBINATION FACTOR.

- ⊕ = SET 1"IP WITH PLASTIC PLUG FLUSH "LS 4838" UNLESS OTHERWISE NOTED
- ① = FOUND MONUMENTATION SEE SHEET 11 OF 11 FOR DESCRIPTION
- R1 = RECORD DISTANCE PER RECORD OF SURVEY R.S. 84/58-59
- R7 = RECORD DISTANCE PER PARCEL MAP No. 12965 P.M. 67/99
- R11 = RECORD DISTANCE PER RECORD OF SURVEY R.S. 84/37
- R12 = RECORD DISTANCE PER RECORD OF SURVEY R.S. 108/9-12
- R13 = RECORD DISTANCE PER PARCEL MAP No. 22054 P.M. 151/63-64
- R27 = RECORD DISTANCE PER CALIF. DEPT. OF TRANSPORTATION MONUMENTATION MAP No. 443512-04 (RIV. CO. MAP 205-049)
- FD. = FOUND
- NTG. = NOTHING
- DIST. = DISTANCE
- PROP. = PROPORTIONATE
- IP = IRON PIPE
- N.T.S. = NOT TO SCALE
- CNTR. = CENTER
- SECT. = SECTION
- W/PP = WITH PLASTIC PLUG

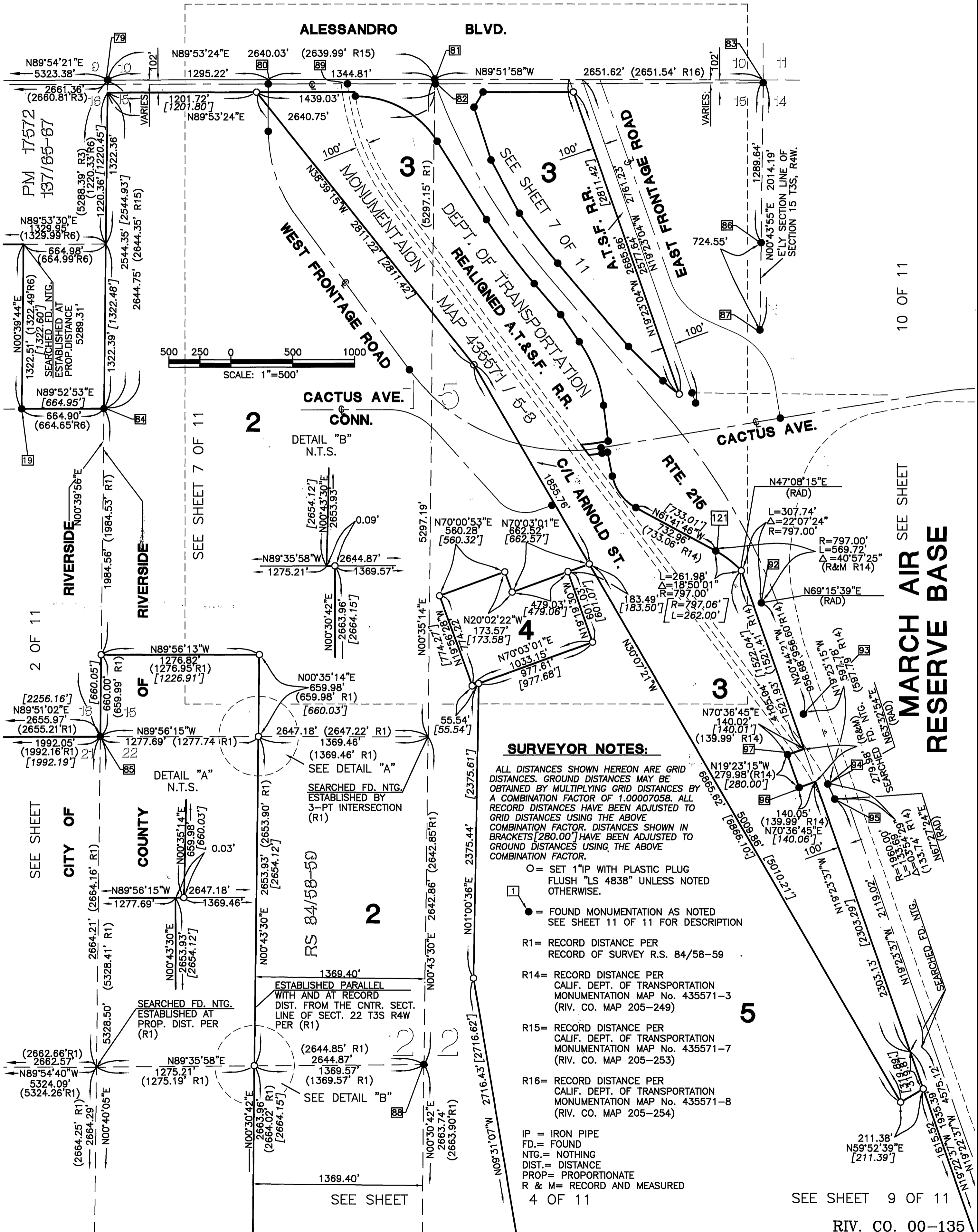
COPY

IN THE CITY OF RIVERSIDE, COUNTY OF RIVERSIDE, AND IN THE UNINCORPORATED TERRITORY OF THE COUNTY OF RIVERSIDE, STATE OF CALIFORNIA

SHEET 6 OF 11 SHEETS

RECORD OF SURVEY

BEING A PORTION OF SECTIONS 13, 14, 15, 16, 17, 21, 22, 23, 24, 25, 26, 27, 28, 31, 33, 34, 35 AND 36 TOWNSHIP 3 SOUTH, RANGE 4 WEST, SAN BERNARDINO BASE AND MERIDIAN
PSOMAS WALTER A. SHEEK PLS 4838
DATE OF SURVEY: SEPTEMBER-OCTOBER 2000



SURVEYOR NOTES:

ALL DISTANCES SHOWN HEREON ARE GRID DISTANCES. GROUND DISTANCES MAY BE OBTAINED BY MULTIPLYING GRID DISTANCES BY A COMBINATION FACTOR OF 1.00007058. ALL RECORD DISTANCES HAVE BEEN ADJUSTED TO GRID DISTANCES USING THE ABOVE COMBINATION FACTOR. DISTANCES SHOWN IN BRACKETS [280.00'] HAVE BEEN ADJUSTED TO GROUND DISTANCES USING THE ABOVE COMBINATION FACTOR.

- = SET 1" IP WITH PLASTIC PLUG FLUSH "LS 4838" UNLESS NOTED OTHERWISE.
- = FOUND MONUMENTATION AS NOTED SEE SHEET 11 OF 11 FOR DESCRIPTION
- R1 = RECORD DISTANCE PER RECORD OF SURVEY R.S. 84/58-59
- R14 = RECORD DISTANCE PER CALIF. DEPT. OF TRANSPORTATION MONUMENTATION MAP No. 435571-3 (RIV. CO. MAP 205-249)
- R15 = RECORD DISTANCE PER CALIF. DEPT. OF TRANSPORTATION MONUMENTATION MAP No. 435571-7 (RIV. CO. MAP 205-253)
- R16 = RECORD DISTANCE PER CALIF. DEPT. OF TRANSPORTATION MONUMENTATION MAP No. 435571-8 (RIV. CO. MAP 205-254)
- IP = IRON PIPE
- FD = FOUND
- NTG. = NOTHING
- DIST. = DISTANCE
- PROP. = PROPORTIONATE
- R & M = RECORD AND MEASURED

10 OF 11

SEE SHEET
**MARCH AIR
RESERVE BASE**

SEE SHEET 9 OF 11

RIV. CO. 00-135

copy

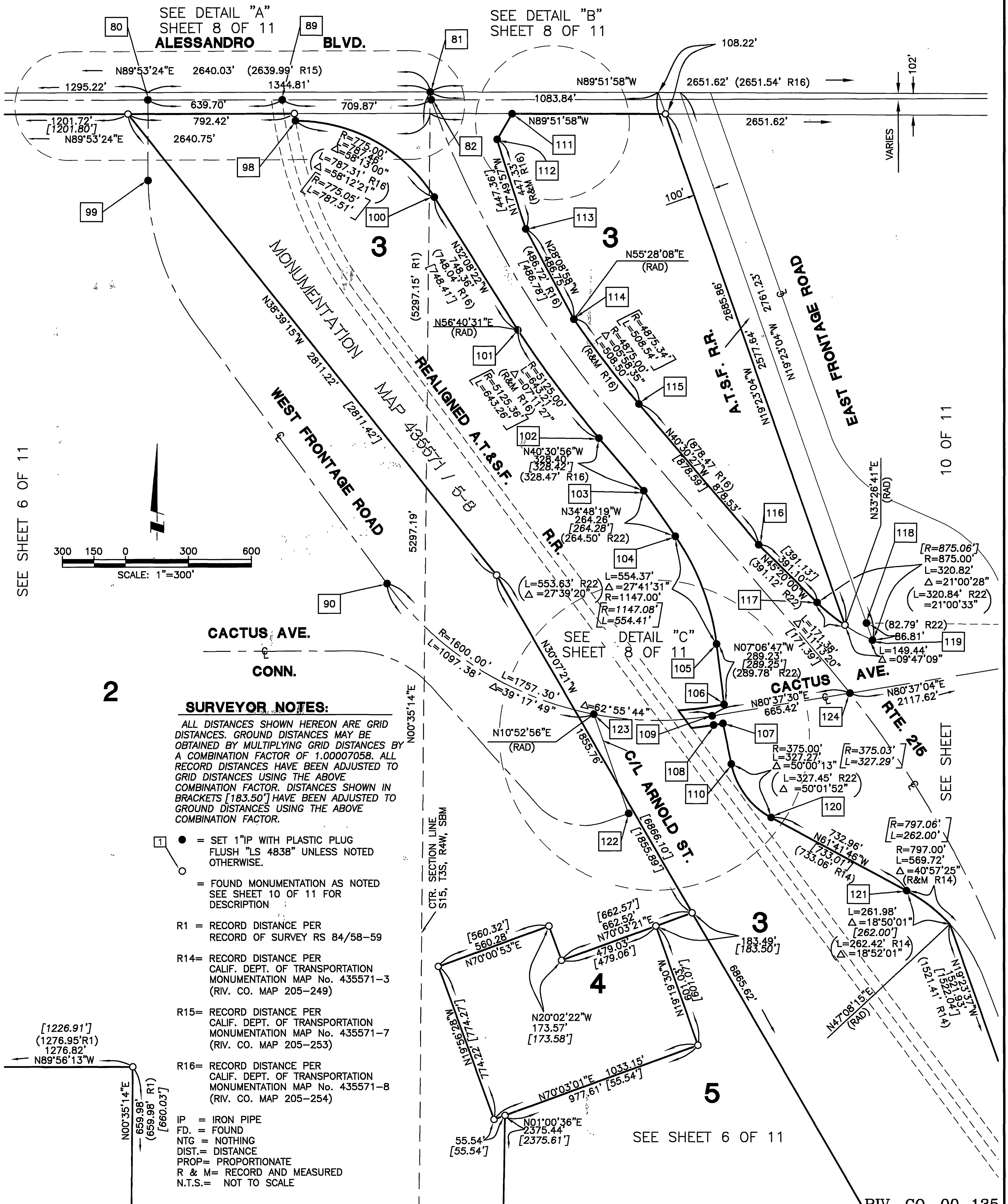
IN THE CITY OF RIVERSIDE, COUNTY OF RIVERSIDE, AND IN THE UNINCORPORATED TERRITORY OF THE COUNTY OF RIVERSIDE, STATE OF CALIFORNIA

RECORD OF SURVEY

BEING A PORTION OF SECTIONS 13, 14, 15, 16, 17, 21, 22, 23, 24, 25, 26, 27, 28, 31, 33, 34, 35 AND 36 TOWNSHIP 3 SOUTH, RANGE 4 WEST, SAN BERNARDINO BASE AND MERIDIAN

PSOMAS WALTER A. SHEEK PLS 4838

DATE OF SURVEY: SEPTEMBER-OCTOBER 2000



SEE SHEET 6 OF 11

10 OF 11

SEE SHEET

SEE SHEET 6 OF 11

RIV. CO. 00-135

SURVEYOR NOTES:

ALL DISTANCES SHOWN HEREON ARE GRID DISTANCES. GROUND DISTANCES MAY BE OBTAINED BY MULTIPLYING GRID DISTANCES BY A COMBINATION FACTOR OF 1.00007058. ALL RECORD DISTANCES HAVE BEEN ADJUSTED TO GRID DISTANCES USING THE ABOVE COMBINATION FACTOR. DISTANCES SHOWN IN BRACKETS [183.50'] HAVE BEEN ADJUSTED TO GROUND DISTANCES USING THE ABOVE COMBINATION FACTOR.

- = SET 1" IP WITH PLASTIC PLUG FLUSH "LS 4838" UNLESS NOTED OTHERWISE.
- = FOUND MONUMENTATION AS NOTED SEE SHEET 10 OF 11 FOR DESCRIPTION
- R1 = RECORD DISTANCE PER RECORD OF SURVEY RS 84/58-59
- R14 = RECORD DISTANCE PER CALIF. DEPT. OF TRANSPORTATION MONUMENTATION MAP No. 435571-3 (RIV. CO. MAP 205-249)
- R15 = RECORD DISTANCE PER CALIF. DEPT. OF TRANSPORTATION MONUMENTATION MAP No. 435571-7 (RIV. CO. MAP 205-253)
- R16 = RECORD DISTANCE PER CALIF. DEPT. OF TRANSPORTATION MONUMENTATION MAP No. 435571-8 (RIV. CO. MAP 205-254)
- IP = IRON PIPE
- FD = FOUND
- NTG = NOTHING
- DIST. = DISTANCE
- PROP = PROPORTIONATE
- R & M = RECORD AND MEASURED
- N.T.S. = NOT TO SCALE

11/9/37
COPY

R/S 110/37

IN THE CITY OF RIVERSIDE, COUNTY OF RIVERSIDE, AND IN THE UNINCORPORATED TERRITORY OF THE COUNTY OF RIVERSIDE, STATE OF CALIFORNIA

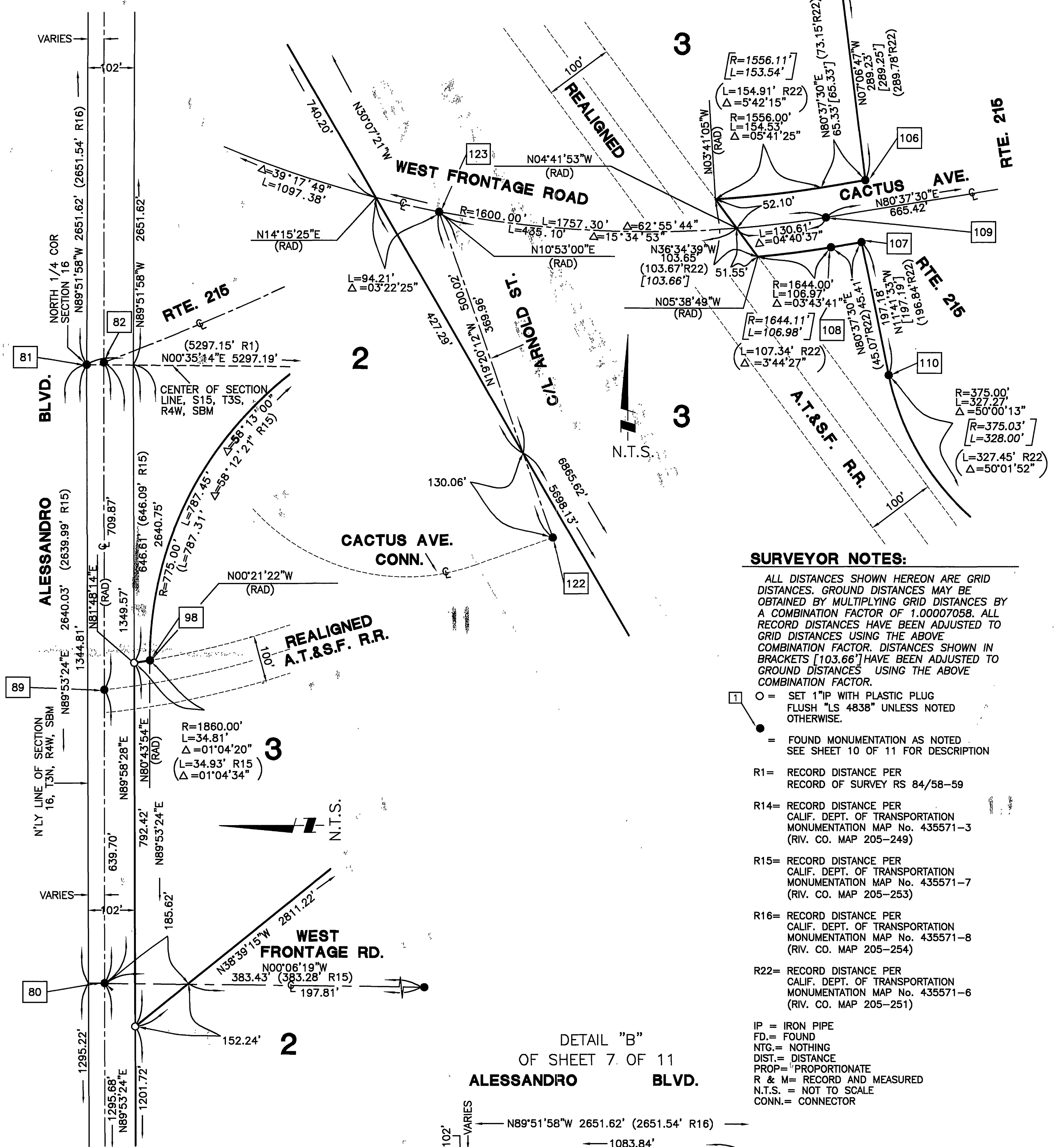
SHEET 8 OF 11 SHEETS

RECORD OF SURVEY

BEING A PORTION OF SECTIONS 13, 14, 15, 16, 17, 21, 22, 23, 24, 25, 26, 27, 28, 31, 33, 34, 35 AND 36 TOWNSHIP 3 SOUTH, RANGE 4 WEST, SAN BERNARDINO BASE AND MERIDIAN
PSOMAS WALTER A. SHEEK PLS 4838
DATE OF SURVEY: SEPTEMBER-OCTOBER 2000

DETAIL "A"
OF SHEET 7 OF 11

DETAIL "C"
OF SHEET 7 OF 11



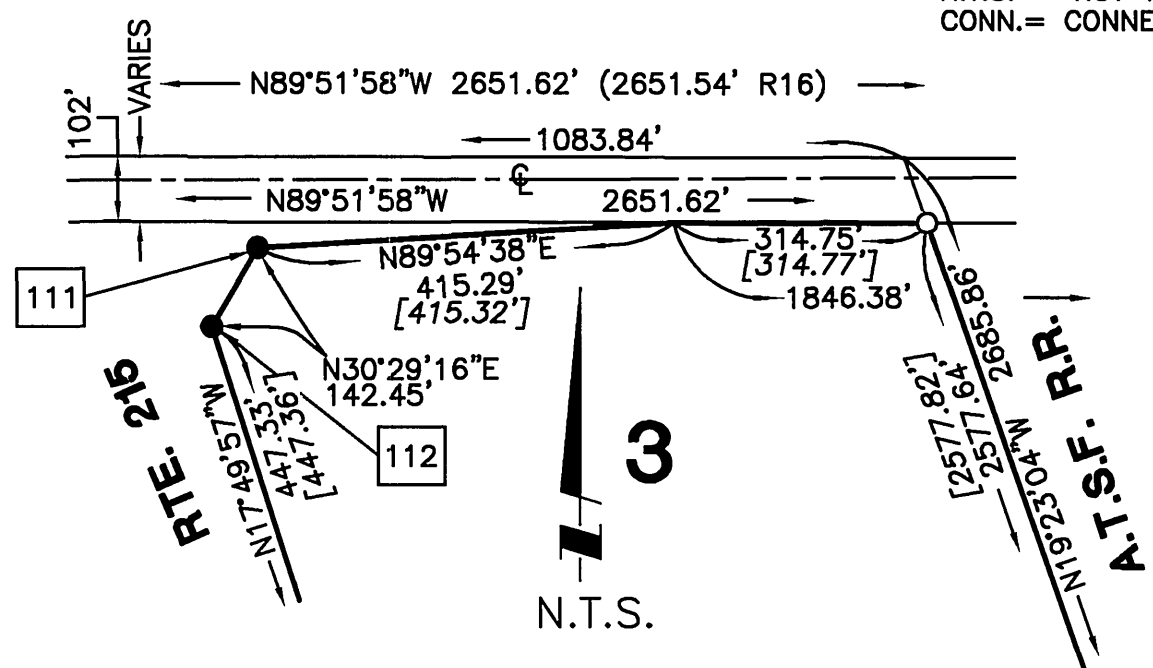
SURVEYOR NOTES:

ALL DISTANCES SHOWN HEREON ARE GRID DISTANCES. GROUND DISTANCES MAY BE OBTAINED BY MULTIPLYING GRID DISTANCES BY A COMBINATION FACTOR OF 1.00007058. ALL RECORD DISTANCES HAVE BEEN ADJUSTED TO GRID DISTANCES USING THE ABOVE COMBINATION FACTOR. DISTANCES SHOWN IN BRACKETS [103.66'] HAVE BEEN ADJUSTED TO GROUND DISTANCES USING THE ABOVE COMBINATION FACTOR.

- = SET 1"IP WITH PLASTIC PLUG FLUSH "LS 4838" UNLESS NOTED OTHERWISE.
- = FOUND MONUMENTATION AS NOTED SEE SHEET 10 OF 11 FOR DESCRIPTION
- R1= RECORD DISTANCE PER RECORD OF SURVEY RS 84/58-59
- R14= RECORD DISTANCE PER CALIF. DEPT. OF TRANSPORTATION MONUMENTATION MAP No. 435571-3 (RIV. CO. MAP 205-249)
- R15= RECORD DISTANCE PER CALIF. DEPT. OF TRANSPORTATION MONUMENTATION MAP No. 435571-7 (RIV. CO. MAP 205-253)
- R16= RECORD DISTANCE PER CALIF. DEPT. OF TRANSPORTATION MONUMENTATION MAP No. 435571-8 (RIV. CO. MAP 205-254)
- R22= RECORD DISTANCE PER CALIF. DEPT. OF TRANSPORTATION MONUMENTATION MAP No. 435571-6 (RIV. CO. MAP 205-251)

IP = IRON PIPE
FD.= FOUND
NTG.= NOTHING
DIST.= DISTANCE
PROP.= PROPORTIONATE
R & M= RECORD AND MEASURED
N.T.S. = NOT TO SCALE
CONN.= CONNECTOR

DETAIL "B"
OF SHEET 7 OF 11



R/S 110/37

IN THE CITY OF RIVERSIDE, COUNTY OF RIVERSIDE, AND IN THE UNINCORPORATED TERRITORY OF THE COUNTY OF RIVERSIDE, STATE OF CALIFORNIA

RECORD OF SURVEY

BEING A PORTION OF SECTIONS 13, 14, 15, 18, 17, 21, 22, 23, 24, 25, 26, 27, 28, 31, 33, 34, 35 AND 36 TOWNSHIP 3 SOUTH, RANGE 4 WEST, SAN BERNARDINO BASE AND MERIDIAN

PSOMAS WALTER A. SHEEK PLS 4838

DATE OF SURVEY: SEPTEMBER-OCTOBER 2000

SEE SHEET 10 OF 11

SURVEYOR'S NOTES:

ALL DISTANCES SHOWN HEREON ARE GRID DISTANCES. GROUND DISTANCES MAY BE OBTAINED BY MULTIPLYING GRID DISTANCES BY A COMBINATION FACTOR OF 1.00007058. ALL RECORD DISTANCES HAVE BEEN ADJUSTED TO GRID DISTANCES USING THE ABOVE COMBINATION FACTOR. DISTANCES SHOWN IN BRACKETS [564.73'] HAVE BEEN ADJUSTED TO GROUND DISTANCES USING THE ABOVE COMBINATION FACTOR.

- = SET 1" IP WITH PLASTIC PLUG FLUSH "LS 4838" UNLESS NOTED OTHERWISE.
- = FOUND MONUMENTATION AS NOTED SEE SHEET 11 OF 11 FOR DESCRIPTION

R17= RECORD DISTANCE PER CALIF. DEPT. OF TRANSPORTATION MONUMENTATION MAP No. 453860-13 (RIV. CO. MAP 205-234)

R18= RECORD DISTANCE PER CALIF. DEPT. OF TRANSPORTATION MONUMENTATION MAP No. 453860-14 (RIV. CO. MAP 205-235)

R19= RECORD DISTANCE PER CALIF. DEPT. OF TRANSPORTATION MONUMENTATION MAP No. 453860-15 (RIV. CO. MAP 205-236)

R20= RECORD DISTANCE PER RECORD OF SURVEY R.S. 75/66

R21= RECORD DISTANCE PER PARCEL MAP 14264 P.M. 82/66-67

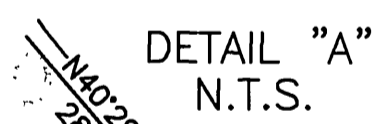
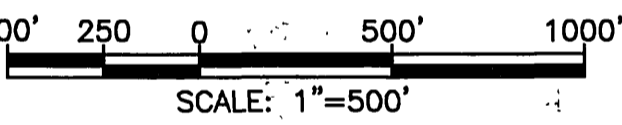
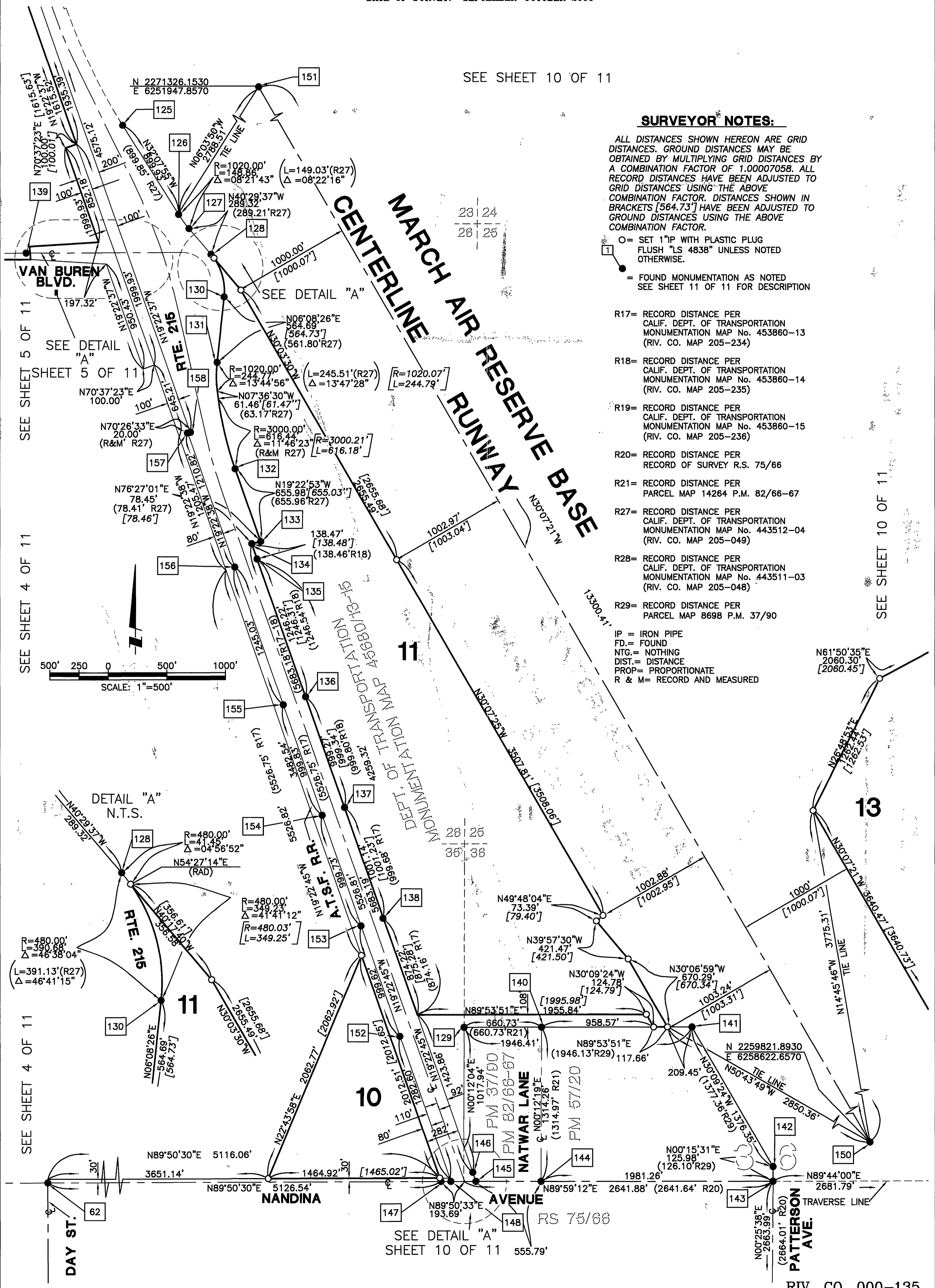
R27= RECORD DISTANCE PER CALIF. DEPT. OF TRANSPORTATION MONUMENTATION MAP No. 443512-04 (RIV. CO. MAP 205-049)

R28= RECORD DISTANCE PER CALIF. DEPT. OF TRANSPORTATION MONUMENTATION MAP No. 443511-03 (RIV. CO. MAP 205-048)

R29= RECORD DISTANCE PER PARCEL MAP 8698 P.M. 37/90

- IP = IRON PIPE
- FD = FOUND
- NTG = NOTHING
- DIST = DISTANCE
- PROP = PROPORTIONATE
- R & M = RECORD AND MEASURED

SEE SHEET 10 OF 11



SEE SHEET 5 OF 11
SEE SHEET 4 OF 11
SEE SHEET 4 OF 11

SEE DETAIL "A" SHEET 10 OF 11

COPY

IN THE CITY OF RIVERSIDE, COUNTY OF RIVERSIDE, AND IN THE UNINCORPORATED TERRITORY OF THE COUNTY OF RIVERSIDE, STATE OF CALIFORNIA

RECORD OF SURVEY

BEING A PORTION OF SECTIONS 13, 14, 15, 16, 17, 21, 22, 23, 24, 25, 26, 27, 28, 31, 33, 34, 35 AND 36 TOWNSHIP 3 SOUTH, RANGE 4 WEST, SAN BERNARDINO BASE AND MERIDIAN

PSOMAS WALTER A. SHEEK PLS 4838

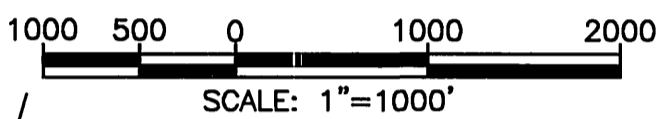
DATE OF SURVEY: SEPTEMBER-OCTOBER 2000

SURVEYOR'S NOTE:

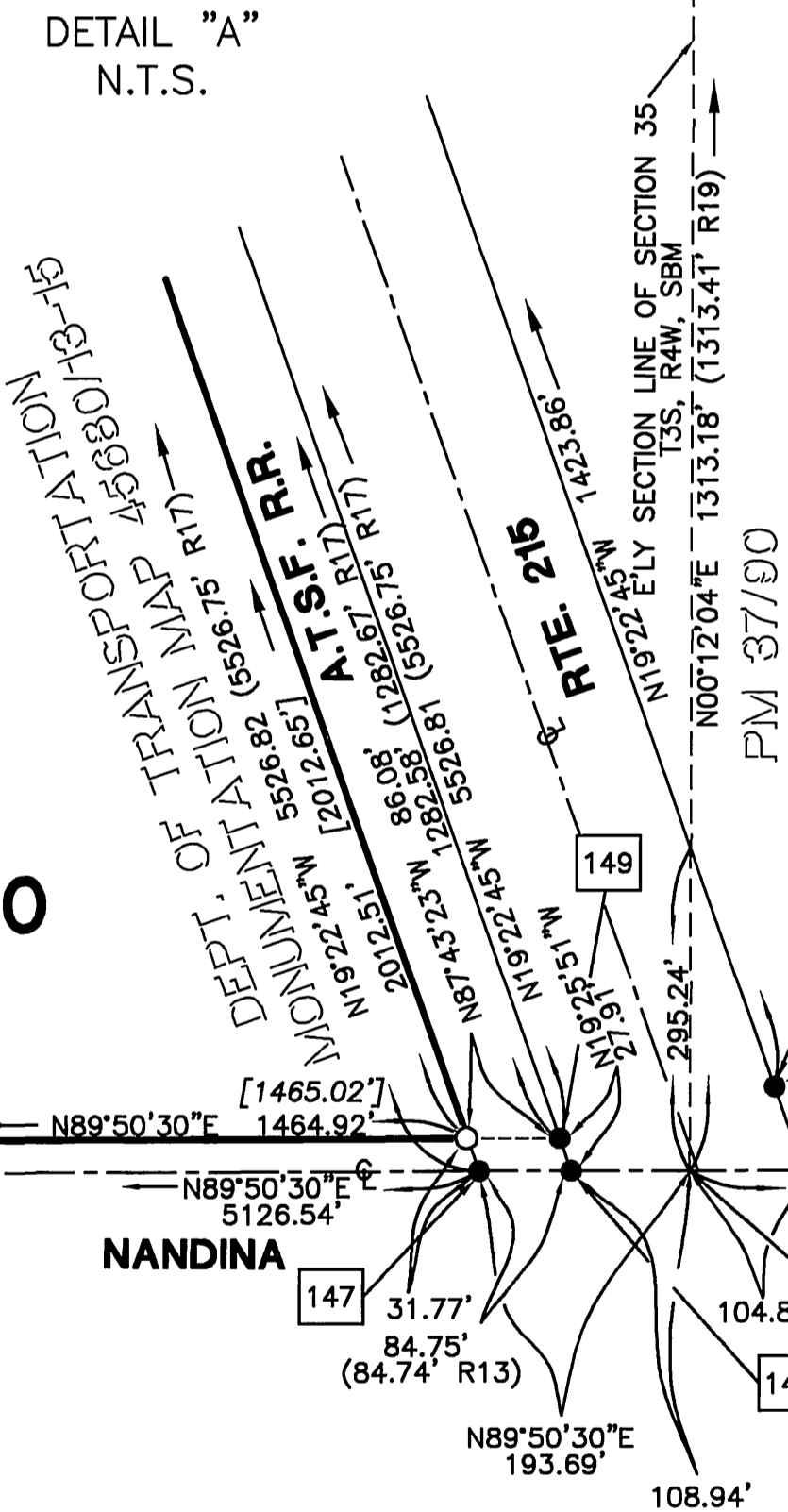
ALL DISTANCES SHOWN HEREON ARE GRID DISTANCES. GROUND DISTANCES MAY BE OBTAINED BY MULTIPLYING GRID DISTANCES BY A COMBINATION FACTOR OF 1.00007058. ALL RECORD DISTANCES HAVE BEEN ADJUSTED TO GRID DISTANCES USING THE ABOVE COMBINATION FACTOR. DISTANCES SHOWN IN BRACKETS [345.74'] HAVE BEEN ADJUSTED TO GROUND DISTANCES USING THE ABOVE COMBINATION FACTOR.

SURVEYOR NOTES:

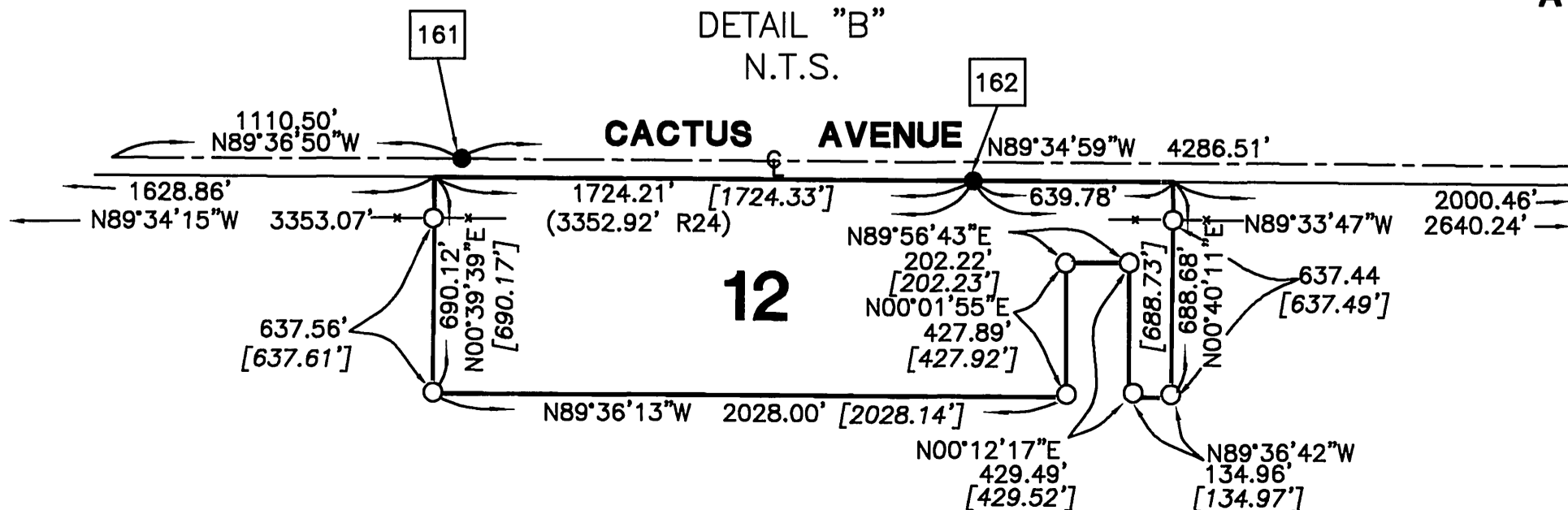
- = SET 1"IP WITH PLASTIC PLUG FLUSH "LS 4838" UNLESS NOTED OTHERWISE.
- = FOUND MONUMENTATION AS NOTED SEE SHEET 11 OF 11 FOR DESCRIPTION
- R17= RECORD DISTANCE PER CALIF. DEPT. OF TRANSPORTATION MONUMENTATION MAP No. 453860-13 (RIV. CO. MAP 205-234)
- R18= RECORD DISTANCE PER CALIF. DEPT. OF TRANSPORTATION MONUMENTATION MAP No. 453860-14 (RIV. CO. MAP 205-235)
- R19= RECORD DISTANCE PER CALIF. DEPT. OF TRANSPORTATION MONUMENTATION MAP No. 453860-15 (RIV. CO. MAP 205-236)
- R20= RECORD DISTANCE PER RECORD OF SURVEY RS 75/66
- R21= RECORD DISTANCE PER PARCEL MAP 14264 PM 82/66-67
- R23= RECORD DISTANCE PER RECORD OF SURVEY RS 106/87
- R24= RECORD DISTANCE PER CALIF. DEPT. OF TRANSPORTATION MONUMENTATION MAP No. 435571-4 (RIV. CO. MAP 205-250)
- R25= RECORD DISTANCE PER RECORD OF SURVEY RS 13/72
- R26= RECORD DISTANCE PER RECORD OF SURVEY RS 68/95
- IP = IRON PIPE
- FD = FOUND
- NTG = NOTHING
- DIST. = DISTANCE
- PROP. = PROPORTIONATE
- R & M = RECORD AND MEASURED
- N.T.S. = NOT TO SCALE
- x-x = EXISTING CHAIN LINK FENCE



DETAIL "A" N.T.S.



DETAIL "B" N.T.S.



SEE SHEET 9 OF 11

10

11

13

Copy

R/S 110/40

CITY COPY

IN THE CITY OF RIVERSIDE, COUNTY OF RIVERSIDE, AND IN THE UNINCORPORATED TERRITORY OF THE COUNTY OF RIVERSIDE, STATE OF CALIFORNIA

SHEET 11 OF 11 SHEETS

RECORD OF SURVEY

BEING A PORTION OF SECTIONS 13, 14, 15, 16, 17, 21, 22, 23, 24, 25, 26, 27, 28, 31, 33, 34, 35 AND 36 TOWNSHIP 3 SOUTH, RANGE 4 WEST, SAN BERNARDINO BASE AND MERIDIAN PSOMAS WALTER A. SHEEK PLS 4838 DATE OF SURVEY: SEPTEMBER-OCTOBER 2000

- 1 FOUND 1" IP DOWN 0.20 W / TAG "LS 3018" IN LIEU OF TAG "LS 4449" AS SHOWN ON RS 70/85
- 2 FOUND 1 1/2" BRASS DISK DOWN 0.20 ILLEGIBLE PER TRACT MAP 3308 MB 55/88-89 ACCEPTED AS THE NW COR. SEC. 16
- 3 FOUND 1 1/2" BRASS DISK DOWN 0.3 ACCEPTED AS THE NORTH 1/4 COR. SEC. 16 PER RS 46/73
- 4 FOUND 3/4" IP W/TAG DOWN 0.2 "RCE 862" PER PM 137/65-67
- 5 FOUND 3/4" IP W/TAG DOWN 0.2 "RCE 862" NO REF. ACCEPTED AS THE CENTER OF SECTION 16
- 7 FOUND 2" IP DOWN 0.5 NO TAG PER TRACT MAP 3308 MB 55/88-89, SET TAG "LS 4838"
- 8 FOUND 1" IP W/TAG FLUSH "RCE 33644" NO REF.
- 9 FOUND 3/4" IP W/PP DOWN 0.5 "LS 3018" PER PM 137/65-67
- 10 FOUND 3/4" IP NO TAG DOWN 0.38 PER RS 46/73 SET TAG "LS 4838" ACCEPTED AS THE WEST 1/8 COR OF THE NW 1/4 OF SEC. 16
- 14 FOUND 3/4" IP UP 0.2 "RCE 862" PER PM 137/65-67 & MB 98/53-55
- 15 FOUND 1" IP W/PP & NAIL DN. 0.2' SET TAG "LS 4838" NO REF. ACCEPTED AS THE SE COR. OF PARCEL 3 OF PM 7/8-12
- 16 FOUND 2" IP DOWN 0.92 "RCE 862" PER PM 7/8-12
- 17 FOUND 1" IP FLUSH W/PP "RCE 17550" NO REF. ACCEPTED AS THE WEST 1/4 COR SEC. 16
- 18 FOUND 3/4" IP W/PP DOWN 1.0 "RCE 862" PER RS 46/73 & PM 137/65-67
- 19 FOUND 1" IP W/PP DOWN 0.75 "LS 3018" PER RS 46/73 & PM 137/65-67
- 20 FOUND 3/4" IP DOWN 0.6 "RCE 862" PER RS 84/58 ACCEPTED AS SOUTH 1/4 COR SEC. 16
- 21 FOUND 3/4" IP UP 0.3 "LS 3163" N89°52'53"E 0.21' FROM COR. PER RS 84/58
- 22 FOUND 1" IP FLUSH W/PP "LS 3018" PER RS 84/58-59
- 23 FOUND 1" IP FLUSH W/PP "LS 3018" PER RS 97/57
- 24 FOUND 1 1/2" BRASS CAP DOWN 0.2 "ILLEGIBLE" PER RS 97/57
- 25 FOUND 1" IP W/PP DOWN 0.3 "LS 3018" PER RS 97/57
- 26 FOUND 1" IP W/PP & NAIL DOWN 0.3 "ILLEGIBLE" PER RS 97/57
- 27 FOUND 1" IP DOWN 0.3 "LS 3018" PER RS 84/58 & RS 97/57
- 29 FOUND 1 1/4" IP UP 0.8 W / TAG STAMPED S21-S22-S27-S28 T3S R4W ACCEPTED AS SECTION CORNER PER RS 84/58-59
- 30 FOUND 1" IP W/PP UP 0.2 "RCE 17550" NO REF. N56°20'10"E 0.27' FROM CORNER
- 31 FOUND 1 1/4" BRASS CAP DOWN 0.4' IN WELL STAMPED "20/21/28/28" ACCEPTED AS THE SECTION CORNER PER RS 84/58-59
- 32 FOUND COPPERWELD CSM FLUSH STAMPED "358+17+00 P.O.C." PER RS 84/37
- 33 FOUND 1 1/2" COPPERWELD CSM DOWN 0.15 STAMPED "9+82.00 E.C. PER RS 84/37
- 34 FOUND 1 1/2" COPPERWELD CSM DOWN 0.10 STAMPED "6+51.80 R.R.C." PER RS 84/37
- 35 FOUND 1 1/2" COPPERWELD CSM DOWN 0.10 STAMPED "4+35.82 B.C. PER RS 84/37
- 36 FOUND 1" IP W/PP FLUSH "LS 3035" PER RS 84/37
- 37 FOUND 1" IP W/PP FLUSH "LS 3035" PER RS 84/37
- 38 FOUND 1" IP W/PP FLUSH "LS 3035" PER RS 84/37
- 39 FOUND 1" IP W/PP FLUSH "LS 3035" PER RS 84/37
- 40 FOUND 1" IP W/PP FLUSH "LS 3035" PER RS 84/37
- 41 FOUND 1" IP W/PP FLUSH "LS 3035" PER RS 84/37
- 42 FOUND 1" IP W/TAG STAMPED "RIV. CO. SURVEYOR" PER RS 108/9-12 ACCEPTED AS W 1/4 COR. SEC 28
- 43 FOUND 1" IP W/PP "RIV. CO. SURVEYOR" PER RS 108/9-12
- 44 FOUND 1" IP W/PP "RIV. CO. SURVEYOR" PER RS 108/9-12
- 45 FOUND 1" IP W/PP "RIV. CO. SURVEYOR" PER RS 108/9-12
- 46 FOUND 1" IP W/PP "RIV. CO. SURVEYOR" PER RS 108/9-12
- 47 FOUND 1" IP W/PP "RIV. CO. SURVEYOR" PER RS 108/9-12
- 48 FOUND 1" IP W/PP FLUSH "LS 3035" PER RS 84/37
- 49 FOUND 1" IP W/PP "RIV. CO. SURVEYOR" PER RS 108/9-12
- 50 FOUND 1" IP FLUSH W/PP "LS 5390" PER RS 108/9-12
- 51 FOUND SPK & WASHER 1 1/2" BRASS WASH FLUSH "RIV. CO. SURVEYOR" ACCEPTED AS THE SECTION CORNER PER RS 108/9-12
- 52 FOUND 1" IP W/PP "RIV. CO. SURVEYOR" PER RS 108/9-12
- 53 FOUND 1 1/4" IP DOWN 0.5 W / TAG "LS 2348" ACCEPTED AS THE EAST 1/4 COR. OF SECTION 32 PER RS 108/9-12
- 54 FOUND 1" IP W/PP "RIV. CO. SURVEYOR" PER RS 108/9-12
- 55 FOUND 2X2 W/NAIL & TAG FLUSH "RIV. CO. SURVEYOR" ON TOP OF 3/4" IP DN. 1.7' "LS 2661" PER RS 108/9-12 TB 100/210, RS 108/9-12 ACCEPTED AS CENTER OF SEC. 34
- 58 FOUND 2X2 W/NAIL & TAG DOWN 0.5 "RIV. CO. SURVEYOR" ON TOP OF 3/4" IP DN. 2.1' ILLEGIBLE PER RS 108/9-12
- 59 FOUND 1" IP W/TAG DOWN 0.5 STAMPED "RCE 23713" PER RS 84/20
- 60 FOUND 1X2 W/NAIL & TAG DOWN 0.2 "RIV. CO. SURVEYOR" PER RS 108/9-12
- 61 FOUND 1" IP W/PP "RIV. CO. SURVEYOR" PER RS 108/9-12
- 62 FOUND 2X2 W/TAG DOWN 2.0 "RIV. CO. SURVEYOR" PER RS 108/9-12
- 63 FOUND 1" IP W/PP "RIV. CO. SURVEYOR" PER RS 108/9-12
- 64 FOUND 1" IP W/PP "RIV. CO. SURVEYOR" PER RS 108/9-12
- 65 FOUND 1" IP W/PP "RIV. CO. SURVEYOR" PER RS 108/9-12
- 66 FOUND 1" IP W/PP "RIV. CO. SURVEYOR" PER RS 108/9-12
- 67 FOUND 1" IP W/PP "RIV. CO. SURVEYOR" PER RS 108/9-12
- 68 FOUND 1" IP W/PP "RIV. CO. SURVEYOR" PER RS 108/9-12
- 69 FOUND 1" IP FLUSH W/PP "LS 5390" PER RS 108/9-12
- 70 FOUND COPPERWELD CSM DOWN 0.4 STAMPED "367+28.323 EC" PER RS 84/37
- 71 FOUND 2" IP NO TAG WITH NAIL DOWN 2.0' ACCEPTED AS THE SOUTH 1/4 CORNER OF SECTION 22 SET TAG "LS 4838"
- 72 FOUND COPPERWELD CSM STAMPED 378+90.92 BC DOWN 0.3 PER RS 84/37
- 73 FOUND "C" NAIL AND TIN FLUSH N89°46'06"W 1.03' FROM E.C. NO REF.
- 74 FOUND BOAT SPIKE & WASHER "LS 4055" NO REF. ACCEPTED AS SW COR. OF PARCEL 14
- 75 FOUND 1 1/2" IP & TAG "LS 4055" NO REF. ACCEPTED AS THE NW COR. PARCEL 14
- 76 FOUND 1 1/2" IP & TAG "LS 4055" NO REF. ACCEPTED AS THE NE COR. OF PARCEL 14
- 77 FOUND 1 1/2" IP & TAG "LS 4055" NO REF. ACCEPTED AS THE SE COR. OF PARCEL 14
- 78 FOUND 1" IP W/PP DOWN 0.6 "RIV. CO. SURVEYOR" PER MAP 798-WW ACCEPTED AS THE P.I. OF THE C/L OF VAN BUREN BLVD.
- 79 FOUND 11/2" BRASS CAP DN 0.4' STAMPED "9,10,16,15" ACCEPTED AS THE SECTION CORNER PER RIV. CO. FB 2058 SUR. NO. 4976
- 80 FOUND 2 1/4" BRASS DISK STAMPED EP "186+50.44 WFR C/L IMP ALESS" PER CALIF. DEPT. OF TRANS. MON. MAP NO. 435571-7 (RIV. CO. MAP 205-253)
- 81 FOUND 2 1/4" BRASS DISK STAMPED "1/4 COR 10/15 T3S R4W SBM" PER CALIF. DEPT. OF TRANS. MON. MAP NO.435571-8 (RIV. CO. MAP 205-254)
- 82 FOUND 2 1/4" BRASS DISK STAMPED "200+00 CENTERLINE IMP ALESS AT C/L RTE 215" PER CALIF. DEPT. OF TRANS. MON. MAP NO.435571-8 (RIV. CO. MAP 205-254)
- 83 FOUND 1 1/2" COPPERWELD CSM MON STAMPED "RIV. CO. SURVEYOR" PI C/L PER RIV. CO. MAP 205-254 & FB 2058 SUR. NO. 4976
- 84 FOUND 3/4" IP W/PP DOWN 0.70 "RCE 862" PER PM 137/65-67
- 85 FOUND 3/4" IP W/NAIL FLUSH NO TAG PER RS 84/58 SET TAG "LS 4838"
- 86 FOUND 1" IP FLUSH STAMPED "RCE 9876" PER PM 38/8
- 87 FOUND 1" IP FLUSH STAMPED "RCE 9876" PER PM 38/8
- 88 FOUND 2" IP NO TAG WITH NAIL DOWN 1.5 PER RS 84/58 ACCEPTED AS THE CENTER OF SECTION 22 SET TAG "LS 4838"
- 89 FOUND 2 1/4" BRASS DISK STAMPED 192+90.12 CENTERLINE IMP ALESS & RR CROSSING PER CALIF. DEPT. OF TRANS. MON. MAP NO.435571-8 (RIV. CO. MAP 205-254)
- 90 FOUND 2 1/4" BRASS CAP FLUSH "481+91.46 EC CENTERLINE W FR" PER CALIF. DEPT. OF TRANS. MON. MAP NO.435571-6 (RIV. CO. MAP 205-252)
- 92 FOUND 1" IP W/PP DOWN 0.3 "CALIF DOT" PER CALIF. DEPT. OF TRANS. MON. MAP NO.435571-3 (RIV. CO. MAP 205-249)
- 93 FOUND 1" IP W/PP DOWN 0.1 "CALIF DOT" PER CALIF. DEPT. OF TRANS. MON. MAP NO.435571-3 (RIV. CO. MAP 205-249)
- 94 FOUND 1" IP W/PP DOWN 0.3 "CALIF DOT" PER CALIF. DEPT. OF TRANS. MON. MAP NO.435571-3 (RIV. CO. MAP 205-249)
- 95 FOUND 1" IP W/PP DOWN 0.2 "CALIF DOT" PER CALIF. DEPT. OF TRANS. MON. MAP NO.435571-3 (RIV. CO. MAP 205-249)
- 96 FOUND 3" BRASS CAP DOWN 0.5 STAMPED " SOUTHERN CALIFORNIA GAS CO. RE 212 DATE 4 1941" PER CALIF. DEPT. OF TRANS. MON. MAP NO.435571-3 (RIV. CO. MAP 205-249)
- 97 FOUND 3" BRASS CAP DOWN 0.7 STAMPED " SOUTHERN CALIFORNIA GAS CO. RE 212 DATE 4 1941" PER CALIF. DEPT. OF TRANS. MON. MAP NO.435571-3 (RIV. CO. MAP 205-249)
- 98 FOUND 1" IP W/PP DOWN 0.3 "DOT" PER DEPT. OF TRANSPORTATION MONUMENT MAP NO.435571-8 (RIV. CO. MAP 205-253)
- 99 FOUND 2 1/4" BRASS DISK FLUSH CALTRANS "504+59.86 EC CENTERLINE W FR" F
- 100 FOUND 1" IP W/PP DOWN 0.6 "DOT WEST R/W I-215" PER CALIF. DEPT. OF TRANS. MON. MAP NO.435571-8 (RIV. CO. MAP 205-254)
- 101 FOUND 1" IP W/PP DOWN 0.3 "DOT WEST R/W I-215 DOWN 2" PER CALIF. DEPT. OF TRANS. MON. MAP NO.435571-8 (RIV. CO. MAP 205-254)
- 102 FOUND 1" IP W/PP DOWN 0.5 "DOT WEST R/W I-215 DOWN 2" PER CALIF. DEPT. OF TRANS. MON. MAP NO.435571-8 (RIV. CO. MAP 205-254)
- 103 FOUND 1" IP W/PP DOWN 0.6 "DOT WEST R/W I-215 DOWN 2" PER CALIF. DEPT. OF TRANS. MON. MAP NO.435571-8 (RIV. CO. MAP 205-254)
- 104 FOUND 1" IP W/PP DOWN 0.2 "DOT WEST R/W I-215 DOWN 2" PER CALIF. DEPT. OF TRANS. MON. MAP NO.435571-8 (RIV. CO. MAP 205-254)
- 105 FOUND 1" IP W/PP DOWN 0.5 "DOT WEST R/W I-215 DOWN 2" PER CALIF. DEPT. OF TRANS. MON. MAP NO.435571-8 (RIV. CO. MAP 205-254)
- 106 FOUND 1" IP W/PP DOWN 0.6 "DOT WEST R/W I-215 DOWN 2" PER CALIF. DEPT. OF TRANS. MON. MAP NO.435571-8 (RIV. CO. MAP 205-254)
- 107 FOUND 1" IP W/PP DOWN 0.3 "CALIF DOT" PER CALIF. DEPT. OF TRANS. MON. MAP NO.435571-8 (RIV. CO. MAP 205-254)
- 108 FOUND 1" IP W/PP DOWN 0.4 "CALIF DOT" PER CALIF. DEPT. OF TRANS. MON. MAP NO.435571-8 (RIV. CO. MAP 205-254)
- 109 2 1/4 BRASS DISK FLUSH C/L CACTUS STAMPED "193+34.94 EC C/L CACTUS" PER CALIF. DEPT. OF TRANS. MON. MAP NO.435571-5 (RIV. CO. MAP 205-251)
- 110 FOUND 1" IP W/PP DOWN 0.3 "CALIF DOT" PER CALIF. DEPT. OF TRANS. MON. MAP NO.435571-8 (RIV. CO. MAP 205-254)
- 111 FOUND 1" IP W/PP DOWN 0.2 "CALIF DOT" PER CALIF. DEPT. OF TRANS. MON. MAP NO.435571-8 (RIV. CO. MAP 205-254)
- 112 FOUND 1" IP W/PP DOWN 0.1 "CALIF DOT" PER CALIF. DEPT. OF TRANS. MON. MAP NO.435571-8 (RIV. CO. MAP 205-254)
- 113 FOUND 2 1/4" BRASS DISK CALTRANS STAMPED "C/L IMP 215 = C/L IMP CACTUS" PER CALIF. DEPT. OF TRANS. MON. MAP NO.435571-4 (RIV. CO. MAP 205-250)
- 114 FOUND 1" IP W/PP DOWN 0.4 "CALIF DOT" PER CALIF. DEPT. OF TRANS. MON. MAP NO.435571-8 (RIV. CO. MAP 205-254)
- 115 FOUND 1" IP W/PP DOWN 0.5 "CALIF DOT" PER CALIF. DEPT. OF TRANS. MON. MAP NO.435571-8 (RIV. CO. MAP 205-254)
- 116 FOUND 1" IP W/PP DOWN 0.3 "CALIF DOT" PER CALIF. DEPT. OF TRANS. MON. MAP NO.435571-8 (RIV. CO. MAP 205-254)
- 117 FOUND 1" IP W/PP DOWN 0.5 "CALIF DOT" PER CALIF. DEPT. OF TRANS. MON. MAP NO.435571-8 (RIV. CO. MAP 205-254)
- 118 FOUND 1" IP W/PP FLUSH "CALIF DOT" PER CALIF. DEPT. OF TRANS. MON. MAP NO.435571-8 (RIV. CO. MAP 205-254)
- 119 FOUND 1" IP W/PP DOWN 0.3 "CALIF DOT" PER CALIF. DEPT. OF TRANS. MON. MAP NO.435571-8 (RIV. CO. MAP 205-254)
- 120 FOUND 1" IP W/PP DOWN 0.2 "CALIF DOT" PER CALIF. DEPT. OF TRANS. MON. MAP NO.435571-8 (RIV. CO. MAP 205-249)
- 121 FOUND 1" IP W/PP DOWN 0.2 "CALIF DOT" PER CALIF. DEPT. OF TRANS. MON. MAP NO.435571-3 (RIV. CO. MAP 205-249)
- 122 FOUND 2 1/4" BRASS CAP FLUSH "95+00.00 CENTERLINE ARNOLD 100+00.00 CENTERLINE CACTUS AVE. CONN" PER CALIF. DEPT. OF TRANS. MON. MAP NO.435571-8 (RIV. CO. MAP 205-252)
- 123 FOUND 2 1/4" BRASS CAP FLUSH "167+68.93 BC CENTERLINE CACTUS& 100+00.00 CENTERLINE ARNOLD - 470+00.00 BC" PER CALIF. DEPT. OF TRANS. MON. MAP NO.435571-8 (RIV. CO. MAP 205-252)
- 124 FOUND 2 1/4" BRASS DISK CALTRANS STAMPED "C/L IMP 215 = C/L IMP CACTUS" PER CALIF. DEPT. OF TRANS. MON. MAP NO.435571-4 (RIV. CO. MAP 205-250)
- 125 FOUND 1" IP W/PP W/PP "CAL DOT" PER CALIF. DEPT. OF TRANS. MON. MAP NO.443512-4 (RIV. CO. MAP 205-249)
- 126 FOUND 1" IP FLUSH W/PP "CAL DOT" PER CALIF. DEPT. OF TRANS. MON. MAP NO.443512-4 (RIV. CO. MAP 205-249)
- 127 FOUND 1" IP FLUSH W/PP "CAL DOT" PER CALIF. DEPT. OF TRANS. MON. MAP NO.443512-4 (RIV. CO. MAP 205-249)
- 128 FOUND 1" IP FLUSH W/PP "CAL DOT" PER CALIF. DEPT. OF TRANS. MON. MAP NO.443512-4 (RIV. CO. MAP 205-249)
- 129 FOUND 1" IP W/TAG DOWN 0.2 "LS 3365" PER PM 37/90, PM 82/68-67
- 130 FOUND 1" IP W/PP DOWN 0.15 "CALIF DOT" PER CALIF. DEPT. OF TRANS. MON. MAP NO.443512-4 (RIV. CO. MAP 205-249)
- 131 FOUND 1" IP W/PP DOWN 0.30 "CALIF DOT" PER CALIF. DEPT. OF TRANS. MON. MAP NO.443512-4 (RIV. CO. MAP 205-249)
- 132 FOUND 1" IP W/PP DOWN 0.20 "CALIF DOT" PER CALIF. DEPT. OF TRANS. MON. MAP NO. 453680-14 (RIV. CO. MAP 205-235)
- 133 FOUND 1" IP W/PP FLUSH "CALIF DOT" PER CALIF. DEPT. OF TRANS. MON. MAP NO. 453680-14 (RIV. CO. MAP 205-235)
- 134 FOUND 1" IP W/PP DOWN 0.3 "DOT CALIF" CALIF DOT" PER CALIF. DEPT. OF TRANS. MON. MAP NO.453680-14 (RIV. CO. MAP 205-235)
- 135 FOUND 1" IP W/PP DOWN 0.6 "DOT CALIF" CALIF DOT" PER CALIF. DEPT. OF TRANS. MON. MAP NO.453680-14 (RIV. CO. MAP 205-235)
- 136 FOUND 1" IP W/PP DOWN 0.6 "DOT CALIF" CALIF DOT" PER CALIF. DEPT. OF TRANS. MON. MAP NO.453680-14 (RIV. CO. MAP 205-235)
- 137 FOUND 1" IP W/PP DOWN 0.6 "DOT CALIF" CALIF DOT" PER CALIF. DEPT. OF TRANS. MON. MAP NO.453680-14 (RIV. CO. MAP 205-235)
- 138 FOUND 1" IP W/PP DOWN 1.5 "CALIF DOT" CALIF DOT" PER CALIF. DEPT. OF TRANS. MON. MAP NO.453680-13 (RIV. CO. MAP 205-234)
- 139 FOUND 2 1/4" BRASS DISK FLUSH STAMPED " 2 S. PAR. = C/L V.B.B." PER CALIF. DEPT. OF TRANS. MON. MAP NO.453680-4 (RIV. CO. MAP 205-235)
- 140 FOUND 1" IP FLUSH W/TAG "LS 3365" PER PM 82/68-67
- 141 FOUND 1" IP W/TAG DOWN 0.2 "LS 3365" PER PM 37/90 & PM 53/62
- 142 FOUND 3/4" IP W/TAG DOWN 0.2 "LS 3365" PER PM 37/90 & PM 53/62
- 143 FOUND 3/4" IP DOWN 1.7 "LS 3163" PER PM 37/90
- 144 FOUND 1" IP W/TAG "LS 3365" PER PM 82/68-67
- 145 FOUND 1" IP DOWN 0.3 W/PP "CALIF DOT" PER RS 101/68
- 146 FD. 6X6 CONC BOX W/NAIL N20 43°31'W 0.52' FROM CORNER, PER CALIF. DEPT. OF TRANS. MON. MAP NO.453680-13 (RIV. CO. MAP 205-234)
- 147 FOUND 2" IP DOWN 2.0 W/TAG "LS 3365" PER CALIF. DEPT. OF TRANS. MON. MAP NO.453680-13 (RIV. CO. MAP 205-234)
- 148 FOUND 1" IP W/PP "DOT" CALIF DOT" PER CALIF. DEPT. OF TRANS. MON. MAP NO.453680-13 (RIV. CO. MAP 205-234)
- 149 FOUND 1" IP W/PP DOWN 0.4 "CALIF DOT" PER CALIF. DEPT. OF TRANS. MON. MAP NO.453680-13 (RIV. CO. MAP 205-234)
- 150 FOUND ARMY CORP'S OF ENGINEERS BRASS CAP DOWN 1.2' PER DRAWING NO. 15-06-33 ON FILE WITH THE CORP'S OF ENGINEERS
- 151 FOUND ARMY CORP'S OF ENGINEERS BRASS CAP DOWN 0.9' PER DRAWING NO. 15-06-33 ON FILE WITH THE CORP'S OF ENGINEERS
- 152 FOUND 1" IP W/PP DOWN 0.8 "DOT" PER CALIF. DEPT. OF TRANS. MON. MAP NO.453680-13 (RIV. CO. MAP 205-234)
- 153 FOUND 1" IP W/PP "DOT" DOWN 1.6 PER CALIF. DEPT. OF TRANS. MON. MAP NO.453680-13 (RIV. CO. MAP 205-234)
- 154 FOUND 1" IP W/PP DOWN 1.5 "CALIF DOT" PER CALIF. DEPT. OF TRANS. MON. MAP NO.453680-14 (RIV. CO. MAP 205-235)
- 155 FOUND 1" IP W/PP DOWN 1.0 "DOT" PER CALIF. DEPT. OF TRANS. MON. MAP NO.453680-14 (RIV. CO. MAP 205-235)
- 156 FOUND 1" IP W/PP DOWN 1.4 "DOT" PER CALIF. DEPT. OF TRANS. MON. MAP NO.453680-14 (RIV. CO. MAP 205-235)
- 157 FOUND 1" IP W/PP DOWN 0.5 "CALIF DOT" PER CALIF. DEPT. OF TRANS. MON. MAP NO.453680-13 (RIV. CO. MAP 205-234)
- 158 FOUND 1" IP W/PP DOWN 0.7 "CALIF DOT" PER CALIF. DEPT. OF TRANS. MON. MAP NO.453680-13 (RIV. CO. MAP 205-234)
- 159 FOUND 2 1/4" BRASS DISK CALTRANS STAMPED "C/L CACTUS 221-17.57 BC" PER CALIF. DEPT. OF TRANS. MON. MAP NO.435571-4 (RIV. CO. MAP 205-250)
- 160 FOUND 2 1/4" BRASS DISK STAMPED "C/L CACTUS 224+63.38 EC" PER CALIF. DEPT. OF TRANS. MON. MAP NO.435571-4 (RIV. CO. MAP 205-250)
- 161 FOUND 1" IP DOWN 0.1 W/PP ILLEGIBLE NO REF. ACCEPTED AS A POINT ON THE NLY BNDY. OF MARCH AIR RESERVE BASE
- 162 FOUND 1" IP DOWN 0.2 W/PP "LS 3018" PER RS 106/87
- 163 FOUND 1" IP FLUSH W/TAG "RCE 13191" PER RS 106/87
- 164 FOUND 2" IP W/NAIL IN WELL DOWN 1.2' PER RS 106/87
- 165 FOUND 1" IP DOWN 0.8 W / TAG "LS 5137" PER RS 106/87
- 166 WELL MON 1" IP W/PP "PLS 5137" PER CR 98-120
- 167 FOUND 1 1/2" BRASS DISK FLUSH STAMPED "LS 4242" IN LIEU OF 1 1/2" IP NO TAG PER RS 65/53-62
- 168 FOUND 1 1/4" FLUSH IP W/TAG ILLEGIBLE PER RS 65/54-62
- 169 FOUND 3/4" BOLT AND ALUM WASHER STAMPED "LS 5139" PER CORNER RECORD NO. 00-04
- 170 FOUND 1" IP DOWN 0.25 W/PP STAMPED "PLS 5137" PER CORNER RECORD NO. 00-04
- 171 FOUND 3/4" IP FLUSH PER RIVERSIDE COUNTY FLOOD CONTROL FIELD NOTES PAGE 55 OF 58 OF SECTION RECOVERY.
- 172 FOUND 2" BRASS DISK FLUSH CALTRANS STAMPED "2X2 H&LS 3259"
- 173 FOUND 3/4" IP DOWN 0.6 "RCE 862" PER RS 84/58 ACCEPTED AS THE S.W. COR. SECTION 32 T3S R4W S.B.M.
- 174 FOUND 2 1/4" BRASS DISK FLUSH "C/L EFR = C/L CACTUS" PER CALIF. DEPT. OF TRANS. MON. MAP NO. 435571-4 (RIV. CO. MAP 205-250)

R/S 110/40