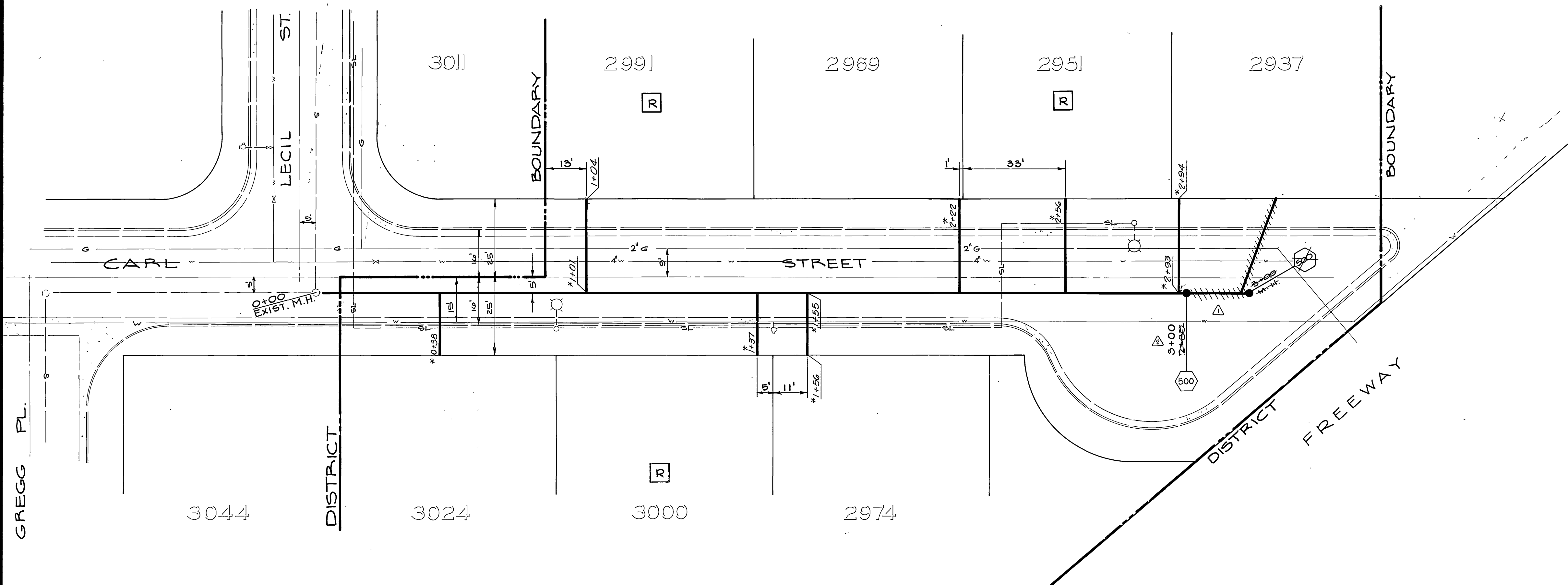


T.B.M. "A" CHISELED \square ON TOP OF CURB, WEST SIDE OF CARL, 13' E. OF E.C.P. AT S.W. CORNER OF CARL AND LECIL ST. ELEV. 940.95



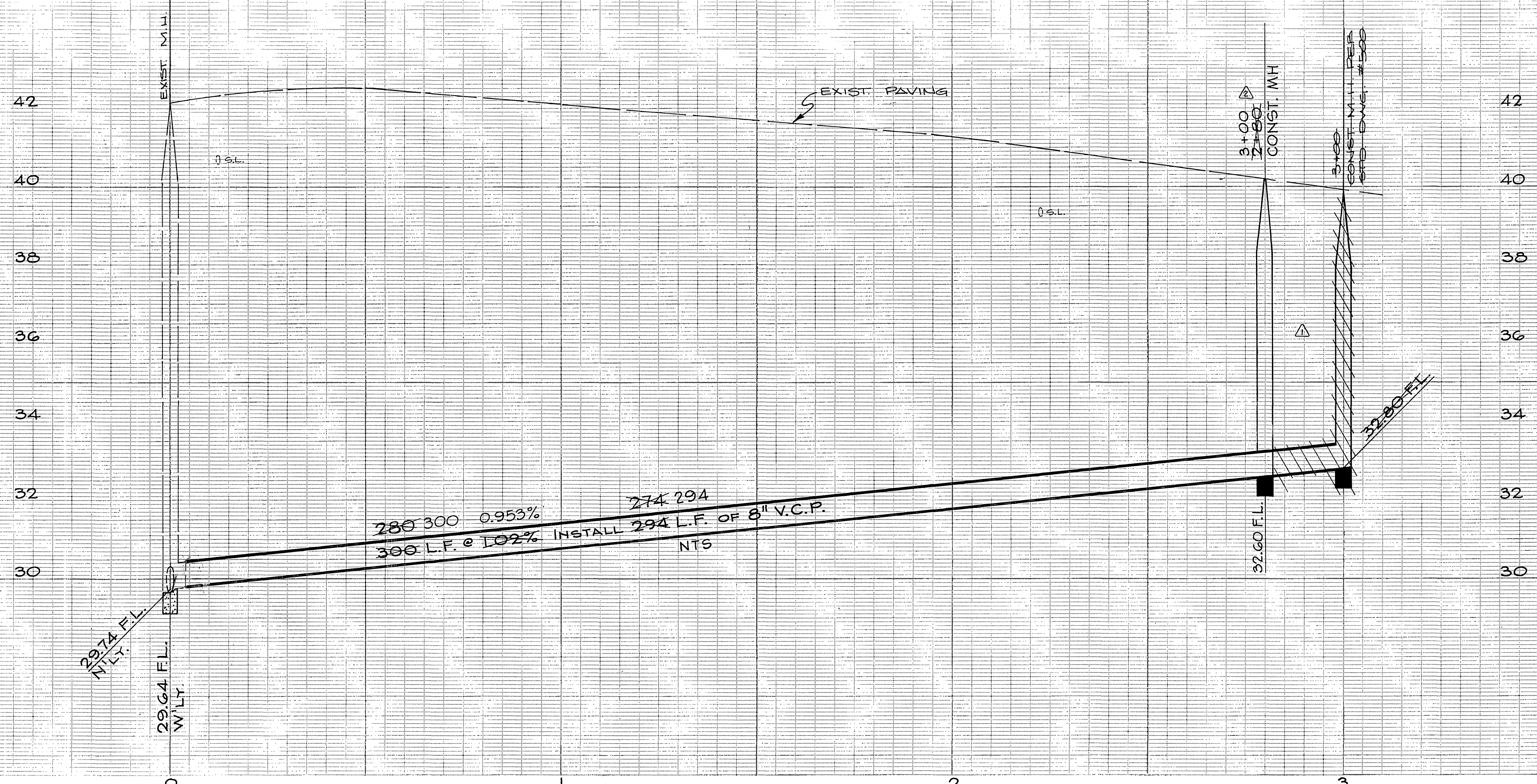
GENERAL NOTES

1. CONST. SHALL BE IN ACCORDANCE WITH STANDARD SPECIFICATIONS FOR PUBLIC WORKS CONSTRUCTION, 1973 EDITION AND CITY OF RIVERSIDE STD. DWGS.
 2. IT SHALL BE THE RESPONSIBILITY OF THE CONTRACTOR TO CLEAR THE RIGHT OF WAY IN ACCORDANCE WITH THE PROVISIONS OF THE LAW AS IT AFFECTS EACH UTILITY INCLUDING THE IRRIGATION LINES AND APPURTENANCES AND AT NO COST TO THE CITY.
 3. PIPE SHALL BE BEDDED PER CASE I, STD. DRAWING #452 UNLESS OTHERWISE SPECIFIED ON PLAN.
 4. CONST. M.H. RIM TO MEET EXIST. PAVING
 - 500 CONST. M.H. PER STD. DWG. 500
 5. BACKFILL AND RESURFACING SHALL BE PER STD. DWG #453, 7" FULL DEPTH A.C.
 - R PROPERTY OWNER HAS REQUESTED LOCATION OF LATERAL AS SHOWN. LETTER IS IN PWD FILE.
- INSTALL 8" VCP
 USE "1" OR, AT OPTION OF CONTRACTOR, USE "Y"
 INSTALL 4" VCP

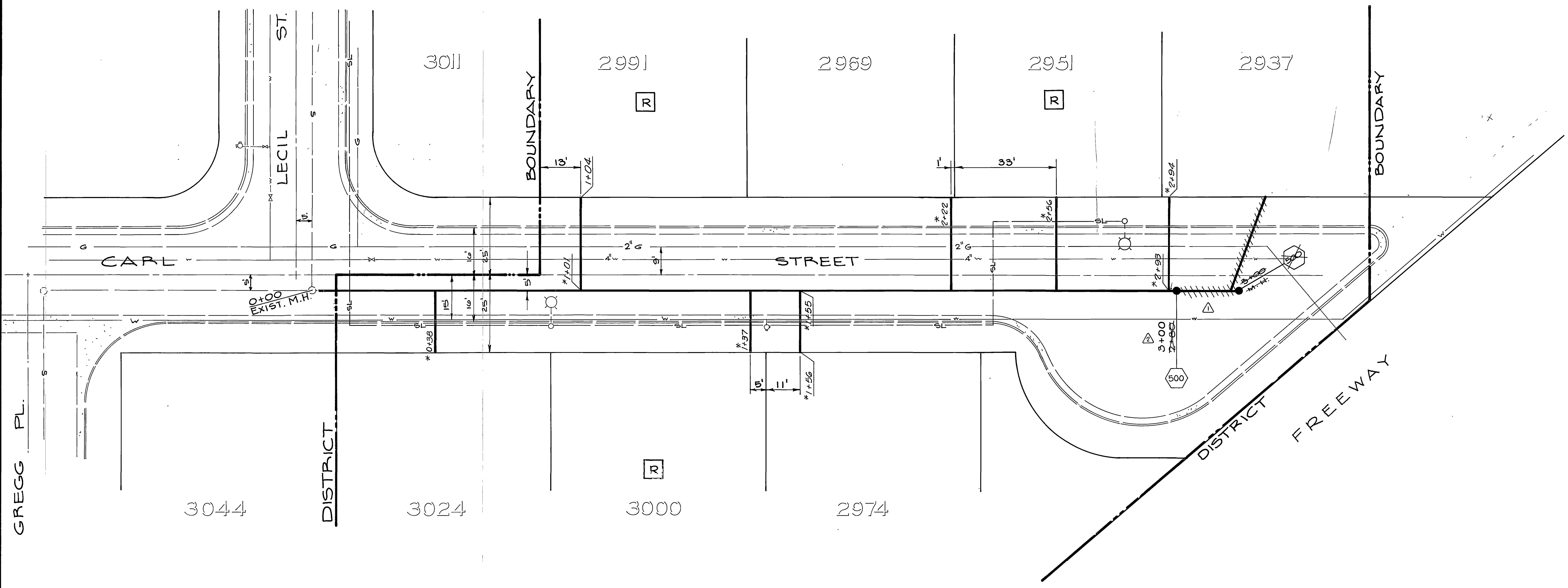
*AS BUILT 3-22-76 KET

Wally Hyle
 CHIEF ENGINEER - WATER

| | | | |
|--|--------------------------------------|--|---|
| CITY OF RIVERSIDE PUBLIC WORKS DEPARTMENT | | CARL STREET ASSESSMENT DISTRICT | |
| APPROVED BY PRINCIPAL ENGINEER PARK DEPARTMENT TRAFFIC DIVISION CHIEF P. W. ENGINEER | APPROVED BY PUBLIC WORKS DIRECTOR | DATE 9-11-75 | INDEXED ACCOUNT NO. 94-451-848 S-1007 SHEET 1 OF 1 FILE NO. |
| DESIGNED BY DRAWN BY CHECKED BY | | HORIZ. SCALE: 1" = 20' VERT. SCALE: 1" = 2' | |



T.B.M. "A" CHISELED ON TOP OF CURB, WEST SIDE OF CARL, 13' E.S. OF E.C.P. AT S.W. CORNER OF CARL AND LECIL ST. ELEV. 340.95



GENERAL NOTES

1. CONST. SHALL BE IN ACCORDANCE WITH STANDARD SPECIFICATIONS FOR PUBLIC WORKS CONSTRUCTION, 1973 EDITION AND CITY OF RIVERSIDE STD. DWGS.
 2. IT SHALL BE THE RESPONSIBILITY OF THE CONTRACTOR TO CLEAR THE RIGHT OF WAY IN ACCORDANCE WITH THE PROVISIONS OF THE LAW AS IT AFFECTS EACH UTILITY INCLUDING THE IRRIGATION LINES AND APPURTENANCES AND AT NO COST TO THE CITY.
 3. PIPE SHALL BE BEDDED PER CASE I, STD. DRAWING #452 UNLESS OTHERWISE SPECIFIED ON PLAN.
 4. CONST. M.H. RIM TO MEET EXIST. PAVING
 5. CONST. M.H. PER STD. DWG. 500
 6. BACKFILL AND RESURFACING SHALL BE PER STD. DWG #453, 7" FULL DEPTH A.C.
 7. PROPERTY OWNER HAS REQUESTED LOCATION OF LATERAL AS SHOWN. LETTER IS IN PWD FILE.
- INSTALL 8" VCP
 USE "I" OR, AT OPTION OF CONTRACTOR, USE "Y"
 INSTALL 4" VCP

*AS BUILT 3-22-76 KET

Walter Hoff
 CHIEF ENGINEER - WATER

| | | | | |
|--|--------------------------------------|---|-----------------|---------------------------------|
| CITY OF RIVERSIDE PUBLIC WORKS DEPARTMENT | | CARL STREET ASSESSMENT DISTRICT | | INDEXED ACCOUNT NO. 00-03-00 |
| APPROVED BY PRINCIPAL ENGINEER PARK DEPARTMENT TRAFFIC DIVISION CHIEF P. W. ENGINEER | APPROVED BY PUBLIC WORKS DIRECTOR | REVISIONS APPR. DATE | DATE 9-11-75 | SHEET 1 OF 1 |
| DESIGNED BY DRAWN BY CHECKED BY | | FROM LECIL STREET TO 300' NLY (SEWER) | | FILE NO. |
| HORIZ. SCALE: 1" = 20' | | VERT. SCALE: 1" = 2' | | S: 1007 |