

LOCATION MAP

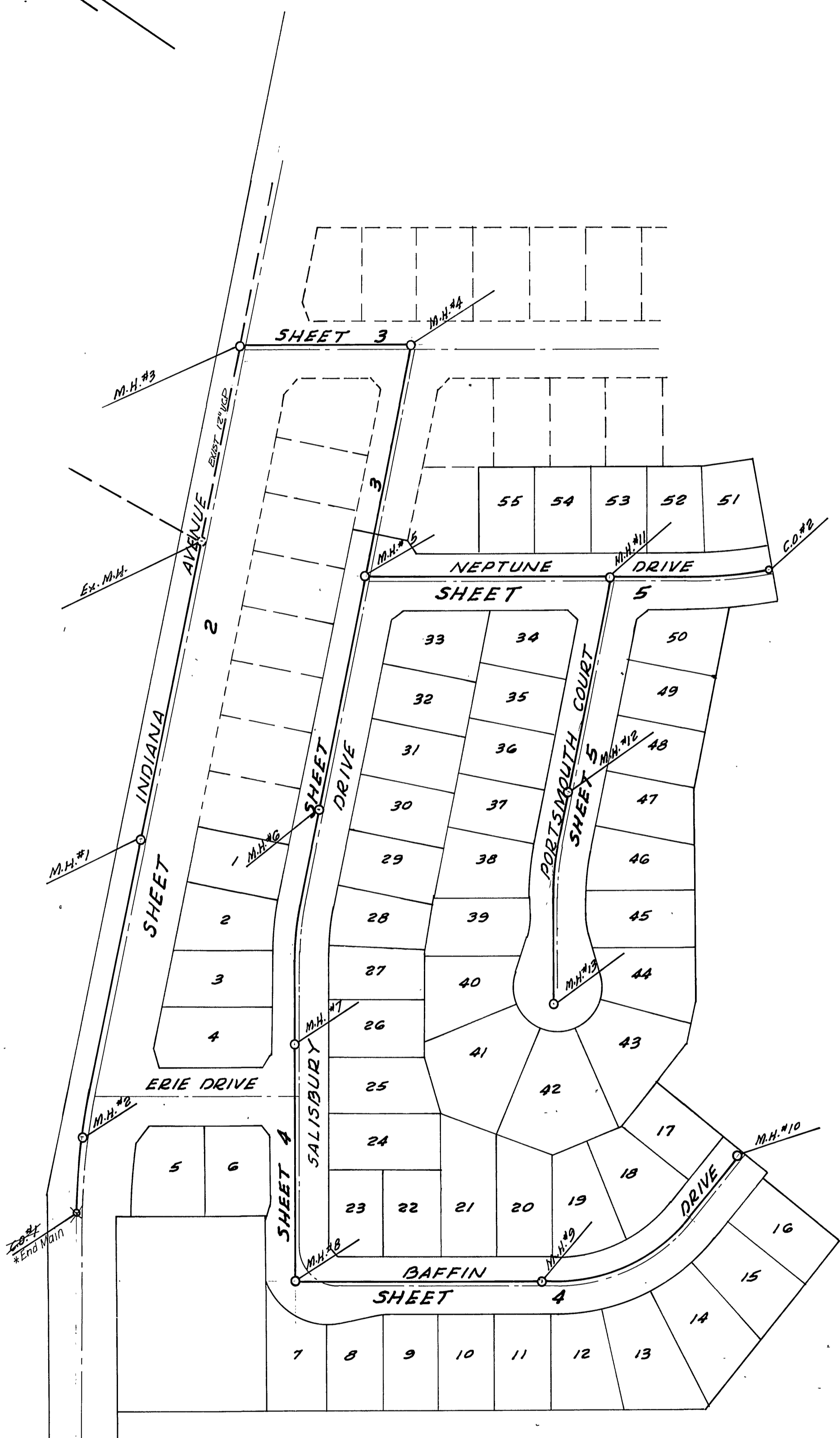
GENERAL NOTES

1. Construction shall be in accordance with the Standard Specifications for Public Works Construction, 1973 Edition, and the City of Riverside Standard Drawings.
2. It shall be the responsibility of the Contractor to clear the Right of Way in accordance with the provisions of law as it affects each utility including irrigation lines and appurtenances and at no cost to the City.
3. Pipe shall be bedded per Case I, Standard Drawing No. 452, unless otherwise specified on the plans.
4. Location of wyes and laterals to be determined in the field at the direction of the owner.
5. All stubs and laterals to be constructed in accordance with Standard Drawing No. 562. Stubs shall be plugged and copped.
6. Manhole frames and covers to be set as noted in profiles by sewer Contractor after final paving of streets.
7. Laterals are to be 4" V.C.P. and extended to property line.
8. Prior to construction of sewer, Contractor is to expose the existing sewer and contact the Engineer for verification of existing location and alteration.
9. Plugs shall be installed and will remain in place, where the new sewer connects with the existing sewer until such time as the new sewer is accepted by the City.
10. Encase sewer 4.5' each side of proposed water main crossings per Public Utilities Drawing CWD 023, Type C.

NOTICE TO CONTRACTOR

The existence and location of underground utility pipes or structures shown on these plans are obtained by a search of the available records. To the best of our knowledge, there are no existing utilities except as shown on these plans.

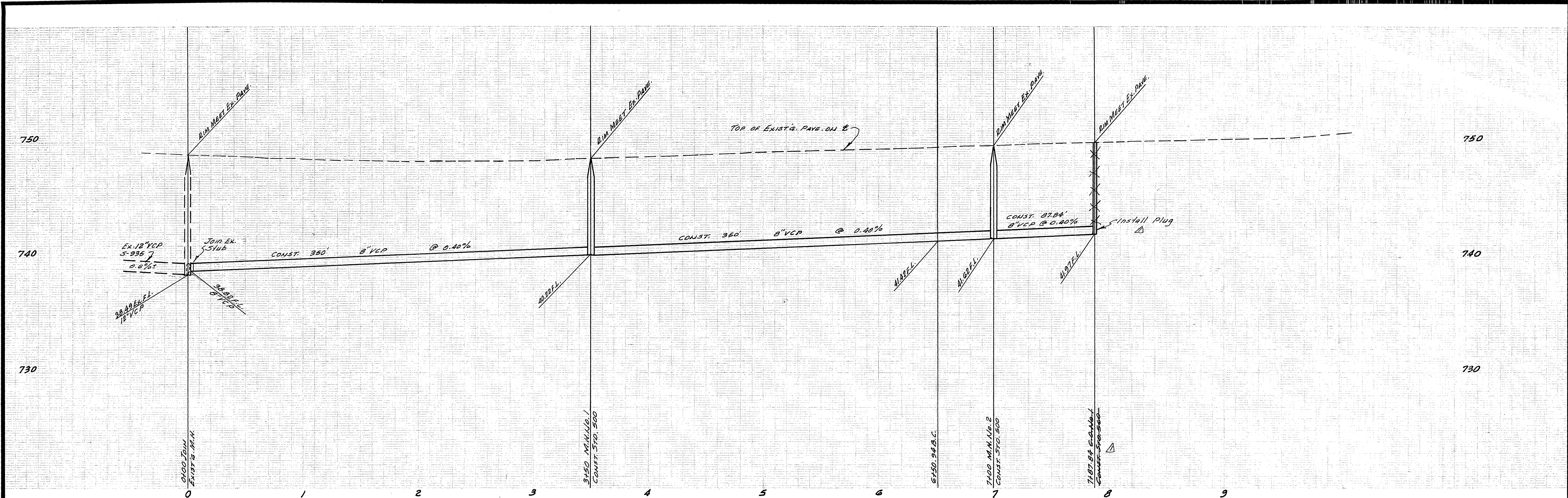
The Contractor is required to take due precautionary measures to protect the utility lines shown and any other lines not of record or not shown on these plans.



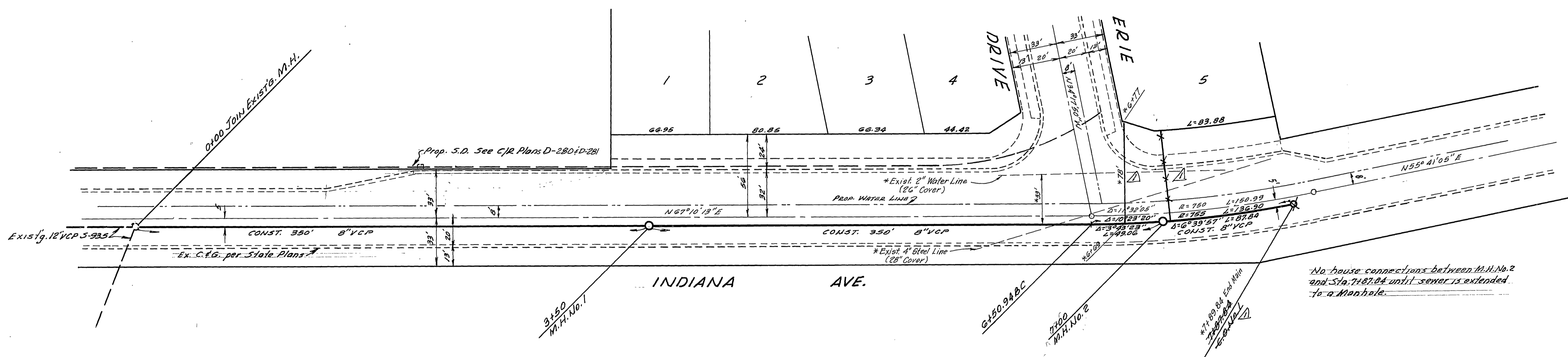
INDEX MAP
SCALE - 1"=100'

BENCH MARK ELEV. 756.665
Brass Disk set in concrete stamped
601-25-60 on west side of Tyler Street
250' North of Indiana Avenue and 1'
Northeast of bridge No. 50-419.

ALBERT A. WEBB ASSOCIATES CIVIL ENGINEERS RIVERSIDE, CALIFORNIA APPROVED BY: <i>[Signature]</i> DATE: 6/13/75 R.E. No. 3076	MARK: _____ REVISIONS: _____ APPR. DATE: _____ DESIGNED BY: REC. DRAWN BY: REC. CHECKED BY: [Signature]	Approved by: <i>[Signature]</i> 8-12-75 Chief Water Utility Engineer Date	CITY OF RIVERSIDE, CALIFORNIA PUBLIC WORKS DEPARTMENT APPROVED BY: <i>[Signature]</i> DATE: 8/20/75 PRINCIPAL ENGINEER PARK DEPARTMENT TRAFFIC DIVISION CHIEF PUB. WKS. ENGR.	SEWER PLAN AND PROFILE TRACT NO. 6070-1 INDEX MAP SCALE: AS NOTED	INDEXED R.R. ACCOUNT No. _____ DRAWING NUMBER S-100B SHEET 1 OF 5 75-98-B
		* As Built 12-75 KPT			



SEE SHEET 1 FOR GENERAL NOTES



No house connections between M.H. No. 2 and Sta. 7187.84 until sewer is extended to a Manhole.

BENCH MARK ELEV. 756.665
 Brass Disk set in concrete stamped 601-25-68 on west side of Tyler Street 250' North of Indiana Avenue and 1/2' Northeast of Bridge No. 52-418.

* As Built 12-75 KPT

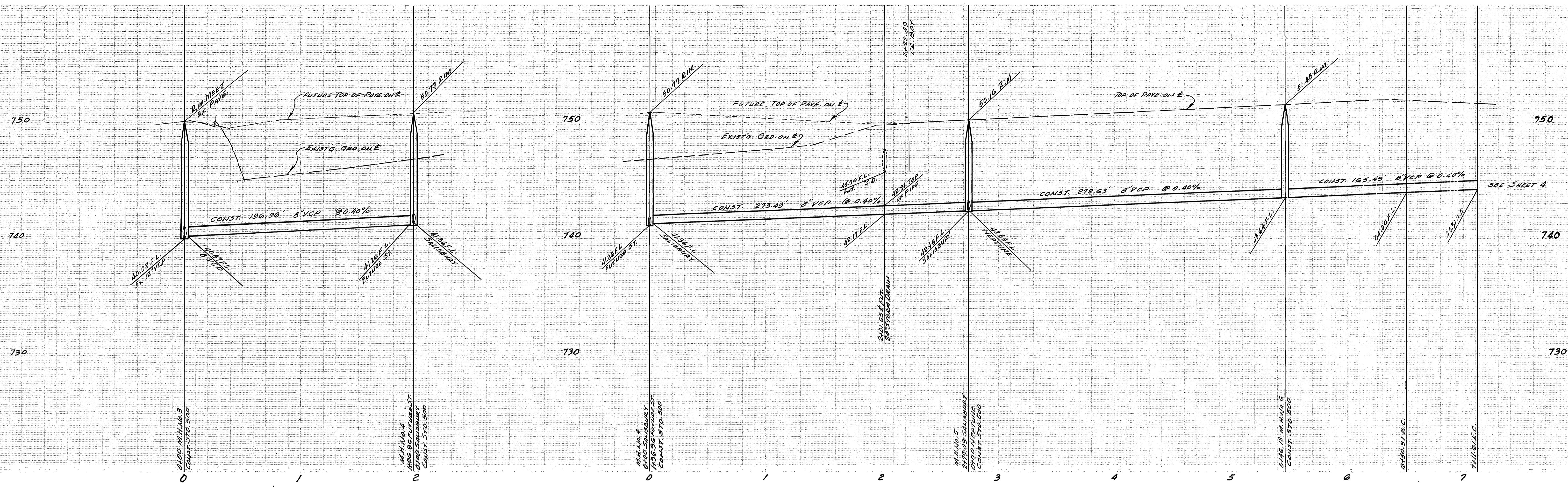
ALBERT A. WEBB ASSOCIATES
 CIVIL ENGINEERS
 RIVERSIDE, CALIFORNIA
 APPROVED BY: *[Signature]* DATE: 6/13/75
 R.E. No. 2872
 W.O. 75-98 FOR Pace Setter Homes Inc. F.B. 1037

MARK	REVISIONS	APPR.	DATE

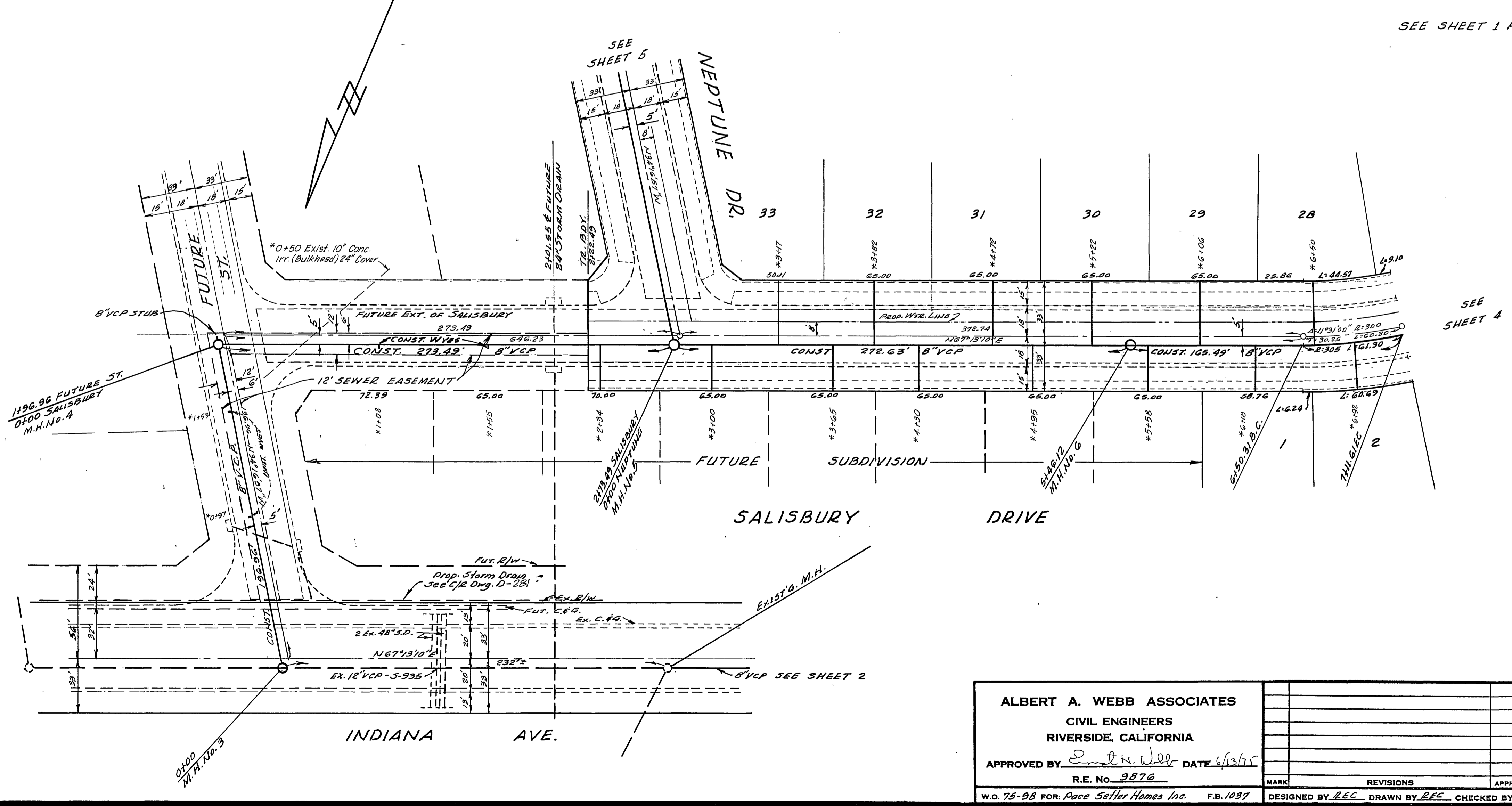
Approved by: *[Signature]* 8-18-75
 Chief Water Utility Engineer
 CITY OF RIVERSIDE, CALIFORNIA
 PUBLIC WORKS DEPARTMENT
 APPROVED BY: *[Signature]* DATE: 8/28/75
 PRINCIPAL ENGINEER
 PARK DEPARTMENT
 TRAFFIC DIVISION
 CHIEF PUB. WKS. ENGR.
 DIRECTOR OF PUBLIC WORKS

SEWER PLAN AND PROFILE
 TRACT NO. 6070-1
 INDIANA AVENUE
 SCALE: Horiz. 1"=40' Vert. 1"=4'

ACCOUNT No.
 DRAWING NUMBER
 5-100B
 SHEET 2 OF 5
 75-98-B



SEE SHEET 1 FOR GENERAL NOTES



SEE SHEET 4

BENCH MARK ELEV. 756.665
 Brass Disk set in concrete stamped
 601-25-68 on west side of Tyler Street
 250' North of Indiana Avenue and 1/2
 Northeast of Bridge No. 56-49.

* As Built 10-75 KPT

ALBERT A. WEBB ASSOCIATES
 CIVIL ENGINEERS
 RIVERSIDE, CALIFORNIA
 APPROVED BY: *[Signature]* DATE: 6/13/75
 R.E. No. 9876

MARK	REVISIONS	APPR. DATE

Approved by: *[Signature]* R-18-TS
 Chief Water Utility Engineer
 CITY OF RIVERSIDE, CALIFORNIA
 PUBLIC WORKS DEPARTMENT
 APPROVED BY: *[Signature]* DATE: 8/28/75
 PARK DEPARTMENT
 TRAFFIC DIVISION
 CHIEF PUB. WKS. ENGR.

SEWER PLAN AND PROFILE
 TRACT NO. 6070-1
 EASEMENT AND
 SALISBURY DRIVE

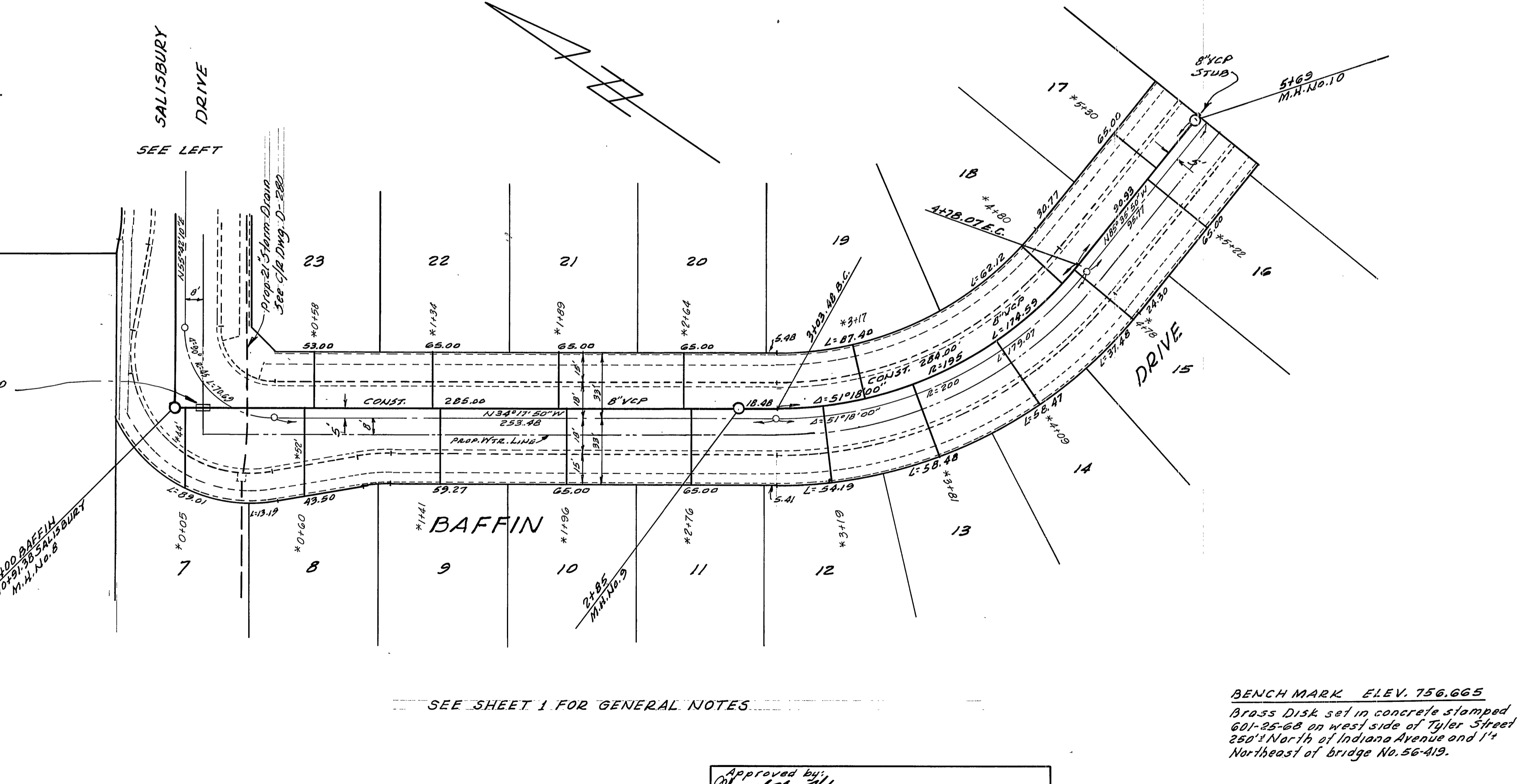
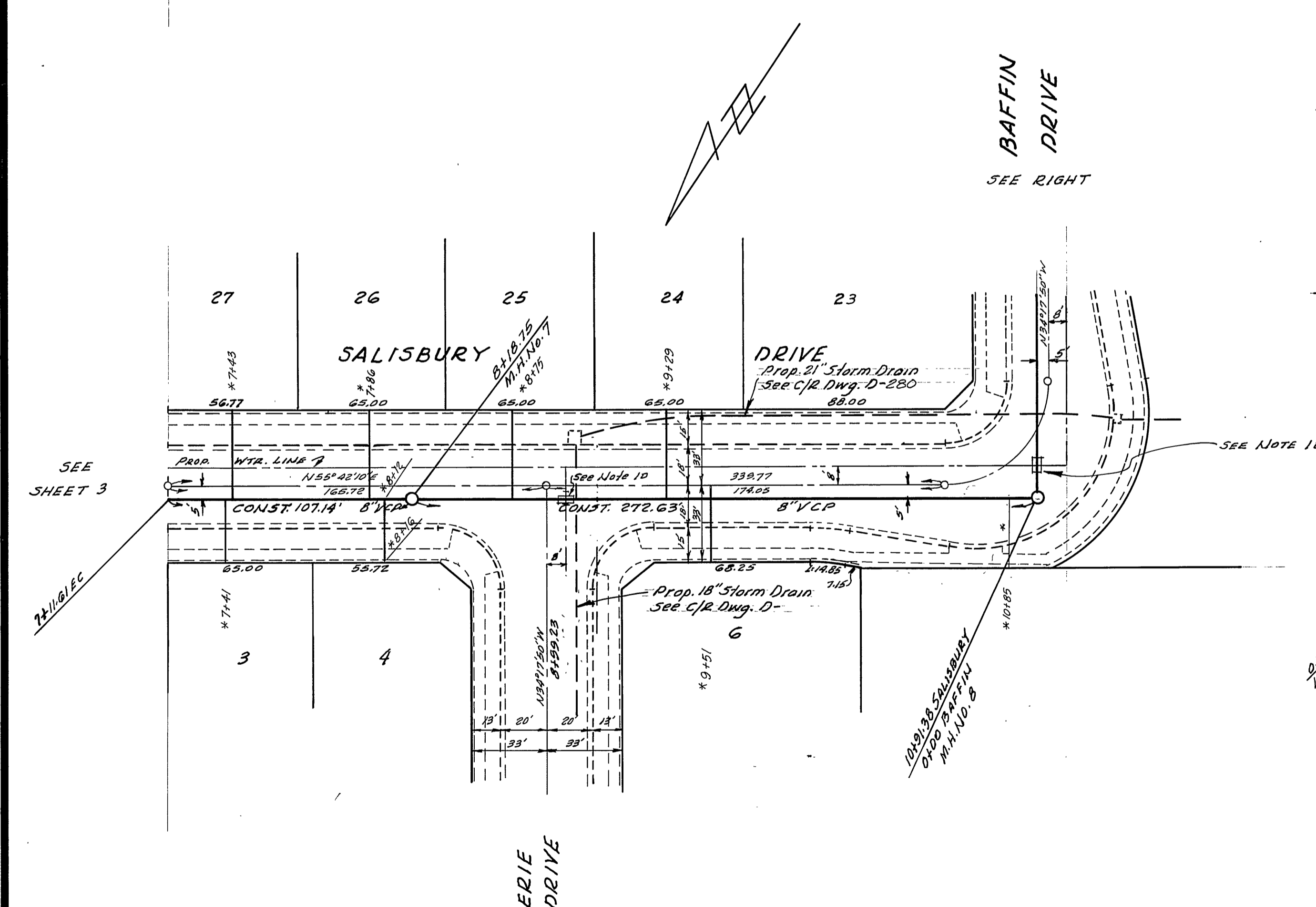
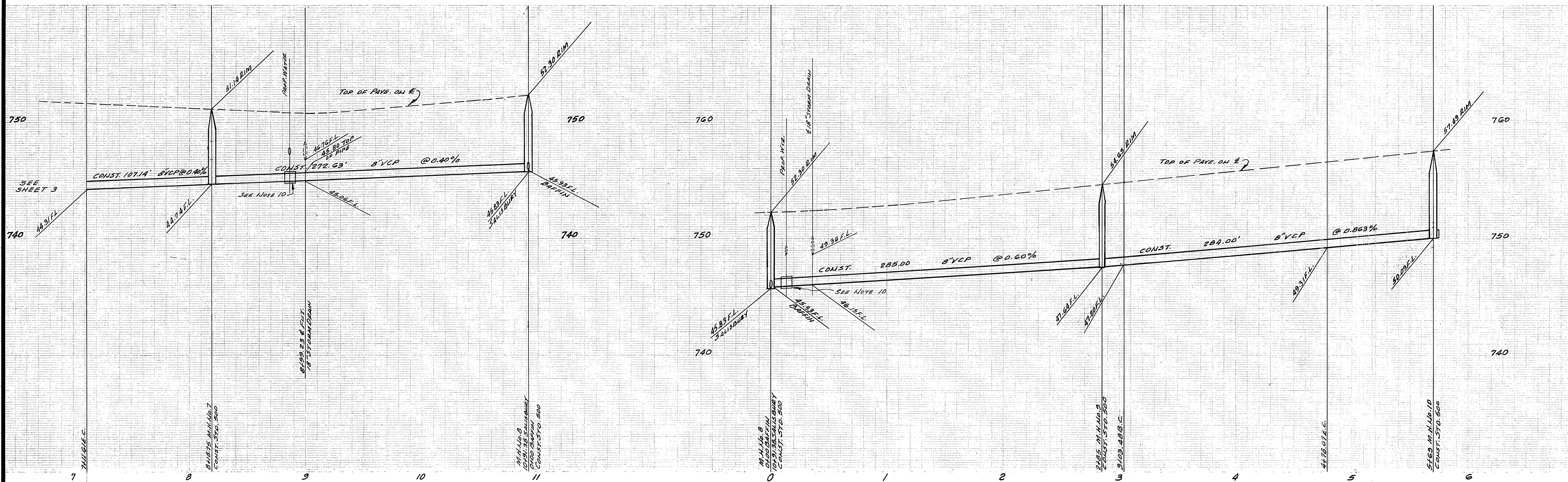
ACCOUNT No.
 DRAWING NUMBER
S-100B
 SHEET 3 OF 5
 75-98-B

SCALE: Horiz. 1"=40' Vert. 1"=4'

W.O. 75-98 FOR: *Pace Setter Homes Inc.* F.B. 1037

DESIGNED BY: REC. DRAWN BY: REC. CHECKED BY: *[Signature]*

DATE: 8/28/75



SEE SHEET 1 FOR GENERAL NOTES

BENCH MARK ELEV. 756.665
 Brass Disk set in concrete stamped
 601-25-68 on west side of Tyler Street
 250' North of Indiana Avenue and 1/4
 Northeast of bridge No. 56-419.

ALBERT A. WEBB ASSOCIATES
 CIVIL ENGINEERS
 RIVERSIDE, CALIFORNIA
 APPROVED BY: *[Signature]* DATE: 6/3/75
 R.E. No. 3876

MARK	REVISIONS	APPR.	DATE

APPROVED BY: *[Signature]* DATE: 8-18-75
 Chief Water Utility Engineer

CITY OF RIVERSIDE, CALIFORNIA
 PUBLIC WORKS DEPARTMENT
 APPROVED BY: *[Signature]* DATE: 8/28/75
 PRINCIPAL ENGINEER
 PARK DEPARTMENT
 TRAFFIC DIVISION
 CHIEF PUB. WKS. ENGR.

SEWER PLAN AND PROFILE
 TRACT NO. 6070-1
 SALISBURY DRIVE
 BAFFIN DRIVE
 SCALE: Horiz. 1" = 40' Vert. 1" = 4'

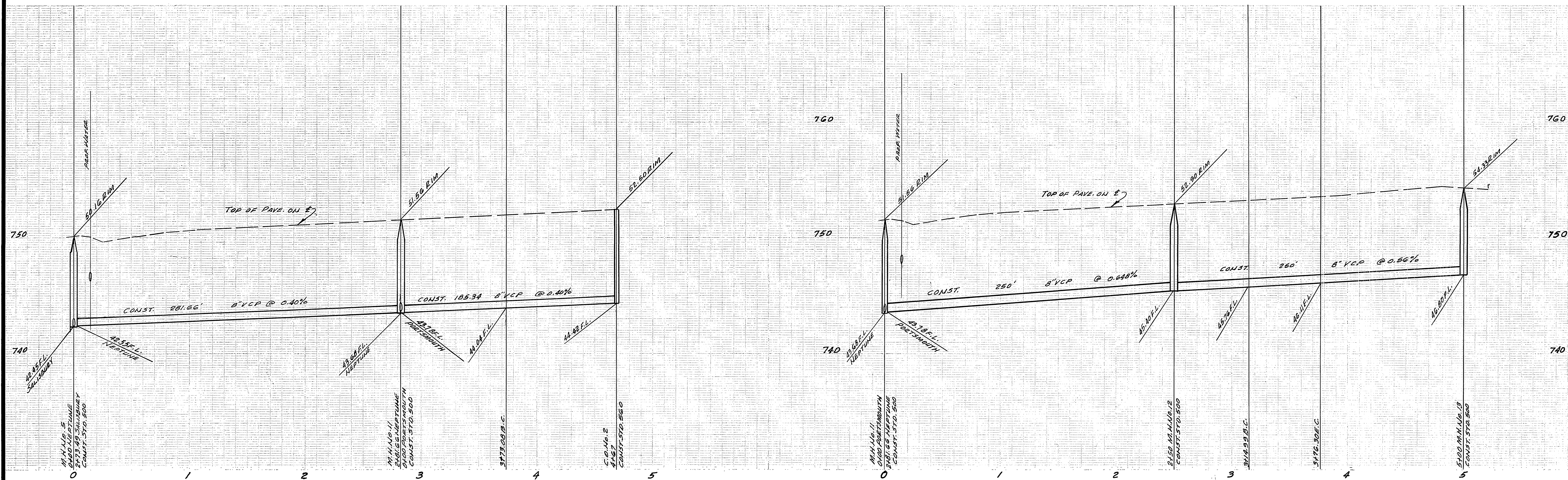
ACCOUNT No.
 DRAWING NUMBER
 S-1008
 SHEET 4 OF 5
 75-98-B

W.O. 75-28 FOR Pace Setter Homes Inc. F.B. 1037

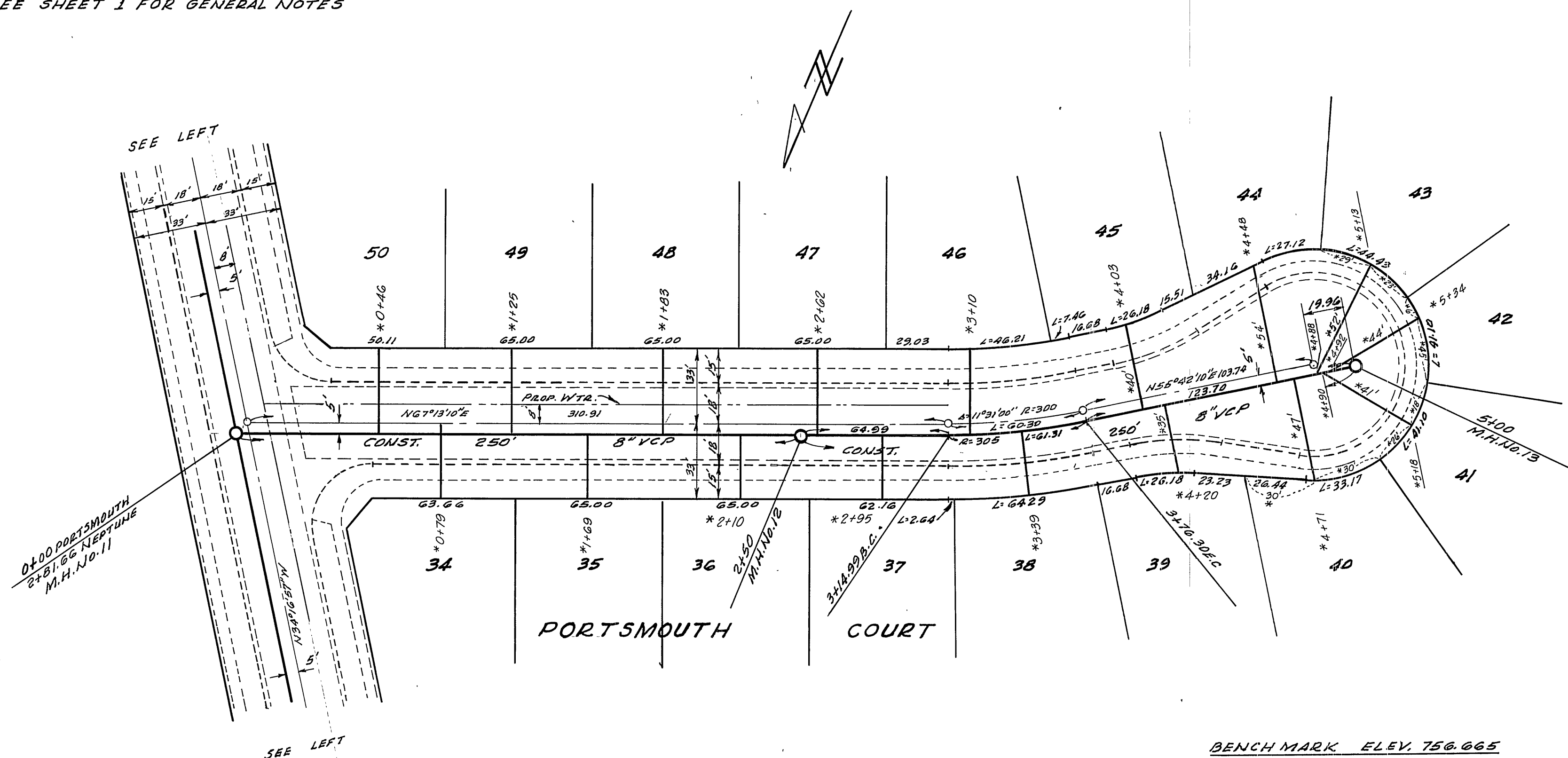
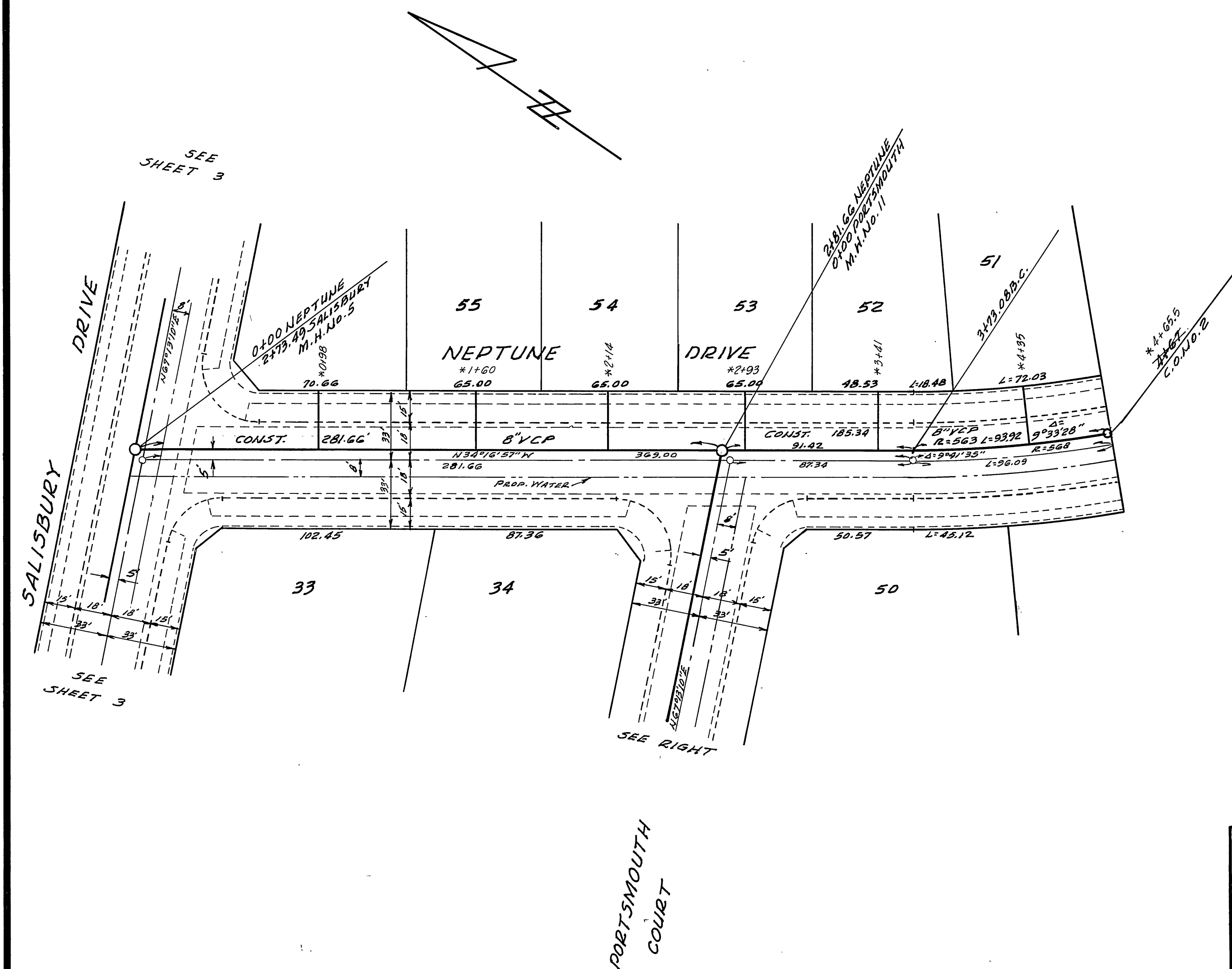
DESIGNED BY REC DRAWN BY REC CHECKED BY *[Signature]*

DATE: 8/28/75

* As Built 12-75 KPT



SEE SHEET 1 FOR GENERAL NOTES



BENCH MARK ELEV. 756.665
 Brass Disk set in concrete stamped
 601-25-68 on west side of Taylor Street
 250' North of Indiana Avenue and 1'
 Northeast of bridge No. 56-413.

* As Built 12-79 KPT

ALBERT A. WEBB ASSOCIATES
 CIVIL ENGINEERS
 RIVERSIDE, CALIFORNIA
 APPROVED BY: *[Signature]* DATE: 6/13/75
 R.E. No. 9276

MARK	REVISIONS	APPR.	DATE

Approved by: *[Signature]* Chief Utility Engineer 8-18-75
 DATE
 CITY OF RIVERSIDE, CALIFORNIA
 PUBLIC WORKS DEPARTMENT
 APPROVED BY: *[Signature]* DIRECTOR OF PUBLIC WORKS
 DATE: 8/28/75

SEWER PLAN AND PROFILE
 TRACT NO. 6070-1
 NEPTUNE DRIVE
 PORTSMOUTH COURT
 SCALE: HORIZ. 1"=40' VERT. 1"=4'

ACCOUNT NO.
 DRAWING NUMBER
 S-100B
 SHEET 5 OF 5
 75-98-B

W.O. 75-98 FOR: Pace Setter Homes Inc. F.B. 1037

DESIGNED BY: REC. DRAWN BY: REC. CHECKED BY: [Signature]