

GENERAL NOTES

1. CONSTRUCTION SHALL BE IN ACCORDANCE WITH THE STANDARD SPECIFICATIONS FOR PUBLIC WORKS CONSTRUCTION, 1973 EDITION, AND THE CITY OF RIVERSIDE STANDARD DRAWINGS.
2. IT SHALL BE THE RESPONSIBILITY OF THE CONTRACTOR TO CLEAR THE RIGHT OF WAY IN ACCORDANCE WITH THE PROVISIONS OF THE LAW AS IT AFFECTS EACH UTILITY INCLUDING IRRIGATION LINES AND APPURTENANCES AND AT NO COST TO THE CITY.
3. PIPES SHALL BE BEDDED PER STANDARD DRAWING NO. 452, CASE I, EXCEPT WHERE SHOWN DIFFERENT ON THE PLANS.
4. A PLUG SHALL BE INSTALLED AND WILL REMAIN IN PLACE WHERE THE NEW SEWER CONNECTS WITH THE EXISTING SEWER UNTIL SUCH TIME AS THE NEW SEWER IS ACCEPTED BY THE CITY.
5. PRIOR TO CONSTRUCTION OF SEWER, CONTRACTOR IS TO EXPOSE THE EXISTING SEWER AND CONTACT THE ENGINEER FOR VERIFICATION OF EXISTING LOCATION AND ELEVATION.
6. MANHOLE FRAMES AND COVERS TO BE SET AS NOTED IN THE PROFILE, AFTER FINAL STREET PAVING, BY THE SEWER CONTRACTOR.
7. ALL STUBS AND LATERALS TO BE INSTALLED PER STANDARD DRAWING NO. 562, TO BE 4" AND EXTEND TO THE PROPERTY LINE. LATERALS ON COCHRAN WHERE SHOWN BY ARE TO BE INSTALLED AT 1% PER FOOT SLOPE WITH THE LINES LAID FLAT. WHERE THESE COCHRAN AVE. LATERALS CROSS THE PROPOSED 14" IRRIGATION MAIN THE CONTRACTOR WILL INSTALL A CAST IRON LATERAL OR ENCASE WITH TYPE "B" CONCRETE 4" EACH SIDE OF THE PROPOSED 14" WATER LINE PER PUBLIC UTILITIES STANDARD DRAWING CWD-023.
8. LOCATION OF THE LATERALS TO BE DETERMINED IN THE FIELD AT THE DIRECTION OF THE OWNER.

NOTICE TO CONTRACTOR

THE EXISTENCE AND LOCATION OF UNDERGROUND UTILITIES, PIPES OR STRUCTURES SHOWN ON THESE PLANS WERE OBTAINED BY A SEARCH OF THE AVAILABLE RECORDS. TO THE BEST OF OUR KNOWLEDGE, THERE ARE NO EXISTING UTILITIES EXCEPT AS SHOWN ON THESE PLANS.

THE CONTRACTOR IS REQUIRED TO TAKE DUE PRECAUTIONARY MEASURES TO PROTECT THE UTILITY LINES SHOWN AND ANY OTHER LINES NOT OF RECORD OR NOT SHOWN ON THESE PLANS.

INDEX MAP
SCALE 1"=80'

*As Built 12-75 KPT

PUBLIC UTILITIES DEPARTMENT
APPROVED BY *Walter Hahn* DATE 8-27-75
CHIEF WATER UTILITIES ENGINEER

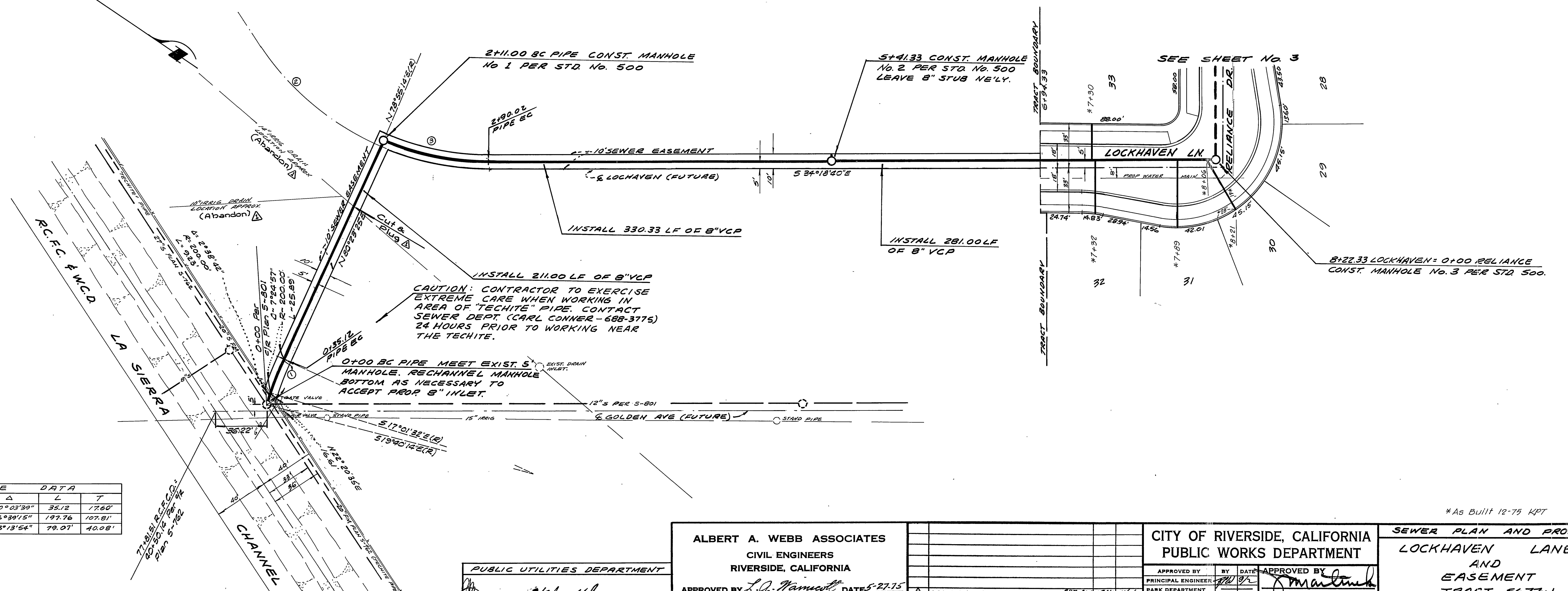
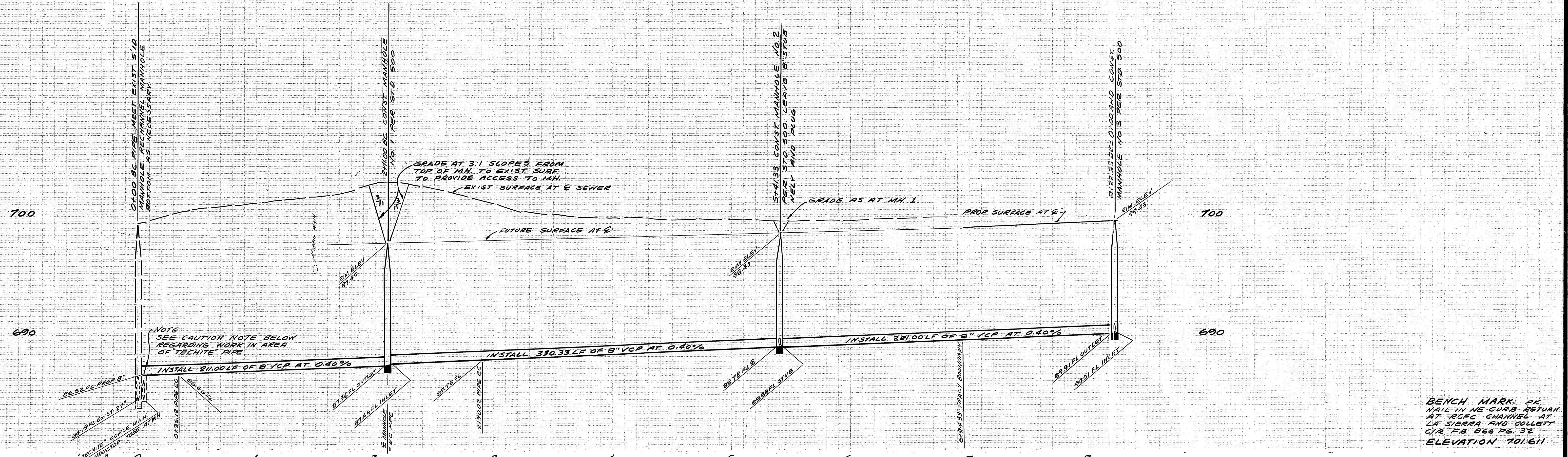
ALBERT A. WEBB ASSOCIATES
CIVIL ENGINEERS
RIVERSIDE, CALIFORNIA
APPROVED BY *L.A. Wainwright* DATES 5-27-75
R.E. No. 16056
W.O. 75-107 FOR MARLBOROUGH DEV. CO. F.B. 1032

| | | |
|-----------------------|--------------------|-----------------------|
| MARK | REVISIONS | APPR. DATE |
| | | |
| | | |
| DESIGNED BY <i>EE</i> | DRAWN BY <i>EE</i> | CHECKED BY <i>BBM</i> |

CITY OF RIVERSIDE, CALIFORNIA
PUBLIC WORKS DEPARTMENT
APPROVED BY *[Signature]* DATE *9/1/75*
PRINCIPAL ENGINEER
PARK DEPARTMENT
TRAFFIC DIVISION
CHIEF PUB. WKS. ENGR.
DATE *9/1/75*

SEWER PLAN AND PROFILE
INDEX MAP
TRACT 5677-1
SCALE: HORIZ. 1"=40', VERT 1"=4'

ACCOUNT No. 75-107
DRAWING NUMBER
S-1009
SHEET 1 OF 6
75-107-B



| Sta | R | Δ | L | T |
|-----|--------|-----------|--------|---------|
| 1 | 200.00 | 10°03'39" | 35.12 | 17.60' |
| 2 | 200.00 | 56°30'15" | 197.76 | 107.81' |
| 3 | 195.00 | 23°18'54" | 79.07 | 40.08' |

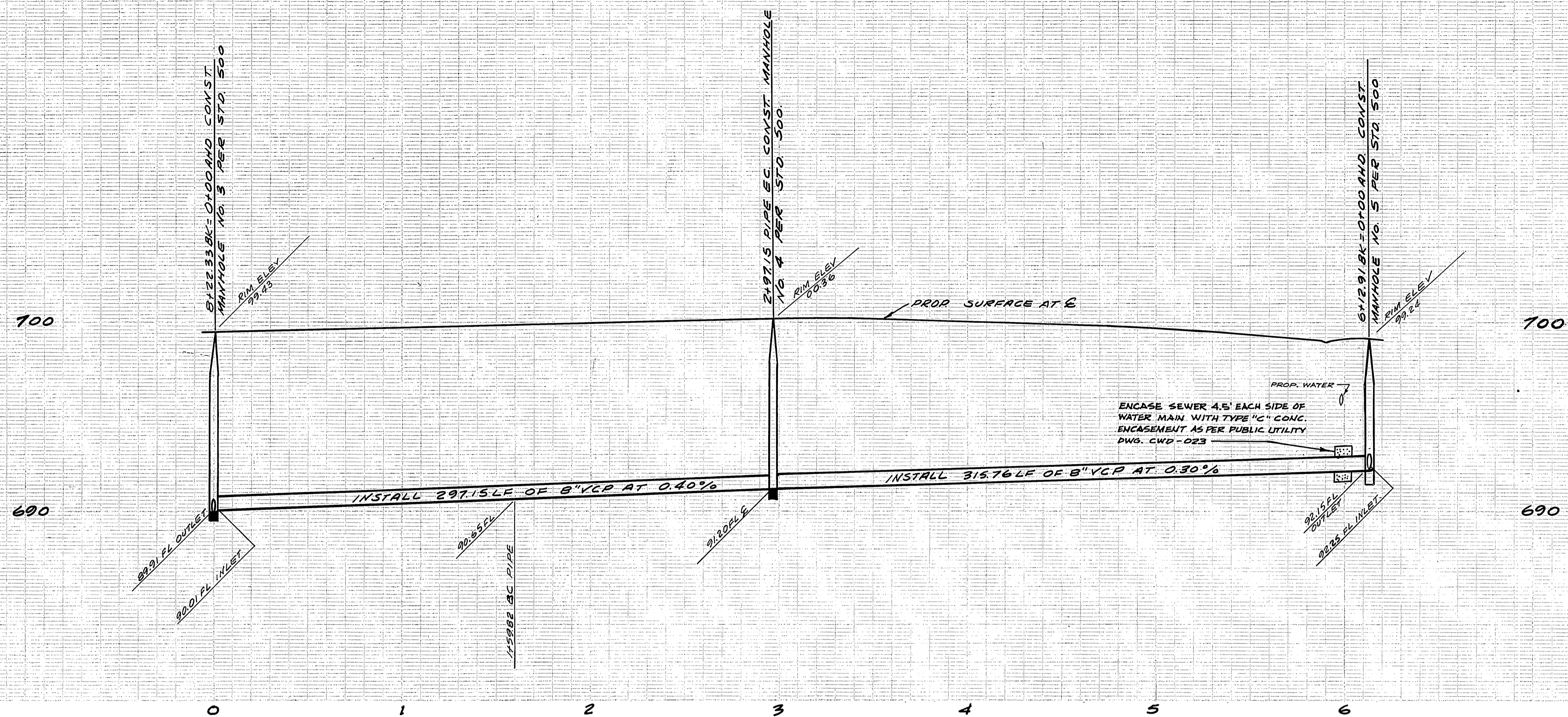
PUBLIC UTILITIES DEPARTMENT
 APPROVED BY *Walter Taylor* DATE 8-27-75
 CHIEF WATER UTILITIES ENGINEER

ALBERT A. WEBB ASSOCIATES
 CIVIL ENGINEERS
 RIVERSIDE, CALIFORNIA
 APPROVED BY *L.O. Hammett* DATE 8-27-75
 R.E. No. 16058

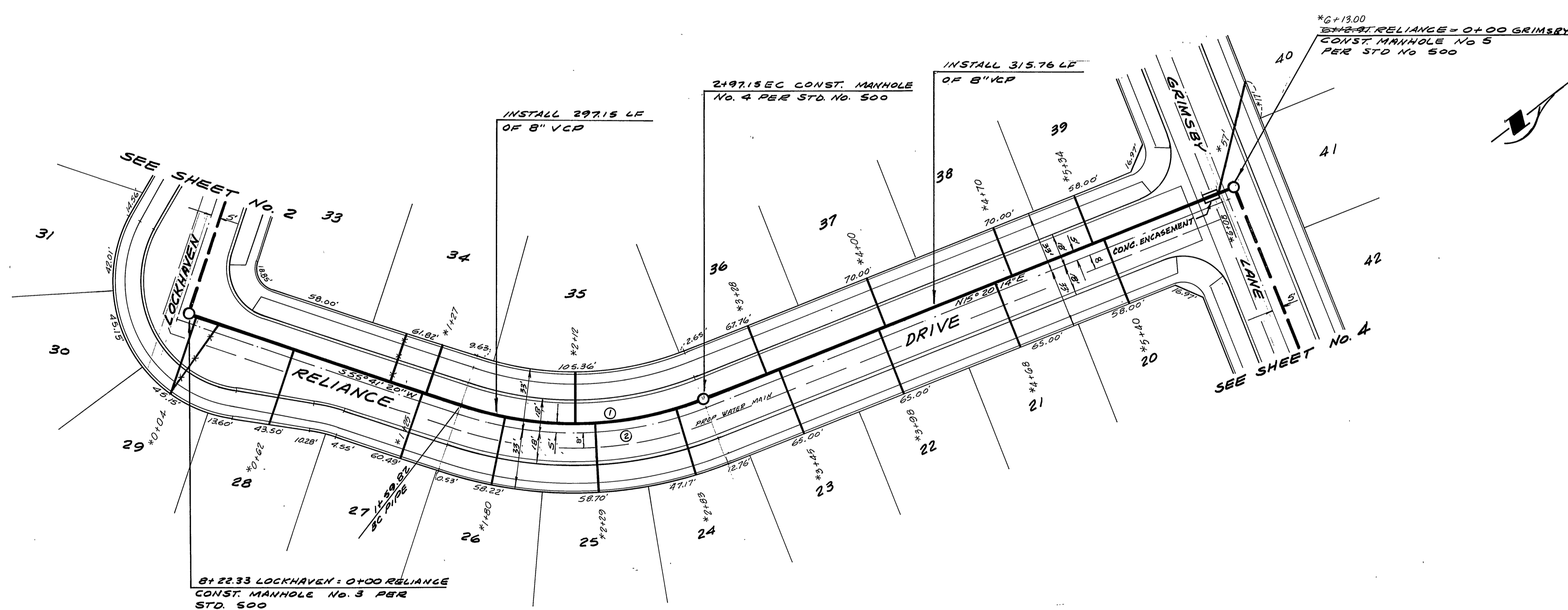
W.D. 75-107 FOR: MARLBOROUGH DEV. CO. F.B. 1032
 DESIGNED BY *BE* DRAWN BY *BE* CHECKED BY *BDM*

CITY OF RIVERSIDE, CALIFORNIA
 PUBLIC WORKS DEPARTMENT
 APPROVED BY *[Signature]* DATE 9-12-75
 PRINCIPAL ENGINEER
 PARK DEPARTMENT
 TRAFFIC DIVISION
 CHIEF PUB. WKS. ENGR.

SEWER PLAN AND PROFILE
 LOCKHAVEN LANE AND EASEMENT TRACT 5677-1
 ACCOUNT No. 75-107
 DRAWING NUMBER
S-1009
 SHEET 2 OF 6
 75-107-B
 SCALE: HORIZ. 1"=40', VERT. 1"=4'



BENCH MARK: ON
 1942 IN NE CURB RETURN
 AT RCFR CHANNEL AT
 LA SIERRA AND COLLETT
 C/R FB 866 PG. 32
 ELEVATION 701.611



| NO | R | Δ | L | T |
|----|---------|-----------|---------|--------|
| 1 | 195.00' | 40°21'06" | 137.33' | 71.65' |
| 2 | 200.00' | 40°21'06" | 140.85' | 78.49' |

PUBLIC UTILITIES DEPARTMENT
 APPROVED BY: *[Signature]* DATE: 8-27-70
 CHIEF WATER UTILITIES ENGINEER

ALBERT A. WEBB ASSOCIATES
 CIVIL ENGINEERS
 RIVERSIDE, CALIFORNIA
 APPROVED BY: *[Signature]* DATE: 5-27-75
 R.E. No. 16056

MARK REVISIONS
 APPR. DATE
 DESIGNED BY: *[Signature]* DRAWN BY: *[Signature]* CHECKED BY: *[Signature]*

CITY OF RIVERSIDE, CALIFORNIA
 PUBLIC WORKS DEPARTMENT
 APPROVED BY: *[Signature]* DATE: 9-12-75
 PRINCIPAL ENGINEER
 PARK DEPARTMENT
 TRAFFIC DIVISION
 CHIEF PUB. WKS. ENGR.

SEWER PLAN AND PROFILE
 RELIANCE DRIVE
 TRACT 5677-1
 SCALE: HORIZ. 1"=40', VERT. 1"=4'

ACCOUNT No. 75-107
 DRAWING NUMBER
S-1009
 SHEET 3 OF 6
 75-107-B

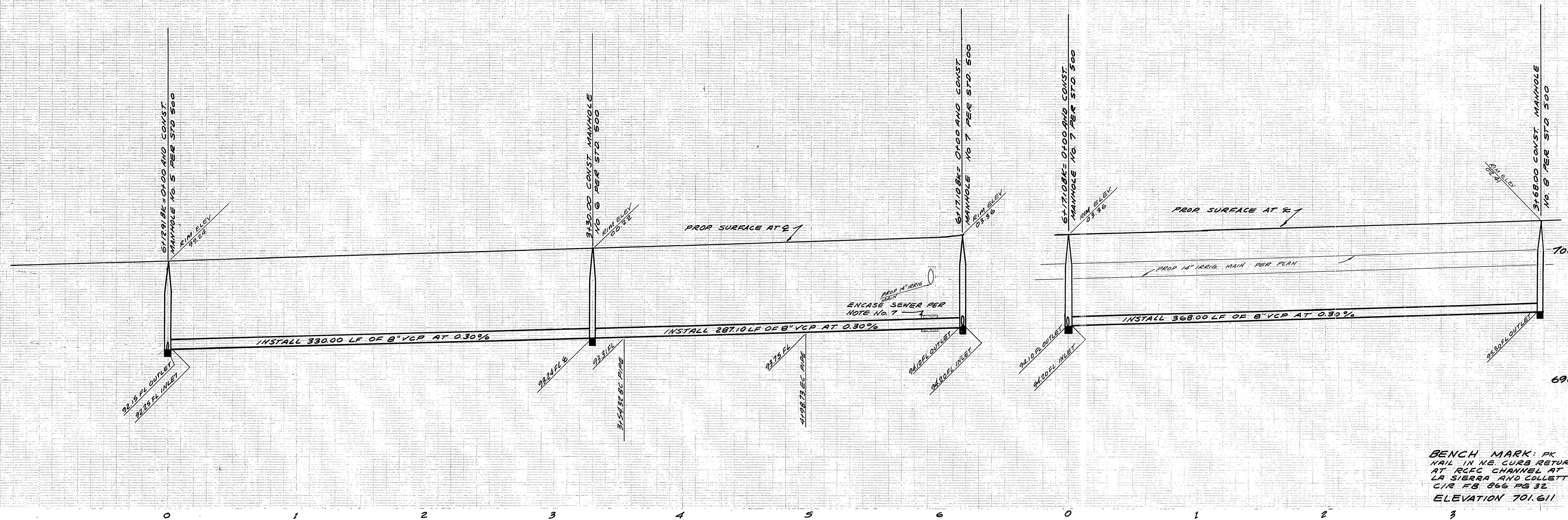
* As Built 12-75 KPT

700

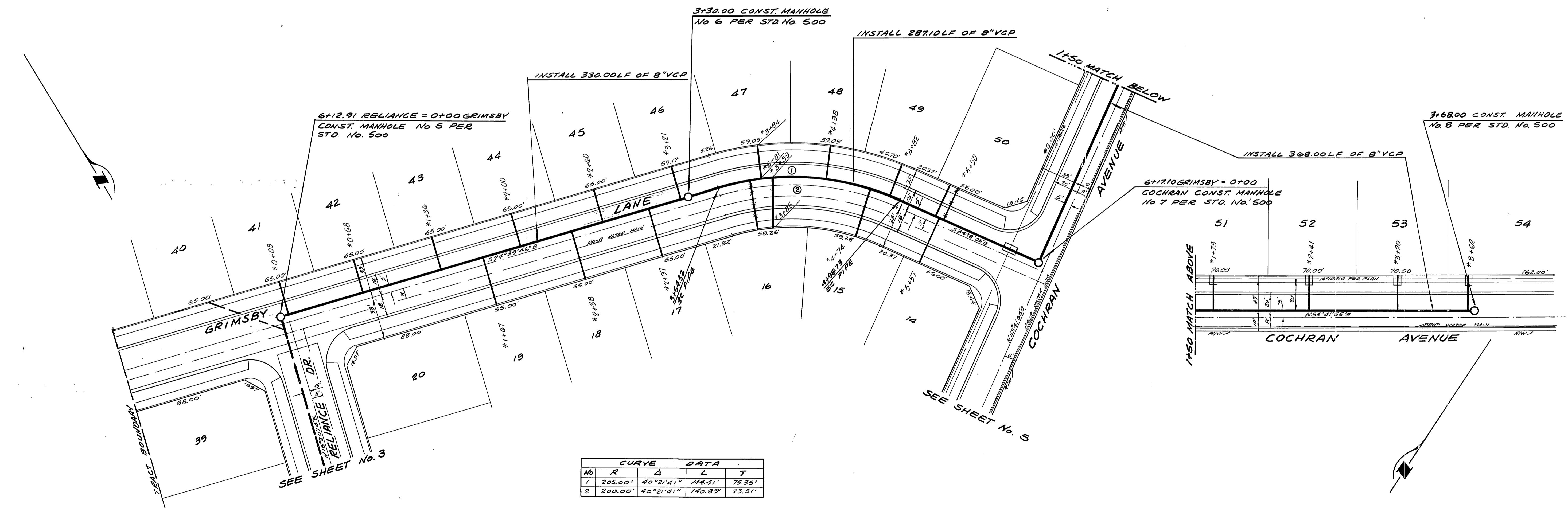
690

700

690



BENCH MARK: PK
 NAIL IN NE CURB RETURN
 AT R/CFC CHANNEL AT
 LA SIERRA AND COLLETT
 C/R F.B. 866 PG. 32
 ELEVATION 701.611



| CURVE DATA | | | | |
|------------|---------|-----------|---------|--------|
| NO | R | Δ | L | T |
| 1 | 205.00' | 40°21'41" | 144.41' | 76.36' |
| 2 | 200.00' | 40°21'41" | 140.89' | 73.51' |

PUBLIC UTILITIES DEPARTMENT
 APPROVED BY *Walter H. H.* DATED 8-27-75
 CHIEF WATER UTILITIES ENGINEER

ALBERT A. WEBB ASSOCIATES
 CIVIL ENGINEERS
 RIVERSIDE, CALIFORNIA
 APPROVED BY *L.R. Wainwright* DATED 8-27-75
 R.E. No. 16056
 W.D. 75-107 FOR: MARLBOROUGH DEV. CO. F.B. 1032

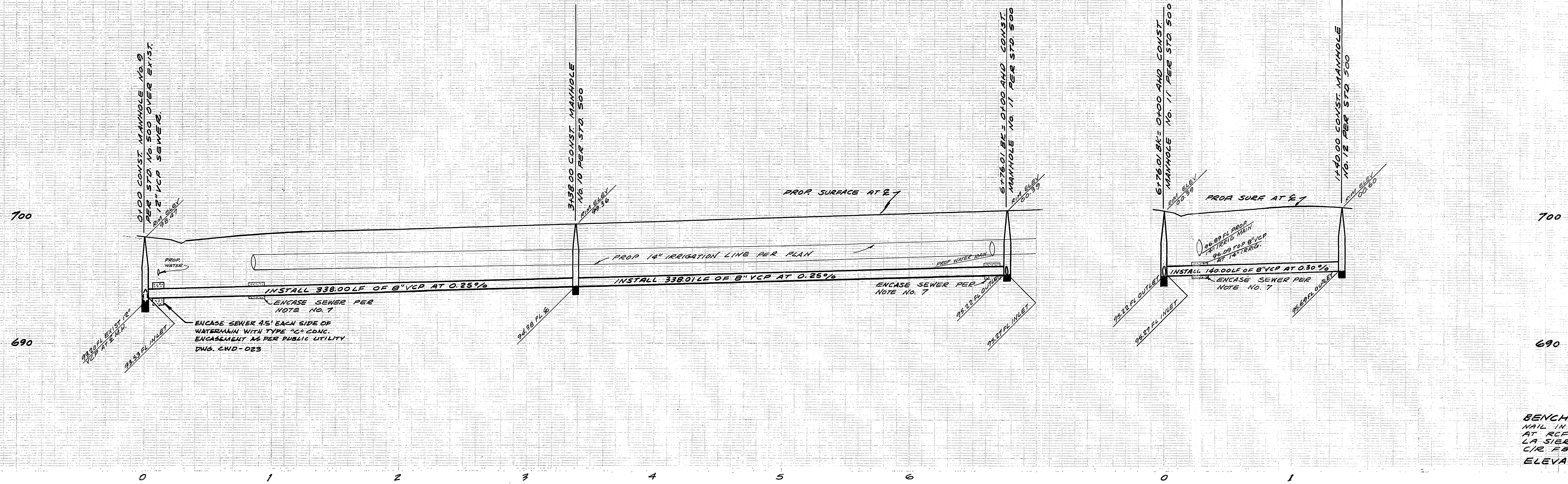
| MARK | REVISIONS | APPR. DATE |
|------|-----------|------------|
| | | |
| | | |
| | | |

CITY OF RIVERSIDE, CALIFORNIA
 PUBLIC WORKS DEPARTMENT
 APPROVED BY *[Signature]* DATE 9-12-75
 PRINCIPAL ENGINEER
 PARK DEPARTMENT
 TRAFFIC DIVISION
 CHIEF PUB. WKS. ENGR.

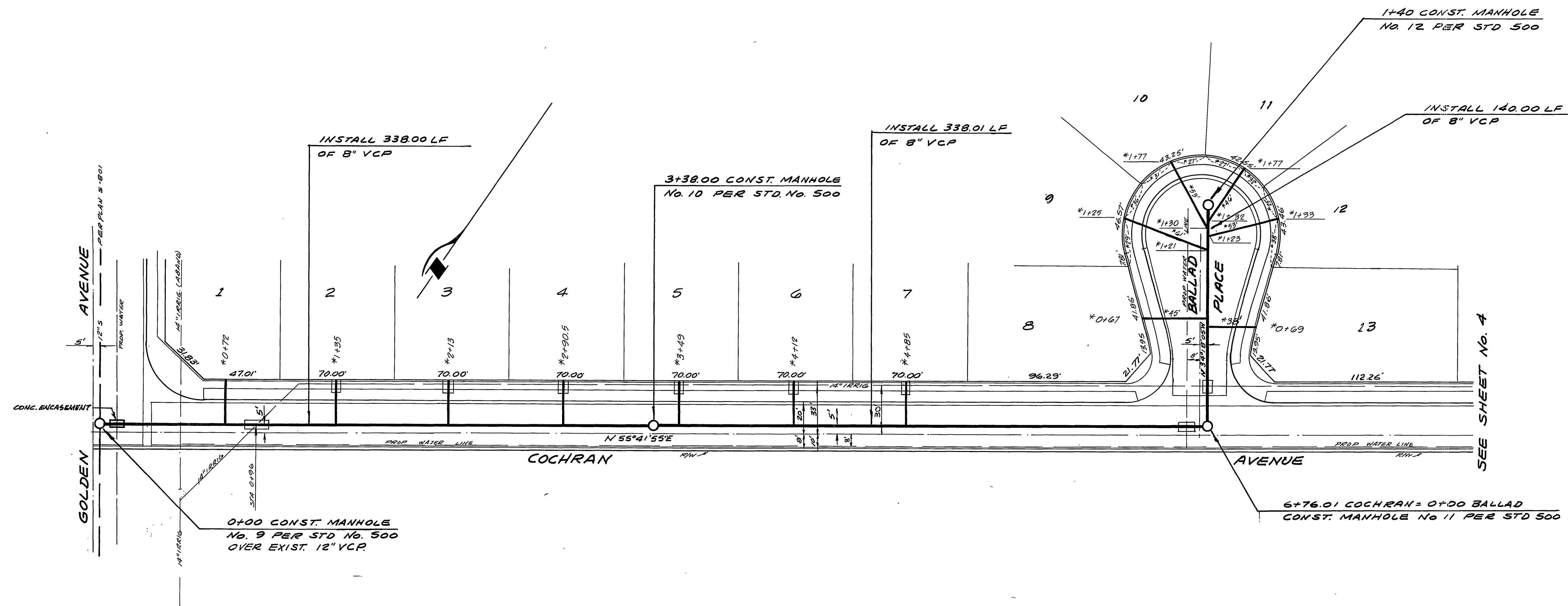
SEWER PLAN AND PROFILE
 GRIMSBY LANE
 AND
 COCHRAN AVENUE
 TRACT 5677-1
 SCALE: HORIZ. 1"=40', VERT. 1"=4'

ACCOUNT No. 75-107
 DRAWING NUMBER
S-1009
 SHEET 4 OF 6
 75-107-B

* As Built 12-75 KPT



BENCH MARK: PK
NAIL IN NE CURB RETURN
AT RCFE CHANNEL AT
LA SIERRA AND COLLETT
C/R. P.B. 866 PG. 32
ELEVATION 701.611



* As Built 12-75 KPT

PUBLIC UTILITIES DEPARTMENT
APPROVED BY *[Signature]* DATE 8-27-75
CHIEF WATER UTILITIES ENGINEER

ALBERT A. WEBB ASSOCIATES
CIVIL ENGINEERS
RIVERSIDE, CALIFORNIA
APPROVED BY *[Signature]* DATE 5-27-75
R.E. No. 16056

| MARK | REVISIONS | APPR. | DATE |
|------|-----------|-------|------|
| | | | |
| | | | |
| | | | |

CITY OF RIVERSIDE, CALIFORNIA
PUBLIC WORKS DEPARTMENT
APPROVED BY *[Signature]* DATE 9-12-75
PRINCIPAL ENGINEER
TRAFFIC DIVISION
CHIEF PUB. WKS. ENGR.

SEWER PLAN AND PROFILE
COCHRAN AVENUE
AND
BALLAD PLACE
TRACT 5677-1
SCALE: HORIZ. 1"=40', VERT 1"=4'

ACCOUNT No. 75-107
DRAWING NUMBER
S-1009
SHEET 5 OF 6
75-107-B

710

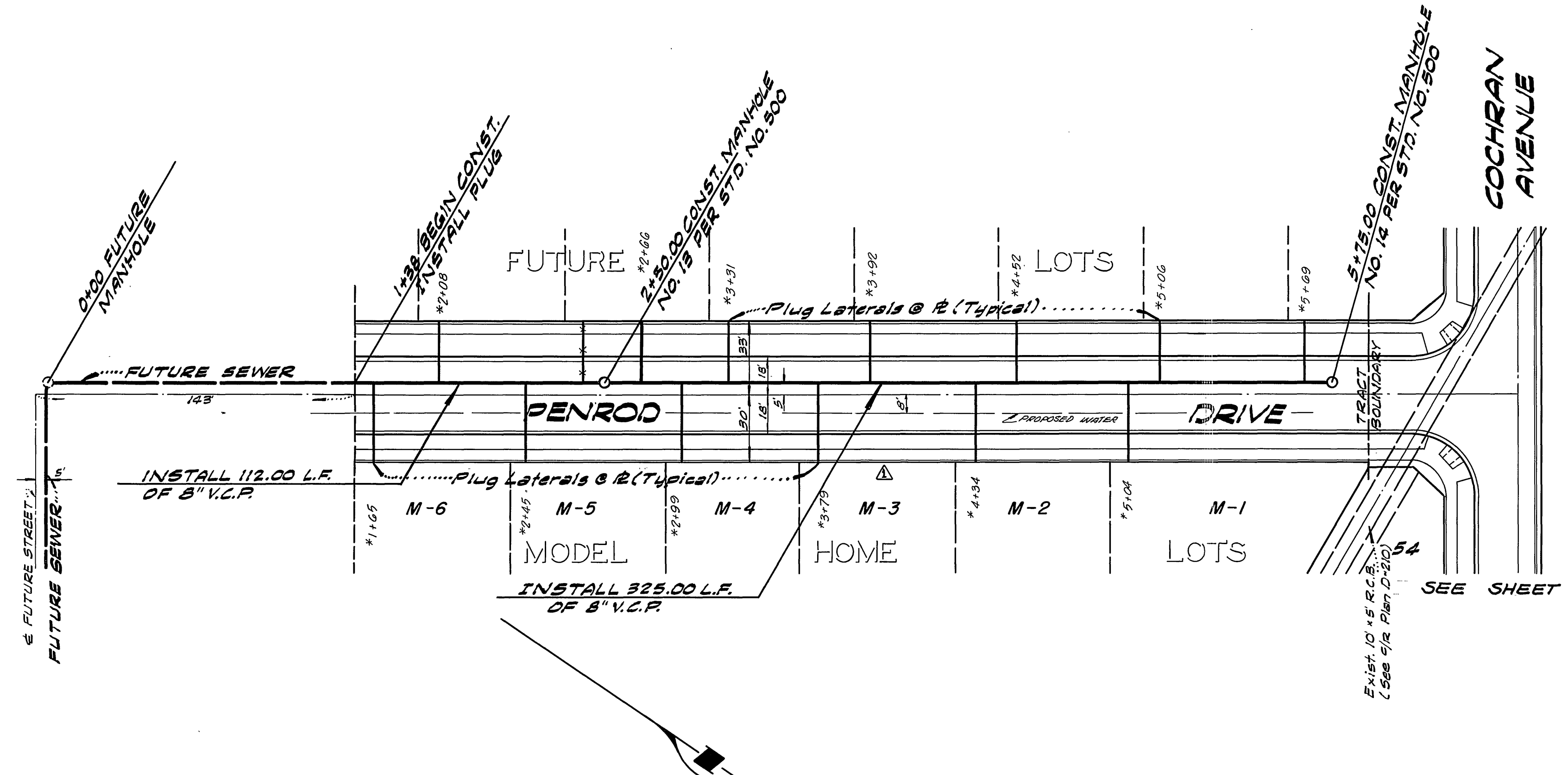
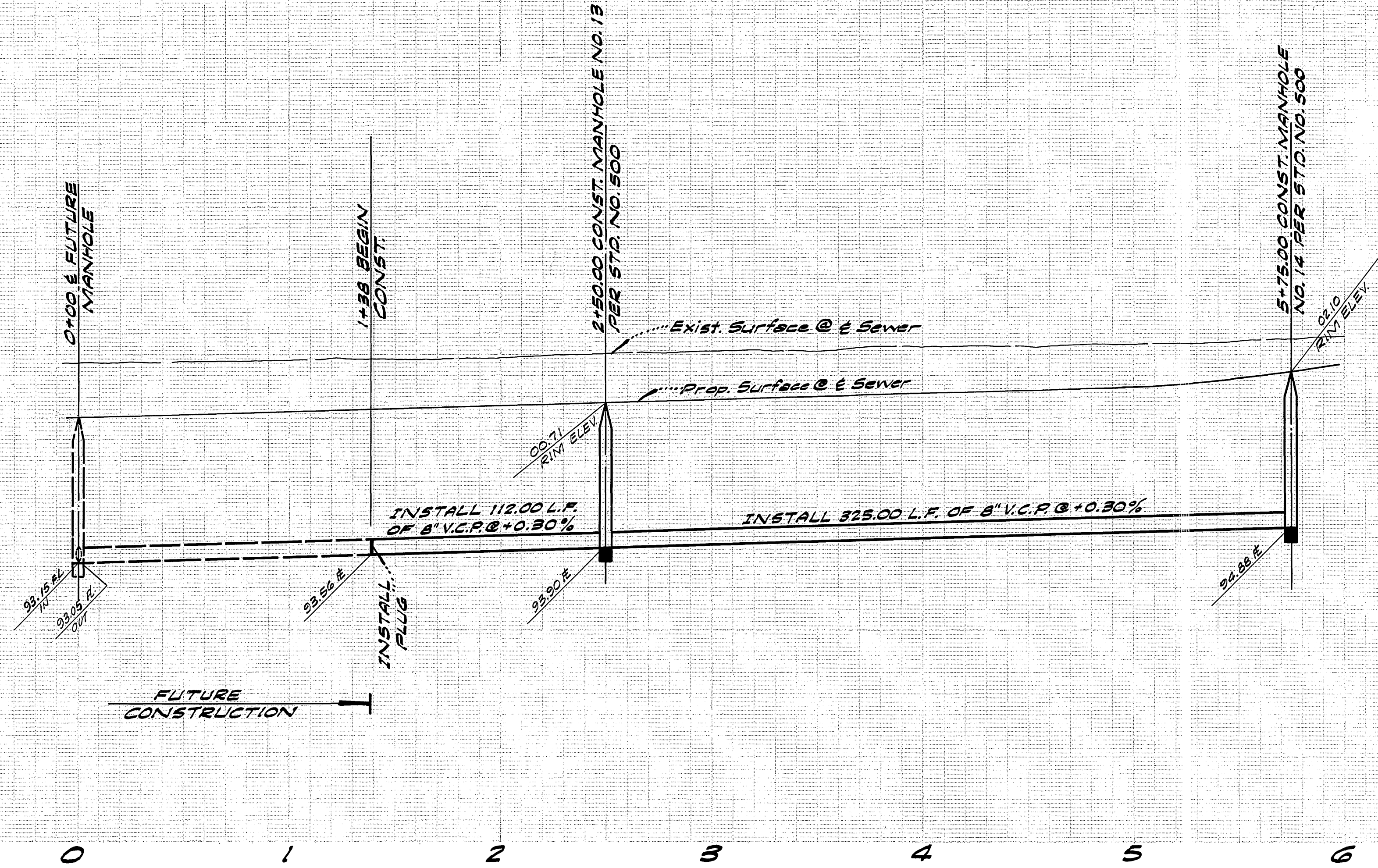
710

700

700

690

690



BENCH MARK:
 NAIL IN N.E. CURB RETURN AT
 R.C.F.C. CHANNEL AT LA SIERRA
 AND COLLETT - G/R F.B. 866 PG. 32
 ELEVATION 701.611

* As Built 12-75 KBT

PUBLIC UTILITIES DEPARTMENT
 APPROVED BY: *[Signature]* DATE: 8-22-75
 CHIEF WATER UTILITIES ENGINEER

ALBERT A. WEBB ASSOCIATES
 CIVIL ENGINEERS
 RIVERSIDE, CALIFORNIA
 APPROVED BY: *[Signature]* DATE: 5-27-75
 R.E. No. 16066

Revised R/W Line & S.W. on Penrod Dr. 8-11-75
 REVISIONS
 DESIGNED BY: P.H. DRAWN BY: P.H. CHECKED BY: B.M.

CITY OF RIVERSIDE, CALIFORNIA
 PUBLIC WORKS DEPARTMENT
 APPROVED BY: *[Signature]* DATE: 9-12-75
 DIRECTOR OF PUBLIC WORKS

SEWER PLAN AND PROFILE
 MODEL HOMES
 PENROD DRIVE
 TRACT NO. 5677
 SCALE: HORIZ. 1"=40', VERT. 1"=4'

ACCOUNT No. 75-107
 DRAWING NUMBER
 S-1009
 SHEET 6 OF 6
 75-107 - B