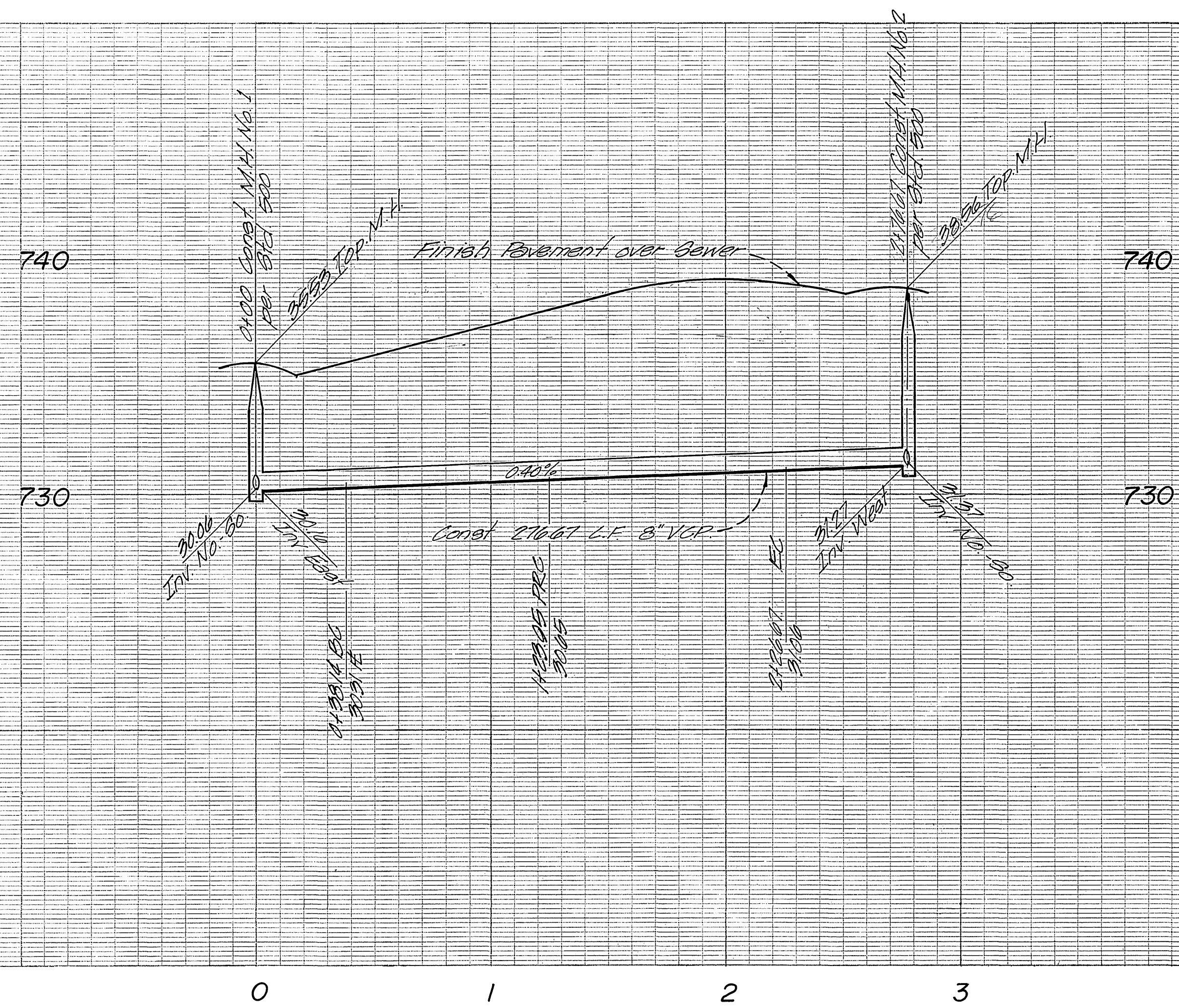
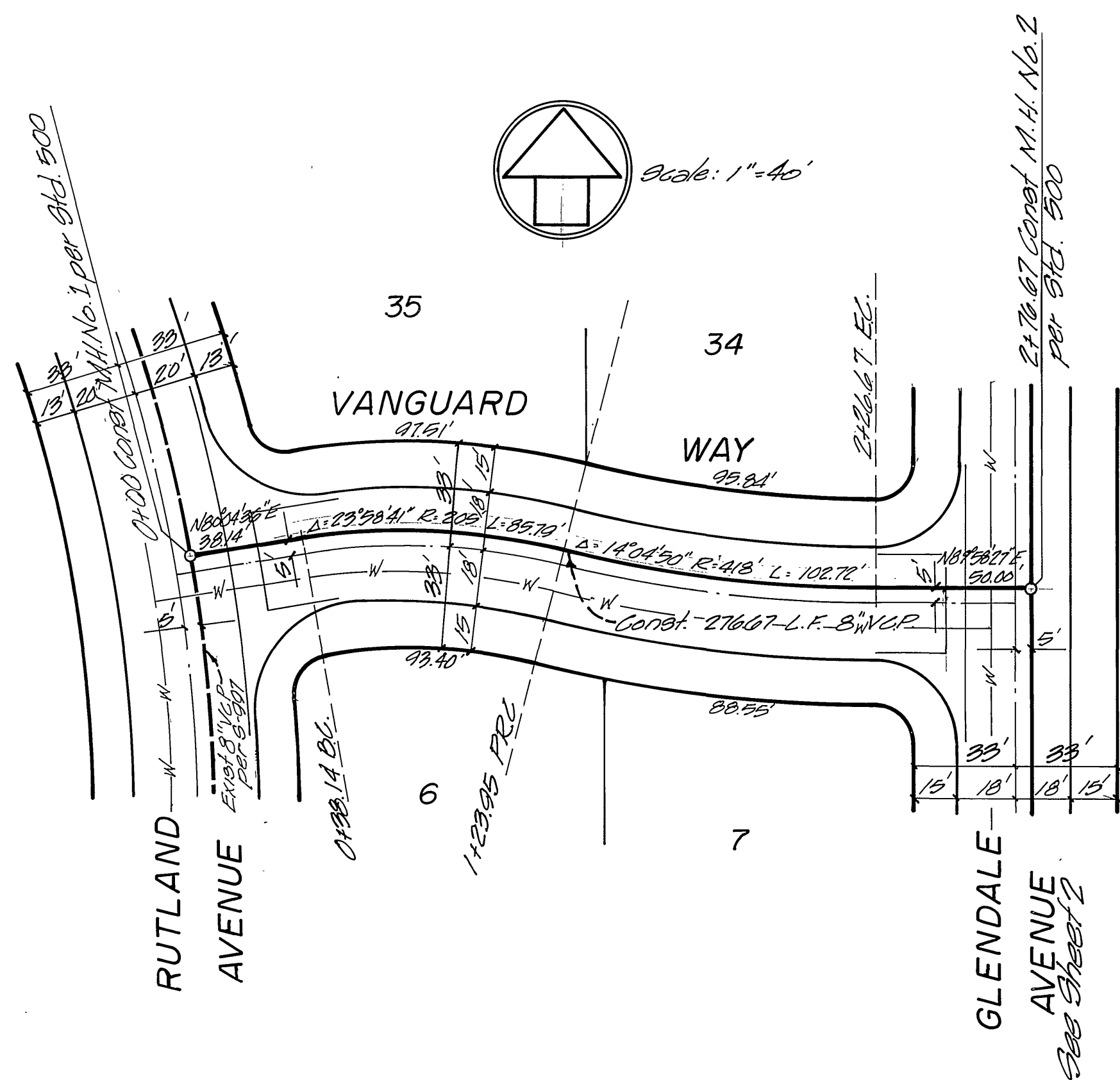


BENCH MARK
 P.K. nail in center of Northeast curb
 return at Arlington & Crest
 Elev. = 759.23 per F.B. 704/41



Profile Scale:
 Horiz. 1" = 40'
 Vert. 1" = 4'



Note: For laterals on Rutland, see
 Street plan for Tract 5104-3 (R-1832)
 or Sewer Plan S-007

GENERAL NOTES

1. Construction shall be in accordance with Standard Specifications for Public Works Construction 1973 Edition and the City of Riverside Standard Drawings.
2. It shall be the responsibility of the contractor to clear the right-of-way in accordance with the provisions of law as it affects each utility, including irrigation lines appurtenances, and at no cost to the city.
3. Laterals to be 4" and extended to property line. Exact location to be determined at time of construction by survey.
4. Prior to construction of sewer, the contractor is to expose existing sewer and contact the engineer for verification of existing elevations.
5. The sewer contractor shall adjust manholes to final grade after paving is completed.
6. A plug shall be installed and will remain in place where the new sewer connects with the existing sewer until such time that the new sewer is accepted by the city.

NOTICE TO CONTRACTOR

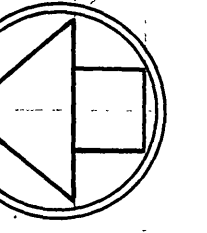
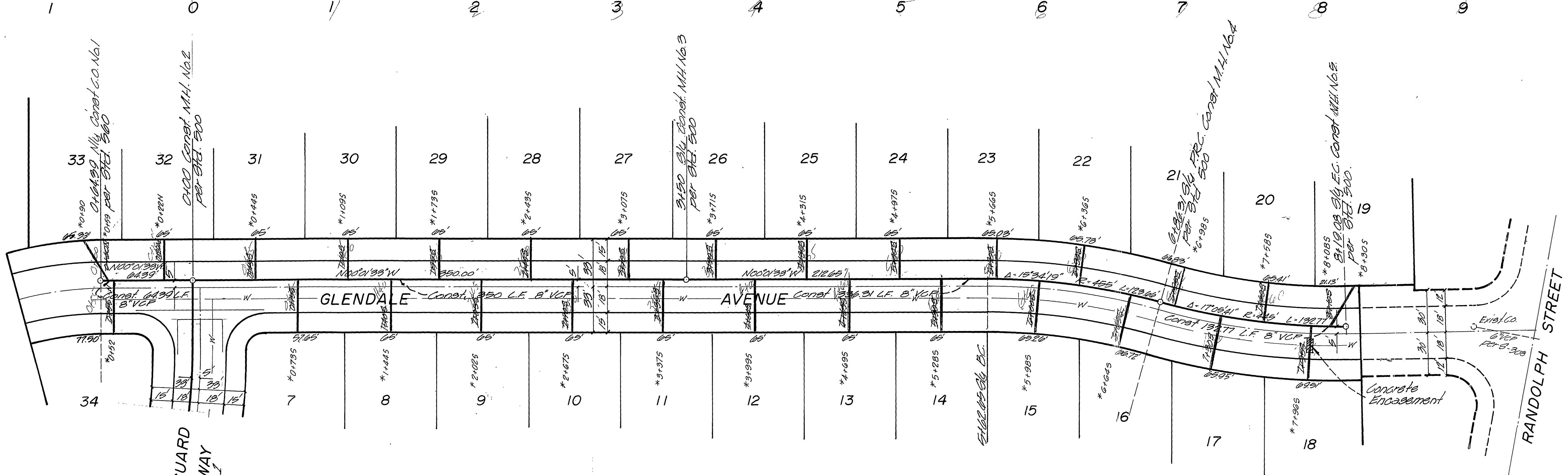
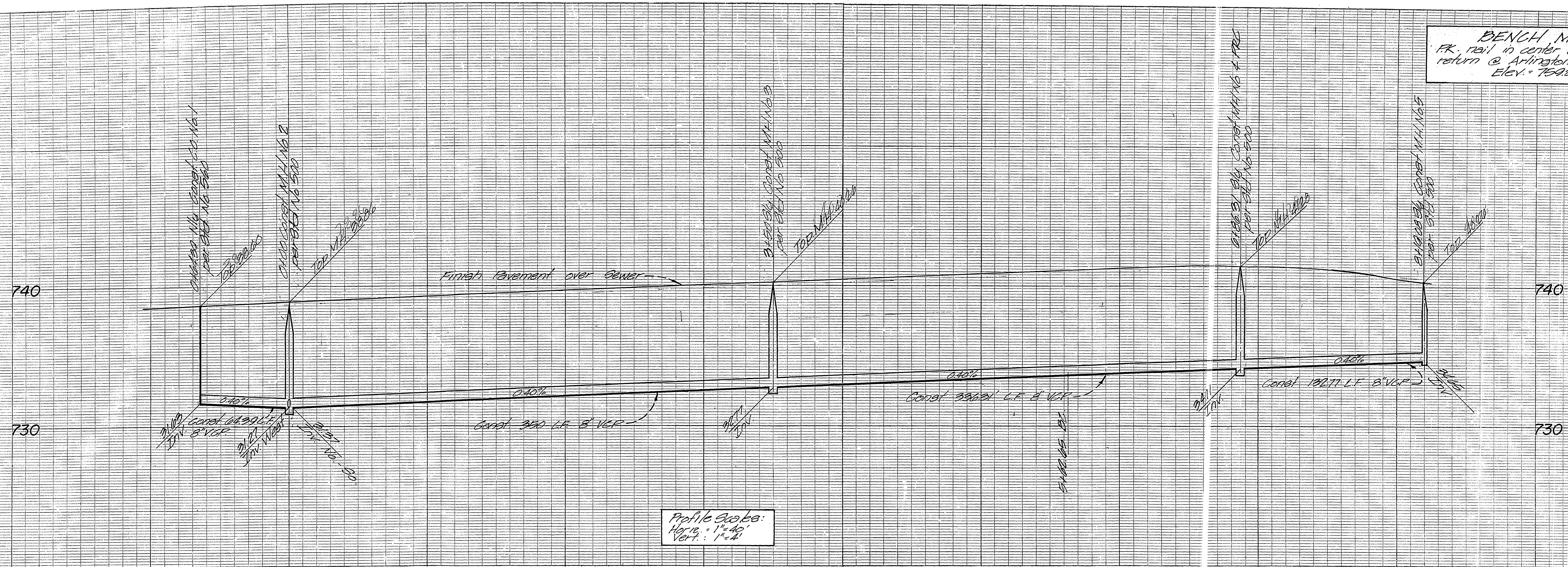
The existence and location of any underground utility pipes or structures shown on these plans are obtained by a search of the available records. To the best of our knowledge there are no existing utilities except as shown on these plans. The contractor is required to take due precautionary measures to protect the utility lines shown and any other lines not of record.

S-1010

APPROVED BY: Chief Water Utility Engineer	MAXWELL, BROWN & MULLINS planning engineering surveying SAN BERNARDINO, CALIFORNIA PHILIP E. BROWN C.E. 18679	J.O.		CITY OF RIVERSIDE, CALIFORNIA DEPARTMENT OF PUBLIC WORKS	SEWER PLANS	PROJECT NO.
		F.B.			APPROVED BY: OFFICE ENGINEER PARK DEPARTMENT TRAFFIC DIVISION ASSISTANT CITY ENG.	TRACT 5104-3 VANGUARD WAY
CHECKED BY: DATE 5-14-75	DRAWN BY: DATE	MARK DESIGNED BY	REVISIONS DRAWN BY	APPR. DATE CHECKED BY:	DATE 10-2-75 HORIZ. SCALE: 1" = 40' VERT. SCALE: 1" = 4'	FILE NO.

* As Built 12-75 KET

BENCH MARK
 P.K. rail in center of Northcot curb
 return @ Arlington & Crest
 Elev. = 759.23 per F.B. 704/41



Scale: 1" = 40'

NOTE: See Sheet 1 for General Notes.

For lot 18, encase sewer lateral 4.5' to
 side of water main with 18" C. Conc. encase-
 ment, per Spel Dwg. CWD-023, or install
 cast iron pipe lateral 4.5' to side of water
 main.

*As Built 12-75 KPT

APPROVED BY: Chief Water Utility Engineer	MAXWELL, BROWN & MULLINS planning engineering surveying SAN BERNARDINO, CALIFORNIA PHILIP E. BROWN C.E. 18679	I.O. F.B. CHECKED BY: DRAWN BY: DESIGNED BY:	CITY OF RIVERSIDE, CALIFORNIA DEPARTMENT OF PUBLIC WORKS APPROVED BY: OFFICE ENGINEER PARK DEPARTMENT TRAFFIC DIVISION ASSISTANT CITY ENG.	SEWER PLANS TRACT 5104-3 GLENDALE AVENUE		PROJECT NO. S-1010
				SHEET 2 OF 22		DATE 10-2-75