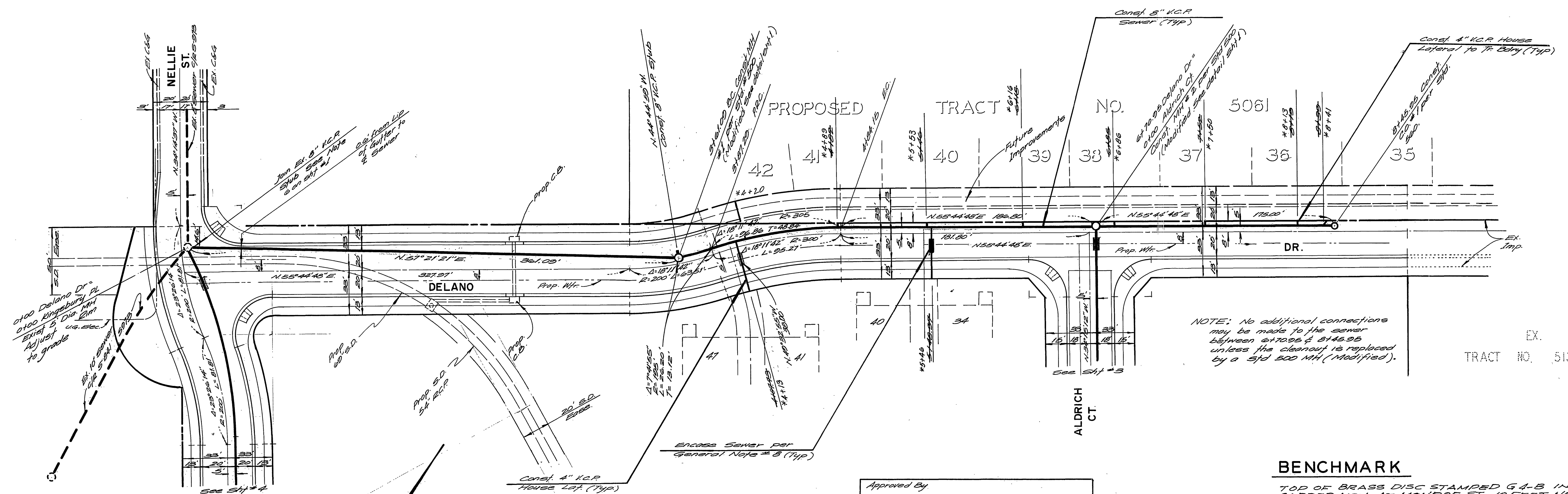


NOTE: See sheet No 1 for general notes.



NOTE: No additional connections may be made to the sewer between 6+70.95 & 6+45.95 unless the cleanout is replaced by a 5' dia 500 MH (Modified).

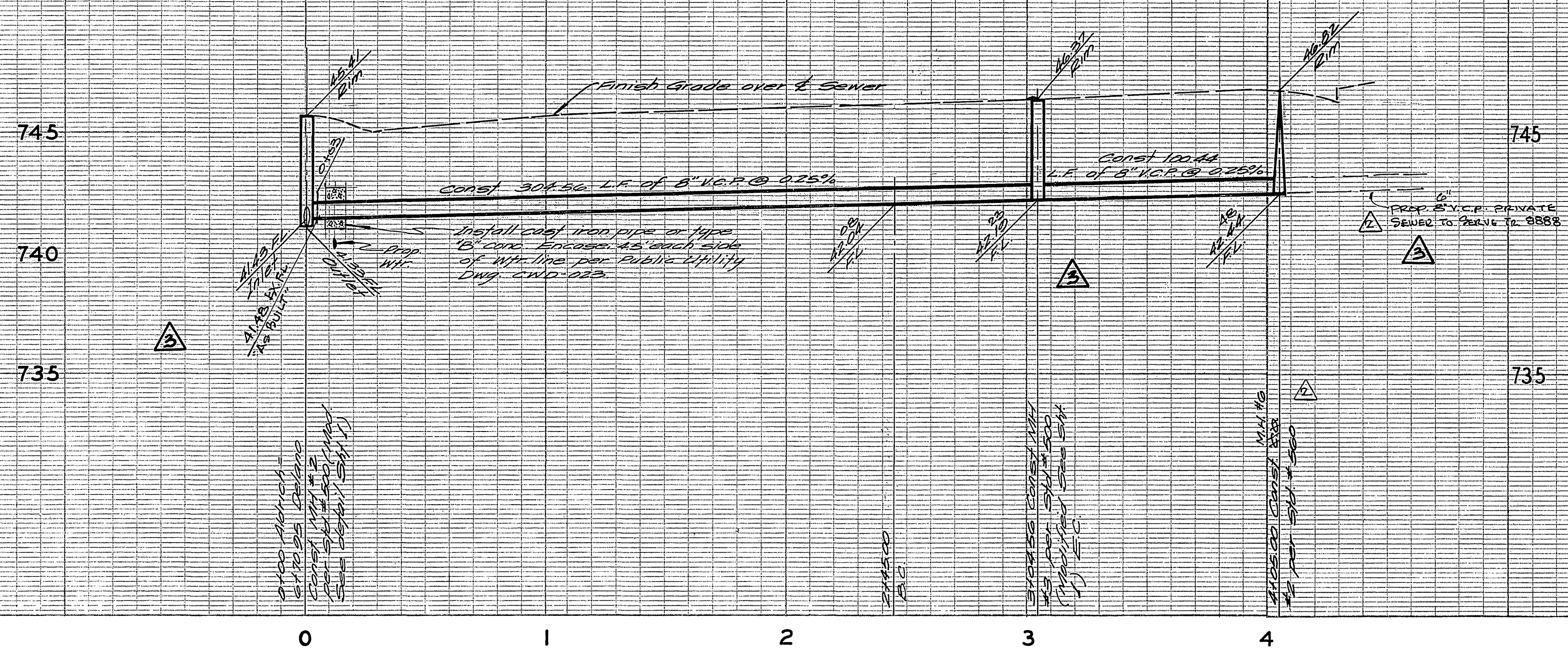
EX. TRACT NO. 5130-1

BENCHMARK

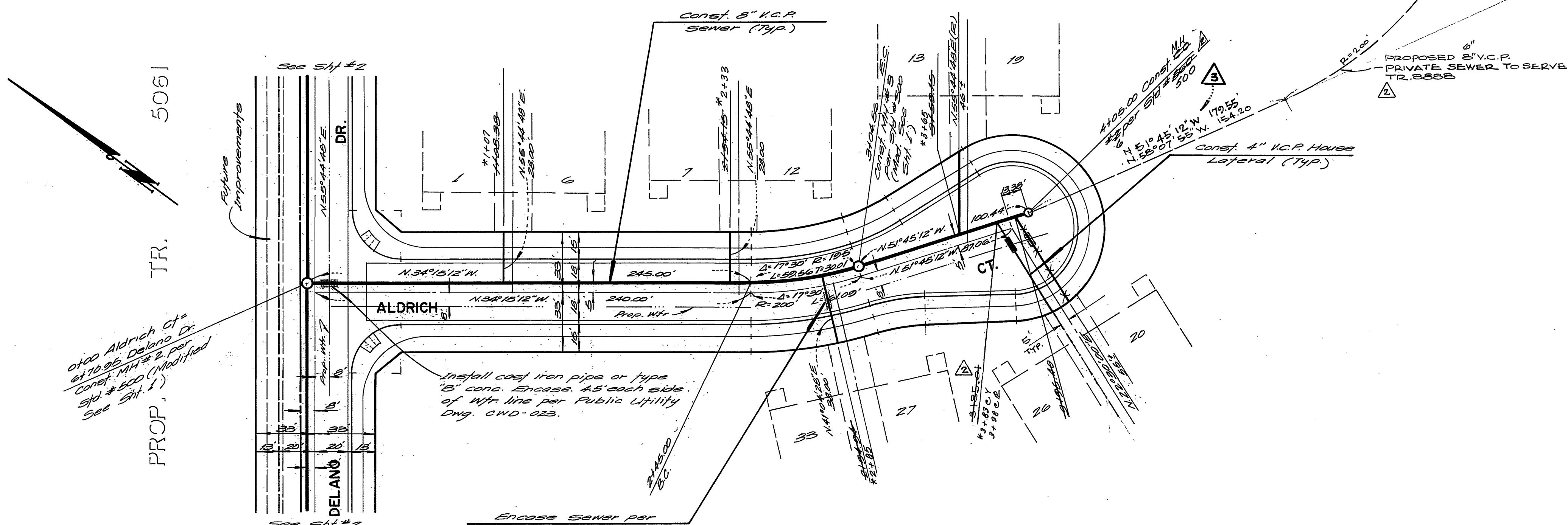
TOP OF BRASS DISC STAMPED G.A.B. IN CAPED MON. AT MONROE ST. 10 FEET NORTH-WESTERLY OF E. CALIFORNIA AVE., CITY OF RIVERSIDE F. B. 735/44 ELEV. = 754.925

*AS BUILT 8-71 RDT

ALBERT A. WEBB ASSOCIATES CIVIL ENGINEERS RIVERSIDE, CALIFORNIA APPROVED BY <i>[Signature]</i> DATE 5/12/75 R.E. No. 0812 W.O. 73-362 FOR: WOODVIEW DEVELOPERS F.B. 1029	Approved By <i>[Signature]</i> Chief Water Utility Engineer 7-24-75 Date	CITY OF RIVERSIDE, CALIFORNIA PUBLIC WORKS DEPARTMENT APPROVED BY <i>[Signature]</i> BY DATE <i>[Signature]</i> PRINCIPAL ENGINEER PARK DEPARTMENT TRAFFIC DIVISION CHIEF PUB. WKS. ENGR. 10-23 DATE 10-23-75	SEWER PLAN AND PROFILE DELANO DRIVE TRACT NO. 8888-1 5130-2 SCALE: HORIZ: 1" = 40' VERT: 1" = 4'	ACCOUNT No. 73-362 DRAWING NUMBER S-1012 SHEET 2 OF 4 73-362 B
	DESIGNED BY <i>[Signature]</i> DRAWN BY <i>[Signature]</i> CHECKED BY <i>[Signature]</i>	CHANGED TRACT NO. 76-8888-1 MARK REVISIONS APPR. DATE 10-23	DATE 10-23-75	DATE 10-23-75



NOTE: See Sheet 1 for general notes

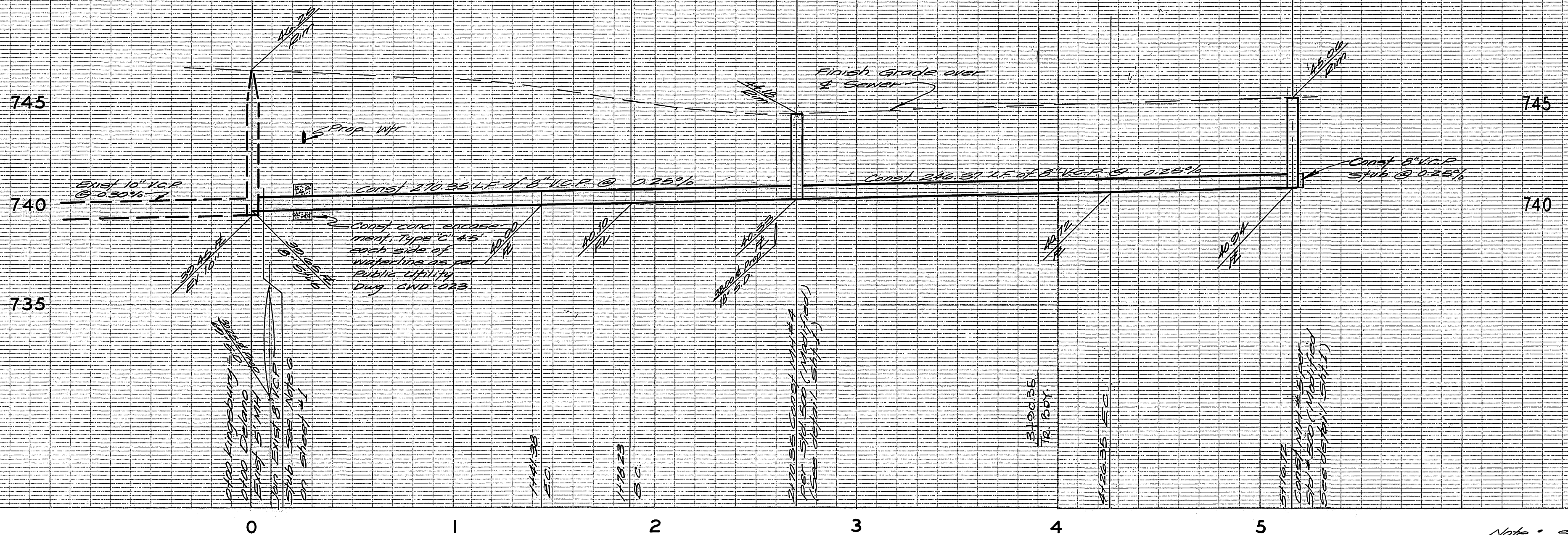


BENCHMARK

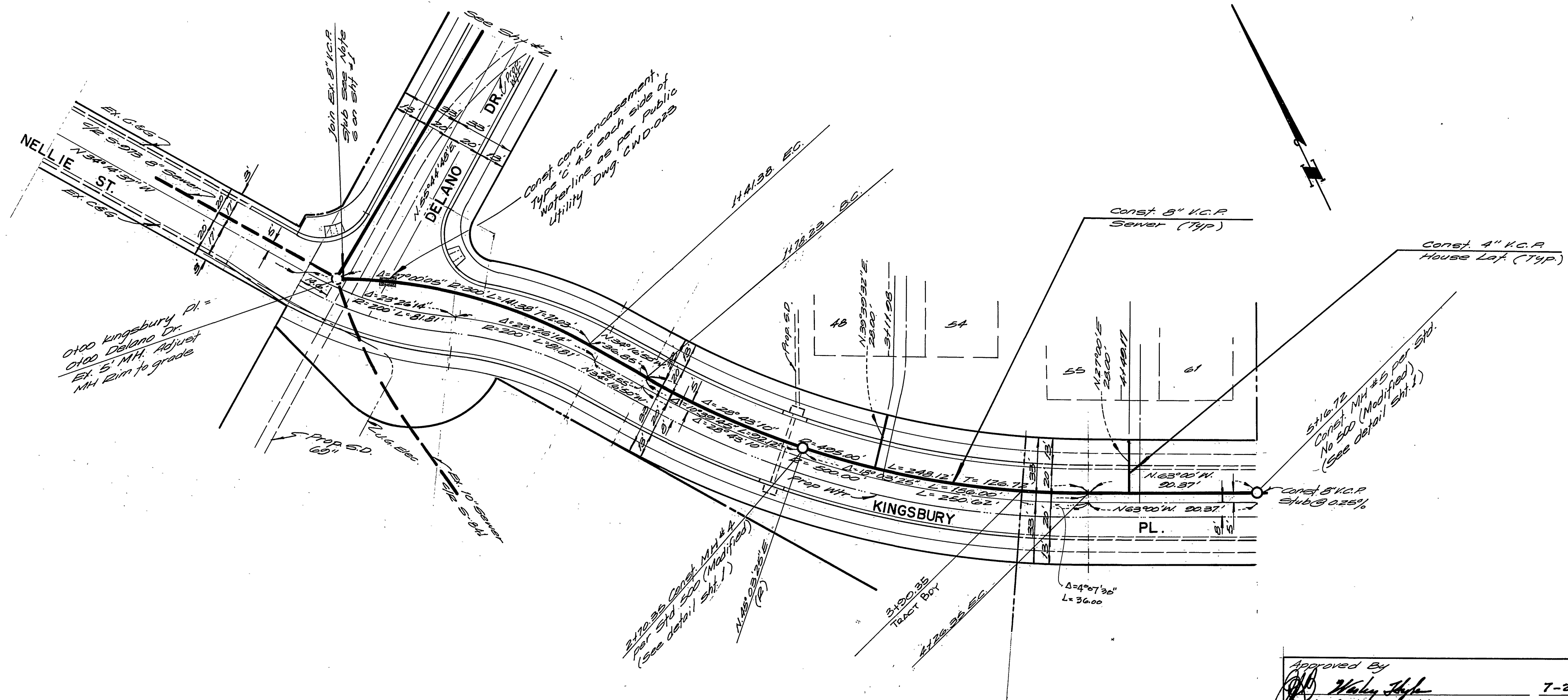
TOP OF BRASS DISC STAMPED G.A.B. IN CAPPED MON. AT MONROE ST 10 FEET NORTH-WEST CORNER OF CALIFORNIA AVE. CITY OF RIVERSIDE P.B. 755/44 ELEV = 754.925

*AS BUILT 8-78 KBT

ALBERT A. WEBB ASSOCIATES CIVIL ENGINEERS RIVERSIDE, CALIFORNIA APPROVED BY: <i>Ernest N. Webb</i> DATE: 5/12/75 R.E. No. 2326 W.O. 73-362 FOR WOODWAY DEVELOPERS P.B. 1029	Approved By <i>[Signature]</i> Chief Water Utility Engineer Date: 7-23-75	CITY OF RIVERSIDE, CALIFORNIA PUBLIC WORKS DEPARTMENT	SEWER PLAN AND PROFILE	ACCOUNT No. 73-362 DRAWING NUMBER
	Approved By <i>[Signature]</i> Chief Public Works Engineer Date: 10-23-75	APPROVED BY PRINCIPAL ENGINEER PARK DEPARTMENT TRAFFIC DIVISION	APPROVED BY <i>[Signature]</i> DIRECTOR OF PUBLIC WORKS	ALDRICH COURT TRACT NO. 8888-1 5130-2
DESIGNED BY: <i>[Signature]</i> DRAWN BY: <i>[Signature]</i> CHECKED BY: <i>[Signature]</i>		DATE: 10-23-75	SCALE: HORIZ: 1"=40' VERT: 1"=8'	



Note: See Sheet 1 for General Notes



BENCHMARK

TOP OF BRASS DISC STAMPED 648 IN CAPTED MON. AT MONROE ST 10 FEET NORTH-WESTERLY OF E CALIFORNIA AVE. CITY OF RIVERSIDE F.B. 735/44 ELEV. = 754.925

* SEE S-1013 FOR AS BUILT 8-78 RPT

Approved By
Wally High
 Chief Water Utility Engineer
 7-22-15
 Date

ALBERT A. WEBB ASSOCIATES
 CIVIL ENGINEERS
 RIVERSIDE, CALIFORNIA
 APPROVED BY *Albert A. Webb* DATE 5/12/15
 R.E. No. 2826

DESIGNED BY <i>Wally High</i>	DRAWN BY <i>Wally High</i>	CHECKED BY <i>Wally High</i>
DATE 10/23/14	DATE 10/23/14	DATE 10/23/14

CITY OF RIVERSIDE, CALIFORNIA
 PUBLIC WORKS DEPARTMENT
 APPROVED BY *Wally High*
 PRINCIPAL ENGINEER
 PARK DEPARTMENT
 TRAFFIC DIVISION
 CHIEF PUB. WKS. ENGR. 10/23/14

SEWER PLAN AND PROFILE
 KINGSBURY PLACE
 TRACT NO. 8888-1-2
 5130-2

ACCOUNT No. 73-362
 DRAWING NUMBER
 9-1012
 SHEET 4 OF 4
 73-362B