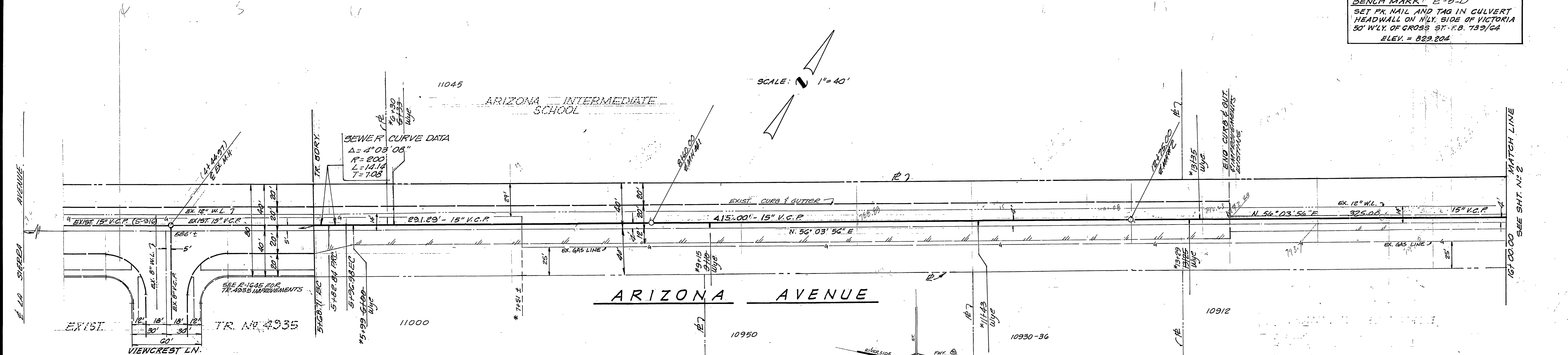


BENCH MARK: E-3-D
 SET PK. NAIL AND TAG IN CULVERT
 HEADWALL ON N.W. SIDE OF VICTORIA
 50' W'LY. OF CROSS ST. F.B. 732/64
 ELEV. = 829.204



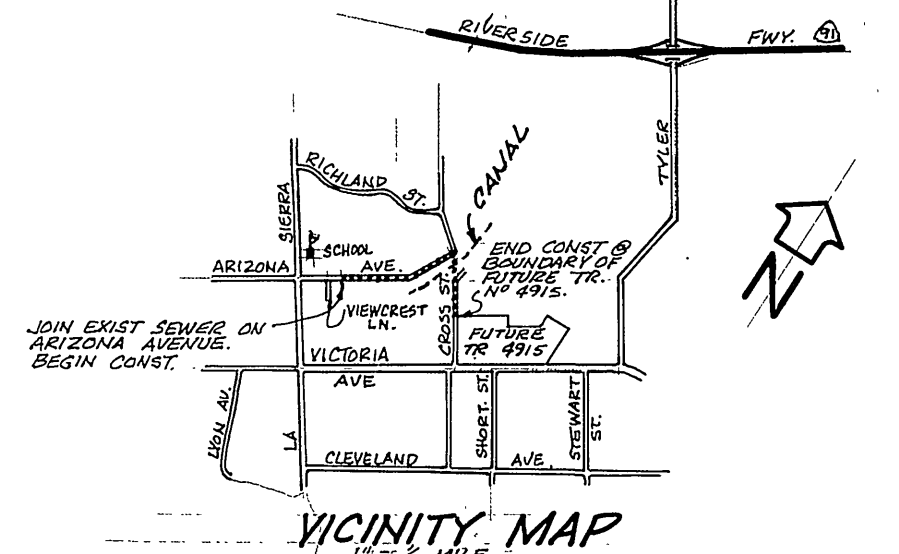
GENERAL NOTES

- CONSTRUCTION SHALL BE IN ACCORDANCE WITH STANDARD SPECIFICATION FOR PUBLIC WORKS CONSTRUCTION 1973 EDITION, AND CITY OF RIVERSIDE STD. DNG.
- A PLUG SHALL BE INSTALLED IN THE UPSTREAM SIDE OF THE EXIST. M.H. AT 44+44.97 AND WILL REMAIN IN PLACE UNTIL SUCH TIME THAT THE NEW SEWER IS ACCEPTED BY THE CITY.
- PRIOR TO ANY CONSTRUCTION SOUTHERN CALIFORNIA GAS CO. MUST BE CONTACTED AT (714) 682-1660 TO VERIFY EXISTING GAS LINE ELEVATION.
- SEWER BEDDING, PER CASE I, STD. DRAWING NO. 452.
- PRIOR TO CONSTRUCTION OF SEWER, CONTRACTOR IS TO EXPOSE EXISTING SEWER AND CONTACT ENGINEER FOR VERIFICATION OF EXISTING ELEVATION.

NOTICE TO CONTRACTOR

THE EXISTENCE AND LOCATION OF ANY UNDERGROUND UTILITY PIPES OR STRUCTURES SHOWN ON THESE PLANS ARE OBTAINED BY A SEARCH OF THE AVAILABLE RECORDS. TO THE BEST OF OUR KNOWLEDGE, THERE ARE NO EXISTING UTILITIES, EXCEPT AS SHOWN ON THESE PLANS. THE CONTRACTOR IS REQUIRED TO TAKE PRECAUTIONARY MEASURES TO PROTECT THE UTILITY LINES SHOWN AND ANY OTHER LINES NOT OF RECORD OR NOT SHOWN ON THESE PLANS.

SCALE: 1" = 40'



Contractor agrees that he shall assume sole and complete responsibility for job site conditions during the course of construction of this Project, including safety of all persons and property; that this requirement shall apply continuously and not be limited to normal working hours; and that the Contractor shall defend, indemnify and hold the Owner and the Engineer harmless from any and all liability, real or alleged, in connection with the performance of work on this Project, excepting for liability arising from the sole negligence of the Owner or the Engineer.

APPROVED BY:

 CHIEF PUBLIC UTILITIES ENGINEER - WATER, DATE 10-7-75

V.T.N. consolidated, inc.
 ENGINEERS ARCHITECTS PLANNERS 2381 CAMPUS DRIVE, IRVINE, CALIFORNIA 92714
 APPROVED BY:

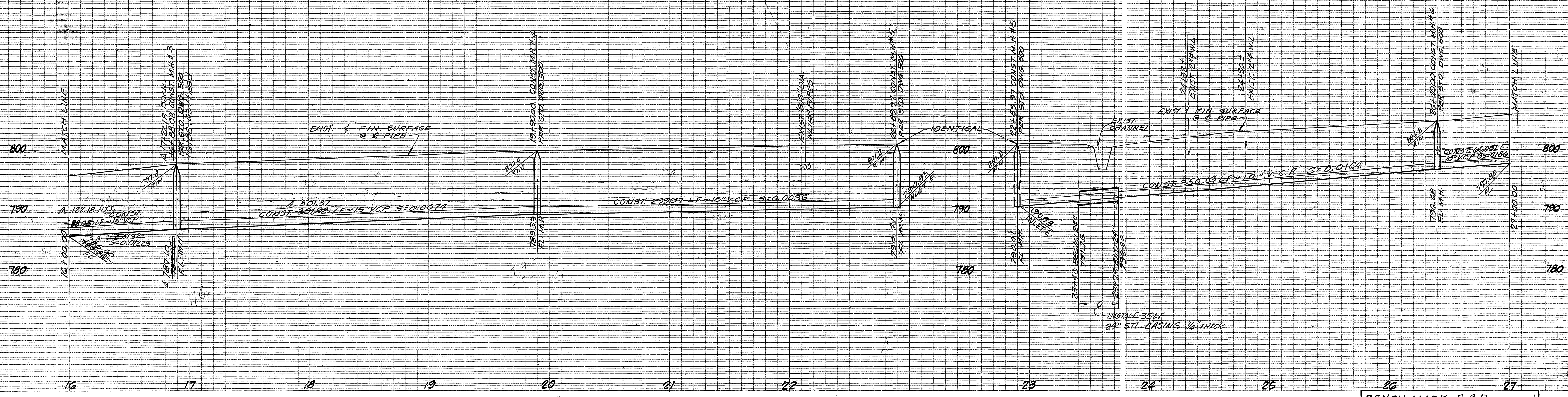
 PAUL H. BARR 193 - R.C.E. 15851 DATE 5-15-75

REVISIONS
 MARK REVISIONS APPR. DATE
 DESIGNED BY DRAWN BY CHECKED BY

CITY OF RIVERSIDE, CALIFORNIA
 DEPARTMENT OF PUBLIC WORKS
 APPROVED BY:

 DIRECTOR OF PUBLIC WORKS
 DATE 1/30/76

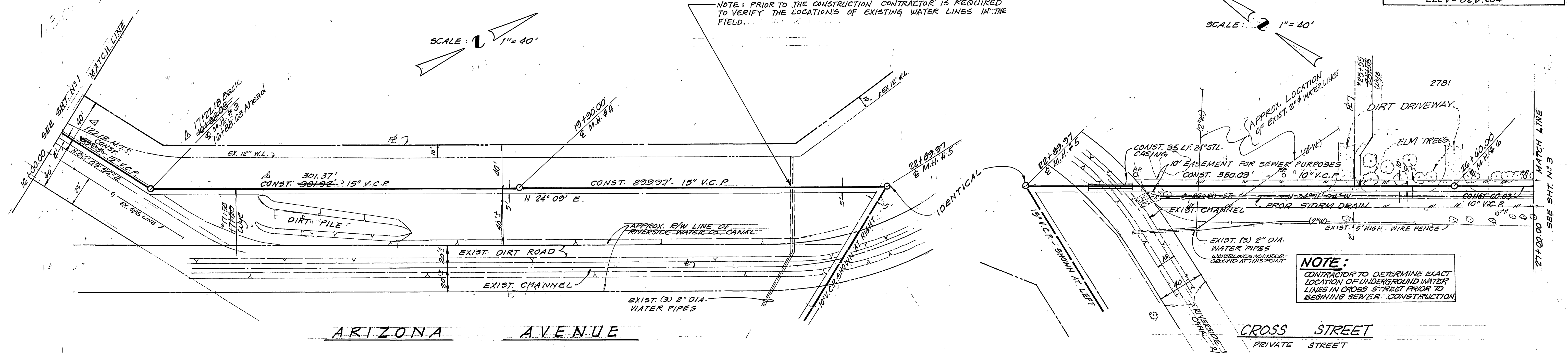
SEWER PLAN & PROFILE
 ARIZONA AVENUE
 TR 4915 SEWER EXTENSION
 PROJECT NO. S-1014
 SHEET 1 OF 3
 HORIZ. SCALE: 1" = 40' VERT. SCALE: 1" = 8'
 FILE NO.



BENCH MARK: E-3-D
 SET PK. NAIL AND TAG IN CULVERT
 HEADWALL ON N'LY SIDE OF VICTORIA
 50' W'LY. OF CROSS ST. - F.B. 799/64
 ELEV = 829.204

NOTE: PRIOR TO THE CONSTRUCTION CONTRACTOR IS REQUIRED
 TO VERIFY THE LOCATIONS OF EXISTING WATER LINES IN THE
 FIELD.

SCALE: 1" = 40'



NOTE:
 CONTRACTOR TO DETERMINE EXACT
 LOCATION OF UNDERGROUND WATER
 LINES IN CROSS STREET PRIOR TO
 BEGINNING SEWER CONSTRUCTION

NOTE:
 DURING CONST. CROSS STREET TO REMAIN
 OPEN TO TRAFFIC AT ALL TIMES

SEE SHEET NO. 1 FOR GENERAL NOTES

APPROVED BY:

 10-17-75
 CHIEF PUBLIC UTILITIES ENGINEER - WATER DATE

VEN
 CONSULTANTS, INC.
 ENGINEERS ARCHITECTS PLANNERS 2001 CAMPUS DRIVE, IRVINE, CALIFORNIA 92614
 APPROVED BY:

 5-15-75
 PAUL H. BARR 105 - R.C.E. 15857 DATE

MARK	REVISIONS	APPR.	DATE

CITY OF RIVERSIDE, CALIFORNIA
 DEPARTMENT OF PUBLIC WORKS
 APPROVED BY:

 DATE 1/30/76
 DIRECTOR OF PUBLIC WORKS

SEWER PLAN & PROFILE
 ARIZONA AVENUE
 CROSS STREET (PRIVATE STREET)
 TR-4915 SEWER EXTENSION
 HORIZ. SCALE: 1" = 40'
 VERT. SCALE: 1" = 8'

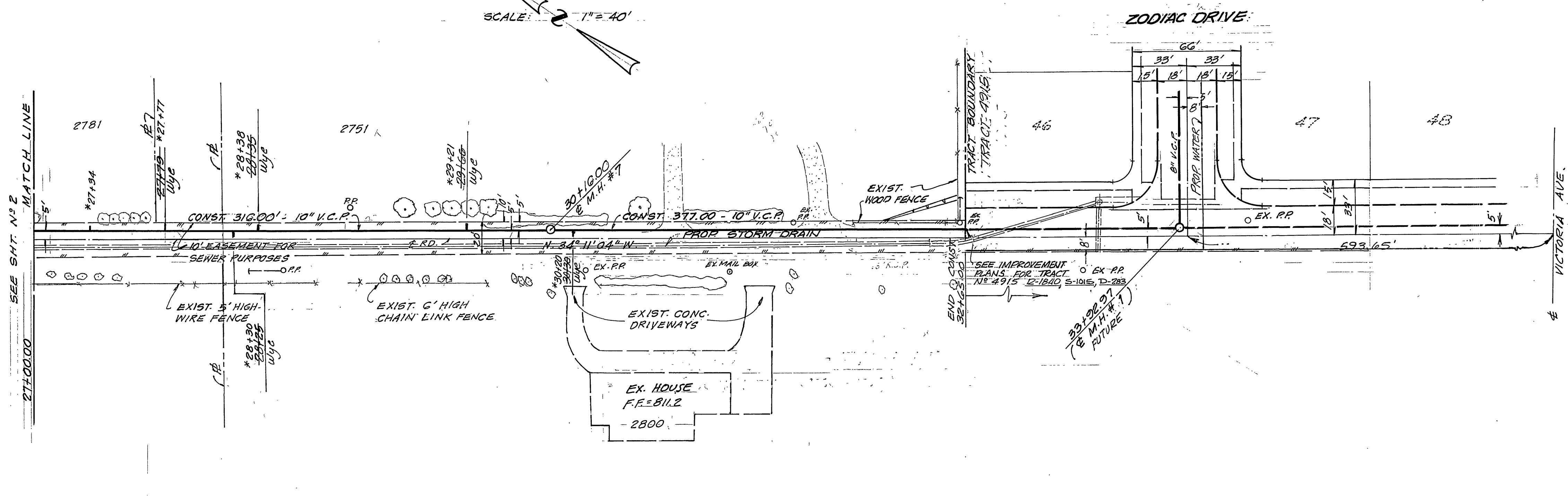
PROJECT NO.
 S-1014
 SHEET 2 OF 3
 FILE NO.

*AS BUILT 8-76 KPT



BENCH MARK: E-3-D
 SET PK. NAIL AND TAG IN CULVERT
 HEADWALL ON NLY. SIDE OF VICTORIA
 50' WLY. OF CROSS ST. - F.B. 739/64
 ELEV. = 829.204

SCALE: 1" = 40'



NOTE:
 DURING CONSTRUCTION CROSS STREET
 TO REMAIN OPEN TO TRAFFIC AT ALL TIMES

CROSS STREET
 (PRIVATE STREET)

APPROVED BY:
[Signature] 10-17-75
 CHIEF PUBLIC UTILITIES ENGINEER-WATER DATE

VUM consolidated, inc.
 ENGINEERS ARCHITECTS PLANNERS, 330 CAMPUS DRIVE, IRVINE, CALIFORNIA 92714
 APPROVED BY:
[Signature] 5-15-75
 PAUL H. BARRIS - RCE 15857 DATE

MARK	REVISIONS	APPR. DATE
DESIGNED BY	DRAWN BY	CHECKED BY

CITY OF RIVERSIDE, CALIFORNIA
 DEPARTMENT OF PUBLIC WORKS
 APPROVED BY: *[Signature]* 1/30/76
 OFFICE ENGINEER
 PARK DEPARTMENT
 TRAFFIC DIVISION
 ASSISTANT CITY ENG.

*AS BUILT 8-76 KBT
SEWER PLAN & PROFILE
CROSS STREET
 (PRIVATE STREET)
TR 4915 SEWER EXTENSION
 PROJECT NO. **S-1014**
 SHEET **3** OF **3**
 HORIZ. SCALE: 1" = 40' VERT. SCALE: 1" = 8'
 FILE NO.