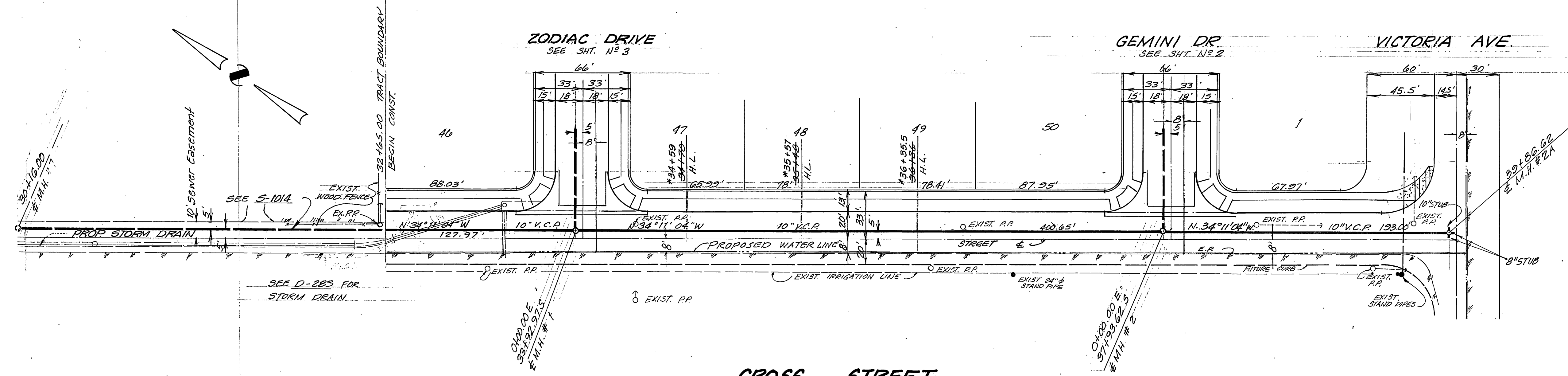
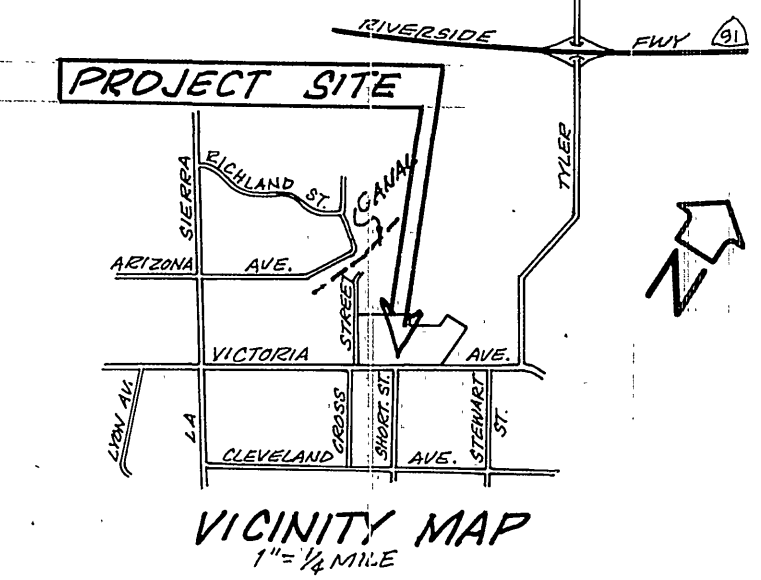


BENCH MARK (E3-D)  
 SET PK. NAIL AND TAG IN CULVERT  
 HEADWALL ON N.W. SIDE OF VICTORIA  
 50' W. OF CROSS ST.-FB. 739/64  
 ELEV. = 829.204



**CROSS STREET**

NOTE:  
 Contractor to determine exact  
 location of active irrigation lines  
 prior to construction - Call Gage Canal  
 Co. 683-8228 or 686-2455  
 48 hrs. prior to doing any work  
 around active irr. lines



**GENERAL NOTES**

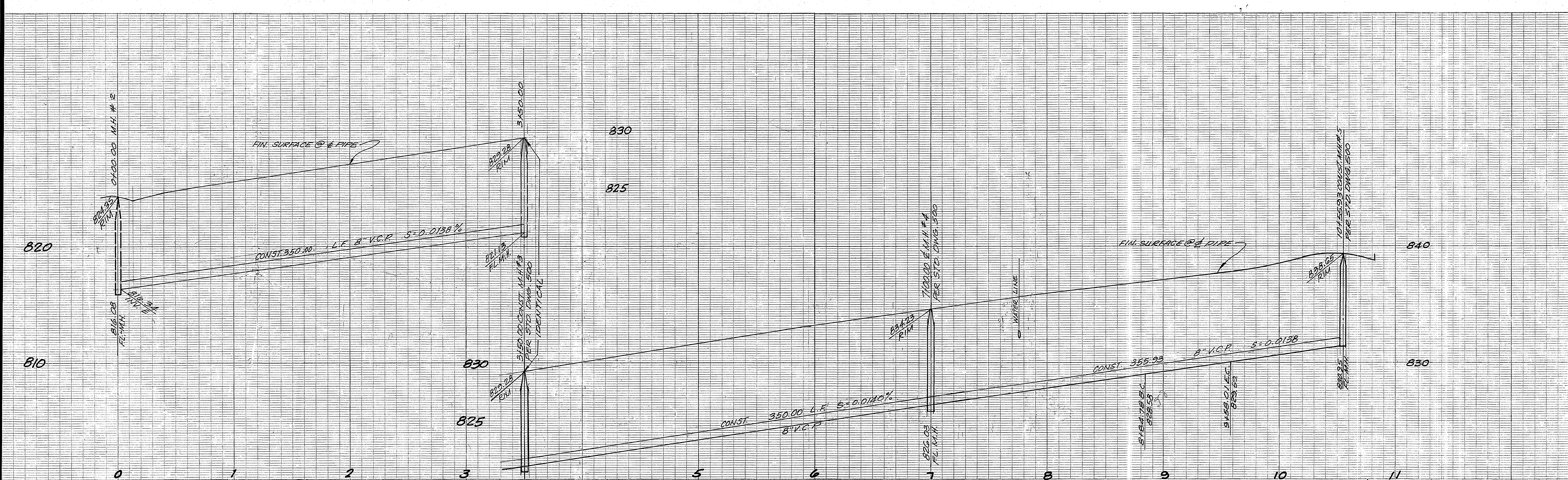
- CONSTRUCTION SHALL BE IN ACCORDANCE WITH STANDARD SPECIFICATION FOR PUBLIC WORKS CONSTRUCTION 1973 EDITION, AND CITY OF RIVERSIDE STD. DWGS.
- IT SHALL BE THE RESPONSIBILITY OF THE CONTRACTOR TO CLEAR THE RIGHT OF WAY OF IRRIGATION LINES AND APPURTENANCES AND AT NO COST TO THE CITY.
- SEWER CONTRACTOR SHALL ADJUST MANHOLES TO FINAL GRADE AFTER PAVING IS COMPLETE.
- LATERALS ARE 4" AND EXTEND TO PROPERTY LINE.
- PRIOR TO CONSTRUCTION OF SEWER, CONTRACTOR IS TO EXPOSE EXISTING SEWER AND CONTACT ENGINEER FOR VERIFICATION OF EXISTING ELEVATION.
- A PLUG SHALL BE INSTALLED AT M.H. #1 (Downstream Side) AND SHALL REMAIN IN PLACE UNTIL THE NEW SEWER IS ACCEPTED BY THE CITY.
- EXIST. POWER POLES ON NORTH SIDE OF CROSS STREET TO BE RELOCATED BY OTHERS PRIOR TO CONSTRUCTION OF SEWER.

**NOTICE TO CONTRACTOR**

THE EXISTENCE AND LOCATION OF ANY UNDERGROUND UTILITY PIPES OR STRUCTURES SHOWN ON THESE PLANS ARE OBTAINED BY A SEARCH OF THE AVAILABLE RECORDS TO THE BEST OF OUR KNOWLEDGE, THERE ARE NO EXISTING UTILITIES, EXCEPT AS SHOWN ON THESE PLANS. THE CONTRACTOR IS REQUIRED TO TAKE PRECAUTIONARY MEASURES TO PROTECT THE UTILITY LINES SHOWN AND ANY OTHER LINES NOT OF RECORD OR NOT SHOWN ON THESE PLANS.

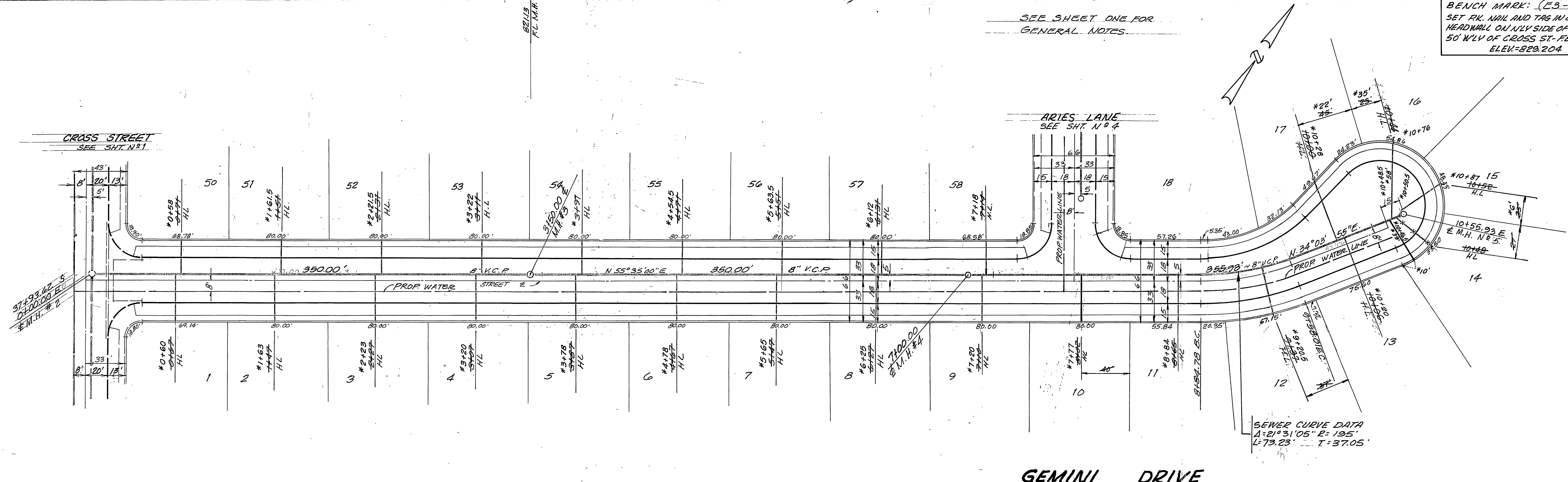
GAGE CANAL BY: <i>R. Khan</i> APPROVED BY: <i>Paul H. Barris</i> CHIEF PUBLIC UTILITIES ENGINEER - WATER 10-17-75 DATE		VUL CONSULTANTS, INC. ENGINEERS, ARCHITECTS, PLANNERS 2301 CAMPA DRIVE, IRVINE, CALIFORNIA 92614-3350		CITY OF RIVERSIDE, CALIFORNIA DEPARTMENT OF PUBLIC WORKS APPROVED BY: <i>William D. Gordon</i> DIRECTOR OF PUBLIC WORKS DATE: 1/30/76		SEWER PLAN AND PROFILE CROSS STREET FROM 727' N. OF VICTORIA AVE. TO VICTORIA AVE. TRACT 4915 PROJECT NO. S-1015 SHEET 1 OF 5 FILE NO.	
DESIGNED BY: <i>Paul H. Barris</i> DRAWN BY: <i>Paul H. Barris</i> CHECKED BY: <i>Paul H. Barris</i>		MARK: <i>WV</i> REVISIONS: <i>WV</i> APPR. DATE: <i>5-15-75</i> DATE:		*AS BUILT 6-77 KPT		HORIZ. SCALE: 1" = 40' VERT. SCALE: 1" = 4' INDEVED. P.S.	





SEE SHEET ONE FOR GENERAL NOTES.

BENCH MARK: (E3-D)  
 SET PK. NAIL AND TAG IN CURBVERT HEADWALL ON WLY SIDE OF VICTORIA 50' WLY OF CROSS ST. FB 739/64 ELEV. 829.204



GEMINI DRIVE

SAGE CANAL  
 BY: *[Signature]*

APPROVED BY  
*[Signature]*  
 CHIEF PUBLIC UTILITIES ENGINEER - WATER DATE 5-15-75

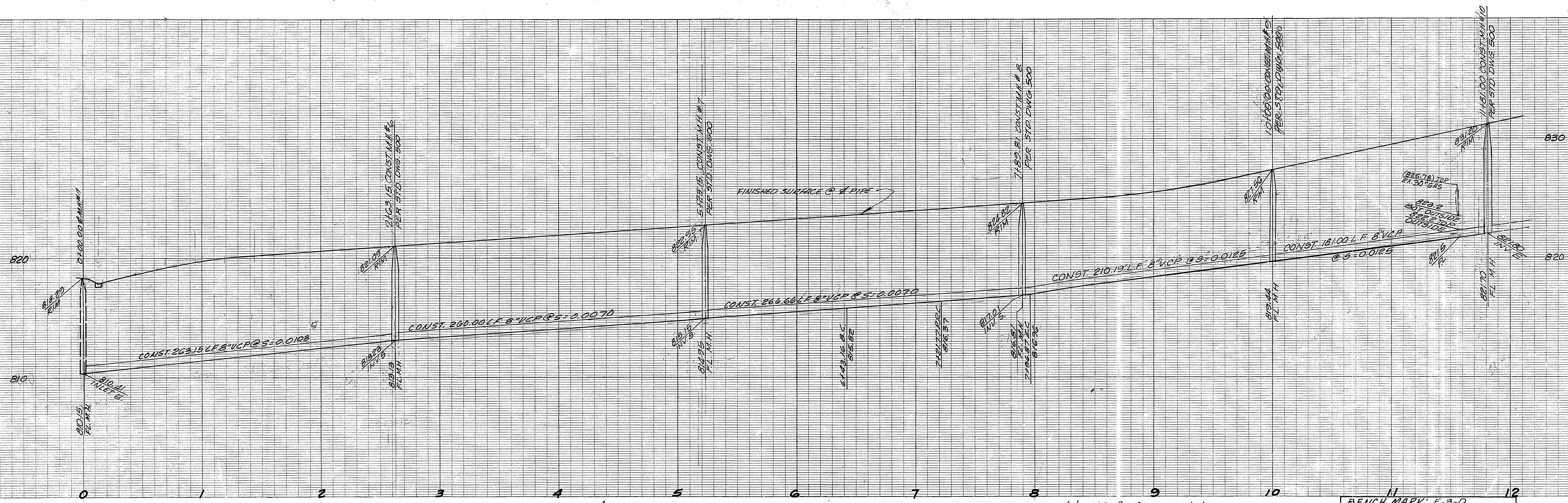
**VUN** consolidated, inc.  
 ENGINEERS ARCHITECTS - PLANNERS 230 CAMPUS DRIVE, IRVINE, CALIFORNIA 92614 (714) 833-2001  
 PAUL H. BARRIOS P.C.E. 19557 DATE 5-15-75

MARK	REVISIONS	APPR.	DATE

CITY OF RIVERSIDE, CALIFORNIA  
 DEPARTMENT OF PUBLIC WORKS  
 APPROVED BY  
*[Signature]*  
 DIRECTOR OF PUBLIC WORKS  
 DATE 1/30/76

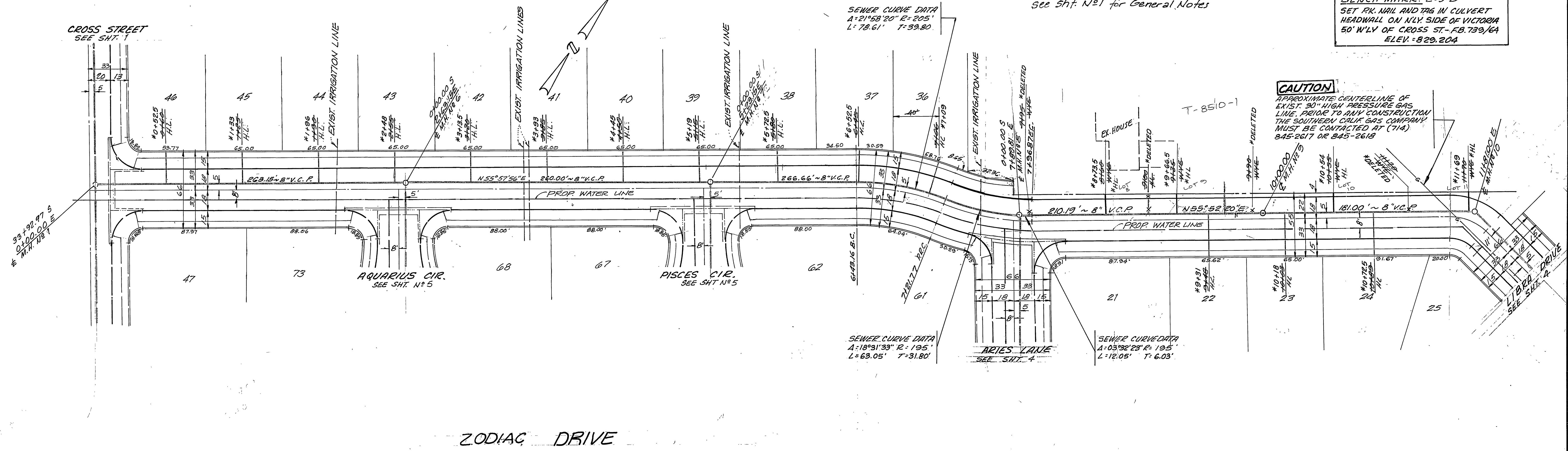
\*AS BUILT 6-77 RPT  
 SEWER PLAN AND PROFILE  
 GEMINI DRIVE FROM CROSS STREET TO 10561 50' CROSS ST.  
 TRACT N°4915  
 PROJECT NO. S-1015  
 SHEET 2 OF 5  
 HORIZ. SCALE: 1" = 40' VERT. SCALE: 1" = 4'





see Sht. N°1 for General Notes

BENCH MARK: E-3-D  
 SET PK. NAIL AND TAG IN CULVERT  
 HEADWALL ON NLY. SIDE OF VICTORIA  
 50' W'LY OF CROSS ST.-FB. 739/6A  
 ELEV. = 829.204



**CAUTION**  
 APPROXIMATE CENTERLINE OF  
 EXIST. 30\"/>

ZODIAC DRIVE

GAGE CANAL  
 BY: [Signature]

APPROVED BY  
 [Signature]  
 CHIEF PUBLIC UTILITIES ENGINEER - WATER

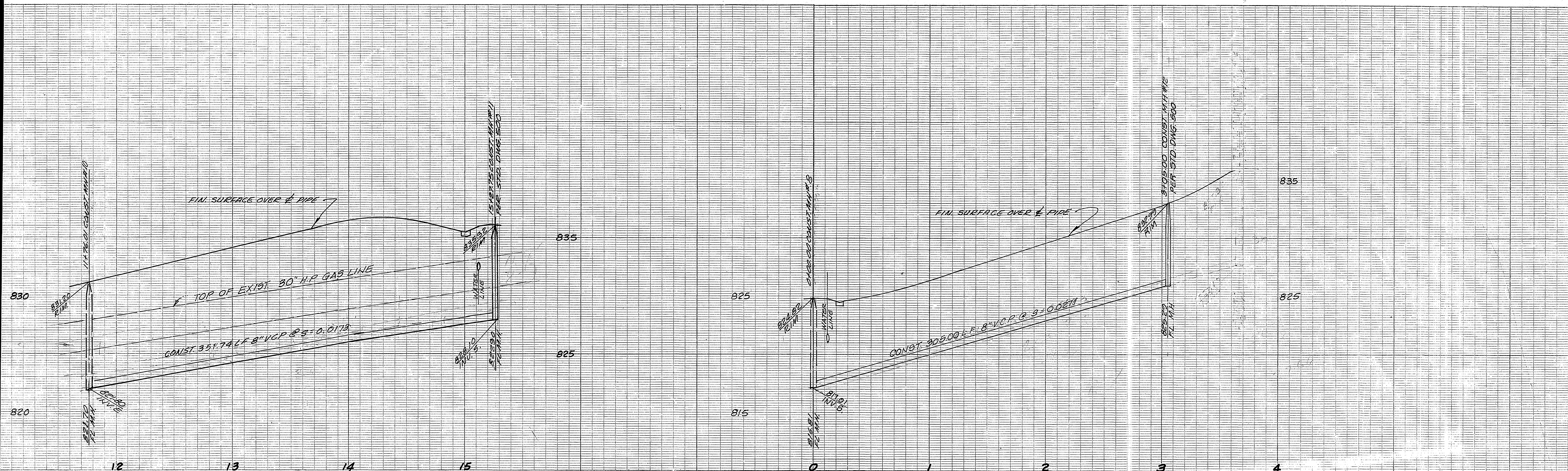
**VMT** consolidated, inc.  
 ENGINEERS ARCHITECTS PLANNERS 3301 CAMPUS DRIVE, IRVINE, CALIFORNIA 92614-0714  
 [Signature]  
 5-15-75  
 PAUL H. BARRIOS R.C.E. 15857

MARK	REVISIONS	APPR.	DATE

CITY OF RIVERSIDE, CALIFORNIA  
 DEPARTMENT OF PUBLIC WORKS  
 APPROVED BY [Signature]  
 DIRECTOR OF PUBLIC WORKS  
 DATE 1/30/76

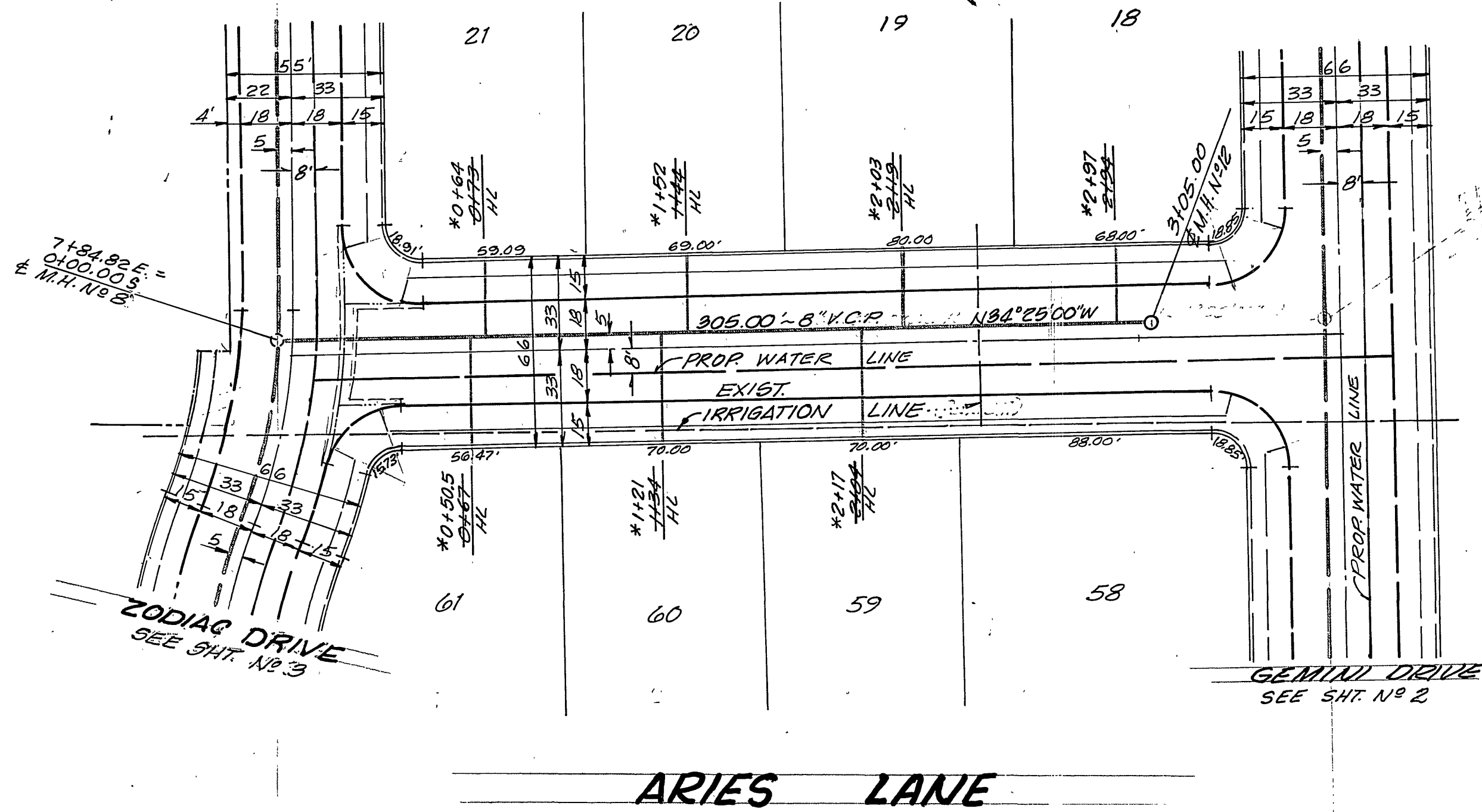
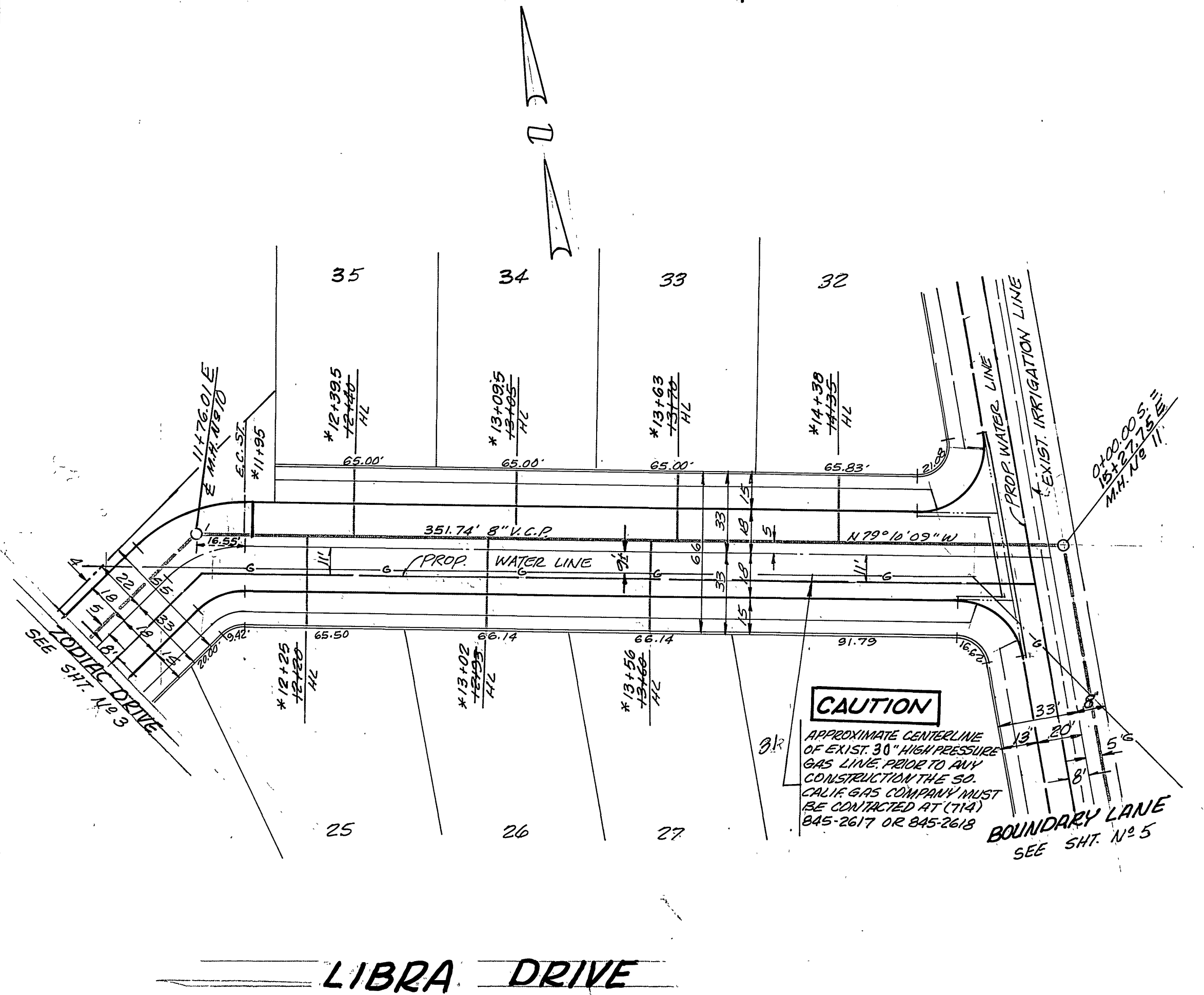
\*AS BUILT 6-77 UBT  
**SEWER PLAN AND PROFILE**  
**ZODIAC DRIVE**  
 FROM: CROSS AVE.  
 TO: 1176' 46" CROSS  
**TRACT N°4915**  
 PROJECT NO. S-1015  
 SHEET 3 OF 5  
 HORIZ. SCALE: 1" = 40'  
 VERT. SCALE: 1" = 4'





see Sht. No. 1 for General Notes

BENCH MARK: E-3-D  
 SET BY NAIL AND TAG IN CULVERT  
 HEADWALL ON N.W. SIDE OF VICTORIA  
 50' W'LY OF CROSS ST. - FB 739/64  
 ELEV. 829.204



LIBRA DRIVE

ARIES LANE

GAGE CANAL  
 BY: *[Signature]*  
 APPROVED BY: *[Signature]*  
 CHIEF PUBLIC UTILITIES ENGINEER - WATER DATE: 10-12-75

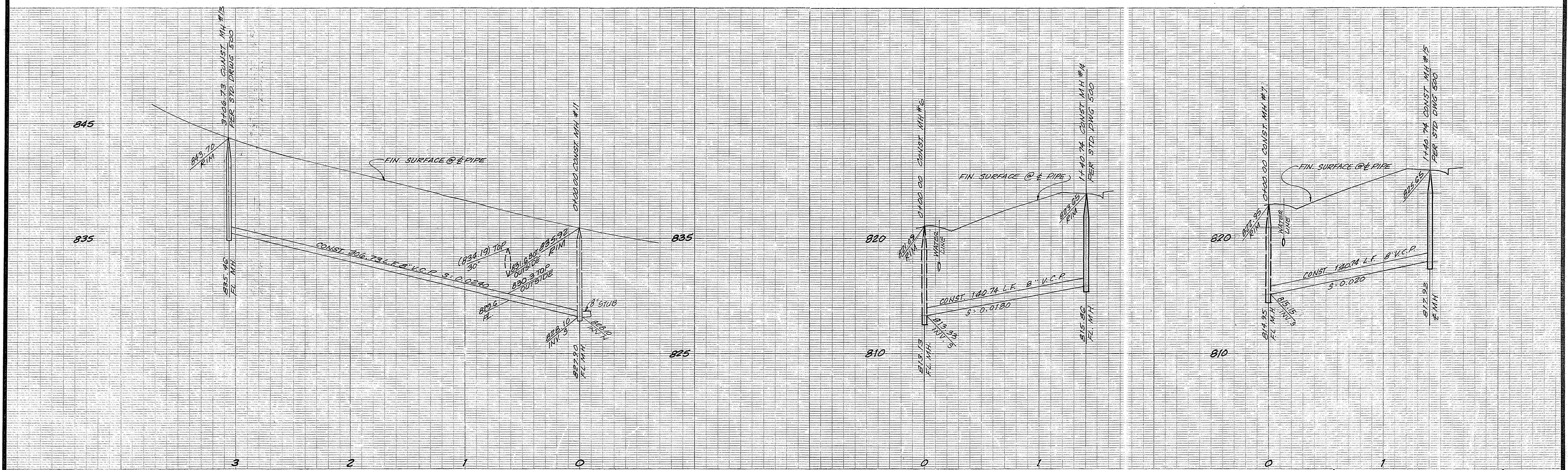
**VCM** Consolidated, Inc.  
 ENGINEERS, ARCHITECTS, PLANNERS, 2281 FARMER AVENUE, RIVERSIDE, CALIFORNIA 92503  
 PAUL H. BARRIOS P.C.E. 15857  
 DATE: 5-15-75

MARK	REVISIONS	APPR. DATE

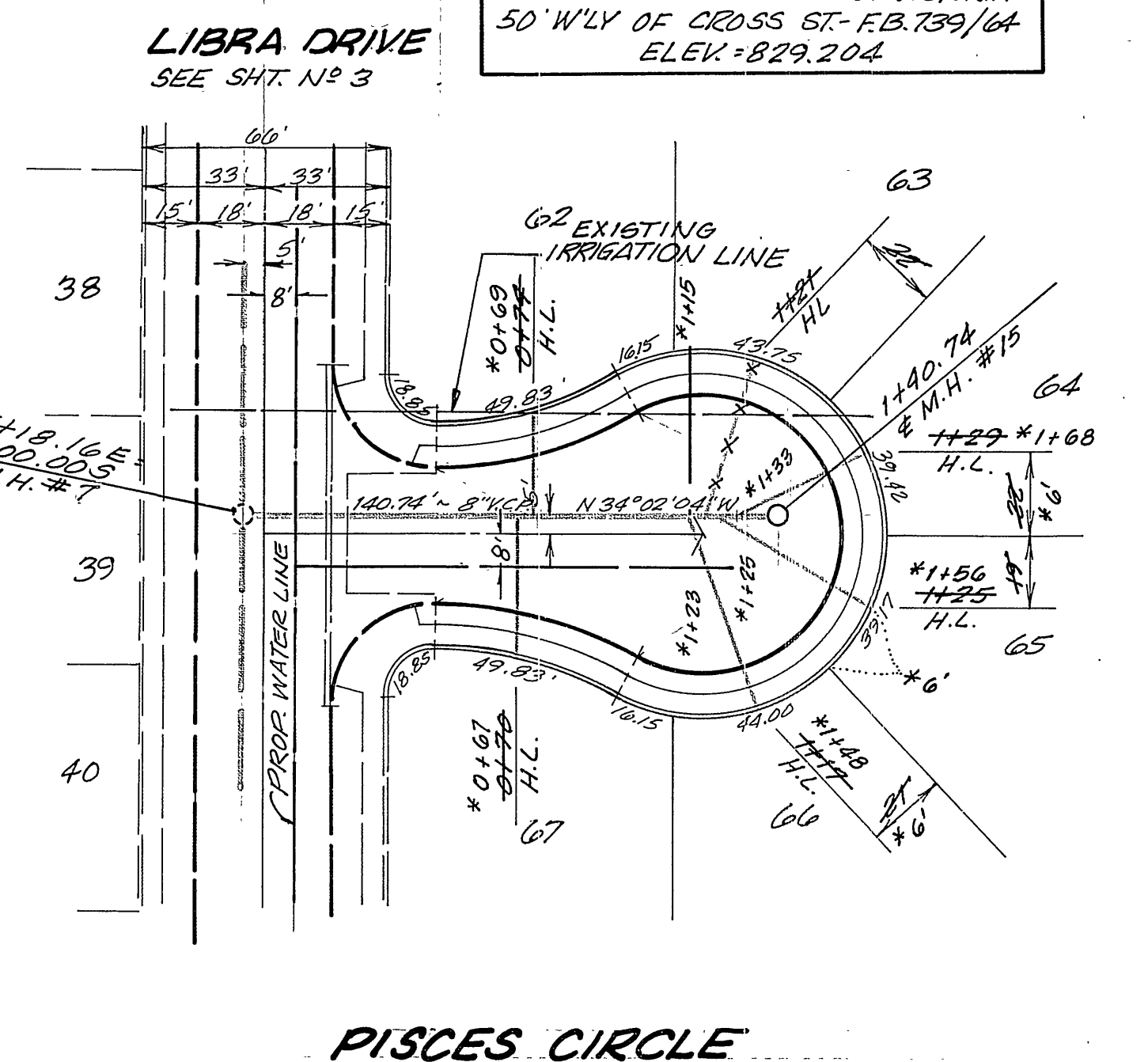
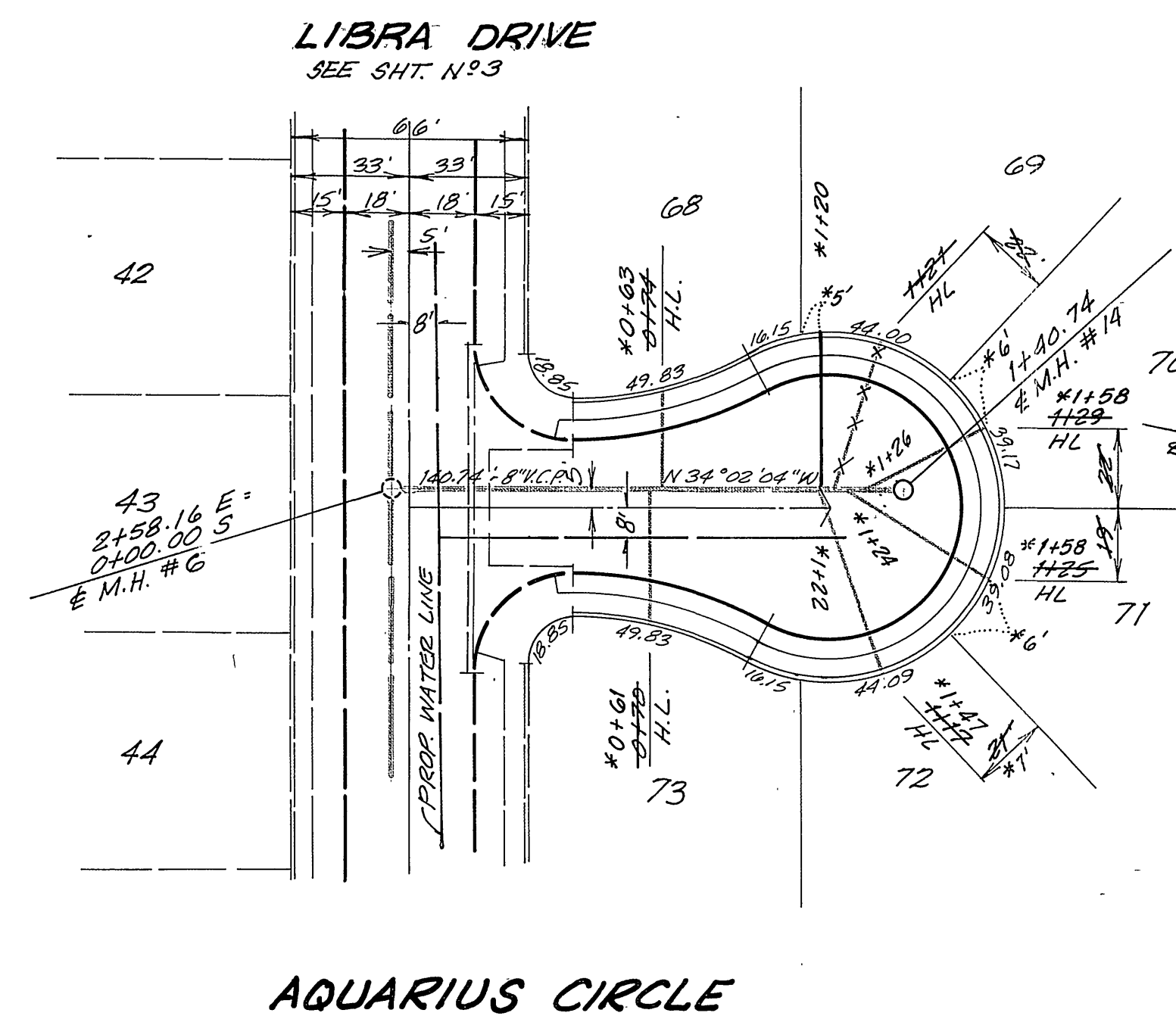
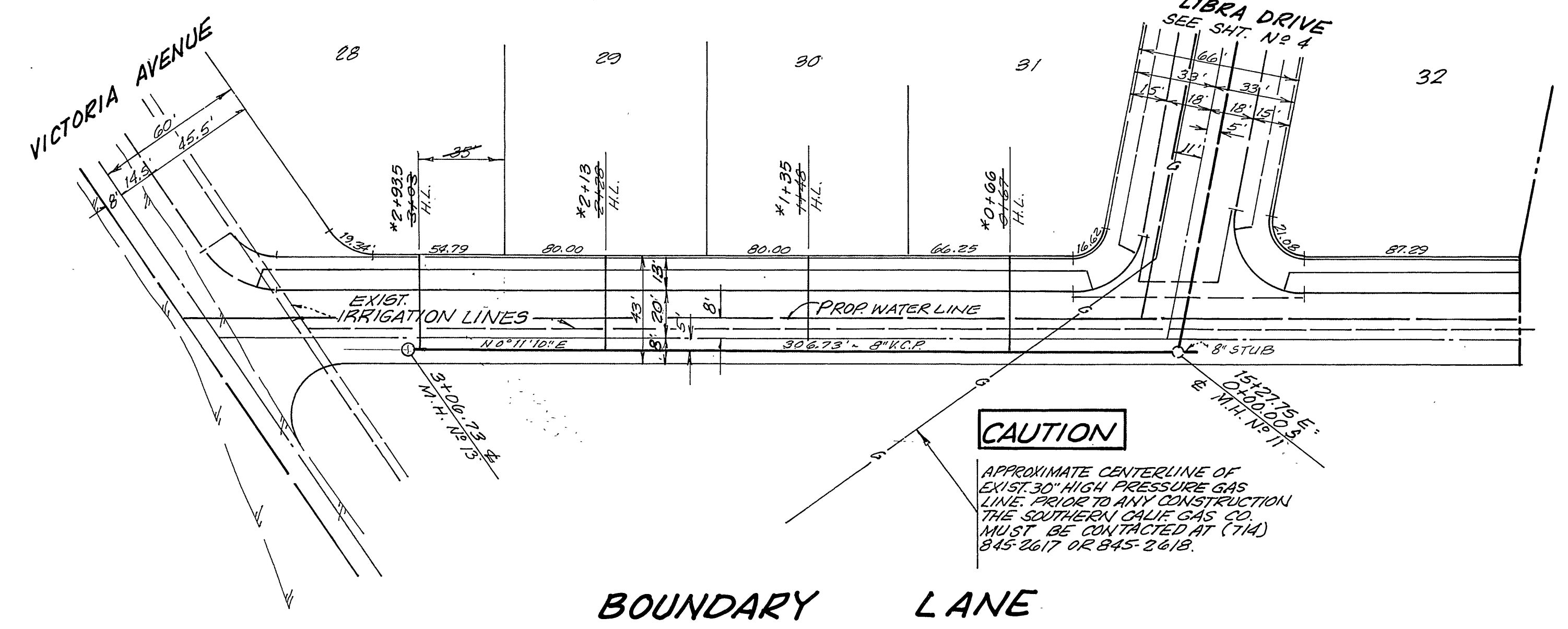
CITY OF RIVERSIDE, CALIFORNIA  
 DEPARTMENT OF PUBLIC WORKS  
 APPROVED BY: *[Signature]*  
 OFFICE ENGINEER  
 PARK DEPARTMENT  
 TRAFFIC DIVISION  
 ASSISTANT CITY ENG.  
 DATE: 1/30/76

\*AS BUILT 6-77 4RT  
**SEWER PLAN AND PROFILE**  
 LIBRA DRIVE FROM 17th ST. TO CROSS ST.  
 TO BOUNDARY LN.  
 ARIES LANE FROM ZODIAC DR.  
 TO GEMINI DR.  
**TRACT N°4915**  
 PROJECT NO. **S-1015**  
 SHEET **4** OF **5**  
 HORIZ. SCALE: 1" = 40' VERT. SCALE: 1" = 4'  
 FILE NO.





SEE SHEET NO 1 FOR GENERAL NOTES



BENCH MARK: E-3-D  
SET PK. NAIL AND TAG IN CULVERT HEADWALL ON NLY. SIDE OF VICTORIA 50' W'LY OF CROSS ST.-FB. 739/64 ELEV. = 829.204

GAGE CANAL  
BY: P. Kahare  
APPROVED BY: [Signature]  
CHIEF PUBLIC UTILITIES ENGINEER, WATER DATE: 10-17-75

**VTH** consolidated, inc.  
ENGINEERS, ARCHITECTS, PLANNERS 2201 CAMPUS DRIVE, IRVINE, CALIFORNIA 92614 (714) 833-2400  
PAUL H. BARRIOS R.C.E. 15857 DATE: 5-15-75

MARK	REVISIONS	APPR.	DATE

CITY OF RIVERSIDE, CALIFORNIA  
DEPARTMENT OF PUBLIC WORKS  
APPROVED BY: [Signature]  
DIRECTOR OF PUBLIC WORKS  
DATE: 1/30/76

\*AS BUILT 6-77 RPT  
SEWER PLAN AND PROFILE  
BOUNDARY LN. FROM VICTORIA AVE. TO LIBRA DR.  
AQUARIUS CIRCLE  
PISCES CIRCLE  
TRACT NO 4915  
PROJECT NO. S-1015  
SHEET 5 OF 5  
HORIZ. SCALE: 1" = 40' VERT. SCALE: 1" = 4'  
FILE NO.