

750

740

730

750

740

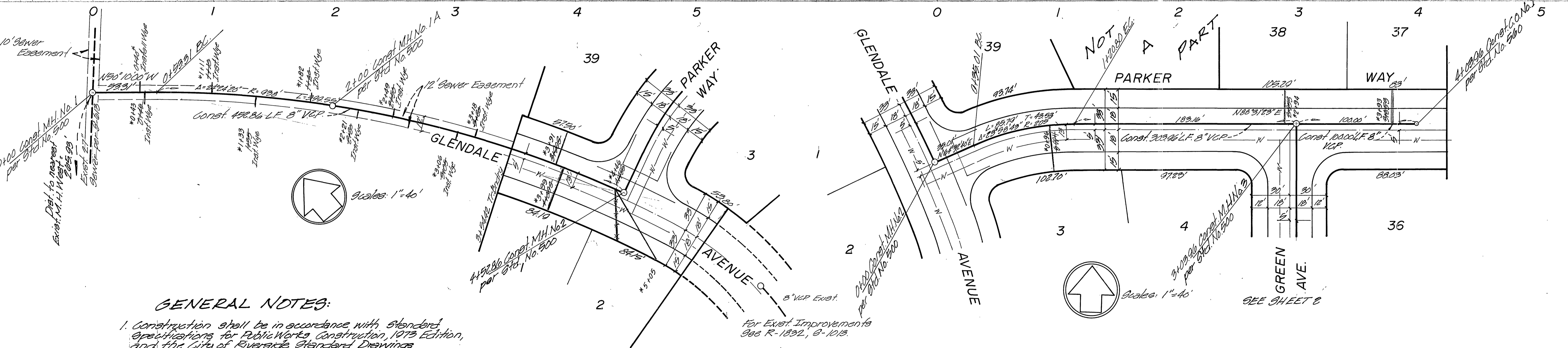
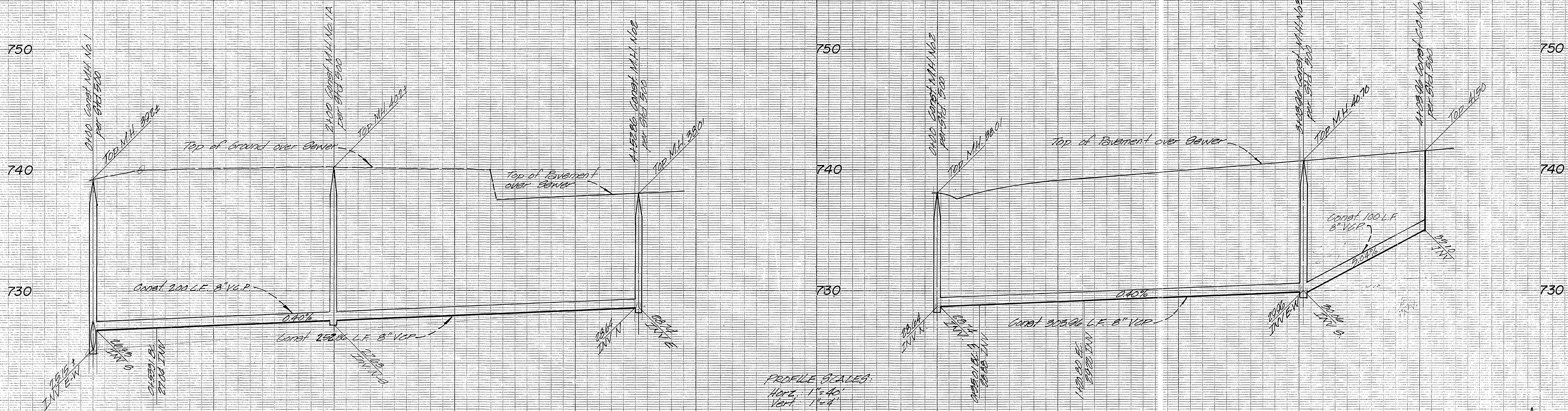
730

750

740

730

BENCHMARK:
PK. nail in center of Northeast curb
return @ Arlington & Green
Elev: 743.75 FB 704/41



GENERAL NOTES:

1. Construction shall be in accordance with Standard Specifications for Public Works Construction, 1973 Edition, and the City of Riverside Standard Drawings
2. It shall be the responsibility of the Contractor to clear the Right of Way in accordance with the provisions of Law as it affects each utility, irrigation line appurtenances and at no cost to the City.
3. Laterals to be 4" and extended to property line.
4. Prior to construction of Sewer, the Contractor is to expose existing sewer and contact the Engineer for verification of existing elevations.
5. The Sewer Contractor is to adjust Manhole covers to final grade after paving is completed.
6. A plug shall be installed and will remain in place where the new Sewer connects with the existing Sewer until such time that the new sewer is accepted by the City.

APPROVED BY:

 Philip E. Brown 11-26-75
 Chief Water Utility Engineer

MAXWELL, BROWN & MULLINS
 planning engineering surveying
 SAN BERNARDINO, CALIFORNIA
 PHILIP E. BROWN C.E. 18679
 DATE 11/27/75

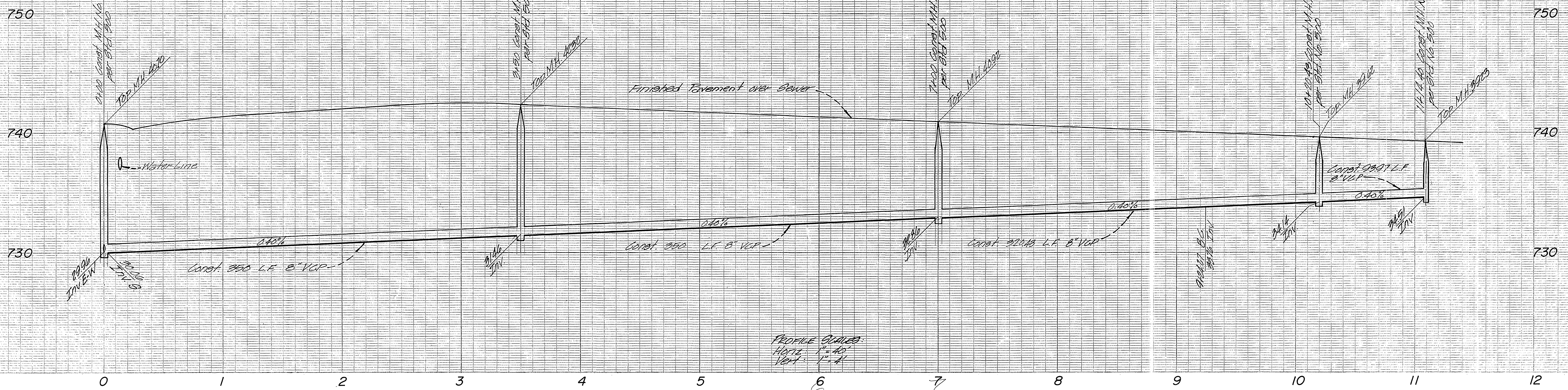
I.O.	
F.B.	
CHECKED BY:	
DRAWN BY:	
DESIGNED BY:	
DRAWN BY:	
CHECKED BY:	

CITY OF RIVERSIDE, CALIFORNIA
 DEPARTMENT OF PUBLIC WORKS
 APPROVED BY:
 William S. Gardner
 DIRECTOR OF PUBLIC WORKS
 DATE 12/2/75

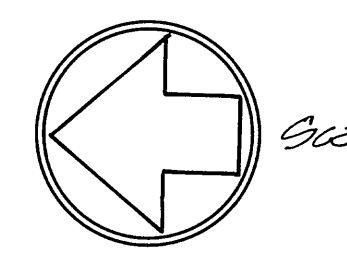
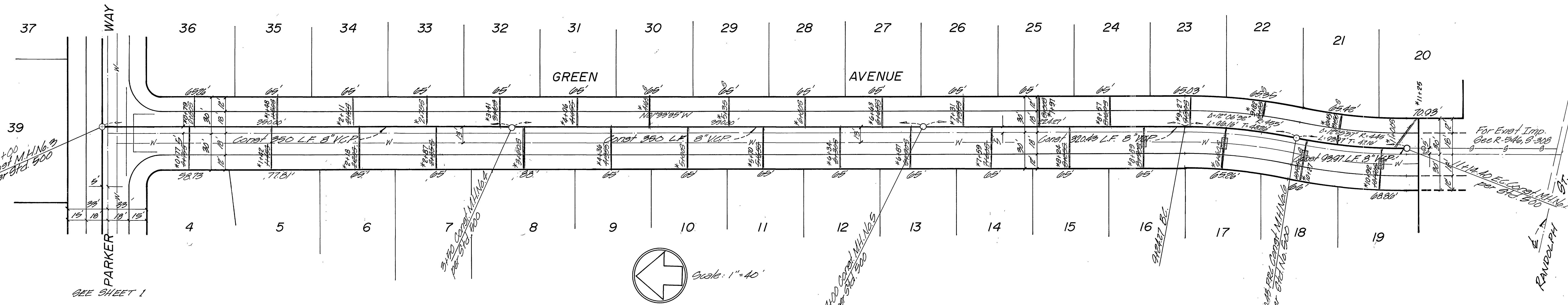
SEWER PLANS
TRACT 5104-4
 GLENDALE AVENUE
 PARKER WAY
 PROJECT NO. S-1017
 SHEET 1 OF 2
 HORIZ. SCALE: 1"=40' VERT. SCALE: 1"=4'

*AS BUILT 8-76 KPT

BENCH MARK:
 PK nail in center of Northeast curb
 return to Arlington & Great
 Elev. 750.03 FB 70441



PROFILE GRADES:
 HORIZ. 1" = 40'
 VERT. 1" = 1'



Scale: 1" = 40'

NOTE: See Sheet 1 for General Notes.

SPECIAL NOTE
 For Lots 16, 17, 18 & 19, enclose sewer lateral
 4.5' each side of water main crossing with
 Type "C" concrete encasement as per Public
 Utility Dig CND-028

APPROVED BY Phil E. Brown C.E. 18679 DATE 6/27/75		MAXWELL, BROWN & MULLINS planning engineering surveying SAN BERNARDINO, CALIFORNIA		J.O. F.B. CHECKED BY: DRAWN BY: DESIGNED BY:		CITY OF RIVERSIDE, CALIFORNIA DEPARTMENT OF PUBLIC WORKS PARK DEPARTMENT TRAFFIC DIVISION ASSISTANT CITY ENG.		*AS BUILT 8-76 RPT SEWER PLANS TRACT 5104-4 GREEN AVENUE HORIZ. SCALE: 1" = 40' VERT. SCALE: 1" = 4'		PROJECT NO. S-1017 SHEET 2 OF 2 FILE NO.	
---	--	---	--	--	--	---	--	--	--	--	--