

BENCH MARK:
 CITY B.M. E-4-B BRASS DISC IN GARDED
 INTERSECTION OF CENTERS LINE INTERSECTION
 OF VAN BUREN BLVD. AND VICTORIA AVE.
 ELEV. 881.95

- GENERAL NOTES**
1. It shall be the responsibility of the contractor to clear the right of way in accordance with the provisions of law as it affects each utility including irrigation lines and appurtenances and at no cost to the city.
 2. Construction shall be in accordance with the City of Riverside, Dept. Public Works, Standard Drawings, and the Standard Specifications for Public Works Construction, 1973 Edition.
 3. Location of laterals to be determined in the field at the direction of the owner. Avoid conflict with proposed and/or existing facilities.
 4. Contractor is to verify existing sewer elevation prior to construction.
 5. The sewer contractor shall adjust manholes to final grade after paving is completed.
 6. A plug shall be installed and will remain in place where the new sewer connects with the existing sewer until the new sewer is accepted by the city.

- ① SEWER CURVE DATA
 4. 22°20'00"
 6. 500.00'
 4. 89.28'
- ②
 4. 20°05'34"
 6. 500.00'
 4. 78.25'

APPROVED BY:

 CHIEF ENGINEER
 DATE: 1-5-76

J. F. DAVIDSON ASSOCIATES
 CIVIL ENGINEERS - SURVEYORS - PLANNERS
 RIVERSIDE, CALIFORNIA

APPROVED BY: DATE: 1-29-75
 R.E. No. 13653

REV. SWR GRDS CALLE SAUSALITO
 REVISIONS: _____
 APPR. DATE: _____
 DESIGNED BY: _____ DRAWN BY: _____ CHECKED BY: B.M.

CITY OF RIVERSIDE, CALIFORNIA
DEPARTMENT OF PUBLIC WORKS

APPROVED BY: DATE: 1/17/76
 OFFICE ENGINEER

TRAFFIC DIVISION
 ASSISTANT CITY ENG.

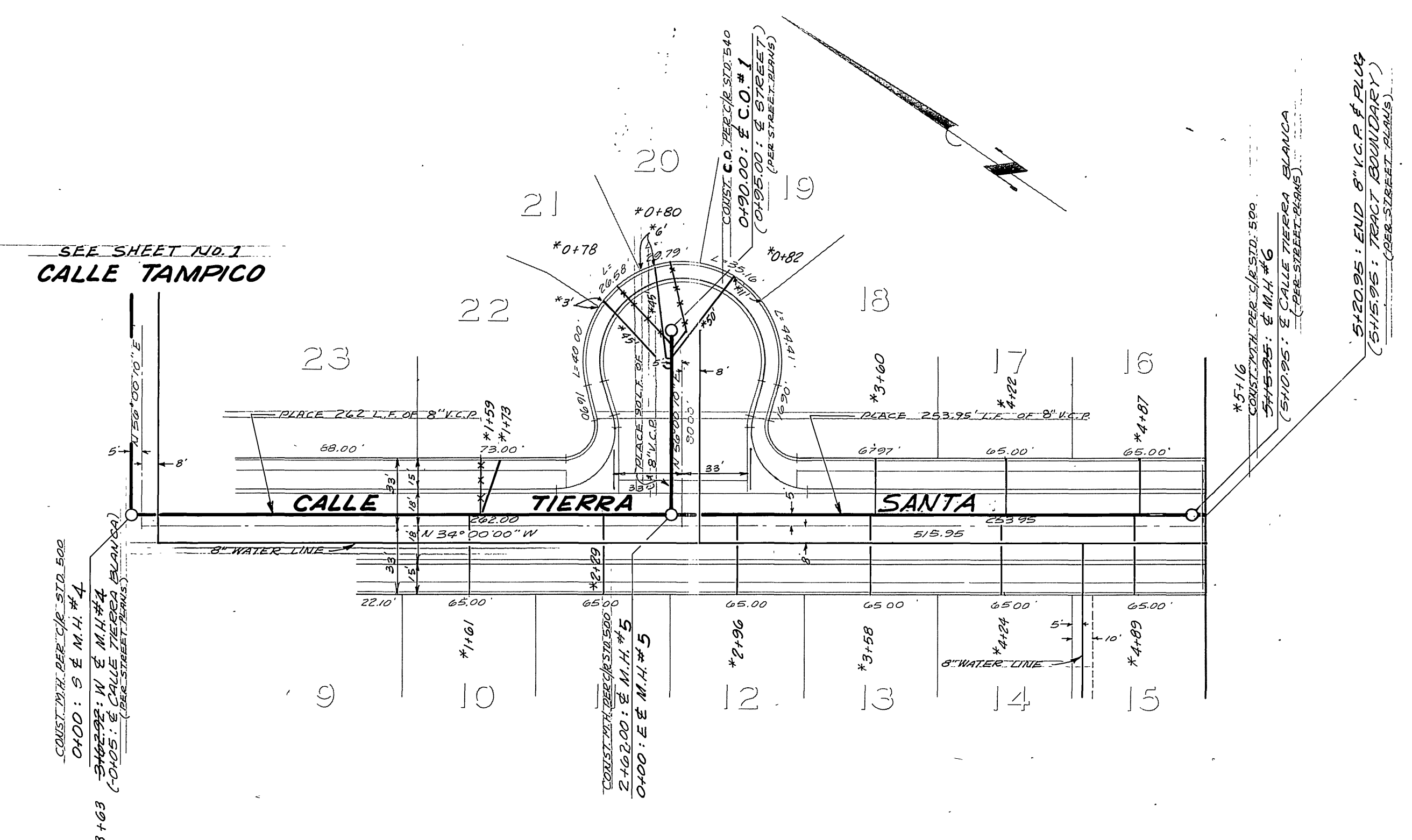
SEWER PLAN AND PROFILE
TRACT 6622
CALLE SAUSALITO
CALLE TAMPICO

PROJECT NO. **S-1018**
 SHEET **1** OF **2**
 FILE NO. **4491**

HORIZ. SCALE: 1" = 50'
 VERT. SCALE: 1" = 5'



BENCH MARK:
 CITY B.M. E-4 3 BRASS DISC IN CAPPED
 MONUMENT AT CENTER LINE INTERSECTION
 OF VAN BUREN BLVD AND VICTORIA AVE.
 ELEV. 881.95



* AS BUILT 8-76 KPT

APPROVED BY:
Walter Wilson 15-76
 CHIEF P.E. ENG. DATE

J. F. DAVIDSON ASSOCIATES
 CIVIL ENGINEERS - SURVEYORS - PLANNERS
 RIVERSIDE, CALIFORNIA
 APPROVED BY: *Robert S. Gappa* DATE 11-29-75
 R.E. No. 13259

MARK	REVISIONS	APPR.	DATE

CITY OF RIVERSIDE, CALIFORNIA
 DEPARTMENT OF PUBLIC WORKS
 APPROVED BY: *Smart*
 OFFICE ENGINEER DATE 11/17/75
 PARK DEPARTMENT
 TRAFFIC DIVISION
 ASSISTANT CITY ENG. DATE 1-12-76

SEWER PLAN AND PROFILE
 TRACT 6622
 CALLE TIERRA SANTA

PROJECT NO. S-1018
 SHEET 2 OF 2
 FILE NO. 4491