

SEWER PLAN INDEX MAP

GENERAL SEWER NOTES

1. CONSTRUCTION SHALL BE IN ACCORDANCE WITH THE STANDARD SPECIFICATIONS FOR PUBLIC WORKS CONSTRUCTION, 1973 EDITION, AND CITY OF RIVERSIDE STANDARD DRAWINGS.
2. IT SHALL BE THE RESPONSIBILITY OF THE CONTRACTOR TO CLEAR THE RIGHT OF WAY IN ACCORDANCE WITH THE PROVISIONS OF THE LAW AS IT AFFECTS EACH UTILITY INCLUDING IRRIGATION LINES AND APPURTENANCES AND AT NO COST TO THE CITY.
3. THE PIPE SHALL BE BEDDED PER CASE I, STANDARD DRAWING NO 452.
4. LOCATION OF WYES AND LATERALS TO BE DETERMINED AT THE TIME OF CONSTRUCTION AT THE DIRECTION OF THE OWNER.
5. ALL STUBS AND LATERALS TO BE CONSTRUCTED PER STANDARD DRAWING NO 562. STUBS SHALL BE PLUGGED AND CHAFED.
6. MANHOLE FRAMES AND COVERS TO BE SET TO FINISH GRADE BY THE SEWER CONTRACTOR AFTER THE FINAL PAVING OF STREETS.
7. LATERALS TO BE 4" VCP AND EXTENDED TO THE PROPERTY LINE.
8. A PLUG SHALL BE INSTALLED AND WILL REMAIN IN PLACE WHERE THE NEW SEWER CONNECTS TO THE EXISTING SEWER UNTIL THE NEW SEWER IS ACCEPTED BY THE CITY.

NOTICE TO CONTRACTOR

THE EXISTENCE AND LOCATION OF ANY UNDERGROUND UTILITY PIPES OR STRUCTURES SHOWN ON THESE PLANS ARE OBTAINED BY A SEARCH OF THE AVAILABLE RECORDS TO THE BEST OF OUR KNOWLEDGE, THERE ARE NO EXISTING UTILITIES EXCEPT AS SHOWN ON THESE PLANS.

THE CONTRACTOR IS REQUIRED TO TAKE DUE PRECAUTIONARY MEASURES TO PROTECT THE UTILITY LINES SHOWN AND ANY OTHER LINES NOT OF RECORD OR NOT SHOWN ON THESE PLANS.

BENCH MARK

ELEVATION 733.31- CITY OF RIVERSIDE G.S.D. TOP OF BRASS DISC IN WELL AT A.P. IN ARLINGTON AVENUE, 500'± EAST OF LAKE ST.

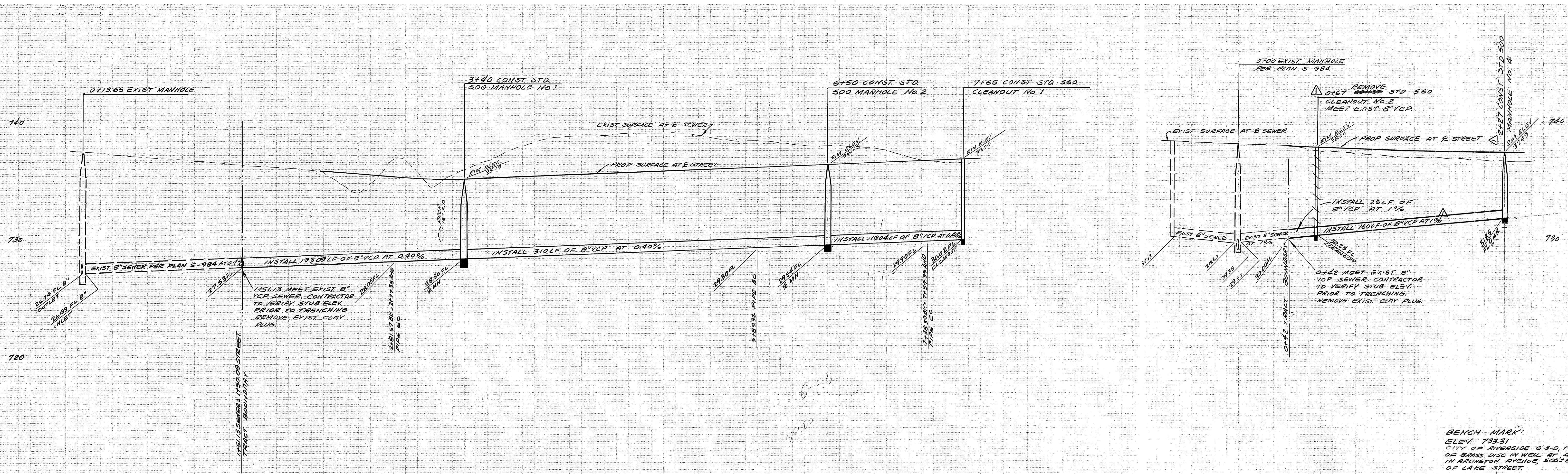
*AS BUILT 8-76 KPT

REVISION (Δ) APPROVED BY <i>W. J. ...</i> CHIEF UTILITIES ENGINEER, WATER	DATE 4-13-76
APPROVED BY <i>W. J. ...</i> CHIEF WATER UTILITY ENGINEER	DATE 12-18-75
ALBERT A. WEBB ASSOCIATES CIVIL ENGINEERS RIVERSIDE, CALIFORNIA	
APPROVED BY <i>...</i> DATE 7-8-75 R.E. No. 21884	
W.O. 75-175 FOR HOME AND COUNTRY F.B.	

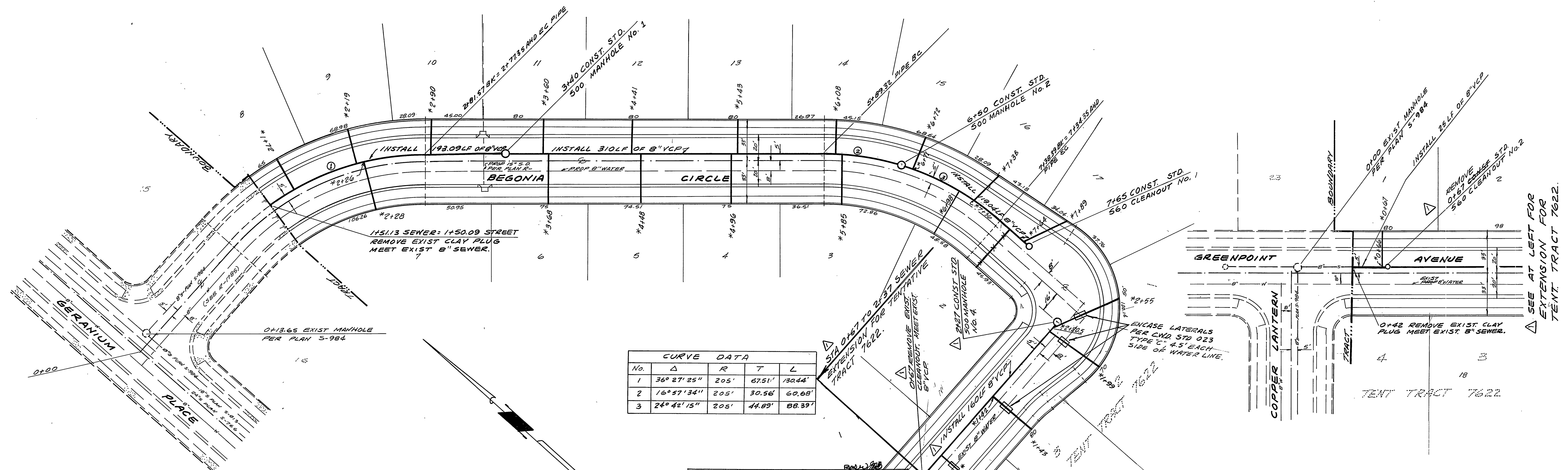
EXTENDED SEWER IN GREENPOINT	7/1/76
70' SERVICE LOTS 1-4 TRACT 5002	7/1/76
NO. 75-52	52-4-7-75 BA
MARK	REVISIONS
DESIGNED BY <i>...</i>	DRAWN BY <i>...</i>
CHECKED BY <i>...</i>	

CITY OF RIVERSIDE, CALIFORNIA PUBLIC WORKS DEPARTMENT		
APPROVED BY PRINCIPAL ENGINEER PARK DEPARTMENT	BY DATE <i>...</i> 7/1/76	APPROVED BY DIRECTOR OF PUBLIC WORKS
TRAFFIC DIVISION	CHIEF PUB. WKS. ENGR	DATE 7-7-76

SEWER PLAN TRACT 5002 INDEX MAP	ACCOUNT No. DRAWING NUMBER 5-1019 SHEET 1 OF 3 75-175B
SCALE: AS NOTED	



BENCH MARK
 ELEV. 733.51
 CITY OF RIVERSIDE G-3-D, TOP
 OF BRASS DISC IN WELL AT A.P.
 IN ARLINGTON AVENUE, 500' EAST
 OF LAKE STREET.



CURVE DATA				
No.	Δ	R	T	L
1	36° 27' 25"	205'	67.51'	130.44'
2	16° 57' 34"	205'	30.56'	60.68'
3	24° 42' 15"	205'	44.89'	88.39'

SEE SHEET NO. 1 FOR GENERAL SEWER NOTES

REVISION & APPROVED BY
Albert A. Webb 4-13-76
 CHIEF UTILITIES ENGINEER, WATER DEPT.
 APPROVED BY
John Wiley Hyler 12-18-75
 CHIEF WATER UTILITY ENGINEER

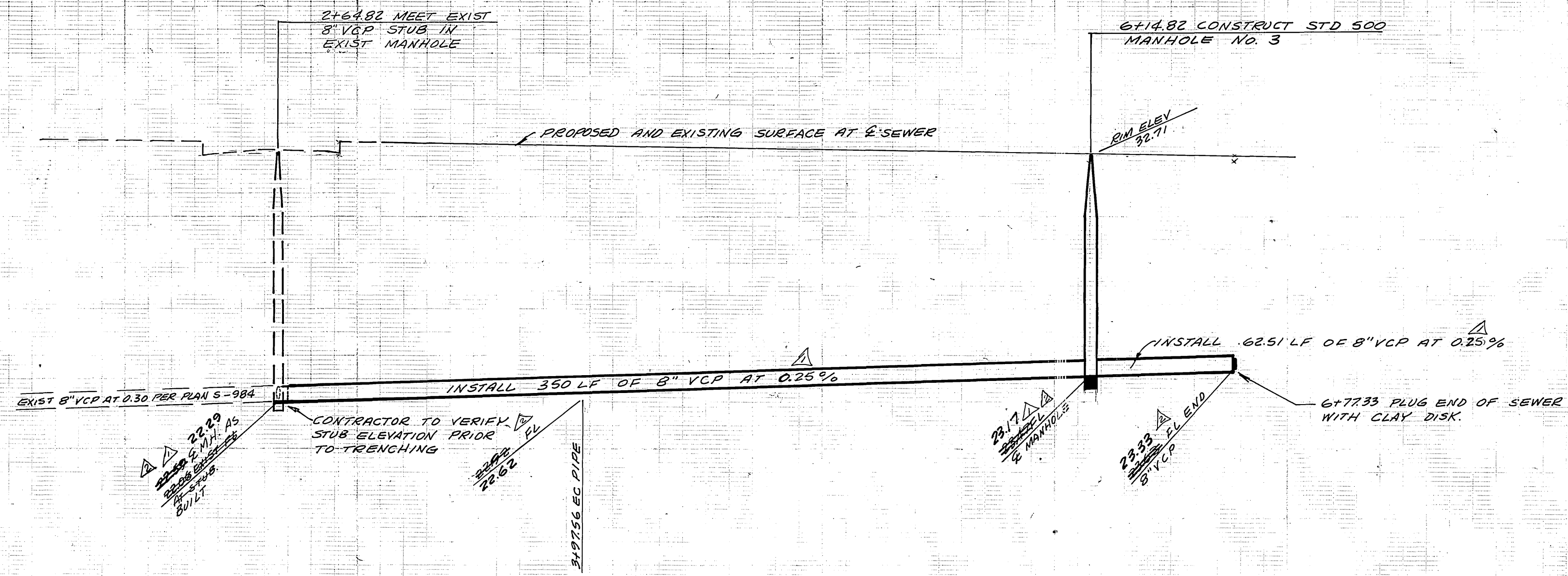
ALBERT A. WEBB ASSOCIATES
 CIVIL ENGINEERS
 RIVERSIDE, CALIFORNIA
 APPROVED BY *Albert A. Webb* DATE 7-8-75
 R.E. No. 21888

ADDED SEWER EXTENSION IN TRACT 7622 TO SERVE LOTS 18, 19, 20, 21, 22, 23, 24, 25, 26, 27, 28, 29, 30, 31, 32, 33, 34, 35, 36, 37, 38, 39, 40, 41, 42, 43, 44, 45, 46, 47, 48, 49, 50, 51, 52, 53, 54, 55, 56, 57, 58, 59, 60, 61, 62, 63, 64, 65, 66, 67, 68, 69, 70, 71, 72, 73, 74, 75, 76, 77, 78, 79, 80, 81, 82, 83, 84, 85, 86, 87, 88, 89, 90, 91, 92, 93, 94, 95, 96, 97, 98, 99, 100.

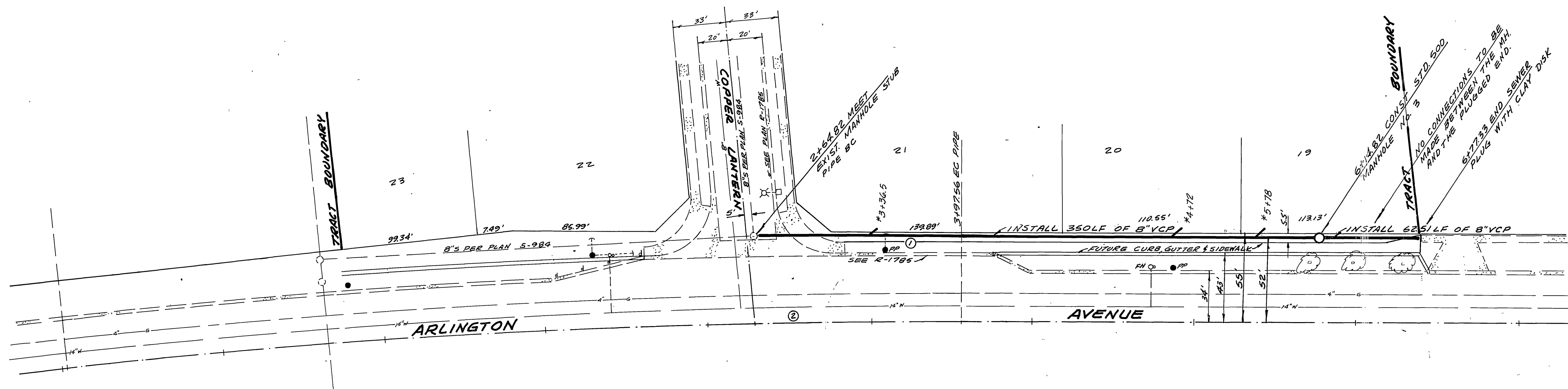
CITY OF RIVERSIDE, CALIFORNIA
 PUBLIC WORKS DEPARTMENT
 APPROVED BY *Albert A. Webb* DATE 7-8-75
 PRINCIPAL ENGINEER
 PARK DEPARTMENT
 TRAFFIC DIVISION
 CHIEF PUB. WKS. ENGR.

SEWER PLAN AND PROFILE
 TRACT No. 5002
 BEGONIA CIRCLE
 AND
 GREENPOINT AVENUE
 SCALE: HORIZ. 1" = 40' VERT. 1" = 4'

ACCOUNT No.
 DRAWING NUMBER
 S-1019
 SHEET 2 OF 3
 75-175 B



BENCH MARK:
ELEV. 733.31
CITY OF RIVERSIDE 6-3-D TOP
OF BARRIS DISC IN WELL AT A.P.
144 BURLINGTON AVENUE, 500' EAST
OF LARK STREET.



CURVE DATA				
NO.	Δ	R	T	L
①	10° 30' 19"	5052'	6637'	132.74'
②	6° 20' 00"	5000'	276.62'	552.69'

SEE SHEET No 1 FOR GENERAL SEWER NOTES.

APPROVED BY
Albert A. Webb 12-18-75
CHIEF WATER UTILITY ENGINEER DATE

ALBERT A. WEBB ASSOCIATES
CIVIL ENGINEERS
RIVERSIDE, CALIFORNIA

APPROVED BY *Albert A. Webb* DATE 7-15-75
R.E. No. 21884

W.O. 75-175 FOR HOME AND COUNTRY F.B. 1029

REVISIONS

1	REVISED GRADES SINCE M.H. 6114.82 CONSTRUCT STD 500 MANHOLE NO. 3	7/15/75
2	REVISED GRADES AS FOUND ON SITE AT COPPER LANTERN DRIVE	2-21-76

MARK REVISIONS APPR. DATE

CITY OF RIVERSIDE, CALIFORNIA
PUBLIC WORKS DEPARTMENT

APPROVED BY *Albert A. Webb* DATE 7-15-75
PRINCIPAL ENGINEER

APPROVED BY *Albert A. Webb* DATE 7-15-75
DIRECTOR OF PUBLIC WORKS

CHIEF PUB. WKS. ENGR. DATE 7-15-75

*AS BUILT 8-76 KPT

SEWER PLAN AND PROFILE
TRACT No. 5002
ARLINGTON AVENUE
AT
COPPER LANTERN DRIVE

SCALE: HORIZ. 1"=40' VERT. 1"=4'

ACCOUNT No.
DRAWING NUMBER
S-1019
SHEET 3 OF 3
75-175-B