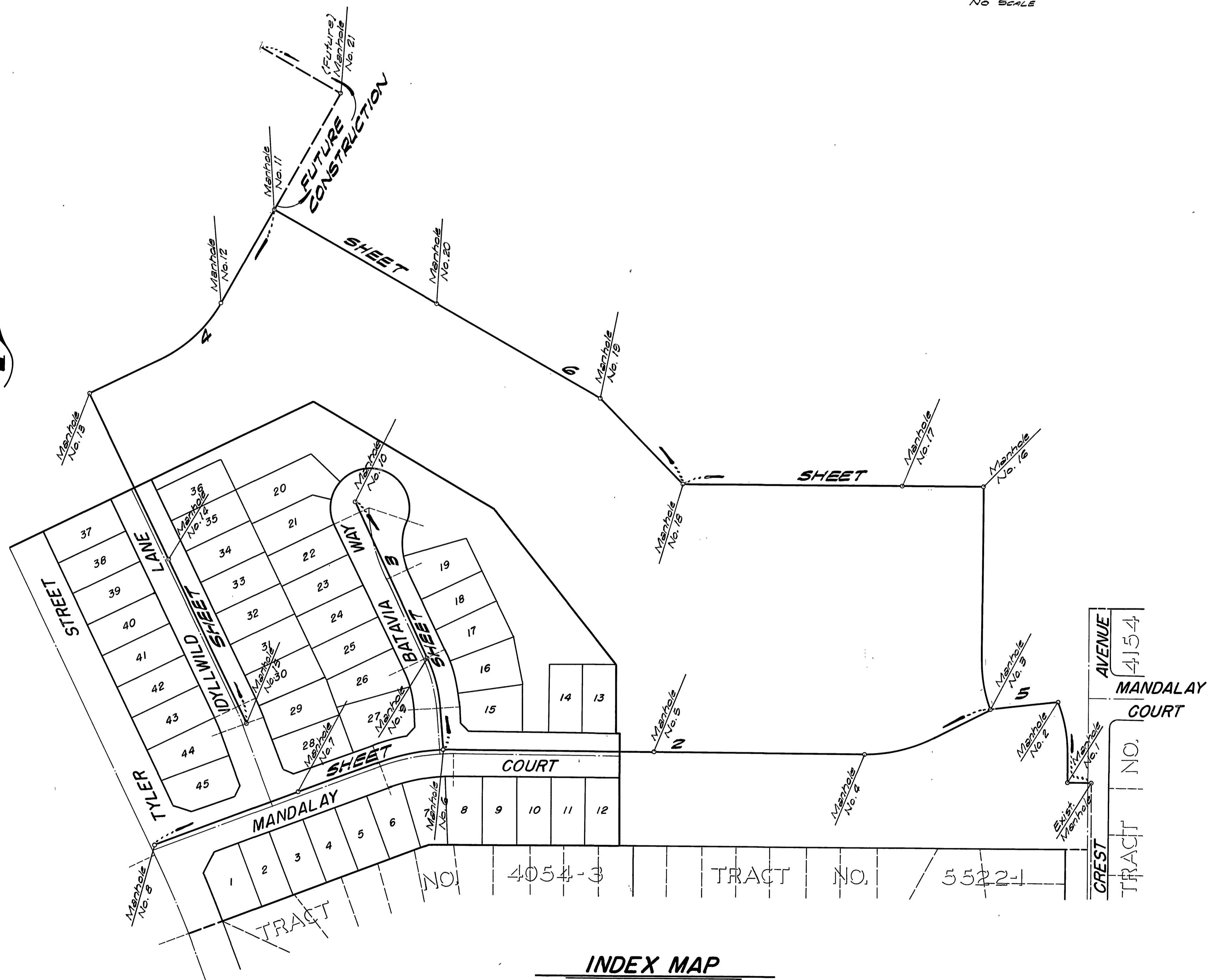


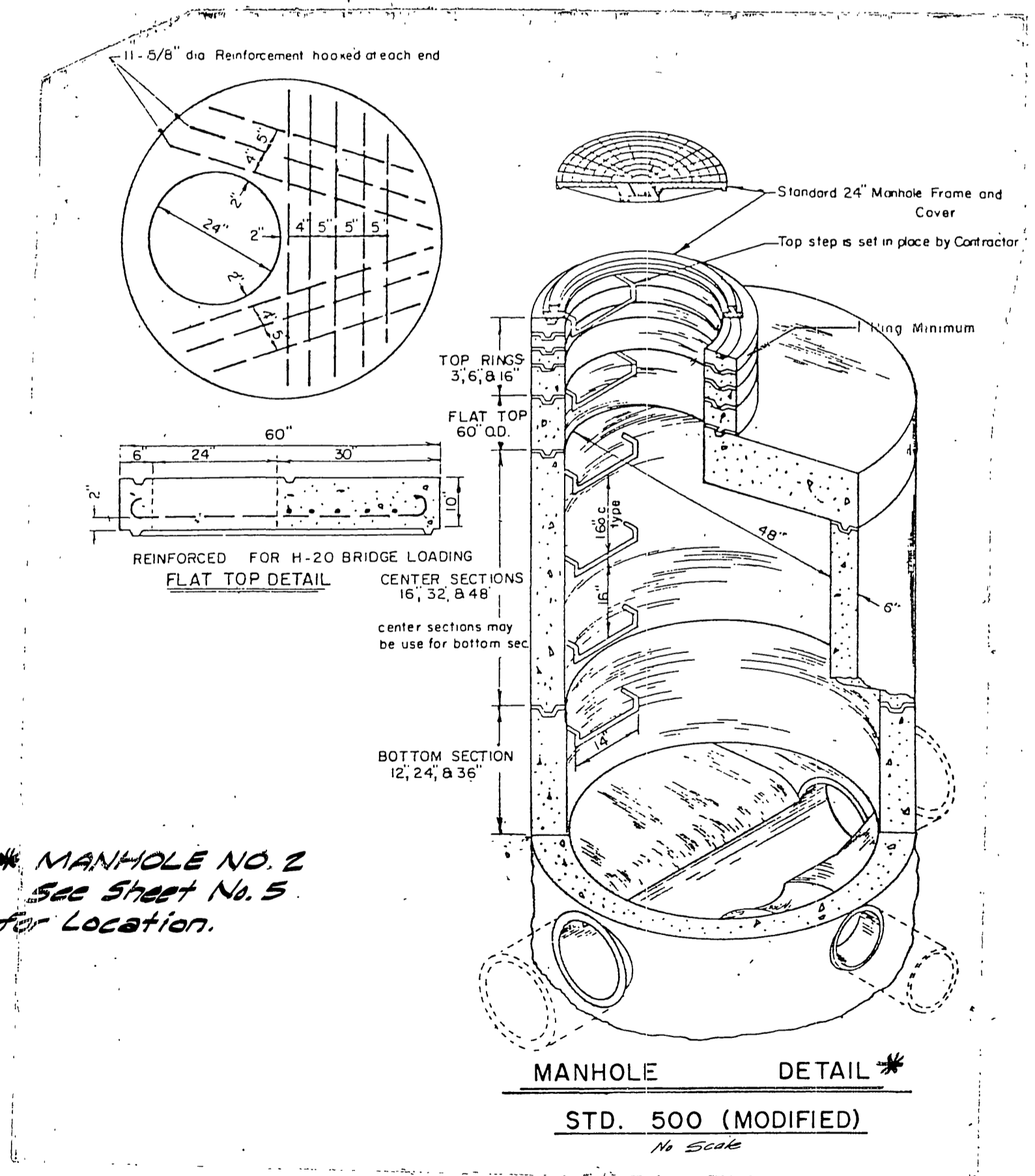
LOCATION MAP
NO SCALE

GENERAL NOTES:

1. Construction shall be in accordance with the Standard Specifications for Public Works Construction, 1973 Edition, and City of Riverside Standard Drawings.
2. Location of Proposed Wyes are shown with Stations, Final location to be determined at the direction of the owner, all Wyes shall be Plugged and Capped.
3. Prior to construction of sewer, Contractor shall expose existing Sewer and verify its existing elevation and location.
4. It shall be the responsibility of the Contractor to clear the right of way in accordance with the provisions of law as it affects each utility including irrigation lines and appurtenances, and at no cost to the City.
5. A plug shall be installed and will remain in place where the new sewer connects with the existing sewer until such time as the new sewer is accepted by the City.
6. All Manholes shall be constructed per City of Riverside Standard No. 500, except for Manhole No. 2, which shall be constructed per Detail hereon.
7. Where Fill Material is to be placed, a minimum of 6' of Depth above 6" of Sewer shall be reached and compaction completed before Sewer Pipe is installed, see Sheets No. 2 and 5 for Location.
8. Laterals are to be 4" V.C.P. & extended to property line.
9. Pipe shall be bedded per Case I, Standard Drawing No. 482.
10. Encase Sewer 4.5' each side of proposed water main crossings per Public Utilities Drawing C.W.D. 023, Type "C".
11. The sewer contractor shall adjust manholes to final grade after paving is completed.
12. All Sewer Easements to be graded per Grading Plan by others prior to the Construction of Sewers.



INDEX MAP
SCALE 1"=100'



* MANHOLE NO. 2
See Sheet No. 5
for Location.

BENCH MARK:
R.K. Nail in East Curb on Tyler Street,
on E Gaylord Avenue Produced, per City
of Riverside F.B. 106/1 Elevation 778.21.
(Adjusted to 1/2 Datum Elevation
775.09 in September 1973)

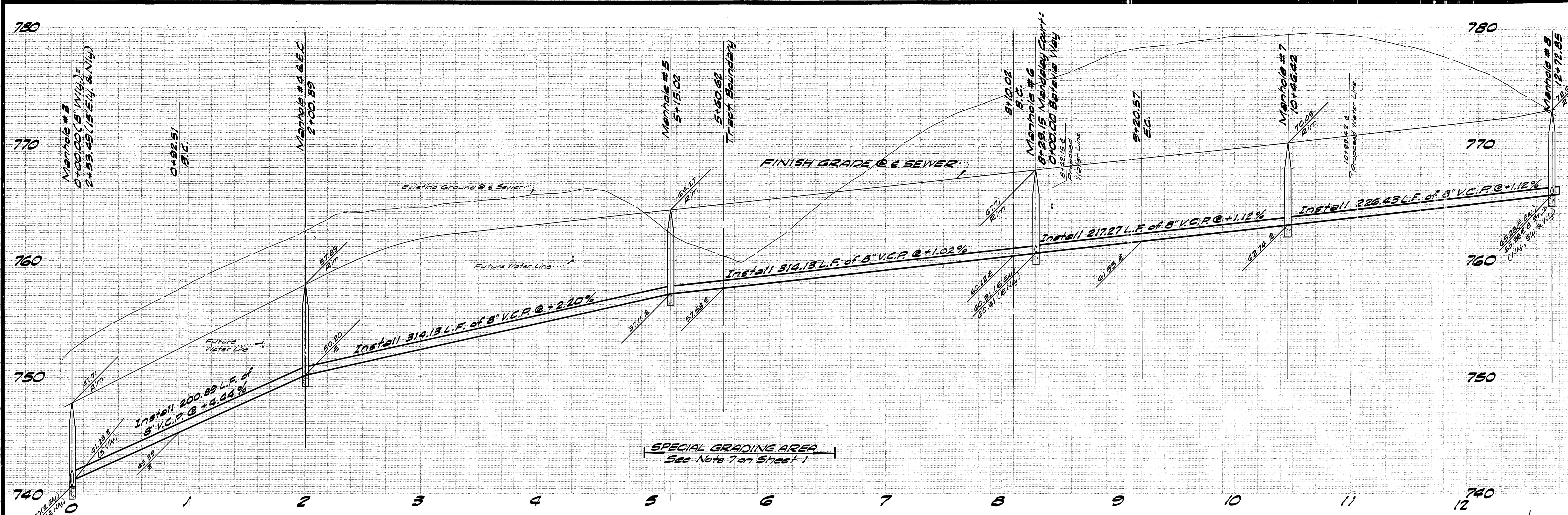
ALBERT A. WEBB ASSOCIATES
CIVIL ENGINEERS
RIVERSIDE, CALIFORNIA
APPROVED BY *L.A. Wainwright* DATE 2-3-75
R.E. No. 16056

MARK	REVISIONS	APPR.	DATE

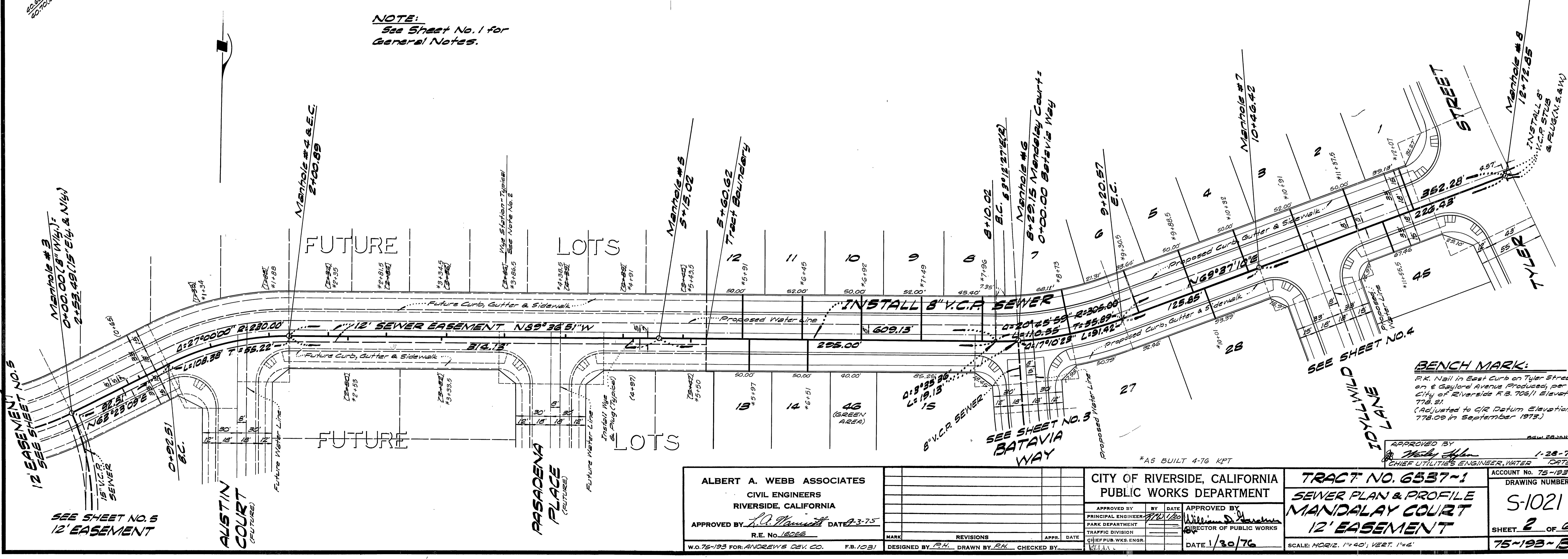
APPROVED BY *Wesley Johnson* DATE 1-28-76
CHIEF UTILITIES ENGINEER, WATER
CITY OF RIVERSIDE, CALIFORNIA
PUBLIC WORKS DEPARTMENT
APPROVED BY *William D. Hardner*
DIRECTOR OF PUBLIC WORKS
DATE 1/30/76

ACCOUNT No. 75-193
TRACT NO. 6537-1
SEWER PLAN & PROFILE
INDEX MAP
SCALE: AS SHOWN

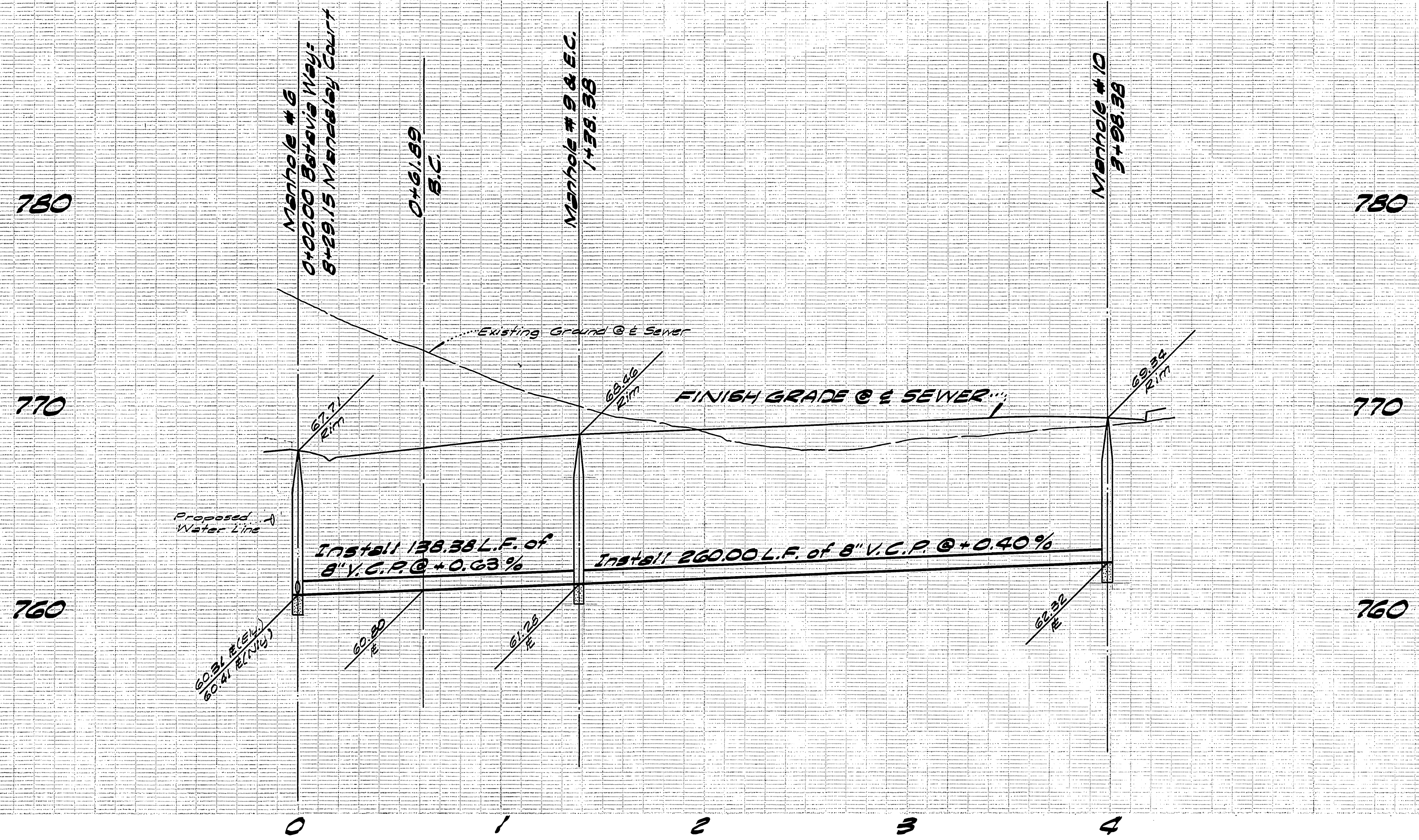
INDEXED No.
DRAWING NUMBER
S-1021
SHEET 1 OF 6
75-193-B



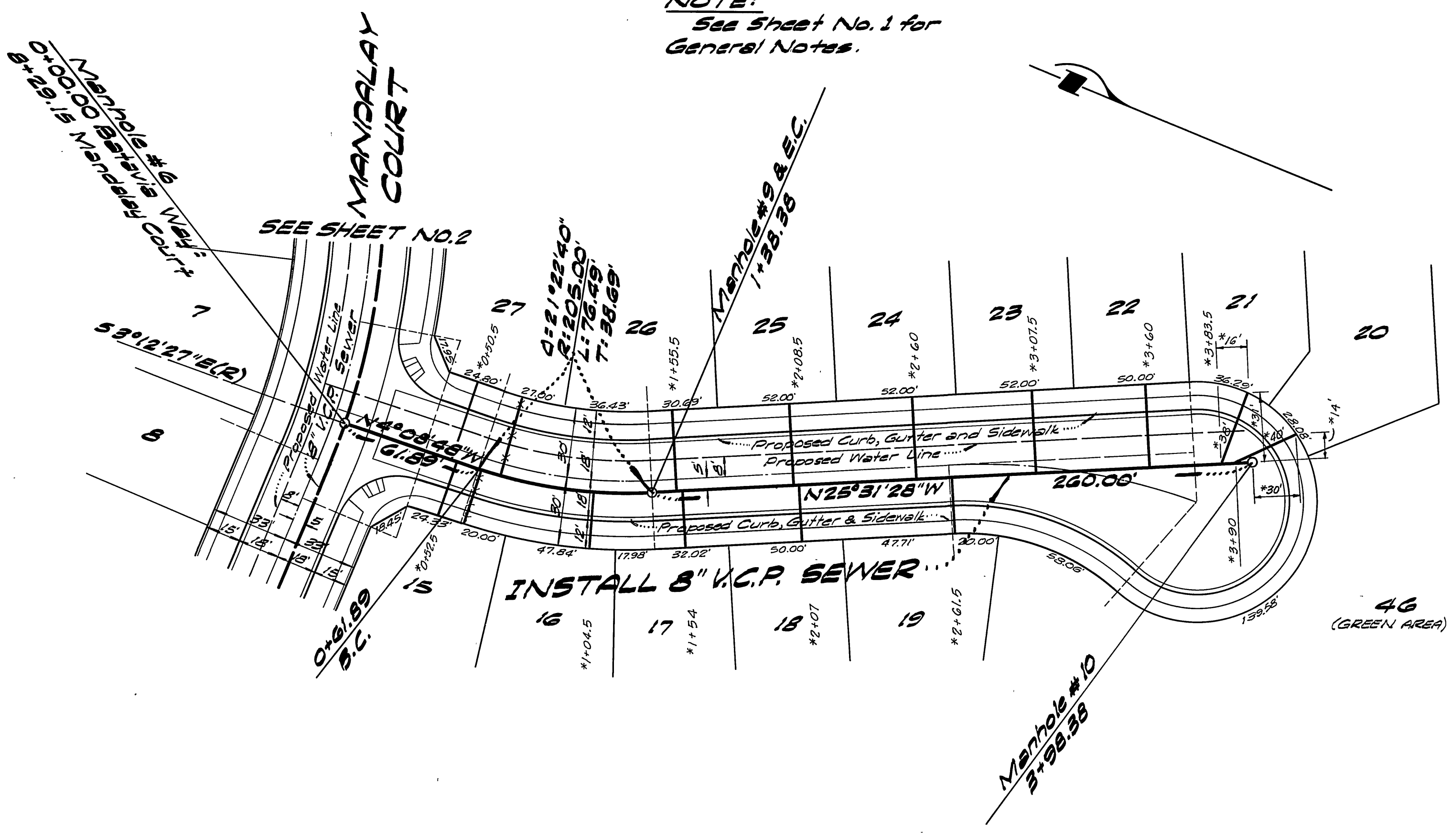
NOTE:
See Sheet No. 1 for
General Notes.



ALBERT A. WEBB ASSOCIATES CIVIL ENGINEERS RIVERSIDE, CALIFORNIA APPROVED BY <i>L.O. Mansueti</i> DATE 9-3-75 R.E. No. 18266		CITY OF RIVERSIDE, CALIFORNIA PUBLIC WORKS DEPARTMENT APPROVED BY <i>William D. ...</i> DATE 1/30/76 CHIEF PUB. WKS. ENGR.		TRACT NO. 6537-1 SEWER PLAN & PROFILE MANDALAY COURT 12' EASEMENT SCALE: HORIZ. 1"=40', VERT. 1"=4' ACCOUNT No. 75-193 DRAWING NUMBER S-1021 SHEET 2 OF 6 75-193-B	
W.O. 75-193 FOR ANDREW'S DEV. CO. F.B. 1031	DESIGNED BY <i>R.H.</i> DRAWN BY <i>R.H.</i> CHECKED BY	MARK REVISIONS APPR. DATE	DATE 1/30/76	APPROVED BY <i>...</i> DATE 1-28-76 CHIEF UTILITIES ENGINEER, WATER DEPT.	BENCH MARK: R.K. Nail in East Curb on Tyler Street, on E Gaylord Avenue (Produced, per City of Riverside F.B. 706/1 Elevation 778.81 (Adjusted to C/R Datum Elevation 778.09 in September 1975.)

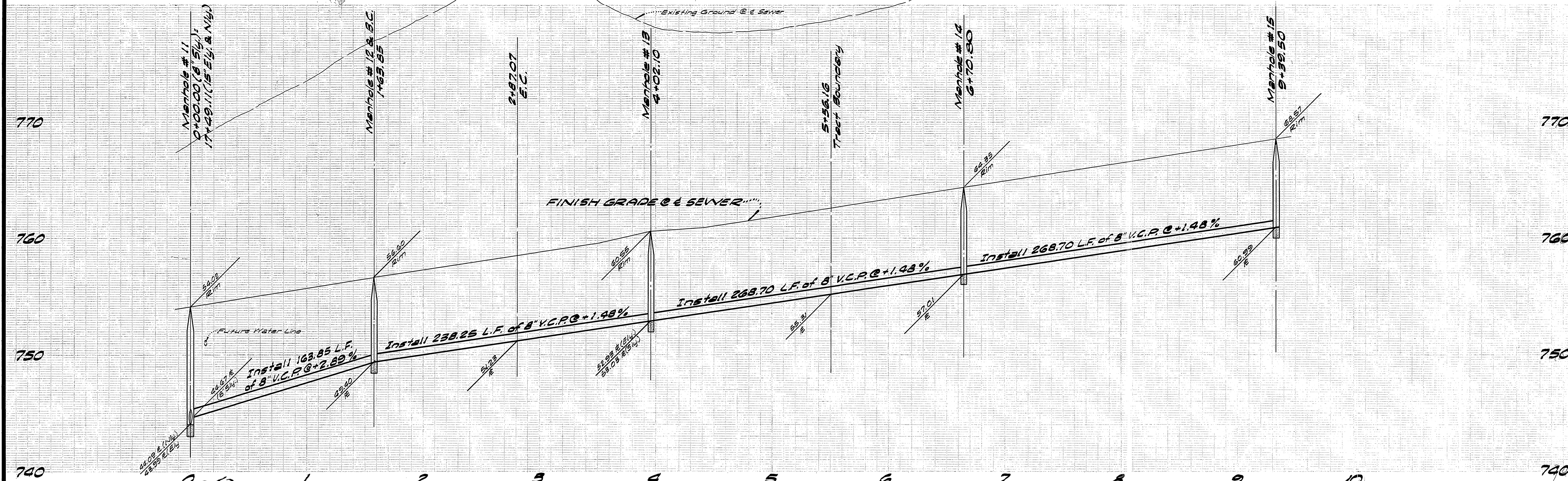


NOTE:
See Sheet No. 1 for
General Notes.

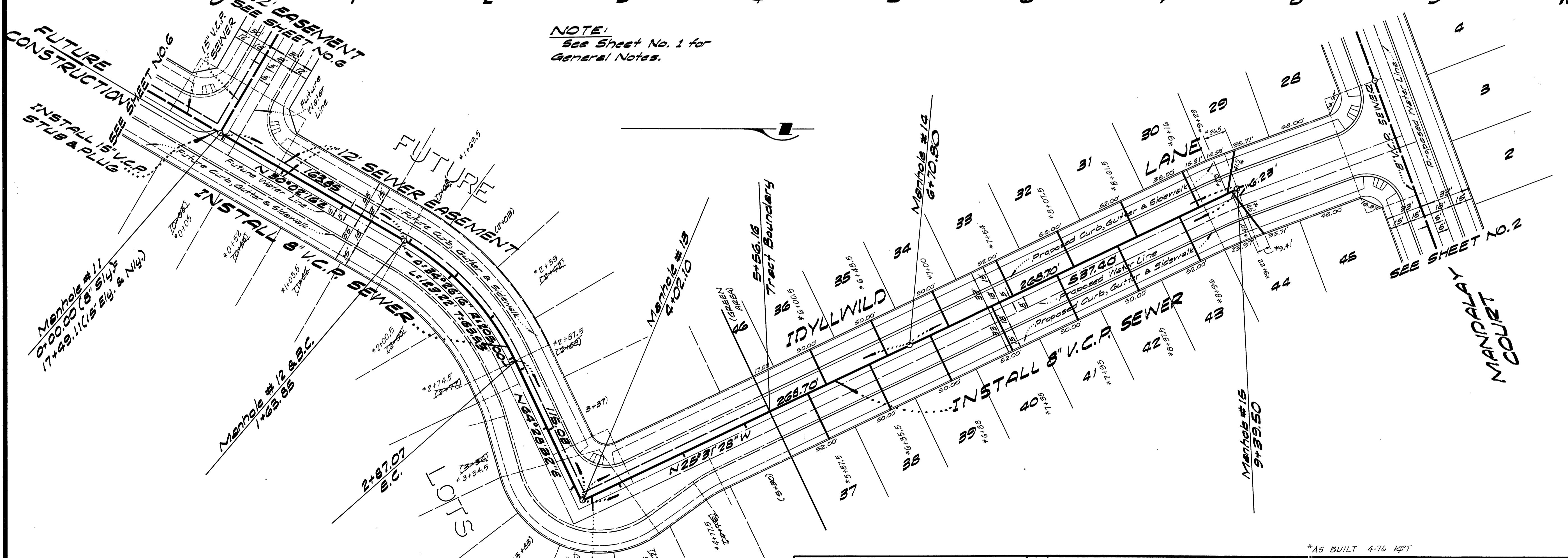


BENCH MARK:
R.K. Nail in East Curb on Tyler Street
on & Gaylord Avenue Produced, per
City of Riverside F.B. 706/1 Elevation
778.21.
(Adjusted to c/c Datum Elevation
778.00 in September 1973.)

ALBERT A. WEBB ASSOCIATES CIVIL ENGINEERS RIVERSIDE, CALIFORNIA APPROVED BY: <i>R.A. Wainwright</i> DATE: 2-3-76 R.E. No. 16056	*AS BUILT 4-76 KET		APPROVED BY: <i>William S. Hardin</i> DATE: 1-28-76 CHIEF UTILITIES ENGINEER, WATER		ACCOUNT No. 75-193
	CITY OF RIVERSIDE, CALIFORNIA PUBLIC WORKS DEPARTMENT		TRACT NO. 6537-1 SEWER PLAN & PROFILE BATAVIA WAY		DRAWING NUMBER 5-1021
W.O. 75-193 FOR: ANDREWS DEV. CO. F.B. 1031	DESIGNED BY: <i>R.H.</i> DRAWN BY: <i>R.H.</i> CHECKED BY:	REVISIONS APPR. DATE	APPROVED BY: <i>William S. Hardin</i> DIRECTOR OF PUBLIC WORKS DATE: 1/30/76	SHEET 3 OF 6	SCALE: HORIZ. 1"=40', VERT. 1"=4'

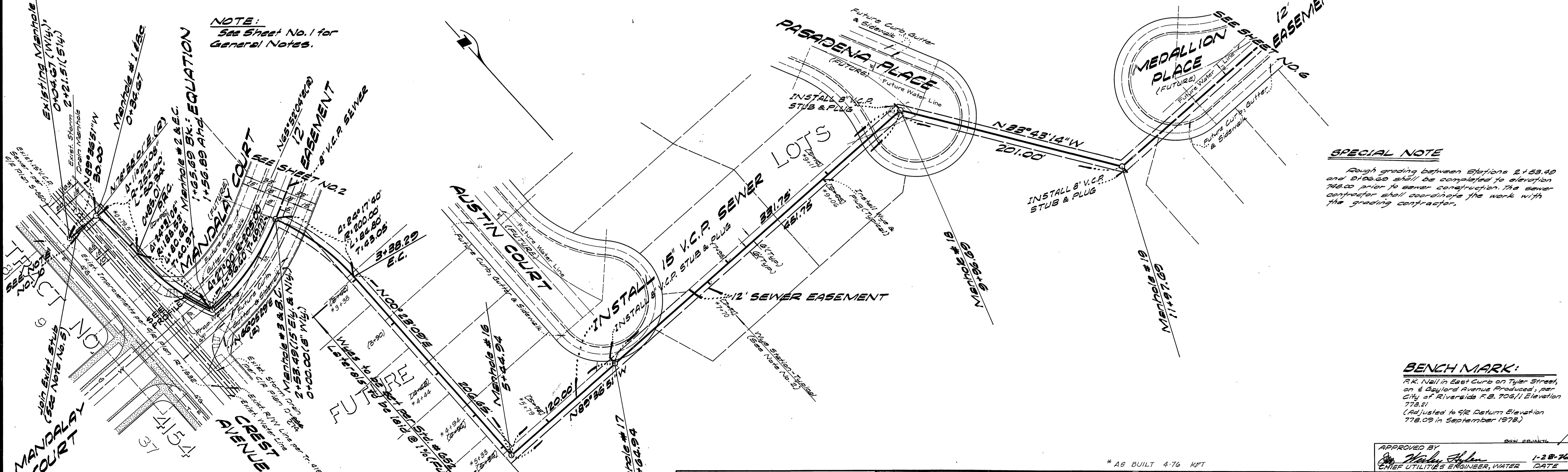
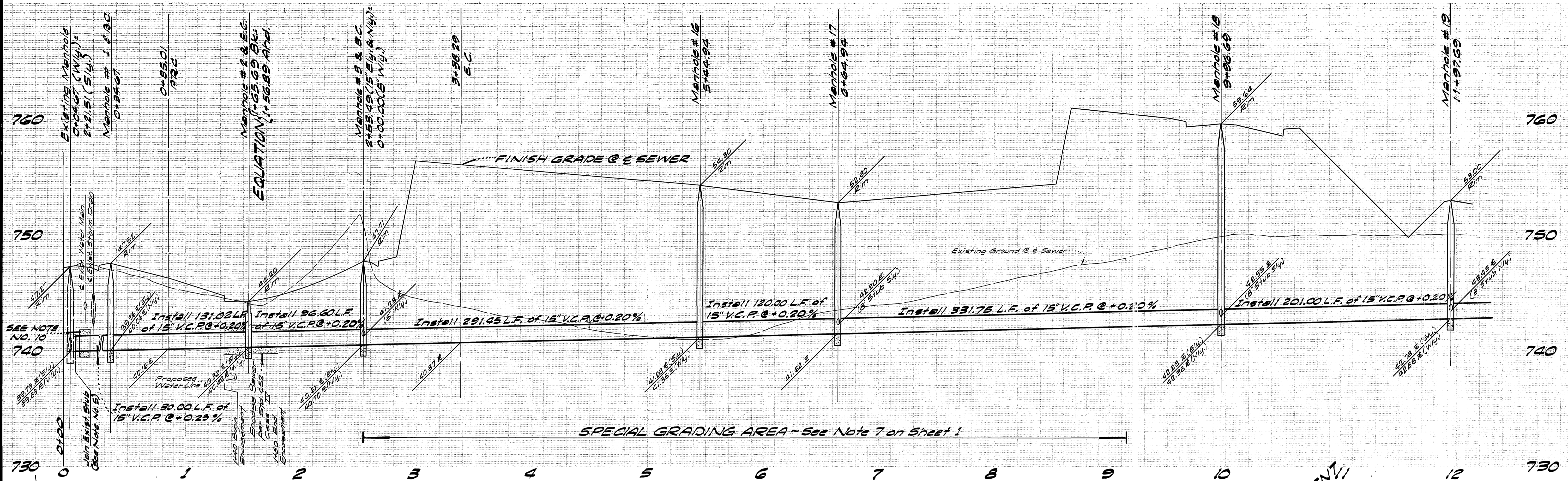


NOTE:
See Sheet No. 1 for
General Notes.



BENCH MARK:
R.K. Nail in East Curb on Tyler Street,
on E Gaylord Avenue Produced, per
City of Riverside R.B. 70611 Elevation
778.21
(Adjusted to C/I2 Datum Elevation
778.09 in September 1978)

ALBERT A. WEBB ASSOCIATES CIVIL ENGINEERS RIVERSIDE, CALIFORNIA APPROVED BY: <i>L.A. Warratt</i> DATE: 9-3-75 R.E. No. 16053 W.O. 75-193 FOR ANDREWS DEV. CO. F.B. 1031		CITY OF RIVERSIDE, CALIFORNIA PUBLIC WORKS DEPARTMENT APPROVED BY: <i>William S. Davidson</i> PARK DEPARTMENT TRAFFIC DIVISION CHIEF PUB. WKS. ENGR. DATE: 1/30/76		TRACT NO. 6537-1 SEWER PLAN & PROFILE IDYLLWILD LANE 12' EASEMENT SCALE: HORIZ. 1"=40', VERT. 1"=4' ACCOUNT No. 75-193 DRAWING NUMBER S-1021 SHEET 4 OF 6 75-193-B	
DESIGNED BY: <i>R.H.</i> DRAWN BY: <i>R.H.</i> CHECKED BY:		REVISIONS MARK APPR. DATE		*AS BUILT 4-76 KFT	



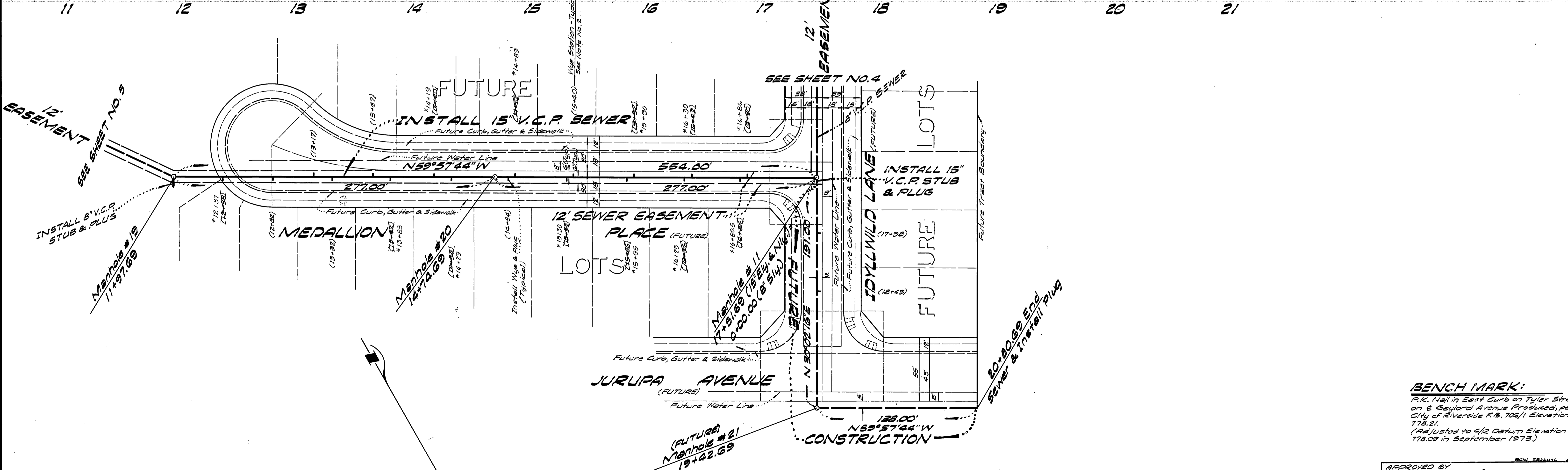
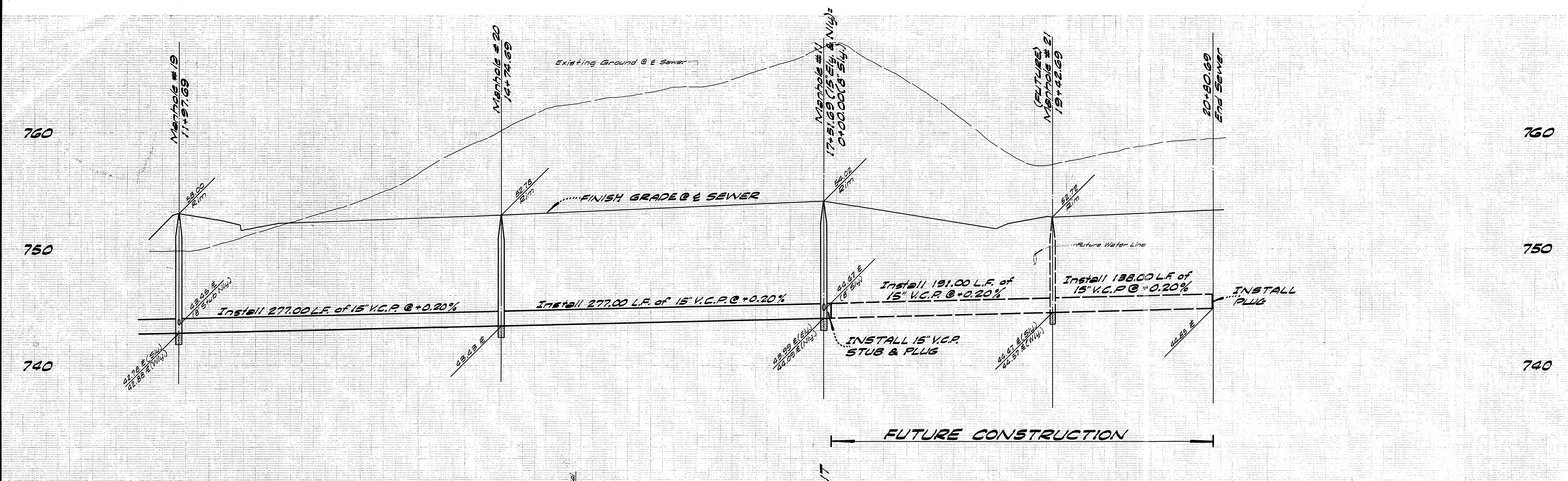
NOTE:
See Sheet No. 1 for General Notes.

SPECIAL NOTE
Rough grading between Stations 2+53.40 and 2+00.00 shall be completed to elevation 748.00 prior to sewer construction. The sewer contractor shall coordinate the work with the grading contractor.

BENCH MARK:
R.K. Nail in East Curb on Tyler Street, on E Gaylord Avenue Produced, per City of Riverside F.B. 706, Elevation 778.81 (Adjusted to 9/2 Datum Elevation 778.09 in September 1978).

ALBERT A. WEBB ASSOCIATES CIVIL ENGINEERS RIVERSIDE, CALIFORNIA APPROVED BY: <i>[Signature]</i> DATE: 9-3-75 R.E. No. 100266 W.D. 75-193 FOR ANDREWS DEV. CO. F.B. 1031		CITY OF RIVERSIDE, CALIFORNIA PUBLIC WORKS DEPARTMENT APPROVED BY: <i>[Signature]</i> DATE: 1/30/76 PRINCIPAL ENGINEER PARK DEPARTMENT TRAFFIC DIVISION CHIEF PUB. WKS. ENGR.		TRACT NO. 6537-1 SEWER PLAN & PROFILE 12' EASEMENT ACCOUNT No. 75-193 DRAWING NUMBER S-1021 SHEET 5 OF 6 SCALE: HORZ. 1"=40'; VERT. 1"=4'	
DESIGNED BY	DRAWN BY	CHECKED BY	DATE	APPROVED BY	DATE

* AS BUILT 4-76 KPT



BENCH MARK:
 P.K. Nail in East Curb on Tyler Street
 on E Gaylord Avenue Produced, per
 City of Riverside F.B. 106/1 Elevation
 778.21.
 (Adjusted to 4/2 Return Elevation
 778.09 in September 1975.)

NOTE:
 See Sheet No. 1 for
 General Notes.

ALBERT A. WEBB ASSOCIATES
 CIVIL ENGINEERS
 RIVERSIDE, CALIFORNIA
 APPROVED BY: *[Signature]* DATE: 9-3-75
 R.E. No. 18052

MARK	REVISIONS	APPR.	DATE

CITY OF RIVERSIDE, CALIFORNIA
 PUBLIC WORKS DEPARTMENT
 APPROVED BY: *[Signature]* DATE: 1/30/76
 PRINCIPAL ENGINEER
 PARK DEPARTMENT
 TRAFFIC DIVISION
 CHIEF PUB. WKS. ENGR.

APPROVED BY: *[Signature]* DATE: 1-28-76
 CHIEF UTILITIES ENGINEER, WATER
 TRACT NO. 6537-1
 SEWER PLAN & PROFILE
 12' EASEMENT
 ACCOUNT No. 75-193
 DRAWING NUMBER
 S-1021
 SHEET 6 OF 6
 SCALE: HORIZ. 1"=40', VERT. 1"=4'

W.D. 75-193 FOR ANDREW'S DEV. CO. F.B. 1031

DESIGNED BY: P.H. DRAWN BY: P.H. CHECKED BY: *[Signature]*

DATE: 1/30/76

SCALE: HORIZ. 1"=40', VERT. 1"=4'