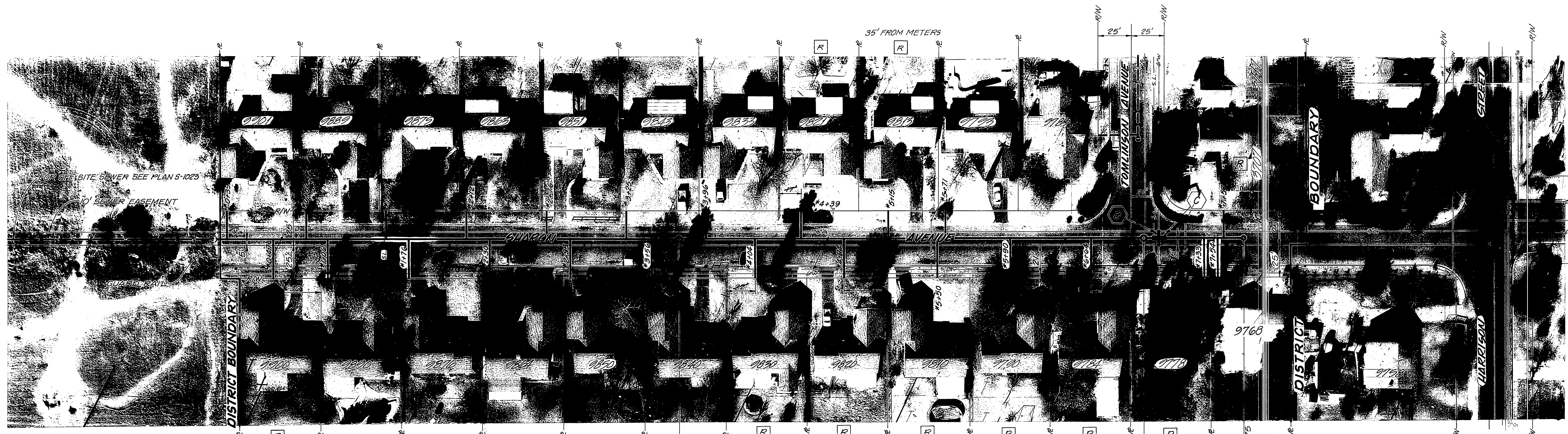


BENCHMARK ELEVATION 72.544  
 R.R. CROSS IN POWER POLE 31288' ON  
 WESTERN SIDE OF SOLMA AVENUE AT  
 THE END OF STREET  
 F.B. 09/7/11



**GENERAL NOTES**

1. CONSTRUCTION SHALL BE IN ACCORDANCE WITH THE STANDARD SPECIFICATIONS FOR PUBLIC WORKS CONSTRUCTION, 1976 EDITION.
2. THE FOLLOWING STANDARD DRAWINGS APPLY:  
 NO. 482 FOR PIPE BEDDING  
 NO. 483 FOR TRENCH BACKFILL  
 NO. 500 FOR MANHOLE  
 NO. 540 FOR MANHOLE CASTING  
 NO. 560 FOR CLEANSOUT  
 NO. 562 FOR SEWER LATERALS
3. [R] INDICATES THAT PROPERTY OWNER HAS REQUESTED LOCATION OF LATERAL AT LOCATION SHOWN. LETTER IS IN FILE.

4. PCC ENCASUREMENTS AS REQUIRED BY PUD-WATER:  
 (B) ENCASE WATER MAIN 2' EACH SIDE OF TRENCH PER STD. DWG. CWD-023, TYPE "B"  
 (C) ENCASE SEWER 4.5' EACH SIDE OF WATER MAIN PER STD. DWG. CWD-023, TYPE "C"  
 IF SEPARATION OF SEWER LATERAL AND WATER MAIN IS LESS THAN 1', ENCASE 9 L.F. OF SEWER LATERAL PER STD. DWG. NO. CWD-023, TYPE "C"  
 ENCASUREMENT CENTERED ON WATER LINE.



APPROVED BY  
*Mark Fisher*  
 CHIEF UTILITIES ENGINEER, WATER  
 DATE 9-16-16

CITY OF RIVERSIDE, CALIFORNIA PUBLIC WORKS DEPARTMENT	
APPROVED BY PRINCIPAL ENGINEER PARK DEPARTMENT TRAFFIC DIVISION CHIEF PUB. WKS. ENGR.	BY DATE 9/22/16 9/22/16
APPROVED BY <i>Sharon Tomlinson</i> DIRECTOR OF PUBLIC WORKS	DATE 9/28/16
MARK	REVISIONS
DESIGNED BY	DRAWN BY
APPR. DATE	CHECKED BY

\*AS BUILT 8-77 KPT

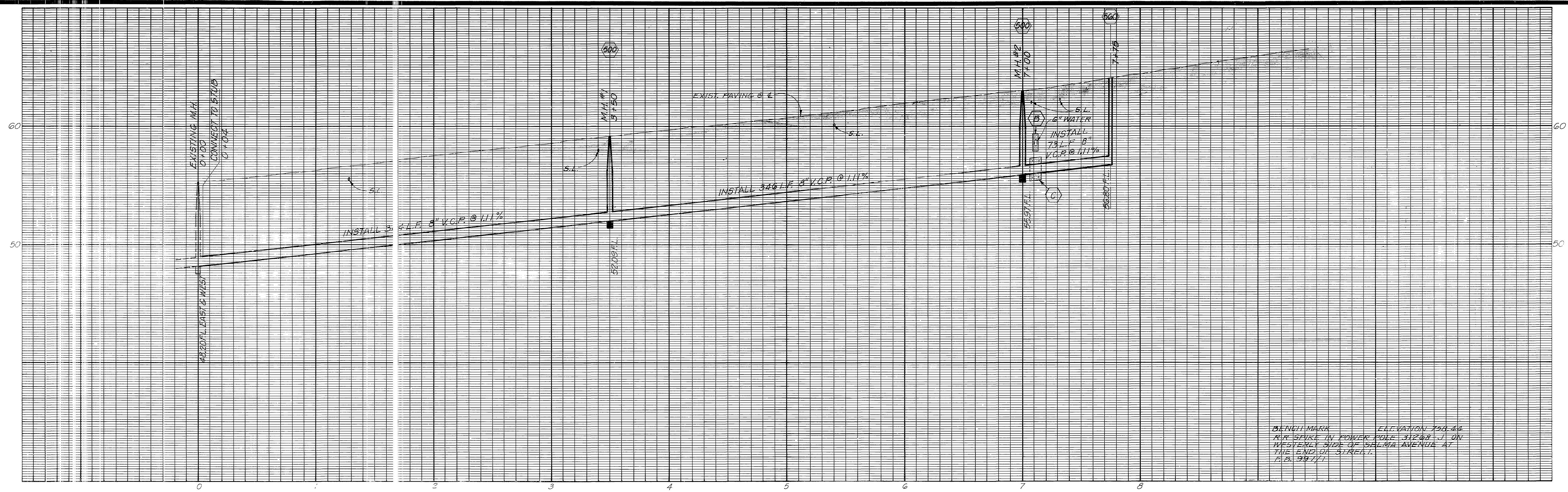
SHARON-TOMLINSON  
ASSESSMENT DISTRICT  
(SEWER)

SHARON AVENUE

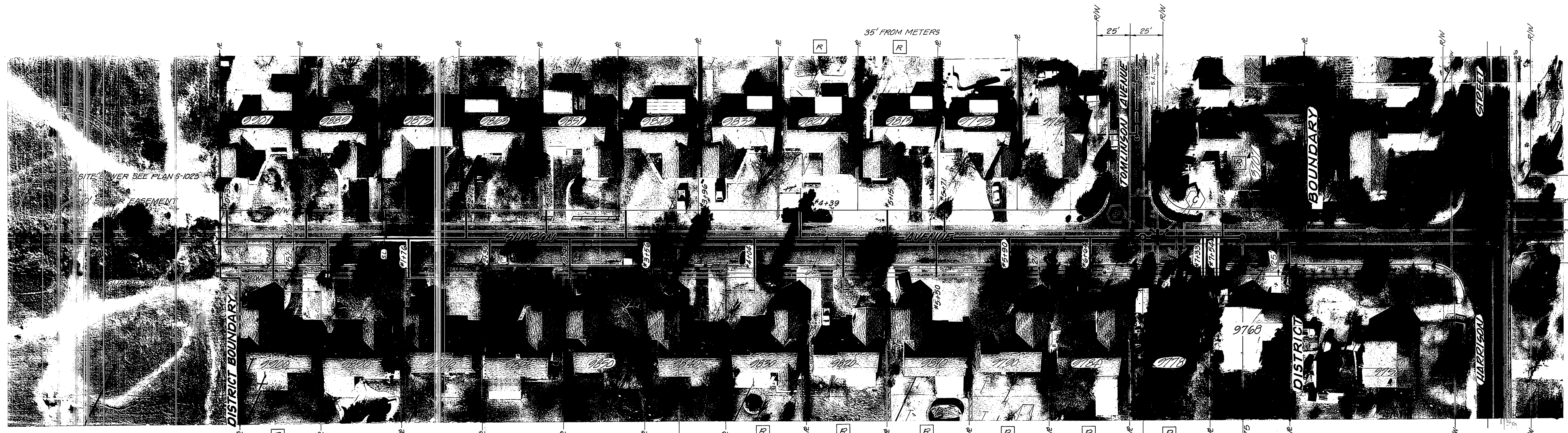
ACCOUNT No. 84-151-049  
DRAWING NUMBER  
**5-1022**  
SHEET 1 OF 2

HORIZ. SCALE: 1" = 40'  
VERT. SCALE: 1" = 4'





BENCHMARK ELEVATION 50.44  
 RR-555 IN POWER POLE 312-00 J ON  
 WEST SIDE SHIP OF SALAMA AVENUE AT  
 THE END OF STREET  
 F.B. 9/2/77



**GENERAL NOTES**

- CONSTRUCTION SHALL BE IN ACCORDANCE WITH THE STANDARD SPECIFICATIONS FOR PUBLIC WORKS CONSTRUCTION, 1976 EDITION.
- THE FOLLOWING STANDARD DRAWINGS APPLY:  
 NO. 452 FOR PIPE BEDDING  
 NO. 453 FOR TRENCH BACKFILL  
 NO. 500 FOR MANHOLE  
 NO. 540 FOR MANHOLE CASTING  
 NO. 560 FOR CLEANOUT  
 NO. 562 FOR SEWER LATERALS
- R** INDICATES THAT PROPERTY OWNER HAS REQUESTED LOCATION OF LATERAL AT LOCATION SHOWN. LETTER IS IN FILE.  
 8" VCP MAIN (TYPICAL)  
 INSTALL 4" OR, AT OPTION OF CONTRACTOR, USE "Y" FOR LATERALS  
 4" VCP LATERAL (TYPICAL)

4. PCC ENCASUREMENTS AS REQUIRED BY PUO - WATER:  
 (B) ENCASE WATER MAIN 2' EACH SIDE OF TRENCH PER STD. DWG. CWD-023, TYPE "B"  
 (C) ENCASE SEWER 4.5' EACH SIDE OF WATER MAIN PER STD. DWG. CWD-023, TYPE "C"  
 IF SEPARATION OF SEWER LATERAL AND WATER MAIN IS LESS THAN 1', ENCASE 9 L.F. OF SEWER LATERAL PER STD. DWG. NO. CWD-023, TYPE "C" ENCASUREMENT CENTERED ON WATER LINE.

APPROVED BY  
*[Signature]*  
 CHIEF UTILITIES ENGINEER, WATER  
 DATE 7-16-76

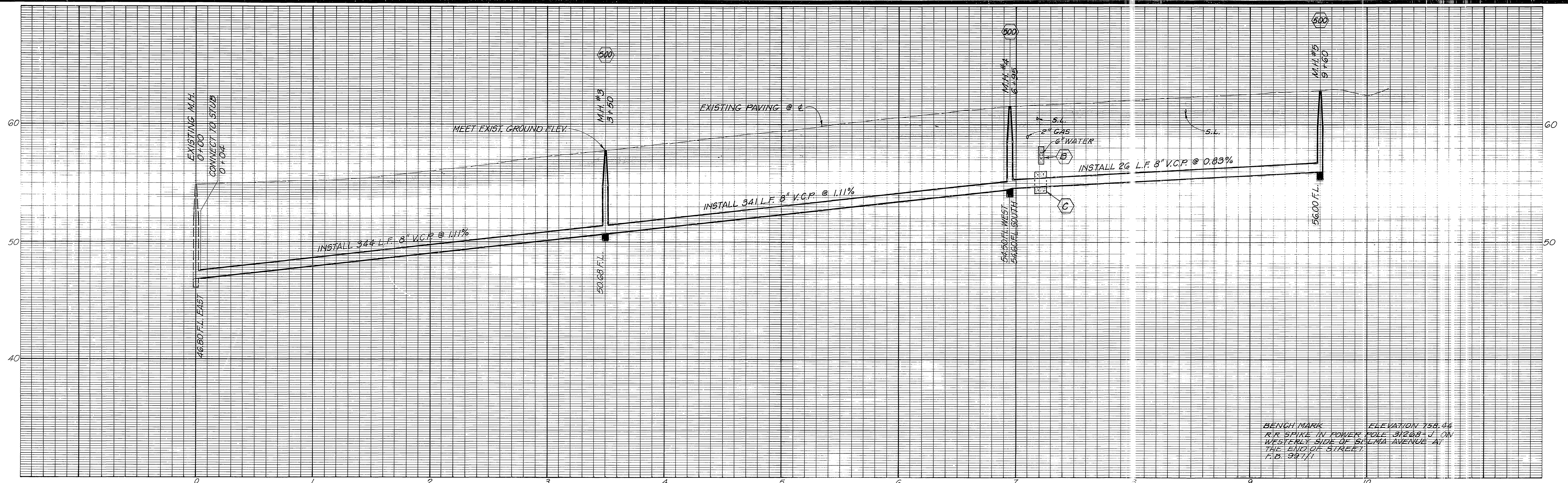
CITY OF RIVERSIDE, CALIFORNIA PUBLIC WORKS DEPARTMENT		SHARON-TOMLINSON ASSESSMENT DISTRICT (SEWER)		ACCOUNT NO. 84-491-049
APPROVED BY PRINCIPAL ENGINEER PARK DEPARTMENT TRAFFIC DIVISION CHIEF PUB. WKS. ENGR.	BY DATE 7/20/76	APPROVED BY <i>[Signature]</i> DIRECTOR OF PUBLIC WORKS	DATE 9/28/76	DRAWING NUMBER 5-1022
MARK	REVISIONS	APPR. DATE	DESIGNED BY	DRAWN BY
DESIGNED BY		DRAWN BY		CHECKED BY
HORIZ. SCALE: 1" = 40'		VERT. SCALE: 1" = 4'		

\*AS BUILT 8-77 KET

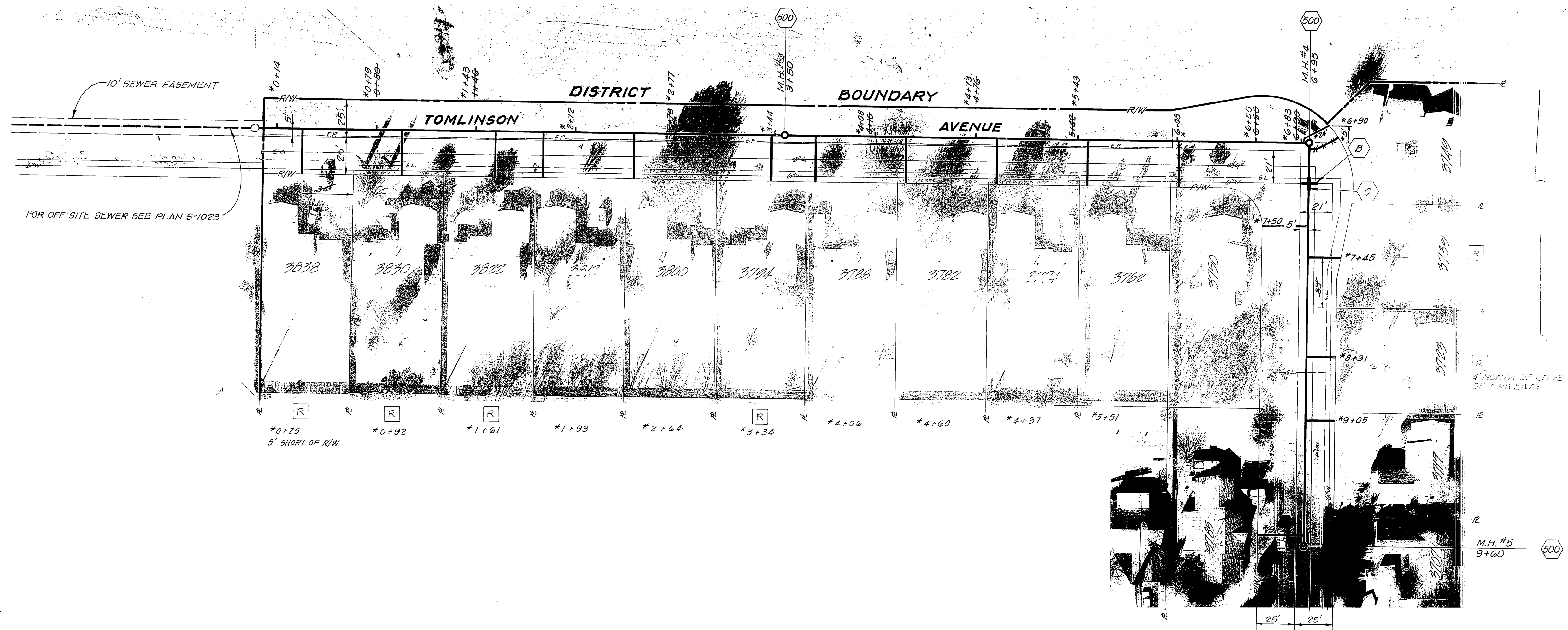
INDEXED: *[Signature]*

SHEET 1 OF 2





BENCHMARK ELEVATION 758.04  
 R.R. SPIKE IN POWER POLE 31268-J ON  
 WESTERLY SIDE OF SALMA AVENUE AT  
 THE END OF STREET.  
 P.B. 39717



APPROVED BY  
*Henry Taylor*  
 CHIEF UTILITIES ENGINEER, WATER  
 9-16-76 DATE

DESIGNED BY  
 DRAWN BY KPT  
 CHECKED BY

CITY OF RIVERSIDE, CALIFORNIA  
 PUBLIC WORKS DEPARTMENT

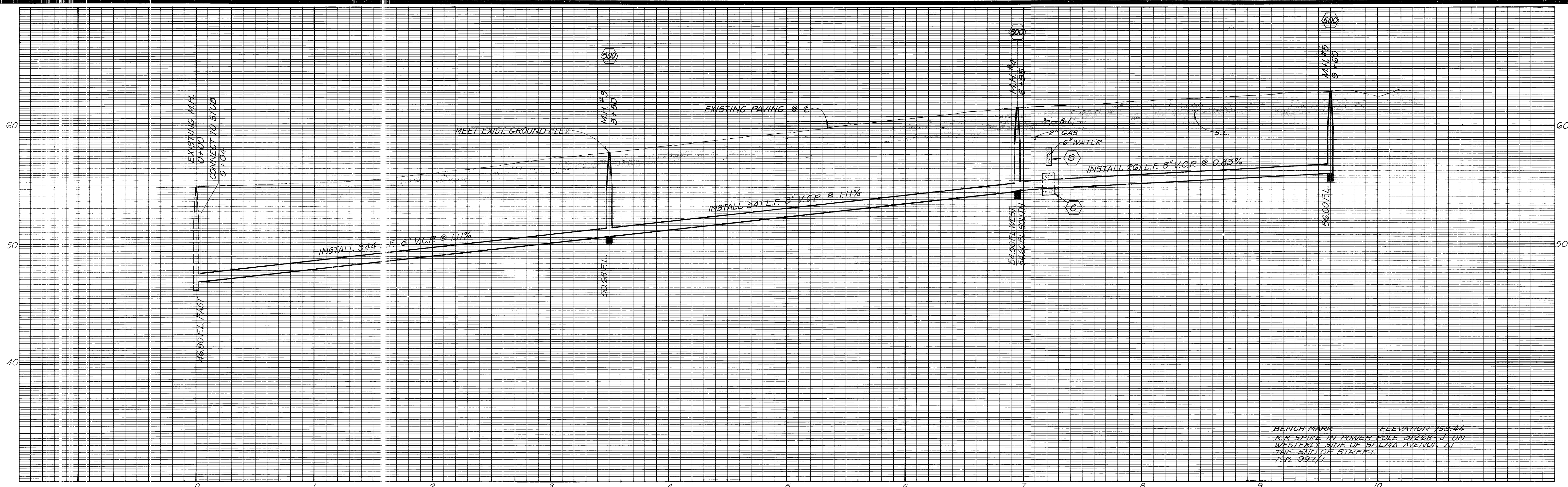
APPROVED BY	BY	DATE	APPROVED BY
PRINCIPAL ENGINEER	<i>LAYCO</i>	9/22/76	<i>LAYCO</i>
TRAFFIC DIVISION			DIRECTOR OF PUBLIC WORKS
CHIEF PUB. WKS. ENGR.			DATE 9/22/76

SHARON TOMLINSON  
 ASSESSMENT DISTRICT  
 (SEWER)  
 TOMLINSON AVENUE

INDEXED  
 ACCOUNT No. 84-451-649  
 DRAWING NUMBER  
**5-1022**  
 SHEET 2 OF 2

HORIZ. SCALE: 1" = 40'  
 VERT. SCALE: 1" = 4'





BENCHMARK ELEVATION 758.44  
 R/R SPIKE IN POWER POLE 31288-J ON  
 WESTERLY SIDE OF SELMA AVENUE AT  
 THE END OF STREET.  
 15.6. 98/11



APPROVED BY <i>[Signature]</i> CHIEF UTILITIES ENGINEER, WATER		DATE 8-16-76	DESIGNED BY DRAWN BY CHECKED BY	CITY OF RIVERSIDE, CALIFORNIA PUBLIC WORKS DEPARTMENT	APPROVED BY PRINCIPAL ENGINEER PARK DEPARTMENT TRAFFIC DIVISION CHIEF PUB. WKS. ENGR.	BY DATE 8/19/76	APPROVED BY DIRECTOR OF PUBLIC WORKS DATE 2/26/76	ACCOUNT No. 84-451-689 DRAWING NUMBER <b>5-1022</b> SHEET 2 OF 2
--	--	-----------------	---------------------------------------	--	---	--------------------	--	---

\*AS BUILT 8-77 KPT  
**SHARON TOMLINSON**  
**ASSESSMENT DISTRICT**  
**(SEWER)**  
 TOMLINSON AVENUE  
 HORIZ. SCALE: 1" = 40'  
 VERT. SCALE: 1" = 4'