

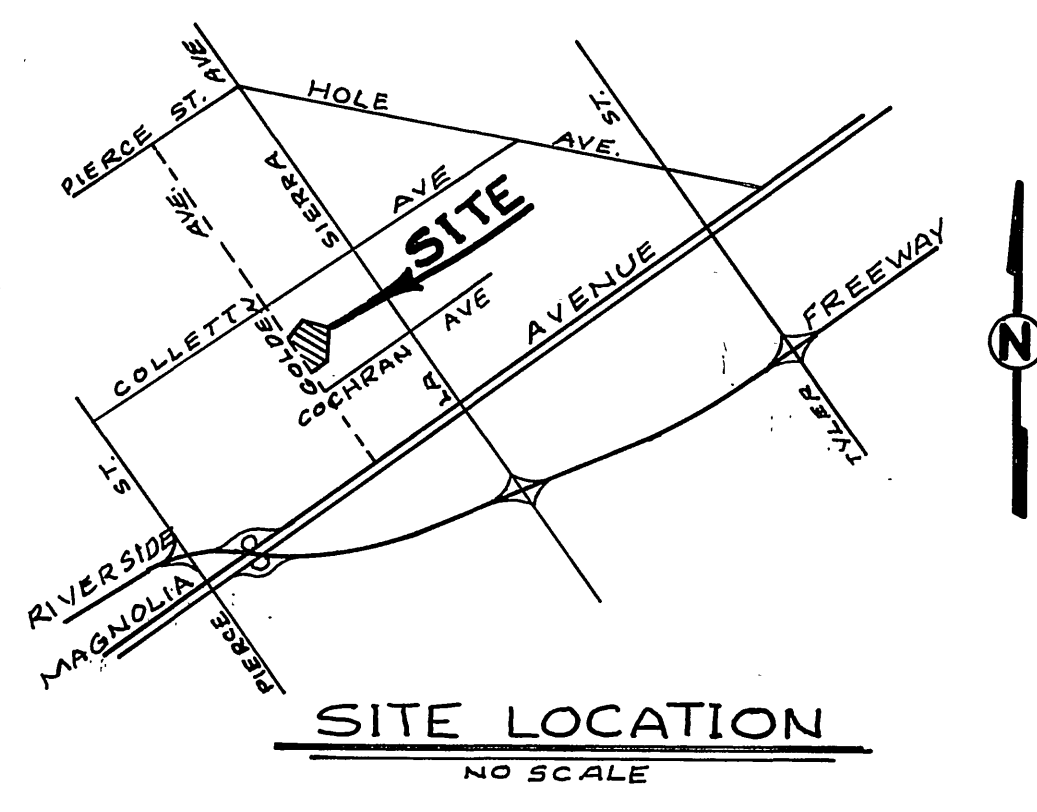


GENERAL NOTES

1. Construction shall be in accordance with the Standard Specifications for Public Works Construction, 1973 Edition, and City of Riverside standard drawings.
2. It shall be the responsibility of the contractor to clear the right of way in accordance with the provisions of the law as it affects each utility including irrigation lines and appurtenances and at no cost to the City.
3. Pipe shall be bedded per Case 1, Standard Drawing No. 452, unless otherwise specified on plans. *Ground water - Used rock bedding.
4. Location of wyes and laterals to be determined at the direction of the owner. Avoid conflict with proposed and existing facilities.
5. All stubs and laterals to be constructed in accordance with standard Drawing No. 562. stubs shall be plugged and capped.
6. Manhole frames and covers to be set as noted in profile by sewer contractor after final paving of street.
7. Laterals are to be 4" and extended to property line.
8. Prior to construction of sewer, contractor is to expose existing sewer and contact the Engineer for verification of existing elevations.
9. A plug shall be installed and will remain in place where the new sewer connects with the existing sewer until the new sewer is accepted by the city.

NOTICE TO CONTRACTOR

The existence and location of underground utility pipes or structures shown on these plans are obtained by a search of the available records. To the best of our knowledge, there are no existing utilities except as shown on these plans.
 The Contractor is required to take due precautionary measures to protect the utility lines shown and any other lines not of record or not shown on these plans.



BENCH MARK
 IRP SPIKE IN POLE # 24529-1 AT S.E. CORNER, LA SIERRA AND COLLETT. OR.F.B. 37876 ORY 704.25

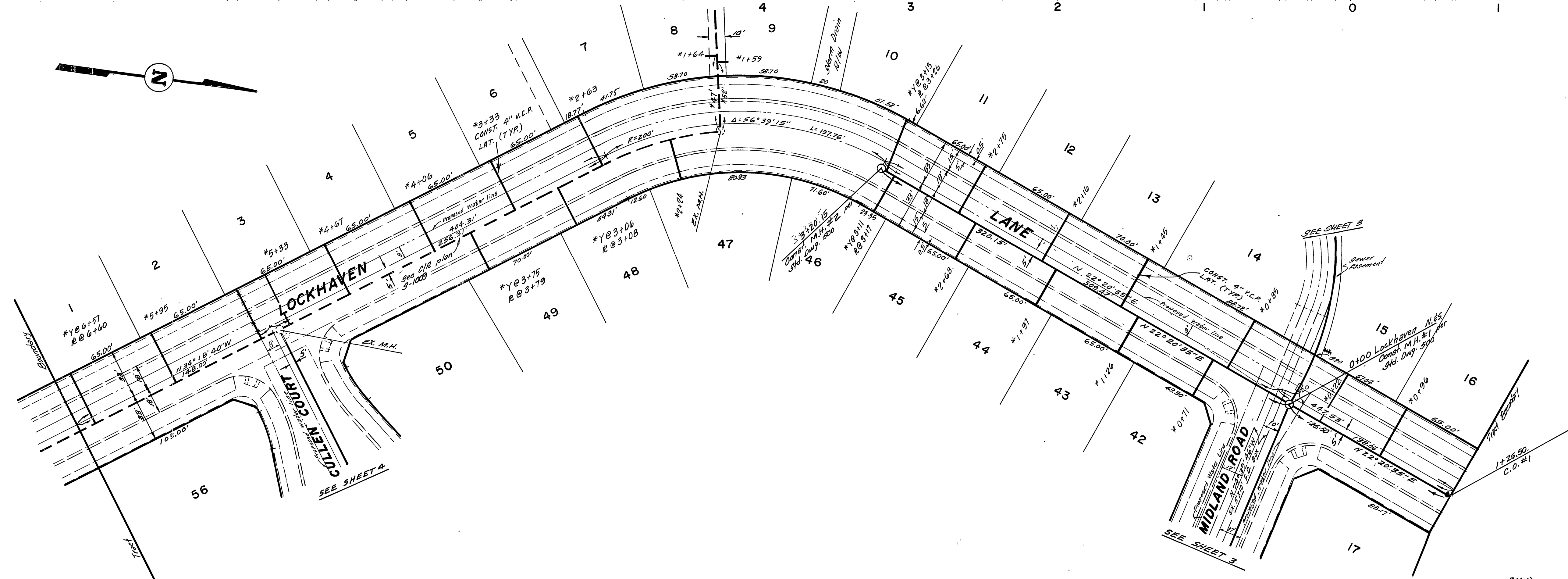
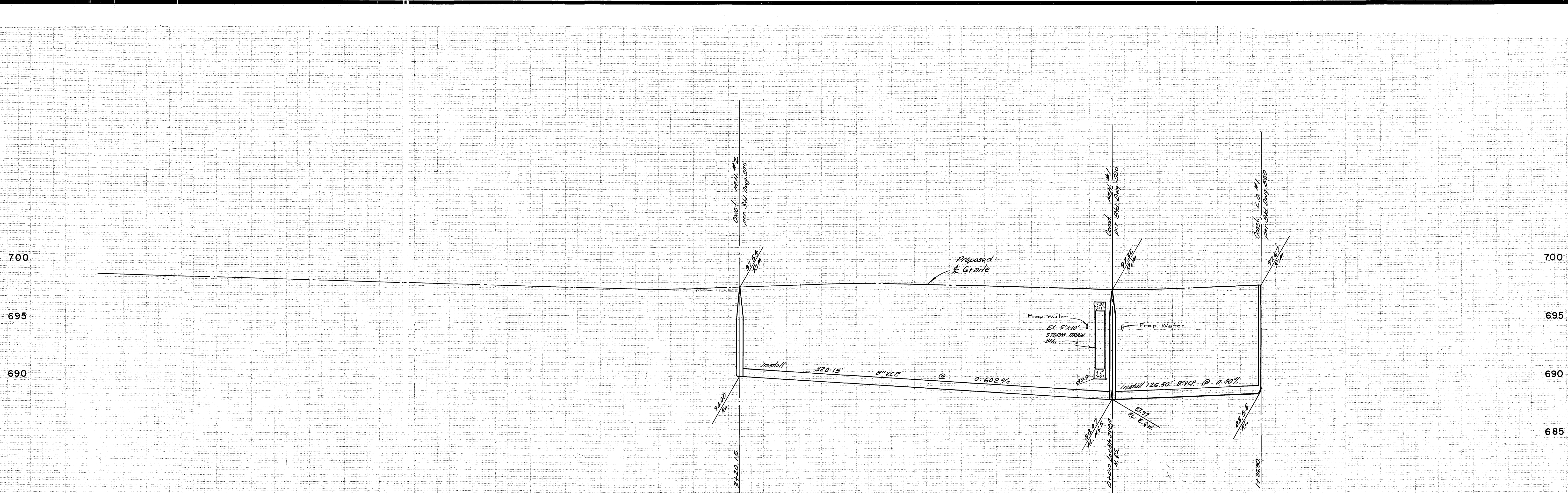
ALBERT A. WEBB ASSOCIATES
 CIVIL ENGINEERS
 RIVERSIDE, CALIFORNIA
 APPROVED BY *W. Haincett* DATE 6-20-75
 R.E. No. 15056

MARK	REVISIONS	APPR.	DATE

APPROVED BY *Wesley Taylor* DATE 2-4-76
 CHIEF UTILITIES ENGINEER, WATER
 CITY OF RIVERSIDE, CALIFORNIA
 PUBLIC WORKS DEPARTMENT
 APPROVED BY *William D. Gardner* DATE 3/10/76
 DIRECTOR OF PUBLIC WORKS

ACCOUNT No. 75-157
 DRAWING NUMBER
5-1026
 SHEET 1 OF 4
 SCALE: 1" = 50'

SEWER PLAN AND PROFILE
INDEX
 TRACT 5677-2
 *AS BUILT 8-76 KET



BENCH MARK
 B.M. SPIRE IN B.P.O. # 2858-1
 AT S.E. CORNER 'LA SIERRA' AND
 COLLETT. CORNER 2-1973. ELEV. 704.25.

APPROVED BY
Wade Taylor
 CHIEF UTILITIES ENGINEER, WATER
 DATE 2-4-76

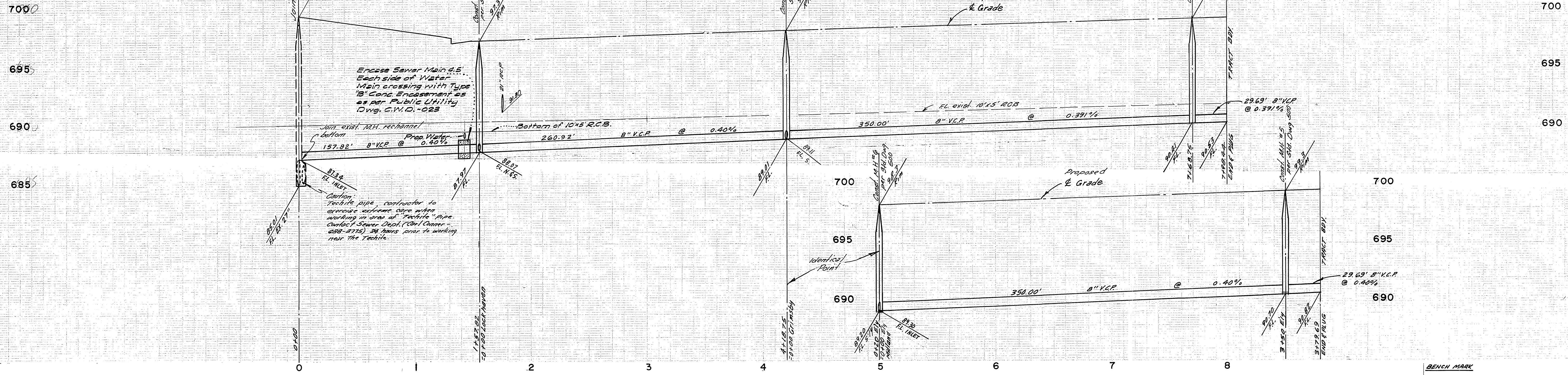
ALBERT A. WEBB ASSOCIATES
 CIVIL ENGINEERS
 RIVERSIDE, CALIFORNIA
 APPROVED BY *L.A. Mansueti* DATE 6-20-75
 R.E. No. 16056

MARK	REVISIONS	APPR.	DATE

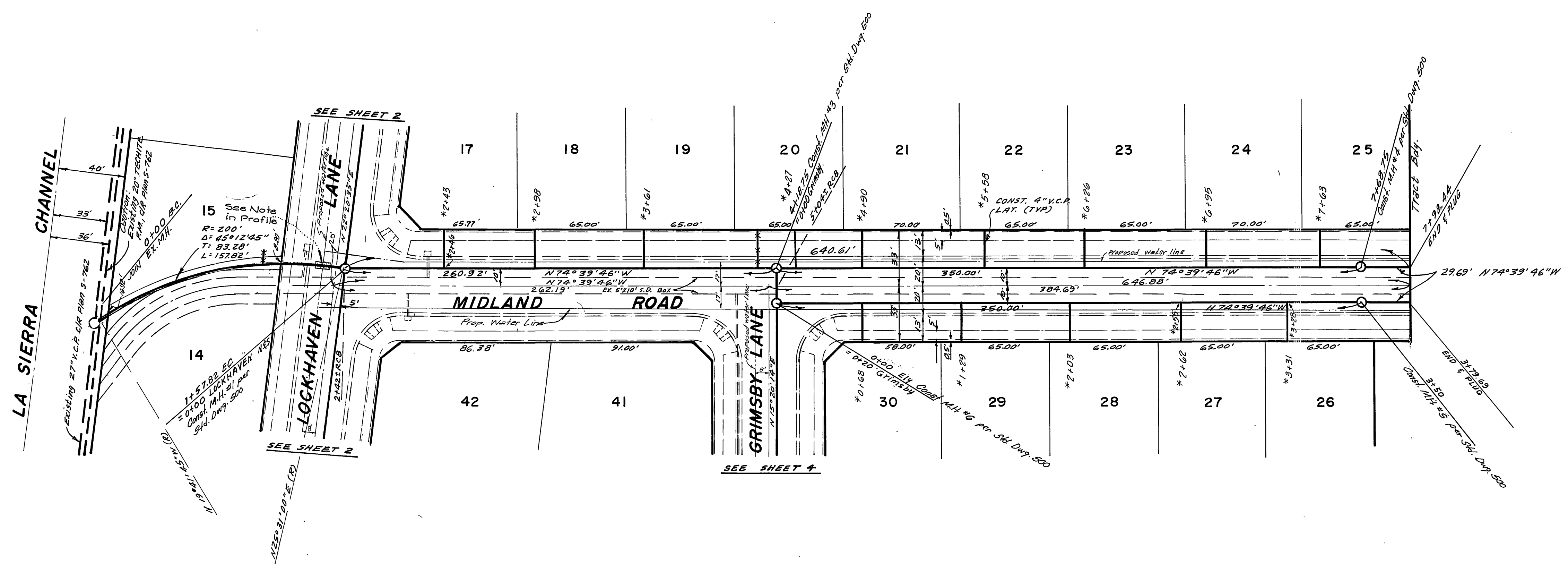
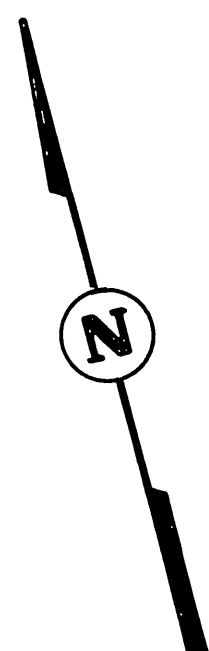
CITY OF RIVERSIDE, CALIFORNIA
 PUBLIC WORKS DEPARTMENT
 APPROVED BY *William D. Gardner*
 PRINCIPAL ENGINEER
 PARK DEPARTMENT
 TRAFFIC DIVISION
 CHIEF PUB. WKS. ENGR.
 DATE 3/10/76

SEWER PLAN AND PROFILE
 LOCKHAVEN LANE
 TRACT NO. 5677-2
 SCALE: HORIZ. 1"=40', VERT. 1"=4'

ACCOUNT No. 75-157
 DRAWING NUMBER
 S-1026
 SHEET 2 OF 4
 75-157-B



BENCH MARK
 P.P. 3086 IN D. BOX # 2550-7
 AT 35' SQUARE TO CORNER AND
 QUART. CORNER ELEV. 704.85

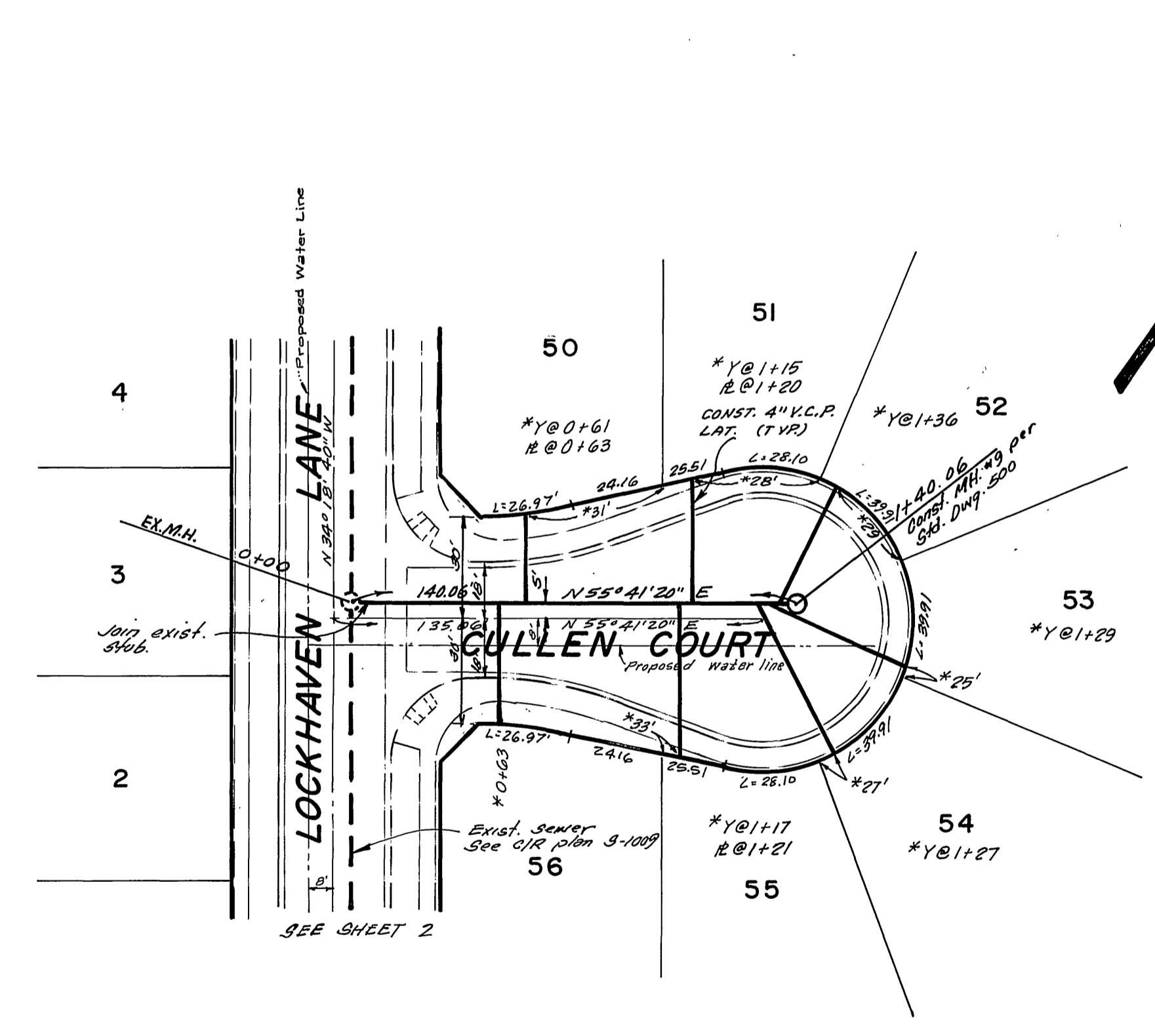
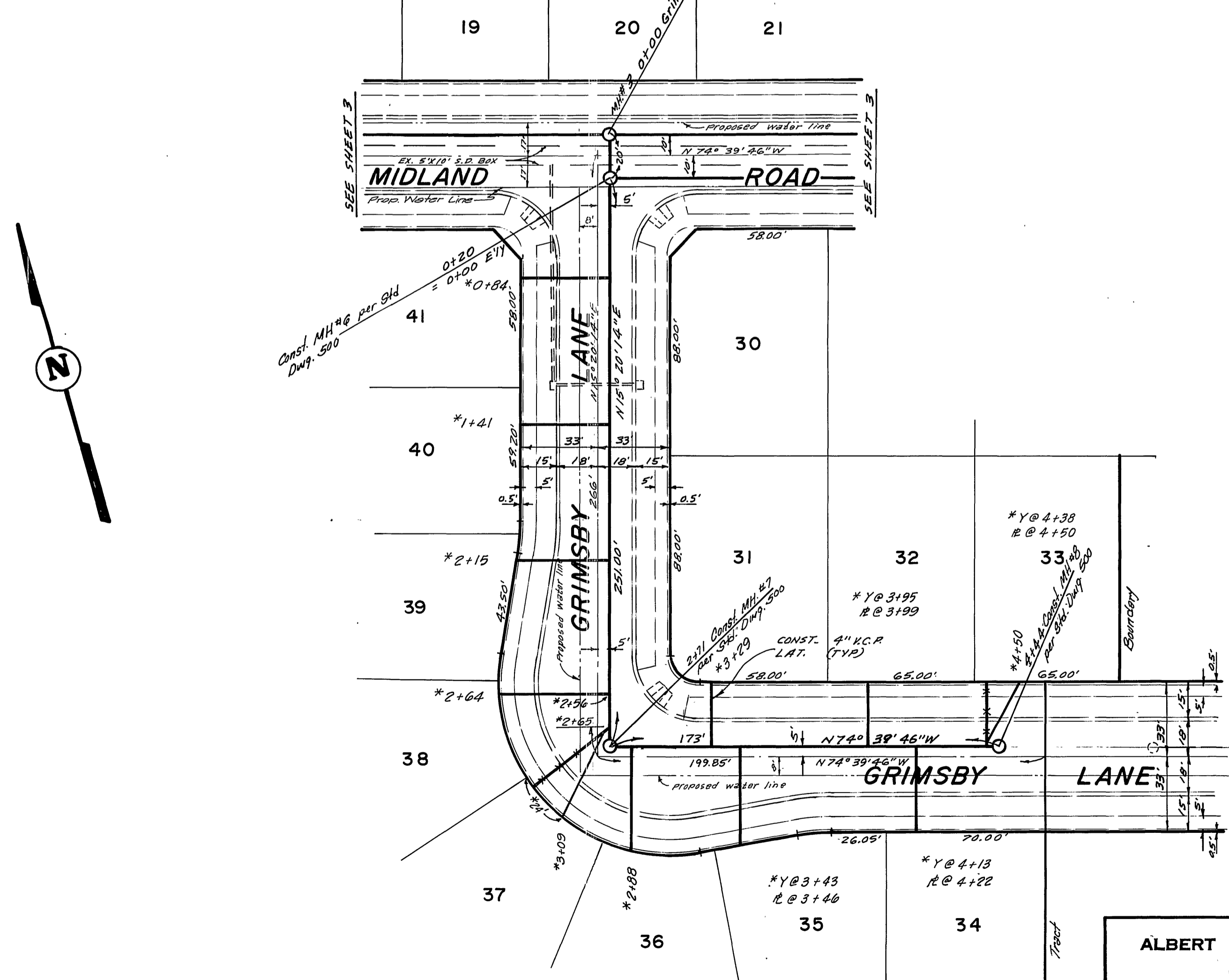
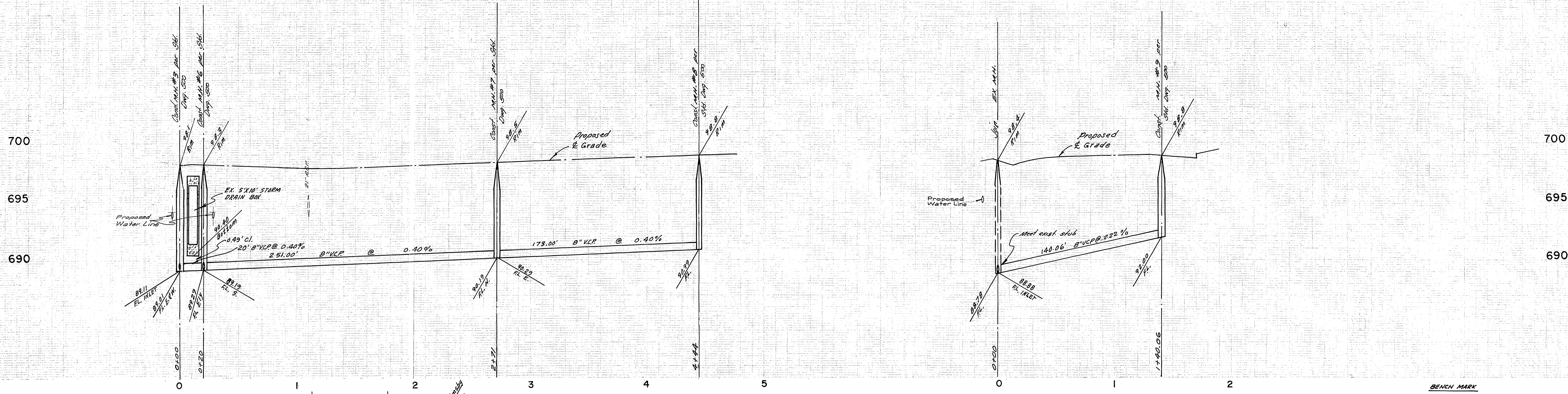


ALBERT A. WEBB ASSOCIATES
 CIVIL ENGINEERS
 RIVERSIDE, CALIFORNIA
 APPROVED BY *L.A. Hammett* DATE 6-20-75
 R.E. No. 16056

APPROVED BY *Walter J. Fisher* DATE 2-4-76
 CHIEF UTILITIES ENGINEER, WATER
 CITY OF RIVERSIDE, CALIFORNIA
 PUBLIC WORKS DEPARTMENT
 APPROVED BY *William D. Gardner*
 DIRECTOR OF PUBLIC WORKS
 DATE 3/0/76

*AS BUILT 8-76 KPT
 SEWER PLAN AND PROFILE
 MIDLAND ROAD
 TRACT NO. 5677-2
 ACCOUNT No. 75-157
 DRAWING NUMBER
 5-1026
 SHEET 3 OF 4
 75-157-B
 SCALE: HORIZ. 1"=40', VERT. 1"=4'

W.O. 75-157 FOR MARLBOROUGH, DEV. CO. F.B. 1032
 DESIGNED BY *BEL* DRAWN BY *BEL* CHECKED BY *ADM*



BENCH MARK
 RR. SPIKE IN R. PAGE # 24589-J
 AT 922 CORNER LA SHREDA ROAD
 QUAD. COR. 97816 BLK. 70A 25

ALBERT A. WEBB ASSOCIATES
 CIVIL ENGINEERS
 RIVERSIDE, CALIFORNIA
 APPROVED BY *L.A. Wainwright* DATE 6-20-75
 R.E. No. 16056
 W.D. 75-157 FOR: MARLBOROUGH DEV. CO. F.B. 1032

MARK	REVISIONS	APPR.	DATE

APPROVED BY *Walter J. ...* DATE 2-4-76
 CHIEF UTILITIES ENGINEER, WATER
 CITY OF RIVERSIDE, CALIFORNIA
 PUBLIC WORKS DEPARTMENT
 APPROVED BY *William D. ...* DATE 3/10/76
 TRAFFIC DIVISION
 CHIEF PUB. WKS. ENGR.

*AS BUILT 8-76 KPT
 SEWER PLAN AND PROFILE
GRIMSBY LANE
CULLEN COURT
 TRACT NO. 5677-2
 SCALE: HORIZ. 1"=40', VERT. 1"=4'

ACCOUNT No. 75-157
 DRAWING NUMBER
5-1026
 SHEET 4 OF 4
 75-157-B