

EXIST'G 8" V.C.P. SEE PG. 5-1028

GENERAL NOTES

1. Construction shall be in accordance with the Standard Specifications for Public Works Construction, 1973 Edition, and the City of Riverside Standard Drawings.
2. It shall be the responsibility of the Contractor to clear the Right of Way in accordance with the provisions of law as it affects each utility including irrigation lines and appurtenances and at no cost to the City.
3. Pipe shall be bedded per Case I, Standard Drawing No. 452, unless otherwise specified on the plans.
4. Location of wyes and laterals to be determined in the field at the direction of the owner.
5. All stubs and laterals to be constructed in accordance with Standard Drawing No. 562. Stubs shall be plugged and capped.
6. Manhole frames and covers to be set as noted in profiles by sewer Contractor after final paving of Streets.
7. Laterals are to be 4" V.C.P. and extended to property line.
8. Prior to construction of sewer, Contractor is to expose the existing sewer and contact the Engineer for verification of existing location and elevation.
9. Plugs shall be installed, and will remain in place, where the new sewer connects with the existing sewer until such time as the new sewer is accepted by the City.
10. Encase sewer 4.5' each side of proposed water main crossing per Public Utilities Drawing CWD 023, Type C.

NOTICE TO CONTRACTOR

The existence and location of underground utility pipes or structures shown on these plans are obtained by search of the available records. To the best of our knowledge, there are no existing utilities except as shown on these plans.

The Contractor is required to take due precautionary measures to protect the utility lines shown and any other lines not of record or not shown on these plans.

BENCH MARK ELEV. 881.950

Top of brass disk E4-B (Capped) at the intersection of Van Buren Blvd. and Victoria Ave. 5/6 F.B. 733/43.

INDEX MAP
Scale: 1" = 50'

ALBERT A. WEBB ASSOCIATES
CIVIL ENGINEERS
RIVERSIDE, CALIFORNIA

APPROVED BY: *[Signature]* DATE: 4/5/76
R.E. No. 9876

W.O. 76-3 FOR HUNTLEY HOUSING F.B. 1037

MARK	REVISIONS	APPR.	DATE

DESIGNED BY: W.B.B. DRAWN BY: W.B.B. CHECKED BY: B.D.M.

Approved by: *[Signature]* Date: 2-18-76
Chief Utilities Engineer, Water

CITY OF RIVERSIDE, CALIFORNIA
PUBLIC WORKS DEPARTMENT

APPROVED BY: *[Signature]* DATE: 4/15/76
PRINCIPAL ENGINEER
PARK DEPARTMENT
TRAFFIC DIVISION
CHIEF PUB. WKS. ENGR. 4-21

DATE: 4-21-76

SEWER PLAN & PROFILE

TRACT NO. 7006-1
INDEX MAP

SCALE: AS NOTED

INDEXED m.p.	ACCOUNT No.
DRAWING NUMBER	5-1028
SHEET 1 OF 5	76-3-B

855

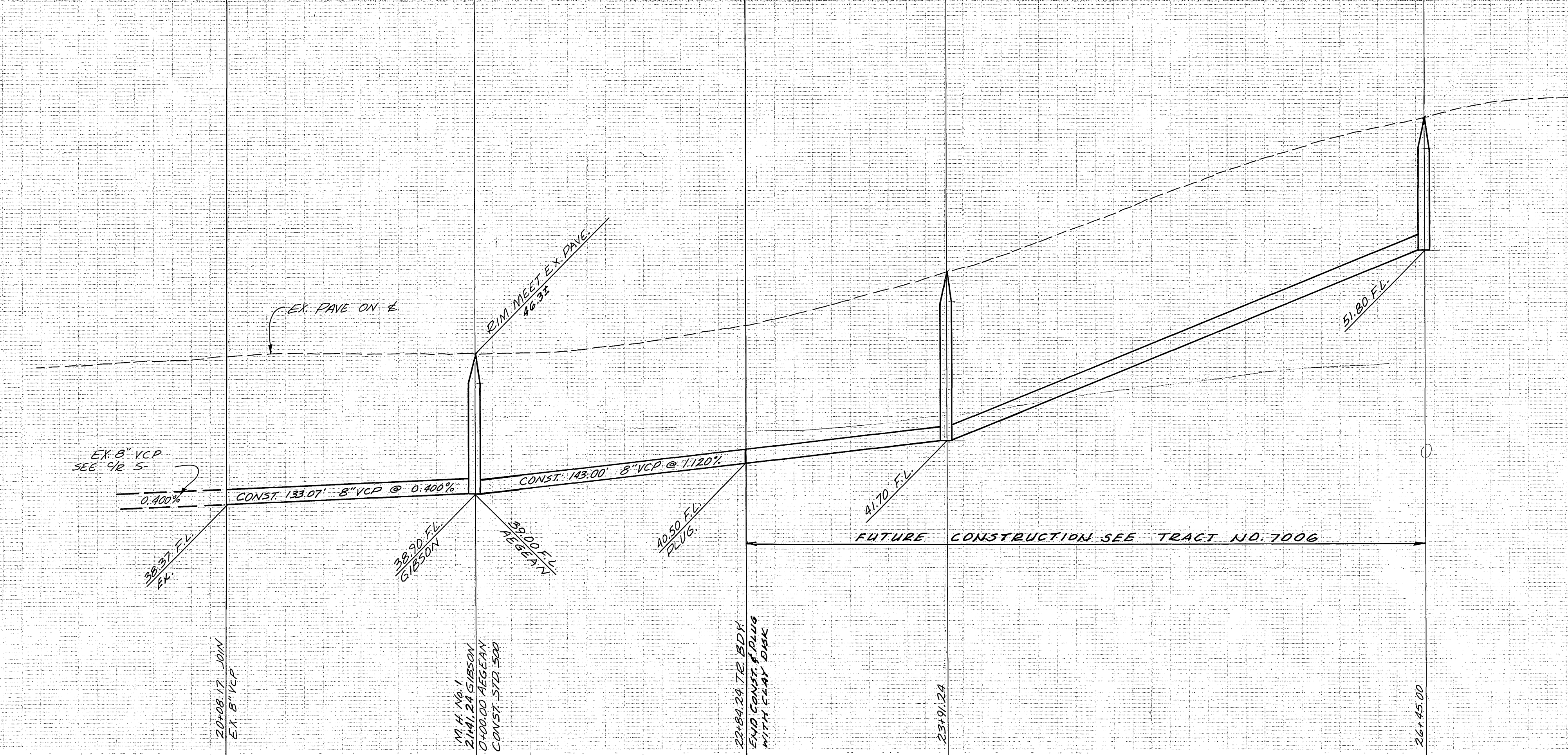
845

835

855

845

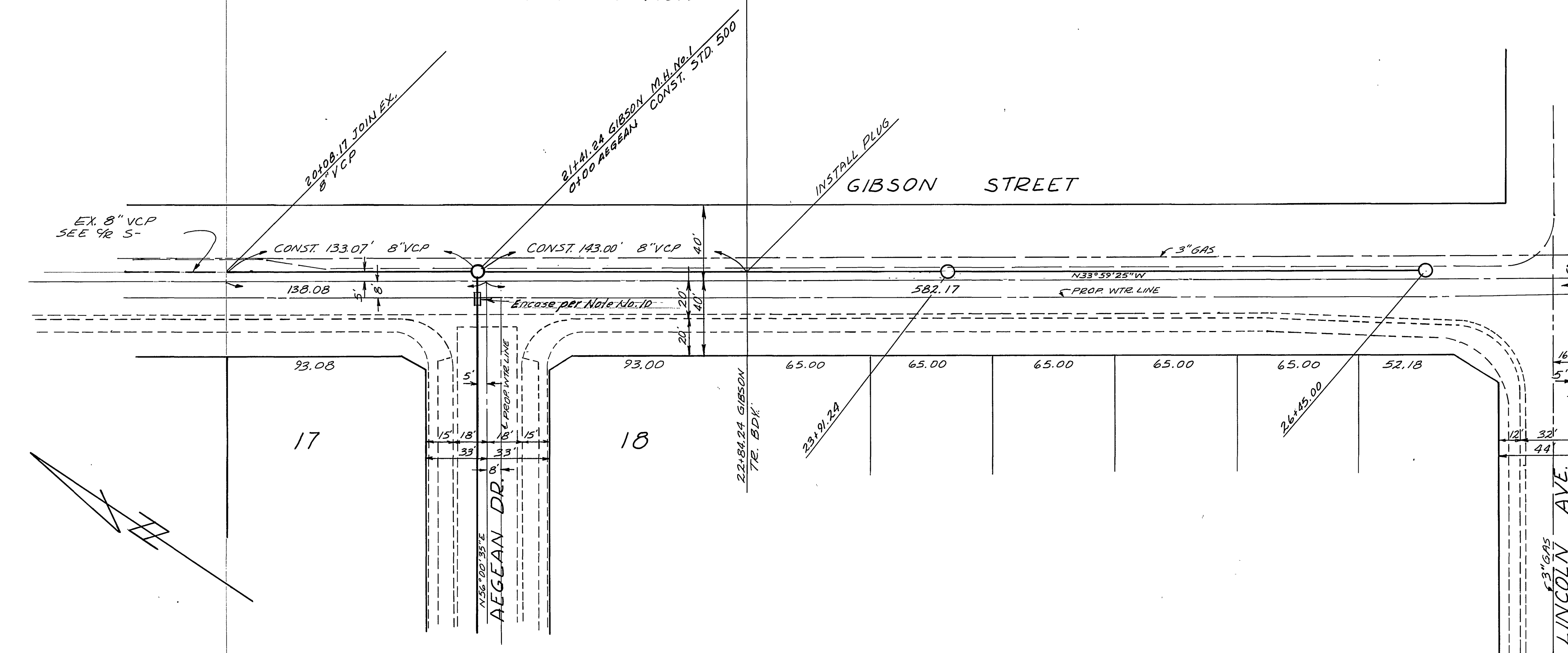
835



19 20 21 22 23 24 25 26 27 28 29 30

PRESENT CONSTRUCTION → FUTURE CONSTRUCTION

BENCH MARK ELEV. 881.950
TOP OF BRASS DISK E-A-B (CAPPED) AT THE INTERSECTION OF VAN BUREN BLVD. AND VICTORIA AVE 1/4 F.B. 735/43



NOTE:
SEE SHEET NO. 1 FOR GENERAL NOTES.

SEE SHEET 3

see plan S-1031 sheet 2

ALBERT A. WEBB ASSOCIATES
CIVIL ENGINEERS
RIVERSIDE, CALIFORNIA
APPROVED BY: *[Signature]* DATE: 2/15/76
R.E. No. 3876

MARK	REVISIONS	APPR.	DATE

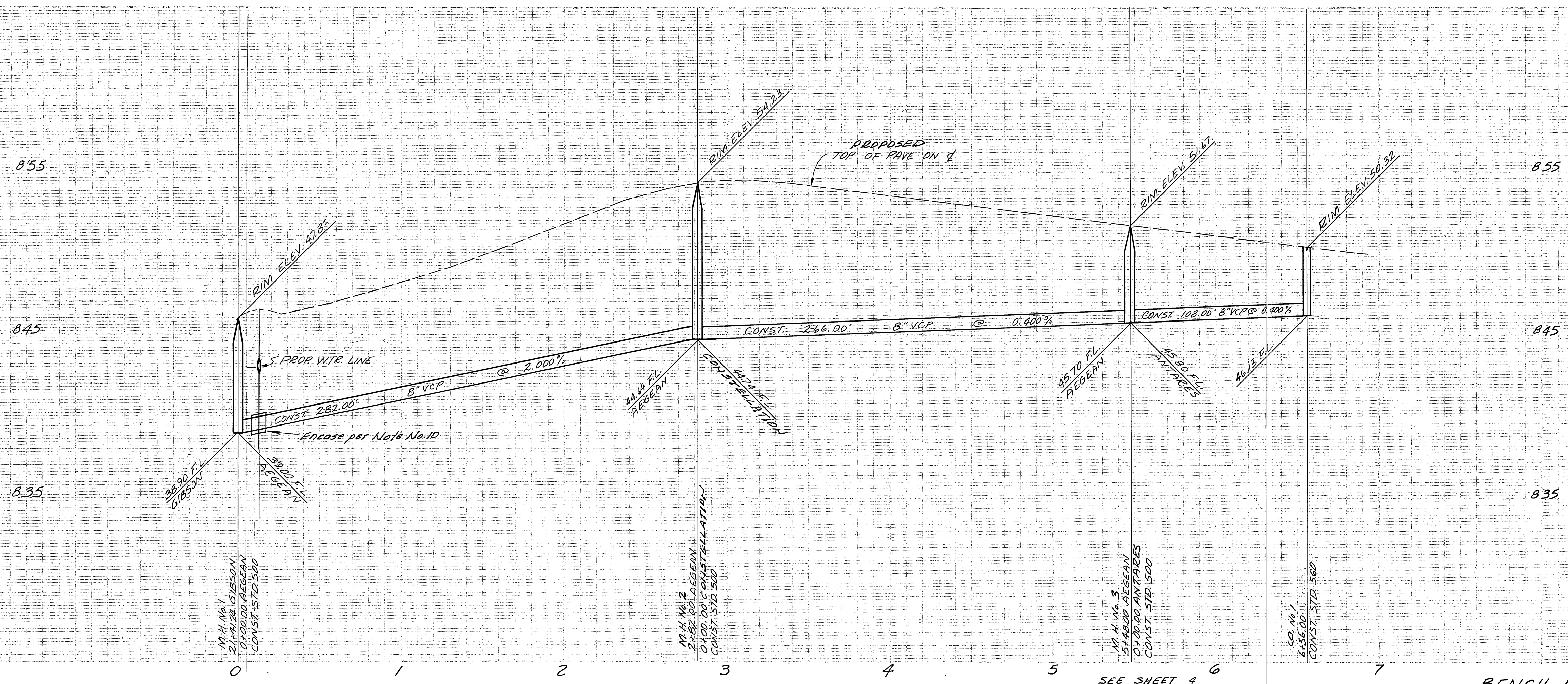
Approved by: *[Signature]* DATE: 2-18-76
Chief Utilities Engineer, Water
CITY OF RIVERSIDE, CALIFORNIA
PUBLIC WORKS DEPARTMENT
APPROVED BY: *[Signature]* DATE: 2-18-76
DIRECTOR OF PUBLIC WORKS
TRAFFIC DIVISION
CHIEF PUB. WKS. ENGR. *[Signature]* DATE: 2-18-76

SEWER PLAN & PROFILE
TRACT NO. 7006-1
GIBSON STREET

ACCOUNT No. DRAWING NUMBER
S-1028
SHEET 2 OF 5
76-3-B

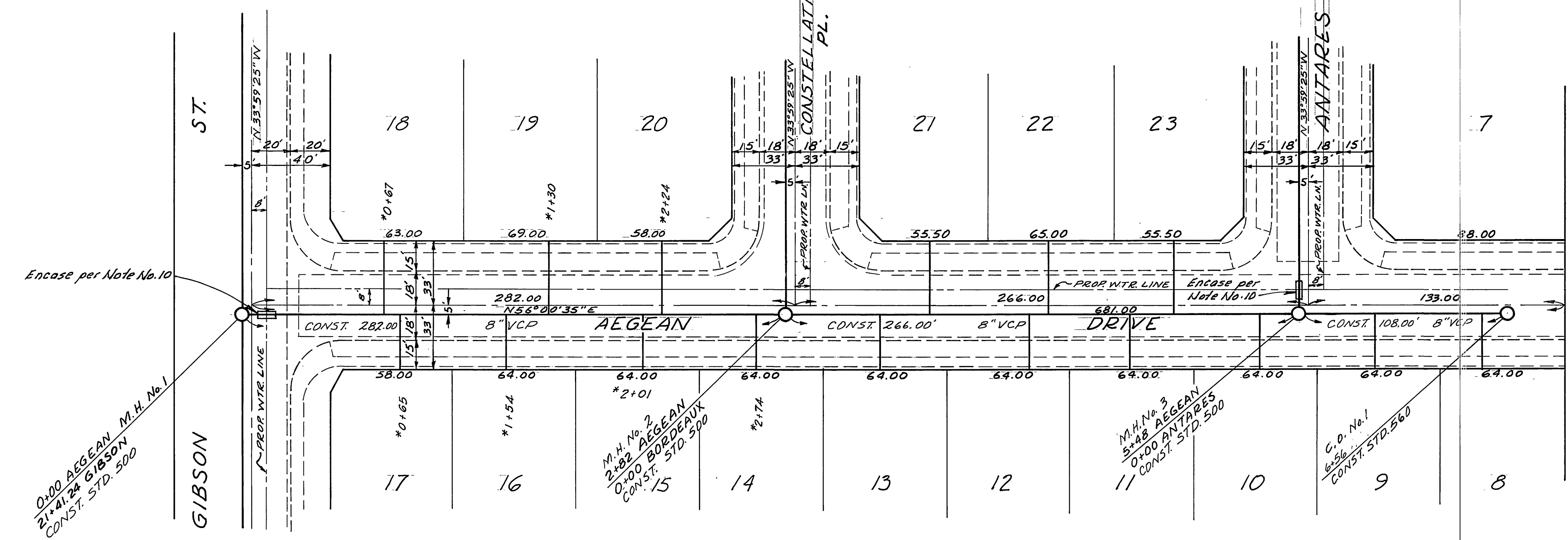
SCALE: HORIZ. 1" = 40' VERT. 1" = 4'

W.O. 76-3 FOR HUNTLEY HOUSING F.B. 1037 DESIGNED BY W.G.B. DRAWN BY W.G.B. CHECKED BY B.O.M.

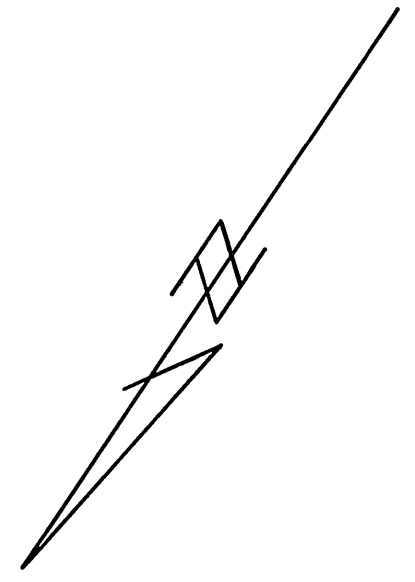


SEE SHEET 2 SEE SHEET 5 SEE SHEET 4

BENCH MARK ELEV. 881.950
 TOP OF BRASS DISK E-4-B (CAPPED) AT THE
 INTERSECTION OF VAN BUREN BLVD. AND
 VICTORIA AVE. 9% F.B. 735/43



NOTE:
 SEE SHEET NO. 1 FOR GENERAL NOTES.

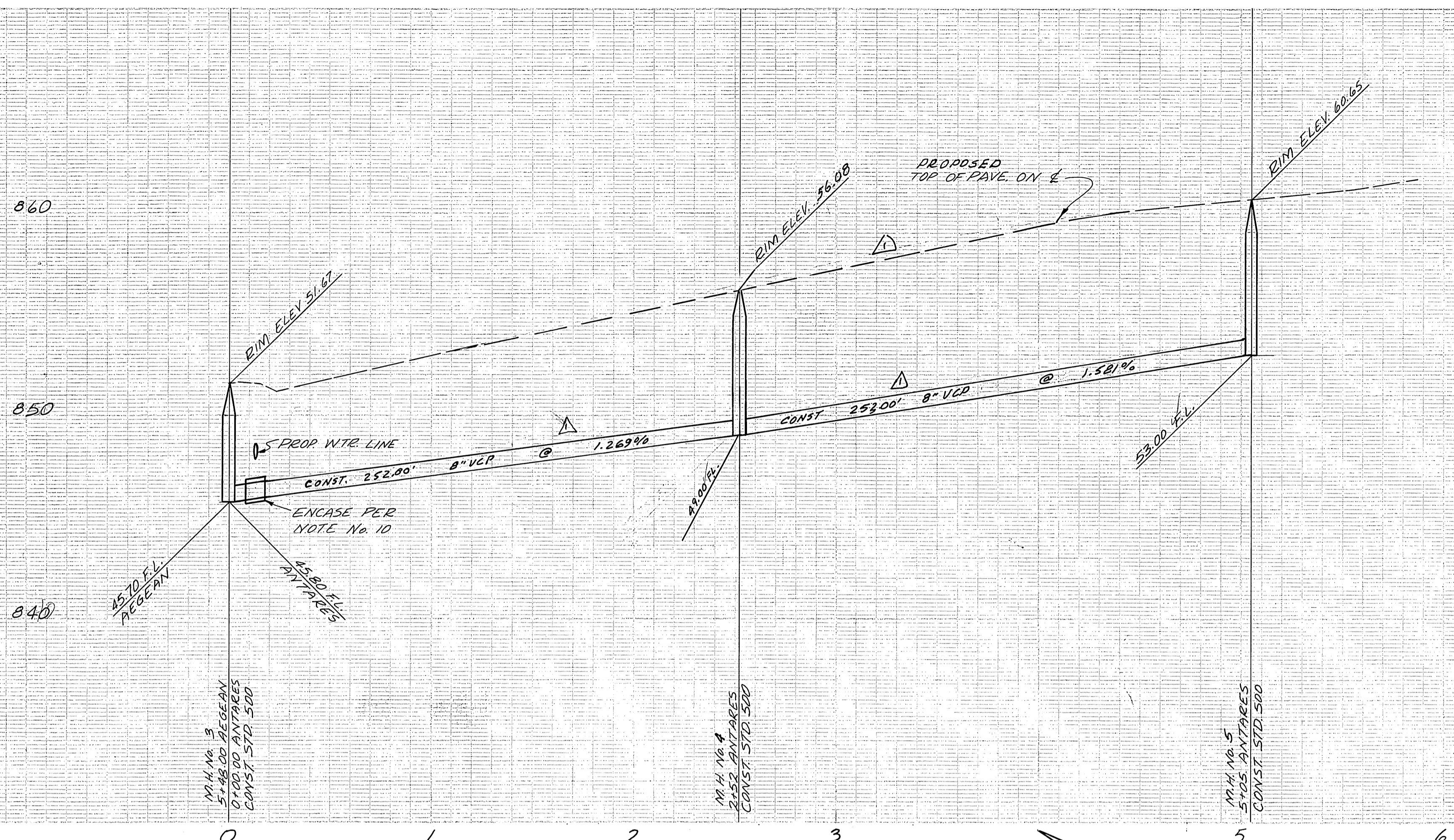


ALBERT A. WEBB ASSOCIATES
 CIVIL ENGINEERS
 RIVERSIDE, CALIFORNIA
 APPROVED BY: *[Signature]* DATE: 2/5/76
 R.E. No. 9876

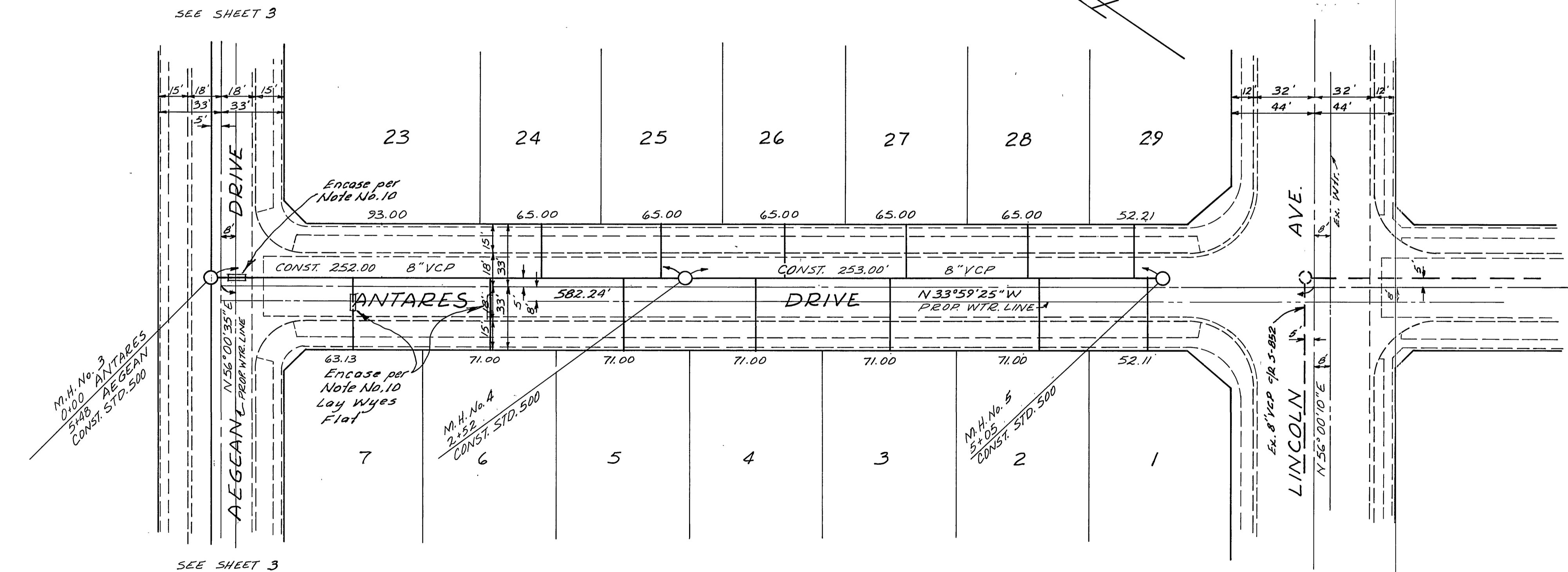
W.O. 76-3 FOR HUNTLEY HOUSING F.B. 1037
 DESIGNED BY: *[Signature]* DRAWN BY: *[Signature]* CHECKED BY: *[Signature]*

Approved by: *[Signature]* DATE: 2-18-76
 Chief Utilities Engineer, Water
CITY OF RIVERSIDE, CALIFORNIA
PUBLIC WORKS DEPARTMENT
 APPROVED BY: *[Signature]* DATE: 2/18/76
 PRINCIPAL ENGINEER
 PARK DEPARTMENT
 TRAFFIC DIVISION
 CHIEF PUB. WKS. ENGR. DATE: 4-21-76

*AS BUILT 3-77 KET
SEWER PLAN & PROFILE
TRACT NO. 7006-1
AEGEAN DRIVE
 ACCOUNT No. S-1028
 DRAWING NUMBER SHEET 3 OF 5
 SCALE: HORIZ. 1" = 40' VERT. 1" = 4'

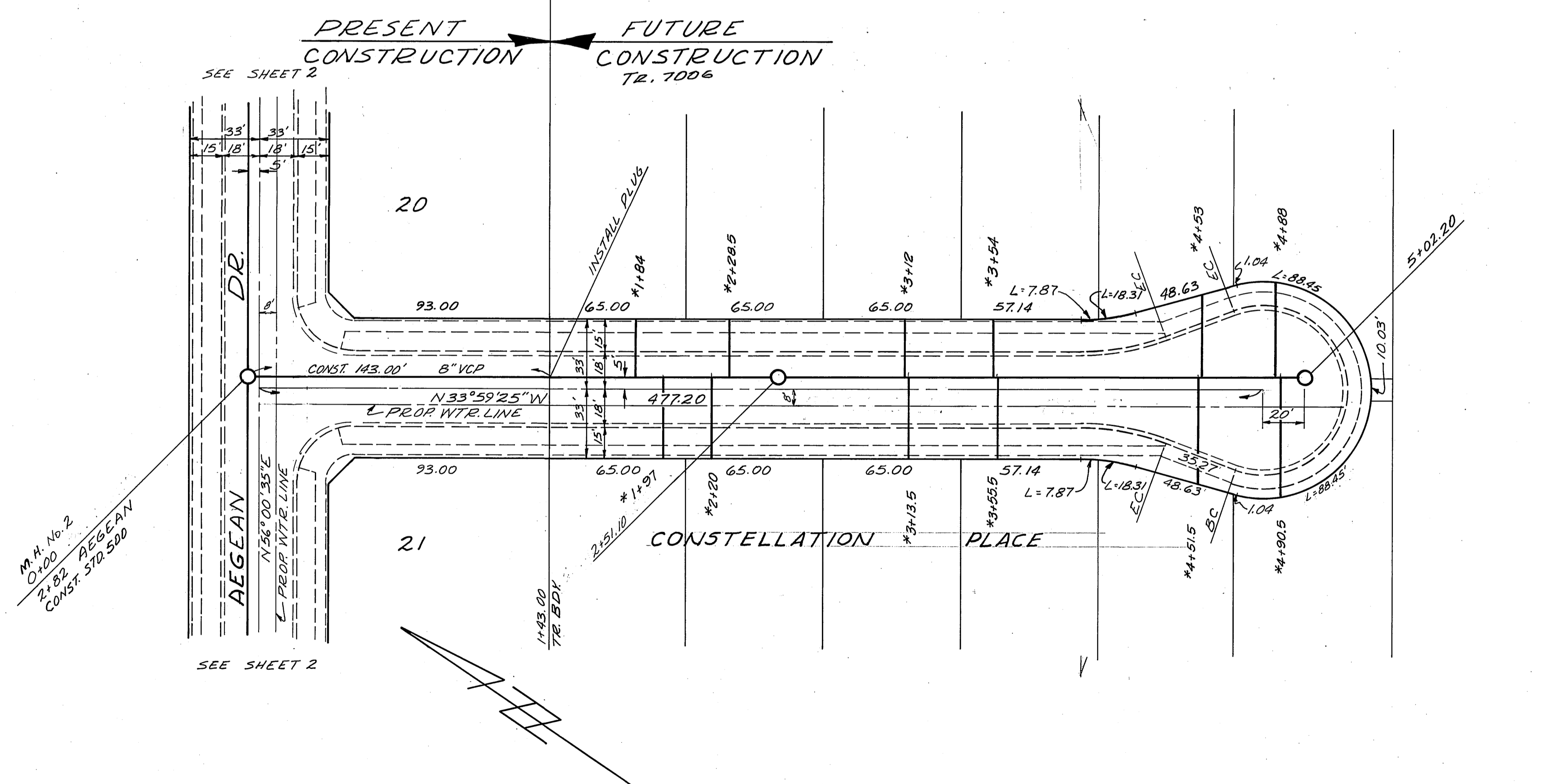
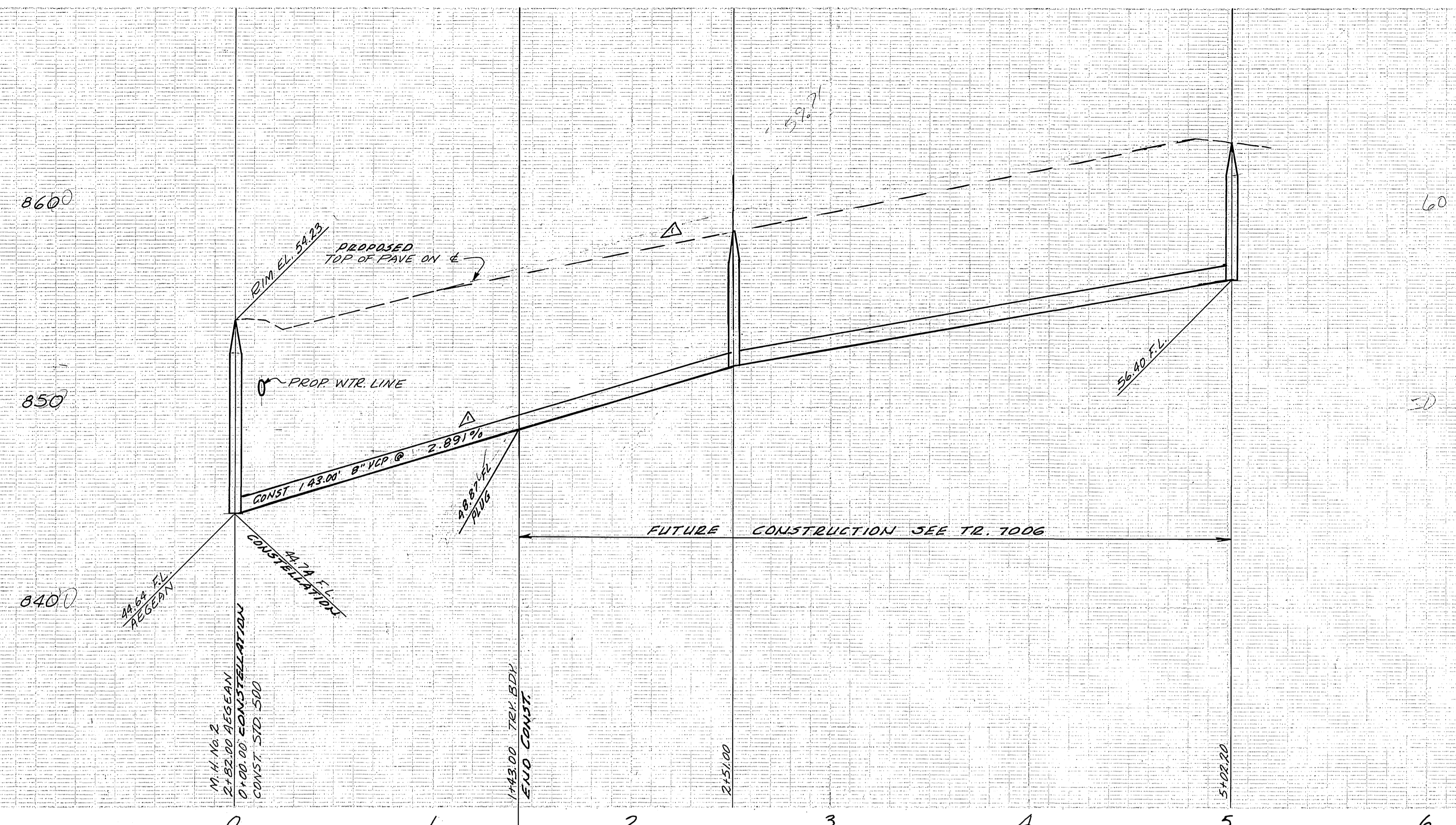


BENCH MARK ELEV. 881.950
 TOP OF BRASS DISK EA-B (CAPPED) AT THE
 INTERSECTION OF VAN BUREN BLVD AND
 VICTORIA AVE. 92 F.B. 735/43



NOTE:
 SEE SHEET NO. 1 FOR GENERAL NOTES.

ALBERT A. WEBB ASSOCIATES CIVIL ENGINEERS RIVERSIDE, CALIFORNIA APPROVED BY: <i>[Signature]</i> DATE: 2/5/76 R.E. No. 2876 W.O. 76-3 FOR HUNTLEY HOUSING F.B. 1037		Approved by: <i>[Signature]</i> 2-18-76 Chief Utilities Engineer, Water. Date		CITY OF RIVERSIDE, CALIFORNIA PUBLIC WORKS DEPARTMENT APPROVED BY: <i>[Signature]</i> DATE: 2/15/76 PARK DEPARTMENT TRAFFIC DIVISION CHIEF PUB. WKS. ENGR. DATE: 4-21-76		SEWER PLAN & PROFILE TRACT NO. 7006-1 ANTARES DRIVE SCALE: HORIZ. 1"=40' VERT. 1"=4' ACCOUNT No. 7 DRAWING NUMBER S-1028 SHEET 4 OF 5 76-3-B	
--	--	--	--	--	--	--	--



BENCH MARK ELEV. 881.950
 TOP OF BRASS DISK E.A.B. (CAPPED) AT
 THE INTERSECTION OF VAN BUREN BLVD.
 AND VICTORIA AVE. 'R F. B. 735/43

NOTE:
 SEE SHEET NO. 1 FOR GENERAL NOTES.

Approved by: *[Signature]* Date: **2-18-76**
 Chief Utilities Engineer, Water

*AS BUILT 6-77 KBT
SEWER PLAN & PROFILE
TRACT NO. 7006-1
CONSTELLATION PLACE
 ACCOUNT No. **S-1028**
 DRAWING NUMBER
 SHEET **5** OF **5**
 SCALE: HORIZ. 1"=40' VERT. 1"=4'

ALBERT A. WEBB ASSOCIATES
 CIVIL ENGINEERS
 RIVERSIDE, CALIFORNIA
 APPROVED BY: *[Signature]* DATE: **2/5/76**
 R.E. No. **9876**
 W.O. 76-3 FOR HUNTLEY HOUSING F.B. 1037
 DESIGNED BY: *[Signature]* DRAWN BY: *[Signature]* CHECKED BY: *[Signature]*

APPROVED BY: *[Signature]* DATE: **2-18-76**
 PRINCIPAL ENGINEER
 PARK DEPARTMENT
 TRAFFIC DIVISION
 CHIEF PUB. WKS. ENGR.
 DATE: **2-18-76**